

UNITED STATES  
DEPARTMENT OF THE INTERIOR  
BUREAU OF LAND MANAGEMENT

**EMNRD- OCD ARTESIA**  
**RECEIVED: 3/23/2020**

FORM APPROVED  
OMB NO. 1004-0137  
Expires: January 31, 2018

**SUNDRY NOTICES AND REPORTS ON WELLS**  
**Do not use this form for proposals to drill or to re-enter an abandoned well. Use form 3160-3 (APD) for such proposals.**

5. Lease Serial No.  
NMNM120895

6. If Indian, Allottee or Tribe Name

7. If Unit or CA/Agreement, Name and/or No.

**SUBMIT IN TRIPLICATE - Other instructions on page 2**

1. Type of Well  
 Oil Well  Gas Well  Other

2. Name of Operator  
XTO ENERGY INCORPORATED  
Contact: KELLY KARDOS  
E-Mail: kelly\_kardos@xtoenergy.com

3a. Address  
6401 HOLIDAY HILL ROAD BLDG 5  
MIDLAND, TX 79707

3b. Phone No. (include area code)  
Ph: 432-620-4374

8. Well Name and No.  
CHAIN-BLUE LIGHTNING 26 FED 108H

9. API Well No.  
30-015-46644-00-X1

10. Field and Pool or Exploratory Area  
PURPLE SAGE-WOLFCAMP (GAS)

4. Location of Well (Footage, Sec., T., R., M., or Survey Description)  
Sec 23 T25S R29E SESE 331FSL 273FEL  
32.109062 N Lat, 103.947456 W Lon

11. County or Parish, State  
EDDY COUNTY, NM

**12. CHECK THE APPROPRIATE BOX(ES) TO INDICATE NATURE OF NOTICE, REPORT, OR OTHER DATA**

TYPE OF SUBMISSION	TYPE OF ACTION			
<input checked="" type="checkbox"/> Notice of Intent	<input type="checkbox"/> Acidize	<input type="checkbox"/> Deepen	<input type="checkbox"/> Production (Start/Resume)	<input type="checkbox"/> Water Shut-Off
<input type="checkbox"/> Subsequent Report	<input type="checkbox"/> Alter Casing	<input type="checkbox"/> Hydraulic Fracturing	<input type="checkbox"/> Reclamation	<input type="checkbox"/> Well Integrity
<input type="checkbox"/> Final Abandonment Notice	<input type="checkbox"/> Casing Repair	<input type="checkbox"/> New Construction	<input type="checkbox"/> Recomplete	<input checked="" type="checkbox"/> Other Change to Original APD
	<input type="checkbox"/> Change Plans	<input type="checkbox"/> Plug and Abandon	<input type="checkbox"/> Temporarily Abandon	
	<input type="checkbox"/> Convert to Injection	<input type="checkbox"/> Plug Back	<input type="checkbox"/> Water Disposal	

13. Describe Proposed or Completed Operation: Clearly state all pertinent details, including estimated starting date of any proposed work and approximate duration thereof. If the proposal is to deepen directionally or recomplete horizontally, give subsurface locations and measured and true vertical depths of all pertinent markers and zones. Attach the Bond under which the work will be performed or provide the Bond No. on file with BLM/BIA. Required subsequent reports must be filed within 30 days following completion of the involved operations. If the operation results in a multiple completion or recompletion in a new interval, a Form 3160-4 must be filed once testing has been completed. Final Abandonment Notices must be filed only after all requirements, including reclamation, have been completed and the operator has determined that the site is ready for final inspection.

XTO Energy Inc. requests permission to change the casing & cement design per the attached drilling program.

XTO requests to not utilize centralizers in the curve and lateral.

XTO requests a variance to be able to batch drill this well if necessary. In doing so, XTO will set each casing string and ensure that the well is cemented properly and the well is static. With floats holding, no pressure on the csg annulus, and the installation of a 10K TA cap as per GE recommendations, XTO will contact the BLM to skid the rig to drill the remaining wells on the pad. Once surface and intermediate strings are all completed, XTO will begin drilling the production hole on each of the wells.

14. I hereby certify that the foregoing is true and correct.

**Electronic Submission #502103 verified by the BLM Well Information System  
For XTO ENERGY INCORPORATED, sent to the Carlsbad  
Committed to AFMSS for processing by PRISCILLA PEREZ on 02/06/2020 (20PP1111SE)**

Name (Printed/Typed) KELLY KARDOS Title REGULATORY COORDINATOR

Signature (Electronic Submission) Date 02/05/2020

**THIS SPACE FOR FEDERAL OR STATE OFFICE USE**

Approved By ALLISON MORENCY Title PETROLEUM ENGINEER Date 02/20/2020

Conditions of approval, if any, are attached. Approval of this notice does not warrant or certify that the applicant holds legal or equitable title to those rights in the subject lease which would entitle the applicant to conduct operations thereon.

Office Carlsbad

Title 18 U.S.C. Section 1001 and Title 43 U.S.C. Section 1212, make it a crime for any person knowingly and willfully to make to any department or agency of the United States any false, fictitious or fraudulent statements or representations as to any matter within its jurisdiction.

(Instructions on page 2)

**\*\* BLM REVISED \*\* BLM REVISED \*\* BLM REVISED \*\* BLM REVISED \*\* BLM REVISED \*\***

**Additional data for EC transaction #502103 that would not fit on the form**

**32. Additional remarks, continued**

Chain-Blue Lightning 26 Fed 168H 30-015-46647

Chain-Blue Lightning 26 Fed 108H 30-015-46644

Chain-Blue Lightning 26 Fed 708H BLM APD Approved. WO API Number.

## Revisions to Operator-Submitted EC Data for Sundry Notice #502103

	<b>Operator Submitted</b>	<b>BLM Revised (AFMSS)</b>
Sundry Type:	APDCH NOI	APDCH NOI
Lease:	NMNM120895	NMNM120895
Agreement:		
Operator:	XTO ENERGY INC. 6401 HOLIDAY HILL RD BLDG 5 MIDLAND, TX 79707 Ph: 432-620-4374	XTO ENERGY INCORPORATED 6401 HOLIDAY HILL ROAD BLDG 5 MIDLAND, TX 79707 Ph: 432.683 2277
Admin Contact:	KELLY KARDOS REGULATORY COORDINATOR E-Mail: kelly_kardos@xtoenergy.com  Ph: 432-620-4374	KELLY KARDOS REGULATORY COORDINATOR E-Mail: kelly_kardos@xtoenergy.com  Ph: 432-620-4374
Tech Contact:	KELLY KARDOS REGULATORY COORDINATOR E-Mail: kelly_kardos@xtoenergy.com  Ph: 432-620-4374	KELLY KARDOS REGULATORY COORDINATOR E-Mail: kelly_kardos@xtoenergy.com  Ph: 432-620-4374
Location:		
State:	NM	NM
County:	EDDY	EDDY
Field/Pool:	PURPLE SAGE; WOLFCAMP	PURPLE SAGE-WOLFCAMP (GAS)
Well/Facility:	CHAIN-BLUE LIGHTNING 26 FED 108H Sec 23 T25S R29E Mer NMP SESE 331FSL 273FEL	CHAIN-BLUE LIGHTNING 26 FED 108H Sec 23 T25S R29E SESE 331FSL 273FEL 32.109062 N Lat, 103.947456 W Lon

DRILLING PLAN: BLM COMPLIANCE  
(Supplement to BLM 3160-3)

XTO Energy Inc.  
Chain-Blue Lightning 26 Fed 108H  
Projected TD: 15699' MD / 10399' TVD  
SHL: 331' FSL & 273' FEL , Section 23, T25S, R29E  
BHL: 200' FSL & 330' FEL , Section 26, T25S, R29E  
Eddy County, NM

**1. Geologic Name of Surface Formation**

A. Permian

**2. Estimated Tops of Geological Markers & Depths of Anticipated Fresh Water, Oil or Gas:**

Formation	Well Depth (TVD)	Water/Oil/Gas
Rustler	619'	Water
Top of Salt	799'	Water
Base of Salt	3050'	Water
Delaware	3275'	Water
Bone Spring	7070'	Water/Oil/Gas
1st Bone Spring Ss	8013'	Water/Oil/Gas
2nd Bone Spring Ss	8875'	Water/Oil/Gas
3rd Bone Spring Ss	9941'	Water/Oil/Gas
Wolfcamp	10287'	Water/Oil/Gas
Target/Land Curve	10399'	Water/Oil/Gas

\*\*\* Hydrocarbons @ Brushy Canyon

\*\*\* Groundwater depth 40' (per NM State Engineers Office).

No other formations are expected to yield oil, gas or fresh water in measurable volumes. The surface fresh water sands will be protected by setting 16 inch casing @ ' (799' above the salt) and circulating cement back to surface. The salt will be isolated by setting 11-3/4 inch casing at 690' and circulating cement to surface. A 10-5/8 inch vertical hole will be drilled to 9599' and 8-5/8 inch casing ran and cemented 500' into the 11-3/4 inch casing. An 7-7/8 inch curve and lateral hole will be drilled to MD/TD and 5-1/2 casing will be set at TD and cemented back 300' into the 8-5/8 inch casing shoe.

**3. Casing Design**

Hole Size	Depth	OD Csg	Weight	Collar	Grade	New/Used	SF Burst	SF Collapse	SF Tension
14-3/4"	0' – 690'	11-3/4"	47	BTC	J-55	New	1.29	4.21	14.71
10-5/8"	0' – 9599'	8-5/8"	32	BTC	HCL-80	New	1.49	1.58	2.38
7-7/8"	0' – 15699'	5-1/2"	20	BTC	P-110	New	1.18	1.87	2.68

- XTO requests to not utilize centralizers in the curve and lateral

8-5/8" Collapse analyzed using 50% evacuation based on regional experience.

5-1/2" tension calculated using vertical hanging weight plus the lateral weight multiplied by a friction factor of 0.35

- Test on Casing will be limited to 70% burst of the casing or 1500 psi, whichever is less

**WELLHEAD:**

Permanent Wellhead – GE RSH Multibowl System

A. Starting Head (RSH System): 11-3/4" SOW bottom x 13-5/8" 5M top flange

B. Tubing Head: 13-5/8" 5M bottom flange x 7-1/16" 10M top flange

- Wellhead will be installed by manufacturer's representatives.
- Manufacturer will monitor welding process to ensure appropriate temperature of seal.
- Operator will test the 8-5/8" casing per Onshore Order 2.
- Wellhead manufacturer representative may not be present for BOP test plug installation

#### 4. Cement Program

##### **Surface Casing: 11-3/4", 47 New J-55, BTC casing to be set at +/- 690'**

Lead: 170 sxs Halcem-C + 2% CaCl (mixed at 12.8 ppg, 1.88 ft3/sx, 9.61 gal/sx water)

Tail: 190 sxs Halcem-C + 2% CaCl (mixed at 14.8 ppg, 1.35 ft3/sx, 6.39 gal/sx water)

Compressives:           12-hr =           900 psi           24 hr = 1500 psi

Top of Cement: Surface

##### **Intermediate Casing: 8-5/8", 32 New HCL-80, BTC casing to be set at +/- 9599'**

*ECP/DV Tool to be set at 4101'*

###### *1st Stage*

Lead: 630 sxs Halcem-C + 2% CaCl (mixed at 12.8 ppg, 1.87 ft3/sx, 9.61 gal/sx water)

Tail: 250 sxs Halcem-C + 2% CaCl (mixed at 14.8 ppg, 1.35 ft3/sx, 6.39 gal/sx water)

Compressives:           12-hr =           900 psi           24 hr = 1500 psi

###### *2nd Stage*

Lead: 990 sxs Halcem-C + 2% CaCl (mixed at 12.8 ppg, 1.88 ft3/sx, 9.61 gal/sx water)

Tail: 310 sxs Halcem-C + 2% CaCl (mixed at 14.8 ppg, 1.33 ft3/sx, 6.39 gal/sx water)

Compressives:           12-hr =           900 psi           24 hr = 1500 psi

Top of Cement: 200' inside previous casing shoe

##### **Production Casing: 5-1/2", 20 New P-110, BTC casing to be set at +/- 15699'**

Lead: 1000 sxs Halcem-C + 2% CaCl (mixed at 11.5 ppg, 1.88 ft3/sx, 9.61 gal/sx water)

Tail: 1000 sxs VersaCem (mixed at 13.2 ppg, 9299 ft3/sx, 8.38 gal/sx water)

Compressives:           12-hr =           1375 psi           24 hr = 2285 psi

Top of Cement: 300' inside previous casing shoe

#### 5. Pressure Control Equipment

Once the permanent WH is installed on the 13-3/8 casing, the blow out preventer equipment (BOP) will consist of a 13-5/8" minimum 5M Hydril and a 13-5/8" minimum 5M 3-Ram BOP. MASP should not exceed 3660 psi. In any instance where 10M BOP is required by BLM, XTO requests a variance to utilize 5M annular with 10M ram preventers (a common BOP configuration, which allows use of 10M rams in unlikely event that pressures exceed 5M). Also a variance is requested to test the 5M annular to 70% of working pressure at 3500 psi.

All BOP testing will be done by an independent service company. Annular pressure tests will be limited to 50% of the working pressure. When nipping up on the 13-5/8" 5M bradenhead and flange, the BOP test will be limited to 5000 psi. When the 11-3/4" and 8-5/8" casing is set, the packoff seals will be tested to a minimum of 5000 psi. All BOP tests will include a low pressure test as per BLM regulations. The 5M BOP diagrams are attached. Blind rams will be functioned tested each trip, pipe rams will be functioned tested each day.

A variance is requested to allow use of a flex hose as the choke line from the BOP to the Choke Manifold. If this hose is used, a copy of the manufacturer's certification and pressure test chart will be kept on the rig. Attached is an example of a certification and pressure test chart. The manufacturer does not require anchors.

XTO requests a variance to be able to batch drill this well if necessary. In doing so, XTO will set each casing string and ensure that the well is cemented properly and the well is static. With floats holding, no pressure on the csg annulus, and the installation of a 10K TA cap as per GE recommendations, XTO will contact the BLM to skid the rig to drill the remaining wells on the pad. Once surface and intermediate strings are all completed, XTO will begin drilling the production hole on each of the wells.

## 6. Proposed Mud Circulation System

INTERVAL	Hole Size	Mud Type	MW (ppg)	Viscosity (sec/qt)	Fluid Loss (cc)
0' to 690'	14-3/4"	FW / Native	8.4-8.8	30-40	NC
690' to 9599'	10-5/8"	BW/FWM/Direct Emulsion	8.7-9.8	29-32	NC - 20
9599' to 15699'	7-7/8"	FW / Cut Brine / Polymer / OBM	10.5-11.5	32-50	NC - 20

The necessary mud products for weight addition and fluid loss control will be on location at all times.

Spud with fresh water/native mud and set 11 3/4" surface casing, isolating the fresh water aquifer. Drill out from under 11-3/4" surface casing with a brine/oil direct emulsion water-based mud. Use fibrous materials as needed to control seepage and lost circulation. Pump viscous sweeps as needed for hole cleaning. Pump speed will be recorded on a daily drilling report after mudding up. A Pason or Totco will be used to detect changes in loss or gain of mud volume. A mud test will be performed every 24 hours to determine: density, viscosity, strength, filtration and pH as necessary. Use available solids controls equipment to help keep mud weight down after mud up. Rig up solids control equipment to operate as a closed loop system.

## 7. Auxiliary Well Control and Monitoring Equipment

- A. A Kelly cock will be in the drill string at all times.
- B. A full opening drill pipe stabbing valve having appropriate connections will be on the rig floor at all times.
- C. H2S monitors will be on location when drilling below the 11-3/4" casing.

## 8. Logging, Coring and Testing Program

Mud Logger: Mud Logging Unit (2 man) below 1st intermediate casing.

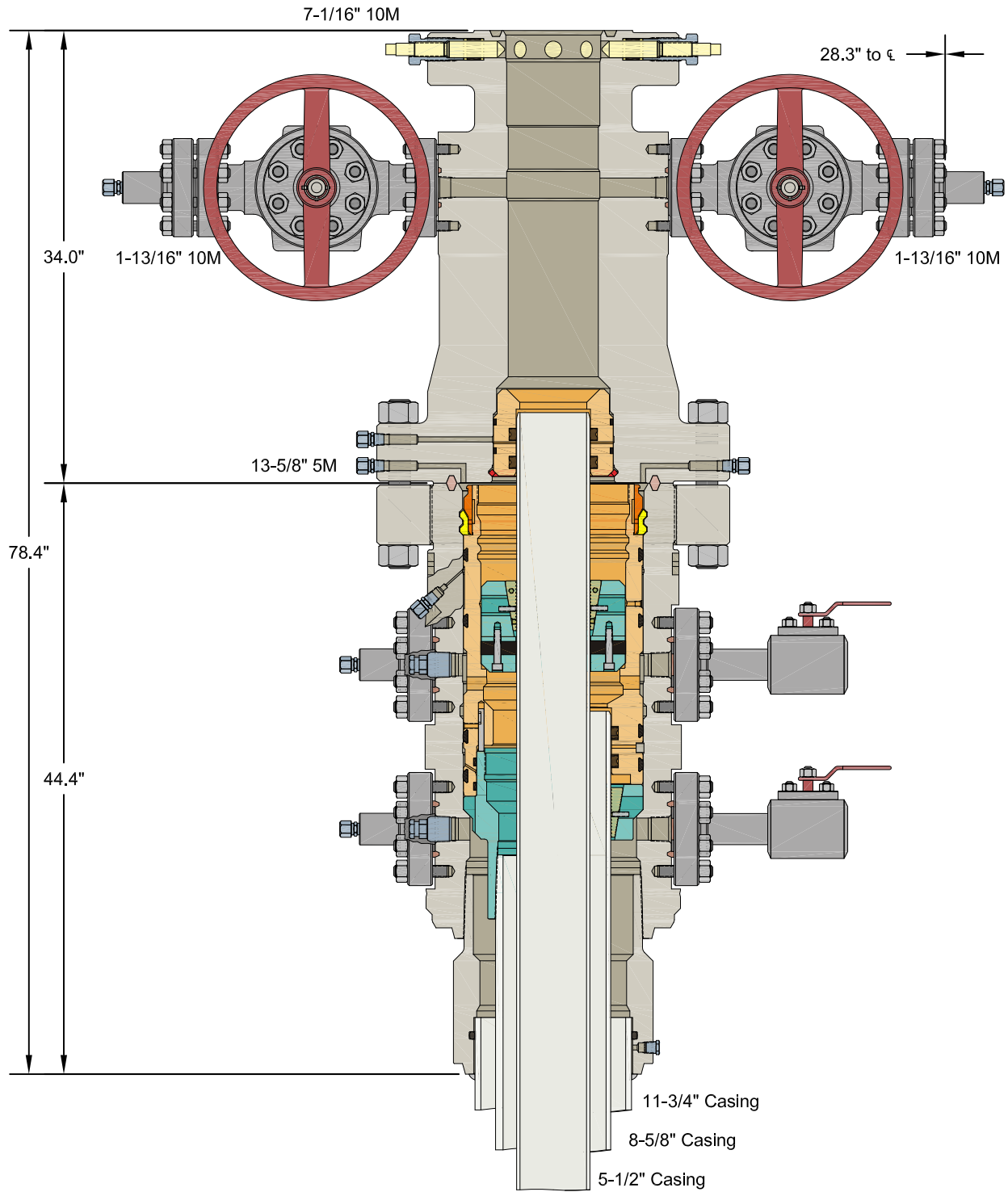
Open hole logging will not be done on this well.

## 9. Abnormal Pressures and Temperatures / Potential Hazards

None Anticipated. BHT of 145 to 165 F is anticipated. No H2S is expected but monitors will be in place to detect any H2S occurrences. Should these circumstances be encountered the operator and drilling contractor are prepared to take all necessary steps to ensure safety of all personnel and environment. Lost circulation could occur but is not expected to be a serious problem in this area and hole seepage will be compensated for by additions of small amounts of LCM in the drilling fluid. The maximum anticipated bottom hole pressure for this well is 5948 psi.

## 10. Anticipated Starting Date and Duration of Operations

Road and location construction will begin after Santa Fe and BLM have approved the APD. Anticipated spud date will be as soon after Santa Fe and BLM approval and as soon as a rig will be available. Move in operations and drilling is expected to take 40 days. If production casing is run, an additional 30 days will be needed to complete well and construct surface facilities and/or lay flow lines in order to place well on production.



ALL DIMENSIONS ARE APPROXIMATE

This drawing is the property of GE Oil & Gas Pressure Control LP and is considered confidential. Unless otherwise approved in writing, neither it nor its contents may be used, copied, transmitted or reproduced except for the sole purpose of GE Oil & Gas Pressure Control LP.

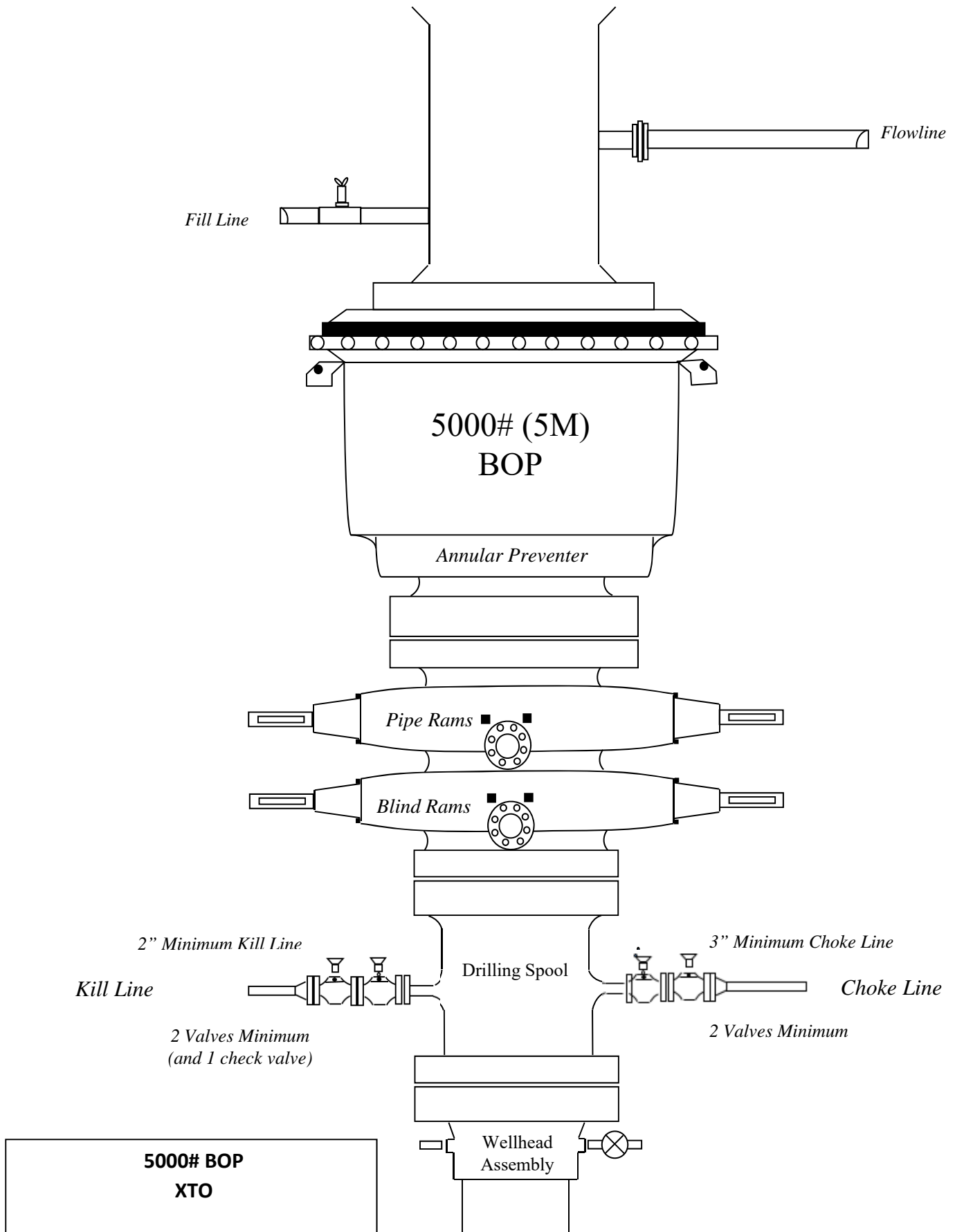
XTO ENERGY, INC.

11-3/4" x 8-5/8" x 5-1/2" 10M RSH-2 Wellhead Assembly, With T-EBS-F Tubing Head

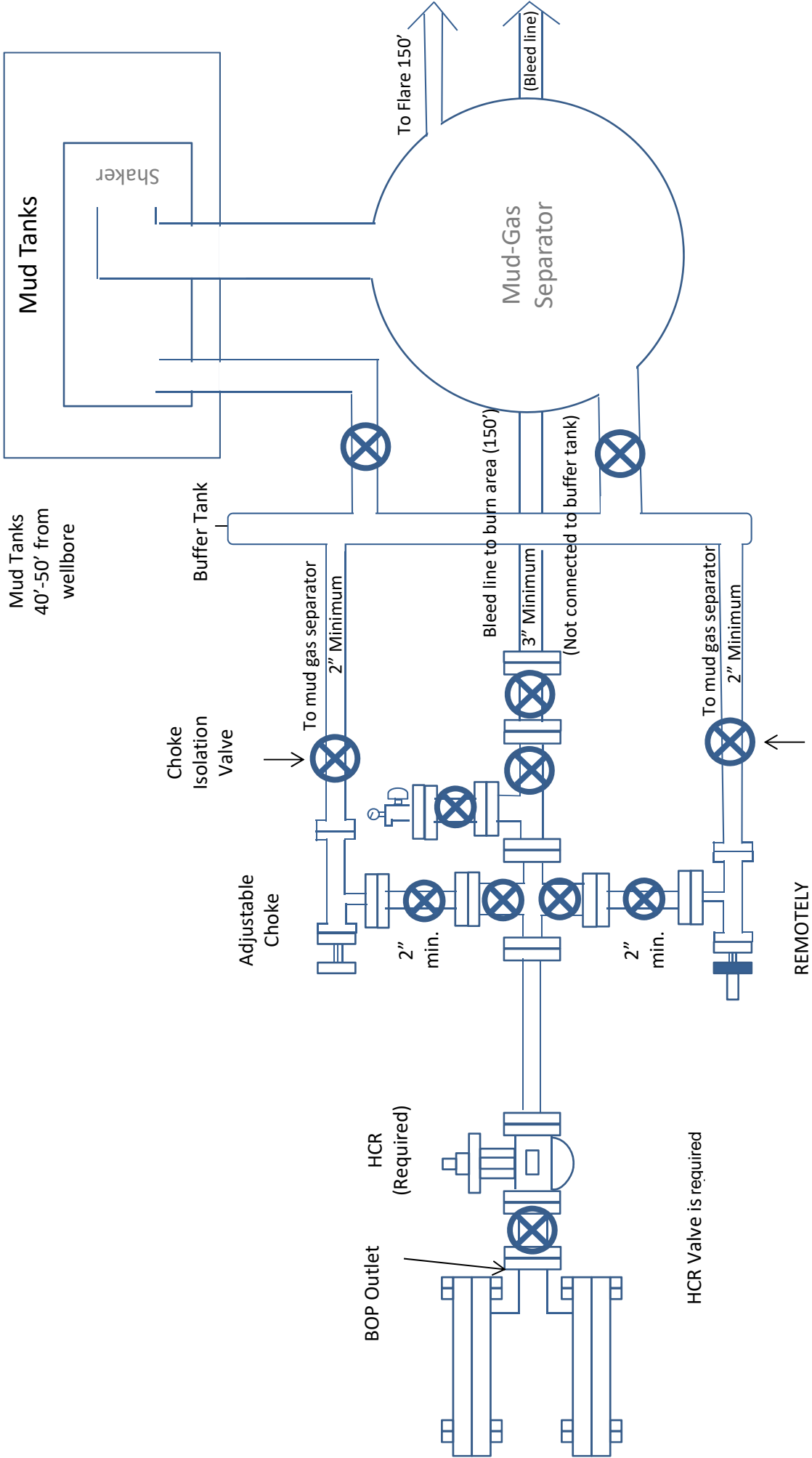
DRAWN VJK 31OCT16

APPRV KN 31OCT16

FOR REFERENCE ONLY  
DRAWING NO. 10012358

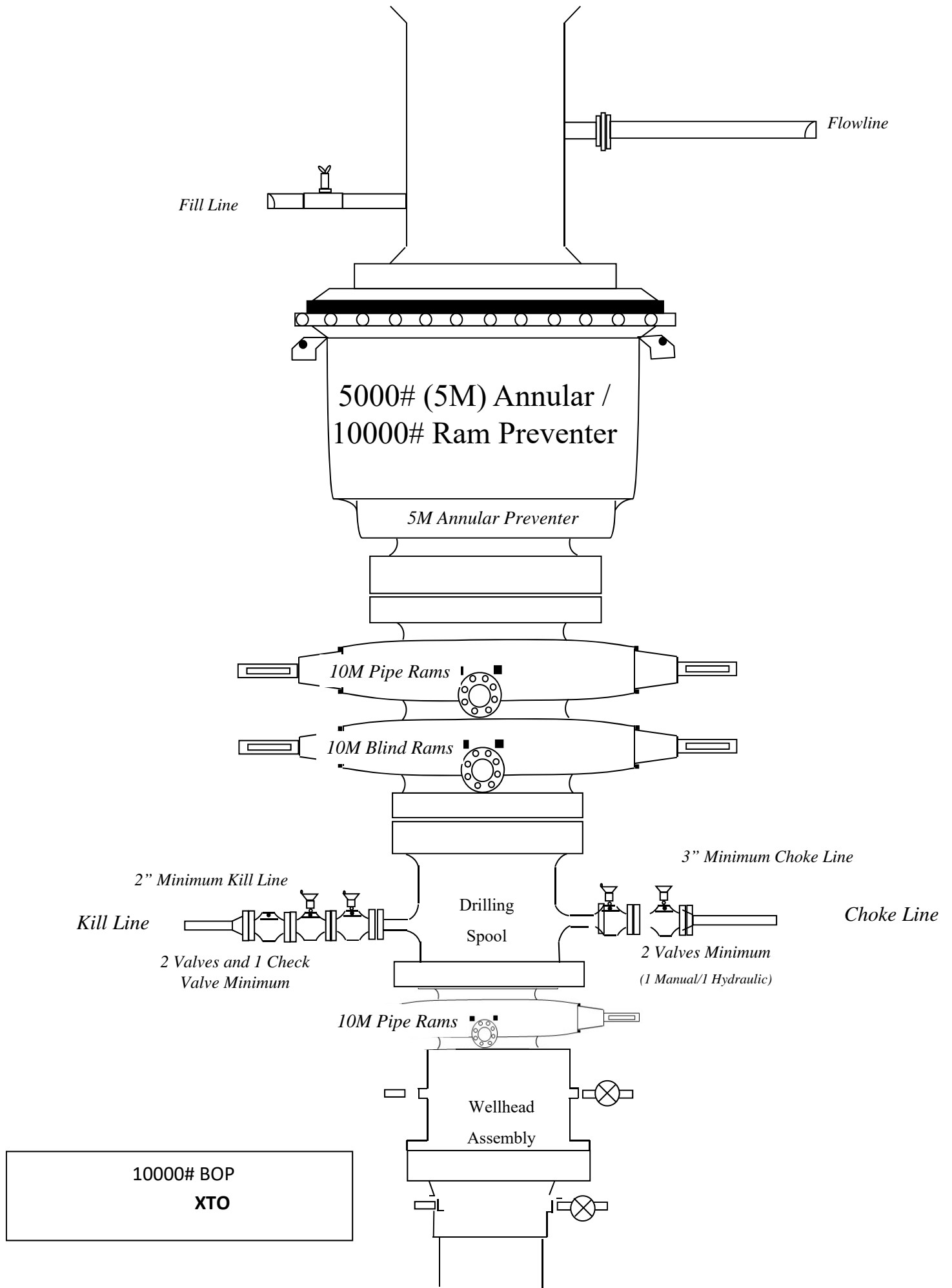


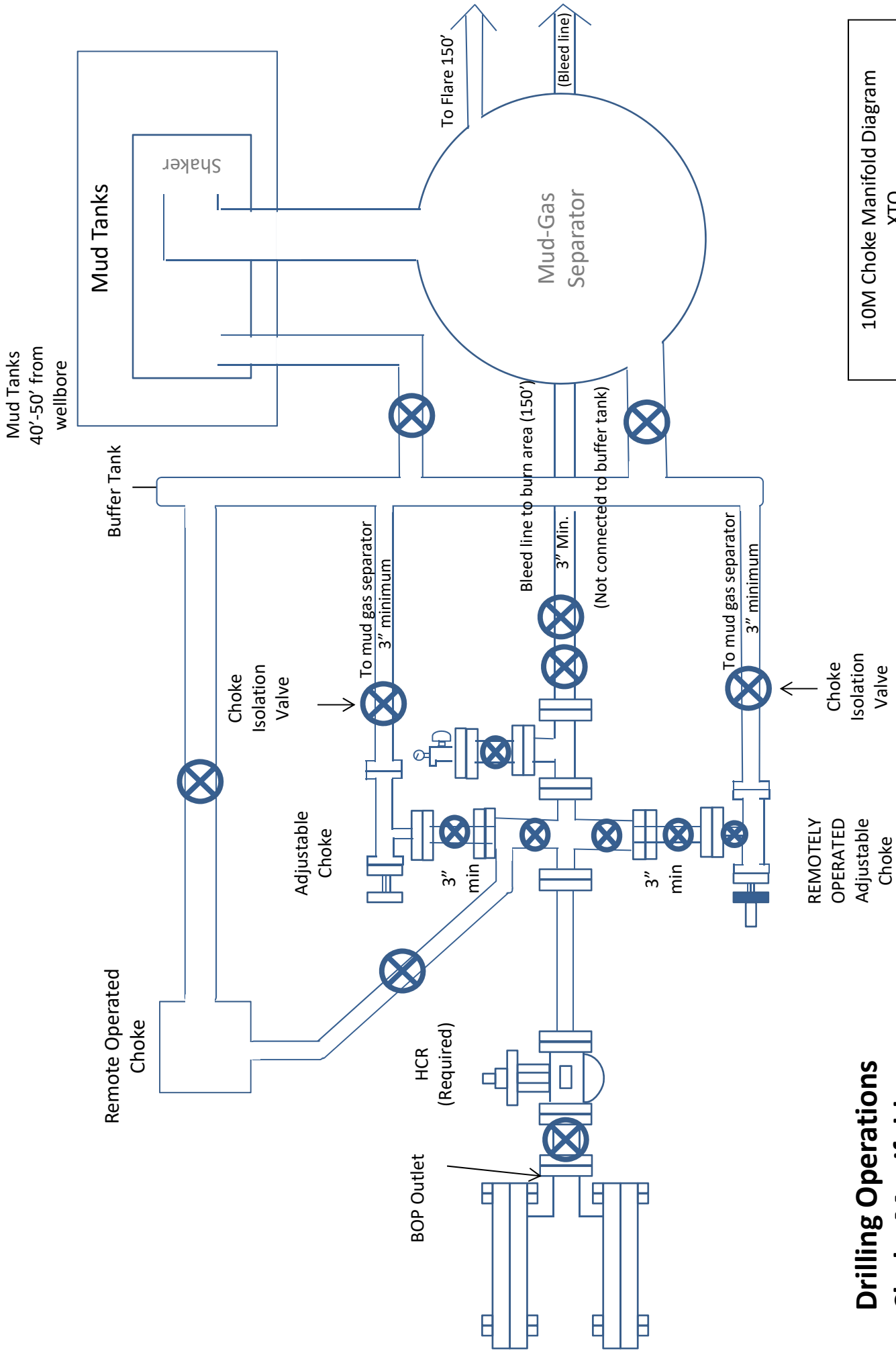




5M Choke Manifold Diagram  
XTO

**Drilling Operations  
Choke Manifold  
5M Service**





10M Choke Manifold Diagram XTO

**Drilling Operations  
Choke Manifold  
10M Service**

## 10,000 PSI Annular BOP Variance Request

XTO Energy/XTO Permian Op. request a variance to use a 5000 psi annular BOP with a 10,000 psi BOP stack. The component and compatibility tables along with the general well control plans demonstrate how the 5000 psi annular BOP will be protected from pressures that exceed its rated working pressure (RWP). The pressure at which the control of the wellbore is transferred from the annular preventer to another available preventer will not exceed 3500 psi (70% of the RWP of the 5000 psi annular BOPL).

### 1. Component and Preventer Compatibility Tables

The tables below outline the tubulars and the compatible preventers in use. This table, combined with the drilling fluid, documents that two barriers to flow will be maintained at all times.

<b>8-1/2" Production Hole Section 10M psi Requirement</b>					
<b>Component</b>	<b>OD</b>	<b>Primary Preventer</b>	<b>RWP</b>	<b>Alternate Preventer(s)</b>	<b>RWP</b>
Drillpipe	5.000" or 4.500"	Annular	5M	Upper 3.5"-5.5" VBR Lower 3.5"-5.5" VBR	10M 10M
HWDP	5.000" or 4.500"	Annular	5M	Upper 3.5"-5.5" VBR Lower 3.5"-5.5" VBR	10M 10M
Jars	6.500"	Annular	5M	-	-
DCs and MWD tools	6.500"-8.000"	Annular	5M	-	-
Mud Motor	6.750"-8.000"	Annular	5M	-	-
Production Casing	5-1/2"	Annular	5M	-	-
Open-Hole	-	Blind Rams	10M	-	-

## 2. Well Control Procedures

Below are the minimal high-level tasks prescribed to assure a proper shut-in while drilling, tripping, running casing, pipe out of the hole (open hole), and moving the BHA through the BOPs. At least one well control drill will be performed weekly per crew to demonstrate compliance with the procedure and well control plan. The well control drill will be recorded in the daily drilling log. The type of drill will be determined by the ongoing operations, but reasonable attempts will be made to vary the type of drill conducted (pit, trip, open hole, choke, etc.). This well control plan will be available for review by rig personnel in the XTO Energy/Permian Operating drilling supervisor's office on location and on the rig floor. All BOP equipment will be tested as per Onshore O&G Order No. 2 with the exception of the 5000 psi annular which will be tested to 70% of its RWP.

### General Procedure While Drilling

1. Sound alarm (alert crew)
2. Space out drill string
3. Shut down pumps (stop pumps and rotary)
4. Shut-in well (uppermost applicable BOP, typically annular preventer, first. HCR & choke will already be in the closed position.)
5. Confirm shut-in
6. Notify toolpusher/company representative
7. Read and record the following:
  - a. SIDPP & SICP
  - b. Pit gain
  - c. Time
8. Regroup and identify forward plan

9. If pressure has built or is anticipated during the kill to reach 70% or greater of the RWP of the annular preventer, confirm spacing and close the upper variable bore rams.

#### General Procedure While Tripping

1. Sound alarm (alert crew)
2. Stab full-opening safety valve & close
3. Space out drill string
4. Shut-in well (uppermost applicable BOP, typically annular preventer, first. HCR & choke will already be in the closed position.)
5. Confirm shut-in
6. Notify toolpusher/company representative
7. Read and record the following:
  - a. SIDPP & SICP
  - b. Pit gain
  - c. Time
8. Regroup and identify forward plan
9. If pressure has built or is anticipated during the kill to reach 70% of the RWP of the annular preventer, confirm spacing and close the upper variable bore rams.

#### General Procedure While Running Production Casing

1. Sound alarm (alert crew)
2. Stab crossover and full-opening safety valve and close
3. Space out string
4. Shut-in well (uppermost applicable BOP, typically annular preventer, first. HCR & choke will already be in the closed position.)
5. Confirm shut-in
6. Notify toolpusher/company representative
7. Read and record the following:
  - a. SIDPP & SICP
  - b. Pit gain
  - c. Time
8. Regroup and identify forward plan
9. If pressure has built or is anticipated during the kill to reach 70% or greater of the RWP of the annular preventer, confirm spacing and close the upper variable bore rams.

### General Procedure With No Pipe In Hole (Open Hole)

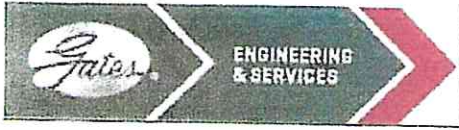
1. Sound alarm (alert crew)
2. Shut-in with blind rams (HCR & choke will already be in the closed position)
3. Confirm shut-in
4. Notify toolpusher/company representative
5. Read and record the following:
  - a. SICP
  - b. Pit gain
  - c. Time
6. Regroup and identify forward plan

### General Procedures While Pulling BHA Through Stack

1. PRIOR to pulling last joint of drillpipe through stack:
  - a. Perform flow check. If flowing, continue to (b).
  - b. Sound alarm (alert crew)
  - c. Stab full-opening safety valve and close
  - d. Space out drill string with tool joint just beneath the upper variable bore rams
  - e. Shut-in using upper variable bore rams (HCR & choke will already be in the closed position)
  - f. Confirm shut-in
  - g. Notify toolpusher/company representative
  - h. Read and record the following:
    - i. SIDPP & SICP
    - ii. Pit gain
    - iii. Time
  - i. Regroup and identify forward plan
2. With BHA in the stack and compatible ram preventer and pipe combination immediately available:
  - a. Sound alarm (alert crew)
  - b. Stab crossover and full-opening safety valve and close
  - c. Space out drill string with upset just beneath the upper variable bore rams
  - d. Shut-in using upper variable bore rams (HCR & choke will already be in the closed position)
  - e. Confirm shut-in
  - f. Notify toolpusher/company representative
  - g. Read and record the following:
    - i. SIDPP & SICP

- ii. Pit gain
    - iii. Time
  - h. Regroup and identify forward plan
- 3. With BHA in the stack and NO compatible ram preventer and pipe combination immediately available:
  - a. Sound alarm (alert crew)
  - b. If possible, pull string clear of the stack and follow "Open Hole" procedure.
  - c. If impossible to pull string clear of the stack:
  - d. Stab crossover, make up one joint/stand of drillpipe and full-opening safety valve and close
  - e. Space out drill string with tooljoint just beneath the upper variable bore ram
  - f. Shut-in using upper variable bore ram (HCR & choke will already be in the closed position)
  - g. Confirm shut-in
  - h. Notify toolpusher/company representative
  - i. Read and record the following:
    - i. SIDPP & SICP
    - ii. Pit gain
    - iii. Time
  - j. Regroup and identify forward plan





GATES E & S NORTH AMERICA, INC  
 DU-TEX  
 134 44TH STREET  
 CORPUS CHRISTI, TEXAS 78405

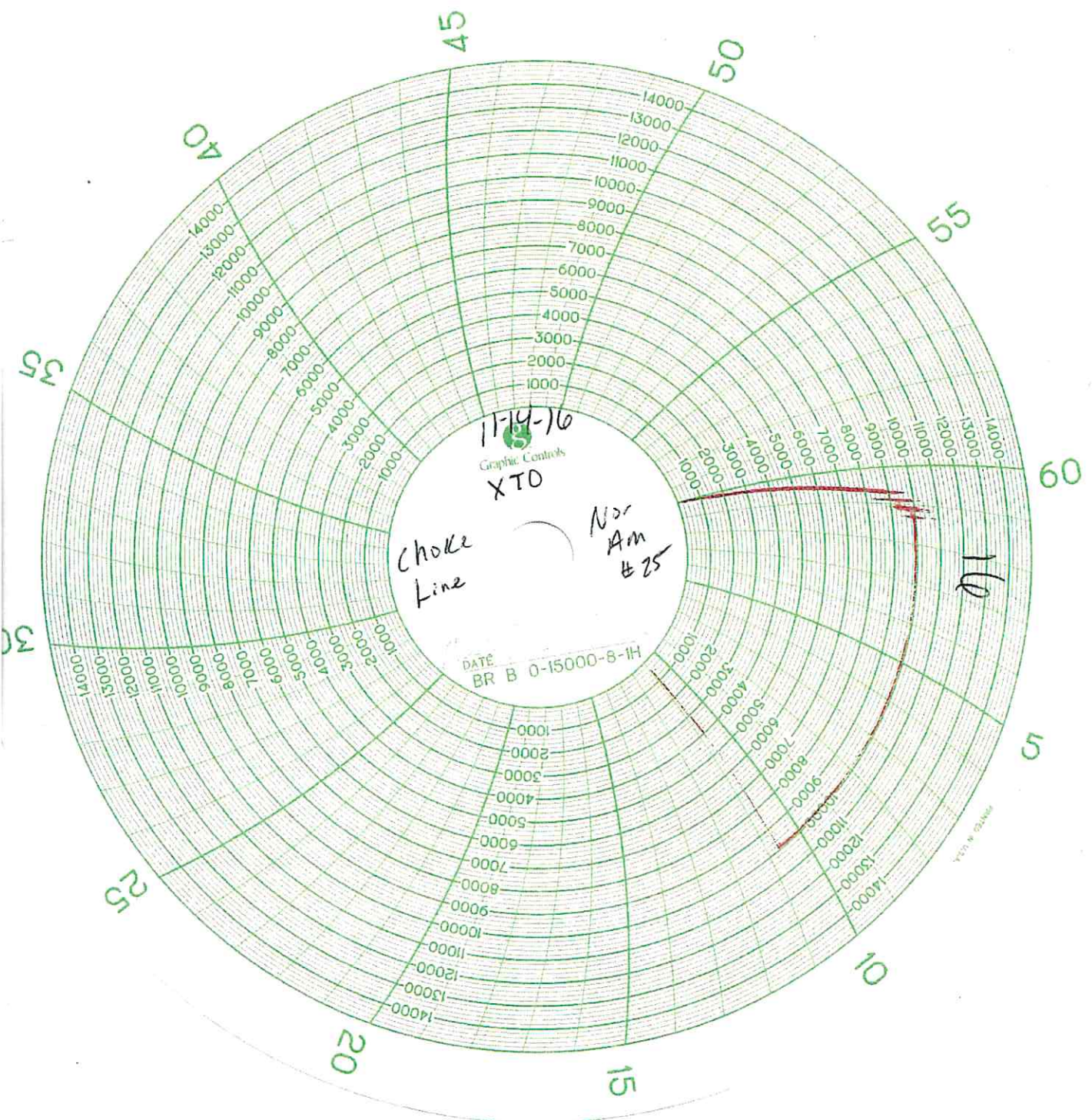
PHONE: 361-887-9807  
 FAX: 361-887-0812  
 EMAIL: crpe&s@gates.com  
 WEB: www.gates.com

**GRADE D PRESSURE TEST CERTIFICATE**

Customer :	AUSTIN DISTRIBUTING	Test Date:	6/8/2014
Customer Ref. :	PENDING	Hose Serial No.:	D-060814-1
Invoice No. :	201709	Created By:	NORMA
Product Description:	FD3.042.0R41/16.5KFLGE/E LE		
End Fitting 1 :	4 1/16 in.5K FLG	End Fitting 2 :	4 1/16 in.5K FLG
Gates Part No. :	4774-6001	Assembly Code :	L33090011513D-060814-1
Working Pressure :	5,000 PSI	Test Pressure :	7,500 PSI

Gates E & S North America, Inc. certifies that the following hose assembly has been tested to the Gates Oilfield Roughneck Agreement/Specification requirements and passed the 15 minute hydrostatic test per API Spec 7K/Q1, Fifth Edition, June 2010, Test pressure 9.6.7 and per Table 9 to 7,500 psi in accordance with this product number. Hose burst pressure 9.6.7.2 exceeds the minimum of 2.5 times the working pressure per Table 9.

Quality:	QUALITY	Technical Supervisor :	PRODUCTION
Date :	6/8/2014	Date :	6/8/2014
Signature :	<i>[Signature]</i>	Signature :	<i>[Signature]</i>



11-14-16  
Graphic Controls  
XTO

Choke  
Line

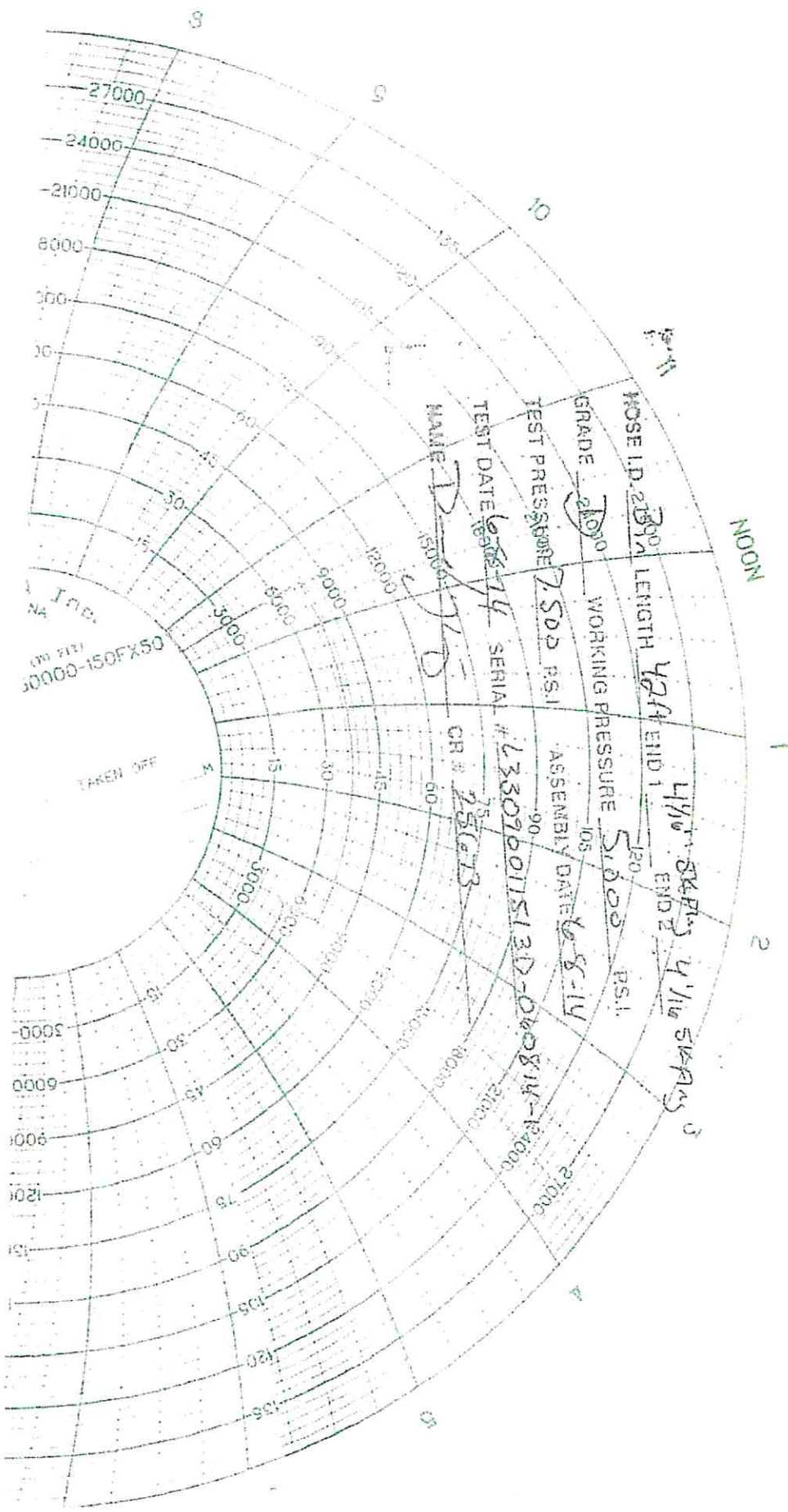
Nor  
Am  
#25

DATE  
BR B 0-15000-8-1H

110

10000





NA Inc.  
 (70 717)  
 10000-150FX50

TAKEN OFF

HOSE I.D. 2 1/2" LENGTH 424' END 1 4 1/2" BRKING 4 1/2" STARS  
 END 2  
 GRADE 2100 WORKING PRESSURE 5120 PS.I.  
 TEST PRESSURE 7500 PS.I. ASSEMBLY DATE 10-8-14  
 TEST DATE 10-8-14 SERIAL # L33096017513D-010814-124000  
 NAME D. J. D. CR # 25613

NOON

1

2

4

5