

Form 3160-3  
(June 2015)FORM APPROVED  
OMB No. 1004-0137  
Expires: January 31, 2018

UNITED STATES  
DEPARTMENT OF THE INTERIOR  
BUREAU OF LAND MANAGEMENT  
**APPLICATION FOR PERMIT TO DRILL OR REENTER**

1a. Type of work: <input type="checkbox"/> DRILL <input type="checkbox"/> REENTER 1b. Type of Well: <input checked="" type="checkbox"/> Oil Well <input checked="" type="checkbox"/> Gas Well <input type="checkbox"/> Other 1c. Type of Completion: <input type="checkbox"/> Hydraulic Fracturing <input type="checkbox"/> Single Zone <input type="checkbox"/> Multiple Zone			5. Lease Serial No.  6. If Indian, Allottee or Tribe Name  7. If Unit or CA Agreement, Name and No.  8. Lease Name and Well No.
2. Name of Operator			9. API Well No. <b>30 015 47482</b>
3a. Address		3b. Phone No. (include area code)	10. Field and Pool, or Exploratory
4. Location of Well (Report location clearly and in accordance with any State requirements. *) At surface At proposed prod. zone			11. Sec., T. R. M. or Blk. and Survey or Area
14. Distance in miles and direction from nearest town or post office*		12. County or Parish	13. State
15. Distance from proposed* location to nearest property or lease line, ft. (Also to nearest drig. unit line, if any)	16. No of acres in lease	17. Spacing Unit dedicated to this well	
18. Distance from proposed location* to nearest well, drilling, completed, applied for, on this lease, ft.	19. Proposed Depth	20. BLM/BIA Bond No. in file	
21. Elevations (Show whether DF, KDB, RT, GL, etc.)	22. Approximate date work will start*	23. Estimated duration	
24. Attachments			

The following, completed in accordance with the requirements of Onshore Oil and Gas Order No. 1, and the Hydraulic Fracturing rule per 43 CFR 3162.3-3 (as applicable)

- |   |   |
|---|---|
| 1. Well plat certified by a registered surveyor.<br>2. A Drilling Plan.<br>3. A Surface Use Plan (if the location is on National Forest System Lands, the SUPO must be filed with the appropriate Forest Service Office). | 4. Bond to cover the operations unless covered by an existing bond on file (see Item 20 above).<br>5. Operator certification.<br>6. Such other site specific information and/or plans as may be requested by the BLM. |
|---|---|

25. Signature	Name (Printed/Typed)	Date
Title		
Approved by (Signature)	Name (Printed/Typed)	Date
Title		
Office		

Application approval does not warrant or certify that the applicant holds legal or equitable title to those rights in the subject lease which would entitle the applicant to conduct operations thereon.  
 Conditions of approval, if any, are attached.

Title 18 U.S.C. Section 1001 and Title 43 U.S.C. Section 1212, make it a crime for any person knowingly and willfully to make to any department or agency of the United States any false, fictitious or fraudulent statements or representations as to any matter within its jurisdiction.

Oil base muds are not to be used until fresh water zones are cased and cemented providing isolation from the oil or diesel. This includes synthetic oils. Oil based mud, drilling fluids and solids must be contained in a steel closed loop system

- Will require a directional survey with the C-104

NSL Will require a administrative order for non-standard location prior to placing the well on production

(Continued on page 2)

Once the well is spud, to prevent ground water contamination through whole or partial conduits from the surface, the operator shall drill without interruption through the fresh water zone or zones and shall immediately set in cement the water protection string

KP 9/23/2020 GEO Review

\*(Instructions on page 2)

APPROVED WITH CONDITIONS

Approval Date: 09/21/2020

Entered - KMS NMOCD

DISTRICT I  
1625 N. FRENCH DR., HOBBS, NM 88240  
Phone: (575) 393-6161 Fax: (575) 393-0720

DISTRICT II  
811 S. FIRST ST., ARTESIA, NM 88210  
Phone: (575) 748-1283 Fax: (575) 748-9720

DISTRICT III  
1000 RIO BRAZOS RD., AZTEC, NM 87410  
Phone: (505) 334-6178 Fax: (505) 334-6170

DISTRICT IV  
1220 S. ST. FRANCIS DR., SANTA FE, NM 87505  
Phone: (505) 476-3460 Fax: (505) 476-3462

State of New Mexico  
Energy, Minerals & Natural Resources Department  
**OIL CONSERVATION DIVISION**  
1220 SOUTH ST. FRANCIS DR.  
Santa Fe, New Mexico 87505

Form C-102  
Revised August 1, 2011  
Submit one copy to appropriate  
District Office

☐ AMENDED REPORT

**WELL LOCATION AND ACREAGE DEDICATION PLAT**

API Number 30-015- 47482	Pool Code 98220	Pool Name Purple Sage; Wolfcamp (Gas)
Property Code 324974	Property Name MOMBA FEDERAL COM	Well Number 701H
OGRID No. 229137	Operator Name COG OPERATING, LLC	Elevation 2908.6'

**Surface Location**


UL or lot No.	Section	Township	Range	Lot Idn	Feet from the	North/South line	Feet from the	East/West line	County
0	13	26-S	28-E		320	SOUTH	1490	EAST	EDDY

**Bottom Hole Location If Different From Surface**

UL or lot No.	Section	Township	Range	Lot Idn	Feet from the	North/South line	Feet from the	East/West line	County
4	36	26-S	28-E		200	SOUTH	330	EAST	EDDY

Dedicated Acres	Joint or Infill	Consolidation Code	Order No.
<del>800</del> 767.94			

NO ALLOWABLE WILL BE ASSIGNED TO THIS COMPLETION UNTIL ALL INTERESTS HAVE BEEN CONSOLIDATED  
OR A NON-STANDARD UNIT HAS BEEN APPROVED BY THE DIVISION

<p>FTP 10' FNL &amp; 330' FEL Y=376726.9 N X=634318.6 E LAT.=32.035347° N LONG.=104.033268° W GRID AZ. TO FTP 105°32'57"</p> <p>POINT LEGEND</p> <table><tr><th></th><th></th></tr><tr><td>1</td><td>Y=376722.1 N X=631964.1 E</td></tr><tr><td>2</td><td>Y=376739.0 N X=634648.5 E</td></tr><tr><td>3</td><td>Y=374114.2 N X=634669.2 E</td></tr><tr><td>4</td><td>Y=371496.9 N X=634673.2 E</td></tr><tr><td>5</td><td>Y=368879.6 N X=634677.3 E</td></tr><tr><td>6</td><td>Y=366299.9 N X=634548.1 E</td></tr><tr><td>7</td><td>Y=363894.2 N X=634621.6 E</td></tr><tr><td>8</td><td>Y=366235.3 N X=632017.2 E</td></tr></table> <p>LTP 330' FSL &amp; 330' FEL Y=364223.2 N X=634285.7 E LAT.=32.000975° N LONG.=104.033486° W</p>			1	Y=376722.1 N X=631964.1 E	2	Y=376739.0 N X=634648.5 E	3	Y=374114.2 N X=634669.2 E	4	Y=371496.9 N X=634673.2 E	5	Y=368879.6 N X=634677.3 E	6	Y=366299.9 N X=634548.1 E	7	Y=363894.2 N X=634621.6 E	8	Y=366235.3 N X=632017.2 E	<p>NAD 83 NME SURFACE LOCATION Y=377049.6 N X=633158.9 E LAT.=32.036243° N LONG.=104.037008° W</p> <p>LEASE X-ING LAT.=32.035374° N LONG.=104.033382° W</p> <p>LEASE X-ING LAT.=32.028161° N LONG.=104.033314° W</p> <p>LEASE X-ING LAT.=32.020963° N LONG.=104.033360° W</p> <p>LEASE X-ING LAT.=32.006666° N LONG.=104.033450° W</p> <p>NAD 83 NME PROPOSED BOTTOM HOLE LOCATION Y=364093.2 N X=634285.4 E LAT.=32.000618° N LONG.=104.033489° W</p>	<p><b>OPERATOR CERTIFICATION</b></p> <p>I hereby certify that the information herein is true and complete to the best of my knowledge and belief, and that this organization either owns a working interest or unleased mineral interest in the land including the proposed bottom hole location or has a right to drill this well at this location pursuant to a contract with an owner of such mineral or working interest, or to a voluntary pooling agreement or a compulsory pooling order heretofore entered by the division.</p> <p><i>Stan Wagner</i> 5/11/20 Signature Date Stan Wagner Printed Name E-mail Address</p> <p><b>SURVEYOR CERTIFICATION</b></p> <p>I hereby certify that the well location shown on this plat was plotted from field notes of actual surveys made by me or under my supervision, and that the same is true and correct to the best of my belief.</p> <p>APRIL 10, 2020 Date of Survey Signature &amp; Seal of Professional Surveyor  Certificate No. CHAD HARCROW 17777 W.O. # 20-570 DRAWN BY: WN</p>
1	Y=376722.1 N X=631964.1 E																			
2	Y=376739.0 N X=634648.5 E																			
3	Y=374114.2 N X=634669.2 E																			
4	Y=371496.9 N X=634673.2 E																			
5	Y=368879.6 N X=634677.3 E																			
6	Y=366299.9 N X=634548.1 E																			
7	Y=363894.2 N X=634621.6 E																			
8	Y=366235.3 N X=632017.2 E																			

Intent ☒ As Drilled ☐

API #  
30-025-

Operator Name:	Property Name:	Well Number
COG Operating LLC	Momba Federal Com	701H

Kick Off Point (KOP)

UL	Section	Township	Range	Lot	Feet	From N/S	Feet	From E/W	County
O	13	26S	28E						Eddy
Latitude					Longitude				NAD
									83

First Take Point (FTP)

UL	Section	Township	Range	Lot	Feet	From N/S	Feet	From E/W	County
A	24	26S	28E		10	North	330	East	Eddy
Latitude					Longitude				NAD
32.035347					-104.033268				NAD 83

Last Take Point (LTP)

UL	Section	Township	Range	Lot	Feet	From N/S	Feet	From E/W	County
	36	26S	28E	4	330	South	330	East	Eddy
Latitude					Longitude				NAD
32.000975					-104.033486				NAD 83

Is this well the defining well for the Horizontal Spacing Unit? ☐ No

Is this well an infill well? ☐ Yes

If infill is yes please provide API if available, Operator Name and well number for Defining well for Horizontal Spacing Unit.

API #  
30-025-

Operator Name:	Property Name:	Well Number
COG Operating LLC	Momba Federal Com	702H

KZ 06/29/2018

District I  
1625 N. French Dr., Hobbs, NM 88240  
District II  
811 S. First St., Artesia, NM 88210  
District III  
1000 Rio Brazos Road, Aztec, NM 87410  
District IV  
1220 S. St. Francis Dr., Santa Fe, NM 87505

State of New Mexico  
Energy, Minerals and Natural Resources Department  
Oil Conservation Division  
1220 South St. Francis Dr.  
Santa Fe, NM 87505

Submit Original  
to Appropriate  
District Office

## GAS CAPTURE PLAN

Date: 4/27/20

☒ Original Operator & OGRID No.: COG Operating LLC, (229137)

☐ Amended - Reason for Amendment: \_\_\_\_\_

This Gas Capture Plan outlines actions to be taken by the Operator to reduce well/production facility flaring/venting for new completion (new drill, recomple to new zone, re-frac) activity.

*Note: Form C-129 must be submitted and approved prior to exceeding 60 days allowed by Rule (Subsection A of 19.15.18.12 NMAC).*

### Well(s)/Production Facility – Name of facility

The well(s) that will be located at the production facility are shown in the table below.

Well Name	API	Well Location (ULSTR)	Footages	Expected MCF/D	Flared or Vented	Comments
Momba Federal Com 701H	30-015-	O-13-26S-28E	320' FSL & 1490' FEL	±4900	None Planned	APD Submission Plan Subject to change
Momba Federal Com 702H	30-015-	O-13-26S-28E	320' FSL & 1520' FEL	±4900	None Planned	APD Submission Plan Subject to change
Momba Federal Com 703H	30-015-	O-13-26S-28E	320' FSL & 1550' FEL	±4900	None Planned	APD Submission Plan Subject to change

### Gathering System and Pipeline Notification

Well(s) will be connected to a production facility after flowback operations are complete, if gas transporter system is in place. The gas produced from production facility is dedicated to **ETC Field Services LLC** and will be connected to **Red Bluff** low pressure gathering system located in **Culberson** County, Texas. **COG Operating LLC** provides (periodically) to **ETC Field Services LLC** a drilling, completion and estimated first production date for wells that are scheduled to be drilled in the foreseeable future. In addition, **COG Operating LLC** and **ETC Field Services LLC** have periodic conference calls to discuss changes to drilling and completion schedules. Gas from these wells will be processed at **ETC Field Services LLC** Processing Plant located in Sec. **35**, Blk. **57**, **T2**, **Culberson** County, Texas. The actual flow of the gas will be based on compression operating parameters and gathering system pressures.

### Flowback Strategy

After the fracture treatment/completion operations, well(s) will be produced to temporary production tanks and gas will be flared or vented. During flowback, the fluids and sand content will be monitored. When the produced fluids contain minimal sand, the wells will be turned to production facilities. Gas sales should start as soon as the wells start flowing through the production facilities, unless there are operational issues on Gas Transporter system at that time. Based on current information, it is Operator's belief the system can take this gas upon completion of the well(s).

Safety requirements during cleanout operations from the use of underbalanced air cleanout systems may necessitate that sand and non-pipeline quality gas be vented and/or flared rather than sold on a temporary basis.

### Alternatives to Reduce Flaring

Below are alternatives considered from a conceptual standpoint to reduce the amount of gas flared.

- Power Generation – On lease
  - Only a portion of gas is consumed operating the generator, remainder of gas will be flared
- Compressed Natural Gas – On lease
  - Gas flared would be minimal, but might be uneconomical to operate when gas volume declines

- NGL Removal – On lease
  - Plants are expensive, residue gas is still flared, and uneconomical to operate when gas volume declines

# PECOS DISTRICT DRILLING OPERATIONS CONDITIONS OF APPROVAL

<b>OPERATOR'S NAME:</b>	<b>COG Operating LLC</b>
<b>LEASE NO.:</b>	<b>NMNM012559</b>
<b>WELL NAME &amp; NO.:</b>	<b>Momba Federal Com 701H</b>
<b>SURFACE HOLE FOOTAGE:</b>	<b>320' FSL &amp; 1490' FEL</b>
<b>BOTTOM HOLE FOOTAGE:</b>	<b>200' FSL &amp; 330' FEL</b>
<b>LOCATION:</b>	<b>Section 13, T 26S, R 28E, NMPM</b>
<b>COUNTY:</b>	<b>Eddy County, New Mexico</b>

H2S	<input type="radio"/> Yes	<input checked="" type="radio"/> No	
Potash	<input checked="" type="radio"/> None	<input type="radio"/> Secretary	<input type="radio"/> R-111-P
Cave/Karst Potential	<input type="radio"/> Low	<input checked="" type="radio"/> Medium	<input type="radio"/> High
Variance	<input type="radio"/> None	<input checked="" type="radio"/> Flex Hose	<input type="radio"/> Other
Wellhead	<input checked="" type="radio"/> Conventional	<input type="radio"/> Multibowl	<input type="radio"/> Both
Other	<input type="checkbox"/> 4 String Area	<input type="checkbox"/> Capitan Reef	<input type="checkbox"/> WIPP
Other	<input type="checkbox"/> Fluid Filled	<input type="checkbox"/> Cement Squeeze	<input type="checkbox"/> Pilot Hole
Special Requirements	<input type="checkbox"/> Water Disposal	<input checked="" type="checkbox"/> COM	<input type="checkbox"/> Unit

## A. HYDROGEN SULFIDE

- Hydrogen Sulfide (H2S) monitors shall be installed prior to drilling out the surface shoe. If H2S is detected in concentrations greater than 100 ppm, the Hydrogen Sulfide area shall meet Onshore Order 6 requirements, which includes equipment and personnel/public protection items. If Hydrogen Sulfide is encountered, provide measured values and formations to the BLM.

## B. CASING

- The **10-3/4"** surface casing shall be set a minimum of 25' above the salt and cemented to surface.
  - If cement does not circulate to surface**, the appropriate BLM office shall be notified and a temperature survey utilizing an electronic type temperature survey with surface log readout will be used or a cement bond log shall be run to verify the top of the cement. Temperature survey will be run a minimum of **6 hours** after pumping cement, ideally between 8-10 hours after.
  - WOC time for a primary cement job will be a minimum of **8 hours** or **500 psi** compressive strength, whichever is greater. This is to include the lead cement.
  - If cement falls back, remedial cementing will be done prior to drilling out the shoe.
  - WOC time for a remedial job will be a minimum of 4 hours after bringing cement to surface or 500 psi compressive strength, whichever is greater.

2. The **7-5/8"** intermediate casing shall be cemented to surface.
  - a. **If cement does not circulate to surface**, see B.1.a, c & d.
3. The **5-1/2"** production casing shall be cemented with at least **200'/100'(if liner) tie-back** into the previous casing. Operator shall provide method of verification.
  - a. **If cement does not circulate to surface**, see B.1.a, c & d.
  - b. If cement does not circulate to surface on the first two casing strings, the cement on the 3<sup>rd</sup> casing string must come to surface.

#### **C. PRESSURE CONTROL**

1. Minimum working pressure of the blowout preventer (BOP) and related equipment (BOPE) required for drilling below the surface casing shoe shall be **3000 (3M)** psi.
2. Minimum working pressure of the blowout preventer (BOP) and related equipment (BOPE) required for drilling below the intermediate casing shoe shall be **5000 (5M)** psi.
3. Required safety valves, with appropriate wrenches and subs for the drill string being utilized, will be in the open position and accessible on the rig floor.

#### **D. SPECIAL REQUIREMENTS**

1. Submit a Communitization Agreement to the Carlsbad Field Office, 620 E Greene St. Carlsbad, New Mexico 88220, at least 90 days before the anticipated date of first production from a well subject to a spacing order issued by the New Mexico Oil Conservation Division. The Communitization Agreement will include the signatures of all working interest owners in all Federal and Indian leases subject to the Communitization Agreement (i.e., operating rights owners and lessees of record), or certification that the operator has obtained the written signatures of all such owners and will make those signatures available to the BLM immediately upon request.
  - a. The well sign on location shall include the surface and bottom hole lease numbers. When the Communitization Agreement number is known, it shall also be on the sign.

**DR 09/18/2020**

## **GENERAL REQUIREMENTS**

1. The BLM is to be notified in advance for a representative to witness:
  - a. Spudding the well (minimum of 24 hours)
  - b. Setting and/or Cementing of all casing strings (minimum of 4 hours)
  - c. BOP/BOPE tests (minimum of 4 hours)
    - ☒ Eddy County: Call the Carlsbad Field Office, (575) 361-2822
    - ☒ Lea County: Call the Hobbs Field Station, (575) 393-3612
2. Unless the production casing has been run and cemented or the well has been properly plugged, the drilling rig shall not be removed from over the hole without prior approval.
  - a. In the event the operator has proposed to drill multiple wells utilizing a skid/walking rig. Operator shall secure the wellbore on the current well, after installing and testing the wellhead, by installing a blind flange of like pressure rating to the wellhead and a pressure gauge that can be monitored while drilling is performed on the other well(s).
  - b. When the operator proposes to set surface casing with Spudder Rig:
    - i. Notify the BLM when moving in and removing the Spudder Rig.
    - ii. Notify the BLM when moving in the 2<sup>nd</sup> Rig. Rig to be moved in within 90 days of notification that Spudder Rig has left the location.
    - iii. BOP/BOPE test to be conducted per Onshore Oil and Gas Order No. 2 as soon as 2nd Rig is rigged up on well.
3. Floor controls are required for 3M or Greater systems. These controls will be on the rig floor, unobstructed, readily accessible to the driller and will be operational at all times during drilling and/or completion activities. Rig floor is defined as the area immediately around the rotary table; the area immediately above the substructure on which the draw works are located, this does not include the dog house or stairway area.
4. The record of the drilling rate along with the GR/N well log run from TD to surface (horizontal well – vertical portion of hole) shall be available upon request. The Rustler top and top and bottom of Salt are to be recorded on the Completion Report.

### **A. CASING**

1. Changes to the approved APD casing program need prior approval if the items substituted are of lesser grade or different casing size or are Non-API. The Operator can exchange the components of the proposal with that of superior strength (i.e. changing from J-55 to N-80, or from 36# to 40#). Changes to the approved cement program need prior approval if the altered cement plan has less volume or strength or if the changes are substantial (i.e. Multistage tool, ECP, etc.). The initial wellhead installed on the well will remain on the well with spools used as needed.
2. Wait on cement (WOC) for Potash Areas: After cementing but before commencing any tests, the casing string shall stand cemented under pressure until both of the

following conditions have been met: 1) cement reaches a minimum compressive strength of 500 psi for all cement blends, 2) until cement has been in place at least 24 hours. WOC time will be recorded in the driller's log. The casing integrity test can be done (prior to the cement setting up) immediately after bumping the plug.

3. Wait on cement (WOC) for Water Basin: After cementing but before commencing any tests, the casing string shall stand cemented under pressure until both of the following conditions have been met: 1) cement reaches a minimum compressive strength of 500 psi at the shoe, 2) until cement has been in place at least 8 hours. WOC time will be recorded in the driller's log. See individual casing strings for details regarding lead cement slurry requirements. The casing integrity test can be done (prior to the cement setting up) immediately after bumping the plug.
4. Provide compressive strengths including hours to reach required 500 pounds compressive strength prior to cementing each casing string. Have well-specific cement details onsite prior to pumping the cement for each casing string.
5. No pea gravel permitted for remedial or fall back remedial without prior authorization from the BLM engineer.
6. On the portion of well approved for a 5M BOPE system or greater, a pressure integrity test of each casing shoe shall be performed. Formation at the shoe shall be tested to a minimum of the mud weight equivalent anticipated to control the formation pressure to the next casing depth or at total depth of the well. This test shall be performed before drilling more than 20 feet of new hole.
7. If hardband drill pipe is rotated inside casing, returns will be monitored for metal. If metal is found in samples, drill pipe will be pulled and rubber protectors which have a larger diameter than the tool joints of the drill pipe will be installed prior to continuing drilling operations.
8. Whenever a casing string is cemented in the R-111-P potash area, the NMOCD requirements shall be followed.

## **B. PRESSURE CONTROL**

1. All blowout preventer (BOP) and related equipment (BOPE) shall comply with well control requirements as described in Onshore Oil and Gas Order No. 2 and API RP 53 Sec. 17.
2. If a variance is approved for a flexible hose to be installed from the BOP to the choke manifold, the following requirements apply: The flex line must meet the requirements of API 16C. Check condition of flexible line from BOP to choke manifold, replace if exterior is damaged or if line fails test. Line to be as straight as possible with no hard bends and is to be anchored according to Manufacturer's requirements. The flexible hose can be exchanged with a hose of equal size and equal or greater pressure rating. Anchor requirements, specification sheet and hydrostatic pressure test certification matching the hose in service, to be onsite for review. These documents shall be posted in the company man's trailer and on the rig floor.

3. If the operator has proposed a multi-bowl wellhead assembly in the APD, it must meet or exceed the pressure rating of the BOP system. Additionally, the following requirements must be met:
  - a. Wellhead shall be installed by manufacturer's representatives, submit documentation with subsequent sundry.
  - b. If the welding is performed by a third party, the manufacturer's representative shall monitor the temperature to verify that it does not exceed the maximum temperature of the seal.
  - c. Manufacturer representative shall install the test plug for the initial BOP test.
  - d. If the cement does not circulate and one inch operations would have been possible with a standard wellhead, the well head shall be cut off, cementing operations performed and another wellhead installed.
  - e. Whenever any seal subject to test pressure is broken, all the tests in Onshore Order 2 III.A.2.i must be followed.
5. The appropriate BLM office shall be notified a minimum of 4 hours in advance for a representative to witness the BOP/BOPE tests.
  - a. In a water basin, for all casing strings utilizing slips, these are to be set as soon as the crew and rig are ready and any fallback cement remediation has been done. The casing cut-off and BOP installation can be initiated four hours after installing the slips, which will be approximately six hours after bumping the plug. For those casing strings not using slips, the minimum wait time before cut-off is eight hours after bumping the plug. BOP/BOPE testing can begin after cut-off or once cement reaches 500 psi compressive strength (including lead when specified), whichever is greater. However, if the float does not hold, cut-off cannot be initiated until cement reaches 500 psi compressive strength (including lead when specified).
  - b. In potash areas, for all casing strings utilizing slips, these are to be set as soon as the crew and rig are ready and any fallback cement remediation has been done. For all casing strings, casing cut-off and BOP installation can be initiated at twelve hours after bumping the plug. However, **no tests** shall commence until the cement has had a minimum of 24 hours setup time, except the casing pressure test which can be initiated immediately after bumping the plug (only applies to single-stage cement jobs).
  - c. The tests shall be done by an independent service company utilizing a test plug. The results of the test shall be made available upon request.
  - d. The test shall be run on a 5000 psi chart for a 2-3M BOP/BOP, on a 10000 psi chart for a 5M BOP/BOPE and on a 15000 psi chart for a 10M BOP/BOPE. If a linear chart is used, it shall be a one hour chart. A circular chart shall have a maximum 2 hour clock. If a twelve hour or twenty-four hour chart is used, tester shall make a notation that it is run with a two hour clock.
  - e. The BOP/BOPE test shall include a low pressure test from 250 to 300 psi. The test will be held for a minimum of 10 minutes. This test shall be performed prior

to the test at full stack pressure.

- f. BOP/BOPE must be tested within 500 feet of the top of the Wolfcamp formation if the time between the setting of the intermediate casing and reaching this depth exceeds 20 days. This test does not exclude the test prior to drilling out the casing shoe as per Onshore Order No. 2.

**C. DRILLING MUD**

1. Mud system monitoring equipment, with derrick floor indicators and visual and audio alarms, shall be operating before drilling into the Wolfcamp formation, and shall be used until production casing is run and cemented.

**D. WASTE MATERIAL AND FLUIDS**

1. All waste (i.e. drilling fluids, trash, salts, chemicals, sewage, gray water, etc.) created as a result of drilling operations and completion operations shall be safely contained and disposed of properly at a waste disposal facility. No waste material or fluid shall be disposed of on the well location or surrounding area.
2. Porto-johns and trash containers will be on-location during fracturing operations or any other crew-intensive operations.

# COG Operating, LLC - Momba Federal Com 701H

## 1. Geologic Formations

TVD of target	9,779' EOL	Pilot hole depth	NA
MD at TD:	22,468'	Deepest expected fresh water:	50'

Formation	Depth (TVD) from KB	Water/Mineral Bearing/ Target Zone?	Hazards*
Quaternary Fill	Surface	Water	
Rustler	501	Water	
Top of Salt	613	Salt	
Base of Salt	2005	Salt	
Lamar	2438	Salt Water	
Bell Canyon	2662	Salt Water	
Cherry Canyon	3453	Oil/Gas	
Brushy Canyon	4767	Oil/Gas	
Bone Spring Lime	6376	Oil/Gas	
U. Avalon Shale	6970	Oil/Gas	
L. Avalon Shale	7049	Oil/Gas	
1st Bone Spring Sand	7286	Oil/Gas	
2nd Bone Spring Sand	7956	Oil/Gas	
3rd Bone Spring Sand	9131	Oil/Gas	
Wolfcamp	9494	Target Oil/Gas	

## 2. Casing Program

Hole Size	Casing Interval		Csg. Size	Weight (lbs)	Grade	Conn.	SF Collapse	SF Burst	SF Tension
	From	To							
14.75	0	600	10.75	45.5	J55	STC	7.79	15.35	18.06
9.875	0	8985	7.625	29.7	HCL80	BTC	1.97	1.46	2.70
6.75	0	8785	5.5"	20	P110	BTC	1.82	2.47	3.28
6.75	8785	22,468	5.5"	20	P110	SF	1.82	2.47	2.97
BLM Minimum Safety Factor							1.125	1	1.6 Dry 1.8 Wet

Intermediate casing will be kept at least 1/3 full while running casing to mitigate collapse. Intermediate burst based on 0.7 frac gradient at the shoe with Gas Gradient 0.1 psi/ft to surface.

All casing strings will be tested in accordance with Onshore Oil and Gas Order #2 III.B.1.h

## COG Operating, LLC - Momba Federal Com 701H

	Y or N
Is casing new? If used, attach certification as required in Onshore Order #1	Y
Does casing meet API specifications? If no, attach casing specification sheet.	Y
Is premium or uncommon casing planned? If yes attach casing specification sheet.	N
Does the above casing design meet or exceed BLM's minimum standards? If not provide justification (loading assumptions, casing design criteria).	Y
Will the intermediate pipe be kept at a minimum 1/3 fluid filled to avoid approaching the collapse pressure rating of the casing?	Y
Is well located within Capitan Reef?	N
If yes, does production casing cement tie back a minimum of 50' above the Reef?	
Is well within the designated 4 string boundary?	
Is well located in SOPA but not in R-111-P?	N
If yes, are the first 2 strings cemented to surface and 3 <sup>rd</sup> string cement tied back 500' into previous casing?	
Is well located in R-111-P and SOPA?	N
If yes, are the first three strings cemented to surface?	
Is 2 <sup>nd</sup> string set 100' to 600' below the base of salt?	
Is well located in high Cave/Karst?	N
If yes, are there two strings cemented to surface?	
(For 2 string wells) If yes, is there a contingency casing if lost circulation occurs?	
Is well located in critical Cave/Karst?	N
If yes, are there three strings cemented to surface?	

## COG Operating, LLC - Momba Federal Com 701H

### 3. Cementing Program

Casing	# Sks	Wt. lb/ gal	Yld ft <sup>3</sup> / sack	H <sub>2</sub> O gal/sk	500# Comp. Strength (hours)	Slurry Description
Surf.	170	13.5	1.75	9	12	Lead: Class C + 4% Gel
	250	14.8	1.34	6.34	8	Tail: Class C + 2% CaCl <sub>2</sub>
Inter.	1400	11	2.8	19	48	Lead: NeoCem
	300	16.4	1.1	5	8	Tail: Class H
5.5 Prod	750	12.7	2	10.6	16	Lead: 35:65:6 H Blend
	1200	14.4	1.24	5.7	19	Tail: 50:50:2 Class H Blend

Volumes Subject to Observed Hole Conditions and/or Fluid Caliper Results

Lab reports with the 500 psi compressive strength time for the cement will be onsite for review.

Casing String	TOC	% Excess
Surface	0'	50%
1 <sup>st</sup> Intermediate	0'	50%
Production	8,485'	35%

#### 4. Pressure Control Equipment

N	A variance is requested for the use of a diverter on the surface casing. See attached for schematic.
---	---

BOP installed and tested before drilling which hole?	Size?	Min. Required WP	Type	x	Tested to:
12-1/4"	13-5/8"	3M	Annular	x	2500 psi
			Blind Ram		3M
			Pipe Ram	x	
			Double Ram	x	
			Other*		
8 1/2"	13-5/8"	5M	5M Annular	x	2500 psi
			Blind Ram		5M
			Pipe Ram	x	
			Double Ram	x	
			Other*		

BOP and BOPE will be installed per Onshore Order #2 requirements prior to drilling below the surface casing and will be rated to the above pressure rating or greater, see attached diagrams. Required safety valves, with appropriate wrenches and subs for the drill string being utilized, will be in the open position and accessible on the rig floor.

BOP/BOPE will be tested by an independent service company to 250 psi low and the high pressure indicated above per Onshore Order 2 requirements. The System may be upgraded to a higher pressure but still tested to the working pressure listed in the table above. If the system is upgraded all the components installed will be functional and tested.

Pipe rams will be operationally checked each 24 hour period. Blind rams will be operationally checked on each trip out of the hole. These checks will be noted on the daily tour sheets. Other accessories to the BOP equipment will include a Kelly cock and floor safety valves (inside BOP and full-opening valve) with appropriate wrenches and choke lines and choke manifold. See attached schematics.

Y	Formation integrity test will be performed per Onshore Order #2.  On Exploratory wells or on that portion of any well approved for a 5M BOPE system or greater, a pressure integrity test of each casing shoe shall be performed. Will be tested in accordance with Onshore Oil and Gas Order #2 III.B.1.i.
Y	A variance is requested for the use of a flexible choke line from the BOP to Choke Manifold. See attached for specs and hydrostatic test chart.
N	Are anchors required by manufacturer?
Y	A multibowl wellhead is being used. The BOP will be tested per Onshore Order #2 after installation on the surface casing which will cover testing requirements for a maximum of 30 days. If any seal subject to test pressure is broken the system must be tested.

## COG Operating, LLC - Momba Federal Com 701H

### 5. Mud Program

Depth		Type	Weight (ppg)	Viscosity	Water Loss
From	To				
0	Surf. Shoe	FW Gel	8.4 - 8.6	28-29	N/C
Surf csg	Int shoe	Diesel Brine Emul	8.6 - 9.4	30-40	N/C
Int shoe	Lateral TD	OBM	10.5 - 12	30-40	20

Sufficient mud materials to maintain mud properties and meet minimum lost circulation and weight increase requirements will be kept on location at all times.

What will be used to monitor the loss or gain of fluid?	PVT/Pason/Visual Monitoring
---	-----------------------------

### 6. Logging and Testing Procedures

Logging, Coring and Testing.	
Y	Will run GR/CNL from TD to surface (horizontal well – vertical portion of hole). Stated logs run will be in the Completion Report and submitted to the BLM.
N	Are Logs are planned based on well control or offset log information.
N	Drill stem test? If yes, explain.
N	Coring? If yes, explain.

Additional logs planned		Interval
N	Resistivity	Pilot Hole TD to ICP
N	Density	Pilot Hole TD to ICP
Y	CBL	Production casing (If cement not circulated to surface)
Y	Mud log	Intermediate shoe to TD
N	PEX	

## COG Operating, LLC - Momba Federal Com 701H

### 7. Drilling Conditions

Condition	Specify what type and where?
BH Pressure at deepest TVD	6105 psi at 9779' TVD
Abnormal Temperature	NO 155 Deg. F.

No abnormal pressure or temperature conditions are anticipated. Sufficient mud materials to maintain mud properties and weight increase requirements will be kept on location at all times.

Sufficient supplies of Paper/LCM for periodic sweeps to control seepage and losses will be maintained on location.

Hydrogen Sulfide (H <sub>2</sub> S) monitors will be installed prior to drilling out the surface shoe. If H <sub>2</sub> S is detected in concentrations greater than 100 ppm, the operator will comply with the provisions of Onshore Oil and Gas Order #6. If Hydrogen Sulfide is encountered, measured values and formations will be provided to the BLM.	
N	H <sub>2</sub> S is present
Y	H <sub>2</sub> S Plan attached

### 8. Other Facets of Operation

Y	Is it a walking operation?
Y	Is casing pre-set?
Y	Multi-Bowl Wellhead

x	H <sub>2</sub> S Plan.
x	BOP & Choke Schematics.
x	Directional Plan
	5M Annular Variance

**COG OPERATING LLC**  
**HYDROGEN SULFIDE DRILLING OPERATIONS PLAN**

**1. HYDROGEN SULFIDE TRAINING**

All personnel, whether regularly assigned, contracted, or employed on an unscheduled basis, will receive training from a qualified instructor in the following areas prior to commencing drilling operations on this well:

- a. The hazards and characteristics of hydrogen sulfide (H<sub>2</sub>S).
- b. The proper use and maintenance of personal protective equipment and life support systems.
- c. The proper use of H<sub>2</sub>S detectors, alarms, warning systems, briefing areas, evacuation procedures, and prevailing winds.
- d. The proper techniques for first aid and rescue procedures.

In addition, supervisory personnel will be trained in the following areas:

- a. The effects of H<sub>2</sub>S on metal components. If high tensile tubulars are to be used, personnel will be trained in their special maintenance requirements.
- b. Corrective action and shut-in procedures when drilling or reworking a well and blowout prevention and well control procedures.
- c. The contents and requirements of the H<sub>2</sub>S Drilling Operations Plan and the Public Protection Plan.

There will be an initial training session just prior to encountering a known or probable H<sub>2</sub>S zone (within 3 days or 500 feet) and weekly H<sub>2</sub>S and well control drills for all personnel in each crew. The initial training session shall include a review of the site specific H<sub>2</sub>S Drilling Operations Plan and the Public Protection Plan. This plan shall be available at the well site. All personnel will be required to carry documentation that they have received the proper training.

**2. H<sub>2</sub>S SAFETY EQUIPMENT AND SYSTEMS**

Note: All H<sub>2</sub>S safety equipment and systems will be installed, tested, and operational when drilling reaches a depth of 500 feet above, or three days prior to penetrating the first zone containing or reasonably expected to contain H<sub>2</sub>S. If H<sub>2</sub>S greater than 100 ppm is encountered in the gas stream we will shut in and install H<sub>2</sub>S equipment.

- a. Well Control Equipment:
  - Flare line.
  - Choke manifold with remotely operated choke.
  - Blind rams and pipe rams to accommodate all pipe sizes with properly sized closing unit.
  - Auxiliary equipment to include: annular preventer, mud-gas separator, rotating head.

- b. Protective equipment for essential personnel:  
Mark II Surviveair 30-minute units located in the dog house and at briefing areas.
- c. H2S detection and monitoring equipment:  
2 - portable H2S monitor positioned on location for best coverage and response. These units have warning lights and audible sirens when H2S levels of 20 ppm are reached.
- d. Visual warning systems:  
Caution/Danger signs shall be posted on roads providing direct access to location. Signs will be painted a high visibility yellow with black lettering of sufficient size to be readable at a reasonable distance from the immediate location. Bilingual signs will be used, when appropriate. See example attached.
- e. Mud Program:  
The mud program has been designed to minimize the volume of H2S circulated to the surface.
- f. Metallurgy:  
All drill strings, casings, tubing, wellhead, blowout preventers, drilling spool, kill lines, choke manifold and lines, and valves shall be suitable for H2S service.
- g. Communication:  
Company vehicles equipped with cellular telephone.

COG OPERATING LLC has conducted a review to determine if an H2S contingency plan is required for the above referenced well. We were able to conclude that any potential hazardous volume would be minimal. H2S concentrations of wells in this area from surface to TD are low enough; therefore, we do not believe that an H2S contingency plan is necessary.

# **W A R N I N G**

**YOU ARE ENTERING AN H<sub>2</sub>S AREA  
AUTHORIZED PERSONNEL ONLY**

- 1. BEARDS OR CONTACT LENSES NOT ALLOWED***
- 2. HARD HATS REQUIRED***
- 3. SMOKING IN DESIGNATED AREAS ONLY***
- 4. BE WIND CONSCIOUS AT ALL TIMES***
- 5. CK WITH COG OPERATING LLC FOREMAN AT MAIN OFFICE***

**COG OPERATING LLC**

**1-575-748-6940**

## **EMERGENCY CALL LIST**

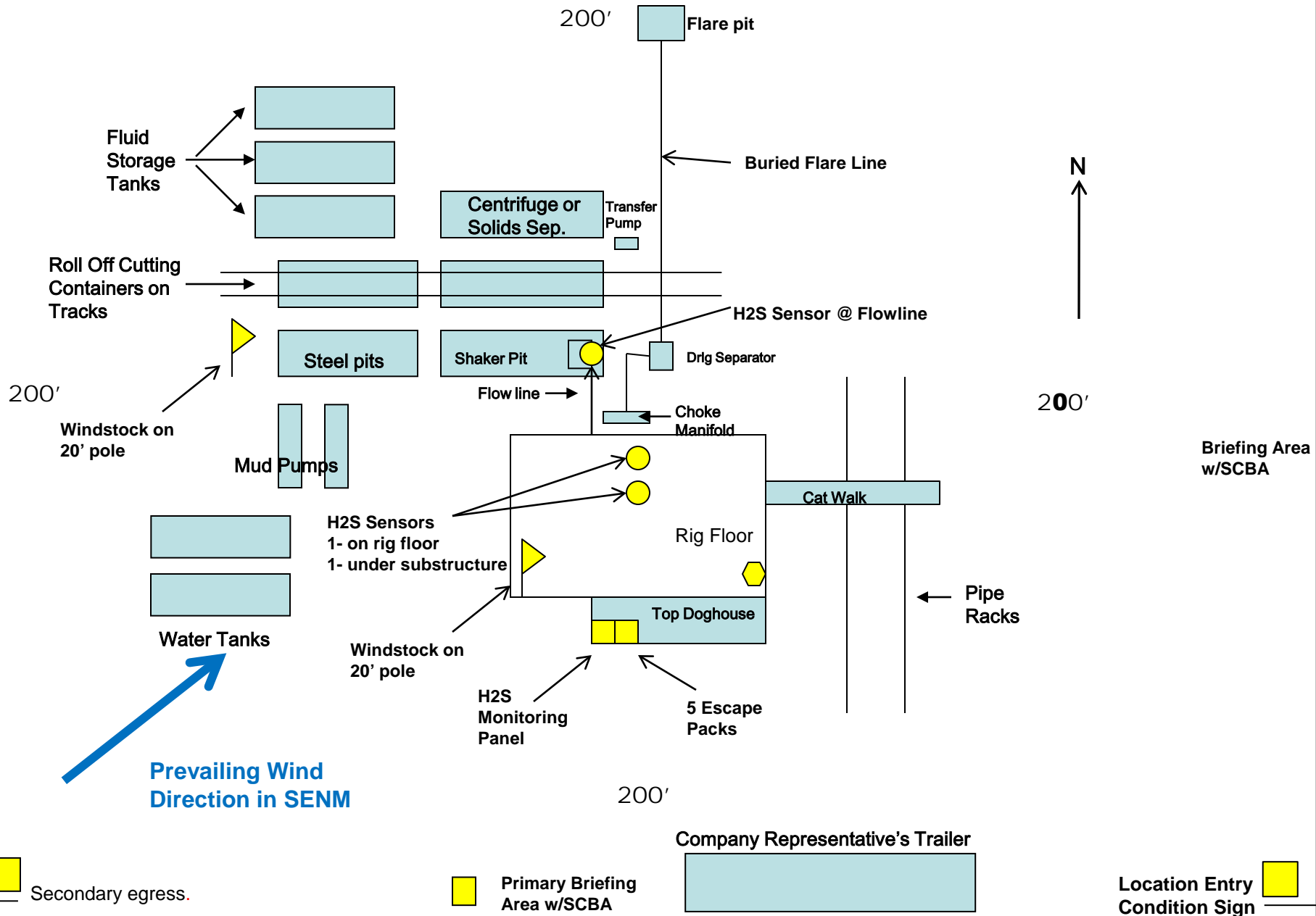
	<b><u>OFFICE</u></b>	<b><u>MOBILE</u></b>
COG OPERATING LLC OFFICE	575-748-6940	
SETH WILD	432-683-7443	432-528-3633
WALTER ROYE	575-748-6940	432-934-1886

## **EMERGENCY RESPONSE NUMBERS**

	<b><u>OFFICE</u></b>
STATE POLICE	575-748-9718
EDDY COUNTY SHERIFF	575-746-2701
EMERGENCY MEDICAL SERVICES (AMBULANCE)	911 or 575-746-2701
EDDY COUNTY EMERGENCY MANAGEMENT (HARRY BURGESS)	575-887-9511
STATE EMERGENCY RESPONSE CENTER (SERC)	575-476-9620
CARLSBAD POLICE DEPARTMENT	575-885-2111
CARLSBAD FIRE DEPARTMENT	575-885-3125
NEW MEXICO OIL CONSERVATION DIVISION	575-748-1283
INDIAN FIRE & SAFETY	800-530-8693
HALLIBURTON SERVICES	800-844-8451

COG Operating LLC  
H<sub>2</sub>S Equipment Schematic  
Terrain: Shinnery sand hills.

Well pad will be 400' x 400'  
with cellar in center of pad



# **NDB WEST**

**EDDY COUNTY, NM  
TATER SALAD & MOMBA FED COM  
MOMBA FED COM 701H**

**OWB**

**Plan: PWP1**

## **Standard Survey Report**

**30 April, 2020**

# Concho Resources LLC

## Survey Report

<b>Company:</b>	NDB WEST	<b>Local Co-ordinate Reference:</b>	Well MOMBA FED COM 701H
<b>Project:</b>	EDDY COUNTY, NM	<b>TVD Reference:</b>	KB=26' @ 2934.0usft (McVAY 8)
<b>Site:</b>	TATER SALAD & MOMBA FED COM	<b>MD Reference:</b>	KB=26' @ 2934.0usft (McVAY 8)
<b>Well:</b>	MOMBA FED COM 701H	<b>North Reference:</b>	Grid
<b>Wellbore:</b>	OWB	<b>Survey Calculation Method:</b>	Minimum Curvature
<b>Design:</b>	PWP1	<b>Database:</b>	edm

<b>Project</b>	EDDY COUNTY, NM		
<b>Map System:</b>	US State Plane 1927 (Exact solution)	<b>System Datum:</b>	Mean Sea Level
<b>Geo Datum:</b>	NAD 1927 (NADCON CONUS)		
<b>Map Zone:</b>	New Mexico East 3001		

<b>Well</b>	MOMBA FED COM 701H				
<b>Well Position</b>	<b>+N/-S</b>	0.0 usft	<b>Northing:</b>	376,992.20 usft	<b>Latitude:</b> 32° 2' 10.028 N
	<b>+E/-W</b>	0.0 usft	<b>Easting:</b>	591,973.60 usft	<b>Longitude:</b> 104° 2' 11.484 W
<b>Position Uncertainty</b>		3.0 usft	<b>Wellhead Elevation:</b>	usft	<b>Ground Level:</b> 2,908.6 usft

<b>Wellbore</b>	OWB				
<b>Magnetics</b>	<b>Model Name</b>	<b>Sample Date</b>	<b>Declination (°)</b>	<b>Dip Angle (°)</b>	<b>Field Strength (nT)</b>
	IGRF2015	4/30/2020	6.84	59.78	47,487.28599497

<b>Design</b>	PWP1				
<b>Audit Notes:</b>					
<b>Version:</b>	<b>Phase:</b>	PLAN	<b>Tie On Depth:</b>	0.0	
<b>Vertical Section:</b>	<b>Depth From (TVD) (usft)</b>	<b>+N/-S (usft)</b>	<b>+E/-W (usft)</b>	<b>Direction (°)</b>	
	0.0	0.0	0.0	175.03	

<b>Survey Tool Program</b>	<b>Date</b>	4/30/2020			
<b>From (usft)</b>	<b>To (usft)</b>	<b>Survey (Wellbore)</b>	<b>Tool Name</b>	<b>Description</b>	
0.0	9,277.0	PWP1 (OWB)	Standard Keeper 104	Standard Wireline Keeper ver 1.0.4	
9,277.0	22,468.8	PWP1 (OWB)	MWD+IFR1+FDIR	OWSG MWD + IFR1 + FDIR Correction	

<b>Planned Survey</b>										
<b>Measured Depth (usft)</b>	<b>Inclination (°)</b>	<b>Azimuth (°)</b>	<b>Vertical Depth (usft)</b>	<b>+N/-S (usft)</b>	<b>+E/-W (usft)</b>	<b>Vertical Section (usft)</b>	<b>Dogleg Rate (°/100usft)</b>	<b>Build Rate (°/100usft)</b>	<b>Turn Rate (°/100usft)</b>	
0.0	0.00	0.00	0.0	0.0	0.0	0.0	0.00	0.00	0.00	
100.0	0.00	0.00	100.0	0.0	0.0	0.0	0.00	0.00	0.00	
200.0	0.00	0.00	200.0	0.0	0.0	0.0	0.00	0.00	0.00	
300.0	0.00	0.00	300.0	0.0	0.0	0.0	0.00	0.00	0.00	
400.0	0.00	0.00	400.0	0.0	0.0	0.0	0.00	0.00	0.00	
500.0	0.00	0.00	500.0	0.0	0.0	0.0	0.00	0.00	0.00	
600.0	0.00	0.00	600.0	0.0	0.0	0.0	0.00	0.00	0.00	
700.0	0.00	0.00	700.0	0.0	0.0	0.0	0.00	0.00	0.00	
800.0	0.00	0.00	800.0	0.0	0.0	0.0	0.00	0.00	0.00	
900.0	0.00	0.00	900.0	0.0	0.0	0.0	0.00	0.00	0.00	
1,000.0	0.00	0.00	1,000.0	0.0	0.0	0.0	0.00	0.00	0.00	
1,100.0	0.00	0.00	1,100.0	0.0	0.0	0.0	0.00	0.00	0.00	
1,200.0	0.00	0.00	1,200.0	0.0	0.0	0.0	0.00	0.00	0.00	
1,300.0	0.00	0.00	1,300.0	0.0	0.0	0.0	0.00	0.00	0.00	
1,400.0	0.00	0.00	1,400.0	0.0	0.0	0.0	0.00	0.00	0.00	

# Concho Resources LLC

## Survey Report

<b>Company:</b>	NDB WEST	<b>Local Co-ordinate Reference:</b>	Well MOMBA FED COM 701H
<b>Project:</b>	EDDY COUNTY, NM	<b>TVD Reference:</b>	KB=26' @ 2934.0usft (McVAY 8)
<b>Site:</b>	TATER SALAD & MOMBA FED COM	<b>MD Reference:</b>	KB=26' @ 2934.0usft (McVAY 8)
<b>Well:</b>	MOMBA FED COM 701H	<b>North Reference:</b>	Grid
<b>Wellbore:</b>	OWB	<b>Survey Calculation Method:</b>	Minimum Curvature
<b>Design:</b>	PWP1	<b>Database:</b>	edm

### Planned Survey

Measured Depth (usft)	Inclination (°)	Azimuth (°)	Vertical Depth (usft)	+N/-S (usft)	+E/-W (usft)	Vertical Section (usft)	Dogleg Rate (°/100usft)	Build Rate (°/100usft)	Turn Rate (°/100usft)
1,500.0	0.00	0.00	1,500.0	0.0	0.0	0.0	0.00	0.00	0.00
1,600.0	0.00	0.00	1,600.0	0.0	0.0	0.0	0.00	0.00	0.00
1,700.0	0.00	0.00	1,700.0	0.0	0.0	0.0	0.00	0.00	0.00
1,800.0	0.00	0.00	1,800.0	0.0	0.0	0.0	0.00	0.00	0.00
1,900.0	0.00	0.00	1,900.0	0.0	0.0	0.0	0.00	0.00	0.00
2,000.0	0.00	0.00	2,000.0	0.0	0.0	0.0	0.00	0.00	0.00
2,100.0	0.00	0.00	2,100.0	0.0	0.0	0.0	0.00	0.00	0.00
2,200.0	0.00	0.00	2,200.0	0.0	0.0	0.0	0.00	0.00	0.00
2,300.0	0.00	0.00	2,300.0	0.0	0.0	0.0	0.00	0.00	0.00
2,400.0	0.00	0.00	2,400.0	0.0	0.0	0.0	0.00	0.00	0.00
2,500.0	0.00	0.00	2,500.0	0.0	0.0	0.0	0.00	0.00	0.00
<b>Start Build 2.00</b>									
2,600.0	2.00	100.00	2,600.0	-0.3	1.7	0.5	2.00	2.00	0.00
2,700.0	4.00	100.00	2,699.8	-1.2	6.9	1.8	2.00	2.00	0.00
2,800.0	6.00	100.00	2,799.5	-2.7	15.5	4.1	2.00	2.00	0.00
2,850.0	7.00	100.00	2,849.1	-3.7	21.0	5.5	2.00	2.00	0.00
<b>Start 6441.1 hold at 2850.0 MD</b>									
2,900.0	7.00	100.00	2,898.8	-4.8	27.0	7.1	0.00	0.00	0.00
3,000.0	7.00	100.00	2,998.0	-6.9	39.0	10.2	0.00	0.00	0.00
3,100.0	7.00	100.00	3,097.3	-9.0	51.0	13.4	0.00	0.00	0.00
3,200.0	7.00	100.00	3,196.5	-11.1	63.0	16.5	0.00	0.00	0.00
3,300.0	7.00	100.00	3,295.8	-13.2	75.0	19.7	0.00	0.00	0.00
3,400.0	7.00	100.00	3,395.0	-15.3	87.0	22.8	0.00	0.00	0.00
3,500.0	7.00	100.00	3,494.3	-17.5	99.0	26.0	0.00	0.00	0.00
3,600.0	7.00	100.00	3,593.5	-19.6	111.0	29.1	0.00	0.00	0.00
3,700.0	7.00	100.00	3,692.8	-21.7	123.0	32.3	0.00	0.00	0.00
3,800.0	7.00	100.00	3,792.0	-23.8	135.0	35.4	0.00	0.00	0.00
3,900.0	7.00	100.00	3,891.3	-25.9	147.0	38.6	0.00	0.00	0.00
4,000.0	7.00	100.00	3,990.6	-28.0	159.0	41.7	0.00	0.00	0.00
4,100.0	7.00	100.00	4,089.8	-30.2	171.1	44.9	0.00	0.00	0.00
4,200.0	7.00	100.00	4,189.1	-32.3	183.1	48.0	0.00	0.00	0.00
4,300.0	7.00	100.00	4,288.3	-34.4	195.1	51.2	0.00	0.00	0.00
4,400.0	7.00	100.00	4,387.6	-36.5	207.1	54.3	0.00	0.00	0.00
4,500.0	7.00	100.00	4,486.8	-38.6	219.1	57.5	0.00	0.00	0.00
4,600.0	7.00	100.00	4,586.1	-40.7	231.1	60.6	0.00	0.00	0.00
4,700.0	7.00	100.00	4,685.3	-42.9	243.1	63.7	0.00	0.00	0.00
4,800.0	7.00	100.00	4,784.6	-45.0	255.1	66.9	0.00	0.00	0.00
4,900.0	7.00	100.00	4,883.8	-47.1	267.1	70.0	0.00	0.00	0.00
5,000.0	7.00	100.00	4,983.1	-49.2	279.1	73.2	0.00	0.00	0.00
5,100.0	7.00	100.00	5,082.4	-51.3	291.1	76.3	0.00	0.00	0.00
5,200.0	7.00	100.00	5,181.6	-53.4	303.1	79.5	0.00	0.00	0.00
5,300.0	7.00	100.00	5,280.9	-55.6	315.1	82.6	0.00	0.00	0.00
5,400.0	7.00	100.00	5,380.1	-57.7	327.1	85.8	0.00	0.00	0.00

# Concho Resources LLC

## Survey Report

<b>Company:</b>	NDB WEST	<b>Local Co-ordinate Reference:</b>	Well MOMBA FED COM 701H
<b>Project:</b>	EDDY COUNTY, NM	<b>TVD Reference:</b>	KB=26' @ 2934.0usft (McVAY 8)
<b>Site:</b>	TATER SALAD & MOMBA FED COM	<b>MD Reference:</b>	KB=26' @ 2934.0usft (McVAY 8)
<b>Well:</b>	MOMBA FED COM 701H	<b>North Reference:</b>	Grid
<b>Wellbore:</b>	OWB	<b>Survey Calculation Method:</b>	Minimum Curvature
<b>Design:</b>	PWP1	<b>Database:</b>	edm

### Planned Survey

Measured Depth (usft)	Inclination (°)	Azimuth (°)	Vertical Depth (usft)	+N/-S (usft)	+E/-W (usft)	Vertical Section (usft)	Dogleg Rate (°/100usft)	Build Rate (°/100usft)	Turn Rate (°/100usft)
5,500.0	7.00	100.00	5,479.4	-59.8	339.1	88.9	0.00	0.00	0.00
5,600.0	7.00	100.00	5,578.6	-61.9	351.1	92.1	0.00	0.00	0.00
5,700.0	7.00	100.00	5,677.9	-64.0	363.1	95.2	0.00	0.00	0.00
5,800.0	7.00	100.00	5,777.1	-66.1	375.1	98.4	0.00	0.00	0.00
5,900.0	7.00	100.00	5,876.4	-68.3	387.1	101.5	0.00	0.00	0.00
6,000.0	7.00	100.00	5,975.7	-70.4	399.1	104.7	0.00	0.00	0.00
6,100.0	7.00	100.00	6,074.9	-72.5	411.1	107.8	0.00	0.00	0.00
6,200.0	7.00	100.00	6,174.2	-74.6	423.1	111.0	0.00	0.00	0.00
6,300.0	7.00	100.00	6,273.4	-76.7	435.1	114.1	0.00	0.00	0.00
6,400.0	7.00	100.00	6,372.7	-78.8	447.1	117.3	0.00	0.00	0.00
6,500.0	7.00	100.00	6,471.9	-81.0	459.1	120.4	0.00	0.00	0.00
6,600.0	7.00	100.00	6,571.2	-83.1	471.1	123.6	0.00	0.00	0.00
6,700.0	7.00	100.00	6,670.4	-85.2	483.1	126.7	0.00	0.00	0.00
6,800.0	7.00	100.00	6,769.7	-87.3	495.1	129.8	0.00	0.00	0.00
6,900.0	7.00	100.00	6,868.9	-89.4	507.1	133.0	0.00	0.00	0.00
7,000.0	7.00	100.00	6,968.2	-91.5	519.1	136.1	0.00	0.00	0.00
7,100.0	7.00	100.00	7,067.5	-93.6	531.1	139.3	0.00	0.00	0.00
7,200.0	7.00	100.00	7,166.7	-95.8	543.1	142.4	0.00	0.00	0.00
7,300.0	7.00	100.00	7,266.0	-97.9	555.1	145.6	0.00	0.00	0.00
7,400.0	7.00	100.00	7,365.2	-100.0	567.1	148.7	0.00	0.00	0.00
7,500.0	7.00	100.00	7,464.5	-102.1	579.1	151.9	0.00	0.00	0.00
7,600.0	7.00	100.00	7,563.7	-104.2	591.1	155.0	0.00	0.00	0.00
7,700.0	7.00	100.00	7,663.0	-106.3	603.1	158.2	0.00	0.00	0.00
7,800.0	7.00	100.00	7,762.2	-108.5	615.1	161.3	0.00	0.00	0.00
7,900.0	7.00	100.00	7,861.5	-110.6	627.1	164.5	0.00	0.00	0.00
8,000.0	7.00	100.00	7,960.7	-112.7	639.1	167.6	0.00	0.00	0.00
8,100.0	7.00	100.00	8,060.0	-114.8	651.1	170.8	0.00	0.00	0.00
8,200.0	7.00	100.00	8,159.3	-116.9	663.1	173.9	0.00	0.00	0.00
8,300.0	7.00	100.00	8,258.5	-119.0	675.1	177.1	0.00	0.00	0.00
8,400.0	7.00	100.00	8,357.8	-121.2	687.1	180.2	0.00	0.00	0.00
8,500.0	7.00	100.00	8,457.0	-123.3	699.1	183.4	0.00	0.00	0.00
8,600.0	7.00	100.00	8,556.3	-125.4	711.1	186.5	0.00	0.00	0.00
8,700.0	7.00	100.00	8,655.5	-127.5	723.1	189.7	0.00	0.00	0.00
8,800.0	7.00	100.00	8,754.8	-129.6	735.1	192.8	0.00	0.00	0.00
8,900.0	7.00	100.00	8,854.0	-131.7	747.1	195.9	0.00	0.00	0.00
9,000.0	7.00	100.00	8,953.3	-133.9	759.1	199.1	0.00	0.00	0.00
9,100.0	7.00	100.00	9,052.5	-136.0	771.1	202.2	0.00	0.00	0.00
9,200.0	7.00	100.00	9,151.8	-138.1	783.1	205.4	0.00	0.00	0.00
9,291.1	7.00	100.00	9,242.2	-140.0	794.1	208.3	0.00	0.00	0.00
Start DLS 10.00 TFO 61.92									
9,300.0	7.46	106.07	9,251.0	-140.3	795.2	208.6	10.00	5.17	68.07
9,400.0	15.46	138.72	9,349.1	-152.1	810.2	221.7	10.00	8.00	32.65
9,500.0	24.93	148.29	9,442.8	-180.1	830.2	251.3	10.00	9.47	9.57
9,600.0	34.68	152.75	9,529.5	-223.5	854.3	296.6	10.00	9.76	4.46

# Concho Resources LLC

## Survey Report

<b>Company:</b>	NDB WEST	<b>Local Co-ordinate Reference:</b>	Well MOMBA FED COM 701H
<b>Project:</b>	EDDY COUNTY, NM	<b>TVD Reference:</b>	KB=26' @ 2934.0usft (McVAY 8)
<b>Site:</b>	TATER SALAD & MOMBA FED COM	<b>MD Reference:</b>	KB=26' @ 2934.0usft (McVAY 8)
<b>Well:</b>	MOMBA FED COM 701H	<b>North Reference:</b>	Grid
<b>Wellbore:</b>	OWB	<b>Survey Calculation Method:</b>	Minimum Curvature
<b>Design:</b>	PWP1	<b>Database:</b>	edm

### Planned Survey

Measured Depth (usft)	Inclination (°)	Azimuth (°)	Vertical Depth (usft)	+N/-S (usft)	+E/-W (usft)	Vertical Section (usft)	Dogleg Rate (°/100usft)	Build Rate (°/100usft)	Turn Rate (°/100usft)
9,700.0	44.54	155.44	9,606.5	-280.8	882.0	356.1	10.00	9.85	2.68
9,800.0	54.44	157.31	9,671.3	-350.4	912.3	428.1	10.00	9.90	1.88
9,900.0	64.36	158.77	9,722.2	-430.1	944.4	510.3	10.00	9.92	1.46
10,000.0	74.29	160.00	9,757.4	-517.6	977.3	600.3	10.00	9.93	1.23
10,100.0	84.23	161.12	9,776.1	-610.2	1,009.9	695.3	10.00	9.94	1.12
10,163.0	90.50	161.80	9,779.0	-669.8	1,030.0	756.5	10.00	9.94	1.08
<b>Start DLS 2.00 TFO 89.92</b>									
10,200.0	90.50	162.54	9,778.6	-705.0	1,041.3	792.5	2.00	0.00	2.00
10,300.0	90.50	164.54	9,777.8	-800.9	1,069.6	890.5	2.00	0.00	2.00
10,400.0	90.50	166.54	9,776.9	-897.7	1,094.6	989.1	2.00	0.00	2.00
10,500.0	90.51	168.54	9,776.0	-995.4	1,116.1	1,088.3	2.00	0.00	2.00
10,600.0	90.51	170.54	9,775.1	-1,093.7	1,134.3	1,187.8	2.00	0.00	2.00
10,700.0	90.51	172.54	9,774.2	-1,192.6	1,149.0	1,287.6	2.00	0.00	2.00
10,800.0	90.51	174.54	9,773.3	-1,292.0	1,160.3	1,387.6	2.00	0.00	2.00
10,900.0	90.50	176.54	9,772.5	-1,391.6	1,168.0	1,487.6	2.00	0.00	2.00
11,000.0	90.50	178.54	9,771.6	-1,491.5	1,172.3	1,587.5	2.00	0.00	2.00
11,065.3	90.50	179.85	9,771.0	-1,556.8	1,173.2	1,652.6	2.00	0.00	2.00
<b>Start 3999.4 hold at 11065.3 MD</b>									
11,100.0	90.50	179.85	9,770.7	-1,591.5	1,173.3	1,687.2	0.00	0.00	0.00
11,200.0	90.50	179.85	9,769.8	-1,691.5	1,173.6	1,786.8	0.00	0.00	0.00
11,300.0	90.50	179.85	9,769.0	-1,791.5	1,173.9	1,886.4	0.00	0.00	0.00
11,400.0	90.50	179.85	9,768.1	-1,891.5	1,174.1	1,986.1	0.00	0.00	0.00
11,500.0	90.50	179.85	9,767.2	-1,991.5	1,174.4	2,085.7	0.00	0.00	0.00
11,600.0	90.50	179.85	9,766.3	-2,091.5	1,174.7	2,185.4	0.00	0.00	0.00
11,700.0	90.50	179.85	9,765.5	-2,191.5	1,175.0	2,285.0	0.00	0.00	0.00
11,800.0	90.50	179.85	9,764.6	-2,291.5	1,175.2	2,384.7	0.00	0.00	0.00
11,900.0	90.50	179.85	9,763.7	-2,391.5	1,175.5	2,484.3	0.00	0.00	0.00
12,000.0	90.50	179.85	9,762.9	-2,491.5	1,175.8	2,583.9	0.00	0.00	0.00
12,100.0	90.50	179.85	9,762.0	-2,591.5	1,176.0	2,683.6	0.00	0.00	0.00
12,200.0	90.50	179.85	9,761.1	-2,691.5	1,176.3	2,783.2	0.00	0.00	0.00
12,300.0	90.50	179.85	9,760.2	-2,791.5	1,176.6	2,882.9	0.00	0.00	0.00
12,400.0	90.50	179.85	9,759.4	-2,891.5	1,176.8	2,982.5	0.00	0.00	0.00
12,500.0	90.50	179.85	9,758.5	-2,991.5	1,177.1	3,082.2	0.00	0.00	0.00
12,600.0	90.50	179.85	9,757.6	-3,091.5	1,177.4	3,181.8	0.00	0.00	0.00
12,700.0	90.50	179.85	9,756.7	-3,191.5	1,177.7	3,281.5	0.00	0.00	0.00
12,800.0	90.50	179.85	9,755.9	-3,291.5	1,177.9	3,381.1	0.00	0.00	0.00
12,900.0	90.50	179.85	9,755.0	-3,391.5	1,178.2	3,480.7	0.00	0.00	0.00
13,000.0	90.50	179.85	9,754.1	-3,491.4	1,178.5	3,580.4	0.00	0.00	0.00
13,100.0	90.50	179.85	9,753.3	-3,591.4	1,178.7	3,680.0	0.00	0.00	0.00
13,200.0	90.50	179.85	9,752.4	-3,691.4	1,179.0	3,779.7	0.00	0.00	0.00
13,300.0	90.50	179.85	9,751.5	-3,791.4	1,179.3	3,879.3	0.00	0.00	0.00
13,400.0	90.50	179.85	9,750.6	-3,891.4	1,179.5	3,979.0	0.00	0.00	0.00
13,500.0	90.50	179.85	9,749.8	-3,991.4	1,179.8	4,078.6	0.00	0.00	0.00

# Concho Resources LLC

## Survey Report

<b>Company:</b>	NDB WEST	<b>Local Co-ordinate Reference:</b>	Well MOMBA FED COM 701H
<b>Project:</b>	EDDY COUNTY, NM	<b>TVD Reference:</b>	KB=26' @ 2934.0usft (McVAY 8)
<b>Site:</b>	TATER SALAD & MOMBA FED COM	<b>MD Reference:</b>	KB=26' @ 2934.0usft (McVAY 8)
<b>Well:</b>	MOMBA FED COM 701H	<b>North Reference:</b>	Grid
<b>Wellbore:</b>	OWB	<b>Survey Calculation Method:</b>	Minimum Curvature
<b>Design:</b>	PWP1	<b>Database:</b>	edm

### Planned Survey

Measured Depth (usft)	Inclination (°)	Azimuth (°)	Vertical Depth (usft)	+N/-S (usft)	+E/-W (usft)	Vertical Section (usft)	Dogleg Rate (°/100usft)	Build Rate (°/100usft)	Turn Rate (°/100usft)
13,600.0	90.50	179.85	9,748.9	-4,091.4	1,180.1	4,178.2	0.00	0.00	0.00
13,700.0	90.50	179.85	9,748.0	-4,191.4	1,180.3	4,277.9	0.00	0.00	0.00
13,800.0	90.50	179.85	9,747.1	-4,291.4	1,180.6	4,377.5	0.00	0.00	0.00
13,900.0	90.50	179.85	9,746.3	-4,391.4	1,180.9	4,477.2	0.00	0.00	0.00
14,000.0	90.50	179.85	9,745.4	-4,491.4	1,181.2	4,576.8	0.00	0.00	0.00
14,100.0	90.50	179.85	9,744.5	-4,591.4	1,181.4	4,676.5	0.00	0.00	0.00
14,200.0	90.50	179.85	9,743.7	-4,691.4	1,181.7	4,776.1	0.00	0.00	0.00
14,300.0	90.50	179.85	9,742.8	-4,791.4	1,182.0	4,875.8	0.00	0.00	0.00
14,400.0	90.50	179.85	9,741.9	-4,891.4	1,182.2	4,975.4	0.00	0.00	0.00
14,500.0	90.50	179.85	9,741.0	-4,991.4	1,182.5	5,075.0	0.00	0.00	0.00
14,600.0	90.50	179.85	9,740.2	-5,091.4	1,182.8	5,174.7	0.00	0.00	0.00
14,700.0	90.50	179.85	9,739.3	-5,191.4	1,183.0	5,274.3	0.00	0.00	0.00
14,800.0	90.50	179.85	9,738.4	-5,291.4	1,183.3	5,374.0	0.00	0.00	0.00
14,900.0	90.50	179.85	9,737.5	-5,391.4	1,183.6	5,473.6	0.00	0.00	0.00
15,000.0	90.50	179.85	9,736.7	-5,491.4	1,183.8	5,573.3	0.00	0.00	0.00
15,064.7	90.50	179.85	9,736.1	-5,556.0	1,184.0	5,637.7	0.00	0.00	0.00
<b>Start Turn 2.00</b>									
15,090.0	90.50	180.35	9,735.9	-5,581.4	1,184.0	5,663.0	2.00	0.00	2.00
<b>Start 3076.8 hold at 15090.0 MD</b>									
15,100.0	90.50	180.35	9,735.8	-5,591.4	1,183.9	5,672.9	0.00	0.00	0.00
15,200.0	90.50	180.35	9,734.9	-5,691.4	1,183.3	5,772.4	0.00	0.00	0.00
15,300.0	90.50	180.35	9,734.1	-5,791.3	1,182.7	5,872.0	0.00	0.00	0.00
15,400.0	90.50	180.35	9,733.2	-5,891.3	1,182.1	5,971.6	0.00	0.00	0.00
15,500.0	90.50	180.35	9,732.3	-5,991.3	1,181.4	6,071.1	0.00	0.00	0.00
15,600.0	90.50	180.35	9,731.4	-6,091.3	1,180.8	6,170.7	0.00	0.00	0.00
15,700.0	90.50	180.35	9,730.6	-6,191.3	1,180.2	6,270.3	0.00	0.00	0.00
15,800.0	90.50	180.35	9,729.7	-6,291.3	1,179.6	6,369.8	0.00	0.00	0.00
15,900.0	90.50	180.35	9,728.8	-6,391.3	1,179.0	6,469.4	0.00	0.00	0.00
16,000.0	90.50	180.35	9,727.9	-6,491.3	1,178.4	6,569.0	0.00	0.00	0.00
16,100.0	90.50	180.35	9,727.1	-6,591.3	1,177.7	6,668.5	0.00	0.00	0.00
16,200.0	90.50	180.35	9,726.2	-6,691.3	1,177.1	6,768.1	0.00	0.00	0.00
16,300.0	90.50	180.35	9,725.3	-6,791.3	1,176.5	6,867.7	0.00	0.00	0.00
16,400.0	90.50	180.35	9,724.5	-6,891.3	1,175.9	6,967.2	0.00	0.00	0.00
16,500.0	90.50	180.35	9,723.6	-6,991.3	1,175.3	7,066.8	0.00	0.00	0.00
16,600.0	90.50	180.35	9,722.7	-7,091.3	1,174.7	7,166.4	0.00	0.00	0.00
16,700.0	90.50	180.35	9,721.8	-7,191.3	1,174.0	7,265.9	0.00	0.00	0.00
16,800.0	90.50	180.35	9,721.0	-7,291.3	1,173.4	7,365.5	0.00	0.00	0.00
16,900.0	90.50	180.35	9,720.1	-7,391.3	1,172.8	7,465.1	0.00	0.00	0.00
17,000.0	90.50	180.35	9,719.2	-7,491.3	1,172.2	7,564.6	0.00	0.00	0.00
17,100.0	90.50	180.35	9,718.3	-7,591.2	1,171.6	7,664.2	0.00	0.00	0.00
17,200.0	90.50	180.35	9,717.5	-7,691.2	1,171.0	7,763.8	0.00	0.00	0.00
17,300.0	90.50	180.35	9,716.6	-7,791.2	1,170.3	7,863.3	0.00	0.00	0.00
17,400.0	90.50	180.35	9,715.7	-7,891.2	1,169.7	7,962.9	0.00	0.00	0.00
17,500.0	90.50	180.35	9,714.9	-7,991.2	1,169.1	8,062.4	0.00	0.00	0.00

# Concho Resources LLC

## Survey Report

<b>Company:</b>	NDB WEST	<b>Local Co-ordinate Reference:</b>	Well MOMBA FED COM 701H
<b>Project:</b>	EDDY COUNTY, NM	<b>TVD Reference:</b>	KB=26' @ 2934.0usft (McVAY 8)
<b>Site:</b>	TATER SALAD & MOMBA FED COM	<b>MD Reference:</b>	KB=26' @ 2934.0usft (McVAY 8)
<b>Well:</b>	MOMBA FED COM 701H	<b>North Reference:</b>	Grid
<b>Wellbore:</b>	OWB	<b>Survey Calculation Method:</b>	Minimum Curvature
<b>Design:</b>	PWP1	<b>Database:</b>	edm

### Planned Survey

Measured Depth (usft)	Inclination (°)	Azimuth (°)	Vertical Depth (usft)	+N/-S (usft)	+E/-W (usft)	Vertical Section (usft)	Dogleg Rate (°/100usft)	Build Rate (°/100usft)	Turn Rate (°/100usft)
17,600.0	90.50	180.35	9,714.0	-8,091.2	1,168.5	8,162.0	0.00	0.00	0.00
17,700.0	90.50	180.35	9,713.1	-8,191.2	1,167.9	8,261.6	0.00	0.00	0.00
17,800.0	90.50	180.35	9,712.2	-8,291.2	1,167.3	8,361.1	0.00	0.00	0.00
17,900.0	90.50	180.35	9,711.4	-8,391.2	1,166.6	8,460.7	0.00	0.00	0.00
18,000.0	90.50	180.35	9,710.5	-8,491.2	1,166.0	8,560.3	0.00	0.00	0.00
18,100.0	90.50	180.35	9,709.6	-8,591.2	1,165.4	8,659.8	0.00	0.00	0.00
18,166.8	90.50	180.35	9,709.0	-8,658.0	1,165.0	8,726.4	0.00	0.00	0.00
<b>Start Turn 2.00</b>									
18,200.0	90.50	181.02	9,708.8	-8,691.2	1,164.6	8,759.4	2.00	0.00	2.00
18,292.5	90.50	182.87	9,707.9	-8,783.6	1,161.5	8,851.2	2.00	0.00	2.00
<b>Start 1968.2 hold at 18292.5 MD</b>									
18,300.0	90.50	182.87	9,707.9	-8,791.1	1,161.1	8,858.6	0.00	0.00	0.00
18,400.0	90.50	182.87	9,707.0	-8,891.0	1,156.1	8,957.7	0.00	0.00	0.00
18,500.0	90.50	182.87	9,706.1	-8,990.9	1,151.1	9,056.8	0.00	0.00	0.00
18,600.0	90.50	182.87	9,705.3	-9,090.7	1,146.1	9,155.8	0.00	0.00	0.00
18,700.0	90.50	182.87	9,704.4	-9,190.6	1,141.1	9,254.9	0.00	0.00	0.00
18,800.0	90.50	182.87	9,703.5	-9,290.5	1,136.1	9,353.9	0.00	0.00	0.00
18,900.0	90.50	182.87	9,702.6	-9,390.3	1,131.1	9,453.0	0.00	0.00	0.00
19,000.0	90.50	182.87	9,701.8	-9,490.2	1,126.1	9,552.1	0.00	0.00	0.00
19,100.0	90.50	182.87	9,700.9	-9,590.1	1,121.1	9,651.1	0.00	0.00	0.00
19,200.0	90.50	182.87	9,700.0	-9,690.0	1,116.1	9,750.2	0.00	0.00	0.00
19,300.0	90.50	182.87	9,699.2	-9,789.8	1,111.1	9,849.3	0.00	0.00	0.00
19,400.0	90.50	182.87	9,698.3	-9,889.7	1,106.1	9,948.3	0.00	0.00	0.00
19,500.0	90.50	182.87	9,697.4	-9,989.6	1,101.1	10,047.4	0.00	0.00	0.00
19,600.0	90.50	182.87	9,696.5	-10,089.4	1,096.1	10,146.4	0.00	0.00	0.00
19,700.0	90.50	182.87	9,695.7	-10,189.3	1,091.1	10,245.5	0.00	0.00	0.00
19,800.0	90.50	182.87	9,694.8	-10,289.2	1,086.1	10,344.6	0.00	0.00	0.00
19,900.0	90.50	182.87	9,693.9	-10,389.0	1,081.0	10,443.6	0.00	0.00	0.00
20,000.0	90.50	182.87	9,693.0	-10,488.9	1,076.0	10,542.7	0.00	0.00	0.00
20,100.0	90.50	182.87	9,692.2	-10,588.8	1,071.0	10,641.8	0.00	0.00	0.00
20,200.0	90.50	182.87	9,691.3	-10,688.7	1,066.0	10,740.8	0.00	0.00	0.00
20,260.8	90.50	182.87	9,690.8	-10,749.3	1,063.0	10,801.0	0.00	0.00	0.00
<b>Start DLS 2.00 TFO -90.81</b>									
20,300.0	90.49	182.08	9,690.4	-10,788.5	1,061.3	10,839.9	2.00	-0.03	-2.00
20,400.0	90.46	180.08	9,689.6	-10,888.5	1,059.4	10,939.4	2.00	-0.03	-2.00
20,499.0	90.43	178.10	9,688.8	-10,987.5	1,061.0	11,038.1	2.00	-0.03	-2.00
<b>Start 1969.8 hold at 20499.0 MD</b>									
20,500.0	90.43	178.10	9,688.8	-10,988.5	1,061.0	11,039.1	0.00	0.00	0.00
20,600.0	90.43	178.10	9,688.1	-11,088.4	1,064.3	11,139.0	0.00	0.00	0.00
20,700.0	90.43	178.10	9,687.3	-11,188.4	1,067.6	11,238.8	0.00	0.00	0.00
20,800.0	90.43	178.10	9,686.6	-11,288.3	1,070.9	11,338.7	0.00	0.00	0.00
20,900.0	90.43	178.10	9,685.8	-11,388.3	1,074.3	11,438.5	0.00	0.00	0.00
21,000.0	90.43	178.10	9,685.1	-11,488.2	1,077.6	11,538.4	0.00	0.00	0.00
21,100.0	90.43	178.10	9,684.3	-11,588.2	1,080.9	11,638.2	0.00	0.00	0.00

# Concho Resources LLC

## Survey Report

<b>Company:</b>	NDB WEST	<b>Local Co-ordinate Reference:</b>	Well MOMBA FED COM 701H
<b>Project:</b>	EDDY COUNTY, NM	<b>TVD Reference:</b>	KB=26' @ 2934.0usft (McVAY 8)
<b>Site:</b>	TATER SALAD & MOMBA FED COM	<b>MD Reference:</b>	KB=26' @ 2934.0usft (McVAY 8)
<b>Well:</b>	MOMBA FED COM 701H	<b>North Reference:</b>	Grid
<b>Wellbore:</b>	OWB	<b>Survey Calculation Method:</b>	Minimum Curvature
<b>Design:</b>	PWP1	<b>Database:</b>	edm

### Planned Survey

Measured Depth (usft)	Inclination (°)	Azimuth (°)	Vertical Depth (usft)	+N/-S (usft)	+E/-W (usft)	Vertical Section (usft)	Dogleg Rate (°/100usft)	Build Rate (°/100usft)	Turn Rate (°/100usft)
21,200.0	90.43	178.10	9,683.6	-11,688.1	1,084.2	11,738.1	0.00	0.00	0.00
21,300.0	90.43	178.10	9,682.8	-11,788.0	1,087.5	11,837.9	0.00	0.00	0.00
21,400.0	90.43	178.10	9,682.0	-11,888.0	1,090.8	11,937.8	0.00	0.00	0.00
21,500.0	90.43	178.10	9,681.3	-11,987.9	1,094.1	12,037.6	0.00	0.00	0.00
21,600.0	90.43	178.10	9,680.5	-12,087.9	1,097.4	12,137.5	0.00	0.00	0.00
21,700.0	90.43	178.10	9,679.8	-12,187.8	1,100.7	12,237.3	0.00	0.00	0.00
21,800.0	90.43	178.10	9,679.0	-12,287.7	1,104.1	12,337.2	0.00	0.00	0.00
21,900.0	90.43	178.10	9,678.3	-12,387.7	1,107.4	12,437.0	0.00	0.00	0.00
22,000.0	90.43	178.10	9,677.5	-12,487.6	1,110.7	12,536.9	0.00	0.00	0.00
22,100.0	90.43	178.10	9,676.8	-12,587.6	1,114.0	12,636.8	0.00	0.00	0.00
22,200.0	90.43	178.10	9,676.0	-12,687.5	1,117.3	12,736.6	0.00	0.00	0.00
22,300.0	90.43	178.10	9,675.3	-12,787.5	1,120.6	12,836.5	0.00	0.00	0.00
22,400.0	90.43	178.10	9,674.5	-12,887.4	1,123.9	12,936.3	0.00	0.00	0.00
22,468.8	90.43	178.10	9,674.0	-12,956.2	1,126.2	13,005.1	0.00	0.00	0.00
TD at 22468.8									

### Design Targets

Target Name	Dip Angle (°)	Dip Dir. (°)	TVD (usft)	+N/-S (usft)	+E/-W (usft)	Northing (usft)	Easting (usft)	Latitude	Longitude
LTP (MOMBA FED C) - hit/miss target - Shape - Point	0.00	0.00	9,674.0	-12,826.2	1,126.6	364,166.00	593,100.20	32° 0' 3.061 N	104° 1' 58.810 W
- plan misses target center by 4.8usft at 22338.9usft MD (9675.0 TVD, -12826.4 N, 1121.9 E)									
PBHL (MOMBA FED C) - plan hits target center - Point	0.00	0.15	9,674.0	-12,956.2	1,126.2	364,036.00	593,099.80	32° 0' 1.775 N	104° 1' 58.819 W
Tgt3 (MOMBA FED C) - plan hits target center - Point	0.00	0.00	9,690.8	-10,749.3	1,063.0	366,242.85	593,036.60	32° 0' 23.617 N	104° 1' 59.482 W
Tgt2 (MOMBA FED C) - plan hits target center - Point	0.00	0.00	9,709.0	-8,658.0	1,165.0	368,334.20	593,138.60	32° 0' 44.311 N	104° 1' 58.230 W
Tgt1 (MOMBA FED C) - plan hits target center - Point	0.00	0.00	9,736.1	-5,556.0	1,184.0	371,436.17	593,157.63	32° 1' 15.010 N	104° 1' 57.908 W
FTP (MOMBA FED C) - plan misses target center by 247.2usft at 9900.0usft MD (9722.2 TVD, -430.1 N, 944.4 E) - Circle (radius 50.0)	0.00	0.00	9,779.0	-322.7	1,159.7	376,669.50	593,133.30	32° 2' 6.802 N	104° 1' 58.022 W

# Concho Resources LLC

## Survey Report

<b>Company:</b>	NDB WEST	<b>Local Co-ordinate Reference:</b>	Well MOMBA FED COM 701H
<b>Project:</b>	EDDY COUNTY, NM	<b>TVD Reference:</b>	KB=26' @ 2934.0usft (McVAY 8)
<b>Site:</b>	TATER SALAD & MOMBA FED COM	<b>MD Reference:</b>	KB=26' @ 2934.0usft (McVAY 8)
<b>Well:</b>	MOMBA FED COM 701H	<b>North Reference:</b>	Grid
<b>Wellbore:</b>	OWB	<b>Survey Calculation Method:</b>	Minimum Curvature
<b>Design:</b>	PWP1	<b>Database:</b>	edm

### Plan Annotations

Measured Depth (usft)	Vertical Depth (usft)	Local Coordinates		Comment
		+N/-S (usft)	+E/-W (usft)	
2500	2500	0	0	Start Build 2.00
2850	2849	-4	21	Start 6441.1 hold at 2850.0 MD
9291	9242	-140	794	Start DLS 10.00 TFO 61.92
10,163	9779	-670	1030	Start DLS 2.00 TFO 89.92
11,065	9771	-1557	1173	Start 3999.4 hold at 11065.3 MD
15,065	9736	-5556	1184	Start Turn 2.00
15,090	9736	-5581	1184	Start 3076.8 hold at 15090.0 MD
18,167	9709	-8658	1165	Start Turn 2.00
18,293	9708	-8784	1161	Start 1968.2 hold at 18292.5 MD
20,261	9691	-10,749	1063	Start DLS 2.00 TFO -90.81
20,499	9689	-10,988	1061	Start 1969.8 hold at 20499.0 MD
22,469	9674	-12,956	1126	TD at 22468.8

Checked By: _____	Approved By: _____	Date: _____
-------------------	--------------------	-------------



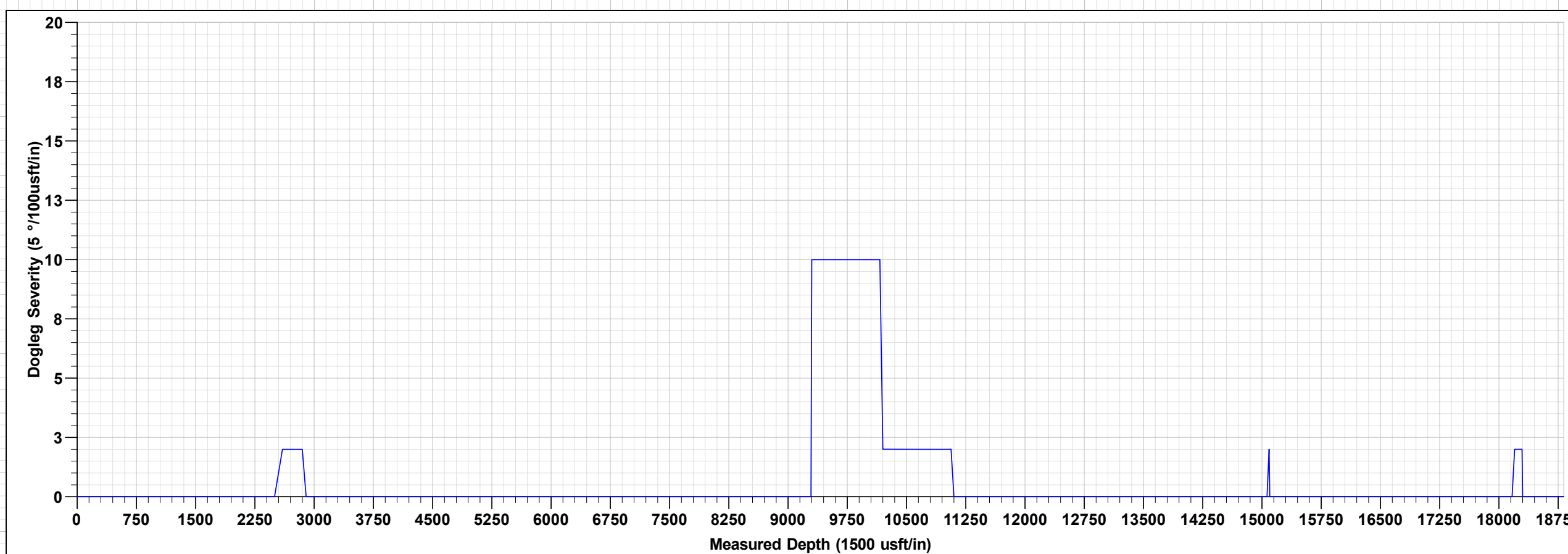
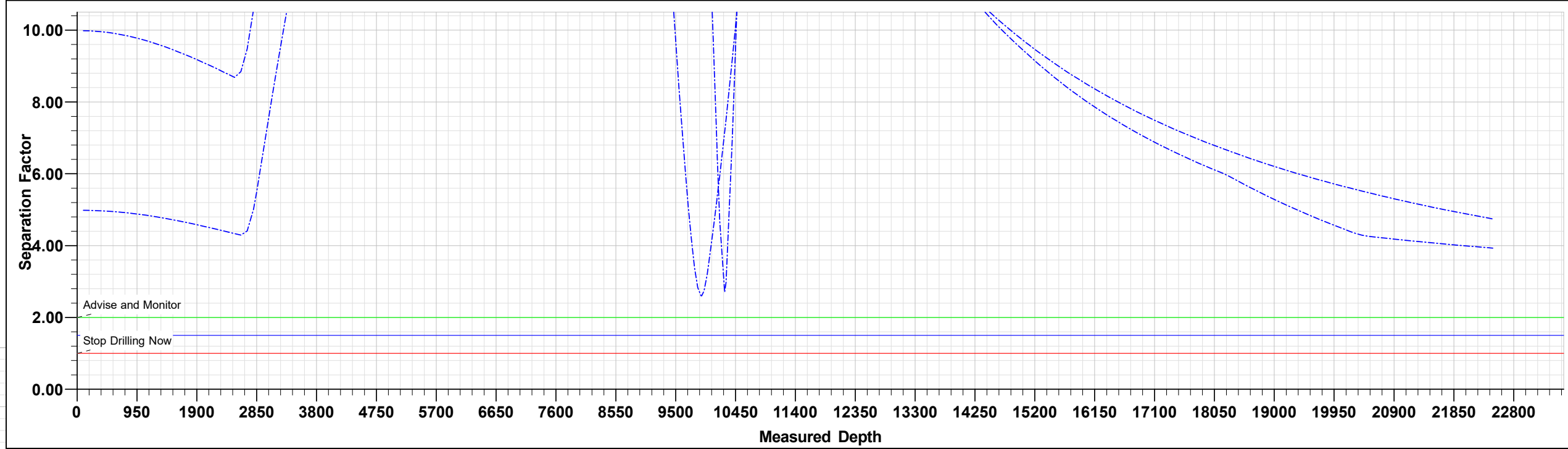
Project: EDDY COUNTY, NM  
Site: TATER SALAD & MOMBA FED COM  
Well: MOMBA FED COM 701H  
Wellbore: OWB  
Design: PWP1  
GI: 2908.6  
KB=26' @ 2934.0usft (McVAY 8)

# WELL DETAILS: MOMBA FED COM 701H

+N/-S 0.0 +E/-W 0.0 Northing 376992.20 Easting 591973.60 Latitude 32° 2' 10.028 N Longitude 104° 2' 11.484 W

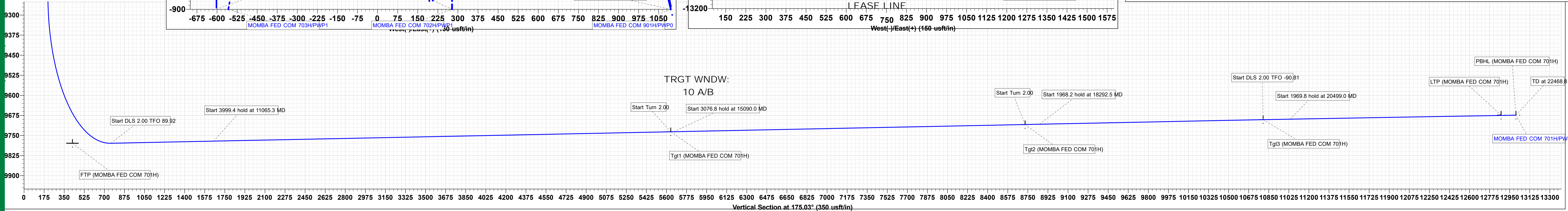
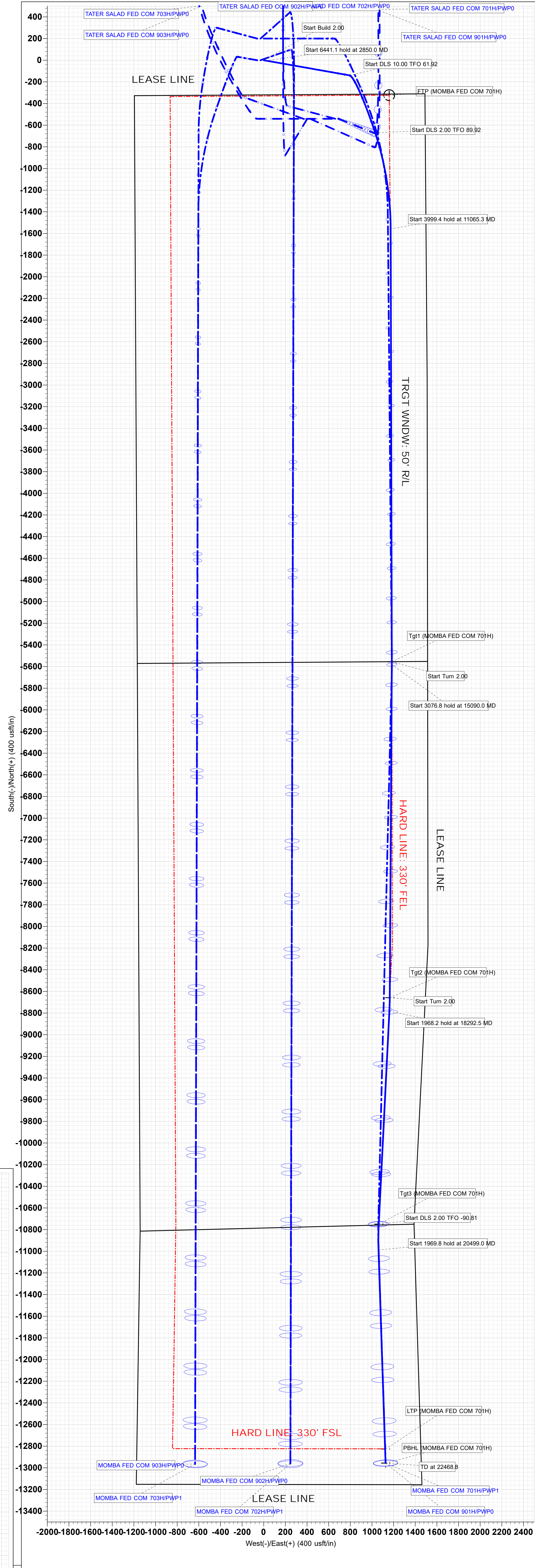
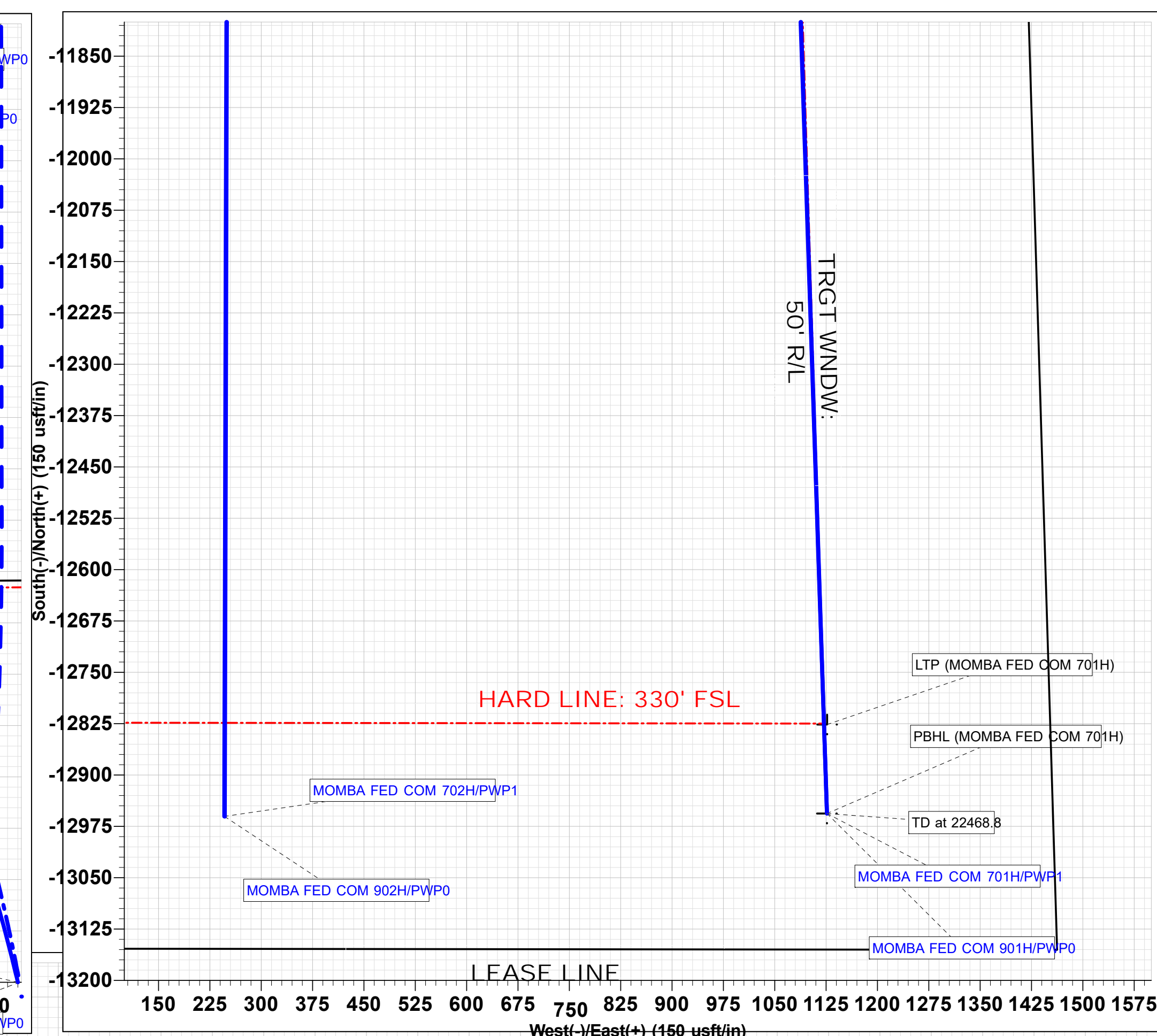
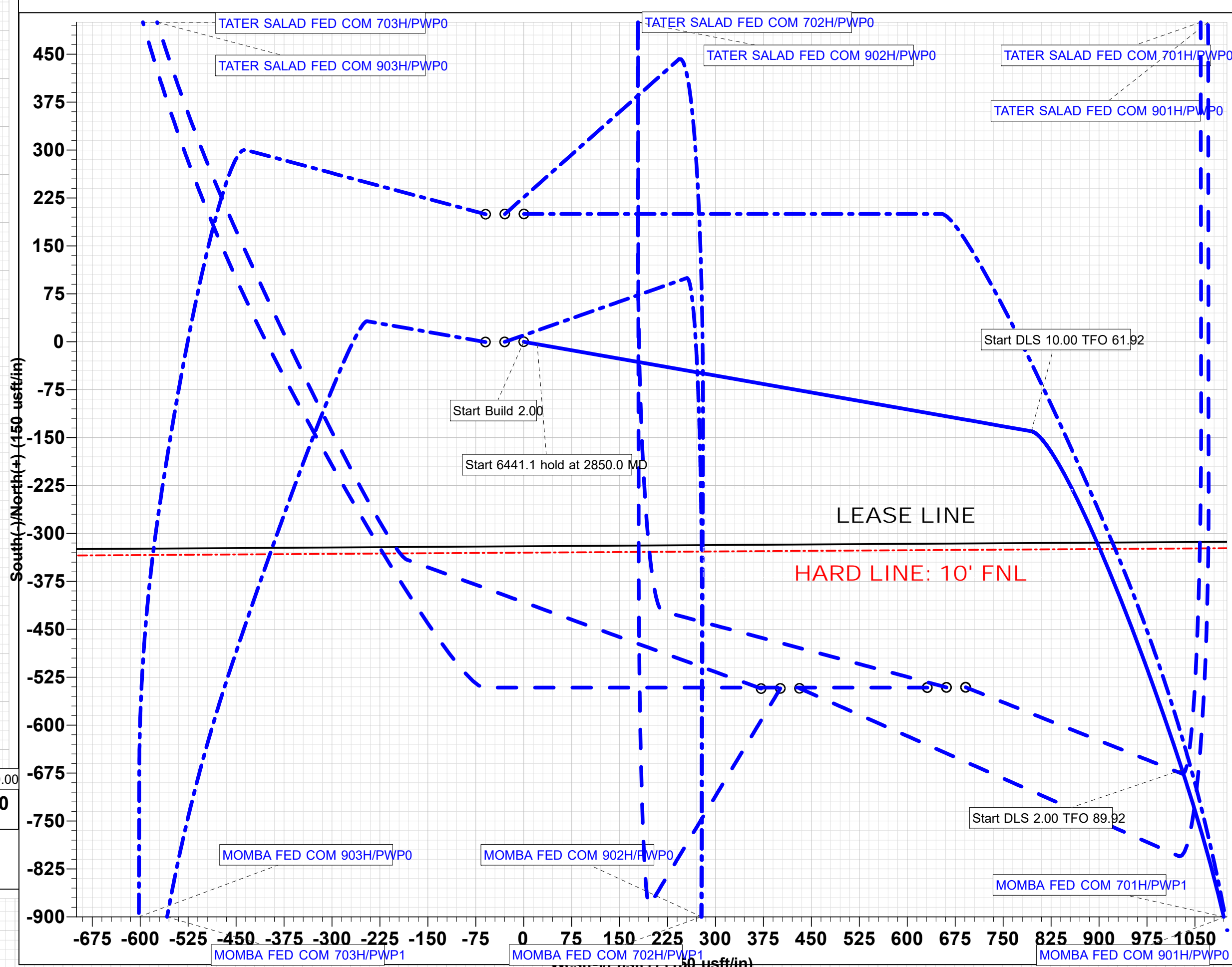
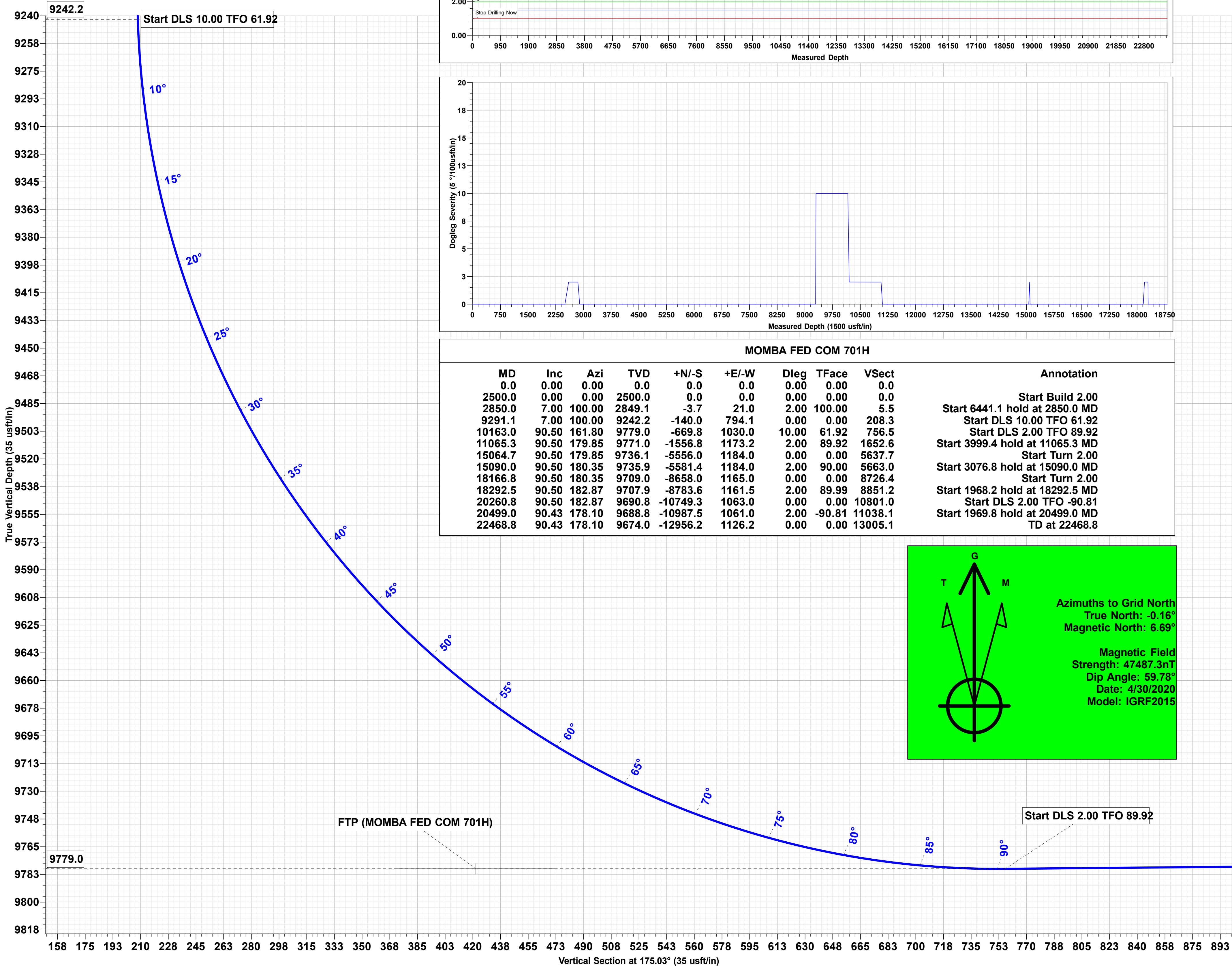
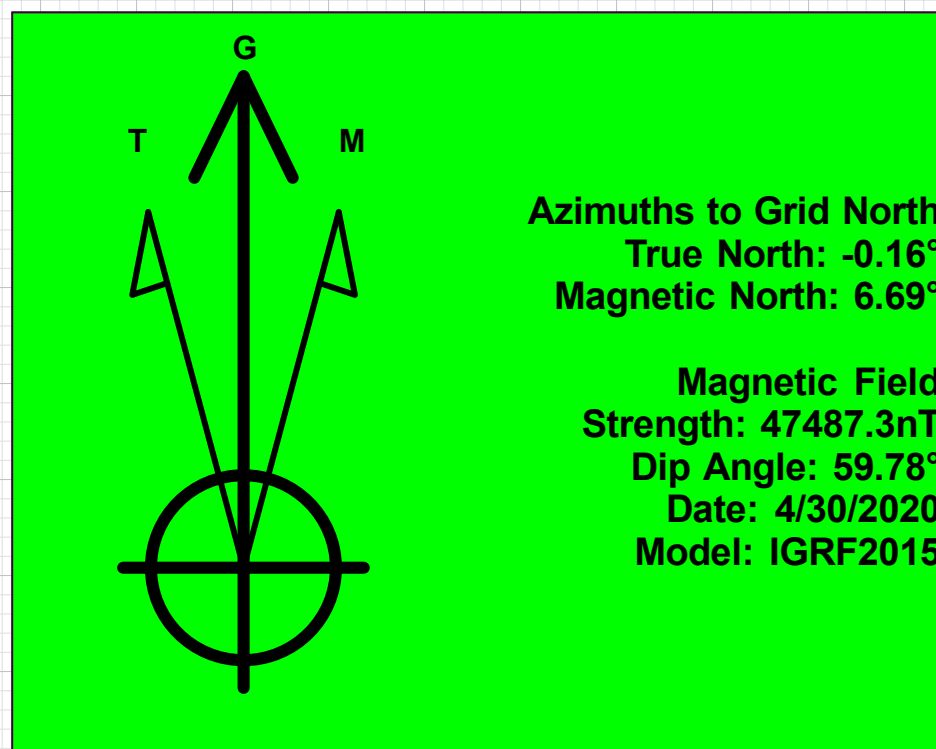
## DESIGN TARGET DETAILS

Name	TVD	+N/-S	+E/-W	Northing	Easting	Latitude	Longitude
LTP (MOMBA FED COM 701H)	9674.0	-12826.2	1126.6	364166.00	593100.20	32° 0' 3.061 N	104° 1' 58.810 W
PBHL (MOMBA FED COM 701H)	9674.0	-12956.2	1126.2	364036.00	593099.80	32° 0' 1.775 N	104° 1' 58.819 W
Tgt3 (MOMBA FED COM 701H)	9690.8	-10749.3	1063.0	366242.85	593036.60	32° 0' 23.617 N	104° 1' 59.482 W
Tgt2 (MOMBA FED COM 701H)	9709.0	-8658.0	1165.0	368334.20	593138.60	32° 0' 44.311 N	104° 1' 58.230 W
Tgt1 (MOMBA FED COM 701H)	9736.1	-5556.0	1184.0	371436.18	593157.62	32° 1' 15.010 N	104° 1' 57.908 W
FTP (MOMBA FED COM 701H)	9779.0	-322.7	1159.7	376669.50	593133.30	32° 2' 6.802 N	104° 1' 56.022 W



## MOMBA FED COM 701H

MD	Inc	Azi	TVD	+N/-S	+E/-W	Dleg	TFace	Vsect	Annotation
0.0	0.00	0.00	0.0	0.0	0.0	0.00	0.00	0.0	Start Build 2.00
2500.0	0.00	0.00	2500.0	0.0	0.0	0.00	0.00	0.0	Start 6441.1 hold at 2850.0 MD
2850.0	7.00	100.00	2849.1	-3.7	21.0	2.00	100.00	5.5	Start DLS 10.00 TFO 61.92
9291.1	7.00	100.00	9242.2	-140.0	794.1	0.00	0.00	208.3	Start DLS 2.00 TFO 89.92
10163.0	90.50	161.80	9779.0	-669.8	1030.0	10.00	61.92	756.5	Start 3999.4 hold at 11065.3 MD
11065.3	90.50	179.85	9771.0	-1556.8	1173.2	2.00	89.92	1652.6	Start Turn 2.00
15064.7	90.50	179.85	9736.1	-5556.0	1184.0	0.00	0.00	5637.7	Start 3076.8 hold at 15090.0 MD
15090.0	90.50	180.35	9735.9	-5581.4	1184.0	2.00	90.00	5663.0	Start Turn 2.00
18166.8	90.50	180.35	9709.0	-8658.0	1165.0	0.00	0.00	8726.4	Start 1968.2 hold at 18292.5 MD
18292.5	90.50	182.87	9707.9	-8783.6	1161.5	2.00	89.99	8851.2	Start DLS 2.00 TFO -90.81
20260.8	90.50	182.87	9690.8	-10749.3	1063.0	0.00	0.00	10801.0	Start 1969.8 hold at 20499.0 MD
20499.0	90.43	178.10	9688.8	-10887.5	1061.0	2.00	-90.81	11038.1	TD at 22468.8
22468.8	90.43	178.10	9674.0	-12956.2	1126.2	0.00	0.00	13005.1	



COG Operating LLC

Rig Plat & Closed Loop Equipment Diagram

Well pad will be 400' X 400'  
with cellar in center of pad

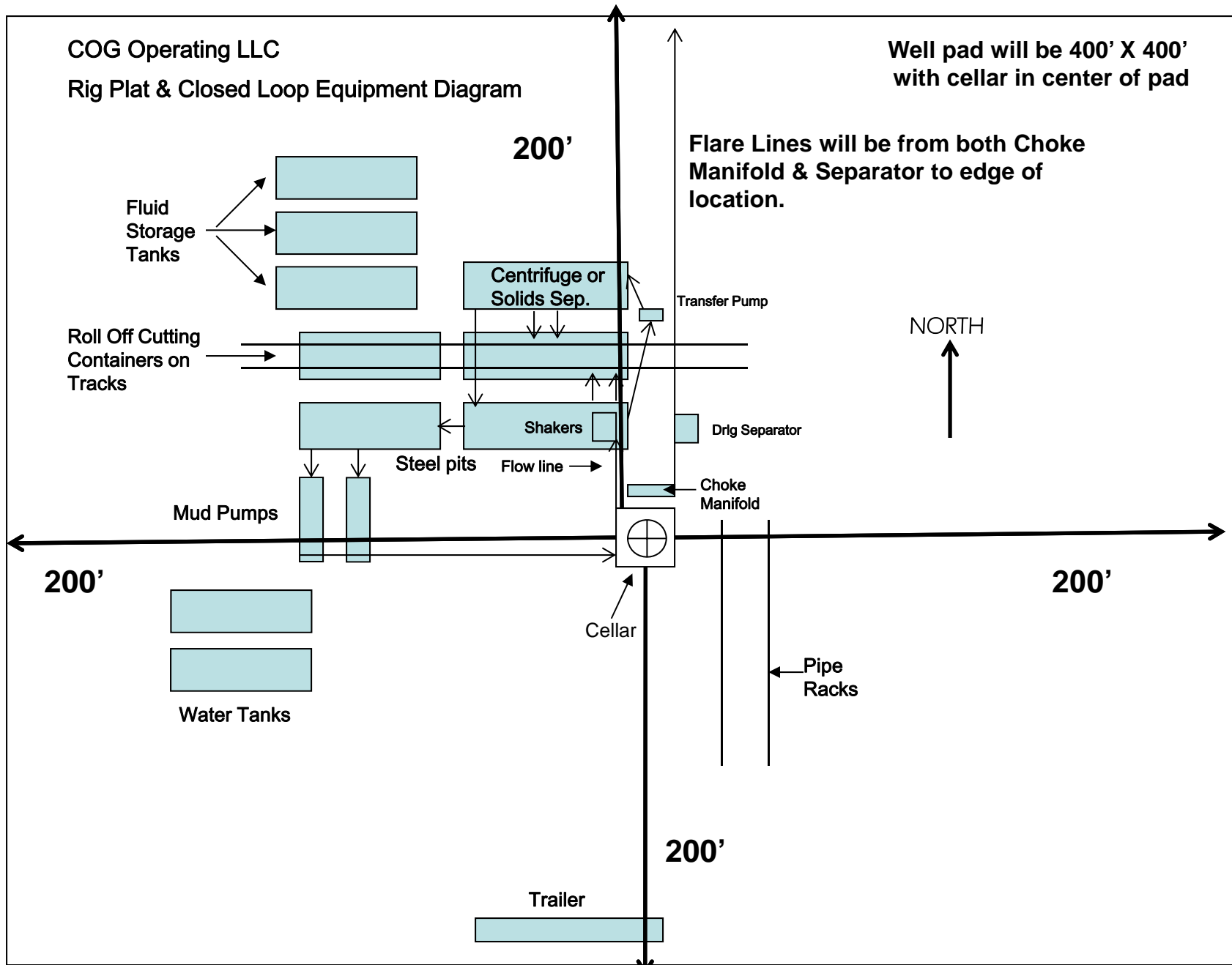


Exhibit 1

"I further certify that COG will comply with Rule 19.15.17  
NMAC by using a Closed Loop System."