

Form 3160-3  
(June 2015)FORM APPROVED  
OMB No. 1004-0137  
Expires: January 31, 2018

UNITED STATES  
DEPARTMENT OF THE INTERIOR  
BUREAU OF LAND MANAGEMENT  
**APPLICATION FOR PERMIT TO DRILL OR REENTER**

1a. Type of work: <input checked="" type="checkbox"/> DRILL <input type="checkbox"/> REENTER 1b. Type of Well: <input checked="" type="checkbox"/> Oil Well <input type="checkbox"/> Gas Well <input type="checkbox"/> Other 1c. Type of Completion: <input type="checkbox"/> Hydraulic Fracturing <input checked="" type="checkbox"/> Single Zone <input type="checkbox"/> Multiple Zone		5. Lease Serial No. <b>NMNM092757</b> 6. If Indian, Allottee or Tribe Name  7. If Unit or CA Agreement, Name and No.  8. Lease Name and Well No. <b>TOMAHAWK FEDERAL UNIT</b> <b>714H</b> 9. API Well No. <b>3001547500</b>
2. Name of Operator <b>COG OPERATING LLC</b> 3a. Address <b>600 West Illinois Ave, Midland, TX 79701</b> 3b. Phone No. (include area code) <b>(432) 683-7443</b>		10. Field and Pool, or Exploratory <b>Malaga/PURPLE SAGE WOLFCAMP GA:</b> 11. Sec., T. R. M. or Blk. and Survey or Area <b>SEC 30/T24S/R28E/NMP</b>
4. Location of Well (Report location clearly and in accordance with any State requirements. *) At surface <b>NENE / 500 FNL / 1079 FEL / LAT 32.194564 / LONG -104.1217</b> At proposed prod. zone <b>NENE / 200 FNL / 148 FEL / LAT 32.224508 / LONG -104.118764</b>		12. County or Parish <b>EDDY</b> 13. State <b>NM</b>
14. Distance in miles and direction from nearest town or post office* <b>3 miles</b>		15. Distance from proposed* location to nearest property or lease line, ft. (Also to nearest drig. unit line, if any) <b>330 feet</b> 16. No of acres in lease <b>1081.18</b> 17. Spacing Unit dedicated to this well <b>640.0</b>
18. Distance from proposed location* to nearest well, drilling, completed, applied for, on this lease, ft. <b>961 feet</b> 19. Proposed Depth <b>9374 feet / 20105 feet</b> 20. BLM/BIA Bond No. in file <b>FED: NMB000215</b>		21. Elevations (Show whether DF, KDB, RT, GL, etc.) <b>3071 feet</b> 22. Approximate date work will start* <b>08/01/2020</b> 23. Estimated duration <b>30 days</b>
24. Attachments		

The following, completed in accordance with the requirements of Onshore Oil and Gas Order No. 1, and the Hydraulic Fracturing rule per 43 CFR 3162.3-3 (as applicable)

- |   |   |
|---|---|
| 1. Well plat certified by a registered surveyor.<br>2. A Drilling Plan.<br>3. A Surface Use Plan (if the location is on National Forest System Lands, the SUPO must be filed with the appropriate Forest Service Office). | 4. Bond to cover the operations unless covered by an existing bond on file (see Item 20 above).<br>5. Operator certification.<br>6. Such other site specific information and/or plans as may be requested by the BLM. |
|---|---|

25. Signature (Electronic Submission)  Title <b>Regulatory Advisor</b>	Name (Printed/Typed) <b>STAN WAGNER / Ph: (432) 683-7443</b>	Date <b>03/31/2020</b>
Approved by (Signature) (Electronic Submission)  Title <b>Assistant Field Manager Lands &amp; Minerals</b>	Name (Printed/Typed) <b>Cody Layton / Ph: (575) 234-5959</b>  Office <b>Carlsbad Field Office</b>	Date <b>09/14/2020</b>

Application approval does not warrant or certify that the applicant holds legal or equitable title to those rights in the subject lease which would entitle the applicant to conduct operations thereon.  
 Conditions of approval, if any, are attached.

Title 18 U.S.C. Section 1001 and Title 43 U.S.C. Section 1212, make it a crime for any person knowingly and willfully to make to any department or agency of the United States any false, fictitious or fraudulent statements or representations as to any matter within its jurisdiction.

Oil base muds are not to be used until fresh water zones are cased and cemented providing isolation from the oil or diesel. This includes synthetic oils. Oil based mud, drilling fluids and solids must be contained in a steel closed loop system

- Will require a directional survey with the C-104

Once the well is spud, to prevent ground water contamination through whole or partial conduits from the surface, the operator shall drill without interruption through the fresh water zone or zones and shall immediately set in cement the water protection string

APPROVED WITH CONDITIONS

Approval Date: 09/14/2020

KP 9/24/2020 GEO Review

SL

(Continued on page 2)

\*(Instructions on page 2)  
Entered - KMS NMOC

DISTRICT I  
1625 N. FRENCH DR., HOBBS, NM 88240  
Phone: (575) 393-6181 Fax: (575) 393-0720

DISTRICT II  
611 S. FIRST ST., ARTESIA, NM 88210  
Phone: (575) 748-1283 Fax: (575) 748-9720

DISTRICT III  
1000 RIO BRAZOS RD., AZTEC, NM 87410  
Phone: (505) 334-6178 Fax: (505) 334-6170

DISTRICT IV  
1220 S. ST. FRANCIS DR., SANTA FE, NM 87505  
Phone: (505) 476-3460 Fax: (505) 476-3462

State of New Mexico  
Energy, Minerals & Natural Resources Department  
**OIL CONSERVATION DIVISION**  
1220 SOUTH ST. FRANCIS DR.  
Santa Fe, New Mexico 87505

Form C-102  
Revised August 1, 2011  
Submit one copy to appropriate  
District Office

☐ AMENDED REPORT

**WELL LOCATION AND ACREAGE DEDICATION PLAT**

API Number 30-015- <u>47500</u>	Pool Code 98220	Pool Name Purple Sage; Wolfcamp (Gas)
Property Code <u>328919</u>	Property Name TOMAHAWK FEDERAL UNIT	Well Number 714H
OGRID No. 229137	Operator Name COG OPERATING, LLC	Elevation 3071.6'

**Surface Location**

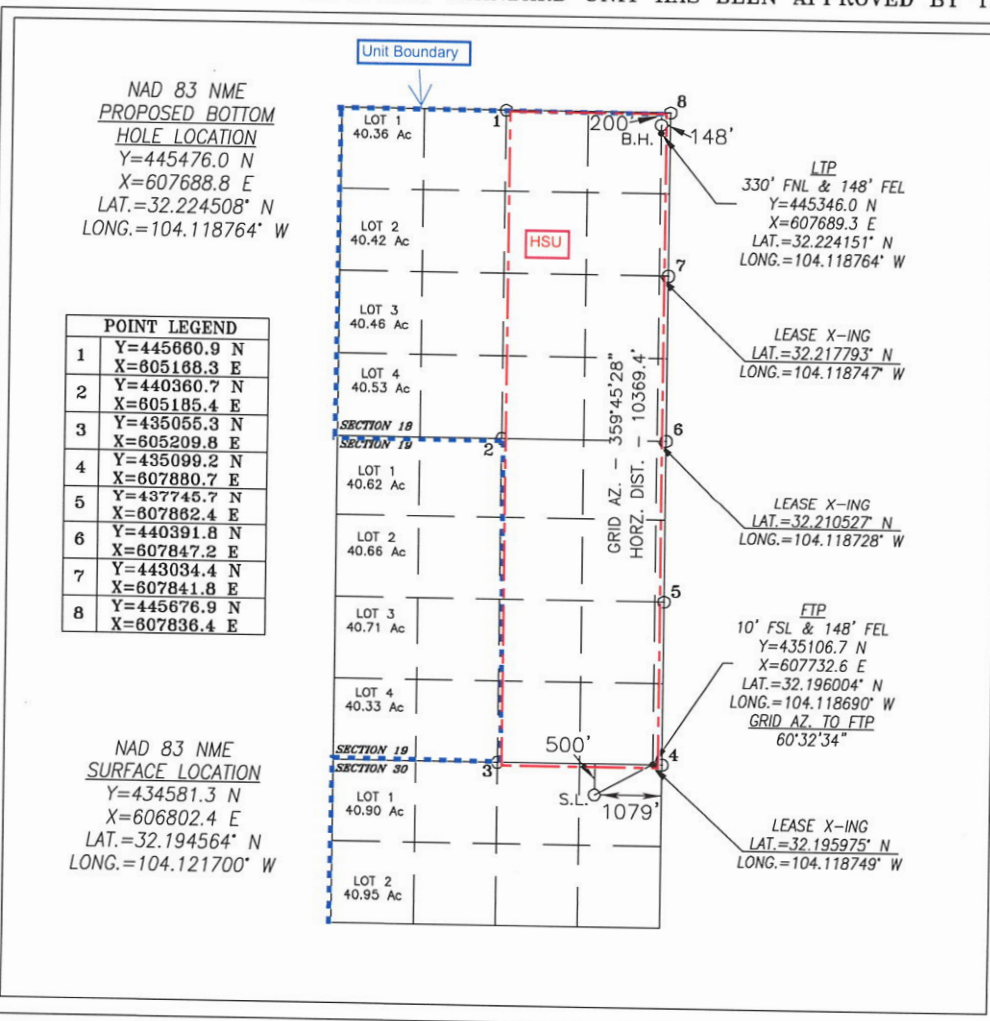
UL or lot No.	Section	Township	Range	Lot Idn	Feet from the	North/South line	Feet from the	East/West line	County
A	30	24-S	28-E		500	NORTH	1079	EAST	EDDY

**Bottom Hole Location If Different From Surface**

UL or lot No.	Section	Township	Range	Lot Idn	Feet from the	North/South line	Feet from the	East/West line	County
A	18	24-S	28-E		200	NORTH	148	EAST	EDDY

Dedicated Acres 640 HSU	Joint or Infill	Consolidation Code	Order No.
----------------------------	-----------------	--------------------	-----------

NO ALLOWABLE WILL BE ASSIGNED TO THIS COMPLETION UNTIL ALL INTERESTS HAVE BEEN CONSOLIDATED  
OR A NON-STANDARD UNIT HAS BEEN APPROVED BY THE DIVISION



**OPERATOR CERTIFICATION**

I hereby certify that the information herein is true and complete to the best of my knowledge and belief, and that this organization either owns a working interest or unleased mineral interest in the land including the proposed bottom hole location or has a right to drill this well at this location pursuant to a contract with an owner of such mineral or working interest, or to a voluntary pooling agreement or a compulsory pooling order heretofore entered by the division.

Stan Wagner 3/31/2020  
Signature Date

Stan Wagner  
Printed Name

E-mail Address

**SURVEYOR CERTIFICATION**

I hereby certify that the well location shown on this plat was plotted from field notes of actual surveys made by me or under my supervision, and that the same is true and correct to the best of my belief.

FEBRUARY 13, 2020

Date of Survey

Signature & Seal of Professional Surveyor



Chad Hargrow 2/20/20  
Certificate No. CHAD HARGROW 17777  
W.O. # 20-368R DRAWN BY: AH

Intent ☒ As Drilled ☐

API # 30-015-			
Operator Name: COG Operating LLC		Property Name: Tomahawk Federal Unit	Well Number 714H

Kick Off Point (KOP)

UL A	Section 30	Township 24S	Range 28E	Lot	Feet	From N/S	Feet	From E/W	County Eddy
Latitude					Longitude				NAD 83

First Take Point (FTP)

UL A	Section 19	Township 24S	Range 28E	Lot	Feet 10	From N/S South	Feet 148	From E/W East	County Eddy
Latitude 32.196004					Longitude -104.118690				NAD 83

Last Take Point (LTP)

UL A	Section 18	Township 24S	Range 28E	Lot	Feet 330	From N/S North	Feet 148	From E/W East	County Eddy
Latitude 32.224151					Longitude -104.118764				NAD 83

Is this well the defining well for the Horizontal Spacing Unit? ☐ No

Is this well an infill well? ☐ Yes

If infill is yes please provide API if available, Operator Name and well number for Defining well for Horizontal Spacing Unit.

API # 30-015-			
Operator Name: COG Operating LLC		Property Name: Tomahawk Federal Unit	Well Number 715H

KZ 06/29/2018

District I  
1625 N. French Dr., Hobbs, NM 88240  
District II  
811 S. First St., Artesia, NM 88210  
District III  
1000 Rio Brazos Road, Aztec, NM 87410  
District IV  
1220 S. St. Francis Dr., Santa Fe, NM 87505

State of New Mexico  
Energy, Minerals and Natural Resources Department  
Oil Conservation Division  
1220 South St. Francis Dr.  
Santa Fe, NM 87505

Submit Original  
to Appropriate  
District Office

## GAS CAPTURE PLAN

Date: 3/20/2020

☒ Original Operator & OGRID No.: COG Operating LLC, (229137)

☐ Amended - Reason for Amendment: \_\_\_\_\_

This Gas Capture Plan outlines actions to be taken by the Operator to reduce well/production facility flaring/venting for new completion (new drill, recomple to new zone, re-frac) activity.

*Note: Form C-129 must be submitted and approved prior to exceeding 60 days allowed by Rule (Subsection A of 19.15.18.12 NMAC).*

### Well(s)/Production Facility – Name of facility

The well(s) that will be located at the production facility are shown in the table below.

Well Name	API	Well Location (ULSTR)	Footages	Expected MCF/D	Flared or Vented	Comments
Tomahawk Federal Unit 711H	30-015-	C-29-24S-28E	500' FNL & 1804' FWL	±3500	None Planned	APD Submission Plan Subject to change
Tomahawk Federal Unit 712H	30-015-	C-29-24S-28E	500' FNL & 1774' FWL	±3500	None Planned	APD Submission Plan Subject to change
Tomahawk Federal Unit 713H	30-015-	C-29-24S-28E	500' FSL & 1744' FEL	±3500	None Planned	APD Submission Plan Subject to change

### Gathering System and Pipeline Notification

Well(s) will be connected to a production facility after flowback operations are complete, if gas transporter system is in place. The gas produced from production facility is dedicated to **Crestwood Midstream** and will be connected to **Willow Lake** low pressure gathering system located in **Reeves** County, Texas. **COG Operating LLC** provides (periodically) to **Crestwood Midstream** a drilling, completion and estimated first production date for wells that are scheduled to be drilled in the foreseeable future. In addition, **COG Operating LLC** and **Crestwood Midstream** have periodic conference calls to discuss changes to drilling and completion schedules. Gas from these wells will be processed at **Crestwood Midstream** Processing Plant located in Sec. **19**, Blk. **56**, Twn **2**, **Reeves** County, Texas. The actual flow of the gas will be based on compression operating parameters and gathering system pressures.

### Flowback Strategy

After the fracture treatment/completion operations, well(s) will be produced to temporary production tanks and gas will be flared or vented. During flowback, the fluids and sand content will be monitored. When the produced fluids contain minimal sand, the wells will be turned to production facilities. Gas sales should start as soon as the wells start flowing through the production facilities, unless there are operational issues on Gas Transporter system at that time. Based on current information, it is Operator's belief the system can take this gas upon completion of the well(s).

Safety requirements during cleanout operations from the use of underbalanced air cleanout systems may necessitate that sand and non-pipeline quality gas be vented and/or flared rather than sold on a temporary basis.

### Alternatives to Reduce Flaring

Below are alternatives considered from a conceptual standpoint to reduce the amount of gas flared.

- Power Generation – On lease
  - Only a portion of gas is consumed operating the generator, remainder of gas will be flared
- Compressed Natural Gas – On lease
  - Gas flared would be minimal, but might be uneconomical to operate when gas volume declines

- NGL Removal – On lease
  - Plants are expensive, residue gas is still flared, and uneconomical to operate when gas volume declines

# PECOS DISTRICT DRILLING OPERATIONS CONDITIONS OF APPROVAL

<b>OPERATOR'S NAME:</b>	<b>COG Operating LLC</b>
<b>LEASE NO.:</b>	<b>NMNM092757</b>
<b>WELL NAME &amp; NO.:</b>	<b>Tomahawk Federal Unit 714H</b>
<b>SURFACE HOLE FOOTAGE:</b>	<b>500' FNL &amp; 1079' FEL</b>
<b>BOTTOM HOLE FOOTAGE:</b>	<b>200' FNL &amp; 148' FEL</b>
<b>LOCATION:</b>	<b>Section 30, T 24S, R 28E, NMPM</b>
<b>COUNTY:</b>	<b>Eddy County, New Mexico</b>

H2S	<input type="radio"/> Yes	<input checked="" type="radio"/> No	
Potash	<input checked="" type="radio"/> None	<input type="radio"/> Secretary	<input type="radio"/> R-111-P
Cave/Karst Potential	<input type="radio"/> Low	<input checked="" type="radio"/> Medium	<input type="radio"/> High
Variance	<input type="radio"/> None	<input checked="" type="radio"/> Flex Hose	<input type="radio"/> Other
Wellhead	<input checked="" type="radio"/> Conventional	<input type="radio"/> Multibowl	<input type="radio"/> Both
Other	<input type="checkbox"/> 4 String Area	<input type="checkbox"/> Capitan Reef	<input type="checkbox"/> WIPP
Other	<input type="checkbox"/> Fluid Filled	<input type="checkbox"/> Cement Squeeze	<input type="checkbox"/> Pilot Hole
Special Requirements	<input type="checkbox"/> Water Disposal	<input type="checkbox"/> COM	<input checked="" type="checkbox"/> Unit

## A. HYDROGEN SULFIDE

- Hydrogen Sulfide (H2S) monitors shall be installed prior to drilling out the surface shoe. If H2S is detected in concentrations greater than 100 ppm, the Hydrogen Sulfide area shall meet Onshore Order 6 requirements, which includes equipment and personnel/public protection items. If Hydrogen Sulfide is encountered, provide measured values and formations to the BLM.

## B. CASING

- The **10-3/4"** surface casing shall be set a minimum of 25' above the top of the salt and cemented to surface.
  - If cement does not circulate to surface**, the appropriate BLM office shall be notified and a temperature survey utilizing an electronic type temperature survey with surface log readout will be used or a cement bond log shall be run to verify the top of the cement. Temperature survey will be run a minimum of **6 hours** after pumping cement, ideally between 8-10 hours after.
  - WOC time for a primary cement job will be a minimum of **8 hours** or **500 psi** compressive strength, whichever is greater. This is to include the lead cement.
  - If cement falls back, remedial cementing will be done prior to drilling out the shoe.
  - WOC time for a remedial job will be a minimum of 4 hours after bringing cement to surface or 500 psi compressive strength, whichever is greater.

2. The **7-5/8"** intermediate casing shall be set be cemented to surface.
  - a. **If cement does not circulate to surface**, see B.1.a, c & d.
3. The **5-1/2"** production casing shall be cemented with at least **200'** **tie-back** into the previous casing. Operator shall provide method of verification.
  - a. In Medium Cave/Karst Areas, if cement does not circulate to surface on the first two casing strings, the cement on the 3<sup>rd</sup> casing string must come to surface.

#### **C. PRESSURE CONTROL**

1. Minimum working pressure of the blowout preventer (BOP) and related equipment (BOPE) required for drilling below the surface casing shoe shall be **3000 (3M)** psi.
2. Minimum working pressure of the blowout preventer (BOP) and related equipment (BOPE) required for drilling below the intermediate casing shoe shall be **5000 (5M)** psi.

#### **D. SPECIAL REQUIREMENTS**

2. The well sign for a unit well shall include the unit number (when applied for) in addition to the surface and bottom hole lease numbers. This also applies to participating area numbers. If a participating area has not been established, the operator can use the general unit designation, but will replace the unit number with the participating area number once it has been established.
  - a. A commercial well determination shall be submit after production has been established for at least six months. Secondary recovery unit wells are exempt from this requirement.

**DR 09082020**

## **GENERAL REQUIREMENTS**

1. The BLM is to be notified in advance for a representative to witness:
  - a. Spudding the well (minimum of 24 hours)
  - b. Setting and/or Cementing of all casing strings (minimum of 4 hours)
  - c. BOP/BOPE tests (minimum of 4 hours)
    - ☒ Eddy County: Call the Carlsbad Field Office, (575) 361-2822
    - ☒ Lea County: Call the Hobbs Field Station, (575) 393-3612
2. Unless the production casing has been run and cemented or the well has been properly plugged, the drilling rig shall not be removed from over the hole without prior approval.
  - a. In the event the operator has proposed to drill multiple wells utilizing a skid/walking rig. Operator shall secure the wellbore on the current well, after installing and testing the wellhead, by installing a blind flange of like pressure rating to the wellhead and a pressure gauge that can be monitored while drilling is performed on the other well(s).
  - b. When the operator proposes to set surface casing with Spudder Rig:
    - i. Notify the BLM when moving in and removing the Spudder Rig.
    - ii. Notify the BLM when moving in the 2<sup>nd</sup> Rig. Rig to be moved in within 90 days of notification that Spudder Rig has left the location.
    - iii. BOP/BOPE test to be conducted per Onshore Oil and Gas Order No. 2 as soon as 2nd Rig is rigged up on well.
3. Floor controls are required for 3M or Greater systems. These controls will be on the rig floor, unobstructed, readily accessible to the driller and will be operational at all times during drilling and/or completion activities. Rig floor is defined as the area immediately around the rotary table; the area immediately above the substructure on which the draw works are located, this does not include the dog house or stairway area.
4. The record of the drilling rate along with the GR/N well log run from TD to surface (horizontal well – vertical portion of hole) shall be available upon request. The Rustler top and top and bottom of Salt are to be recorded on the Completion Report.

### **A. CASING**

1. Changes to the approved APD casing program need prior approval if the items substituted are of lesser grade or different casing size or are Non-API. The Operator can exchange the components of the proposal with that of superior strength (i.e. changing from J-55 to N-80, or from 36# to 40#). Changes to the approved cement program need prior approval if the altered cement plan has less volume or strength or if the changes are substantial (i.e. Multistage tool, ECP, etc.). The initial wellhead installed on the well will remain on the well with spools used as needed.
2. Wait on cement (WOC) for Potash Areas: After cementing but before commencing any tests, the casing string shall stand cemented under pressure until both of the

following conditions have been met: 1) cement reaches a minimum compressive strength of 500 psi for all cement blends, 2) until cement has been in place at least 24 hours. WOC time will be recorded in the driller's log. The casing integrity test can be done (prior to the cement setting up) immediately after bumping the plug.

3. Wait on cement (WOC) for Water Basin: After cementing but before commencing any tests, the casing string shall stand cemented under pressure until both of the following conditions have been met: 1) cement reaches a minimum compressive strength of 500 psi at the shoe, 2) until cement has been in place at least 8 hours. WOC time will be recorded in the driller's log. See individual casing strings for details regarding lead cement slurry requirements. The casing integrity test can be done (prior to the cement setting up) immediately after bumping the plug.
4. Provide compressive strengths including hours to reach required 500 pounds compressive strength prior to cementing each casing string. Have well-specific cement details onsite prior to pumping the cement for each casing string.
5. No pea gravel permitted for remedial or fall back remedial without prior authorization from the BLM engineer.
6. On the portion of well approved for a 5M BOPE system or greater, a pressure integrity test of each casing shoe shall be performed. Formation at the shoe shall be tested to a minimum of the mud weight equivalent anticipated to control the formation pressure to the next casing depth or at total depth of the well. This test shall be performed before drilling more than 20 feet of new hole.
7. If hardband drill pipe is rotated inside casing, returns will be monitored for metal. If metal is found in samples, drill pipe will be pulled and rubber protectors which have a larger diameter than the tool joints of the drill pipe will be installed prior to continuing drilling operations.
8. Whenever a casing string is cemented in the R-111-P potash area, the NMOCD requirements shall be followed.

## **B. PRESSURE CONTROL**

1. All blowout preventer (BOP) and related equipment (BOPE) shall comply with well control requirements as described in Onshore Oil and Gas Order No. 2 and API RP 53 Sec. 17.
2. If a variance is approved for a flexible hose to be installed from the BOP to the choke manifold, the following requirements apply: The flex line must meet the requirements of API 16C. Check condition of flexible line from BOP to choke manifold, replace if exterior is damaged or if line fails test. Line to be as straight as possible with no hard bends and is to be anchored according to Manufacturer's requirements. The flexible hose can be exchanged with a hose of equal size and equal or greater pressure rating. Anchor requirements, specification sheet and hydrostatic pressure test certification matching the hose in service, to be onsite for review. These documents shall be posted in the company man's trailer and on the rig floor.

3. If the operator has proposed a multi-bowl wellhead assembly in the APD, it must meet or exceed the pressure rating of the BOP system. Additionally, the following requirements must be met:
  - a. Wellhead shall be installed by manufacturer's representatives, submit documentation with subsequent sundry.
  - b. If the welding is performed by a third party, the manufacturer's representative shall monitor the temperature to verify that it does not exceed the maximum temperature of the seal.
  - c. Manufacturer representative shall install the test plug for the initial BOP test.
  - d. If the cement does not circulate and one inch operations would have been possible with a standard wellhead, the well head shall be cut off, cementing operations performed and another wellhead installed.
  - e. Whenever any seal subject to test pressure is broken, all the tests in Onshore Order 2 III.A.2.i must be followed.
5. The appropriate BLM office shall be notified a minimum of 4 hours in advance for a representative to witness the BOP/BOPE tests.
  - a. In a water basin, for all casing strings utilizing slips, these are to be set as soon as the crew and rig are ready and any fallback cement remediation has been done. The casing cut-off and BOP installation can be initiated four hours after installing the slips, which will be approximately six hours after bumping the plug. For those casing strings not using slips, the minimum wait time before cut-off is eight hours after bumping the plug. BOP/BOPE testing can begin after cut-off or once cement reaches 500 psi compressive strength (including lead when specified), whichever is greater. However, if the float does not hold, cut-off cannot be initiated until cement reaches 500 psi compressive strength (including lead when specified).
  - b. In potash areas, for all casing strings utilizing slips, these are to be set as soon as the crew and rig are ready and any fallback cement remediation has been done. For all casing strings, casing cut-off and BOP installation can be initiated at twelve hours after bumping the plug. However, **no tests** shall commence until the cement has had a minimum of 24 hours setup time, except the casing pressure test which can be initiated immediately after bumping the plug (only applies to single-stage cement jobs).
  - c. The tests shall be done by an independent service company utilizing a test plug. The results of the test shall be made available upon request.
  - d. The test shall be run on a 5000 psi chart for a 2-3M BOP/BOP, on a 10000 psi chart for a 5M BOP/BOPE and on a 15000 psi chart for a 10M BOP/BOPE. If a linear chart is used, it shall be a one hour chart. A circular chart shall have a maximum 2 hour clock. If a twelve hour or twenty-four hour chart is used, tester shall make a notation that it is run with a two hour clock.
  - e. The BOP/BOPE test shall include a low pressure test from 250 to 300 psi. The test will be held for a minimum of 10 minutes. This test shall be performed prior

- to the test at full stack pressure.
- f. BOP/BOPE must be tested within 500 feet of the top of the Wolfcamp formation if the time between the setting of the intermediate casing and reaching this depth exceeds 20 days. This test does not exclude the test prior to drilling out the casing shoe as per Onshore Order No. 2.

**C. DRILLING MUD**

1. Mud system monitoring equipment, with derrick floor indicators and visual and audio alarms, shall be operating before drilling into the Wolfcamp formation, and shall be used until production casing is run and cemented.

**D. WASTE MATERIAL AND FLUIDS**

1. All waste (i.e. drilling fluids, trash, salts, chemicals, sewage, gray water, etc.) created as a result of drilling operations and completion operations shall be safely contained and disposed of properly at a waste disposal facility. No waste material or fluid shall be disposed of on the well location or surrounding area.
2. Porto-johns and trash containers will be on-location during fracturing operations or any other crew-intensive operations.

# COG Operating, LLC - Tomahawk Federal Unit #714H

## 1. Geologic Formations

TVD of target	9,368' EOL	Pilot hole depth	NA
MD at TD:	20,105'	Deepest expected fresh water:	50'

Formation	Depth (TVD) from KB	Water/Mineral Bearing/ Target Zone?	Hazards*
Quaternary Fill	Surface	Water	
Rustler	400	Water	
Top of Salt	926	Salt	
Base of Salt	2243	Salt	
Lamar	2450	Salt Water	
Bell Canyon	2486	Salt Water	
Cherry Canyon	3268	Oil/Gas	
Brushy Canyon	4465	Oil/Gas	
Bone Spring Lime	5982	Oil/Gas	
U. Avalon Shale	6175	Oil/Gas	
L. Avalon Shale	6557	Oil/Gas	
1st Bone Spring Sand	6940	Oil/Gas	
2nd Bone Spring Sand	7684	Oil/Gas	
3rd Bone Spring Sand	8860	Oil/Gas	
Wolfcamp	9261	Target Oil/Gas	

## 2. Casing Program

Hole Size	Casing Interval		Csg. Size	Weight (lbs)	Grade	Conn.	SF Collapse	SF Burst	SF Tension
	From	To							
14.75	0	815	10.75	45.5	J55	STC	5.73	11.30	13.29
9.875	0	8710	7.625	29.7	HCL80	BTC	2.04	1.51	2.79
6.75	0	20,105	5.5"	23	P110	SF Torq	2.49	2.96	3.04
BLM Minimum Safety Factor							1.125	1	1.6 Dry 1.8 Wet

Intermediate casing will be kept at least 1/3 full while running casing to mitigate collapse. Intermediate burst based on 0.7 frac gradient at the shoe with Gas Gradient 0.1 psi/ft to surface.

All casing strings will be tested in accordance with Onshore Oil and Gas Order #2 III.B.1.h

# COG Operating, LLC - Tomahawk Federal Unit #714H

	Y or N
Is casing new? If used, attach certification as required in Onshore Order #1	Y
Does casing meet API specifications? If no, attach casing specification sheet.	Y
Is premium or uncommon casing planned? If yes attach casing specification sheet.	N
Does the above casing design meet or exceed BLM's minimum standards? If not provide justification (loading assumptions, casing design criteria).	Y
Will the intermediate pipe be kept at a minimum 1/3 fluid filled to avoid approaching the collapse pressure rating of the casing?	Y
Is well located within Capitan Reef?	N
If yes, does production casing cement tie back a minimum of 50' above the Reef?	
Is well within the designated 4 string boundary?	
Is well located in SOPA but not in R-111-P?	N
If yes, are the first 2 strings cemented to surface and 3 <sup>rd</sup> string cement tied back 500' into previous casing?	
Is well located in R-111-P and SOPA?	N
If yes, are the first three strings cemented to surface?	
Is 2 <sup>nd</sup> string set 100' to 600' below the base of salt?	
Is well located in high Cave/Karst?	N
If yes, are there two strings cemented to surface?	
(For 2 string wells) If yes, is there a contingency casing if lost circulation occurs?	
Is well located in critical Cave/Karst?	N
If yes, are there three strings cemented to surface?	

## COG Operating, LLC - Tomahawk Federal Unit #714H

### 3. Cementing Program

Casing	# Sks	Wt. lb/ gal	Yld ft <sup>3</sup> / sack	H <sub>2</sub> O gal/sk	500# Comp. Strength (hours)	Slurry Description
Surf.	300	13.5	1.75	9	12	Lead: Class C + 4% Gel
	250	14.8	1.34	6.34	8	Tail: Class C + 2% CaCl <sub>2</sub>
Inter.	1400	11	2.8	19	48	Lead: NeoCem
	300	16.4	1.1	5	8	Tail: Class H
5.5 Prod	750	12.7	2	10.6	16	Lead: 35:65:6 H Blend
	1200	14.4	1.24	5.7	19	Tail: 50:50:2 Class H Blend

Volumes Subject to Observed Hole Conditions and/or Fluid Caliper Results

Lab reports with the 500 psi compressive strength time for the cement will be onsite for review.

Casing String	TOC	% Excess
Surface	0'	50%
1 <sup>st</sup> Intermediate	0'	50%
Production	8,210'	35%

## COG Operating, LLC - Tomahawk Federal Unit #714H

### 4. Pressure Control Equipment

N	A variance is requested for the use of a diverter on the surface casing. See attached for schematic.
---	---

BOP installed and tested before drilling which hole?	Size?	Min. Required WP	Type	x	Tested to:
12-1/4"	13-5/8"	3M	Annular	x	2500 psi
			Blind Ram		3M
			Pipe Ram	x	
			Double Ram	x	
			Other*		
8 1/2"	13-5/8"	5M	5M Annular	x	2500 psi
			Blind Ram		5M
			Pipe Ram	x	
			Double Ram	x	
			Other*		

BOP and BOPE will be installed per Onshore Order #2 requirements prior to drilling below the surface casing and will be rated to the above pressure rating or greater, see attached diagrams. Required safety valves, with appropriate wrenches and subs for the drill string being utilized, will be in the open position and accessible on the rig floor.

BOP/BOPE will be tested by an independent service company to 250 psi low and the high pressure indicated above per Onshore Order 2 requirements. The System may be upgraded to a higher pressure but still tested to the working pressure listed in the table above. If the system is upgraded all the components installed will be functional and tested.

Pipe rams will be operationally checked each 24 hour period. Blind rams will be operationally checked on each trip out of the hole. These checks will be noted on the daily tour sheets. Other accessories to the BOP equipment will include a Kelly cock and floor safety valves (inside BOP and full-opening valve) with appropriate wrenches and choke lines and choke manifold. See attached schematics.

Y	Formation integrity test will be performed per Onshore Order #2.  On Exploratory wells or on that portion of any well approved for a 5M BOPE system or greater, a pressure integrity test of each casing shoe shall be performed. Will be tested in accordance with Onshore Oil and Gas Order #2 III.B.1.i.
Y	A variance is requested for the use of a flexible choke line from the BOP to Choke Manifold. See attached for specs and hydrostatic test chart.
N	Are anchors required by manufacturer?
Y	A multibowl wellhead is being used. The BOP will be tested per Onshore Order #2 after installation on the surface casing which will cover testing requirements for a maximum of 30 days. If any seal subject to test pressure is broken the system must be tested.

**5. Mud Program**

Depth		Type	Weight (ppg)	Viscosity	Water Loss
From	To				
0	Surf. Shoe	FW Gel	8.4 - 8.6	28-29	N/C
Surf csg	Int shoe	Diesel Brine Emul	8.6 - 9.4	30-40	N/C
Int shoe	Lateral TD	OBM	10.5 - 12	30-40	20

Sufficient mud materials to maintain mud properties and meet minimum lost circulation and weight increase requirements will be kept on location at all times.

What will be used to monitor the loss or gain of fluid?	PVT/Pason/Visual Monitoring
---	-----------------------------

**6. Logging and Testing Procedures**

Logging, Coring and Testing.	
<b>Y</b>	Will run GR/CNL from TD to surface (horizontal well – vertical portion of hole). Stated logs run will be in the Completion Report and submitted to the BLM.
<b>N</b>	Are Logs are planned based on well control or offset log information.
<b>N</b>	Drill stem test? If yes, explain.
<b>N</b>	Coring? If yes, explain.

Additional logs planned		Interval
<b>N</b>	Resistivity	Pilot Hole TD to ICP
<b>N</b>	Density	Pilot Hole TD to ICP
<b>Y</b>	CBL	Production casing (If cement not circulated to surface)
<b>Y</b>	Mud log	Intermediate shoe to TD
<b>N</b>	PEX	

## COG Operating, LLC - Tomahawk Federal Unit #714H

### 7. Drilling Conditions

Condition	Specify what type and where?
BH Pressure at deepest TVD	5850 psi at 9368' TVD
Abnormal Temperature	NO 150 Deg. F.

No abnormal pressure or temperature conditions are anticipated. Sufficient mud materials to maintain mud properties and weight increase requirements will be kept on location at all times.

Sufficient supplies of Paper/LCM for periodic sweeps to control seepage and losses will be maintained on location.

Hydrogen Sulfide (H <sub>2</sub> S) monitors will be installed prior to drilling out the surface shoe. If H <sub>2</sub> S is detected in concentrations greater than 100 ppm, the operator will comply with the provisions of Onshore Oil and Gas Order #6. If Hydrogen Sulfide is encountered, measured values and formations will be provided to the BLM.	
N	H <sub>2</sub> S is present
Y	H <sub>2</sub> S Plan attached

### 8. Other Facets of Operation

Y	Is it a walking operation?
Y	Is casing pre-set?

x	H <sub>2</sub> S Plan.
x	BOP & Choke Schematics.
x	Directional Plan
x	5M Annular Variance

**COG OPERATING LLC**  
**HYDROGEN SULFIDE DRILLING OPERATIONS PLAN**

**1. HYDROGEN SULFIDE TRAINING**

All personnel, whether regularly assigned, contracted, or employed on an unscheduled basis, will receive training from a qualified instructor in the following areas prior to commencing drilling operations on this well:

- a. The hazards and characteristics of hydrogen sulfide (H<sub>2</sub>S).
- b. The proper use and maintenance of personal protective equipment and life support systems.
- c. The proper use of H<sub>2</sub>S detectors, alarms, warning systems, briefing areas, evacuation procedures, and prevailing winds.
- d. The proper techniques for first aid and rescue procedures.

In addition, supervisory personnel will be trained in the following areas:

- a. The effects of H<sub>2</sub>S on metal components. If high tensile tubulars are to be used, personnel will be trained in their special maintenance requirements.
- b. Corrective action and shut-in procedures when drilling or reworking a well and blowout prevention and well control procedures.
- c. The contents and requirements of the H<sub>2</sub>S Drilling Operations Plan and the Public Protection Plan.

There will be an initial training session just prior to encountering a known or probable H<sub>2</sub>S zone (within 3 days or 500 feet) and weekly H<sub>2</sub>S and well control drills for all personnel in each crew. The initial training session shall include a review of the site specific H<sub>2</sub>S Drilling Operations Plan and the Public Protection Plan. This plan shall be available at the well site. All personnel will be required to carry documentation that they have received the proper training.

**2. H<sub>2</sub>S SAFETY EQUIPMENT AND SYSTEMS**

Note: All H<sub>2</sub>S safety equipment and systems will be installed, tested, and operational when drilling reaches a depth of 500 feet above, or three days prior to penetrating the first zone containing or reasonably expected to contain H<sub>2</sub>S. If H<sub>2</sub>S greater than 100 ppm is encountered in the gas stream we will shut in and install H<sub>2</sub>S equipment.

- a. Well Control Equipment:
  - Flare line.
  - Choke manifold with remotely operated choke.
  - Blind rams and pipe rams to accommodate all pipe sizes with properly sized closing unit.
  - Auxiliary equipment to include: annular preventer, mud-gas separator, rotating head.

- b. Protective equipment for essential personnel:  
Mark II Surviveair 30-minute units located in the dog house and at briefing areas.
- c. H2S detection and monitoring equipment:  
2 - portable H2S monitor positioned on location for best coverage and response. These units have warning lights and audible sirens when H2S levels of 20 ppm are reached.
- d. Visual warning systems:  
Caution/Danger signs shall be posted on roads providing direct access to location. Signs will be painted a high visibility yellow with black lettering of sufficient size to be readable at a reasonable distance from the immediate location. Bilingual signs will be used, when appropriate. See example attached.
- e. Mud Program:  
The mud program has been designed to minimize the volume of H2S circulated to the surface.
- f. Metallurgy:  
All drill strings, casings, tubing, wellhead, blowout preventers, drilling spool, kill lines, choke manifold and lines, and valves shall be suitable for H2S service.
- g. Communication:  
Company vehicles equipped with cellular telephone.

COG OPERATING LLC has conducted a review to determine if an H2S contingency plan is required for the above referenced well. We were able to conclude that any potential hazardous volume would be minimal. H2S concentrations of wells in this area from surface to TD are low enough; therefore, we do not believe that an H2S contingency plan is necessary.

# **W A R N I N G**

**YOU ARE ENTERING AN H<sub>2</sub>S AREA  
AUTHORIZED PERSONNEL ONLY**

- 1. BEARDS OR CONTACT LENSES NOT ALLOWED***
- 2. HARD HATS REQUIRED***
- 3. SMOKING IN DESIGNATED AREAS ONLY***
- 4. BE WIND CONSCIOUS AT ALL TIMES***
- 5. CK WITH COG OPERATING LLC FOREMAN AT MAIN OFFICE***

**COG OPERATING LLC**

**1-575-748-6940**

## **EMERGENCY CALL LIST**

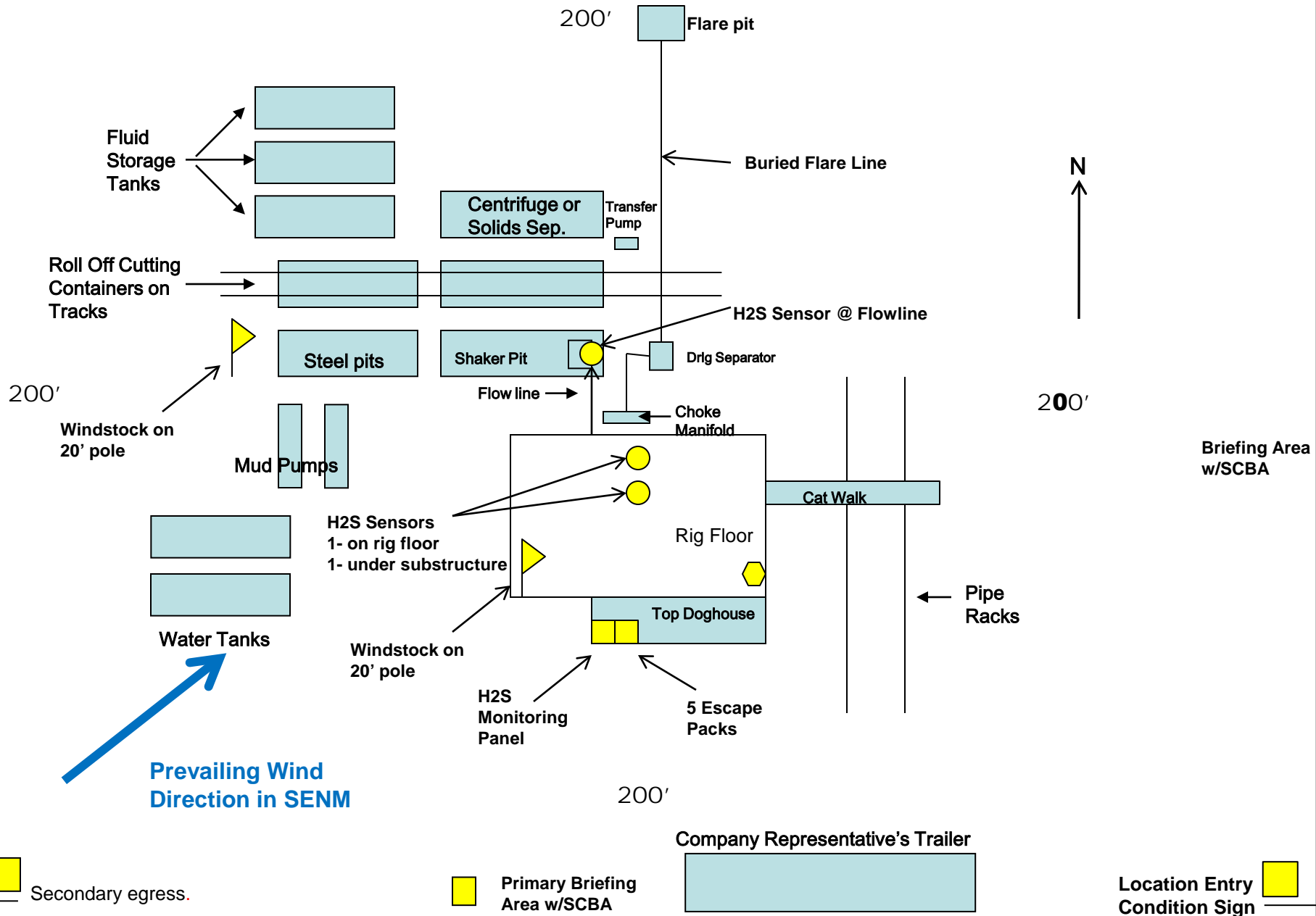
	<b><u>OFFICE</u></b>	<b><u>MOBILE</u></b>
COG OPERATING LLC OFFICE	575-748-6940	
SETH WILD	432-683-7443	432-528-3633
JOHN COFFMAN	432-685-4310	432-631-9762

## **EMERGENCY RESPONSE NUMBERS**

	<b><u>OFFICE</u></b>
STATE POLICE	575-748-9718
EDDY COUNTY SHERIFF	575-746-2701
EMERGENCY MEDICAL SERVICES (AMBULANCE)	911 or 575-746-2701
EDDY COUNTY EMERGENCY MANAGEMENT (HARRY BURGESS)	575-887-9511
STATE EMERGENCY RESPONSE CENTER (SERC)	575-476-9620
CARLSBAD POLICE DEPARTMENT	575-885-2111
CARLSBAD FIRE DEPARTMENT	575-885-3125
NEW MEXICO OIL CONSERVATION DIVISION	575-748-1283
INDIAN FIRE & SAFETY	800-530-8693
HALLIBURTON SERVICES	800-844-8451

COG Operating LLC  
H<sub>2</sub>S Equipment Schematic  
Terrain: Shinnery sand hills.

Well pad will be 400' x 400'  
with cellar in center of pad



# **NORTHERN DELAWARE BASIN**

**EDDY COUNTY, NM**

**ATLAS**

**TOMAHAWK FEDERAL UNIT #714H**

**OWB**

**Plan: PWP1**

## **Standard Survey Report**

**30 March, 2020**

# Concho Resources LLC

## Survey Report

<b>Company:</b>	NORTHERN DELAWARE BASIN	<b>Local Co-ordinate Reference:</b>	Well TOMAHAWK FEDERAL UNIT #714H
<b>Project:</b>	EDDY COUNTY, NM	<b>TVD Reference:</b>	KB=30' @ 3101.6usft (TBD)
<b>Site:</b>	ATLAS	<b>MD Reference:</b>	KB=30' @ 3101.6usft (TBD)
<b>Well:</b>	TOMAHAWK FEDERAL UNIT #714H	<b>North Reference:</b>	Grid
<b>Wellbore:</b>	OWB	<b>Survey Calculation Method:</b>	Minimum Curvature
<b>Design:</b>	PWP1	<b>Database:</b>	edm

<b>Project</b>	EDDY COUNTY, NM		
<b>Map System:</b>	US State Plane 1927 (Exact solution)	<b>System Datum:</b>	Mean Sea Level
<b>Geo Datum:</b>	NAD 1927 (NADCON CONUS)		
<b>Map Zone:</b>	New Mexico East 3001		

<b>Well</b>	TOMAHAWK FEDERAL UNIT #714H			
<b>Well Position</b>	<b>+N/-S</b>	0.0 usft	<b>Northing:</b>	434,523.10 usft
	<b>+E/-W</b>	0.0 usft	<b>Easting:</b>	565,619.00 usft
<b>Position Uncertainty</b>		3.0 usft	<b>Wellhead Elevation:</b>	usft
			<b>Latitude:</b>	32° 11' 39.995 N
			<b>Longitude:</b>	104° 7' 16.345 W
			<b>Ground Level:</b>	3,071.6 usft

<b>Wellbore</b>	OWB				
<b>Magnetics</b>	<b>Model Name</b>	<b>Sample Date</b>	<b>Declination (°)</b>	<b>Dip Angle (°)</b>	<b>Field Strength (nT)</b>
	IGRF2015	3/27/2020	6.91	59.91	47,579.95948247

<b>Design</b>	PWP1				
<b>Audit Notes:</b>					
<b>Version:</b>	<b>Phase:</b>	PLAN	<b>Tie On Depth:</b>	0.0	
<b>Vertical Section:</b>	<b>Depth From (TVD) (usft)</b>	<b>+N/-S (usft)</b>	<b>+E/-W (usft)</b>	<b>Direction (°)</b>	
	0.0	0.0	0.0	4.65	

<b>Survey Tool Program</b>	<b>Date</b>	3/30/2020			
<b>From (usft)</b>	<b>To (usft)</b>	<b>Survey (Wellbore)</b>	<b>Tool Name</b>	<b>Description</b>	
0.0	20,104.9	PWP1 (OWB)	MWD+IFR1+FDIR	OWSG MWD + IFR1 + FDIR Correction	

<b>Planned Survey</b>										
<b>Measured Depth (usft)</b>	<b>Inclination (°)</b>	<b>Azimuth (°)</b>	<b>Vertical Depth (usft)</b>	<b>+N/-S (usft)</b>	<b>+E/-W (usft)</b>	<b>Vertical Section (usft)</b>	<b>Dogleg Rate (°/100usft)</b>	<b>Build Rate (°/100usft)</b>	<b>Turn Rate (°/100usft)</b>	
0.0	0.00	0.00	0.0	0.0	0.0	0.0	0.00	0.00	0.00	
100.0	0.00	0.00	100.0	0.0	0.0	0.0	0.00	0.00	0.00	
200.0	0.00	0.00	200.0	0.0	0.0	0.0	0.00	0.00	0.00	
300.0	0.00	0.00	300.0	0.0	0.0	0.0	0.00	0.00	0.00	
400.0	0.00	0.00	400.0	0.0	0.0	0.0	0.00	0.00	0.00	
500.0	0.00	0.00	500.0	0.0	0.0	0.0	0.00	0.00	0.00	
600.0	0.00	0.00	600.0	0.0	0.0	0.0	0.00	0.00	0.00	
700.0	0.00	0.00	700.0	0.0	0.0	0.0	0.00	0.00	0.00	
800.0	0.00	0.00	800.0	0.0	0.0	0.0	0.00	0.00	0.00	
900.0	0.00	0.00	900.0	0.0	0.0	0.0	0.00	0.00	0.00	
1,000.0	0.00	0.00	1,000.0	0.0	0.0	0.0	0.00	0.00	0.00	
1,100.0	0.00	0.00	1,100.0	0.0	0.0	0.0	0.00	0.00	0.00	
1,200.0	0.00	0.00	1,200.0	0.0	0.0	0.0	0.00	0.00	0.00	
1,300.0	0.00	0.00	1,300.0	0.0	0.0	0.0	0.00	0.00	0.00	
1,400.0	0.00	0.00	1,400.0	0.0	0.0	0.0	0.00	0.00	0.00	

# Concho Resources LLC

## Survey Report

<b>Company:</b>	NORTHERN DELAWARE BASIN	<b>Local Co-ordinate Reference:</b>	Well TOMAHAWK FEDERAL UNIT #714H
<b>Project:</b>	EDDY COUNTY, NM	<b>TVD Reference:</b>	KB=30' @ 3101.6usft (TBD)
<b>Site:</b>	ATLAS	<b>MD Reference:</b>	KB=30' @ 3101.6usft (TBD)
<b>Well:</b>	TOMAHAWK FEDERAL UNIT #714H	<b>North Reference:</b>	Grid
<b>Wellbore:</b>	OWB	<b>Survey Calculation Method:</b>	Minimum Curvature
<b>Design:</b>	PWP1	<b>Database:</b>	edm

### Planned Survey

Measured Depth (usft)	Inclination (°)	Azimuth (°)	Vertical Depth (usft)	+N/-S (usft)	+E/-W (usft)	Vertical Section (usft)	Dogleg Rate (°/100usft)	Build Rate (°/100usft)	Turn Rate (°/100usft)
1,500.0	0.00	0.00	1,500.0	0.0	0.0	0.0	0.00	0.00	0.00
1,600.0	0.00	0.00	1,600.0	0.0	0.0	0.0	0.00	0.00	0.00
1,700.0	0.00	0.00	1,700.0	0.0	0.0	0.0	0.00	0.00	0.00
1,800.0	0.00	0.00	1,800.0	0.0	0.0	0.0	0.00	0.00	0.00
1,900.0	0.00	0.00	1,900.0	0.0	0.0	0.0	0.00	0.00	0.00
2,000.0	0.00	0.00	2,000.0	0.0	0.0	0.0	0.00	0.00	0.00
2,100.0	0.00	0.00	2,100.0	0.0	0.0	0.0	0.00	0.00	0.00
2,200.0	0.00	0.00	2,200.0	0.0	0.0	0.0	0.00	0.00	0.00
2,300.0	0.00	0.00	2,300.0	0.0	0.0	0.0	0.00	0.00	0.00
2,400.0	0.00	0.00	2,400.0	0.0	0.0	0.0	0.00	0.00	0.00
2,500.0	0.00	0.00	2,500.0	0.0	0.0	0.0	0.00	0.00	0.00
<b>Start Build 2.00</b>									
2,600.0	2.00	90.00	2,600.0	0.0	1.7	0.1	2.00	2.00	0.00
2,700.0	4.00	90.00	2,699.8	0.0	7.0	0.6	2.00	2.00	0.00
2,750.0	5.00	90.00	2,749.7	0.0	10.9	0.9	2.00	2.00	0.00
<b>Start 6086.7 hold at 2750.0 MD</b>									
2,800.0	5.00	90.00	2,799.5	0.0	15.3	1.2	0.00	0.00	0.00
2,900.0	5.00	90.00	2,899.1	0.0	24.0	1.9	0.00	0.00	0.00
3,000.0	5.00	90.00	2,998.7	0.0	32.7	2.7	0.00	0.00	0.00
3,100.0	5.00	90.00	3,098.4	0.0	41.4	3.4	0.00	0.00	0.00
3,200.0	5.00	90.00	3,198.0	0.0	50.1	4.1	0.00	0.00	0.00
3,300.0	5.00	90.00	3,297.6	0.0	58.8	4.8	0.00	0.00	0.00
3,400.0	5.00	90.00	3,397.2	0.0	67.6	5.5	0.00	0.00	0.00
3,500.0	5.00	90.00	3,496.8	0.0	76.3	6.2	0.00	0.00	0.00
3,600.0	5.00	90.00	3,596.4	0.0	85.0	6.9	0.00	0.00	0.00
3,700.0	5.00	90.00	3,696.1	0.0	93.7	7.6	0.00	0.00	0.00
3,800.0	5.00	90.00	3,795.7	0.0	102.4	8.3	0.00	0.00	0.00
3,900.0	5.00	90.00	3,895.3	0.0	111.1	9.0	0.00	0.00	0.00
4,000.0	5.00	90.00	3,994.9	0.0	119.8	9.7	0.00	0.00	0.00
4,100.0	5.00	90.00	4,094.5	0.0	128.6	10.4	0.00	0.00	0.00
4,200.0	5.00	90.00	4,194.2	0.0	137.3	11.1	0.00	0.00	0.00
4,300.0	5.00	90.00	4,293.8	0.0	146.0	11.8	0.00	0.00	0.00
4,400.0	5.00	90.00	4,393.4	0.0	154.7	12.5	0.00	0.00	0.00
4,500.0	5.00	90.00	4,493.0	0.0	163.4	13.3	0.00	0.00	0.00
4,600.0	5.00	90.00	4,592.6	0.0	172.1	14.0	0.00	0.00	0.00
4,700.0	5.00	90.00	4,692.3	0.0	180.9	14.7	0.00	0.00	0.00
4,800.0	5.00	90.00	4,791.9	0.0	189.6	15.4	0.00	0.00	0.00
4,900.0	5.00	90.00	4,891.5	0.0	198.3	16.1	0.00	0.00	0.00
5,000.0	5.00	90.00	4,991.1	0.0	207.0	16.8	0.00	0.00	0.00
5,100.0	5.00	90.00	5,090.7	0.0	215.7	17.5	0.00	0.00	0.00
5,200.0	5.00	90.00	5,190.4	0.0	224.4	18.2	0.00	0.00	0.00
5,300.0	5.00	90.00	5,290.0	0.0	233.1	18.9	0.00	0.00	0.00
5,400.0	5.00	90.00	5,389.6	0.0	241.9	19.6	0.00	0.00	0.00
5,500.0	5.00	90.00	5,489.2	0.0	250.6	20.3	0.00	0.00	0.00

# Concho Resources LLC

## Survey Report

<b>Company:</b>	NORTHERN DELAWARE BASIN	<b>Local Co-ordinate Reference:</b>	Well TOMAHAWK FEDERAL UNIT #714H
<b>Project:</b>	EDDY COUNTY, NM	<b>TVD Reference:</b>	KB=30' @ 3101.6usft (TBD)
<b>Site:</b>	ATLAS	<b>MD Reference:</b>	KB=30' @ 3101.6usft (TBD)
<b>Well:</b>	TOMAHAWK FEDERAL UNIT #714H	<b>North Reference:</b>	Grid
<b>Wellbore:</b>	OWB	<b>Survey Calculation Method:</b>	Minimum Curvature
<b>Design:</b>	PWP1	<b>Database:</b>	edm

### Planned Survey

Measured Depth (usft)	Inclination (°)	Azimuth (°)	Vertical Depth (usft)	+N/-S (usft)	+E/-W (usft)	Vertical Section (usft)	Dogleg Rate (°/100usft)	Build Rate (°/100usft)	Turn Rate (°/100usft)
5,600.0	5.00	90.00	5,588.8	0.0	259.3	21.0	0.00	0.00	0.00
5,700.0	5.00	90.00	5,688.5	0.0	268.0	21.7	0.00	0.00	0.00
5,800.0	5.00	90.00	5,788.1	0.0	276.7	22.4	0.00	0.00	0.00
5,900.0	5.00	90.00	5,887.7	0.0	285.4	23.2	0.00	0.00	0.00
6,000.0	5.00	90.00	5,987.3	0.0	294.2	23.9	0.00	0.00	0.00
6,100.0	5.00	90.00	6,086.9	0.0	302.9	24.6	0.00	0.00	0.00
6,200.0	5.00	90.00	6,186.6	0.0	311.6	25.3	0.00	0.00	0.00
6,300.0	5.00	90.00	6,286.2	0.0	320.3	26.0	0.00	0.00	0.00
6,400.0	5.00	90.00	6,385.8	0.0	329.0	26.7	0.00	0.00	0.00
6,500.0	5.00	90.00	6,485.4	0.0	337.7	27.4	0.00	0.00	0.00
6,600.0	5.00	90.00	6,585.0	0.0	346.5	28.1	0.00	0.00	0.00
6,700.0	5.00	90.00	6,684.7	0.0	355.2	28.8	0.00	0.00	0.00
6,800.0	5.00	90.00	6,784.3	0.0	363.9	29.5	0.00	0.00	0.00
6,900.0	5.00	90.00	6,883.9	0.0	372.6	30.2	0.00	0.00	0.00
7,000.0	5.00	90.00	6,983.5	0.0	381.3	30.9	0.00	0.00	0.00
7,100.0	5.00	90.00	7,083.1	0.0	390.0	31.6	0.00	0.00	0.00
7,200.0	5.00	90.00	7,182.7	0.0	398.7	32.3	0.00	0.00	0.00
7,300.0	5.00	90.00	7,282.4	0.0	407.5	33.1	0.00	0.00	0.00
7,400.0	5.00	90.00	7,382.0	0.0	416.2	33.8	0.00	0.00	0.00
7,500.0	5.00	90.00	7,481.6	0.0	424.9	34.5	0.00	0.00	0.00
7,600.0	5.00	90.00	7,581.2	0.0	433.6	35.2	0.00	0.00	0.00
7,700.0	5.00	90.00	7,680.8	0.0	442.3	35.9	0.00	0.00	0.00
7,800.0	5.00	90.00	7,780.5	0.0	451.0	36.6	0.00	0.00	0.00
7,900.0	5.00	90.00	7,880.1	0.0	459.8	37.3	0.00	0.00	0.00
8,000.0	5.00	90.00	7,979.7	0.0	468.5	38.0	0.00	0.00	0.00
8,100.0	5.00	90.00	8,079.3	0.0	477.2	38.7	0.00	0.00	0.00
8,200.0	5.00	90.00	8,178.9	0.0	485.9	39.4	0.00	0.00	0.00
8,300.0	5.00	90.00	8,278.6	0.0	494.6	40.1	0.00	0.00	0.00
8,400.0	5.00	90.00	8,378.2	0.0	503.3	40.8	0.00	0.00	0.00
8,500.0	5.00	90.00	8,477.8	0.0	512.0	41.5	0.00	0.00	0.00
8,600.0	5.00	90.00	8,577.4	0.0	520.8	42.2	0.00	0.00	0.00
8,700.0	5.00	90.00	8,677.0	0.0	529.5	42.9	0.00	0.00	0.00
8,800.0	5.00	90.00	8,776.7	0.0	538.2	43.7	0.00	0.00	0.00
8,836.7	5.00	90.00	8,813.2	0.0	541.4	43.9	0.00	0.00	0.00
<b>Start DLS 10.00 TFO -71.12</b>									
8,900.0	9.25	49.50	8,876.1	3.3	548.0	47.7	10.00	6.71	-63.96
9,000.0	18.55	33.23	8,973.1	21.9	562.9	67.5	10.00	9.30	-16.27
9,100.0	28.32	27.78	9,064.7	56.3	582.7	103.3	10.00	9.77	-5.45
9,200.0	38.20	24.98	9,148.2	105.4	606.9	154.3	10.00	9.88	-2.80
9,300.0	48.13	23.20	9,221.1	167.8	634.7	218.7	10.00	9.93	-1.78
9,400.0	58.08	21.90	9,281.0	241.6	665.3	294.7	10.00	9.95	-1.30
9,500.0	68.03	20.86	9,326.3	324.5	697.7	380.0	10.00	9.96	-1.04
9,600.0	78.00	19.96	9,355.5	414.0	731.0	472.0	10.00	9.96	-0.90
9,700.0	87.96	19.12	9,367.7	507.4	764.1	567.8	10.00	9.97	-0.84

# Concho Resources LLC

## Survey Report

<b>Company:</b>	NORTHERN DELAWARE BASIN	<b>Local Co-ordinate Reference:</b>	Well TOMAHAWK FEDERAL UNIT #714H
<b>Project:</b>	EDDY COUNTY, NM	<b>TVD Reference:</b>	KB=30' @ 3101.6usft (TBD)
<b>Site:</b>	ATLAS	<b>MD Reference:</b>	KB=30' @ 3101.6usft (TBD)
<b>Well:</b>	TOMAHAWK FEDERAL UNIT #714H	<b>North Reference:</b>	Grid
<b>Wellbore:</b>	OWB	<b>Survey Calculation Method:</b>	Minimum Curvature
<b>Design:</b>	PWP1	<b>Database:</b>	edm

### Planned Survey

Measured Depth (usft)	Inclination (°)	Azimuth (°)	Vertical Depth (usft)	+N/-S (usft)	+E/-W (usft)	Vertical Section (usft)	Dogleg Rate (°/100usft)	Build Rate (°/100usft)	Turn Rate (°/100usft)
9,720.2	89.97	18.95	9,368.0	526.5	770.7	587.3	10.00	9.97	-0.83
<b>Start DLS 2.00 TFO -90.01</b>									
9,800.0	89.97	17.35	9,368.1	602.4	795.6	664.9	2.00	0.00	-2.00
9,900.0	89.97	15.35	9,368.1	698.3	823.7	762.8	2.00	0.00	-2.00
10,000.0	89.97	13.35	9,368.2	795.2	848.5	861.4	2.00	0.00	-2.00
10,100.0	89.97	11.35	9,368.3	892.9	869.9	960.5	2.00	0.00	-2.00
10,200.0	89.97	9.35	9,368.3	991.2	887.9	1,060.0	2.00	0.00	-2.00
10,300.0	89.97	7.35	9,368.4	1,090.2	902.4	1,159.8	2.00	0.00	-2.00
10,400.0	89.97	5.35	9,368.4	1,189.6	913.5	1,259.7	2.00	0.00	-2.00
10,500.0	89.97	3.35	9,368.5	1,289.3	921.0	1,359.7	2.00	0.00	-2.00
10,600.0	89.97	1.35	9,368.5	1,389.2	925.1	1,459.6	2.00	0.00	-2.00
10,679.6	89.97	359.76	9,368.6	1,468.8	925.9	1,539.0	2.00	0.00	-2.00
<b>Start 9425.8 hold at 10679.6 MD</b>									
10,700.0	89.97	359.76	9,368.6	1,489.2	925.8	1,559.4	0.00	0.00	0.00
10,800.0	89.97	359.76	9,368.6	1,589.2	925.4	1,659.0	0.00	0.00	0.00
10,900.0	89.97	359.76	9,368.7	1,689.2	925.0	1,758.6	0.00	0.00	0.00
11,000.0	89.97	359.76	9,368.8	1,789.2	924.6	1,858.3	0.00	0.00	0.00
11,100.0	89.97	359.76	9,368.8	1,889.2	924.2	1,957.9	0.00	0.00	0.00
11,200.0	89.97	359.76	9,368.9	1,989.2	923.8	2,057.5	0.00	0.00	0.00
11,300.0	89.97	359.76	9,368.9	2,089.2	923.3	2,157.2	0.00	0.00	0.00
11,400.0	89.97	359.76	9,369.0	2,189.2	922.9	2,256.8	0.00	0.00	0.00
11,500.0	89.97	359.76	9,369.1	2,289.2	922.5	2,356.4	0.00	0.00	0.00
11,600.0	89.97	359.76	9,369.1	2,389.2	922.1	2,456.1	0.00	0.00	0.00
11,700.0	89.97	359.76	9,369.2	2,489.2	921.7	2,555.7	0.00	0.00	0.00
11,800.0	89.97	359.76	9,369.2	2,589.2	921.2	2,655.3	0.00	0.00	0.00
11,900.0	89.97	359.76	9,369.3	2,689.2	920.8	2,755.0	0.00	0.00	0.00
12,000.0	89.97	359.76	9,369.3	2,789.2	920.4	2,854.6	0.00	0.00	0.00
12,100.0	89.97	359.76	9,369.4	2,889.1	920.0	2,954.3	0.00	0.00	0.00
12,200.0	89.97	359.76	9,369.5	2,989.1	919.6	3,053.9	0.00	0.00	0.00
12,300.0	89.97	359.76	9,369.5	3,089.1	919.2	3,153.5	0.00	0.00	0.00
12,400.0	89.97	359.76	9,369.6	3,189.1	918.7	3,253.2	0.00	0.00	0.00
12,500.0	89.97	359.76	9,369.6	3,289.1	918.3	3,352.8	0.00	0.00	0.00
12,600.0	89.97	359.76	9,369.7	3,389.1	917.9	3,452.4	0.00	0.00	0.00
12,700.0	89.97	359.76	9,369.7	3,489.1	917.5	3,552.1	0.00	0.00	0.00
12,800.0	89.97	359.76	9,369.8	3,589.1	917.1	3,651.7	0.00	0.00	0.00
12,900.0	89.97	359.76	9,369.9	3,689.1	916.7	3,751.3	0.00	0.00	0.00
13,000.0	89.97	359.76	9,369.9	3,789.1	916.2	3,851.0	0.00	0.00	0.00
13,100.0	89.97	359.76	9,370.0	3,889.1	915.8	3,950.6	0.00	0.00	0.00
13,200.0	89.97	359.76	9,370.0	3,989.1	915.4	4,050.2	0.00	0.00	0.00
13,300.0	89.97	359.76	9,370.1	4,089.1	915.0	4,149.9	0.00	0.00	0.00
13,400.0	89.97	359.76	9,370.1	4,189.1	914.6	4,249.5	0.00	0.00	0.00
13,500.0	89.97	359.76	9,370.2	4,289.1	914.2	4,349.2	0.00	0.00	0.00
13,600.0	89.97	359.76	9,370.3	4,389.1	913.7	4,448.8	0.00	0.00	0.00

# Concho Resources LLC

## Survey Report

<b>Company:</b>	NORTHERN DELAWARE BASIN	<b>Local Co-ordinate Reference:</b>	Well TOMAHAWK FEDERAL UNIT #714H
<b>Project:</b>	EDDY COUNTY, NM	<b>TVD Reference:</b>	KB=30' @ 3101.6usft (TBD)
<b>Site:</b>	ATLAS	<b>MD Reference:</b>	KB=30' @ 3101.6usft (TBD)
<b>Well:</b>	TOMAHAWK FEDERAL UNIT #714H	<b>North Reference:</b>	Grid
<b>Wellbore:</b>	OWB	<b>Survey Calculation Method:</b>	Minimum Curvature
<b>Design:</b>	PWP1	<b>Database:</b>	edm

### Planned Survey

Measured Depth (usft)	Inclination (°)	Azimuth (°)	Vertical Depth (usft)	+N/-S (usft)	+E/-W (usft)	Vertical Section (usft)	Dogleg Rate (°/100usft)	Build Rate (°/100usft)	Turn Rate (°/100usft)
13,700.0	89.97	359.76	9,370.3	4,489.1	913.3	4,548.4	0.00	0.00	0.00
13,800.0	89.97	359.76	9,370.4	4,589.1	912.9	4,648.1	0.00	0.00	0.00
13,900.0	89.97	359.76	9,370.4	4,689.1	912.5	4,747.7	0.00	0.00	0.00
14,000.0	89.97	359.76	9,370.5	4,789.1	912.1	4,847.3	0.00	0.00	0.00
14,100.0	89.97	359.76	9,370.5	4,889.1	911.7	4,947.0	0.00	0.00	0.00
14,200.0	89.97	359.76	9,370.6	4,989.1	911.2	5,046.6	0.00	0.00	0.00
14,300.0	89.97	359.76	9,370.7	5,089.1	910.8	5,146.2	0.00	0.00	0.00
14,400.0	89.97	359.76	9,370.7	5,189.1	910.4	5,245.9	0.00	0.00	0.00
14,500.0	89.97	359.76	9,370.8	5,289.1	910.0	5,345.5	0.00	0.00	0.00
14,600.0	89.97	359.76	9,370.8	5,389.1	909.6	5,445.1	0.00	0.00	0.00
14,700.0	89.97	359.76	9,370.9	5,489.1	909.2	5,544.8	0.00	0.00	0.00
14,800.0	89.97	359.76	9,370.9	5,589.1	908.7	5,644.4	0.00	0.00	0.00
14,900.0	89.97	359.76	9,371.0	5,689.1	908.3	5,744.1	0.00	0.00	0.00
15,000.0	89.97	359.76	9,371.1	5,789.1	907.9	5,843.7	0.00	0.00	0.00
15,100.0	89.97	359.76	9,371.1	5,889.1	907.5	5,943.3	0.00	0.00	0.00
15,200.0	89.97	359.76	9,371.2	5,989.1	907.1	6,043.0	0.00	0.00	0.00
15,300.0	89.97	359.76	9,371.2	6,089.1	906.6	6,142.6	0.00	0.00	0.00
15,400.0	89.97	359.76	9,371.3	6,189.1	906.2	6,242.2	0.00	0.00	0.00
15,500.0	89.97	359.76	9,371.4	6,289.1	905.8	6,341.9	0.00	0.00	0.00
15,600.0	89.97	359.76	9,371.4	6,389.1	905.4	6,441.5	0.00	0.00	0.00
15,700.0	89.97	359.76	9,371.5	6,489.1	905.0	6,541.1	0.00	0.00	0.00
15,800.0	89.97	359.76	9,371.5	6,589.1	904.6	6,640.8	0.00	0.00	0.00
15,900.0	89.97	359.76	9,371.6	6,689.1	904.1	6,740.4	0.00	0.00	0.00
16,000.0	89.97	359.76	9,371.6	6,789.1	903.7	6,840.0	0.00	0.00	0.00
16,100.0	89.97	359.76	9,371.7	6,889.1	903.3	6,939.7	0.00	0.00	0.00
16,200.0	89.97	359.76	9,371.8	6,989.1	902.9	7,039.3	0.00	0.00	0.00
16,300.0	89.97	359.76	9,371.8	7,089.1	902.5	7,139.0	0.00	0.00	0.00
16,400.0	89.97	359.76	9,371.9	7,189.1	902.1	7,238.6	0.00	0.00	0.00
16,500.0	89.97	359.76	9,371.9	7,289.1	901.6	7,338.2	0.00	0.00	0.00
16,600.0	89.97	359.76	9,372.0	7,389.1	901.2	7,437.9	0.00	0.00	0.00
16,700.0	89.97	359.76	9,372.0	7,489.1	900.8	7,537.5	0.00	0.00	0.00
16,800.0	89.97	359.76	9,372.1	7,589.1	900.4	7,637.1	0.00	0.00	0.00
16,900.0	89.97	359.76	9,372.2	7,689.1	900.0	7,736.8	0.00	0.00	0.00
17,000.0	89.97	359.76	9,372.2	7,789.1	899.6	7,836.4	0.00	0.00	0.00
17,100.0	89.97	359.76	9,372.3	7,889.1	899.1	7,936.0	0.00	0.00	0.00
17,200.0	89.97	359.76	9,372.3	7,989.1	898.7	8,035.7	0.00	0.00	0.00
17,300.0	89.97	359.76	9,372.4	8,089.1	898.3	8,135.3	0.00	0.00	0.00
17,400.0	89.97	359.76	9,372.4	8,189.1	897.9	8,234.9	0.00	0.00	0.00
17,500.0	89.97	359.76	9,372.5	8,289.1	897.5	8,334.6	0.00	0.00	0.00
17,600.0	89.97	359.76	9,372.6	8,389.1	897.1	8,434.2	0.00	0.00	0.00
17,700.0	89.97	359.76	9,372.6	8,489.1	896.6	8,533.9	0.00	0.00	0.00
17,800.0	89.97	359.76	9,372.7	8,589.1	896.2	8,633.5	0.00	0.00	0.00
17,900.0	89.97	359.76	9,372.7	8,689.1	895.8	8,733.1	0.00	0.00	0.00
18,000.0	89.97	359.76	9,372.8	8,789.1	895.4	8,832.8	0.00	0.00	0.00

# Concho Resources LLC

## Survey Report

<b>Company:</b>	NORTHERN DELAWARE BASIN	<b>Local Co-ordinate Reference:</b>	Well TOMAHAWK FEDERAL UNIT #714H
<b>Project:</b>	EDDY COUNTY, NM	<b>TVD Reference:</b>	KB=30' @ 3101.6usft (TBD)
<b>Site:</b>	ATLAS	<b>MD Reference:</b>	KB=30' @ 3101.6usft (TBD)
<b>Well:</b>	TOMAHAWK FEDERAL UNIT #714H	<b>North Reference:</b>	Grid
<b>Wellbore:</b>	OWB	<b>Survey Calculation Method:</b>	Minimum Curvature
<b>Design:</b>	PWP1	<b>Database:</b>	edm

### Planned Survey

Measured Depth (usft)	Inclination (°)	Azimuth (°)	Vertical Depth (usft)	+N/-S (usft)	+E/-W (usft)	Vertical Section (usft)	Dogleg Rate (°/100usft)	Build Rate (°/100usft)	Turn Rate (°/100usft)
18,100.0	89.97	359.76	9,372.8	8,889.1	895.0	8,932.4	0.00	0.00	0.00
18,200.0	89.97	359.76	9,372.9	8,989.1	894.5	9,032.0	0.00	0.00	0.00
18,300.0	89.97	359.76	9,373.0	9,089.1	894.1	9,131.7	0.00	0.00	0.00
18,400.0	89.97	359.76	9,373.0	9,189.1	893.7	9,231.3	0.00	0.00	0.00
18,500.0	89.97	359.76	9,373.1	9,289.1	893.3	9,330.9	0.00	0.00	0.00
18,600.0	89.97	359.76	9,373.1	9,389.1	892.9	9,430.6	0.00	0.00	0.00
18,700.0	89.97	359.76	9,373.2	9,489.1	892.5	9,530.2	0.00	0.00	0.00
18,800.0	89.97	359.76	9,373.2	9,589.1	892.0	9,629.8	0.00	0.00	0.00
18,900.0	89.97	359.76	9,373.3	9,689.1	891.6	9,729.5	0.00	0.00	0.00
19,000.0	89.97	359.76	9,373.4	9,789.1	891.2	9,829.1	0.00	0.00	0.00
19,100.0	89.97	359.76	9,373.4	9,889.1	890.8	9,928.8	0.00	0.00	0.00
19,200.0	89.97	359.76	9,373.5	9,989.1	890.4	10,028.4	0.00	0.00	0.00
19,300.0	89.97	359.76	9,373.5	10,089.1	890.0	10,128.0	0.00	0.00	0.00
19,400.0	89.97	359.76	9,373.6	10,189.1	889.5	10,227.7	0.00	0.00	0.00
19,500.0	89.97	359.76	9,373.7	10,289.1	889.1	10,327.3	0.00	0.00	0.00
19,600.0	89.97	359.76	9,373.7	10,389.1	888.7	10,426.9	0.00	0.00	0.00
19,700.0	89.97	359.76	9,373.8	10,489.1	888.3	10,526.6	0.00	0.00	0.00
19,800.0	89.97	359.76	9,373.8	10,589.1	887.9	10,626.2	0.00	0.00	0.00
19,900.0	89.97	359.76	9,373.9	10,689.1	887.5	10,725.8	0.00	0.00	0.00
20,000.0	89.97	359.76	9,373.9	10,789.1	887.0	10,825.5	0.00	0.00	0.00
20,100.0	89.97	359.76	9,374.0	10,889.1	886.6	10,925.1	0.00	0.00	0.00
20,105.4	89.97	359.76	9,374.0	10,894.5	886.6	10,930.5	0.00	0.00	0.00
TD at 20105.4									

### Design Targets

Target Name	Dip Angle (°)	Dip Dir. (°)	TVD (usft)	+N/-S (usft)	+E/-W (usft)	Northing (usft)	Easting (usft)	Latitude	Longitude
FTP (TOMAHAWK FE - hit/miss target - Shape - plan misses target center by 151.7usft at 9768.8usft MD (9368.1 TVD, 572.6 N, 786.1 E) - Circle (radius 50.0)	0.00	0.00	9,368.0	525.4	930.2	435,048.50	566,549.20	32° 11' 45.177 N	104° 7' 5.507 W
LTP (TOMAHAWK FE - plan misses target center by 0.1usft at 19975.4usft MD (9373.9 TVD, 10764.5 N, 887.1 E) - Point	0.00	0.00	9,374.0	10,764.5	887.2	445,287.60	566,506.20	32° 13' 26.507 N	104° 7' 5.769 W
PBHL (TOMAHAWK F - plan hits target center - Rectangle (sides W100.0 H10,369.2 D20.0)	-0.03	179.76	9,374.0	10,894.5	886.6	445,417.60	566,505.60	32° 13' 27.794 N	104° 7' 5.773 W

# Concho Resources LLC

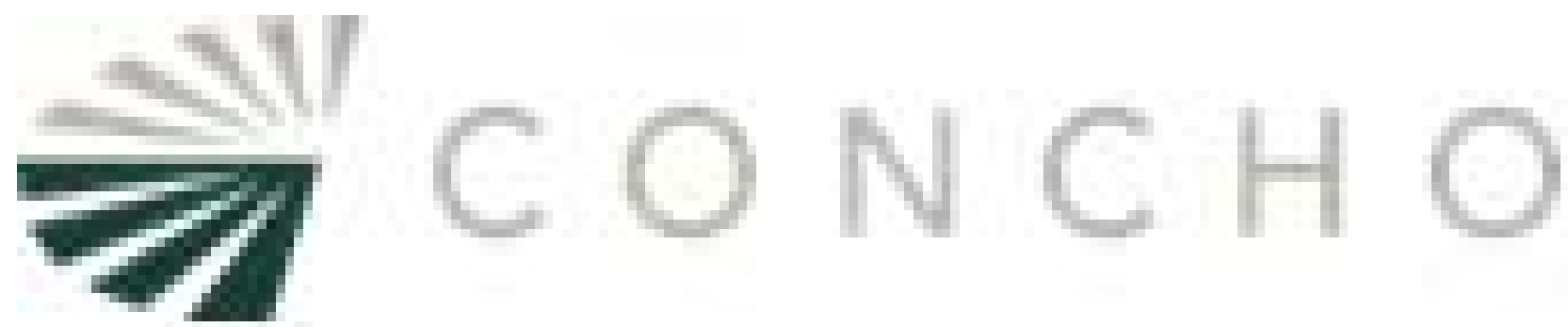
## Survey Report

<b>Company:</b>	NORTHERN DELAWARE BASIN	<b>Local Co-ordinate Reference:</b>	Well TOMAHAWK FEDERAL UNIT #714H
<b>Project:</b>	EDDY COUNTY, NM	<b>TVD Reference:</b>	KB=30' @ 3101.6usft (TBD)
<b>Site:</b>	ATLAS	<b>MD Reference:</b>	KB=30' @ 3101.6usft (TBD)
<b>Well:</b>	TOMAHAWK FEDERAL UNIT #714H	<b>North Reference:</b>	Grid
<b>Wellbore:</b>	OWB	<b>Survey Calculation Method:</b>	Minimum Curvature
<b>Design:</b>	PWP1	<b>Database:</b>	edm

### Plan Annotations

Measured Depth (usft)	Vertical Depth (usft)	Local Coordinates		Comment
		+N/-S (usft)	+E/-W (usft)	
2500	2500	0	0	Start Build 2.00
2750	2750	0	11	Start 6086.7 hold at 2750.0 MD
8837	8813	0	541	Start DLS 10.00 TFO -71.12
9720	9368	527	771	Start DLS 2.00 TFO -90.01
10,680	9369	1469	926	Start 9425.8 hold at 10679.6 MD
20,105	9374	10,895	887	TD at 20105.4

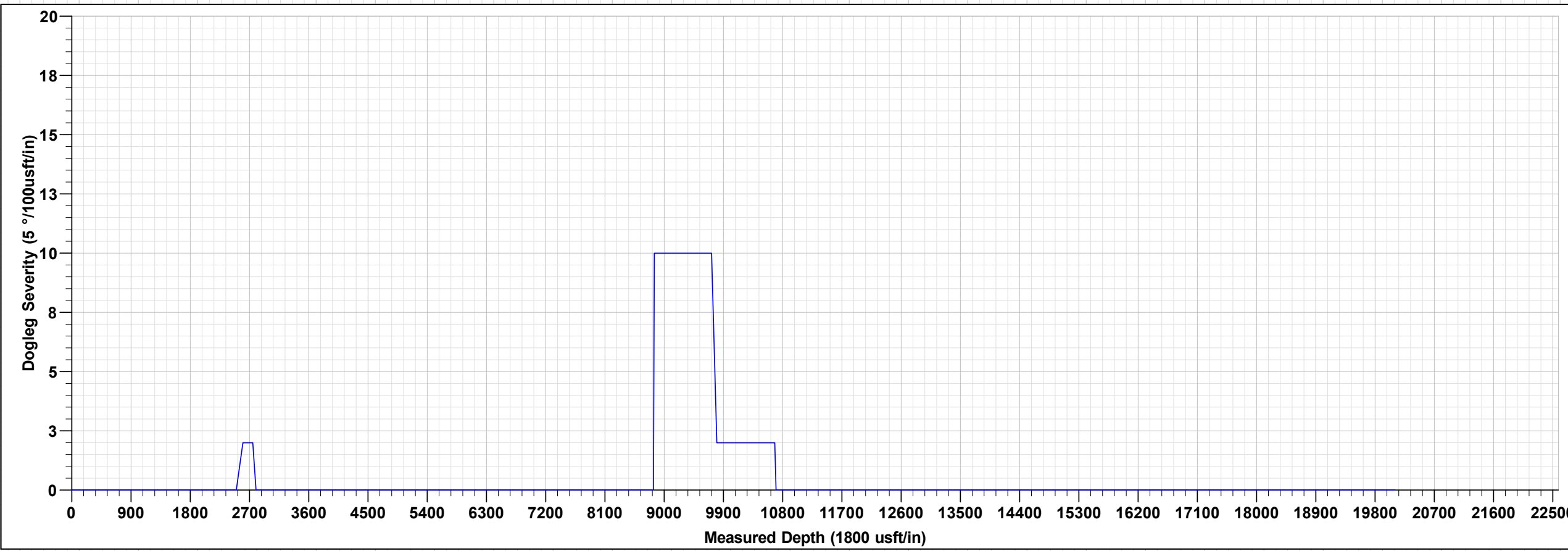
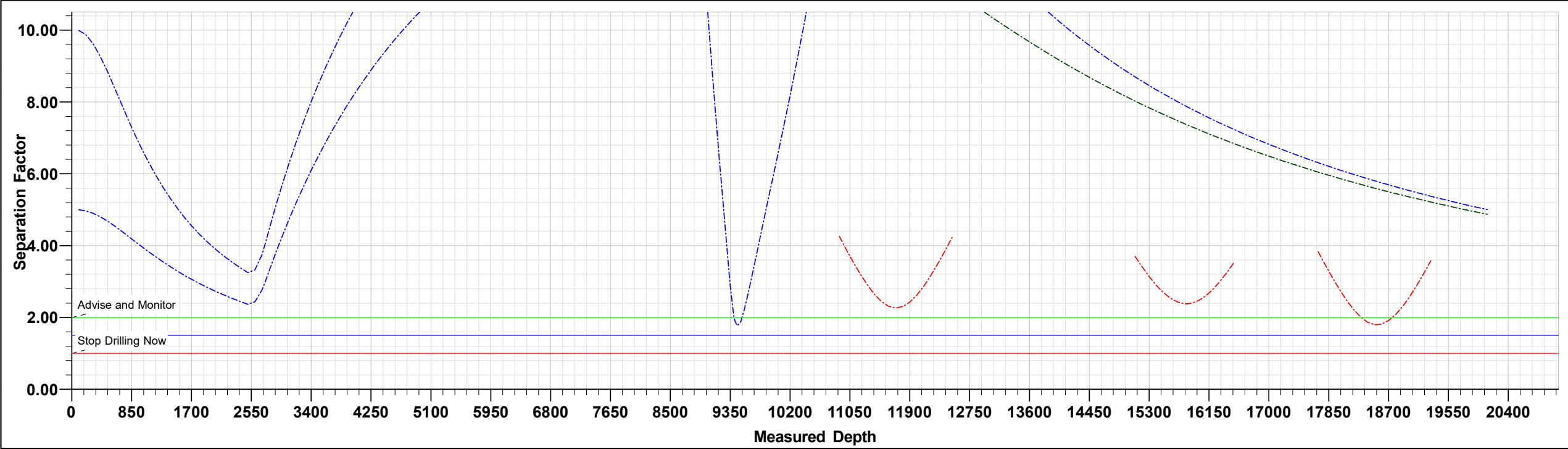
Checked By: _____	Approved By: _____	Date: _____
-------------------	--------------------	-------------



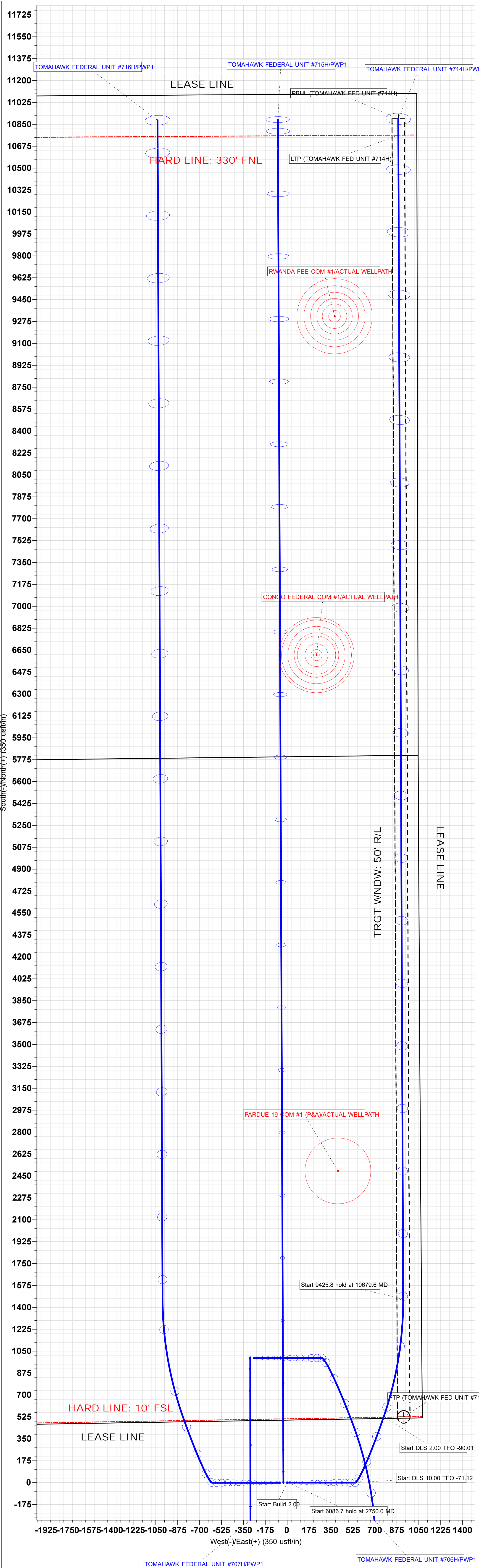
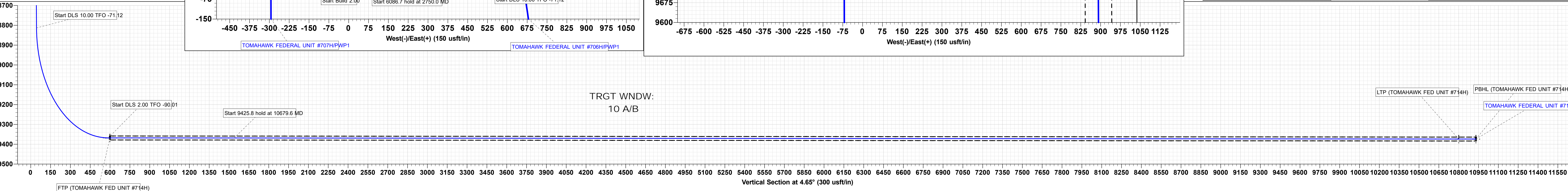
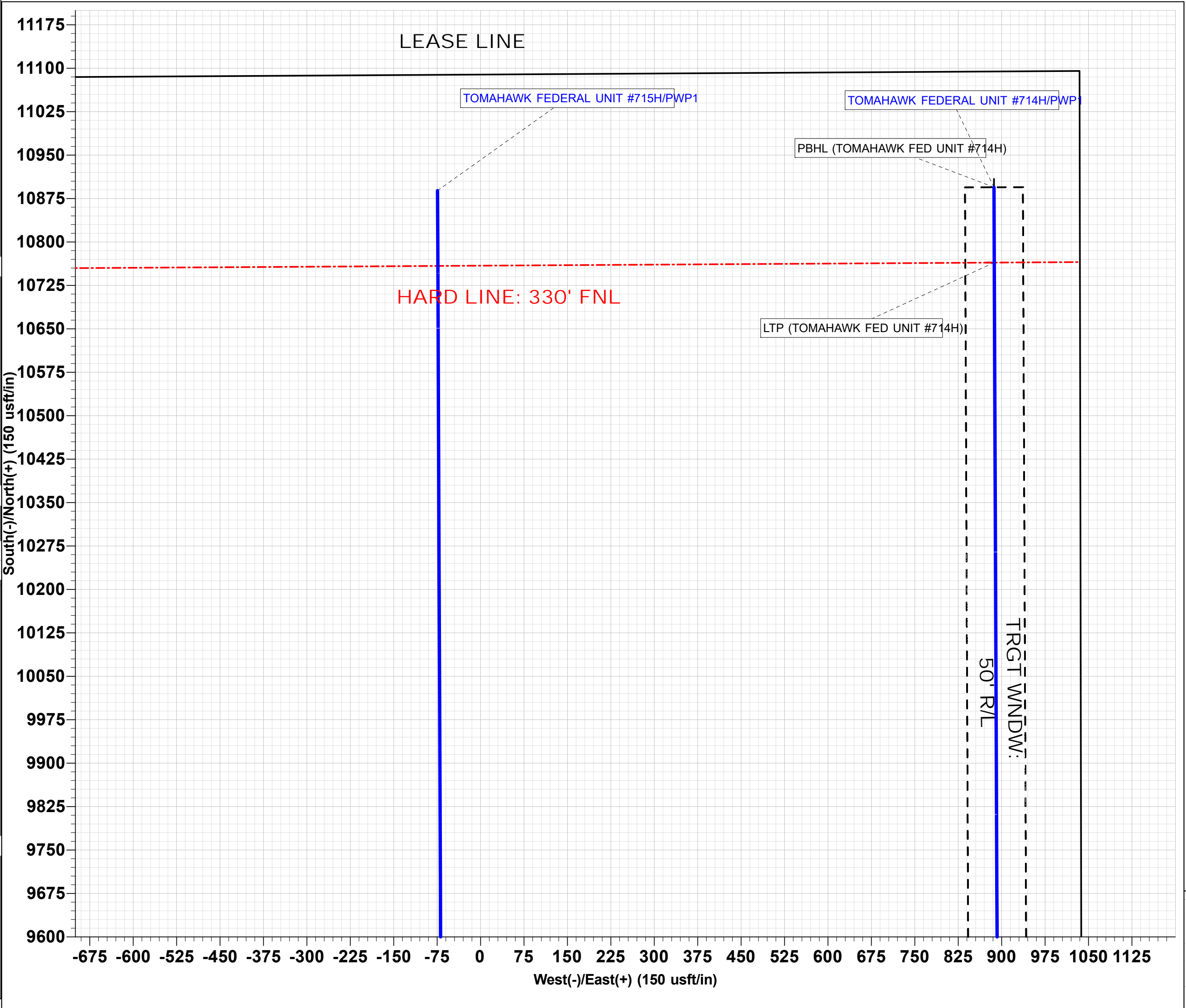
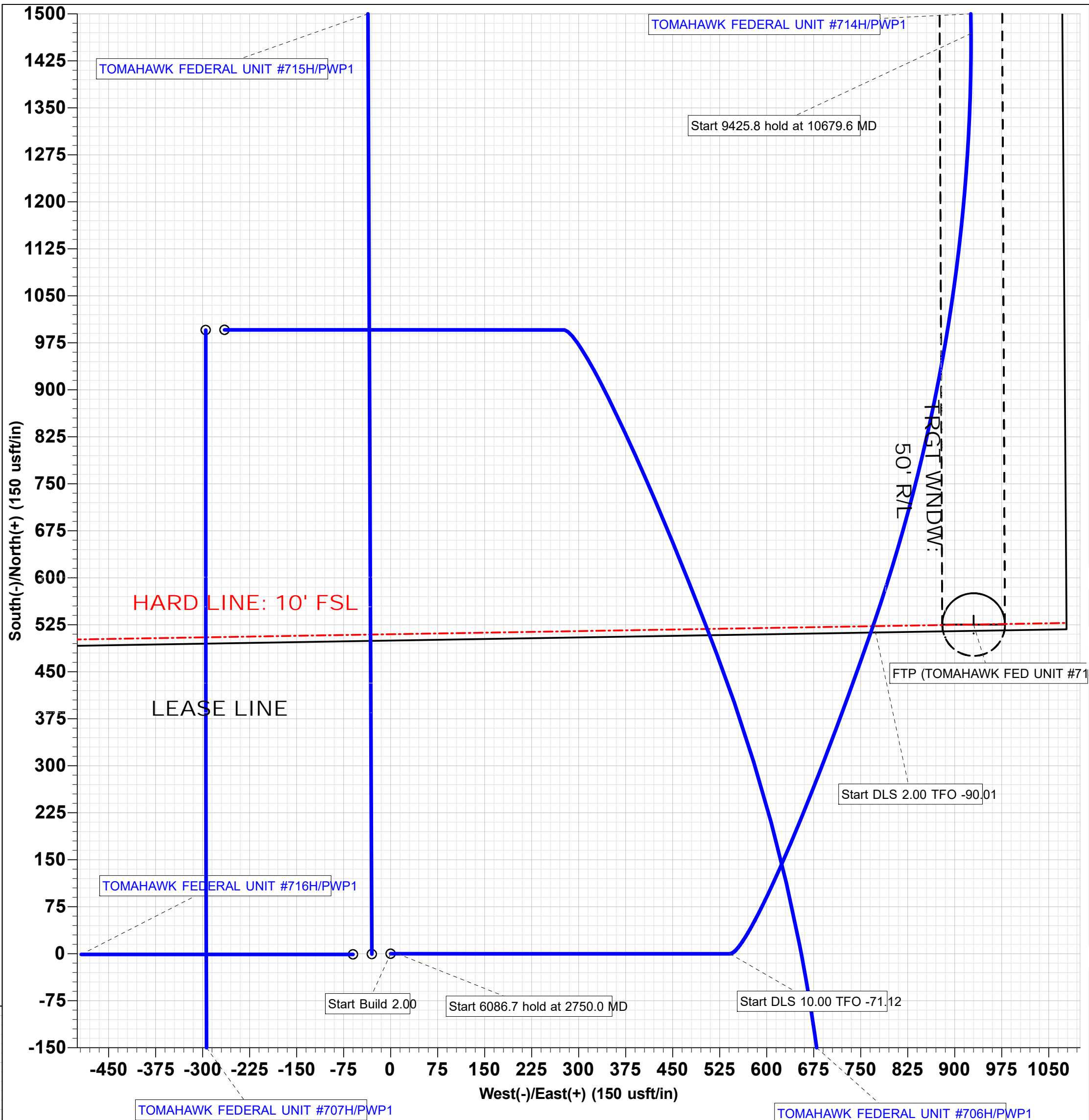
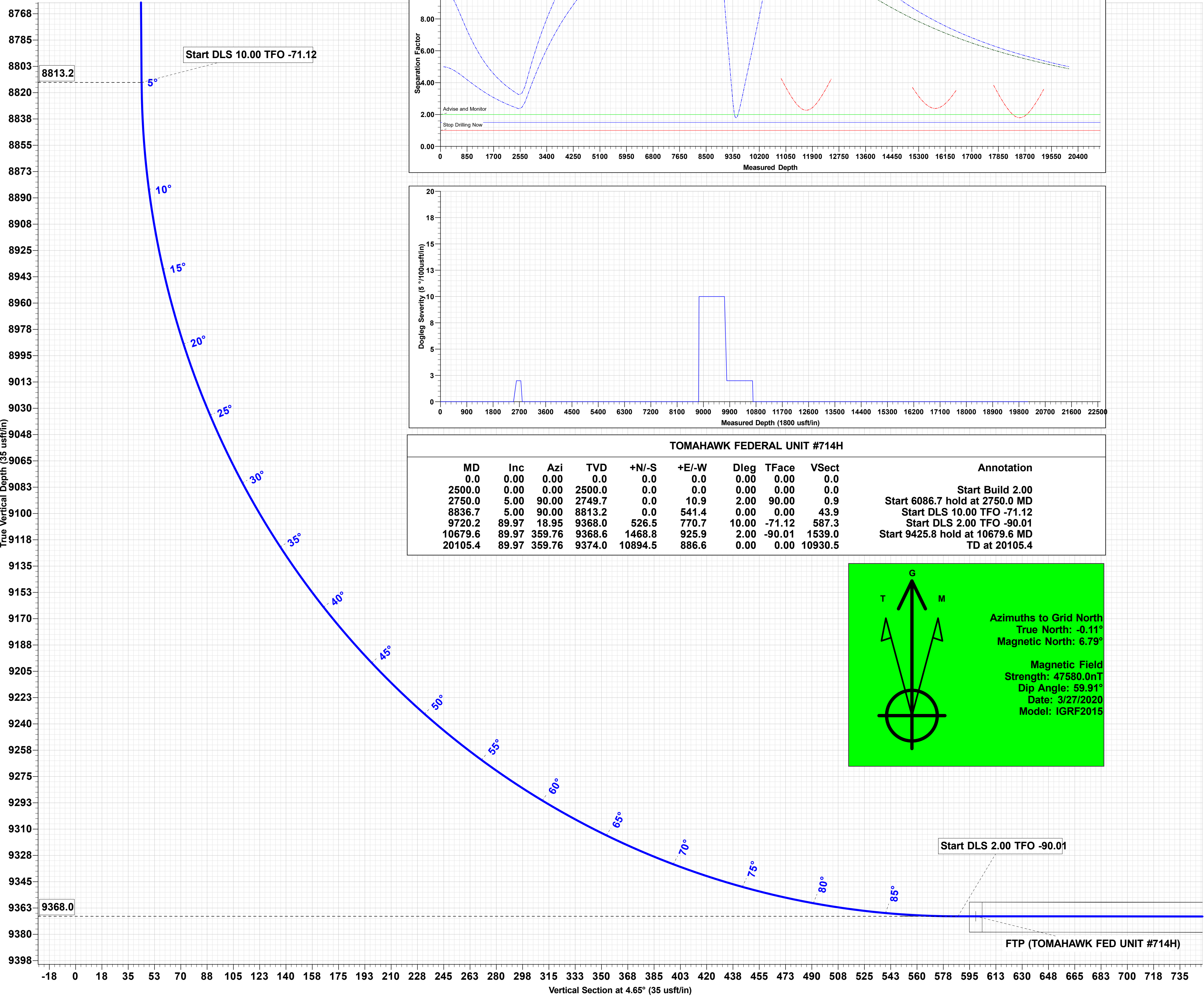
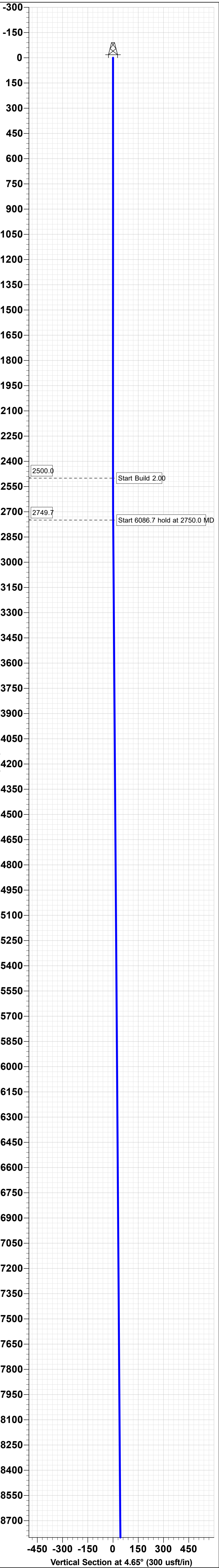
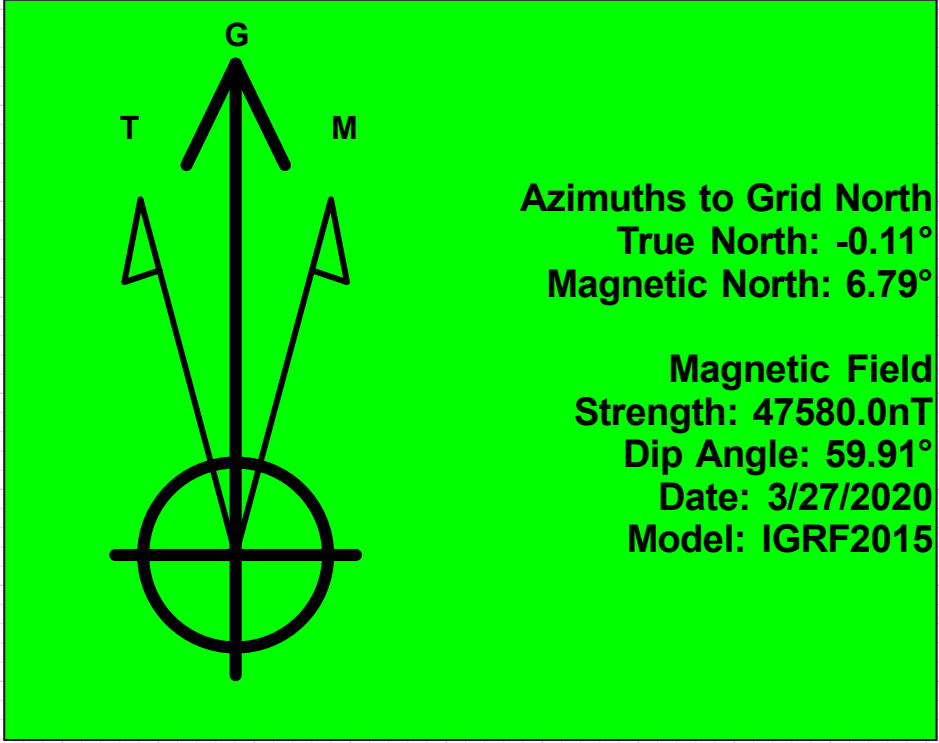
Project: EDDY COUNTY, NM  
Site: ATLAS  
Well: TOMAHAWK FEDERAL UNIT #714H  
Wellbore: OWB  
Design: PWP1  
GL: 3071.6  
KB=30' @ 3101.6usft (TBD)

WELL DETAILS: TOMAHAWK FEDERAL UNIT #714H						
+N/-S	+E/-W	Northing	Easting	Latitude	Longitude	
0.0	0.0	434523.10	565619.00	32° 11' 39.995 N	104° 7' 16.345 W	

DESIGN TARGET DETAILS							
Name	TVD	+N/-S	+E/-W	Northing	Easting	Latitude	Longitude
FTP (TOMAHAWK FED UNIT #714H)	9368.0	525.4	930.2	435048.50	566549.20	32° 11' 45.177 N	104° 7' 5.507 W
LTP (TOMAHAWK FED UNIT #714H)	9374.0	10764.5	887.2	445287.60	566506.20	32° 13' 26.507 N	104° 7' 5.759 W
PBHL (TOMAHAWK FED UNIT #714H)	9374.0	10894.5	886.6	445417.60	566505.60	32° 13' 27.794 N	104° 7' 5.773 W



TOMAHAWK FEDERAL UNIT #714H										
MD	Inc	Azi	TVD	+N/-S	+E/-W	Dleg	TFace	VSec	Annotation	
0.0	0.00	0.00	0.0	0.0	0.0	0.00	0.00	0.0	Start Build 2.00	
2500.0	0.00	0.00	2500.0	0.0	0.0	0.00	0.00	0.0	Start DLS 10.00 TFO -71.12	
2750.0	5.00	90.00	2749.7	0.0	10.9	2.00	90.00	0.9	Start 6086.7 hold at 2750.0 MD	
8836.7	5.00	90.00	8813.2	0.0	541.4	0.00	0.00	43.9	Start DLS 2.00 TFO -90.01	
9720.2	89.97	18.95	9368.0	526.5	770.7	10.00	-71.12	587.3	Start DLS 10.00 TFO -71.12	
10679.6	89.97	359.76	9368.6	1468.8	925.9	2.00	-90.01	1539.0	Start 9425.8 hold at 10679.6 MD	
20105.4	89.97	359.76	9374.0	10894.5	886.6	0.00	0.00	10930.5	TD at 20105.4	



COG Operating LLC

Rig Plat & Closed Loop Equipment Diagram

Well pad will be 400' X 400'  
with cellar in center of pad

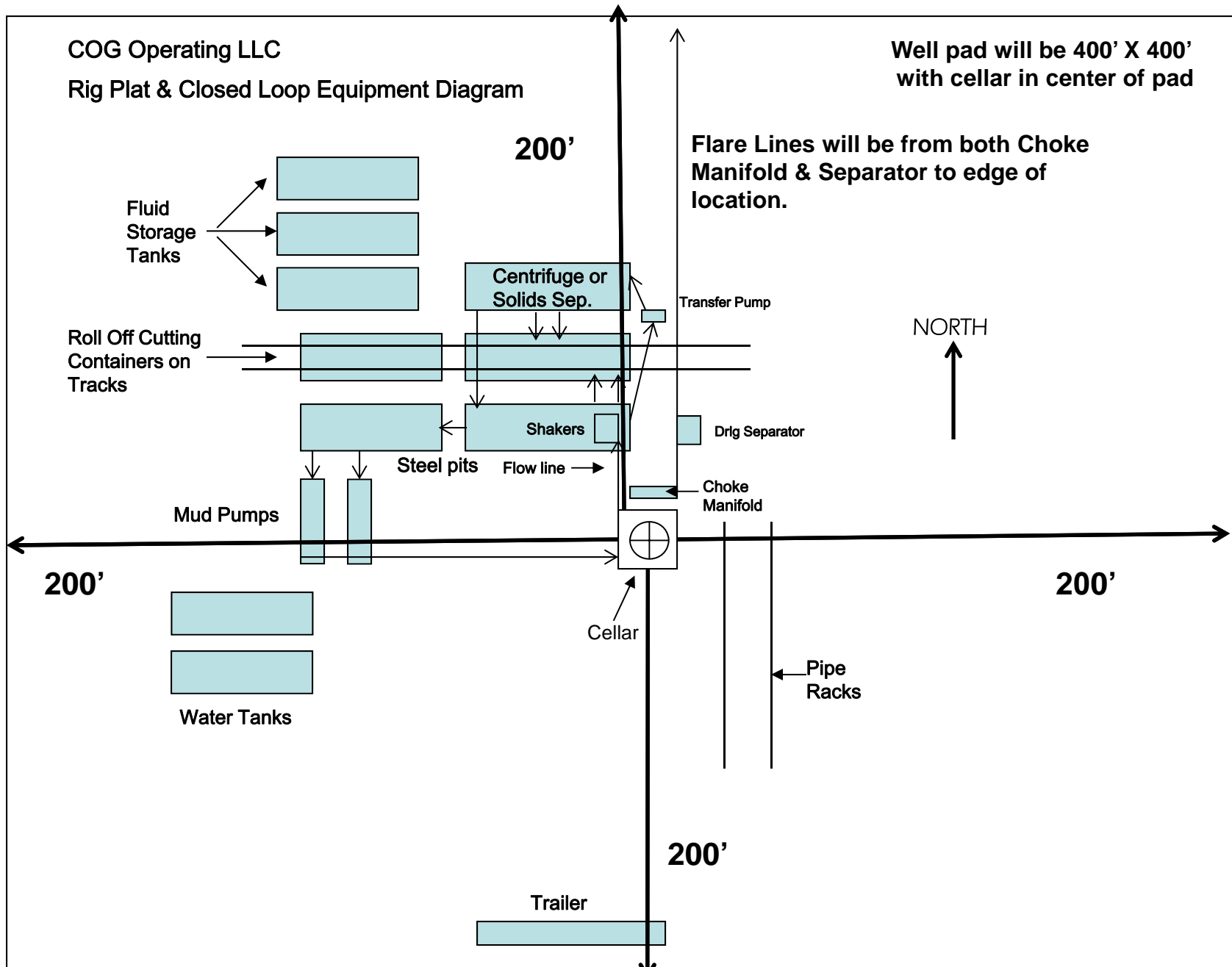


Exhibit 1

"I further certify that COG will comply with Rule 19.15.17  
NMAC by using a Closed Loop System."