

Table with 2 columns: Location Name, Coordinates. Rows include NAD 83 (SURFACE HOLE LOCATION), NAD 27 (SURFACE HOLE LOCATION), and STATE PLANE NAD 83 (N.M. EAST).

Table with 2 columns: Location Name, Coordinates. Rows include NAD 83 (BHL/LTP).

District I
1625 N. French Dr., Hobbs, NM 88240
Phone: (575) 393-6161 Fax: (575) 393-0720
District II
811 S. First St., Artesia, NM 88210
Phone: (575) 748-1283 Fax: (575) 748-9720
District III
1000 Rio Brazos Road, Aztec, NM 87410
Phone: (505) 334-6178 Fax: (505) 334-6170
District IV
1220 S. St. Francis Dr., Santa Fe, NM 87505
Phone: (505) 476-3460 Fax: (505) 476-3462

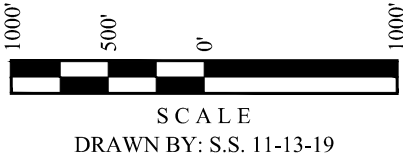
State of New Mexico
Energy, Minerals & Natural Resources Department
OIL CONSERVATION DIVISION
1220 South St. Francis Dr.
Santa Fe, NM 87505

Form C-102
Revised August 1, 2011
Submit one copy to appropriate
District Office

AMENDED REPORT

- = SURFACE HOLE LOCATION
- ◆ = LANDING POINT/FIRST TAKE POINT
- ⊙ = BOTTOM HOLE LOCATION/ LAST TAKE POINT
- ▲ = SECTION CORNER LOCATED
- △ = SECTION CORNER RE-ESTABLISHED. (Not Set on Ground.)

NOTE:
• Distances referenced on plat to section lines are perpendicular.
• Basis of Bearing is a Transverse Mercator Projection with a Central Meridian of W103°53'00"



WELL LOCATION AND ACREAGE DEDICATION PLAT

Table with 3 columns: API Number, Pool Code, Pool Name, Property Code, Property Name, Well Number, OGRID No., Operator Name, Elevation.

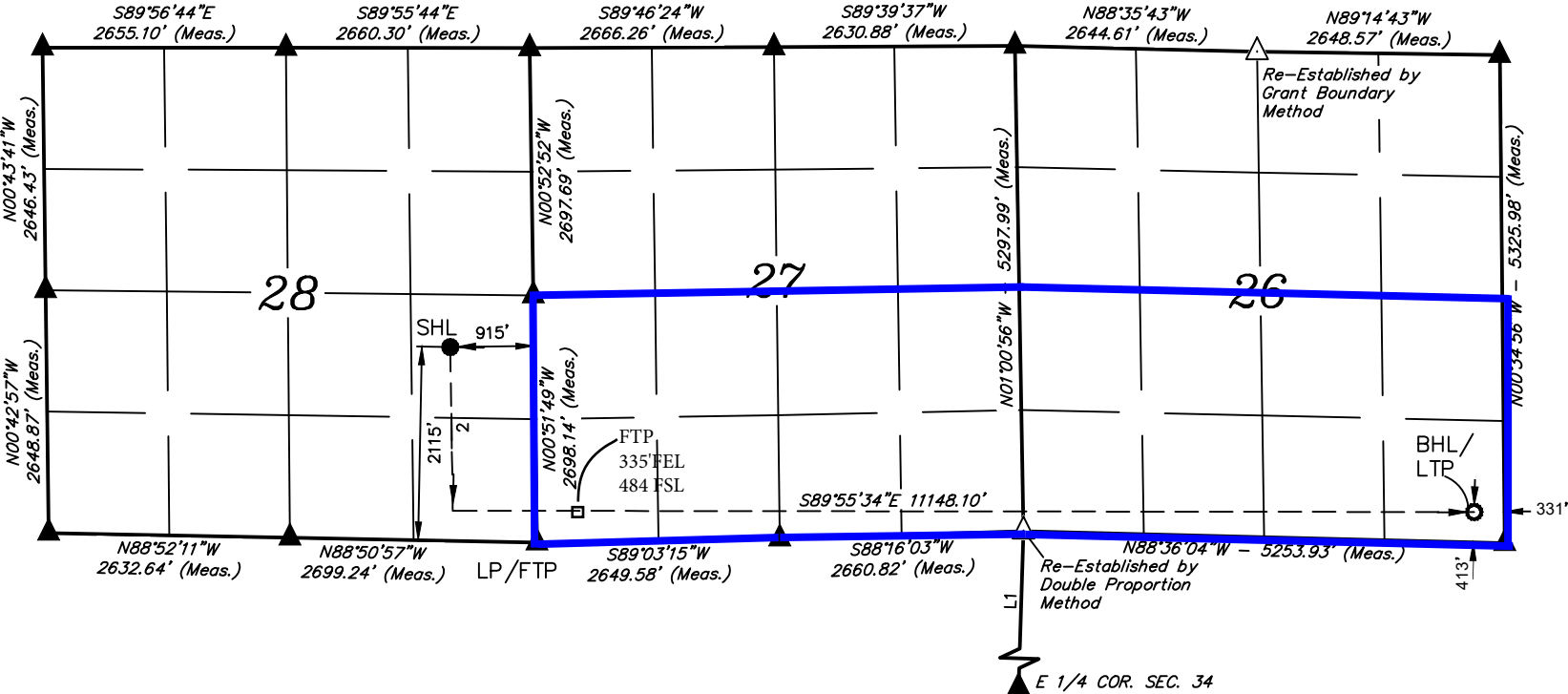
Surface Location

Table with 10 columns: UL or lot no., Section, Township, Range, Lot Idn, Feet from the, North/South line, Feet from the, East/West line, County.

Bottom Hole Location If Different From Surface

Table with 10 columns: UL or lot no., Section, Township, Range, Lot Idn, Feet from the, North/South line, Feet from the, East/West line, County.

No allowable will be assigned to this completion until all interests have been consolidated or a non-standard unit has been approved by the division.



OPERATOR CERTIFICATION

I hereby certify that the information contained herein is true and complete to the best of my knowledge and belief, and that this organization either owns a working interest or unleased mineral interest in the land including the proposed bottom hole location or has a right to drill this well at this location pursuant to a contract with an owner of such a mineral or working interest, or to a voluntary pooling agreement or a compulsory pooling order heretofore entered by the division.

Fatima Vasquez 01/21/2021
Signature Date

Fatima Vasquez
Printed Name

fvasquez@cimarex.com
E-mail Address

SURVEYOR CERTIFICATION

I hereby certify that the well location shown on this plat was plotted from field notes of actual surveys made by me or under my supervision, and that the same is true and correct to the best of my belief.

November 02, 2019

Date of Survey
Signature and Seal of Professional Surveyor:



Certificate Number: