

District I
1625 N. French Dr., Hobbs, NM 88240
Phone: (575) 393-6161 Fax: (575) 393-0720
District II
811 S. First St., Artesia, NM 88210
Phone: (575) 748-1283 Fax: (575) 748-9720
District III
1000 Rio Brazos Road, Aztec, NM 87410
Phone: (505) 334-6178 Fax: (505) 334-6170
District IV
1220 S. St. Francis Dr., Santa Fe, NM 87505
Phone: (505) 476-3460 Fax: (505) 476-3462

State of New Mexico
Energy, Minerals & Natural Resources Department
OIL CONSERVATION DIVISION
1220 South St. Francis Dr.
Santa Fe, NM 87505

Form C-102
Revised August 1, 2011

Submit one copy to
appropriate District Office

☐ AMENDED REPORT

WELL LOCATION AND ACREAGE DEDICATION PLAT

¹ API Number 30-015-46819	² Pool Code 49622 & 65010	³ Pool Name [49622] PARKWAY;BONE SPRING ; [65010] WINCHESTER;BONE SPRING
⁴ Property Code	⁵ Property Name URANINITE 32-33 STATE FED COM	⁶ Well Number 334H
⁷ OGRID No. 6137	⁸ Operator Name DEVON ENERGY PRODUCTION COMPANY, L.P.	⁹ Elevation 3290.5'

¹⁰ Surface Location

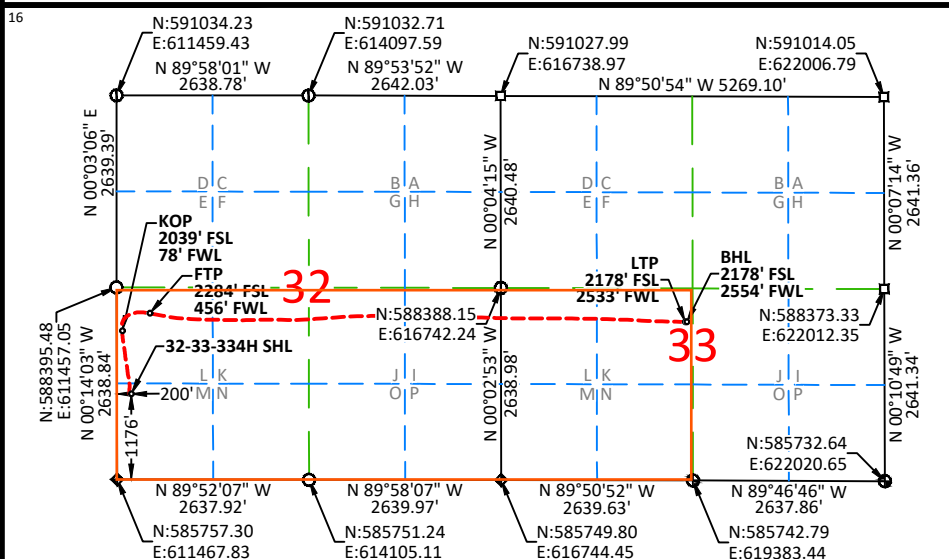
UL or lot no. M	Section 32	Township 19-S	Range 29-E	Lot Idn	Feet from the 1176	North/South line SOUTH	Feet from the 200	East/West line WEST	County EDDY
--------------------	---------------	------------------	---------------	---------	-----------------------	---------------------------	----------------------	------------------------	----------------

¹¹ Bottom Hole Location If Different From Surface

UL or lot no. K	Section 33	Township 19-S	Range 29-E	Lot Idn	Feet from the 2178	North/South line SOUTH	Feet from the 2554	East/West line WEST	County EDDY
--------------------	---------------	------------------	---------------	---------	-----------------------	---------------------------	-----------------------	------------------------	----------------

¹² Dedicated Acres 480	¹³ Joint or Infill Infill	¹⁴ Consolidation Code	¹⁵ Order No.
--------------------------------------	---	----------------------------------	-------------------------

No allowable will be assigned to this completion until all interests have been consolidated or a non-standard unit has been approved by the division.



URANINITE 32-33 STATE FED COM 334H ELEV: 3290.5' LAT: 32.613321° LON: -104.104935° N: 586932.60 E: 611662.98	KICK OFF POINT N: 587796.09 E: 611537.76 LAT: 32.615695° LON: -104.105336°	FIRST TAKE POINT N: 588039.25 E: 611914.74 LAT: 32.616362° LON: -104.104110°	LAST TAKE POINT N: 587920.67 E: 619274.93 LAT: 32.615990° LON: -104.080206°	BOTTOM HOLE LOCATION N: 587920.09 E: 619295.92 LAT: 32.615988° LON: -104.080138°
--	---	---	--	---

NOTES:

- BEARINGS SHOWN ARE GRID BASED ON THE NEW MEXICO STATE PLANE EAST ZONE COORDINATE SYSTEM (3001), NAD 83 (2011), BASED FROM GPS OBSERVATIONS, OCCUPYING A WHS CONTROL POINT (5/8" REBAR), LOCATED AT NORTH: 589022.345, EAST: 613596.863, ELEVATION: 3316.2, DETERMINED BY AN OPUS SOLUTION ON MARCH 27TH, 2019.
- DISTANCES DEPICTED HEREON ARE REPORTED AS GROUND DISTANCE IN US SURVEY FEET USING A COMBINED SCALE FACTOR OF 1.000239925
- DRILL PATH INFORMATION HAS BEEN PROVIDED TO WHS BY THE CLIENT.
- ELEVATIONS SHOWN HEREON ARE EXISTING GROUND ELEVATIONS AND ARE OF NAVD 88 COMPUTED USING GEIOD 12B.
- SURFACE HOLE LOCATIONS (SHL) ARE DERIVED FROM THE ORIGINALLY PLATTED WELL LOCATIONS.

LEGEND:

- KOP, FTP, LTP AND BHL
- AS-DRILLED DRILL PATH
- USGLO BRASS CAP
- ⊙ NO.4 REBAR
- ◆ IRON PIPE
- STONE

¹⁷ OPERATOR CERTIFICATION

I hereby certify that the information contained herein is true and complete to the best of my knowledge and belief, and that this organization either owns a working interest or unleased mineral interest in the land including the proposed bottom hole location or has a right to drill this well at this location pursuant to a contract with an owner of such a mineral or working interest, or to a voluntary pooling agreement or a compulsory pooling order heretofore entered by the division.

Chelsey Green 11/12/20
Signature Date

Chelsey Green

Printed Name

chelsey.green@dvn.com
E-mail Address

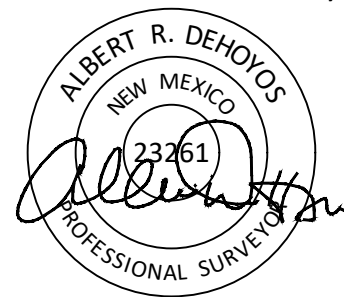
¹⁸ SURVEYOR CERTIFICATION

I hereby certify that the well location shown on this plat was plotted from field notes of actual surveys made by me or under my supervision, and that the same is true and correct to the best of my belief.

11/06/2020

Date of Survey

Signature and Seal of Professional Surveyor:



Certificate No. 23261 Albert Dehoyos
Drawn by: TMW Checked by: ARD Date: 11/05/2020

Intent ☐ As Drilled ☒

API # 30-015-46819		
Operator Name: DEVON ENERGY PRODUCTION COMPANY, L.P.	Property Name: URANINITE 32-33 STATE FED COM	Well Number 334H

Kick Off Point (KOP)

UL L	Section 32	Township 19-S	Range 29-E	Lot	Feet 2039	From N/S SOUTH	Feet 78	From E/W WEST	County EDDY
Latitude 32.615695°					Longitude -104.105336°			NAD 83	

First Take Point (FTP)

UL L	Section 32	Township 19-S	Range 29-E	Lot	Feet 2284	From N/S SOUTH	Feet 456	From E/W WEST	County EDDY
Latitude 32.616362°					Longitude -104.104110°			NAD 83	

Last Take Point (LTP)

UL K	Section 33	Township 19-S	Range 29-E	Lot	Feet 2178	From N/S SOUTH	Feet 2533	From E/W WEST	County EDDY
Latitude 32.615990°					Longitude -104.080206°			NAD 83	

Is this well the defining well for the Horizontal Spacing Unit? ☐

Is this well an infill well? ☐

If infill is yes provide API if available, Operator name and well number for Defining well for Horizontal Spacing Unit.

API # 30-015-46820		
Operator Name: DEVON ENERGY PRODUCTION CO, LP	Property Name: URANINITE 32-33 STATE FED COM	Well Number 335H

KZ 06/29/2018