

District I
1625 N. French Dr., Hobbs, NM 88240
Phone: (575) 393-6161 Fax: (575) 393-0720
District II
811 S. First St., Artesia, NM 88210
Phone: (575) 748-1283 Fax: (575) 748-9720
District III
1000 Rio Brazos Road, Aztec, NM 87410
Phone: (505) 334-6178 Fax: (505) 334-6170
District IV
1220 S. St. Francis Dr., Santa Fe, NM 87505
Phone: (505) 476-3460 Fax: (505) 476-3462

State of New Mexico
Energy, Minerals & Natural Resources
Department
OIL CONSERVATION DIVISION
1220 South St. Francis Dr.
Santa Fe, NM 87505

☐ AMENDED REPORT

WELL LOCATION AND ACREAGE DEDICATION PLAT

¹ API Number 30-015-47098	² Pool Code 15011	³ Pool Name CULEBRA BLUFF; BONE SPRING, SOUTH
⁴ Property Code 326434	⁵ Property Name RAY STATE COM	⁶ Well Number 113H
⁷ OGRID No. 228937	⁸ Operator Name MATADOR PRODUCTION COMPANY	⁹ Elevation 2963'

¹⁰Surface Location

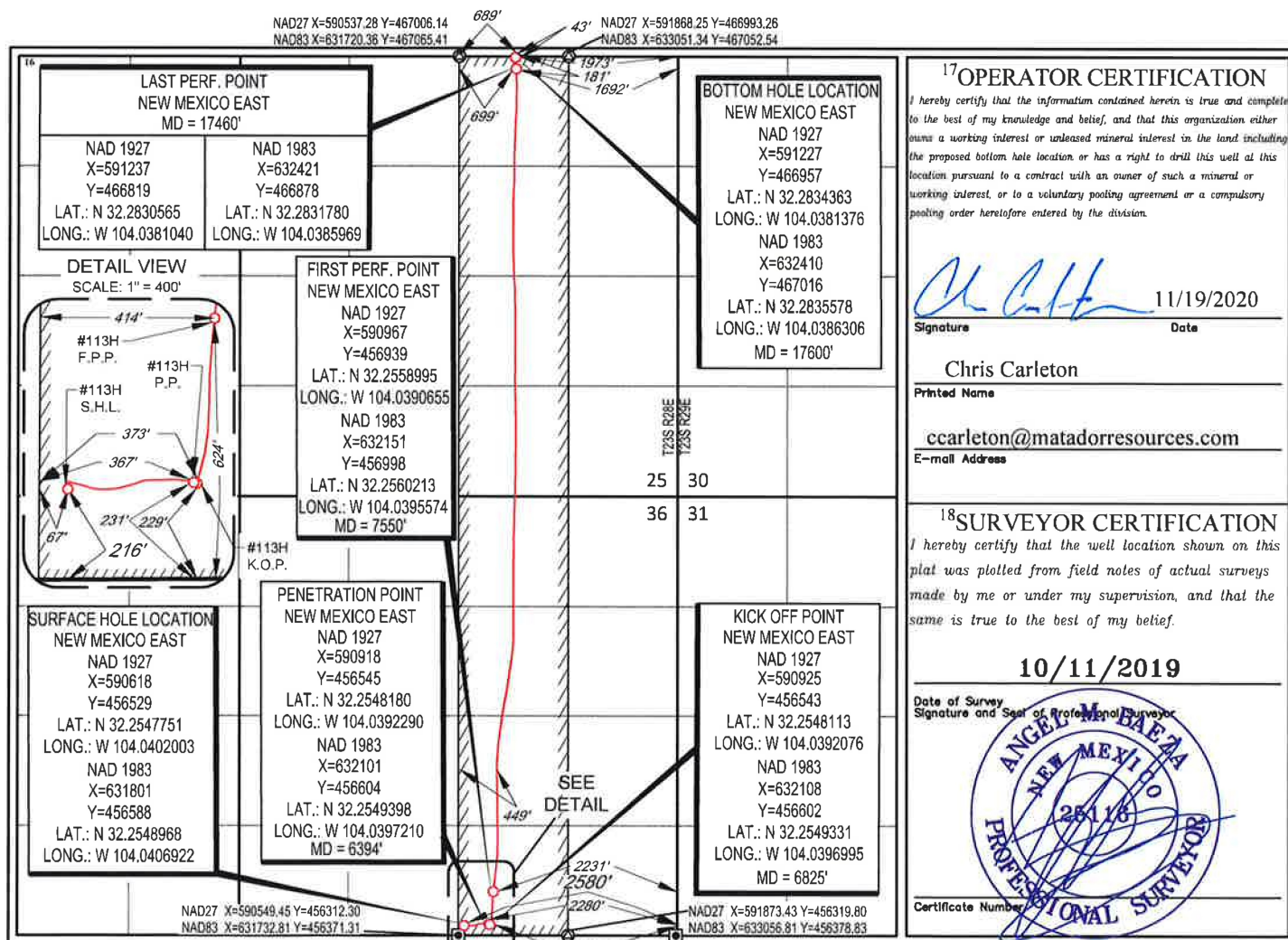
UL or lot no.	Section	Township	Range	Lot Idn	Feet from the	North/South line	Feet from the	East/West line	County
0	36	23-S	28-E	-	216'	SOUTH	2580'	EAST	EDDY

¹¹Bottom Hole Location If Different From Surface

UL or lot no.	Section	Township	Range	Lot Idn	Feet from the	North/South line	Feet from the	East/West line	County
B	25	23-S	28-E	-	43'	NORTH	1973'	EAST	EDDY

¹² Dedicated Acres 320	¹³ Joint or Infill	¹⁴ Consolidation Code	¹⁵ Order No.
--------------------------------------	-------------------------------	----------------------------------	-------------------------

No allowable will be assigned to this completion until all interests have been consolidated or a non-standard unit has been approved by the division.



SCALE: 1" = 2000'

0' 1000' 2000'

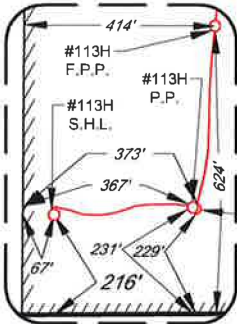
SECTION 36, TOWNSHIP 23-S, RANGE 28-E, N.M.P.M.
EDDY COUNTY, NEW MEXICO

FND. BRASS CAP,
U.S. G.L.O. SUR.



LAST PERF. POINT
NEW MEXICO EAST
NAD 1927
X=591237
Y=466819
LAT.: N 32.2830565
LONG.: W 104.0381040
NAD 1983
X=632421
Y=466878
LAT.: N 32.2831780
LONG.: W 104.0385969
MD = 17460'

DETAIL VIEW
SCALE: 1" = 400'



SURFACE LOCATION
NEW MEXICO EAST
NAD 1927
X=590618
Y=456529
LAT.: N 32.2547751
LONG.: W 104.0402003
NAD 1983
X=631801
Y=456588
LAT.: N 32.2548968
LONG.: W 104.0406922

PENETRATION POINT
NEW MEXICO EAST
NAD 1927
X=590918
Y=456545
LAT.: N 32.2548180
LONG.: W 104.0392290
NAD 1983
X=632101
Y=456604
LAT.: N 32.2549398
LONG.: W 104.0397210
MD = 6394'

FIRST PERF. POINT
NEW MEXICO EAST
NAD 1927
X=590967
Y=456939
LAT.: N 32.2558995
LONG.: W 104.0390655
NAD 1983
X=632151
Y=456998
LAT.: N 32.2560213
LONG.: W 104.0395574
MD = 7550'

BOTTOM HOLE LOCATION
NEW MEXICO EAST
NAD 1927
X=591227
Y=466957
LAT.: N 32.2834363
LONG.: W 104.0381376
NAD 1983
X=632410
Y=467016
LAT.: N 32.2835578
LONG.: W 104.0386306
MD = 17600'

KICK OFF POINT
NEW MEXICO EAST
NAD 1927
X=590925
Y=456543
LAT.: N 32.2548113
LONG.: W 104.0392076
NAD 1983
X=632108
Y=456602
LAT.: N 32.2549331
LONG.: W 104.0396995
MD = 6825'

FND. BRASS CAP,
U.S. G.L.O. SUR.
1942

FND. BRASS CAP,
U.S. G.L.O. SUR.
1942

SEE
DETAIL

FND. BRASS CAP,
U.S. G.L.O. SUR.
1942

LEASE NAME & WELL NO.: RAY STATE COM #113H
SECTION 36 TWP 23-S RGE 28-E SURVEY N.M.P.M.
COUNTY EDDY STATE NM ELEVATION 2963'
DESCRIPTION 216' FSL & 2580' FEL



Angel M. Baeza, P.S. No. 25116
NOVEMBER 16, 2020



TOPOGRAPHIC
LOYALTY INNOVATION LEGACY
1400 EVERMAN PARKWAY, Ste. 146 • FT. WORTH, TEXAS 76140
TELEPHONE: (817) 744-7512 • FAX (817) 744-7554
2803 NORTH BIG SPRING • MIDLAND, TEXAS 79705
TELEPHONE: (432) 682-1653 OR (800) 767-1653 • FAX (432) 682-1743
WWW.TOPOGRAPHIC.COM

RAY STATE COM #113H
AS-COMPLETED

REVISION:

NOTES:

1. ORIGINAL DOCUMENT SIZE: 8.5" X 11"
2. ALL BEARINGS, DISTANCES, AND COORDINATE VALUES CONTAINED HEREIN ARE GRID BASED UPON THE NEW MEXICO COORDINATE SYSTEM OF 1983, EAST ZONE, U.S. SURVEY FEET.
3. THIS WELL LOCATION SHOWN HEREON HAS BEEN SURVEYED ON THE GROUND UNDER MY SUPERVISION AND PREPARED ACCORDING TO THE EVIDENCE FOUND AT THE TIME OF SURVEY, AND DATA PROVIDED BY MATADOR PRODUCTION COMPANY. THIS CERTIFICATION IS MADE AND LIMITED TO THOSE PERSONS OR ENTITIES SHOWN ON THE FACE OF THIS PLAT AND IS NON-TRANSFERABLE. THIS SURVEY IS CERTIFIED FOR THIS TRANSACTION ONLY.

DATE: 11/16/20
FILE: AD_RAY_STATE_COM_113H
DRAWN BY: A.M.D.
SHEET: 1 OF 1



3335 Pollok Drive
Conroe, Texas 77303
936.442.2500 (office)
www.msdir.com

MS Directional LLC Survey Data Certification

MS Directional LLC Job Number: MSMO-77405
Survey Type: MWD
Operating Company: Matador Resources
Well Name and Number: Ray State Com 113H
Location: Eddy, New Mexico
API Number: 30-015-47098
Tie In Depth: 2661.00
Surveyed Depths: 2788.00' - 17543.00'
Projected TD Survey: 17600.00'
Dates Performed: 05/17/2020 - 06/20/2020

To the best of my knowledge, I certify the following:

1. The data is true, correct and complete and within the limitations of the tool set forth by MS Directional LLC
2. I am authorized and qualified to make this report; and
3. I have reviewed this report and find it conforms to the principles and procedures as set forth by MS Directional LLC

MWD Surveyor Name: Charlie Salvaggio

MWD Operations Manager: Charles Davis

Signature:

A handwritten signature in black ink, appearing to read "CWD", written over a light gray horizontal line.

Date: 06/25/2020

Email: charles.davis@msdir.com



Matador Resources
Eddy County, New Mexico (NAD 27)
30-015-47098
Ray State Com 113H
Wellbore 1

MS MWD
Certified Survey Report
25 June 2020



Field	Eddy County, New Mexico (NAD 27) - Matador Resources		
CRS	US-SPC27-EXACT / New Mexico East 3001		
Apply Scale Factor	NO	Scale Factor	0.9999090909
System Datum	Mean Sea Level	Depth Datum->MSL	2991.49 UsFt

Well	Ray State Com 113H		
Local North	-0.00 UsFt	Local East	0.00 UsFt
Map Northing	456529.00 US survey foot	Map Easting	590618.00 US survey foot
Latitude	32° 15' 17.190" N	Longitude	104° 2' 24.718" W
Depth Datum	WELL	Datum Elevation	2991.50 UsFt
GL Elevation	2963.00 UsFt		
Grid Convergence	0.156		

Well bore	Ray State Com 113H - Wellbore 1		
Magnetic Model	User defined	Date	05/06/2020
Total Field (nT)	47799.30	Dip Angle (°)	59.967
Declination (°)	6.950		
VS Origin	User Defined	VS Azimuth	0.01
VS Origin NS	0.00 UsFt	VS Origin EW	0.00 UsFt

Survey Program	MS MWD		
Depth From (UsFt)	Depth To (UsFt)	Survey	Survey Tool
0.00	2661.00	VES Gyro	VESSE_GYRO_DROP
2661.00	17600.00	MS MWD	MWD+HRGM

Survey Report

MD	Inc	Azi	TVD	NS	EW	VS	DLS	BR	TR
UsFt	°	°	UsFt	UsFt	UsFt	UsFt	(°/100 UsFt)	(°/100 UsFt)	(°/100 UsFt)
2661.00	4.11	97.78	2658.29	0.49	71.17	0.50	0.00	0.00	0.00 Tie In
2788.00	3.10	91.20	2785.04	-0.20	79.11	-0.18	0.86	-0.80	-5.18
2883.00	3.20	91.90	2879.89	-0.34	84.33	-0.33	0.11	0.11	0.74
2979.00	3.10	89.80	2975.75	-0.42	89.60	-0.40	0.16	-0.10	-2.19
3075.00	3.00	88.00	3071.61	-0.32	94.71	-0.31	0.14	-0.10	-1.88
3170.00	2.90	84.10	3166.49	0.01	99.59	0.03	0.24	-0.11	-4.11
3266.00	2.90	82.90	3262.36	0.56	104.41	0.58	0.06	0.00	-1.25
3361.00	4.40	81.80	3357.17	1.38	110.40	1.40	1.58	1.58	-1.16
3457.00	4.90	79.80	3452.85	2.63	118.08	2.65	0.55	0.52	-2.08
3552.00	4.20	77.40	3547.55	4.11	125.47	4.13	0.76	-0.74	-2.53
3648.00	3.80	76.20	3643.32	5.63	131.99	5.66	0.43	-0.42	-1.25
3743.00	3.60	75.00	3738.12	7.15	137.93	7.18	0.23	-0.21	-1.26
3839.00	3.70	75.30	3833.93	8.72	143.84	8.75	0.11	0.10	0.31
3934.00	3.70	73.80	3928.73	10.35	149.75	10.38	0.10	0.00	-1.58
4030.00	3.40	70.20	4024.54	12.18	155.40	12.21	0.39	-0.31	-3.75
4126.00	3.10	70.90	4120.39	14.00	160.53	14.02	0.32	-0.31	0.73
4221.00	2.80	70.20	4215.26	15.62	165.14	15.65	0.32	-0.32	-0.74
4317.00	2.80	68.40	4311.15	17.28	169.53	17.31	0.09	0.00	-1.88
4412.00	2.80	68.80	4406.04	18.97	173.85	19.00	0.02	0.00	0.42
4508.00	3.70	81.30	4501.88	20.29	179.10	20.32	1.19	0.94	13.02
4603.00	4.40	85.20	4596.64	21.06	185.76	21.09	0.79	0.74	4.11
4699.00	4.30	85.80	4692.37	21.63	193.02	21.66	0.11	-0.10	0.63
4794.00	4.10	85.40	4787.11	22.16	199.95	22.20	0.21	-0.21	-0.42
4890.00	4.00	88.70	4882.87	22.51	206.72	22.55	0.26	-0.10	3.44
4986.00	3.80	90.90	4978.65	22.54	213.25	22.58	0.26	-0.21	2.29
5081.00	3.60	92.70	5073.45	22.35	219.38	22.39	0.24	-0.21	1.89
5177.00	3.20	88.60	5169.28	22.27	225.07	22.31	0.49	-0.42	-4.27
5272.00	2.80	86.90	5264.15	22.46	230.03	22.50	0.43	-0.42	-1.79
5368.00	2.60	87.60	5360.05	22.68	234.55	22.72	0.21	-0.21	0.73
5463.00	4.30	88.80	5454.87	22.85	240.26	22.89	1.79	1.79	1.26
5559.00	4.70	89.40	5550.57	22.96	247.80	23.01	0.42	0.42	0.63
5654.00	4.30	91.10	5645.28	22.94	255.25	22.98	0.44	-0.42	1.79
5750.00	4.20	91.30	5741.02	22.79	262.36	22.83	0.11	-0.10	0.21
5845.00	4.20	95.10	5835.76	22.40	269.30	22.45	0.29	0.00	4.00
5941.00	3.80	97.00	5931.53	21.70	275.96	21.75	0.44	-0.42	1.98
6037.00	3.50	99.70	6027.33	20.82	282.01	20.87	0.36	-0.31	2.81
6132.00	3.30	101.90	6122.17	19.77	287.54	19.82	0.25	-0.21	2.32
6228.00	3.20	103.60	6218.01	18.57	292.85	18.62	0.14	-0.10	1.77
6323.00	2.80	106.00	6312.89	17.35	297.50	17.40	0.64	-0.63	2.53
6419.00	2.00	111.40	6408.81	16.14	301.15	16.19	0.66	-0.63	5.63
6515.00	1.40	121.50	6504.77	14.91	303.71	14.97	0.70	-0.63	10.52
6610.00	1.00	135.30	6599.75	13.72	305.28	13.77	0.52	-0.42	14.53
6706.00	0.80	154.90	6695.74	12.51	306.16	12.57	0.38	-0.21	20.42
6763.00	0.90	206.70	6752.73	11.75	306.13	11.81	1.31	0.18	90.88
6866.00	5.30	18.90	6855.61	15.54	307.30	15.59	6.01	4.27	167.18
6914.00	13.30	14.80	6902.94	22.98	309.44	23.04	16.71	16.67	-8.54
7009.00	21.60	16.30	6993.49	50.38	317.15	50.43	8.75	8.74	1.58
7105.00	27.40	12.90	7080.81	88.91	327.05	88.96	6.22	6.04	-3.54
7200.00	36.40	4.60	7161.42	138.44	334.21	138.49	10.52	9.47	-8.74
7296.00	45.40	0.00	7233.92	201.15	336.50	201.21	9.88	9.38	-4.79

Survey Report

MD UsFt	Inc °	Azi °	TVD UsFt	NS UsFt	EW UsFt	VS UsFt	DLS (°100 UsFt)	BR (°100 UsFt)	TR (°100 UsFt)
7391.00	54.00	2.50	7295.31	273.50	338.18	273.56	9.27	9.05	2.63
7487.00	59.90	5.20	7347.65	353.74	343.64	353.80	6.58	6.15	2.81
7582.00	65.80	7.00	7390.99	437.75	352.65	437.81	6.43	6.21	1.89
7627.00	73.60	8.40	7406.59	479.54	358.32	479.60	17.58	17.33	3.11
7678.00	75.40	8.20	7420.22	528.16	365.41	528.23	3.55	3.53	-0.39
7773.00	87.70	5.60	7434.15	621.27	376.64	621.33	13.23	12.95	-2.74
7882.00	91.50	5.10	7434.91	729.77	386.80	729.84	3.52	3.49	-0.46
7978.00	89.60	4.90	7433.99	825.40	395.17	825.47	1.99	-1.98	-0.21
8073.00	88.50	2.00	7435.57	920.20	400.89	920.27	3.26	-1.16	-3.05
8169.00	88.10	359.70	7438.42	1016.14	402.31	1016.21	2.43	-0.42	2.40
8264.00	88.70	359.50	7441.07	1111.10	401.65	1111.17	0.67	0.63	-0.21
8360.00	89.50	359.50	7442.58	1207.08	400.81	1207.15	0.83	0.83	0.00
8455.00	89.70	359.50	7443.24	1302.08	399.98	1302.15	0.21	0.21	0.00
8551.00	90.60	359.60	7442.99	1398.07	399.23	1398.14	0.94	0.94	0.10
8647.00	88.80	359.30	7443.49	1494.06	398.30	1494.13	1.90	-1.88	-0.31
8742.00	89.10	359.20	7445.23	1589.04	397.06	1589.11	0.33	0.32	-0.11
8838.00	89.80	359.00	7446.15	1685.02	395.55	1685.09	0.76	0.73	-0.21
8933.00	91.60	358.80	7444.99	1779.99	393.73	1780.06	1.91	1.89	-0.21
9029.00	91.20	359.80	7442.65	1875.96	392.56	1876.03	1.12	-0.42	1.04
9124.00	91.50	2.00	7440.41	1970.91	394.05	1970.98	2.34	0.32	2.32
9220.00	89.70	5.00	7439.40	2066.71	399.91	2066.78	3.64	-1.88	3.13
9315.00	90.70	4.40	7439.07	2161.39	407.69	2161.46	1.23	1.05	-0.63
9411.00	90.90	6.90	7437.73	2256.91	417.14	2256.98	2.61	0.21	2.60
9507.00	89.10	9.00	7437.73	2351.98	430.42	2352.05	2.88	-1.88	2.19
9602.00	89.40	8.40	7438.97	2445.88	444.79	2445.95	0.71	0.32	-0.63
9698.00	90.70	7.70	7438.89	2540.93	458.23	2541.01	1.54	1.35	-0.73
9793.00	90.30	10.40	7438.06	2634.73	473.17	2634.81	2.87	-0.42	2.84
9889.00	91.20	10.50	7436.80	2729.13	490.58	2729.22	0.94	0.94	0.10
9984.00	88.80	9.50	7436.80	2822.68	507.08	2822.77	2.74	-2.53	-1.05
10080.00	90.00	9.50	7437.81	2917.36	522.92	2917.45	1.25	1.25	0.00
10176.00	88.50	8.30	7439.07	3012.19	537.77	3012.28	2.00	-1.56	-1.25
10271.00	89.50	7.80	7440.72	3106.24	551.07	3106.33	1.18	1.05	-0.53
10367.00	90.20	7.70	7440.98	3201.36	564.02	3201.46	0.74	0.73	-0.10
10463.00	88.30	6.70	7442.23	3296.59	576.05	3296.69	2.24	-1.98	-1.04
10558.00	88.00	4.30	7445.30	3391.09	585.15	3391.20	2.54	-0.32	-2.53
10654.00	88.20	0.70	7448.48	3486.93	589.33	3487.04	3.75	0.21	-3.75
10749.00	88.80	0.20	7450.97	3581.90	590.08	3582.00	0.82	0.83	-0.53
10845.00	89.80	0.40	7452.14	3677.89	590.58	3677.99	1.06	1.04	0.21
10941.00	91.20	359.60	7451.31	3773.88	590.58	3773.98	1.68	1.46	0.83
11033.00	91.30	359.70	7449.30	3865.86	590.02	3865.96	0.15	0.11	0.11
11127.00	90.10	359.20	7448.15	3959.84	589.12	3959.95	1.38	-1.28	-0.53
11220.00	91.20	358.90	7447.09	4052.82	587.57	4052.93	1.23	1.18	-0.32
11313.00	90.40	0.20	7445.80	4145.81	586.84	4145.91	1.64	-0.86	1.40
11405.00	89.90	0.50	7445.56	4237.81	587.41	4237.91	0.63	-0.54	0.33
11500.00	88.00	1.20	7447.30	4332.77	588.82	4332.88	2.13	-2.00	0.74
11596.00	88.70	1.00	7450.06	4428.72	590.66	4428.82	0.76	0.73	-0.21
11691.00	89.40	0.80	7451.64	4523.69	592.15	4523.79	0.77	0.74	-0.21
11787.00	90.40	0.50	7451.80	4619.68	593.24	4619.79	1.09	1.04	-0.31
11882.00	89.00	1.20	7452.30	4714.67	594.65	4714.77	1.65	-1.47	0.74
11978.00	90.60	1.00	7452.64	4810.65	596.49	4810.75	1.68	1.67	-0.21
12074.00	88.40	1.50	7453.47	4906.61	598.58	4906.72	2.35	-2.29	0.52
12169.00	88.00	1.50	7456.46	5001.53	601.07	5001.64	0.42	-0.42	0.00
12265.00	88.70	1.50	7459.22	5097.46	603.58	5097.57	0.73	0.73	0.00
12360.00	89.30	1.30	7460.88	5192.42	605.90	5192.52	0.67	0.63	-0.21
12456.00	91.30	1.50	7460.38	5288.38	608.25	5288.49	2.09	2.08	0.21
12551.00	91.50	1.60	7458.06	5383.32	610.82	5383.43	0.24	0.21	0.11
12647.00	88.80	1.00	7457.80	5479.29	612.99	5479.39	2.88	-2.81	-0.63
12742.00	89.40	0.50	7459.30	5574.27	614.24	5574.37	0.82	0.63	-0.53
12838.00	90.70	0.10	7459.21	5670.26	614.74	5670.37	1.42	1.35	-0.42
12934.00	89.80	1.50	7458.79	5766.25	616.08	5766.36	1.73	-0.94	1.46
13029.00	90.20	0.30	7458.79	5861.23	617.57	5861.34	1.33	0.42	-1.26
13125.00	89.90	359.00	7458.71	5957.23	616.99	5957.34	1.39	-0.31	1.35
13220.00	90.20	359.30	7458.63	6052.22	615.58	6052.33	0.45	0.32	0.32
13316.00	89.80	359.00	7458.63	6148.21	614.15	6148.32	0.52	-0.42	-0.31
13411.00	89.80	358.80	7458.96	6243.19	612.33	6243.30	0.21	0.00	-0.21
13507.00	90.90	358.70	7458.37	6339.16	610.24	6339.27	1.15	1.15	-0.10
13603.00	93.10	359.40	7455.02	6435.09	608.64	6435.19	2.40	2.29	0.73
13699.00	89.90	359.80	7452.51	6531.04	607.97	6531.14	3.36	-3.33	0.42
13794.00	87.70	0.10	7454.50	6626.01	607.89	6626.12	2.34	-2.32	0.32
13890.00	88.10	0.20	7458.02	6721.95	608.14	6722.05	0.43	0.42	0.10
13985.00	90.20	1.20	7459.43	6816.92	609.30	6817.03	2.45	2.21	1.05
14081.00	85.80	0.00	7462.78	6912.83	610.31	6912.94	4.75	-4.58	-1.25
14177.00	87.40	0.30	7468.47	7008.66	610.56	7008.77	1.70	1.67	0.31
14272.00	89.60	359.70	7470.96	7103.62	610.56	7103.73	2.40	2.32	0.63
14368.00	87.90	358.90	7473.05	7199.59	609.39	7199.69	1.96	-1.77	-0.83
14463.00	91.30	359.80	7473.71	7294.56	608.31	7294.67	3.70	3.58	0.95
14559.00	88.20	0.00	7474.13	7390.55	608.14	7390.66	3.24	-3.23	0.21
14654.00	89.00	359.80	7476.45	7485.52	607.98	7485.63	0.87	0.84	0.21

Survey Report

MD UsFt	Inc °	Azi °	TVD UsFt	NS UsFt	EW UsFt	VS UsFt	DLS (°/100 UsFt)	BR (°/100 UsFt)	TR (°/100 UsFt)
14750.00	90.50	357.90	7476.87	7581.50	606.05	7581.60	2.52	1.56	-1.98
14846.00	92.40	357.30	7474.44	7677.38	602.03	7677.48	2.08	1.98	-0.63
14942.00	92.60	357.20	7470.26	7773.17	597.43	7773.28	0.23	0.21	-0.10
15037.00	94.60	357.30	7464.29	7867.87	592.88	7867.98	2.11	2.11	0.11
15133.00	88.10	356.20	7462.03	7963.64	587.44	7963.74	6.87	-6.77	-1.15
15229.00	86.70	359.10	7466.39	8059.45	583.51	8059.55	3.35	-1.46	3.02
15324.00	86.30	359.80	7471.69	8154.29	582.60	8154.39	0.77	0.21	0.74
15420.00	90.80	0.90	7473.61	8250.25	583.19	8250.35	4.22	4.06	1.15
15516.00	91.40	0.50	7471.77	8346.23	584.36	8346.33	0.75	0.83	-0.42
15611.00	89.70	359.20	7470.86	8441.22	584.11	8441.32	2.25	-1.79	1.37
15706.00	90.40	359.30	7470.78	8536.21	582.87	8536.31	0.74	0.74	0.11
15802.00	91.50	1.10	7469.19	8632.19	583.20	8632.29	2.20	1.15	1.87
15897.00	88.40	2.50	7469.27	8727.13	586.18	8727.23	3.58	-3.26	1.47
15993.00	90.00	2.60	7470.61	8823.02	590.46	8823.12	1.67	1.67	0.10
16088.00	91.30	3.20	7469.53	8917.89	595.26	8917.99	1.51	1.37	0.63
16184.00	90.60	0.30	7467.94	9013.82	598.19	9013.92	3.11	-0.73	-3.02
16280.00	89.60	0.20	7467.77	9109.82	598.61	9109.92	1.05	-1.04	-0.10
16375.00	90.60	0.50	7467.61	9204.81	599.19	9204.92	1.10	1.05	0.32
16471.00	91.40	1.30	7465.93	9300.79	600.70	9300.89	1.18	0.83	0.83
16567.00	89.70	1.40	7465.01	9396.75	602.96	9396.86	1.77	-1.77	0.10
16662.00	90.00	2.20	7465.26	9491.70	605.94	9491.81	0.90	0.32	0.84
16758.00	89.40	2.70	7465.76	9587.61	610.05	9587.72	0.81	-0.63	0.52
16853.00	88.70	2.40	7467.34	9682.51	614.27	9682.61	0.80	-0.74	-0.32
16949.00	88.40	3.00	7469.76	9778.37	618.79	9778.48	0.70	-0.31	0.63
17045.00	88.90	1.20	7472.03	9874.27	622.31	9874.38	1.95	0.52	-1.88
17140.00	93.40	1.50	7470.12	9969.20	624.55	9969.31	4.75	4.74	0.32
17236.00	94.00	0.80	7463.92	10064.98	626.47	10065.09	0.96	0.63	-0.73
17332.00	91.70	358.30	7459.15	10160.85	625.72	10160.96	3.54	-2.40	2.60
17428.00	89.40	356.90	7458.23	10256.75	621.70	10256.86	2.80	-2.40	-1.46
17523.00	88.90	355.40	7459.64	10351.52	615.32	10351.63	1.66	-0.53	-1.58
17543.00	88.60	355.00	7460.08	10371.45	613.65	10371.55	2.50	-1.50	-2.00
17600.00	88.60	355.00	7461.47	10428.21	608.68	10428.32	0.00	0.00	0.00 PTB