

NAD 83 (SURFACE HOLE LOCATION)
LATITUDE = 32°11'12.19" (32.186720°)
LONGITUDE = 104°17'32.39" (104.292329°)
NAD 27 (SURFACE HOLE LOCATION)
LATITUDE = 32°11'11.76" (32.186601°)
LONGITUDE = 104°17'30.59" (104.291829°)
STATE PLANE NAD 83 (N.M. EAST)
N: 431665.66' E: 554022.43'
STATE PLANE NAD 27 (N.M. EAST)
N: 431608.28' E: 512839.93'

NAD 83 (BHL/LTP)
LATITUDE = 32.184767
LONGITUDE = -104.256242

District I
1625 N. French Dr., Hobbs, NM 88240
Phone: (575) 393-6161 Fax: (575) 393-0720
District II
811 S. First St., Artesia, NM 88210
Phone: (575) 748-1283 Fax: (575) 748-9720
District III
1000 Rio Brazos Road, Aztec, NM 87410
Phone: (505) 334-6178 Fax: (505) 334-6170
District IV
1220 S. St. Francis Dr., Santa Fe, NM 87505
Phone: (505) 476-3460 Fax: (505) 476-3462

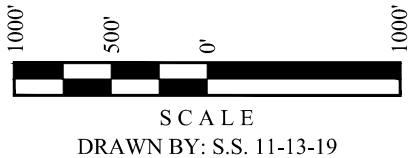
State of New Mexico
Energy, Minerals & Natural Resources Department
OIL CONSERVATION DIVISION
1220 South St. Francis Dr.
Santa Fe, NM 87505

Form C-102
Revised August 1, 2011
Submit one copy to appropriate
District Office

☒ AMENDED REPORT

- = SURFACE HOLE LOCATION
- ◆ = LANDING POINT/FIRST TAKE POINT
- = BOTTOM HOLE LOCATION/
LAST TAKE POINT
- ▲ = SECTION CORNER LOCATED
- △ = SECTION CORNER
RE-ESTABLISHED.
(Not Set on Ground.)

NOTE:
• Distances referenced on plat to
section lines are perpendicular.
• Basis of Bearing is a Transverse
Mercator Projection with a Central
Meridian of W103°53'00"



WELL LOCATION AND ACREAGE DEDICATION PLAT

30-015-46537 ¹ API Number	98220 ² Pool Code	Purple Sage; Wolfcamp (Gas) ³ Pool Name
320797 ⁴ Property Code	CRAWFORD 27-26 FEE ⁵ Property Name	30H ⁶ Well Number
215099 ⁷ OGRID No.	CIMAREX ENERGY CO. ⁸ Operator Name	3341.0' ⁹ Elevation

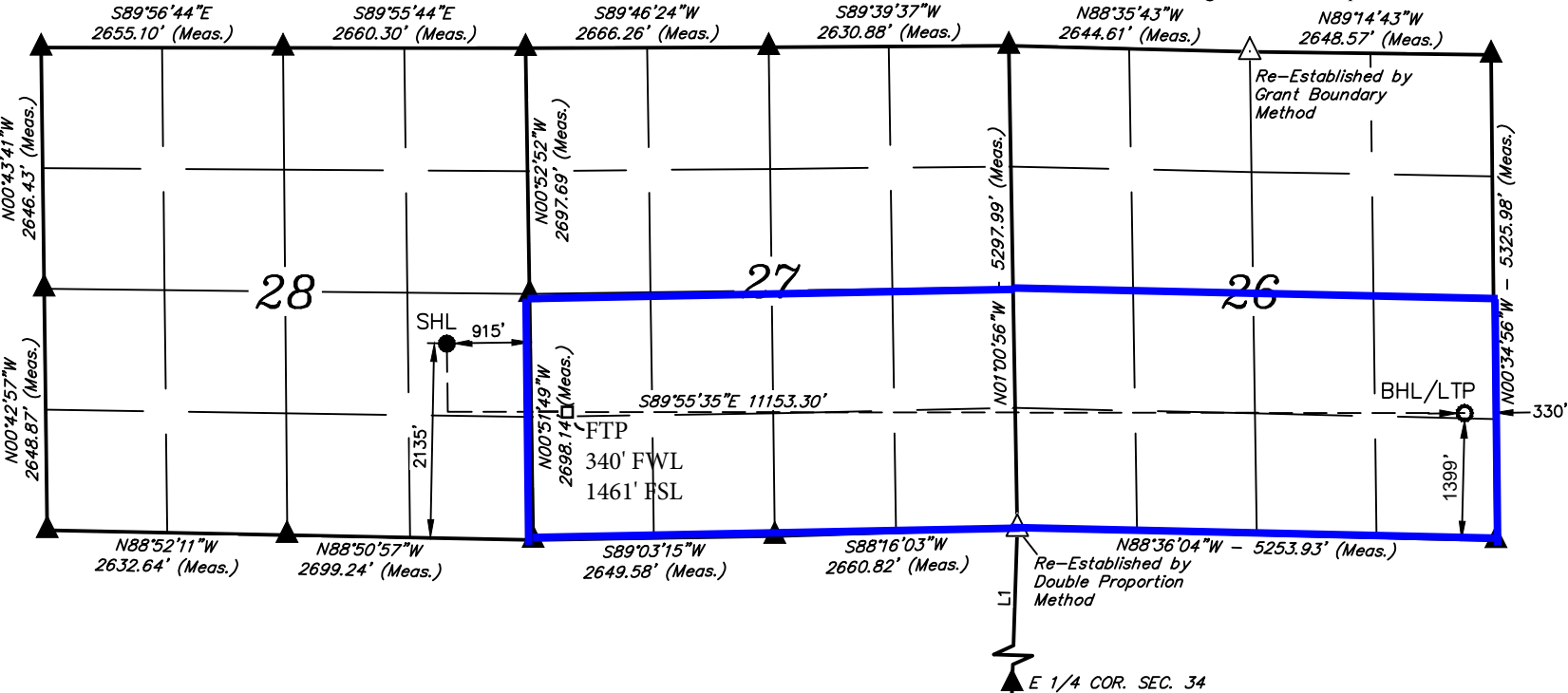
¹⁰ Surface Location

UL or lot no.	Section	Township	Range	Lot Idn	Feet from the	North/South line	Feet from the	East/West line	County
I	28	24S	26E		2135	SOUTH	915	EAST	EDDY

¹¹ Bottom Hole Location If Different From Surface

UL or lot no.	Section	Township	Range	Lot Idn	Feet from the	North/South line	Feet from the	East/West line	County
I	26	24S	26E		1399	SOUTH	330	EAST	EDDY
640 ¹² Dedicated Acres	¹³ Joint or Infill		¹⁴ Consolidation Code		¹⁵ Order No.				

No allowable will be assigned to this completion until all interests have been consolidated or a non-standard unit has been approved by the division.



¹⁷ OPERATOR
CERTIFICATION

I hereby certify that the information contained herein is true and complete to the best of my knowledge and belief, and that this organization either owns a working interest or unleased mineral interest in the land including the proposed bottom hole location or has a right to drill this well at this location pursuant to a contract with an owner of such a mineral or working interest, or to a voluntary pooling agreement or a compulsory pooling order heretofore entered by the division.

Fatima Vasquez 01/22/2021
Signature Date

Fatima Vasquez
Printed Name

fvasquez@cimarex.com
E-mail Address

¹⁸ SURVEYOR
CERTIFICATION

I hereby certify that the well location shown on this plat was plotted from field notes of actual surveys made by me or under my supervision, and that the same is true and correct to the best of my belief.

November 02, 2019

Date of Survey
Signature and Seal of Professional Surveyor:



Certificate Number: