

District I
1625 N. French Dr., Hobbs, NM 88240

District II
1301 W. Grand Avenue, Artesia, NM 88210

District III
1000 Rio Brazos Rd., Aztec, NM 87410

District IV
1220 S. St. Francis Dr., Santa Fe, NM 87505

State of New Mexico
Energy, Minerals & Natural Resources Department
OIL CONSERVATION DIVISION
1220 South St. Francis Dr.
Santa Fe, NM 87505

Form C-102
Revised October 15, 2009
Submit one copy to appropriate
District Office

AMENDED REPORT

WELL LOCATION AND ACREAGE DEDICATION PLAT

¹ API Number 30-015-38557		² Pool Code 50386		³ Pool Name POKER LAKE EAST; DELAWARE	
⁴ Property Code 300635		⁵ Property Name COTTON DRAW UNIT ✓			⁶ Well Number 156 H
⁷ OGRID No. 6137 ✓		⁸ Operator Name DEVON ENERGY PRODUCTION COMPANY, L.P. ✓			⁹ Elevation 3492.7

¹⁰ Surface Location

UL or lot no.	Section	Township	Range	Lot Idn	Feet from the	North/South line	Feet from the	East/West line	County
A	35	24 S	31 E		200	NORTH	660	EAST	EDDY

¹¹ Bottom Hole Location If Different From Surface

UL or lot no.	Section	Township	Range	Lot Idn	Feet from the	North/South line	Feet from the	East/West line	County
P	35	24 S	31 E		398	SOUTH	627	EAST	EDDY

¹² Dedicated Acres 317.37	¹³ Joint or Infill	¹⁴ Consolidation Code	¹⁵ Order No.
---	-------------------------------	----------------------------------	-------------------------

No allowable will be assigned to this completion until all interests have been consolidated or a non-standard unit has been approved by the division.

¹⁷ OPERATOR CERTIFICATION

I hereby certify that the information contained herein is true and complete to the best of my knowledge and belief, and that this organization either owns a working interest or undivided mineral interest in the land including the proposed bottom hole location or has a right to drill this well at this location pursuant to a contract with an owner of such a mineral or working interest, or to a voluntary pooling agreement or a compulsory pooling order heretofore entered by the division

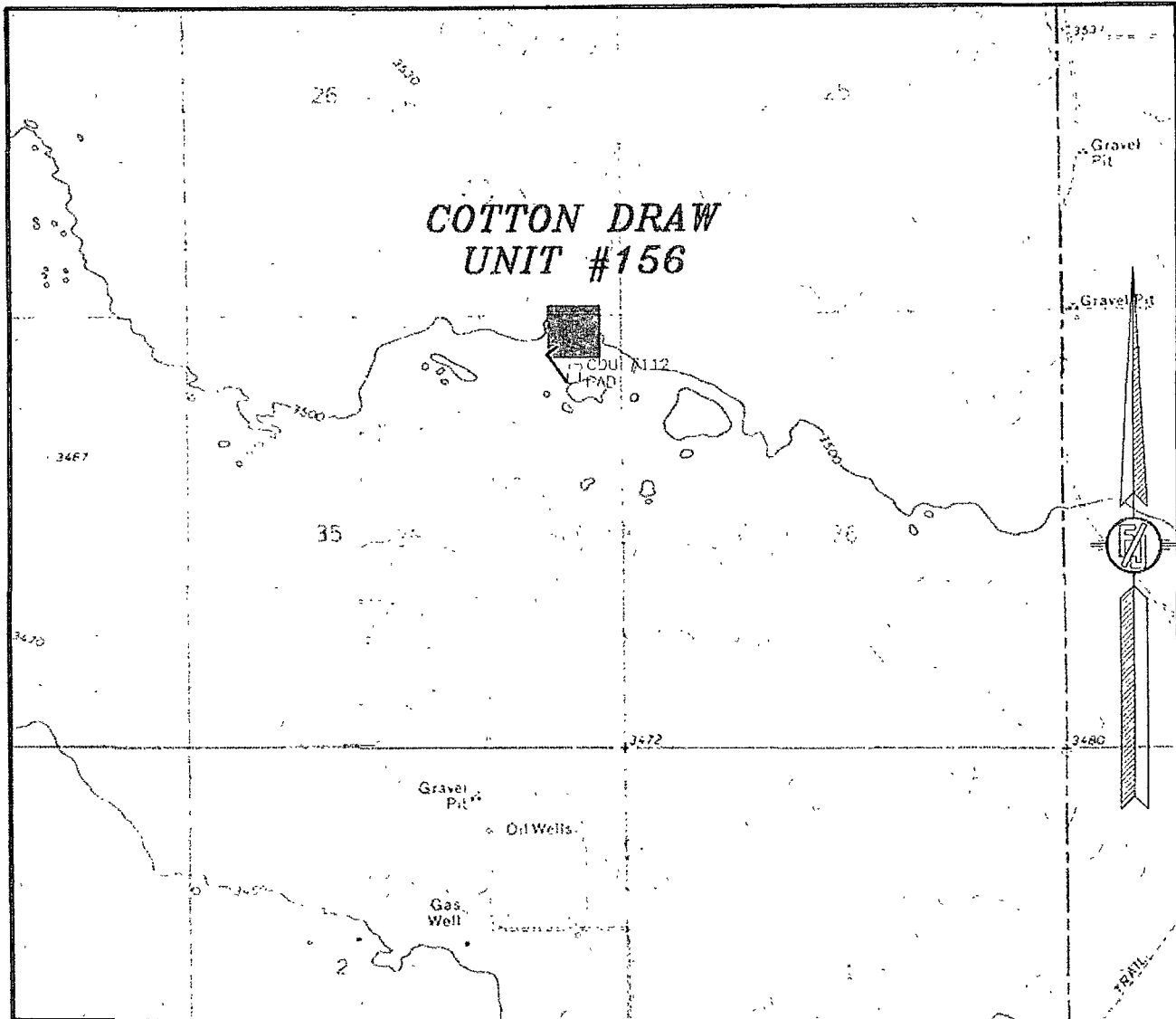
Signature: *Judy A. Barnett* Date: 8/15/11
Printed Name: Judy A. Barnett
Regulatory Specialist

¹⁸ SURVEYOR CERTIFICATION

I hereby certify that the well location shown on this plat was plotted from field notes of actual surveys made by me or under my supervision, and that the same is true, and correct to the best of my belief.

Signature and Seal of Professional Surveyor: *Filimon L. Jaramillo*
Certificate Number: FILIMON L. JARAMILLO, PLS 12797
REGISTERED LAND SURVEYOR SURVEY NO 235

SECTION 35, TOWNSHIP 24 SOUTH, RANGE 31 EAST, N.M.P.M.
 EDDY COUNTY, STATE OF NEW MEXICO
LOCATION VERIFICATION MAP



CONTOUR INTERVAL:
 BIG SINKS
 PADUCA BREAKS

NOT TO SCALE

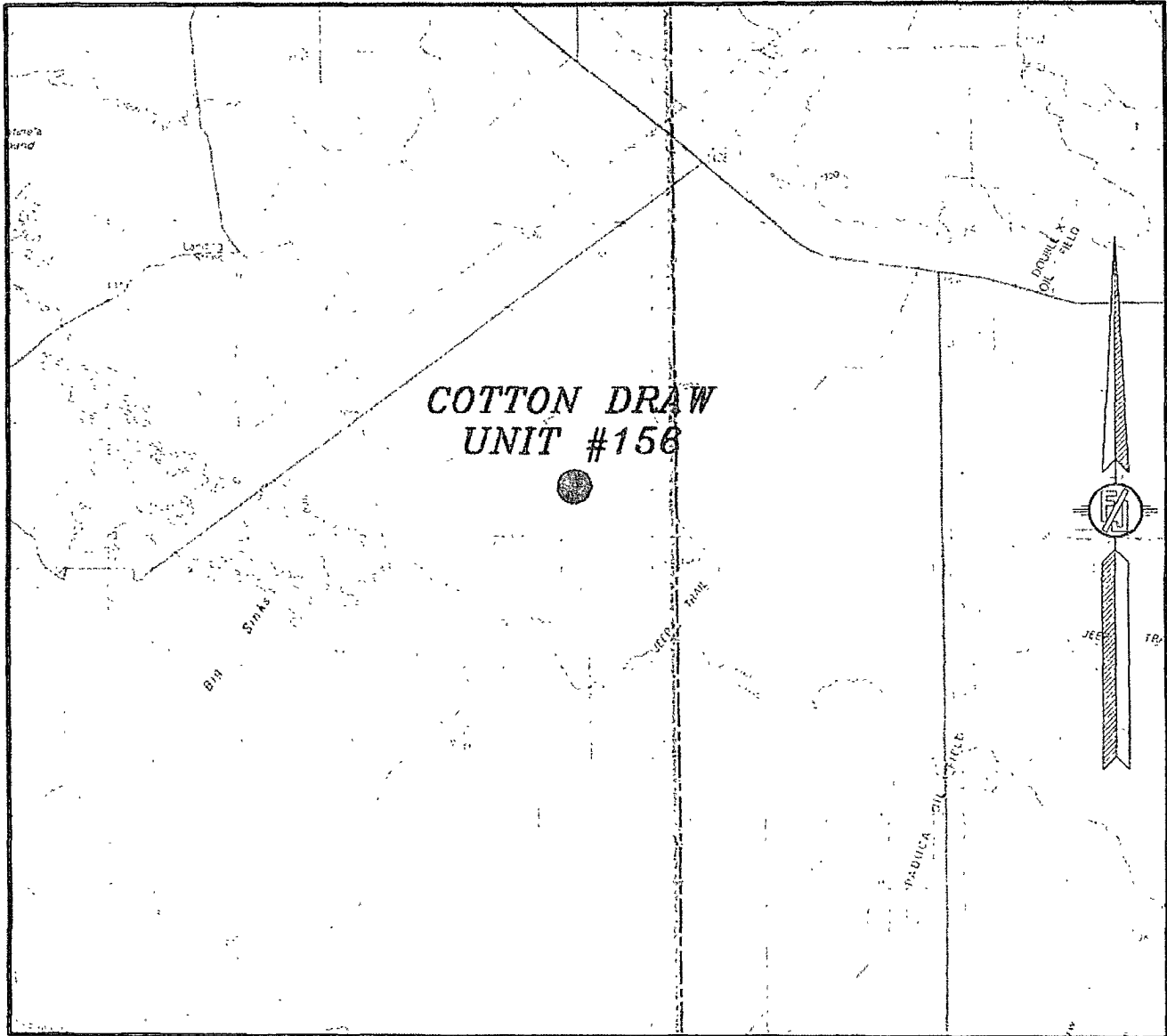
DEVON ENERGY PRODUCTION COMPANY, L.P.
COTTON DRAW UNIT #156
 LOCATED 200 FT. FROM THE NORTH LINE
 AND 660 FT. FROM THE EAST LINE OF
 SECTION 35, TOWNSHIP 24 SOUTH,
 RANGE 31 EAST, N.M.P.M.
 EDDY COUNTY, STATE OF NEW MEXICO

SEPTEMBER 30, 2010

SURVEY NO. 235

MADRON SURVEYING, INC. 401 SOUTH CANAL CARLSBAD, NEW MEXICO
 (575) 887-2850

SECTION 35, TOWNSHIP 24 SOUTH, RANGE 31 EAST, N.M.P.M.
EDDY COUNTY, STATE OF NEW MEXICO
VICINITY MAP



NOT TO SCALE

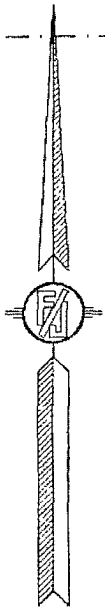
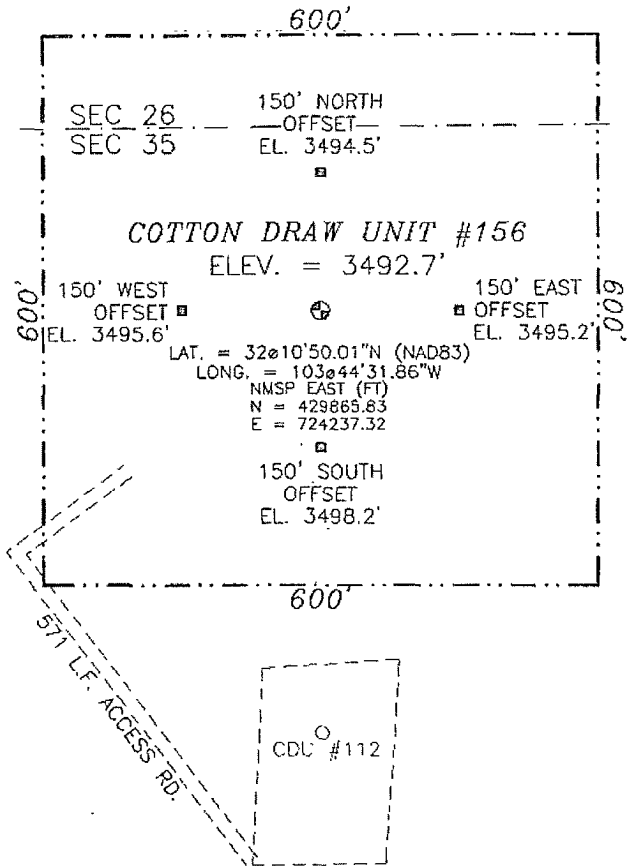
DEVON ENERGY PRODUCTION COMPANY, L.P.
COTTON DRAW UNIT #156
LOCATED 200 FT. FROM THE NORTH LINE
AND 660 FT. FROM THE EAST LINE OF
SECTION 35, TOWNSHIP 24 SOUTH,
RANGE 31 EAST, N.M.P.M.
EDDY COUNTY, STATE OF NEW MEXICO

SEPTEMBER 30, 2010

SURVEY NO. 235

MADRON SURVEYING, INC. 301 SOUTH CANON CARLSBAD, NEW MEXICO
(575) 257-5830

SECTION 35, TOWNSHIP 24 SOUTH, RANGE 31 EAST, N.M.P.M.
 EDDY COUNTY, STATE OF NEW MEXICO



0 20 100 200 400

SCALE 1" = 200'

DIRECTIONS TO LOCATION
 FROM CR. #798 (BUCK JACKSON) AND CR. #791 (BUCK THORN) GO SOUTH ON CR. #791 3.1 MILES TURN LEFT AND GO EAST 1.9 MILES TURN LEFT AND GO NORTH 0.7 MILES TURN LEFT AND GO WEST 0.3 MILES TURN RIGHT AND GO NORTH 0.4 MILES TURN RIGHT AND GO EAST 0.7 MILES TURN LEFT AND GO NORTH 0.8 MILES TURN LEFT AND GO WEST 0.4 MILES TO EXISTING CDU #112 WELL AND FROM THE SOUTHWEST PAD CORNER FOLLOW PROPOSED ROAD SURVEY NW. 422' AND LOCATION IS ON RIGHT (NE) 422'

DEVON ENERGY PRODUCTION COMPANY, L.P.
COTTON DRAW UNIT #156
 LOCATED 200 FT. FROM THE NORTH LINE
 AND 660 FT. FROM THE EAST LINE OF
 SECTION 35, TOWNSHIP 24 SOUTH,
 RANGE 31 EAST, N.M.P.M.
 EDDY COUNTY, STATE OF NEW MEXICO

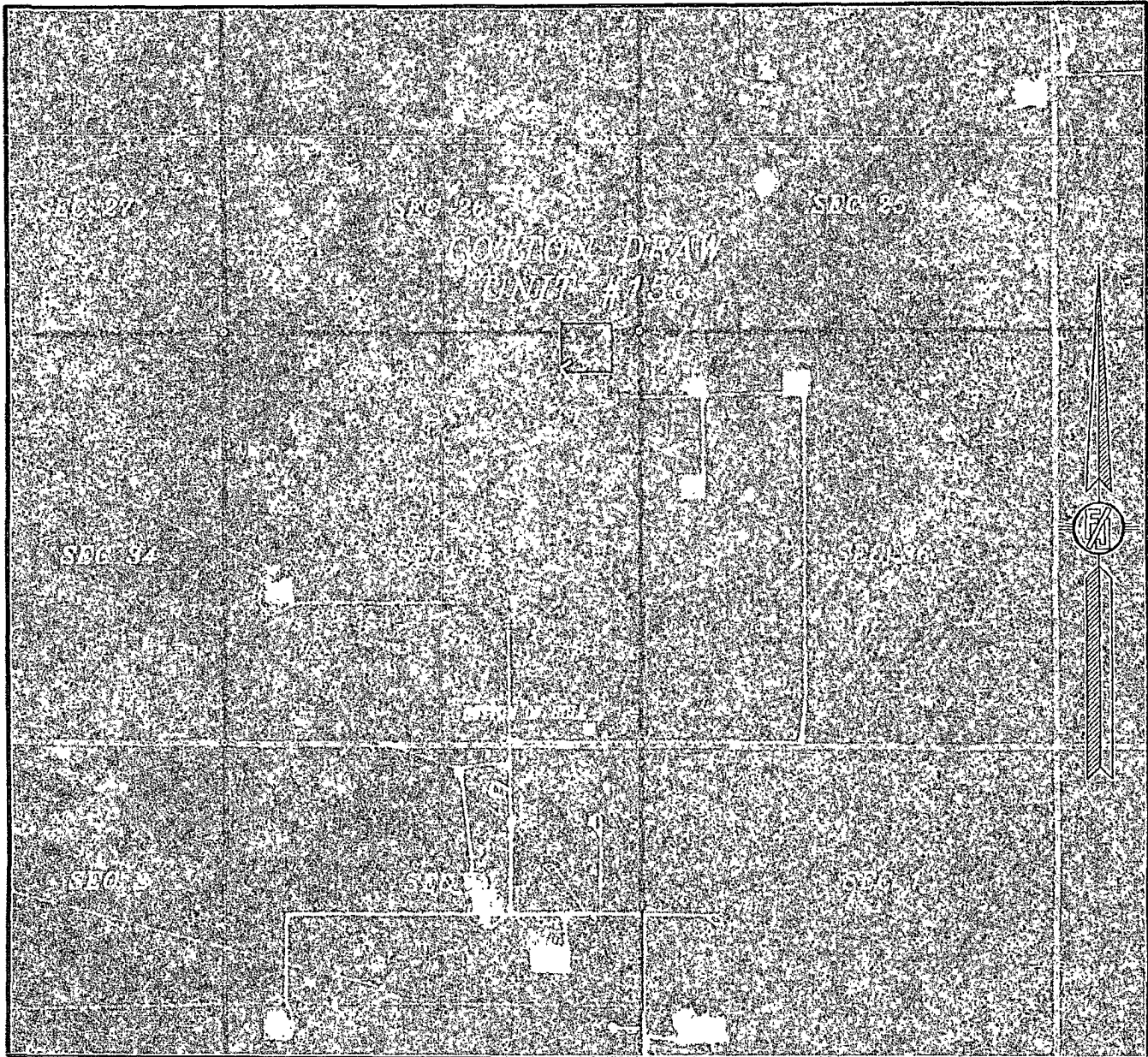
SEPTEMBER 30, 2010

SURVEY NO. 235

MADRON SURVEYING, INC. 301 SOUTH CANAL CARLSBAD, NEW MEXICO
 (575) 887-5832

SECTION 35, TOWNSHIP 24 SOUTH, RANGE 31 EAST, N.M.P.M.
EDDY COUNTY, STATE OF NEW MEXICO

AERIAL PHOTO



NOT TO SCALE
AERIAL PHOTO:
GOOGLE EARTH
USDA - AUG, 2009

DEVON ENERGY PRODUCTION COMPANY, L.P.
COTTON DRAW UNIT #156

LOCATED 200 FT. FROM THE NORTH LINE
AND 660 FT. FROM THE EAST LINE OF
SECTION 35, TOWNSHIP 24 SOUTH,
RANGE 31 EAST, N.M.P.M.
EDDY COUNTY, STATE OF NEW MEXICO

SEPTEMBER 30, 2010

SURVEY NO. 235

MADRON SURVEYING, INC. 201 SOUTH CANAL CARLSBAD, NEW MEXICO
(505) 847-5810