

DISTRICT I
1025 N. French Dr., Hobbs, NM 88240

DISTRICT II
1301 W. Grand Avenue, Artesia, NM 88210

DISTRICT III
1000 Rio Brazos Rd., Aztec, NM 87410

DISTRICT IV
1220 S St. Francis Dr., Santa Fe, NM 87505

State of New Mexico
Energy, Minerals and Natural Resources Department

Form C-102
Revised October 15, 2009

Submit one copy to appropriate
District Office

OIL CONSERVATION DIVISION
1220 South St. Francis Dr.
Santa Fe, New Mexico 87505

WELL LOCATION AND ACREAGE DEDICATION PLAT

☐ AMENDED REPORT

API Number 30-015-37646 ✓	Pool Code 50386	Pool Name Poker Lake, South (Delaware)
Property Code 306402 ✓	Property Name POKER LAKE UNIT	Well Number ✓ 303H
OGRID No 260737 ✓	Operator Name BOPCO, L.P.	Elevation 3411'

Surface Location

UL or lot No.	Section	Township	Range	Lot Idn	Feet from the	North/South line	Feet from the	East/West line	County
N	4	25 S	31 E		1264	SOUTH	2310	WEST	EDDY

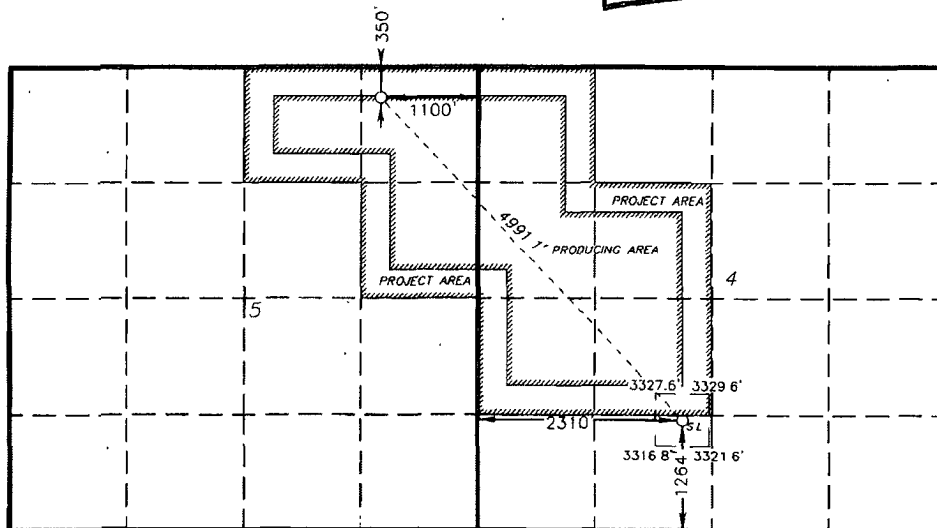
Bottom Hole Location If Different From Surface

UL or lot No.	Section	Township	Range	Lot Idn	Feet from the	North/South line	Feet from the	East/West line	County
A	5	25 S	31 E		350	NORTH	1100	EAST	EDDY

Dedicated Acres 320	Joint or Infill	Consolidation Code	Order No
------------------------	-----------------	--------------------	----------

NO ALLOWABLE WILL BE ASSIGNED TO THIS COMPLETION UNTIL ALL INTERESTS HAVE BEEN CONSOLIDATED
OR A NON-STANDARD UNIT HAS BEEN APPROVED BY THE DIVISION

RECEIVED
SEP 12 2011
NMOCD ARTESIA



PROPOSED BOTTOM
HOLE LOCATION

Lat - N 32°09'57.04"
Long - W 103°47'39.68"
NMSPCE- N 424472.512
E 666779.476
(NAD-27)

DELAWARE ENTRY POINT

Lat - N 32°09'20.31"
Long - W 103°47'00.86"
NMSPCE- E 670135.483
(NAD-27)

SURFACE LOCATION

Lat - N 32°09'20.31"
Long - W 103°47'00.86"
NMSPCE- N 420778.451
E 670135.483
(NAD-27)

OPERATOR CERTIFICATION

I hereby certify that the information contained herein is true and complete to the best of my knowledge and belief, and that this organization either owns a working interest or unleased mineral interest in the land including the proposed bottom hole location or has a right to drill this well at this location pursuant to a contract with an owner of such a mineral or working interest, or to a voluntary pooling agreement or a compulsory pooling order heretofore entered by the division.

Signature: *Jeremy Braden* 8-17-11
Date

Printed Name
Jeremy Braden

SURVEYOR CERTIFICATION

I hereby certify that the well location shown on this plat was plotted from field notes of actual surveys made by me or under my supervision and that the same is true and correct to the best of my belief

Date Surveyed: JANUARY 10 2010
Signature: *Gary L. Jones*
Professional Surveyor
Certificate No. Gary L. Jones 7977

BASIN SURVEYS