

Surface Use & Operating Plan

Burch Keely Unit #563

- Surface Tenant: Bogle Farms, Lewis Derrick, P O Box 460, Dexter, NM 88230.
- New Road: approx. 106'
- Flow Line: approx. 4900'
- Facilities: BKU 18-A Battery (BKU #411 Well)
- Well Site Information
 - V Door: West
 - Topsoil: South
 - Interim Reclamation: South/West

Notes



Onsite: 3/24/2011

John Fast (BLM), Chris Moon (COG), Curtis Griffin (COG), Gary Box (J.W.S)

SURFACE USE AND OPERATING PLAN

1. Existing & Proposed Access Roads

- A. The well site survey and elevation plat for the proposed well is shown in Exhibit #1. It was staked by John West Engineering, Hobbs, NM.
- B. All roads to the location are shown in the topographic map Exhibit #2. The existing lease roads are illustrated and are adequate for travel during drilling and production operations. Upgrading existing roads prior to drilling the well will be done where necessary. The road route to the well site is depicted on Exhibit #13. The road highlighted in Exhibit #13 will be used to access the well.
- C. Directions to location: From the Intersection of US HWY #82 and Co. Rd. #215 (Kewanee), go North on Co. Rd. #215 approx. 1.0 miles. Turn Right and go East approx. 1.4 miles. Turn Left and go North approx. 0.2 miles. Turn Right and go East 0.5 miles to a P&A well pad location is approx. 434 Feet Southeast. See Vicinity Map, Exhibit #3.
- D. Routine grading and maintenance of existing roads will be conducted as necessary to maintain their condition as long as any operations continue on this lease. Roads will be maintained according to specifications in section 2A of this Surface Use and Operating Plan.

2. Proposed Access Road:

Exhibit #4 shows that 106' of new access road will be required for this location. If any road is required it will be constructed as follows:

- A. The maximum width of the running surface will be 14'. The road will be crowned, ditched and constructed of 6" rolled and compacted caliche. Ditches will be at 3:1 slope and 4 feet wide. Water will be diverted where necessary to avoid ponding, prevent erosion, maintain good drainage, and to be consistent with local drainage patterns.
- B. The average grade will be less than 1%.
- C. No turnouts are planned.
- D. No culverts, cattleguard, gates, low water crossings or fence cuts are necessary.
- E. Surfacing material will consist of native caliche. Caliche will be obtained from the actual well site if available. If not available onsite, caliche will be hauled from the nearest BLM approved caliche pit.

3. Location of Existing Well:

Exhibit #11 shows all existing wells within a one-mile radius of this well.

As shown on this plat there are numerous wells producing from the San Andres and Yeso formations.

4. Location of Existing and/or Proposed Facilities:

- A. COG Operating LLC does operate a production facility on this lease.
- B. If the well is productive, contemplated facilities will be as follows:
 - 1) Production will be sent to the BKU 18-A Battery located at the BKU #411 well location. The facility location is shown in Exhibit #5.
 - 2) The tank battery and facilities including all flow lines and piping will be installed according to API specifications.
 - 3) Any additional caliche will be obtained from the actual well site. If caliche does not exist or is not plentiful from the well site, the caliche will be hauled from a BLM approved caliche pit. Any additional construction materials will be purchased from contractors.
 - 4) Proposed flow lines, will follow an archaeologically approved route to the BKU 18-A Battery located at the BKU #411 well location. The flowline will be SDR 7 3" poly line laid on the surface and will be approximately 4900 feet in length.
 - 5) It will be necessary to run electric power if this well is productive. Power will be provided by CVE and they will submit a separate plan and ROW for service to the well location.
 - 6) If the well is productive, rehabilitation plans will include the following:
 - The original topsoil from the well site will be returned to the location, and the site will be re-contoured as close as possible to the original site.

5. Location and Type of Water Supply:

The well will be drilled with combination brine and fresh water mud system as outlined in the drilling program. The water will be obtained from commercial water stations in the area and hauled to location by transport truck over the existing and proposed access roads shown in Exhibit #2. If a commercial fresh water source is nearby, fast line may be laid along existing road ROW's and fresh water pumped to the well. No water well will be drilled on the location.

6. Source of Construction Materials and Location "Turn-Over" Procedure:

Obtaining caliche: The primary way of obtaining caliche to build locations and roads will be by "turning over" the location. This means, caliche will be obtained from the actual well sight. A caliche permit will be obtained from BLM prior to pushing up any caliche. 2400 cu. Yards is max amount of caliche needed for pad and roads. Amount will vary for each pad. The procedure below has been approved by BLM personnel:

- A. The top 6 inches of topsoil is pushed off and stockpiled along the side of the location.**
- B. An approximate 120' X 120' area is used within the proposed well site to remove caliche.**
- C. Subsoil is removed and piled alongside the 120' by 120' area within the pad site.**
- D. When caliche is found, material will be stock piled within the pad site to build the location and road.**
- E. Then subsoil is pushed back in the hole and caliche is spread accordingly across entire location and road.**
- F. Once well is drilled, the stock piled top soil will be used for interim reclamation and spread along areas where caliche is picked up and the location size is reduced. Neither caliche nor subsoil will be stock piled outside of the well pad. Topsoil will be stockpiled along the edge of the pad as depicted in attached plat.**

In the event that no caliche is found onsite, caliche will be hauled in from a BLM approved caliche pit.

7. Methods of Handling Water Disposal:

- A. The well will be drilled utilizing a closed loop mud system. Drill cuttings will be held in roll-off style mud boxes and taken to an NMOCD approved disposal site.**
- B. Drilling fluids will be contained in steel mud pits.**
- C. Water produced from the well during completion will be held temporarily in steel tanks and then taken to an NMOCD approved commercial disposal facility.**
- D. Garbage and trash produced during drilling or completion operations will be collected in a trash bin and hauled to an approved landfill. No toxic waste or hazardous chemicals will be produced by this operation.**

- E. Human waste and grey water will need to be properly contained and disposed of. Proper disposal and elimination of waste and grey water may include but are not limited to portable septic systems and/or portable waste gathering systems (i.e. portable toilets).
- F. After the rig is moved out and the well is either completed or abandoned, all waste materials will be cleaned up within 30 days. In the event of a dry hole only a dry hole marker will remain.

8. Ancillary Facilities:

No airstrip, campsite or other facilities will be built as a result of the operation on this well.

9. Well Site Layout:

- A. The drill pad layout, with elevations staked by John West Engineering, is shown in Exhibit #4. Dimensions of the pad and pits are shown on Exhibit #6. V door direction is West. Topsoil, if available, will be stockpiled per BLM specifications. Because the pad is almost level no major cuts will be required.
- B. Exhibit #6 also shows the proposed orientation of closed loop system and access road. No permanent living facilities are planned, but a temporary foreman/toolpusher's trailer will be on location during the drilling operations.

10. Plans for Restoration of the Surface:

- A. Interim Reclamation will take place after the well has been completed. The pad will be downsized by reclaiming the areas not needed for production operations. The portions of the pad that are not needed for production operations will be re-contoured to its original state as much as possible. The caliche that is removed will be reused to either build another pad site or for road repairs within the lease. The stockpiled topsoil will then be spread out reclaimed area and reseeded with a BLM approved seed mixture. In the event that the well must be worked over or maintained, it may be necessary to drive, park, and/or operate machinery on reclaimed land. This area will be repaired or reclaimed after work is complete.
- B. Final Reclamation: Upon plugging and abandoning the well all caliche for well pad and lease road will be removed and surface will be recountoured to reflect its surroundings as much as possible. Caliche will be recycled for road repair or reused for another well pad within the lease. If any topsoil remains, it will be spread out and the area will be re-seeded with a BLM approved mixture and re-vegetated as per BLM orders.

11.Surface Ownership:

- A. The surface is owned by the U.S. Government and is administered by the Bureau of Land Management. The surface is multiple uses with the primary uses of the region for grazing of livestock and the production of oil and gas.
- B. The surface tenant is Bogle Farms, Lewis Derrick, P.O. Box 460, Dexter, NM 88230.
- C. The proposed road routes and surface location will be restored as directed by the BLM

12.Other Information:

- A. The area around the well site is grassland and the topsoil is sandy. The vegetation is moderately sparse with native prairie grasses, some mesquite and shinnery oak. No wildlife was observed but it is likely that mule deer, rabbits, coyotes and rodents traverse the area.
- B. There is no permanent or live water in the immediate area.
- C. There are no dwellings within 2 miles of this location.
- D. If needed, a Cultural Resources Examination is being prepared by Southern New Mexico Archaeological Services, Inc. P.O. Box 1, Bent New Mexico, 88314, phone # 505-671-4797 and the results will be forwarded to your office in the near future. Otherwise, **COG will be participating in the Permian Basin MOA Program.**

13. Bond Coverage:

Bond Coverage is Nationwide Bond # 000215

14. Lessee's and Operator's Representative:

The COG Operating LLC representative responsible for assuring compliance with the surface use plan is as follows:

John Coffman,	Erick Nelson.
Drilling Superintendent	Division Operations Manager
COG Operating LLC	COG Operating LLC
550 W. Texas, Suite 1300	550 W. Texas, Suite 1300
Midland, TX 79701	Midland, TX 79701
Phone (432) 683-7443 (office)	Phone (505) 746-2210 (office)
(432) 631-9762 (cell)	(432) 238-7591 (cell)

*Surface Use Plan
COG Operating, LLC
Burch Keely Unit #563
940' FNL & 330' FEL UL A
Section 18, T-17-S, R30-E
Eddy County, New Mexico*

I hereby certify that I, or persons under my direct supervision, have inspected the drill site and access road proposed herein; that I am familiar with the conditions that presently exist; that I have full knowledge of State and Federal laws applicable to this operation; that the statements made in this APD package are, to the best of my knowledge, true and correct; and that the work associated with the operations proposed herein will be performed in conformity with this APD package and the terms and conditions under which it is approved. I also certify that I, or COG Operating, LLC, am responsible for the operations conducted under this application. These statements are subject to the provisions of 18 U.S.C. 1001 for the filing of false statements. Executed this 8th day of June, 2011.

Signed: Carl Bird

Printed Name: Carl Bird

Position: Drilling Engineer

Address: 550 W. Texas, Suite 1300, Midland, Texas 79701

Telephone: (432) 683-7443

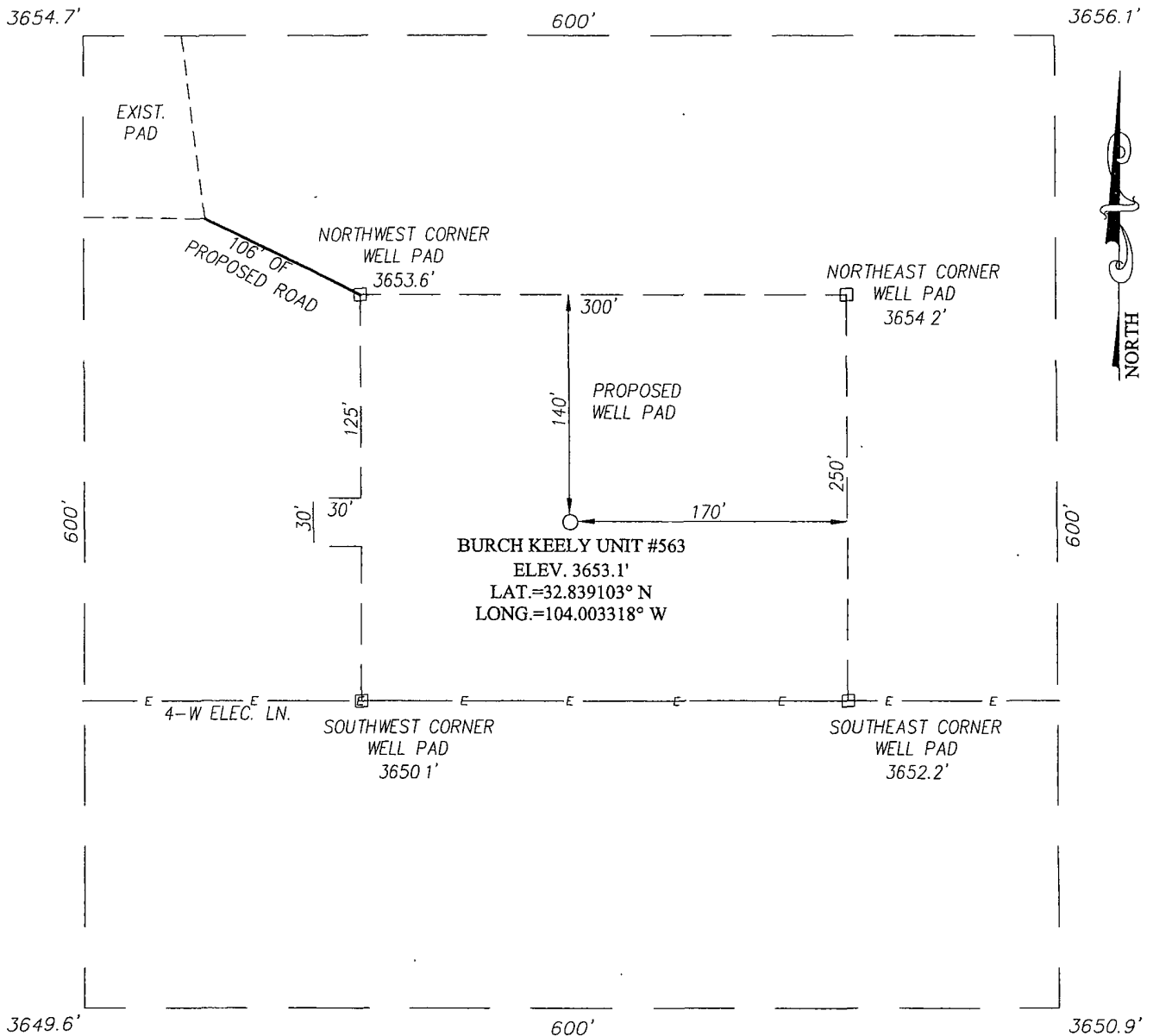
Field Representative (if not above signatory): Same

E-mail: cbird@conchoresources.com

Exhibits:

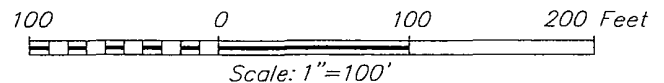
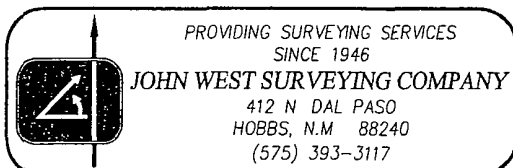
- Exhibit #1 Wellsite and Elevation Plat**
Form C-102 Well location and acreage dedication plat
- Exhibit #2 Topographic Map (West)**
- Exhibit #3 Vicinity Map and area roads**
- Exhibit #4 Elevation Plat (West)**
- Exhibit #5 Topographic extract showing wells, roads and flowlines**
- Exhibit #6 Pad Layout and orientation**
- Exhibit #7 H2S Signage**
- Exhibit #8 H2S Equipment location**
- Exhibit #9 BOP and Choke diagrams**
- Exhibit #10 Form C-144 NMOCD pit permit application**
- Exhibit #11 1 Mile Radius List and Map showing all wells permitted,
producing and plugged**
- Exhibit #12 Flow Line Route**
- Exhibit #13 Road Route**

SECTION 18, TOWNSHIP 17 SOUTH, RANGE 30 EAST, N.M.P.M.,
EDDY COUNTY, NEW MEXICO



DIRECTIONS TO LOCATION

FROM THE INTERSECTION OF U.S. HWY #82 AND CO. RD. #215 (KEWANEE), GO NORTH ON CO. RD. #215 APPROX. 1.0 MILE. TURN RIGHT AND GO EAST APPROX. 1.4 MILES. TURN LEFT AND GO NORTH APPROX. 0.2 MILES. TURN RIGHT AND GO EAST APPROX. 0.5 MILES TO A MARBOB PLUGGED AND ABANDONED WELL PAD. THIS LOCATION IS APPROX. 434 FEET SOUTHEAST OF THIS WELL.

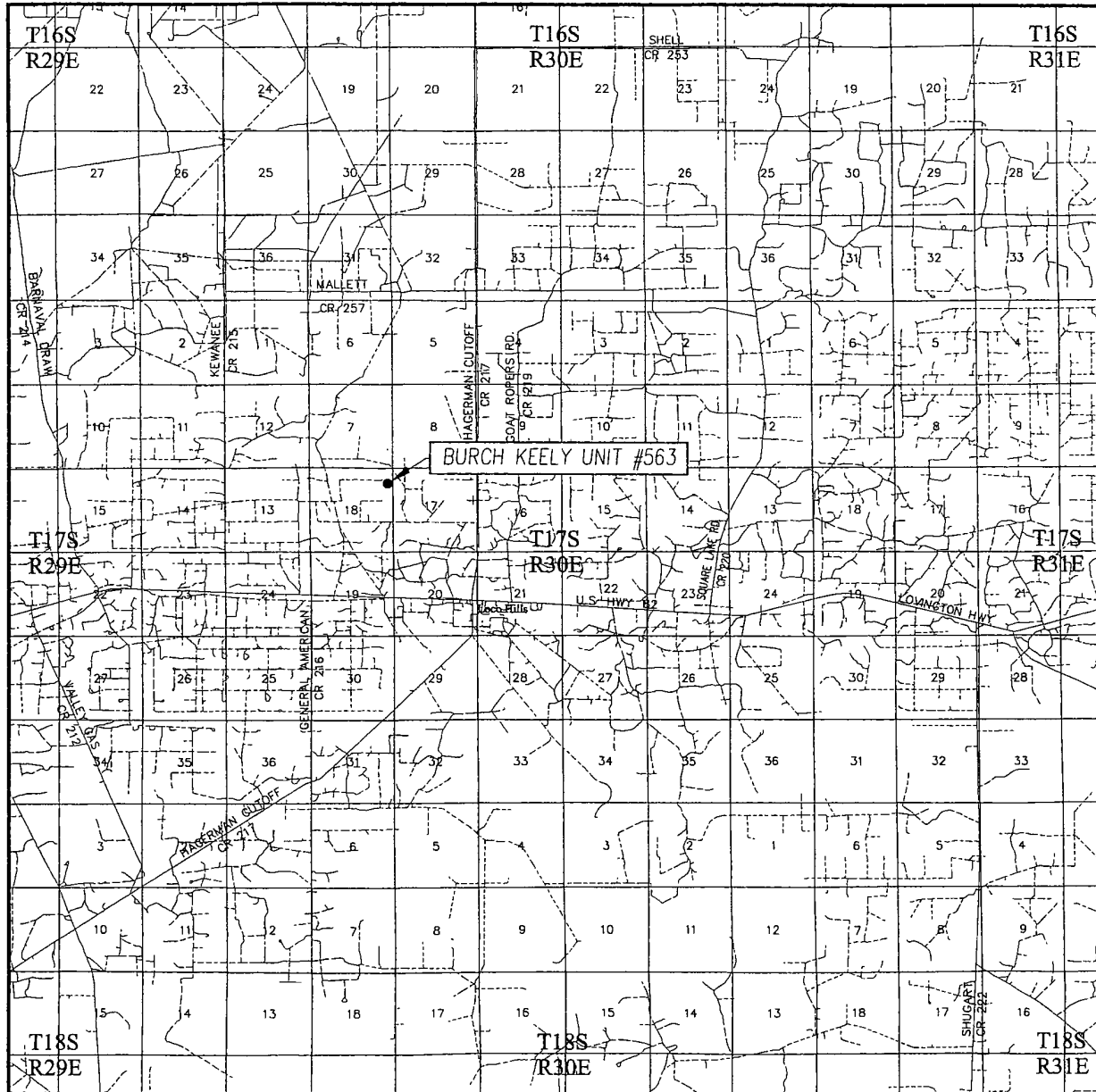


COG OPERATING, LLC

BURCH KEELY UNIT #563 WELL
LOCATED 940 FEET FROM THE NORTH LINE
AND 330 FEET FROM THE EAST LINE OF SECTION 18,
TOWNSHIP 17 SOUTH, RANGE 30 EAST, N.M.P.M.,
EDDY COUNTY, NEW MEXICO

Survey Date	3/25/11	Sheet	1	of	1	Sheets
W O Number:	11.11 0101	Dr By:	LA	Rev 1	N/A	
Date	4/5/11	Rel W.O.		11110101	Scale	1"=100'

VICINITY MAP



SCALE: 1" = 2 MILES

SEC. 18 TWP. 17-S RGE. 30-E

SURVEY N.M.P.M.

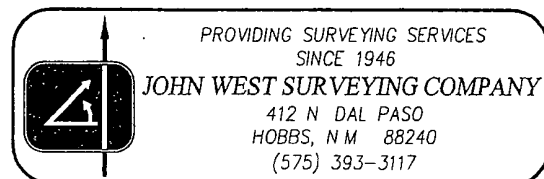
COUNTY EDDY STATE NEW MEXICO

DESCRIPTION 940' FNL & 330' FEL

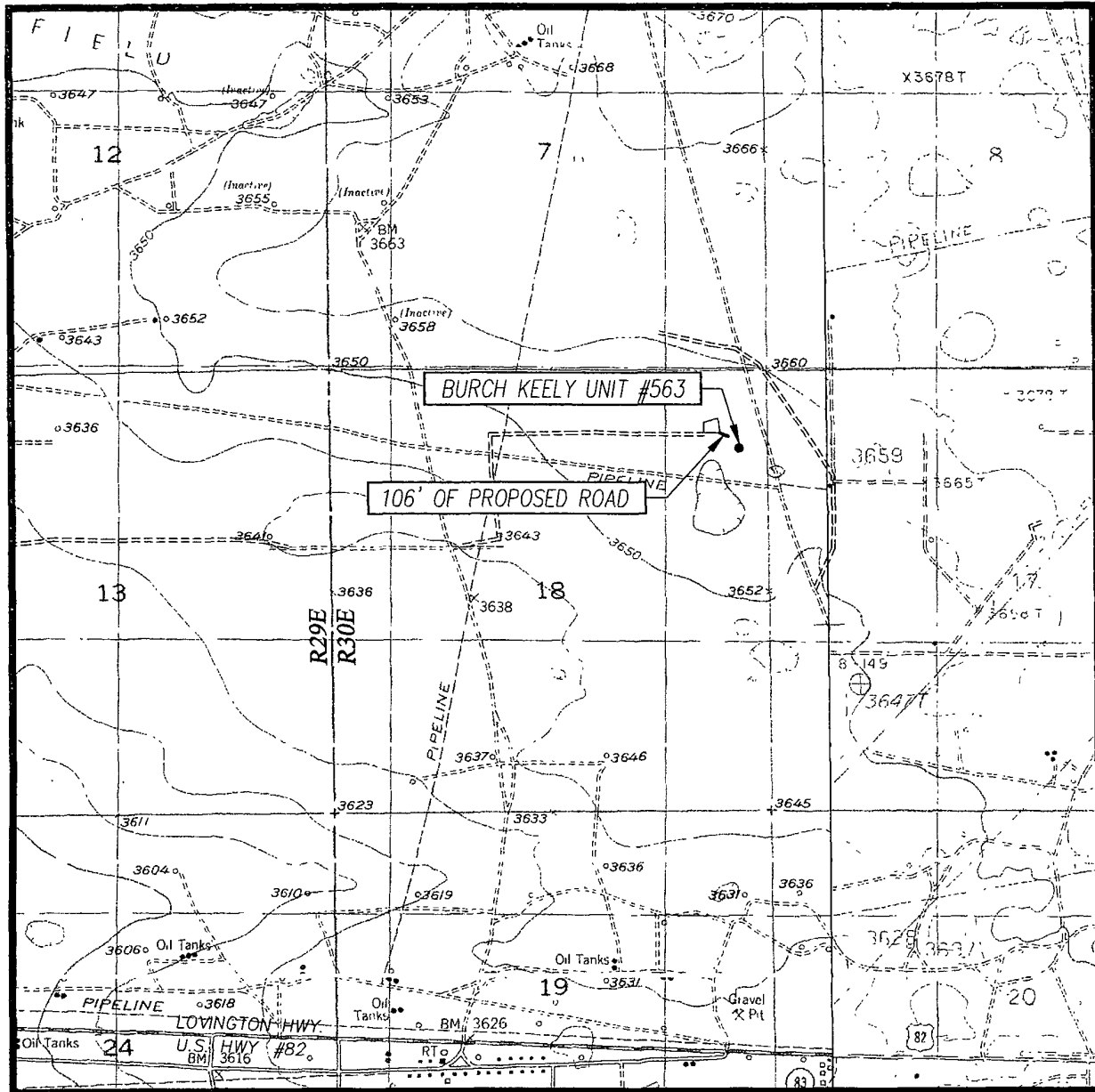
ELEVATION 3653'

OPERATOR COG OPERATING, LLC

LEASE BURCH KEELY UNIT



LOCATION VERIFICATION MAP



SCALE: 1" = 2000'

CONTOUR INTERVAL:
RED LAKE SE, N.M. - 10'

SEC. 18 TWP. 17-S RGE. 30-E

SURVEY N.M.P.M.

COUNTY EDDY STATE NEW MEXICO

DESCRIPTION 940' FNL & 330' FEL

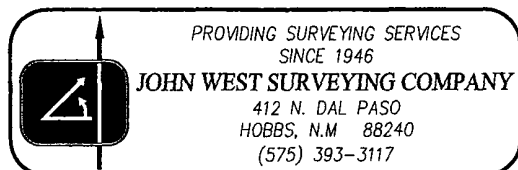
ELEVATION 3653'

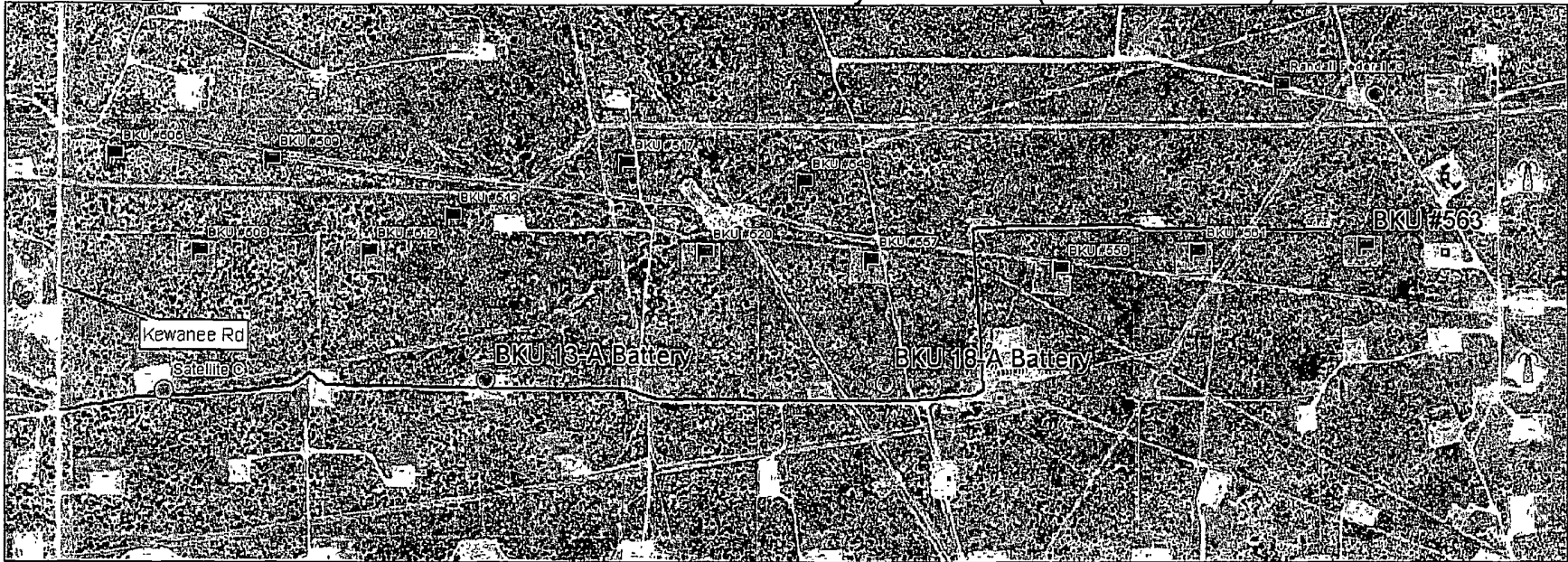
OPERATOR COG OPERATING, LLC

LEASE BURCH KEELY UNIT

U.S.G.S. TOPOGRAPHIC MAP

RED LAKE SE, N.M.

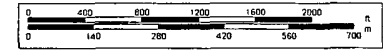




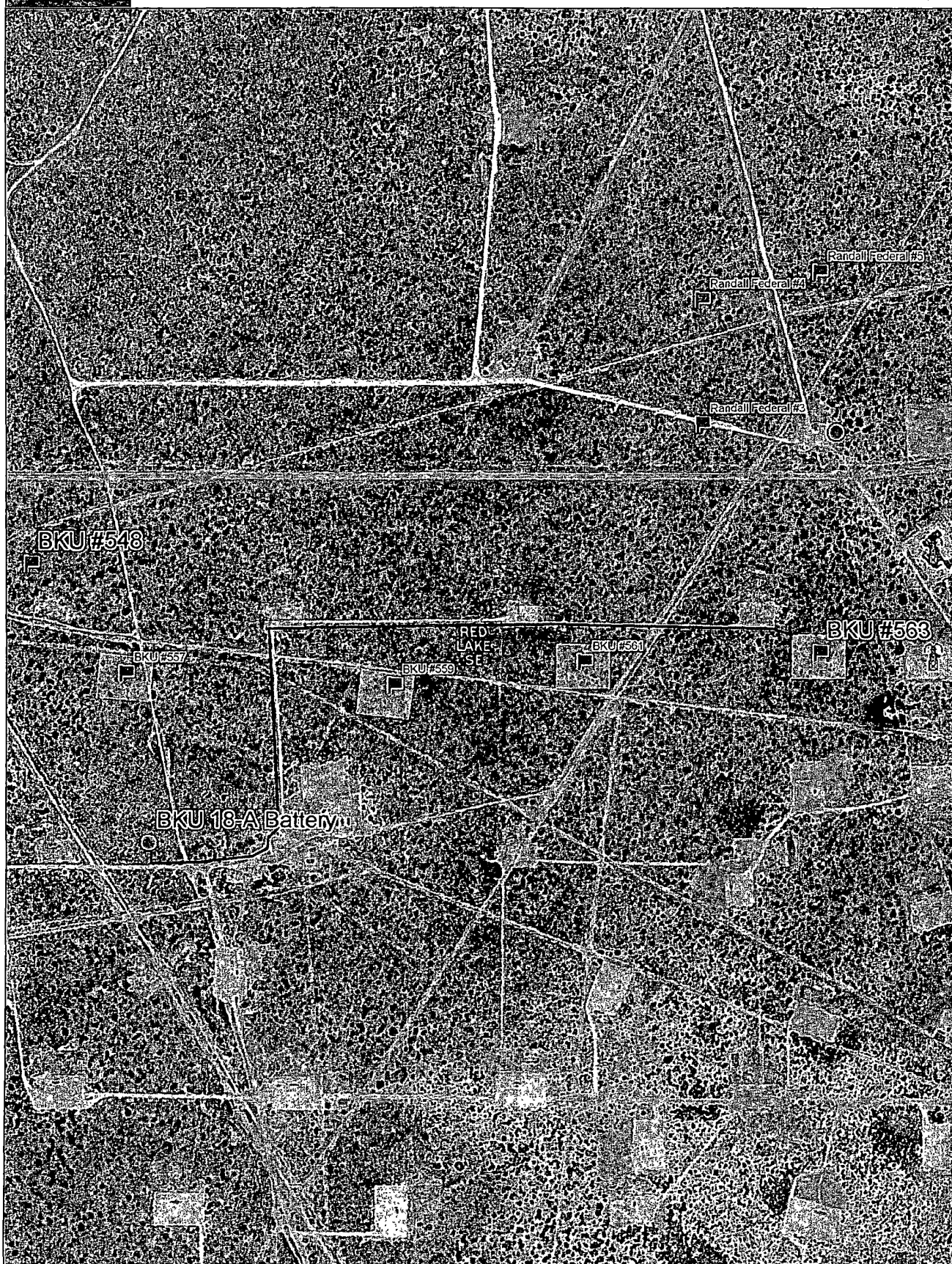
Data use subject to license

© DeLorme XMap® 7

www.delorme.com



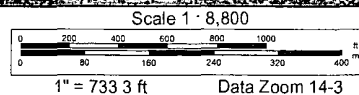
Data Zoom 13-6



Data use subject to license.

© DeLorme. XMap® 7

www.delorme.com



Offset wells to Burch Keely Unit #563

API#	Operator	County	Legal	Lease	Well#	Date Issued	Permitted Depth	Permit TVD	Images	Doc	Total Depth	Well Type	Well Status	Permit#
30-015-38506	COG OPERATING LLC	EDDY	S.7, T.17S, R.30E	RANDALL FEDERAL	5	2/15/2011	5,907	5,900	Yes	link	5,907	PO	Active Permit	TEMP168082950
30-015-38389	COG OPERATING LLC	EDDY	S.7, T.17S, R.30E	RANDALL FEDERAL	003	12/7/2010	5,900		Yes	link	5,900	PO	Active Permit	TEMP8348193
30-015-38355	COG OPERATING LLC	EDDY	S.7, T.17S, R.30E	RANDALL	004	12/6/2010	5,900		Yes	link	5,900	PO	Active Permit	TEMP1955345763
30-015-37975	BURNETT OIL CO., INC.	EDDY	S.8, T.17S, R.30E	GISSLER "B"	63	7/1/2010	6,100		Yes	link	5,772	O	Active Permit	TEMP49072769
30-015-37821	COG OPERATING LLC	EDDY	S.17, T.17S, R.30E	MCINTYRE DK FEDERAL	17H	4/29/2010	8,985	4,950	Yes	link	8,985	PO	Active Permit	TEMP1211392080
30-015-37519	MARBOB ENERGY CORP	EDDY	S.17, T.17S, R.30E	RED FEDERAL	6	1/9/2010	6,000		Yes	link	6,000	O	Active Permit	TEMP1575921687
30-015-37559	MEWBOURNE OIL COMPANY	EDDY	S.7, T.17S, R.30E	SKYHAWK "7" FEDERAL COM	1	11/9/2009	11,200		Yes	link	11,200	PG	Active Permit	TEMP655683973
30-015-37244	BURNETT OIL CO., INC.	EDDY	S.8, T.17S, R.30E	GISSLER "B"	56	8/26/2009	4,250		Yes	link	4,250	PO	Active Permit	TEMP1916938808
30-015-37162	MARBOB ENERGY CORP	EDDY	S.17, T.17S, R.30E	BIRDIE FEDERAL	7	7/10/2009	6,000		Yes	link	6,000	PO	Active Permit	TEMP885711435
30-015-37128	MARBOB ENERGY CORP	EDDY	S.18, T.17S, R.30E	BURCH KEELY UNIT	927	6/15/2009	4,800		Yes	link	5,060	O	Active Permit	TEMP1496858484
30-015-36869	BURNETT OIL CO., INC.	EDDY	S.8, T.17S, R.30E	GISSLER B	47	12/30/2008	6,000		Yes	link	6,000	PO	Active Permit	TEMP1746988937
30-015-36867	MARBOB ENERGY CORPORATION or MARBOB ENERGY CORP	EDDY	S.17, T.17S, R.30E	RED FEDERAL	8	12/19/2008	5,930		Yes	link	5,930	O	Active Permit	TEMP259748076
30-015-36819	BURNETT OIL CO., INC.	EDDY	S.8, T.17S, R.30E	GISSLER B	46	11/27/2008	6,000		Yes	link	6,000	O	Active Permit	TEMP1751416149
30-015-36787	BURNETT OIL CO., INC.	EDDY	S.8, T.17S, R.30E	GISSLER "B"	48	11/10/2008	6,000		Yes	link	6,000	O	Active Permit	TEMP1170166389
30-015-36760	MARBOB ENERGY CORPORATION or MARBOB ENERGY CORP	EDDY	S.17, T.17S, R.30E	BIRDIE FEDERAL	15	10/29/2008	5,930		Yes	link	6,000	O	Active Permit	TEMP697644370
30-015-36706	COG OPERATING LLC	EDDY	S.17, T.17S, R.30E	POLARIS B FEDERAL	4	10/7/2008	5,900		Yes	link	5,926	O	Active Permit	TEMP1458587237
30-015-36670	COG OPERATING, LLC or COG OPERATING LLC	EDDY	S.17, T.17S, R.30E	HOLDER CB FEDERAL	20	9/29/2008	5,900		Yes	link	5,920	O	Active Permit	TEMP1753053329
30-015-36673	COG OPERATING, LLC or COG OPERATING LLC	EDDY	S.17, T.17S, R.30E	CADDO FEDERAL	6	9/29/2008	5,900		Yes	link	5,920	O	Active Permit	TEMP1509459135
30-015-36672	COG OPERATING, LLC or COG OPERATING LLC	EDDY	S.17, T.17S, R.30E	CADDO FEDERAL	8	9/29/2008	5,900		Yes	link	5,925	O	Active Permit	TEMP2067259444
30-015-36575	BURNETT OIL CO., INC.	EDDY	S.8, T.17S, R.30E	GISSLER B	039	8/20/2008	6,000		Yes	link	6,000	O	Active Permit	TEMP367386786
30-015-36576	MARBOB ENERGY CORPORATION or MARBOB ENERGY CORP	EDDY	S.17, T.17S, R.30E	BIRDIE FEDERAL	016	8/18/2008	5,930		Yes	link	5,900	O	Active Permit	TEMP1767630833
	MARBOB ENERGY CORPORATION or MARBOB ENERGY			BIRDIE										

30-015-36441	CORP	EDDY	S:17, T 17S, R 30E	FEDERAL	11	7/18/2008	5,930		Yes	link	6,000	O	Active Permit	TEMP1895304973
30-015-36443	BURNETT OIL CO., INC.	EDDY	S.8, T 17S, R.30E	GISSLER B	42	7/16/2008	6,000		Yes	link	6,000	O	Active Permit	TEMP879752047
30-015-36414	MARBOB ENERGY CORPORATION or MARBOB ENERGY CORP	EDDY	S.17, T 17S, R.30E	BIRDIE FEDERAL	8	7/2/2008	5,930		Yes	link	6,000	O	Active Permit	TEMP2086678524
30-015-36417	MARBOB ENERGY CORPORATION or MARBOB ENERGY CORP	EDDY	S.20, T.17S, R.30E	THUNDERROAD FEDERAL	7	7/2/2008	5,930		Yes	link	6,000	O	Active Permit	TEMP1959864099
30-015-36263	MARBOB ENERGY CORPORATION or MARBOB ENERGY CORP	EDDY	S 18, T 17S, R 30E	BURCH KEELY UNIT	990	4/4/2008	4,800		Yes	link	5,100	O	Active Permit	TEMP261370445
30-015-36271	BURNETT OIL CO., INC.	EDDY	S.8, T.17S, R.30E	GISSLER B	41	3/31/2008	6,000		Yes	link	6,000	O	Active Permit	TEMP2026268295
30-015-36161	MARBOB ENERGY CORPORATION or MARBOB ENERGY CORP	EDDY	S 17, T 17S, R 30E	BIRDIE FEDERAL	12	2/26/2008	5,930		Yes	link	5,907	O	Active Permit	TEMP1790148084
30-015-36182	MARBOB ENERGY CORP	EDDY	S.18, T.17S, R 30E	BURCH KEELY UNIT	992	2/22/2008	4,800		Yes	link	5,000	O	Active Permit	TEMP1287518544
30-015-36183	MARBOB ENERGY CORP	EDDY	S.18, T 17S, R 30E	BURCH KEELY UNIT	993	2/22/2008	4,800		Yes	link	4,800	PO	Active Permit	TEMP289871224
30-015-36181	MARBOB ENERGY CORPORATION or MARBOB ENERGY CORP	EDDY	S:18, T:17S, R 30E	BURCH KEELY UNIT	991	2/22/2008	4,800		Yes	link	5,000	O	Active Permit	TEMP188993533
30-015-35962	COG OPERATING LLC	EDDY	S 17, T:17S, R:30E	HOLDER CB FEDERAL	12	12/5/2007	5,850		Yes	link	5,860	O	Active Permit	TEMP1475472742
30-015-35966	COG OPERATING LLC	EDDY	S 17, T:17S, R 30E	POLARIS B FEDERAL	19	12/5/2007	5,850		Yes	link	5,851	O	Active Permit	TEMP1143696911
30-015-35967	COG OPERATING LLC	EDDY	S.17, T:17S, R:30E	POLARIS B FEDERAL	20	12/5/2007	5,850		Yes	link	5,867	O	Active Permit	TEMP884314856
30-015-35968	COG OPERATING LLC	EDDY	S 17, T:17S, R:30E	CADDO FEDERAL	4	12/5/2007	5,900		Yes	link	5,924	O	Active Permit	TEMP1251673958
30-015-35953	MACK ENERGY CORP	EDDY	S 7, T:17S, R:30E	BRANTLEY FEDERAL	3	11/29/2007	6,100		Yes	link	6,100	PO	Active Permit	TEMP1609718130
30-015-35930	COG OPERATING LLC	EDDY	S:17, T:17S, R:30E	POLARIS B FEDERAL	18	11/15/2007	5,850		Yes	link	5,875	O	Active Permit	TEMP1961177340
30-015-35851	MACK ENERGY CORP	EDDY	S:7, T:17S, R:30E	BRANTLEY FEDERAL	1	10/4/2007	6,500		Yes	link	6,458	O	Active Permit	TEMP583454294
30-015-35954	MACK ENERGY CORP	EDDY	S:7, T 17S, R 30E	BRANTLEY FEDERAL	4	10/4/2007	6,500		Yes	link	6,500	PO	Active Permit	TEMP1762603005
30-015-35701	COG OPERATING LLC	EDDY	S:17, T:17S, R 30E	POLARIS B FEDERAL	14	6/30/2007	6,500		Yes	link	5,997	O	Active Permit	TEMP598326465
30-015-35475	COG OPERATING LLC	EDDY	S:17, T 17S, R.30E	MCINTYRE DK FEDERAL	15	3/7/2007	6,000		Yes	link	6,000	PO	Active	TEMP1051594176
30-015-35476	COG OPERATING LLC	EDDY	S:17, T 17S, R.30E	MCINTYRE DK FEDERAL	16	3/6/2007	6,000		Yes	link	6,000	PO	Active	TEMP1593108467
30-015-35441	MARBOB ENERGY CORP	EDDY	S:19, T.17S, R.30E	BURCH KEELY UNIT	988	2/13/2007	4,800		Yes	link	4,800	PO	Active Permit	TEMP752889196
30-015-35434	MARBOB ENERGY CORP	EDDY	S:18, T.17S, R.30E	BURCH KEELY UNIT	987	1/3/2007	4,800		Yes	link	4,720	O	Active Permit	TEMP320336722
30-015-35272	COG OPERATING LLC	EDDY	S:17, T.17S, R:30E	HOLDER CB FEDERAL	010	12/7/2006	6,000		Yes	link	6,015	O	Active Permit	TEMP2096125189
30-015-35273	COG OPERATING LLC	EDDY	S.17, T 17S, R.30E	HOLDER CB FEDERAL	009	12/7/2006	6,000		Yes	link	6,030	O	Active Permit	TEMP891258555

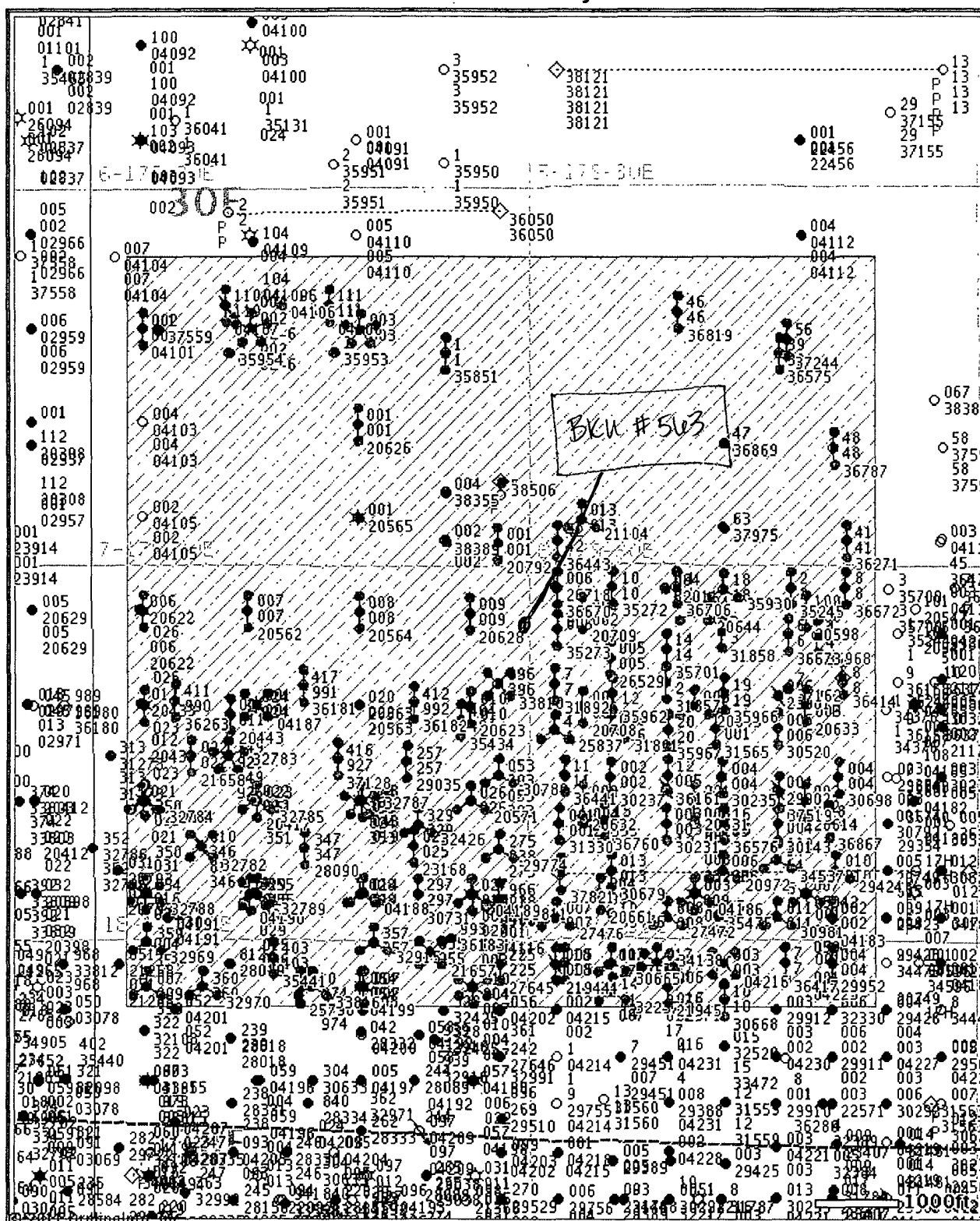
30-015-35245	COG OPERATING LLC	EDDY	S:17, T:17S, R:30E	CADDO FEDERAL	002	11/21/2006	6,000		Yes	link	6,030	O	Active	TEMP472388836
30-015-33810	MARBOB ENERGY CORP	EDDY	S:18, T:17S, R:30E	BURCH KEELY UNIT	965	12/28/2005	4,800		Yes	link	4,800	PO	Active	TEMP2041998017
30-015-34474	MACK ENERGY CORPORATION or MACK ENERGY CORP	EDDY	S:20, T:17S, R:30E	JENKINS B FEDERAL	018	12/13/2005	5,000		No	link	6,401	O	Active Permit	TEMP637108987
30-015-34537	MACK ENERGY CORPORATION or MACK ENERGY CORP	EDDY	S:17, T:17S, R:30E	MCINTYRE DK FEDERAL	014	12/13/2005	5,000		No	link	5,108	O	Active Permit	TEMP1120378020
30-015-34138	MACK ENERGY CORPORATION or MACK ENERGY CORP	EDDY	S:20, T:17S, R:30E	JENKINS B FEDERAL	017R	5/26/2005	5,500		No	link	4,735	O	Active Permit	TEMP1071493002
30-015-33810	MARBOB ENERGY CORP	EDDY	S:18, T:17S, R:30E	BURCH KEELY UNIT	965	9/15/2004	4,800		No	link	4,800	PO	Active	TEMP679565141
30-015-33816	MARBOB ENERGY CORP	EDDY	S:19, T:17S, R:30E	BURCH KEELY UNIT	974	9/15/2004	4,800		No	link	4,710	O	Active	TEMP1121862623
30-015-33811	MARBOB ENERGY CORP	EDDY	S:18, T:17S, R:30E	BURCH KEELY UNIT	966	9/15/2004	4,800		No	link	4,760	O	Active	TEMP387914671
30-015-33810	MARBOB ENERGY CORP	EDDY	S:18, T:17S, R:30E	BURCH KEELY UNIT	965	8/31/2004			No	link	4,800	PO	Active	TEMP364569694
30-015-33816	MARBOB ENERGY CORP	EDDY	S:19, T:17S, R:30E	BURCH KEELY UNIT	974	8/31/2004			No	link	4,710	O	Active	TEMP2004421229
30-015-33811	MARBOB ENERGY CORP	EDDY	S:18, T:17S, R:30E	BURCH KEELY UNIT	966	8/31/2004			No	link	4,760	O	Active	TEMP1843505889
30-015-32970	MARBOB ENERGY CORP	EDDY	S:19, T:17S, R:30E	BURCH KEELY UNIT	360	10/31/2003			No	link	4,730	O	Active	TEMP1541325963
30-015-32969	MARBOB ENERGY CORP	EDDY	S:19, T:17S, R:30E	BURCH KEELY UNIT	359	10/31/2003			No	link	4,728	O	Active	TEMP1595424550
30-015-33051	MACK ENERGY CORPORATION or MACK ENERGY CORP	EDDY	S:20, T:17S, R:30E	JENKINS B FEDERAL	017	10/15/2003	5,500		No	link	5,500	PO	Active Permit	TEMP155509954
30-015-33051	MACK ENERGY CORP	EDDY	S:20, T:17S, R:30E	JENKINS B FEDERAL	017Q	9/30/2003	5,500		No	link	5,500	PO	Active Permit	TEMP1861879805
30-015-32969	MARBOB ENERGY CORP	EDDY	S:19, T:17S, R:30E	BURCH KEELY UNIT	934	8/26/2003	4,800		No	link	4,728	O	Active	TEMP1870303917
30-015-32970	MARBOB ENERGY CORP	EDDY	S:19, T:17S, R:30E	BURCH KEELY UNIT	935	8/26/2003	4,800		No	link	4,730	O	Active	TEMP1934556984
30-015-32915	MARBOB ENERGY CORP	EDDY	S:19, T:17S, R:30E	BURCH KEELY UNIT	357	8/19/2003			No	link	4,720	O	Active	TEMP1200937755
30-015-32381	MACK ENERGY CORPORATION or MACK ENERGY CORP	EDDY	S:20, T:17S, R:30E	JENKINS B FEDERAL	017	8/11/2003	5,500		No	link	5,500	O	Active	TEMP336147915
30-015-32381	MACK ENERGY CORP	EDDY	S:20, T:17S, R:30E	JENKINS B FEDERAL	017	7/31/2003			No	link	5,500	O	Active	TEMP547321984
30-015-32787	MARBOB ENERGY CORP	EDDY	S:18, T:17S, R:30E	BURCH KEELY UNIT	353	7/29/2003			No	link	4,730	O	Active	TEMP1836978264
30-015-32788	MARBOB ENERGY CORP	EDDY	S:18, T:17S, R:30E	BURCH KEELY UNIT	354	7/29/2003			No	link	4,719	O	Active	TEMP1815047576
30-015-32789	MARBOB ENERGY CORP	EDDY	S:18, T:17S, R:30E	BURCH KEELY UNIT	355	7/29/2003			No	link	4,740	O	Active	TEMP1690004184
30-015-32785	MARBOB ENERGY CORP	EDDY	S:18, T:17S, R:30E	BURCH KEELY UNIT	351	7/28/2003			No	link	4,710	O	Active	TEMP1013246193
	MARBOB ENERGY			BURCH KEELY										

30-015-32782	CORP	EDDY	S 18, T:17S, R:30E	UNIT	346	7/1/2003			No	link	4,715	O	Active	TEMP1576883403
30-015-32783	MARBOB ENERGY CORP	EDDY	S 18, T:17S, R:30E	BURCH KEELY UNIT	349	6/30/2003			No	link	4,710	O	Active	TEMP1999687778
30-015-32915	MARBOB ENERGY CORP	EDDY	S:19, T 17S, R 30E	BURCH KEELY UNIT	937	6/25/2003	4,800		No	link	4,720	O	Active	TEMP1632014180
30-015-32782	MARBOB ENERGY CORP	EDDY	S 18, T:17S, R:30E	BURCH KEELY UNIT	810	5/6/2003	4,800		No	link	4,715	O	Active	TEMP1406308729
30-015-32783	MARBOB ENERGY CORP	EDDY	S 18, T 17S, R:30E	BURCH KEELY UNIT	926	5/6/2003	4,800		No	link	4,710	O	Active	TEMP1063882208
30-015-32784	MARBOB ENERGY CORP	EDDY	S:18, T:17S, R 30E	BURCH KEELY UNIT	928	5/6/2003	4,800		No	link	4,710	O	Active	TEMP1136984499
30-015-32785	MARBOB ENERGY CORP	EDDY	S:18, T:17S, R:30E	BURCH KEELY UNIT	929	5/6/2003	4,800		No	link	4,710	O	Active	TEMP1114284314
30-015-32788	MARBOB ENERGY CORP	EDDY	S 18, T:17S, R:30E	BURCH KEELY UNIT	932	5/6/2003	4,800		No	link	4,719	O	Active	TEMP1175459389
30-015-32789	MARBOB ENERGY CORP	EDDY	S 18, T 17S, R 30E	BURCH KEELY UNIT	933	5/6/2003	4,800		No	link	4,740	O	Active	TEMP1171227151
30-015-32787	MARBOB ENERGY CORP	EDDY	S:18, T:17S, R:30E	BURCH KEELY UNIT	931	5/6/2003	4,800		No	link	4,730	O	Active	TEMP1741569218
30-015-32811	MARBOB ENERGY CORP	EDDY	S 18, T:17S, R:30E	BURCH KEELY UNIT	926	5/6/2003	4,800		No	link	4,800	O	Active	TMP000000009530
30-015-28090	MARBOB ENERGY CORP	EDDY	S 18, T:17S, R:30E	BURCH KEELY UNIT	347	5/6/2003			No	link	4,705	O	Active	TEMP324804333
30-015-32784	MARBOB ENERGY CORP	EDDY	S:18, T:17S, R:30E	BURCH KEELY UNIT	350	4/30/2003			No	link	4,710	O	Active	TEMP428812811
30-015-32811	MARBOB ENERGY CORP	EDDY	S:18, T:17S, R 30E	BURCH KEELY UNIT	926	4/30/2003			No	link	4,800	O	Active	TEMP681938119
30-015-04187	CONOCOPHILLIPS COMPANY	EDDY	S 18, T:17S, R:30E	GRAYBURG DEEP UNIT	001	1/1/2003	0		No	link	0	G	Flowing	TEMP436328120
30-015-25796	CONOCOPHILLIPS COMPANY	EDDY	S:19, T:17S, R 30E	GRAYBURG DEEP UNIT	010	1/1/2003			No	link	11,240	PG	Flowing	TEMP472533911
30-015-20643	CBS OPERATING CORPORATION or CBS OPERATING CORP	EDDY	S:17, T:17S, R 30E	LOCO HILLS B FEDERAL	003	9/1/2002			No	link	3,638	O	Pumping	TEMP1334839633
30-015-20644	CBS OPERATING CORPORATION or CBS OPERATING CORP	EDDY	S:17, T:17S, R:30E	LOCO HILLS B FEDERAL	004	9/1/2002			No	link	3,712	O	Active	TEMP1455266039
30-015-32426	MARBOB ENERGY CORP	EDDY	S 18, T:17S, R:30E	BURCH KEELY UNIT	887	8/30/2002	4,800		No	link	4,825	O	Active	TEMP935548483
30-015-32426	MARBOB ENERGY CORP	EDDY	S 18, T:17S, R:30E	BURCH KEELY UNIT	329	7/31/2002			No	link	4,825	O	Active	TEMP1322216889
30-015-32257	MACK ENERGY CORPORATION or MACK ENERGY CORP	EDDY	S:20, T:17S, R 30E	JENKINS B FEDERAL	014	4/11/2002	5,500		No	link	4,780	O	Pumping	TEMP1088924836
30-015-32257	MACK ENERGY CORP	EDDY	S:20, T:17S, R:30E	JENKINS B FEDERAL	014	3/31/2002			No	link	4,780	O	Pumping	TEMP1120296525
30-015-32011	MACK ENERGY CORP	EDDY	S:17, T:17S, R:30E	POLARIS B FEDERAL	004	9/26/2001			No	link		O	Active	TEMP312042190
30-015-31891	MACK ENERGY CORP	EDDY	S:17, T:17S, R:30E	HOLDER CB FEDERAL	006	7/17/2001			No	link	6,211	O	Pumping	TEMP1309827666
30-015-31892	MACK ENERGY CORP	EDDY	S:17, T:17S, R 30E	HOLDER CB FEDERAL	007	7/17/2001			No	link	4,770	O	Pumping	TEMP1678147616
30-015-31857	MACK ENERGY CORP	EDDY	S:17, T:17S, R:30E	POLARIS B FEDERAL	002	6/27/2001			No	link	4,715	O	Pumping	TEMP196094853
	MACK ENERGY			POLARIS B										

30-015-31858	CORP	EDDY	S 17, T:17S, R:30E	FEDERAL	003	6/27/2001			No	link	6,013	O	Pumping	TEMP563914802
30-015-31565	MACK ENERGY CORP	EDDY	S:17, T 17S, R:30E	POLARIS B FEDERAL	001	11/21/2000	5,000		Yes	link	4,740	PO	Pumping	TEMP1337606208
30-015-31330	MARBOB ENERGY CORP	EDDY	S:17, T:17S, R:30E	BIRDIE FEDERAL	001	9/5/2000			No	link	4,772	O	Pumping	TEMP2042958211
30-015-30981	MACK ENERGY CORP	EDDY	S:17, T 17S, R:30E	MCINTYRE DK FEDERAL	011	2/23/2000			No	link	4,746	O	Pumping	TEMP329012419
30-015-30789	MARBOB ENERGY CORP	EDDY	S 18, T 17S, R:30E	BURCH KEELY UNIT	303	10/15/1999			No	link	4,703	O	Pumping	TEMP342032585
30-015-30731	MARBOB ENERGY CORP	EDDY	S:18, T 17S, R:30E	BURCH KEELY UNIT	297	8/20/1999			No	link	4,730	O	Pumping	TEMP1710818980
30-015-27649	MARBOB ENERGY CORP	EDDY	S:18, T:17S, R:30E	BURCH C FEDERAL	053	8/12/1999	0		No	link	4,703	PO	Unknown	TEMP1774965539
30-015-30698	MARBOB ENERGY CORP	EDDY	S:17, T:17S, R:30E	RED FEDERAL	004	7/16/1999			No	link	4,765	O	Pumping	TEMP1478061220
30-015-30679	MACK ENERGY CORP	EDDY	S 17, T:17S, R:30E	MCINTYRE DK FEDERAL	013	6/17/1999			No	link	4,668	O	Pumping	TEMP1258673031
30-015-30668	MACK ENERGY CORP	EDDY	S:20, T 17S, R:30E	JENKINS B FEDERAL	010	6/14/1999			No	link	4,744	U	Pumping	TEMP1898607092
30-015-30665	MACK ENERGY CORP	EDDY	S:20, T:17S, R:30E	JENKINS B FEDERAL	011	6/11/1999			No	link	4,710	U	Pumping	TEMP956245071
30-015-28091	MARBOB ENERGY CORP	EDDY	S:18, T:17S, R:30E	BURCH KEELY UNIT	810	2/10/1999			No	link	4,715	X	Cancelled	TEMP905002304
30-015-29901	SOUTHWEST ROYALTIES INC	EDDY	S:17, T 17S, R:30E	ARCO FEDERAL	006	1/12/1999			No	link		X	Cancelled	TEMP4104270
30-015-29902	SOUTHWEST ROYALTIES INC	EDDY	S:17, T:17S, R:30E	MCINTYRE FEDERAL	004	1/12/1999			No	link		X	Cancelled	TEMP128762914
30-015-30520	MARBOB ENERGY CORP	EDDY	S:17, T:17S, R:30E	BIRDIE FEDERAL	006	11/30/1998			No	link	4,729	O	Pumping	TEMP1403677394
30-015-29335	SOUTHWEST ROYALTIES INC	EDDY	S:17, T 17S, R:30E	ARCO FEDERAL	005	5/27/1998			No	link		X	Cancelled	TEMP1086844397
30-015-29355	SOUTHWEST ROYALTIES INC	EDDY	S 17, T:17S, R:30E	ARCO FEDERAL	004	5/27/1998			No	link		PO	Unknown	TEMP1959444153
30-015-30231	MARBOB ENERGY CORP	EDDY	S:17, T 17S, R:30E	BIRDIE FEDERAL	003	4/29/1998			No	link	4,900	O	Pumping	TEMP1764915333
30-015-30235	MARBOB ENERGY CORP	EDDY	S:17, T:17S, R:30E	BIRDIE FEDERAL	004	4/29/1998			No	link	4,735	O	Pumping	TEMP1874568770
30-015-30237	MARBOB ENERGY CORP	EDDY	S:17, T:17S, R:30E	BIRDIE FEDERAL	002	4/29/1998			No	link	4,723	O	Pumping	TEMP2066558471
30-015-30143	MARBOB ENERGY CORP	EDDY	S 17, T:17S, R:30E	RED FEDERAL	002	3/6/1998			No	link	4,815	O	Pumping	TEMP697252460
30-015-04107	RODNEY B WEBB DBA WEBB OIL CO	EDDY	S:7, T 17S, R:30E	SQUARE LAKE 12 UNIT	110	1/1/1998	0		No	link	0	I	Injection Well	TEMP687877518
30-015-04108	RODNEY B WEBB DBA WEBB OIL CO	EDDY	S 7, T:17S, R:30E	SQUARE LAKE 12 UNIT	111	1/1/1998	0		No	link	0	PO	Pumping	TEMP712886197
30-015-29952	MARBOB ENERGY CORP	EDDY	S:20, T:17S, R:30E	THUNDER ROAD FEDERAL	004	11/18/1997			No	link	4,800	O	Pumping	TEMP959081688
30-015-27651	MARBOB ENERGY CORP	EDDY	S 18, T 17S, R:30E	BURCH AA FEDERAL	038	8/1/1997	0		No	link	4,747	PO	Unknown	TEMP1538344966
30-015-29774	MARBOB ENERGY CORP	EDDY	S:18, T:17S, R:30E	BURCH KEELY UNIT	275	8/1/1997			No	link	4,748	O	Pumping	TEMP728171052
30-015-29424	MACK ENERGY CORP	EDDY	S 17, T:17S, R:30E	MCINTYRE DK FEDERAL	010	3/5/1997			No	link	4,761	O	Pumping	TEMP770718718
30-015-29035	MARBOB ENERGY CORP	EDDY	S:18, T:17S, R:30E	BURCH KEELY UNIT	257	7/3/1996			No	link	4,875	O	Pumping	TEMP916739410
30-015-28019	MARBOB ENERGY CORP	EDDY	S:19, T 17S, R:30E	BURCH KEELY UNIT	812	6/21/1996			No	link		PO	Unknown	TEMP1397365763
	MARBOB ENERGY			BURCH KEELY										

30-015-27645	CORP	EDDY	S:19, T:17S, R:30E	UNIT	225	7/26/1994			No	link	5,050	O	Pumping	TEMP304455243
30-015-27472	MACK ENERGY CORP	EDDY	S:17, T:17S, R:30E	MCINTYRE DK FEDERAL	008	3/2/1994			No	link	5,100	O	Pumping	TEMP1552940591
30-015-27476	MACK ENERGY CORP	EDDY	S:17, T:17S, R:30E	MCINTYRE DK FEDERAL	007	3/2/1994			No	link	5,113	O	Pumping	TEMP2082197665
30-015-26529	MACK ENERGY CORP	EDDY	S:17, T:17S, R:30E	HOLDER CB FEDERAL	005	2/1/1991			No	link	4,700	PO	Pumping	TEMP1089164925
30-015-25837	MACK ENERGY CORP	EDDY	S:17, T:17S, R:30E	HOLDER CB FEDERAL	004	1/1/1988			No	link	5,850	O	Pumping	TEMP68932315
30-015-23168	MARBOB ENERGY CORP	EDDY	S:18, T:17S, R:30E	BURCH KEELY UNIT	025	3/1/1981	0		No	link	3,600	O	Pumping	TEMP1262964397
30-015-21944	MACK ENERGY CORP	EDDY	S:20, T:17S, R:30E	JENKINS B FEDERAL	005	2/1/1977	0		No	link	3,693	O	Plugged	TEMP2068269845
30-015-21945	MACK ENERGY CORP	EDDY	S:20, T:17S, R:30E	JENKINS B FEDERAL	006	2/1/1977	0		No	link	3,698	O	Pumping	TEMP1871189467
30-015-21657	MARBOB ENERGY CORP	EDDY	S:19, T:17S, R:30E	BURCH KEELY UNIT	055	3/1/1976	0		No	link	3,625	O	Pumping	TEMP665325118
30-015-21658	MARBOB ENERGY CORP	EDDY	S:18, T:17S, R:30E	BURCH KEELY UNIT	022	3/1/1976	0		No	link	3,300	O	Pumping	TEMP791907506
30-015-21104	BURNETT OIL CO INC	EDDY	S:8, T:17S, R:30E	GISSLER B	013	11/1/1974	0		No	link	2,870	O	Pumping	TEMP1383533939
30-015-20972	MACK ENERGY CORP	EDDY	S:17, T:17S, R:30E	MCINTYRE DK FEDERAL	006	12/1/1973	0		No	link	4,329	O	Pumping	TEMP1180986046
30-015-04188	MARBOB ENERGY CORP	EDDY	S:18, T:17S, R:30E	BURCH KEELY UNIT	028	9/1/1973	0		No	link	0	O	Temporarily Abandoned	TEMP1454404358
30-015-04189	MARBOB ENERGY CORP	EDDY	S:18, T:17S, R:30E	BURCH KEELY UNIT	027	8/1/1973	0		No	link	11,422	O	Pumping	TEMP1330899961
30-015-26717	STEVENS OPERATING CORPORATION or HANAGAN PETROLEUM CORP	EDDY	S:7, T:17S, R:30E	PRE-ONGARD WELL	002	1/1/1970			No	link		PO	Active Permit	TEMP430777921
30-015-26718	STEVENS OPERATING CORPORATION or HANAGAN PETROLEUM CORP	EDDY	S:17, T:17S, R:30E	PRE-ONGARD WELL	006	1/1/1970			No	link		PO	Active Permit	TEMP399613260
30-015-27475	STEVENS OPERATING CORPORATION or HANAGAN PETROLEUM CORP	EDDY	S:20, T:17S, R:30E	PRE-ONGARD WELL	007	1/1/1970			No	link		PO	Active Permit	TEMP853216889
30-015-04190	MARBOB ENERGY CORP	EDDY	S:18, T:17S, R:30E	BURCH KEELY UNIT	029	11/1/1949	0		No	link	0	O	Temporarily Abandoned	TEMP122788414

Offset wells to Burch Keely Unit #563



© 2011 Drilling Info, Inc. All rights reserved. All data and information is provided "As Is" and subject to the [DI subscription agreement](#).

