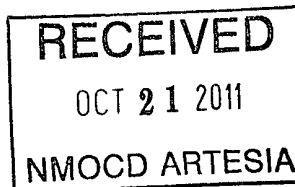


District I
1625 N French Dr., Hobbs, NM 88240
Phone (575) 393-6161 Fax (575) 393-0720
District II
811 S First St., Artesia, NM 88210
Phone (575) 748-1283 Fax (575) 748-9720
District III
1000 Rio Brazos Road, Aztec, NM 87410
Phone (505) 334-6178 Fax (505) 334-6170
District IV
1220 S St. Francis Dr., Santa Fe, NM 87505
Phone (505) 476-3460 Fax (505) 476-3462

State of New Mexico
Energy Minerals and Natural Resources
Oil Conservation Division
1220 South St. Francis Dr.
Santa Fe, NM 87505

Form C-101
Revised August 1, 2011



Permit

APPLICATION FOR PERMIT TO DRILL, RE-ENTER, DEEPEN, PLUGBACK, OR ADD A ZONE

¹ Operator Name and Address RKI Exploration & Production, LLC. 3817 NW Expressway, Suite 950, Oklahoma City, Oklahoma 73112		² OGRID Number 246289
		³ API Number 30-015-36724
⁴ Property Code 36900	⁵ Property Name RDX 16	⁶ Well No. 7

⁷ Surface Location

UL - Lot	Section	Township	Range	Lot Idn	Feet from	N/S Line	Feet From	E/W Line	County
H	16	26S	30E		1650	N	990	E	Eddy

⁸ Pool Information

Brushy Draw Delaware East

Additional Well Information

⁹ Work Type N	¹⁰ Well Type 0	¹¹ Cable/Rotary R	¹² Lease Type S	¹³ Ground Level Elevation 3071
¹⁴ Multiple No	¹⁵ Proposed Depth 7524'	¹⁶ Formation Delaware	¹⁷ Contractor Silver Oak	¹⁸ Spud Date
Depth to Ground water 450'		Distance from nearest fresh water well		Distance to nearest surface water

¹⁹ Proposed Casing and Cement Program

Type	Hole Size	Casing Size	Casing Weight/ft	Setting Depth	Sacks of Cement	Estimated TOC
	17 1/2"	13 3/8"	54.5#	450	399	Surface
	12 1/4"	9 5/8"	40#	3349	1301	Surface
	7 5/8"	5 1/2"	17#	7524	732	2800'

Casing/Cement Program: Additional Comments

H2S levels are not expected to be high enough to require a H2S program.

Proposed Blowout Prevention Program

Type	Working Pressure	Test Pressure	Manufacturer
13 5/8" Double Ram 2FZ35-35	5,000#	3,000#	Guanghan

I hereby certify that the information given above is true and complete to the best of my knowledge and belief.
I further certify that the drilling pit will be constructed according to NMOCD guidelines ☐, a general permit ☐, or an (attached) alternative OCD-approved plan ☒.

Printed name: Barry W. Hunt

Barry W. Hunt

Title: Permit Agent

E-mail Address: specialtpermitting@gmail.com

Date: 10/21/11

Phone (575) 361-4078

OIL CONSERVATION DIVISION

Approved By:

Title:

Approved Date:

Expiration Date:

Conditions of Approval Attached

DISTRICT I
1625 N. French Dr., Hobbs, NM 88240

DISTRICT II
1301 W. Grand Avenue, Artesia, NM 88210

DISTRICT III
1000 Rio Brazos Rd., Aztec, NM 87410

DISTRICT IV
1220 S. St. Francis Dr., Santa Fe, NM 87505

State of New Mexico
Energy, Minerals and Natural Resources Department

Form C-102
Revised October 12, 2005

Submit to Appropriate District Office
State Lease - 4 Copies
Fee Lease - 3 Copies

OIL CONSERVATION DIVISION
1220 South St. Francis Dr.
Santa Fe, New Mexico 87505

☐ AMENDED REPORT

WELL LOCATION AND ACREAGE DEDICATION PLAT

API Number 30-015-36724	Pool Code 8090	Pool Name Brushy Draw Delaware East
Property Code	Property Name RDX "16"	Well Number 7
OGRID No. 246289	Operator Name RKI EXPLORATION & PRODUCTION	Elevation 3071'

Surface Location

UL or lot No.	Section	Township	Range	Lot Idn	Feet from the	North/South line	Feet from the	East/West line	County
H	16	26 S	30 E		1650	NORTH	990	EAST	EDDY

Bottom Hole Location If Different From Surface

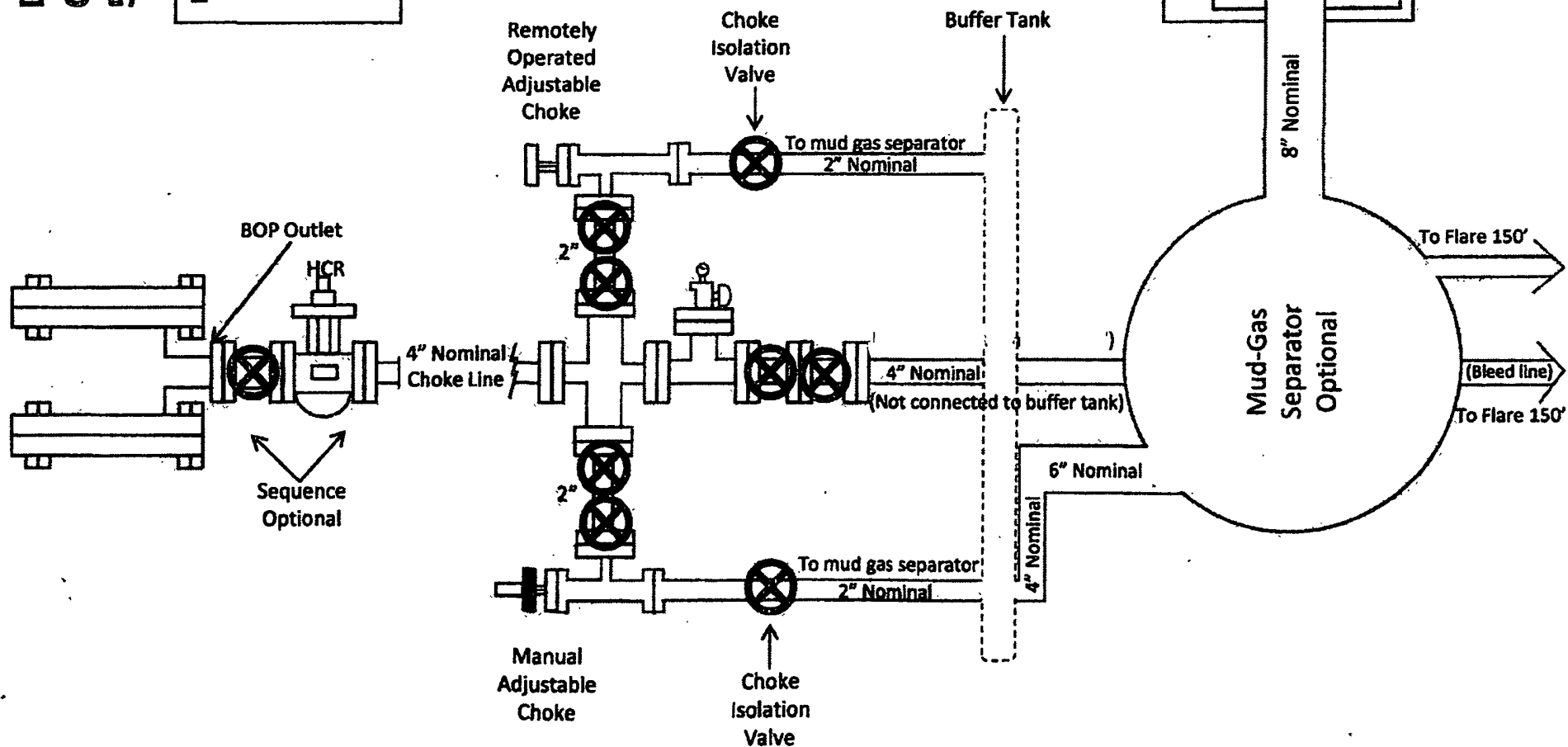
UL or lot No.	Section	Township	Range	Lot Idn	Feet from the	North/South line	Feet from the	East/West line	County
Dedicated Acres 40	Joint or Infill	Consolidation Code	Order No.						

NO ALLOWABLE WILL BE ASSIGNED TO THIS COMPLETION UNTIL ALL INTERESTS HAVE BEEN CONSOLIDATED
OR A NON-STANDARD UNIT HAS BEEN APPROVED BY THE DIVISION

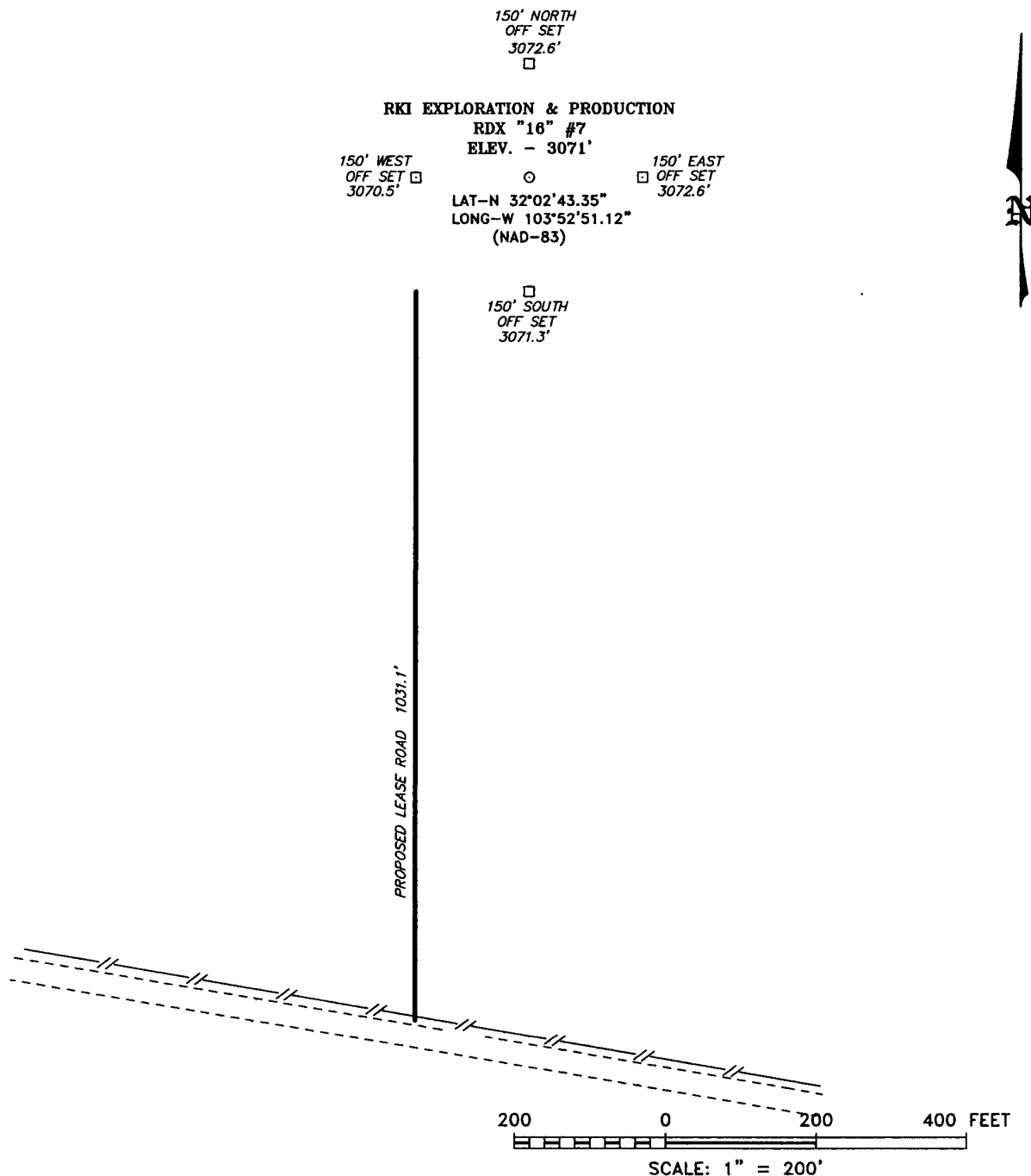
<p>SURFACE LOCATION LAT N.: 32°02'43.35" LONG W.: 103°52'51.17" SPC N.: 380536.320 E.: 681524.253 (NAD-83)</p> <p>RECEIVED OCT 21 2011 NMOCD ARTESIA</p>	<p>OPERATOR CERTIFICATION</p> <p>I hereby certify that the information contained herein is true and complete to the best of my knowledge and belief, and that this organization either owns a working interest or unleased mineral interest in the land including the proposed bottom hole location pursuant to a contract with an owner of such a mineral or working interest, or to a voluntary pooling agreement or a compulsory pooling order heretofore entered by the division.</p> <p><i>Barry W. Hunt</i> 10/21/11 Signature Date</p> <p>Barry W. Hunt Printed Name</p>	
	<p>SURVEYOR CERTIFICATION</p> <p>I hereby certify that the well location shown on this plat was plotted from field notes of actual surveys made by me or under my supervision, and that the same is true and correct to the best of my belief.</p> <p>JULY 25, 2008</p> <p>Date Surveyed</p> <p><i>Gary L. Jones</i> Signature & Seal Professional Surveyor</p> <p>7977 Certificate No.</p> <p>7977 BASIN SURVEYS</p>	
	<p>7977 Certificate No.</p> <p>7977 BASIN SURVEYS</p>	
	<p>7977 Certificate No.</p> <p>7977 BASIN SURVEYS</p>	

Drilling Operations Choke Manifold 5M Service

Exhibit E-1 – Choke Manifold Diagram



SECTION 16, TOWNSHIP 26 SOUTH, RANGE 30 EAST, N.M.P.M.,
EDDY COUNTY, NEW MEXICO.



DIRECTIONS TO LOCATION:

FROM THE JUNCTION OF HWY 285 AND LONGHORN,
GO EAST 3.9 MILES TO SECOND ROAD ON RIGHT
PAST A LOW WATER CROSSING, GO EAST 5.9 MILES
TO LEAS ROAD, ON LEAS ROAD GO SOUTH 1.2
MILES TO 2-TRACK, GO EAST TO PROPOSED
LOCATION.

BASIN SURVEYS P.O. BOX 1786-HOBBS, NEW MEXICO

W.O. Number: 19983

Drawn By: J. M. SMALL

Date: 07-30-2008

Disk: JMS 19983

RKI EXPLORATION & PRODUCTION

REF: RDX "16" #7 / Well Pad Topo

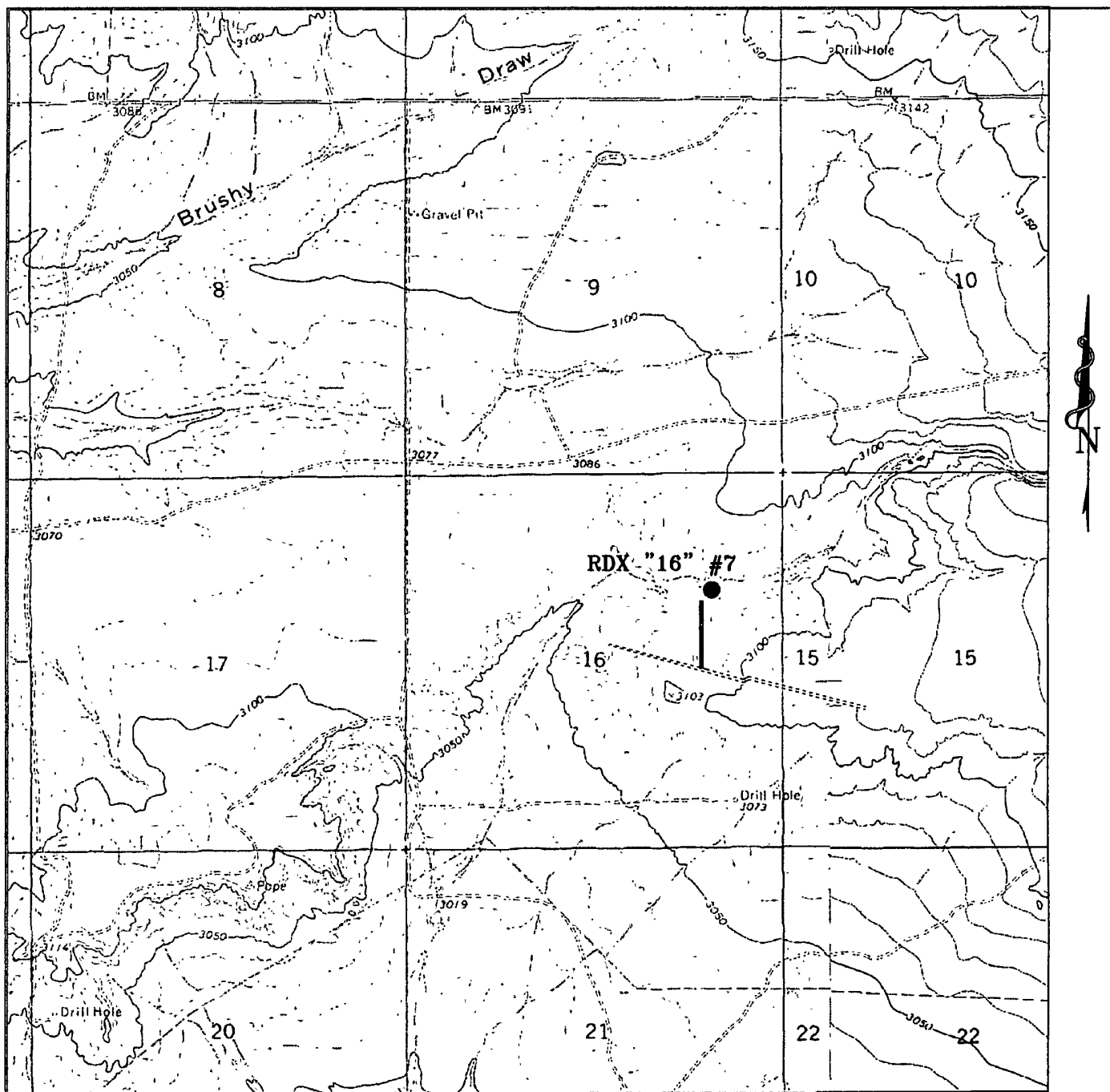
THE RDX "16" #7 LOCATED 1650' FROM

THE NORTH LINE AND 990' FROM THE EAST LINE OF
SECTION 16, TOWNSHIP 26 SOUTH, RANGE 30 EAST,

N.M.P.M., EDDY COUNTY, NEW MEXICO.

Survey Date: 07-27-2008

Sheet 1 of 1 Sheets



RDX "16" #7

Located at 1650' FNL AND 990' FEL
Section 16, Township 26 South, Range 30 East,
N.M.P.M., Eddy County, New Mexico.



focused on excellence
in the oilfield

P.O. Box 1786
1120 N. West County Rd.
Hobbs, New Mexico 88241
(505) 393-7316 - Office
(505) 392-3074 - Fax
basinsurveys.com

W.O. Number: 19983

Survey Date: 07-27-2008

Scale: 1" = 2000'

Date: 07-30-2008

RKI
**EXPLORATION &
PRODUCTION**

*RKI
EXPLORATION &
PRODUCTION*

RDX 16-7

