

District I  
1625 N. French Dr., Hobbs, NM 88240  
District II  
1301 W. Grand Avenue, Artesia, NM 88210  
District III  
1000 Rio Brazos Road, Aztec, NM 87410  
District IV  
1220 S. St. Francis Dr., Santa Fe, NM 87505

State of New Mexico  
Energy Minerals and Natural Resources

Form C-101  
June 16, 2008

Oil Conservation Division  
1220 South St. Francis Dr.  
Santa Fe, NM 87505

Submit to appropriate District Office

☐ AMENDED REPORT

**APPLICATION FOR PERMIT TO DRILL, RE-ENTER, DEEPEN, PLUGBACK, OR ADD A ZONE**

<sup>1</sup> Operator Name and Address Yates Petroleum Corporation 105 South Fourth Street Artesia, NM 88210		<sup>2</sup> OGRID Number 025575
<sup>3</sup> Property Code 34689	<sup>3</sup> Property Name NDDUP Unit	<sup>3</sup> API Number 30-015-28542
<sup>9</sup> Proposed Pool 1 N. Seven Rivers; Glorieta-Yeso		<sup>10</sup> Proposed Pool 2

**<sup>7</sup> Surface Location**

UL or lot no.	Section	Township	Range	Lot Idn	Feet from the	North/South line	Feet from the	East/West line	County
I	16	19S	25E		1980	South	660	East	Eddy

**<sup>8</sup> Proposed Bottom Hole Location If Different From Surface**

UL or lot no.	Section	Township	Range	Lot Idn	Feet from the	North/South line	Feet from the	East/West line	County

**Additional Well Information**

<sup>11</sup> Work Type Code P	<sup>12</sup> Well Type Code O	<sup>13</sup> Cable/Rotary N/A	<sup>14</sup> Lease Type Code S	<sup>15</sup> Ground Level Elevation 3476'GL
<sup>16</sup> Multiple N	<sup>17</sup> Proposed Depth N/A	<sup>18</sup> Formation Canyon	<sup>19</sup> Contractor N/A	<sup>20</sup> Spud Date N/A

**<sup>21</sup> Proposed Casing and Cement Program**

Hole Size	Casing Size	Casing weight/foot	Setting Depth	Sacks of Cement	Estimated TOC
IN PLACE					

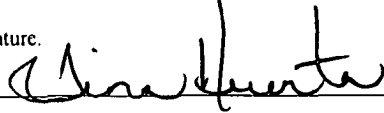
<sup>22</sup> Describe the proposed program. If this application is to DEEPEN or PLUG BACK, give the data on the present productive zone and proposed new productive zone. Describe the blowout prevention program, if any. Use additional sheets if necessary

Yates Petroleum Corporation plans to plugback and recompleat this well as follows: MIRU any safety equipment as needed. NU BOP. Make a GR/JB run to 7650'. Set a CIBP at 7634' with 35' cement on top. Spot a 160' cement plug from 5802'-5962' across Wolfcamp and a 140' cement plug from 3614'-3754' across Bone Spring. WOC and pressure test casing to 3800 psi. Perforate Yeso 2296'-2380' for a total of 85 holes. Stimulate as needed. Flow the well back and allow the well to clean up. TIH with a bit to wash sand down to the PBTD. TIH with pumping equipment and turn well to production.

**RECEIVED**  
MAR 11 2011  
NMOCD ARTESIA

<sup>23</sup> I hereby certify that the information given above is true and complete to the best of my knowledge and belief

Signature:



Printed name: Tina Huerta

Title: Regulatory Compliance Supervisor

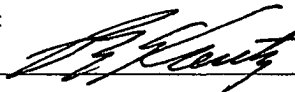
E-mail Address: tinah@yatespetroleum.com

Date March 10, 2011

Phone: 575-748-4168

**OIL CONSERVATION DIVISION**

Approved by:



Title:

PETROLEUM ENGINEER

Approval Date:

03/04/11

Expiration Date:

03/04/13

Conditions of Approval Attached ☐

DEC 13 2011

WELL NAME: NDDUP Unit #21 FIELD: Dagger Draw

LOCATION: 1,980' FSL & 660' FEL of Section 16-19S-25E Eddy Co., NM

GL: 3,621' ZERO:          KB:         

SPUD DATE: 1/15/90 COMPLETION DATE: 2/26/90

COMMENTS: API No.: 30-015-28542

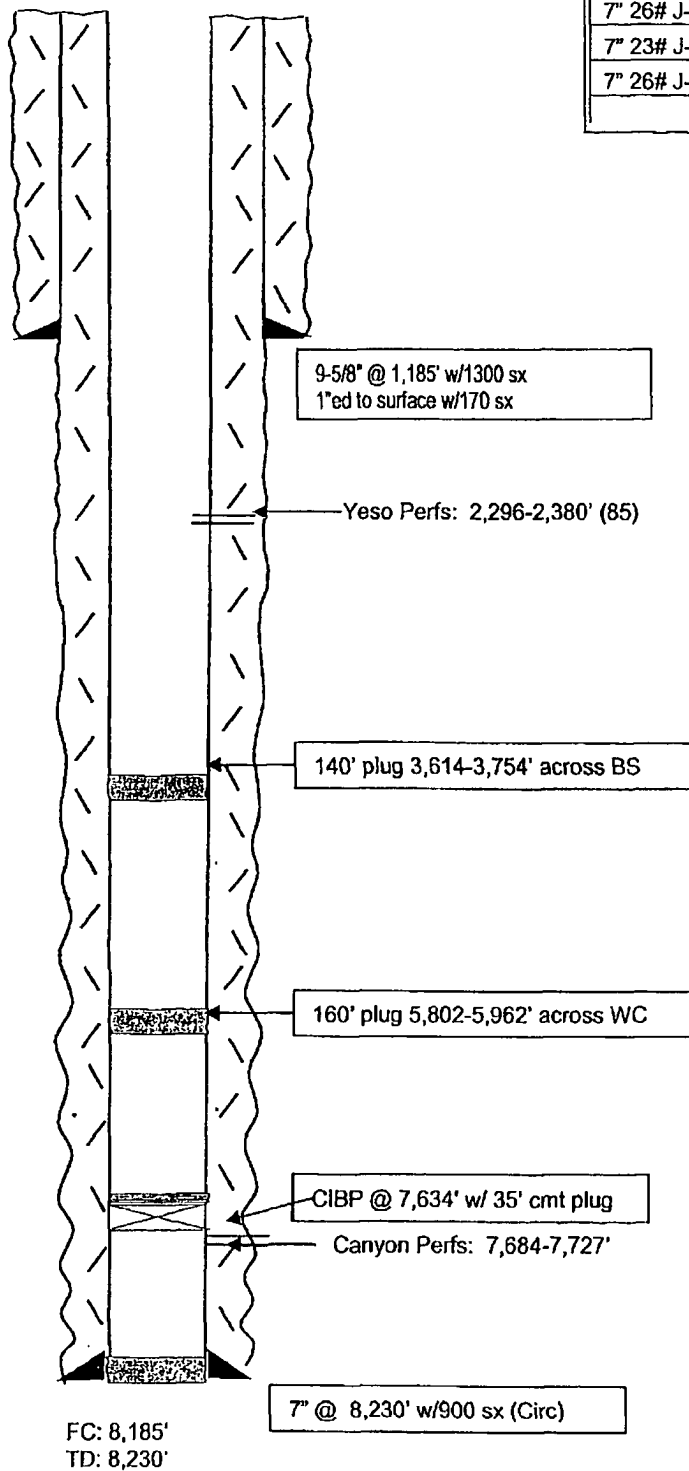
(Formerly Amole AMM St Com #4)

#### CASING PROGRAM

9-5/8" 36# J-55	1,185'
7" 26# N-80 (SB) 756'	
7" 26# N-80 (V) 81'	
7" 26# J-55 (V) 2,021'	
7" 23# J-55 (V) 4,921'	
7" 26# J-55 (V) 459'	8,230'

14-3/4" Hole

8-3/4" Hole



**After**

#### TOPS

SA	762'
Glorieta	2,302'
BS	3,704'
WC	5,912'
Canyon	7,650'

Not to Scale  
3/31/10  
DC/Hill

DISTRICT I --- CHECKLIST FOR INTENTS TO DRILL

Operator YATES PETROLEUM CORP OGRID # 25575  
 Well Name & # ND DUP UNIT # 21 Surface Type (F) (S) (S)  
 Location: UL B Sect 16 Township 19 s, RNG 25 e, Sub-surface Type (F) (S) (S)

A. Date C101 rec'd    /   /    C101 reviewed    /   /   

B. 1. Check mark, Information is OK on Forms:

OGRID X BONDING X PROP CODE X WELL # X SIGNATURE X

2. Inactive Well list as of: 4/4/11 # wells 2352 # Inactive wells 3

a. District Grant APD but see number of inactive wells:

No letter required X; Sent Letter to Operator    , to Santa Fe    

3. Additional Bonding as of: 4/4/11

a. District Denial because operator needs addition bonding:

No Letter required X; Sent Letter to Operator    , To Santa Fe    

b. District Denial because of Inactive well list and Financial Assurance:

No Letter required X; Sent Letter to Operator    , To Santa Fe    

C. C102 YES X, NO    , Signature X

1. Pool N. SEVEN RIVERS; GULFVIEW, Code 97565

a. Dedicated acreage 40, What Units    

b. SUR. Location Standard X; Non-Standard Location    

c. Well shares acres: Yes    , No X # of wells     plus this well #    

2. 2<sup>nd</sup>. Operator in same acreage, Yes    , No X

Agreement Letter    , Disagreement letter    

3. Intent to Directional Drill Yes    , No X

a. Dedicated acreage    , What Units    

b. Bottomhole Location Standard    , Non-Standard Bottomhole    

4. Downhole Commingle: Yes    , No X

a. Pool #2    , Code    , Acres    

Pool #3    , Code    , Acres    

Pool #4    , Code    , Acres    

5. POTASH Area Yes    , No X

D. Blowout Preventer Yes    , No     need

E. H2S Yes    , No     need

F. C144 Pit Registration Yes    , No X need

G. Does APD require Santa Fe Approval:

1. Non-Standard Location: Yes    , No X, NSL #    

2. Non-Standard Proration: Yes    , No X, NSP #    

3. Simultaneous Dedication: Yes    , No X, SD #    

Number of wells     Plus #    

4. Injection order Yes    , No X; PMX #     or WFX #    

5. SWD order Yes    , NO X; SWD #    

6. DHC from SF     ---    ; -DHC-HOB    ; Holding    

7. OCD Approval Date    /   /   

API #30-0 15-28542

8. Reviewers