

DISTRICT I
1625 N. French Dr., Hobbs, NM 88240
Phone (575) 393-6161 Fax: (575) 393-0720
DISTRICT II
811 S First St., Artesia, NM 88210
Phone: (575) 748-1283 Fax: (575) 334-6170
DISTRICT III
1000 Rio Brazos Road, Aztec, NM 87410
Phone: (505) 334-6178 Fax: (505) 334-6170
DISTRICT IV
1220 S St. Francis Dr., Santa Fe, NM 87505
Phone (505) 476-3460 Fax (505) 476-3462

State of New Mexico
Energy, Minerals & Natural Resources Department
OIL CONSERVATION DIVISION
1220 South St. Francis Dr.
Santa Fe, New Mexico 87505

Form C-102
Revised August 1, 2011
Submit one copy to appropriate
District Office

☐ AMENDED REPORT

WELL LOCATION AND ACREAGE DEDICATION PLAT

API Number 30-015-39739	Pool Code 96830	Pool Name Artesia, Glorieta, Yaso (o)
Property Code 308712	Property Name D STATE	Well Number 66
OGRID No. 873	Operator Name APACHE CORPORATION	Elevation 3678'

Surface Location

UL or lot No	Section	Township	Range	Lot Idn	Feet from the	North/South line	Feet from the	East/West line	County
E	36	17-S	28-E		2310	NORTH	990	WEST	EDDY

Bottom Hole Location If Different From Surface

UL or lot No.	Section	Township	Range	Lot Idn	Feet from the	North/South line	Feet from the	East/West line	County
Dedicated Acres 40	Joint or Infill	Consolidation Code	Order No.						

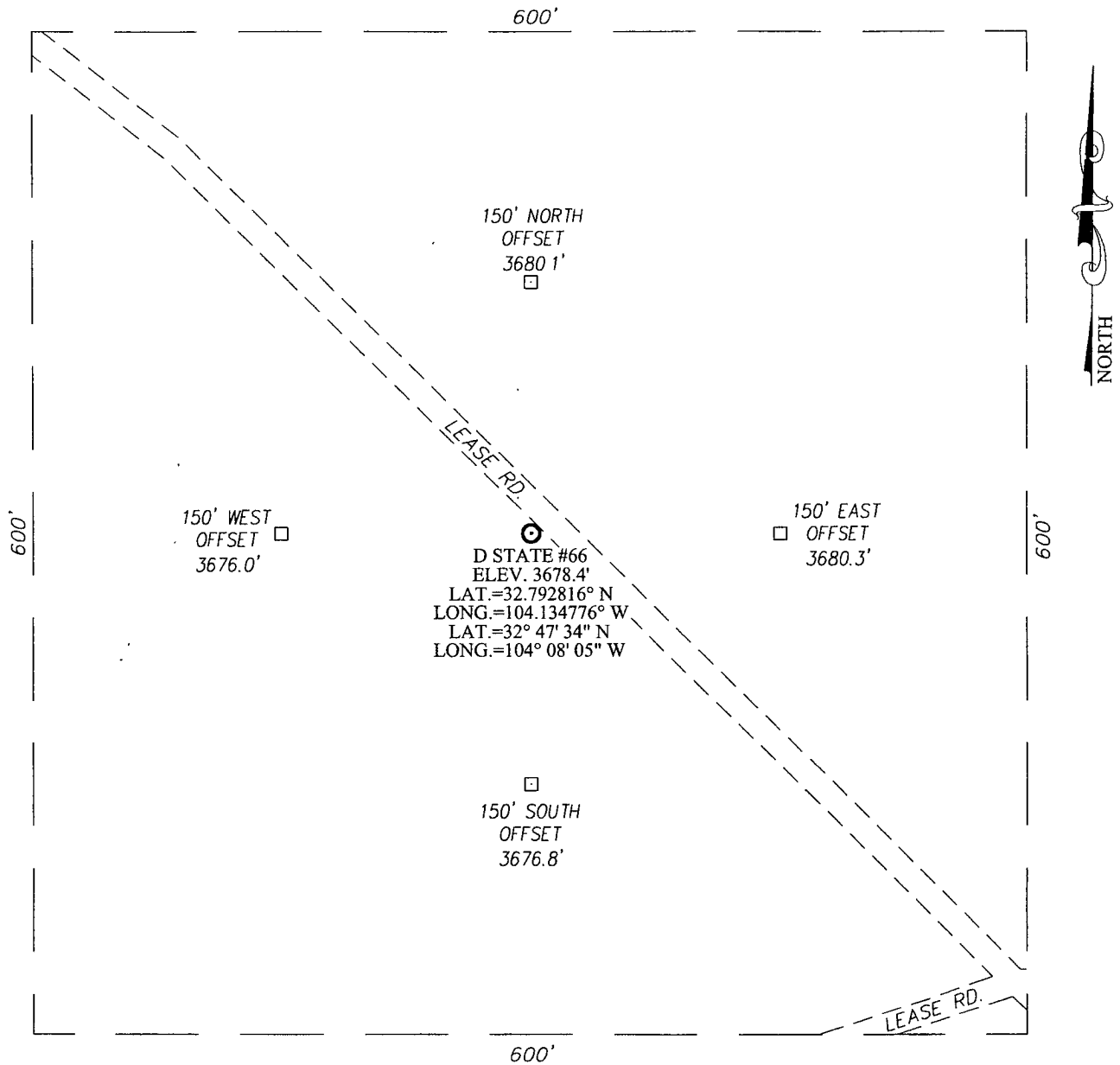
NO ALLOWABLE WILL BE ASSIGNED TO THIS COMPLETION UNTIL ALL INTERESTS HAVE BEEN CONSOLIDATED OR A NON-STANDARD UNIT HAS BEEN APPROVED BY THE DIVISION

	<p>OPERATOR CERTIFICATION</p> <p>I hereby certify that the information herein is true and complete to the best of my knowledge and belief, and that this organization either owns a working interest or unleased mineral interest in the land including the proposed bottom hole location or has a right to drill this well at this location pursuant to a contract with an owner of such mineral or working interest, or to a voluntary pooling agreement or a compulsory pooling order heretofore entered by the division</p> <p><i>Susan Blakemore</i> 12/6/11 Signature Date</p> <p>SUSAN Blakemore Printed Name</p> <p><i>susan.blakemore@apachecorp.com</i> E-mail Address</p>
	<p>SURVEYOR CERTIFICATION</p> <p>I hereby certify that the well location shown on this plat was plotted from field notes of actual surveys made by me or under my supervision, and that the same is true and correct to the best of my belief</p> <p>NOVEMBER 7, 2011</p> <p>Date of Survey</p> <p>Signature & Seal of Professional Surveyor:</p> <p><i>Ronald J. Eidson</i> 12/02/2011 Certificate Number 12641 ESSION Ronald J. Eidson 3239</p> <p>ACR JWSC W O 11.11 2309</p>
	<p>GEODETIC COORDINATES NAD 27 NME</p> <p>SURFACE LOCATION Y=652194.8 N X=561016.3 E</p> <p>LAT.=32.792816° N LONG.=104.134776° W</p> <p>LAT =32° 47' 34" N LONG.=104° 08' 05" W</p>

SECTION 36, TOWNSHIP 17 SOUTH, RANGE 28 EAST, N.M.P.M.

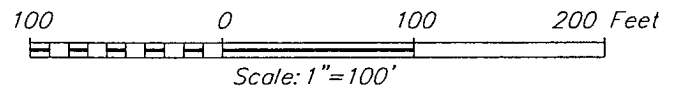
EDDY COUNTY


NEW MEXICO



DIRECTIONS TO LOCATION

FROM THE INTERSECTION OF U.S. HWY. #82 AND CO. RD. #209 (TURKEY TRACK RD.), GO NORTHEAST ON U.S. HWY #82 APPROX. 1.1 MILES. TURN RIGHT AND GO SOUTHEAST APPROX. 0.4 MILES TURN RIGHT AND GO WEST ON MAIN LEASE ROAD APPROX. 0.2 MILES TURN LEFT AND GO SOUTH APPROX. 0.3 MILES. TURN RIGHT AND GO SOUTHWEST APPROX. 0.2 MILES TURN RIGHT AND GO NORTHWEST APPROX. 0.1 MILE. THE LOCATION STAKE IS APPROX. 10 FEET WEST OF ROAD





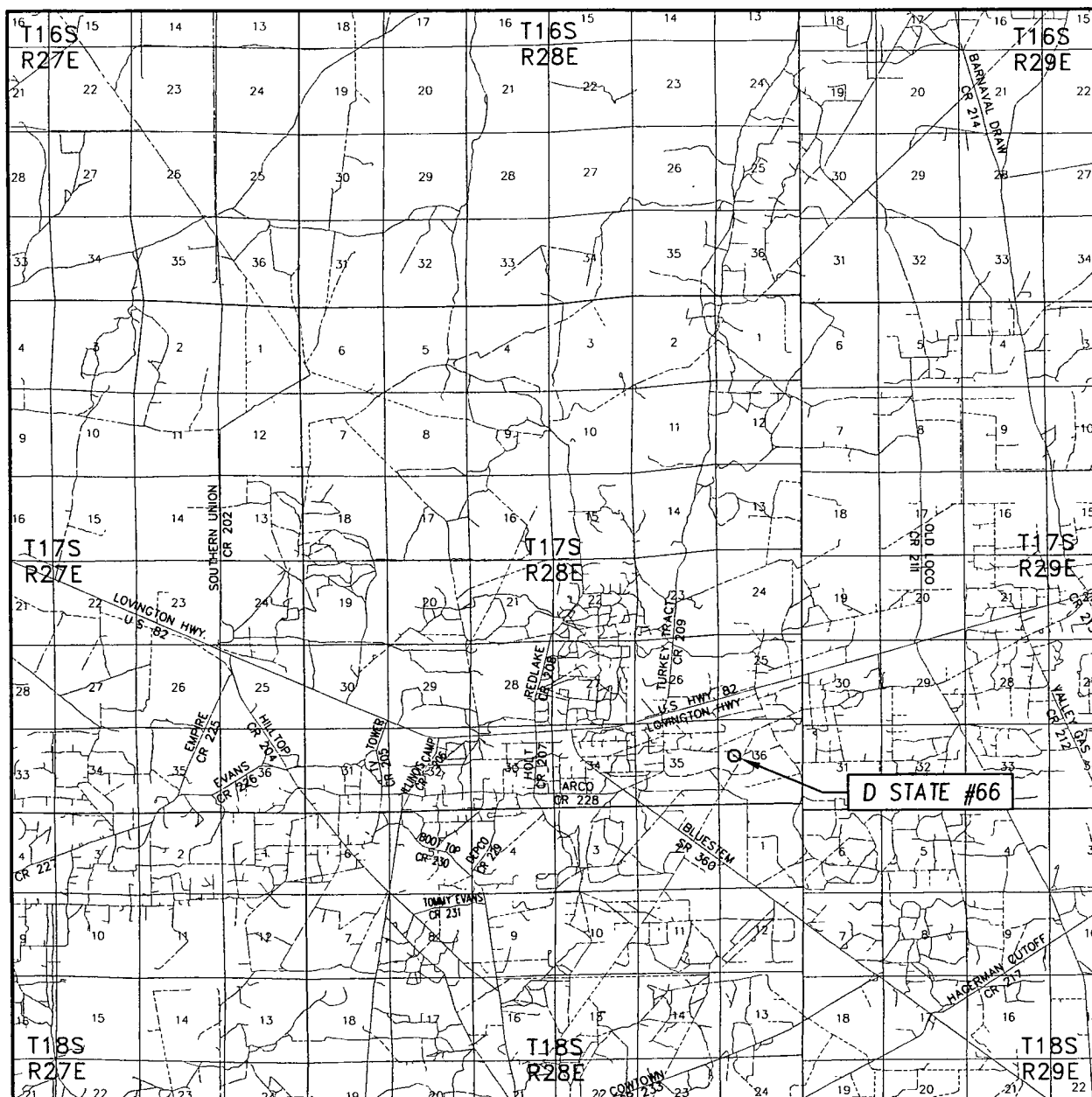
PROVIDING SURVEYING SERVICES
SINCE 1946
JOHN WEST SURVEYING COMPANY
412 N DAL PASO
HOBBS, N.M. 88240
(575) 393-3117

APACHE CORPORATION

D STATE #66 WELL
LOCATED 2310 FEET FROM THE NORTH LINE
AND 990 FEET FROM THE WEST LINE OF SECTION 36,
TOWNSHIP 17 SOUTH, RANGE 28 EAST, N.M.P.M.,
EDDY COUNTY, NEW MEXICO

Survey Date: 11/07/11	Sheet 1 of 1 Sheets
W.O. Number: 11.11.2309	Dr. By: ACR Rev 1:
Date: 11/30/11 Rel. W.O.:	11112309 Scale: 1"=100'

S NORTH



SEC. 36 TWP. 17-S RGE. 28-E

SURVEY N.M.P.M.

COUNTY EDDY STATE NEW MEXICO

DESCRIPTION 2310' FNL & 990' FWL

ELEVATION 3678'

OPERATOR APACHE CORPORATION

LEASE _____ D STATE _____

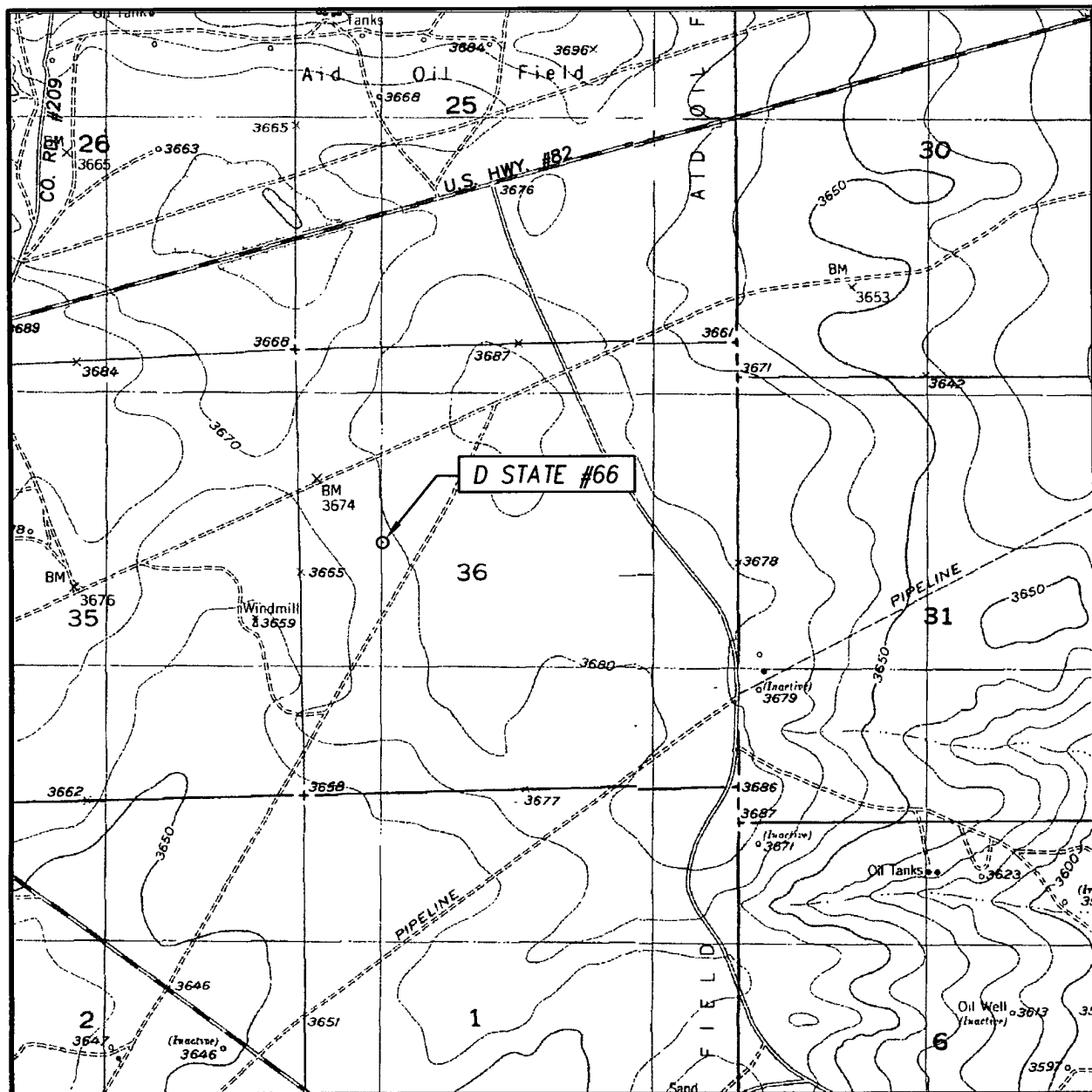


PROVIDING SURVEYING SERVICES
SINCE 1946

JOHN WEST SURVEYING COMPANY

412 N DAL PASO
HOBBS, NM 88240
(575) 393-3117

LOCATION VERIFICATION MAP



SCALE: 1" = 2000'

CONTOUR INTERVAL:
RED LAKE, N.M. - 10'
RED LAKE SE, N.M. - 10'

SEC. 36 TWP. 17-S RGE. 28-E

SURVEY _____ N.M.P.M.

COUNTY EDDY STATE NEW MEXICO


DESCRIPTION 2310' FNL & 990' FWL

ELEVATION 3678'

OPERATOR APACHE CORPORATION

LEASE D STATE

U.S.G.S. TOPOGRAPHIC MAP
RED LAKE, N.M.



PROVIDING SURVEYING SERVICES
SINCE 1946
JOHN WEST SURVEYING COMPANY
412 N. DAL PASO
HOBBS, N.M. 88240
(575) 393-3117