

**OCD-ARTESIA**

Form 3160-3  
(April 2004)

UNITED STATES  
DEPARTMENT OF THE INTERIOR  
BUREAU OF LAND MANAGEMENT

FORM APPROVED  
OMB No 1004-0137  
Expires March 31, 2007

**APPLICATION FOR PERMIT TO DRILL OR REENTER**

5a. Type of work <input checked="" type="checkbox"/> DRILL <input type="checkbox"/> REENTER		5. Lease Serial No. <b>NM LC 029395B</b>
1b. Type of Well <input checked="" type="checkbox"/> Oil Well <input type="checkbox"/> Gas Well <input type="checkbox"/> Other <input checked="" type="checkbox"/> Single Zone <input type="checkbox"/> Multiple Zone		6. If Indian, Allottee or Tribe Name
2. Name of Operator <b>Apache Corporation</b>		7. If Unit or CA Agreement, Name and No.
3a. Address <b>303 Veterans Airpark Ln, Ste 3000 Midland, Texas 79705</b>		8. Lease Name and Well No. <b>LEE FEDERAL #047 (308720)</b>
3b. Phone No. (include area code) <b>432-818-1023</b>		9. API Well No. <b>30-015 40033</b>
4. Location of Well (Report location clearly and in accordance with any State requirements*) At surface <b>885' FSL &amp; 1740' FEL</b> At proposed prod zone <b>SAME</b>		10. Field and Pool, or Explorat. <b>Mar Loco; Gabriela-Yeso</b>
14. Distance in miles and direction from nearest town or post office* <b>APPROX. 4 MILES EAST OF LOCO HILLS, NM</b>		11. Sec., T, R, M. or Bk and Survey or Area <b>SEC 20, T17S, R31E UL O</b>
15. Distance from proposed* location to nearest property or lease line, ft (Also to nearest drng unit line, if any) <b>885</b>	16. No. of acres in lease <b>1786.15</b>	17. Spacing Unit dedicated to this well <b>40</b>
18. Distance from proposed location* to nearest well, drilling, completed, applied for, on this lease, ft <b>~ 288</b>	19. Proposed Depth <b>6500</b>	20. BLM/BIA Bond No on file <b>BLM-CO-1463 NATIONWIDE NM 6000736</b>
21. Elevations (Show whether DF, KDB, RT, GL, etc) <b>3720'</b>	22. Approximate date work will start*	23. Estimated duration <b>-10 DAYS</b>

**24. Attachments**

The following, completed in accordance with the requirements of Onshore Oil and Gas Order No 1, shall be attached to this form

- |   |   |
|---|---|
| 1 Well plat certified by a registered surveyor  | 4 Bond to cover the operations unless covered by an existing bond on file (see Item 20 above)     |
| 2 A Drilling Plan   | 5. Operator certification   |
| 3 A Surface Use Plan (if the location is on National Forest System Lands, the SUPO shall be filed with the appropriate Forest Service Office) | 6. Such other site specific information and/or plans as may be required by the authorized officer |

25. Signature <i>Sherene Starr</i>	Name (Printed/Typed) <b>SHERENE STARR</b>	Date <b>11-18-11</b>
------------------------------------	--	-------------------------

Title **DRILLING TECH**

Approved by (Signature) <i>/s/ Don Peterson</i>	Name (Printed/Typed) <b>MAR 2 2012</b>
---	---

Title **FIELD MANAGER** Office **CARLSBAD FIELD OFFICE**

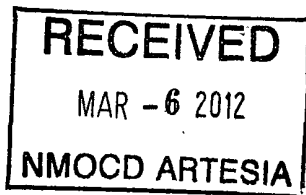
Application approval does not warrant or certify that the applicant holds legal or equitable title to those rights in the subject lease which would entitle the applicant to conduct operations thereon.  
Conditions of approval, if any, are attached.

**APPROVAL FOR TWO YEARS**

Title 18 U.S.C. Section 1001 and Title 43 U.S.C. Section 1212, make it a crime for any person knowingly and willfully to make to any department or agency of the United States any false, fictitious or fraudulent statements or representations as to any matter within its jurisdiction.

\*(Instructions on page 2)

**Roswell Controlled Water Basin**



**Approval Subject to General Requirements & Special Stipulations Attached**

**SEE ATTACHED FOR CONDITIONS OF APPROVAL**

UNITED STATES DEPARTMENT OF THE INTERIOR  
BUREAU OF LAND MANAGEMENT  
CARLSBAD FIELD OFFICE  
620 E. GREENE STREET  
CARLSBAD, NM 88220

OPERATOR CERTIFICATION

I HEARBY CERTIFY THAT I, OR SOMEONE UNDER MY DIRECT SUPERVISION, HAVE INSPECTED THE DRILL SITE AND ACCESS ROUTE PROPOSED HEREIN; THAT I AM FAMILIAR WITH THE CONDITIONS WHICH CURRENTLY EXIST; THAT I HAVE FULL KNOWLEDGE OF STATE AND FEDERAL laws applicable to this operation; that the statements made in the APD package are, to the best of my knowledge, true and correct; and that the work associated with the operations proposed herein will be performed in conformity with this APD package and the terms and conditions under which it is approved. I also certify that I, or the company I represent, am responsible for the operations conducted under this application. These statements are subject to the provisions of 18 U.S.C. 1001 for the filing of false statements.

Executed this 15 day of NOVEMBER, 2011

Well: LEE FEDERAL #47

Operator Name: APACHE CORPORATION

Signature: *Bob Lange* Printed Name: BOB LANGE

Title: Drilling Engineer Date: 11/15/2011

Email (optional): bob.lange@apachecorp.com

Street or Box: 303 Veterans Airpark Ln., Ste. 3000

City, State, Zip Code: Midland, TX 79705

Telephone: 432-818-1114

Field Representative (if not above signatory): \_\_\_\_\_

Address (if different from above): \_\_\_\_\_

Telephone (if different from above): \_\_\_\_\_

Email (optional): \_\_\_\_\_

Agents not directly employed by the operator must submit a letter from the operator authorizing that the agent to act or file this application on their behalf.

PA

DISTRICT I  
1625 N. FRENCH DR., HOBBS, NM 88240

DISTRICT II  
1301 W. GRAND AVENUE, ARTESIA, NM 88210

DISTRICT III  
1000 RIO BRAZOS RD., AZTEC, NM 87410

DISTRICT IV  
11885 S. ST. FRANCIS DR., SANTA FE, NM 87505

**State of New Mexico**  
Energy, Minerals & Natural Resources Department  
**OIL CONSERVATION DIVISION**  
1220 South St. Francis Dr.  
Santa Fe, New Mexico 87505

Form C-102  
Revised July 16, 2010  
Submit to Appropriate  
District Office

AMENDED REPORT

**WELL LOCATION AND ACREAGE DEDICATION PLAT**

API Number <b>30-015-40033</b>	Pool Code <b>97866</b>	Pool Name <b>Mar Loco; Glorieta 1/850</b>
Property Code <b>308720</b>	Property Name <b>LEE FEDERAL</b>	Well Number <b>47</b>
OGRID No. <b>873</b>	Operator Name <b>APACHE CORPORATION</b>	Elevation <b>3720'</b>

Surface Location

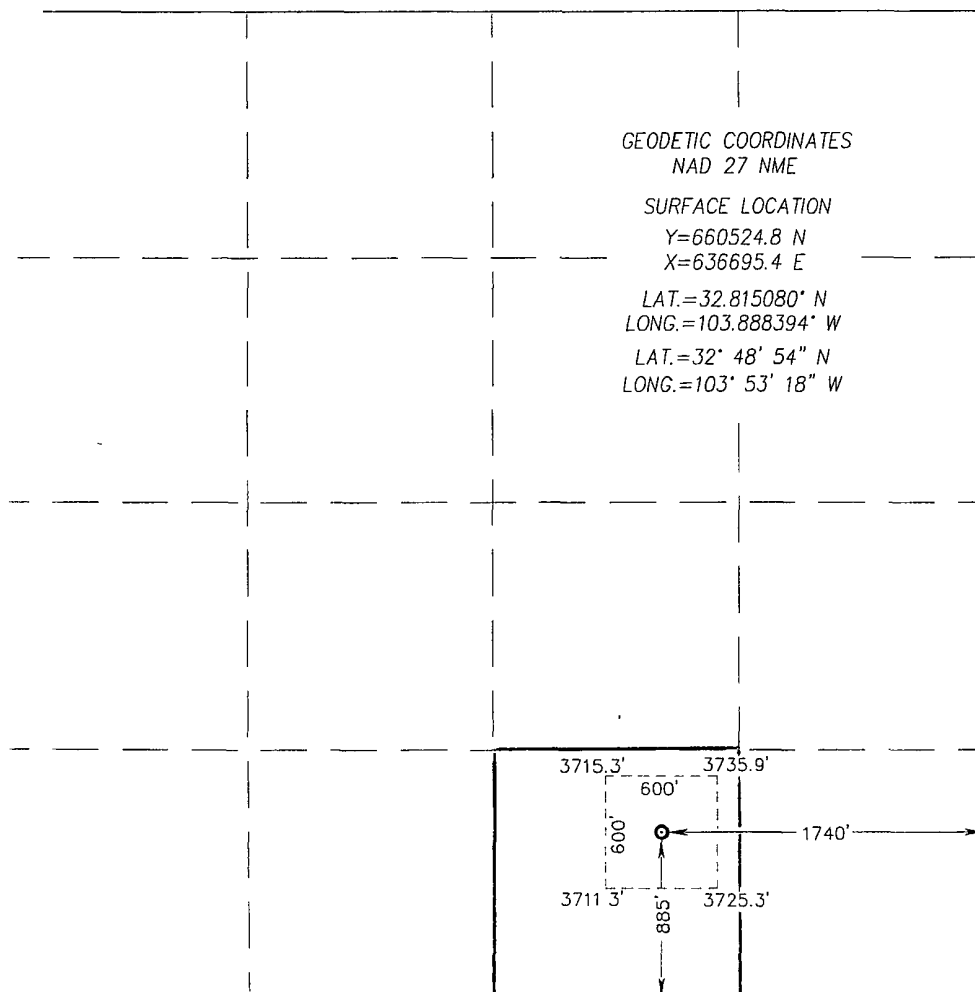
UL or lot No.	Section	Township	Range	Lot Idn	Feet from the	North/South line	Feet from the	East/West line	County
0	20	17-S	31-E		885	SOUTH	1740	EAST	EDDY

Bottom Hole Location If Different From Surface

UL or lot No.	Section	Township	Range	Lot Idn	Feet from the	North/South line	Feet from the	East/West line	County

Dedicated Acres <b>40</b>	Joint or Infill	Consolidation Code	Order No.
------------------------------	-----------------	--------------------	-----------

NO ALLOWABLE WILL BE ASSIGNED TO THIS COMPLETION UNTIL ALL INTERESTS HAVE BEEN CONSOLIDATED OR A NON-STANDARD UNIT HAS BEEN APPROVED BY THE DIVISION



GEODETTIC COORDINATES  
NAD 27 NME

SURFACE LOCATION  
Y=660524.8 N  
X=636695.4 E

LAT.=32.815080° N  
LONG.=103.888394° W

LAT.=32° 48' 54" N  
LONG.=103° 53' 18" W

**OPERATOR CERTIFICATION**

I hereby certify that the information herein is true and complete to the best of my knowledge and belief, and that this organization either owns a working interest or unleased mineral interest in the land including the proposed bottom hole location or has a right to drill this well at this location pursuant to a contract with an owner of such mineral or working interest, or to a voluntary pooling agreement or a compulsory pooling order heretofore entered by the division.

*Sherene Starr* 11-8-11  
Signature Date

Sherene Starr  
Printed Name

sherene.starr@apachecorp.com  
E-mail Address

**SURVEYOR CERTIFICATION**

I hereby certify that the well location shown on this plat was plotted from field notes of actual surveys made by me or under my supervision, and that the same is true and correct to the best of my belief.

MARCH 28, 2011

Date of Survey  
Signature & Seal of Professional Surveyor:

Certificate Number... 3239  
Ronald J. Eidson  
DSS JWSC W.O.: 11.11.0571

**DRILLING PLAN: BLM COMPLIANCE**  
(Supplement to BLM 3160-3)

**APACHE CORPORATION (OGRID: 873) LEE FEDERAL #47**

Lease #: NMLC-029395B Projected TD: 6500' GL: 3720'  
885' FSL & 1740' FEL, UL: O SEC: 20 T17S R31E EDDY COUNTY, NM

- GEOLOGIC NAME OF SURFACE FORMATION:** Eolian/Piedmont Alluvial Deposits
- ESTIMATED TOPS OF GEOLOGICAL MARKERS & DEPTHS OF ANTICIPATED FRESH WATER, OIL OR GAS:**

FORMATION	WELL DEPTH	WATER/OIL/GAS
Eolian/Piedmont Alluvials	Surface	
Rustler	386'	
Salt Top	517'	
Salt Bottom	1378'	
Yates	1564'	
Grayburg	2963'	Oil
San Andres	3289'	Oil
Glorieta	4867'	
Yeso	4966'	
TD	6500'	
Depth to Ground Water:	~91'	

*See COA*

All fresh water & prospectively valuable minerals, as described by BLM, encountered during drilling, will be recorded by depth and adequately protected. All oil & gas shows within zones of correlative rights will be tested to determine commercial potential. The surface fresh water sands will be protected by setting 13-3/8" csg @ 410' & circ cmt back to surface. All intervals will be isolated by setting 5-1/2" csg to TD & circ cmt above the base of 8-5/8" csg.

- CASING PROGRAM:** All casing is new & API approved

*see COA*

HOLE SIZE	DEPTH	OD CSG	WEIGHT	COLLAR	GRADE	COLLAPSE	BURST	TENSION
17-1/2"	0' - 410'	13-3/8"	48#	STC	H-40	1.125	1.0	1.8
11"	410' - 3500'	8-5/8"	32#	STC	J-55	1.125	1.0	1.8
7-7/8"	3500' - 6500'	5-1/2"	17#	LTC	J-55	1.125	1.0	1.8

- CEMENT PROGRAM:**

- 13-3/8" Surface:** Run & set 13-3/8" 48# H-40 STC csg to 410'. Cmt with:  
Lead: 450 sx Class C w/ 1% CaCl<sub>2</sub>, 0.25% R38 (14.8 wt, 1.34 yld) *See COA*  
 Compressive Strengths: **12 hr** - 813 psi **24 hr** - 1205 psi \*\*\*100% excess cmt; cmt to surface\*\*\*
- 8-5/8" Intermediate:** Run & set 8-5/8" 24# J-55 STC csg to 3500'. Cmt with:  
Lead: 720 sx (35:65) Poz C w/ 6% Bentonite, 5% Salt, 0.25% R38 (12.4wt, 2.1 yld)  
 Compressive Strengths: **12 hr** - 589 psi **24 hr** - 947 psi  
Tail: 225 sx Class C w/, 0.25% R38 (14.8 wt, 1.34 yld)  
 Compressive Strengths: **12 hr** - 813 psi **24 hr** - 1205 psi \*\*\*100% excess cmt; cmt to surface\*\*\*
- 5-1/2" Production:** Run & set 5-1/2" 17# J-55 LTC csg to 6500' (TOC: ~500') Cmt with: *See COA*  
Lead: 300 sx (65:35) Poz C w/ 5% Salt, 0.25% R38, 6% Bentonite (12.4 wt, 2.1 yld)  
 Compressive Strengths: **12 hr** - 540 psi **24 hr** - 866 psi  
Tail: 700 sx (50:50) Poz C w/ 5% Salt, 0.25% R38, 2% Bentonite (14.2 wt, 1.28 yld)  
 Compressive Strengths: **12 hr** - 1379 psi **24 hr** - 2332 psi \*\*\*35% excess cmt\*\*\*

\*\* The above cmt volumes could be revised pending caliper measurement from open hole logs. For Surface csg: If cmt does not circ to surface, the appropriate BLM office shall be notified & a tag with 1" will be performed at four positions 90 degrees apart to verify cmt depth. If depth is greater than 100' or water is standing in the annulus, remedial cementing will be done. If no water & TOC tag is less than 100', when 100% excess cmt of the annulus volume is run on the primary job, ready-mix will be used to bring cmt to surface.

*TAMM  
11/30/2012*



## 5. PROPOSED CONTROL EQUIPMENT

See COA

"EXHIBIT 3" shows an 11" 3M psi WP BOP consisting of an annular bag type preventer, middle blind rams, bottom pipe rams. The BOP will be nipped up on the 13-3/8" surface csg and tested to 70% of casing burst. After the intermediate casing is set & cemented the 13-3/8" casing head will be removed and a 11" 3M head will be installed on the 8 5/8" casing and utilized continuously until total depth is reached. The BOP will be tested at 2000 psi, maximum surface pressure is not expected to exceed 2M psi, BHP is calculated to be approximately 2860 psi. \*All BOP's and associated equipment will be tested as per BLM *Drilling Operations Order #2*. The BOP will be operated and checked each 24 hr period & the blind rams will be operated & checked when the drill pipe is out of the hole. Functional tests will be documented on the daily driller's log. "EXHIBIT 3" also shows a 3M psi choke manifold with a 3" blow down line. Full opening stabbing valve & Kelly cock will be on derrick floor in case of need. No abnormal pressures or temperatures are expected in this well. No nearby wells have encountered any problems.

## 6. PROPOSED MUD CIRCULATION SYSTEM: (Closed Loop System)

INTERVAL	MW (ppg)	VISC (sec/qt)	FLUID LOSS (cc)	MUD TYPE
0' -410'	8.4	29	NC	Fresh Water
410' to 3500'	9.8 - 10.0	29	NC	Brine
3500' - 6500'	8.9 - 9.0	29	NC	Cut Brine

\*\* The necessary mud products for weight addition and fluid loss control will be on location at all times. In order to run open hole logs & casing, the above mud properties may have to be altered to meet these needs.

## 7. AUXILIARY WELL CONTROL EQUIPMENT / MONITORING EQUIPMENT:

- 11" x 3000 psi Double BOP/Blind & pipe ram (2M BOP if available) See COA
- 4-1/2" x 3000 psi Kelly valve
- 11" x 3000 psi mud cross - H2S detector on production hole
- Gate-type safety valve 3" choke line from BOP to manifold
- 2" adjustable chokes - 3" blow down line

## 8. LOGGING, CORING & TESTING PROGRAM:

- OH logs: Dual Laterolog, MSFL, CNL, Litho-Density, Gamma Ray, Caliper & Sonic from TD back to 8-5/8" csg shoe.
- Run CNL, Gamma Ray from 8-5/8" csg shoe back to surface.
- No cores, DST's or mud logger are planned at this time.
- Additional testing will be initiated subsequent to setting the 5-1/2" production casing. Specific intervals will be targeted based on log evaluation, geological sample shows & drill stem tests.

## 9. POTENTIAL HAZARDS: See COA

No abnormal pressures or temperatures are anticipated. In the event abnormal pressures are encountered, however, the proposed mud program will be modified to increase the mud-weight. There is known presence of H<sub>2</sub>S in this area. If H<sub>2</sub>S is encountered the operator will comply with the provisions of *Onshore Oil & Gas Order No. 6*. No lost circulation is expected to occur. All personnel will be familiar with all aspects of safe operation of equipment being used to drill this well. Estimated BHP: 2860 psi and estimated BHT: 115°.

## 10. ANTICIPATED STARTING DATE AND DURATION OF OPERATIONS:

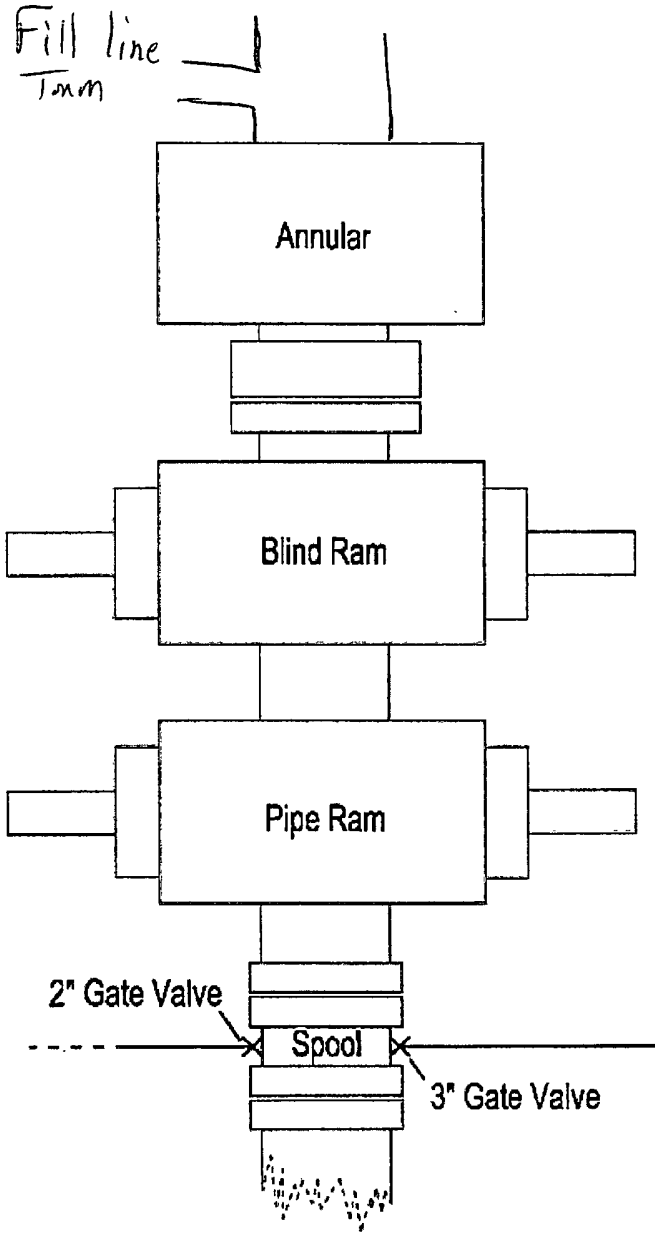
Road and location construction will begin after Santa Fe & BLM has approved APD. Anticipated spud date will be as soon after Santa Fe and BLM approval and as soon as rig will be available. Move in operations and drilling is expected to take 10 days. If production casing is run then an additional 90 days will be needed to complete well and construct surface facilities and/or lay flow lines in order to place well on production.

## 11. OTHER FACETS OF OPERATION:

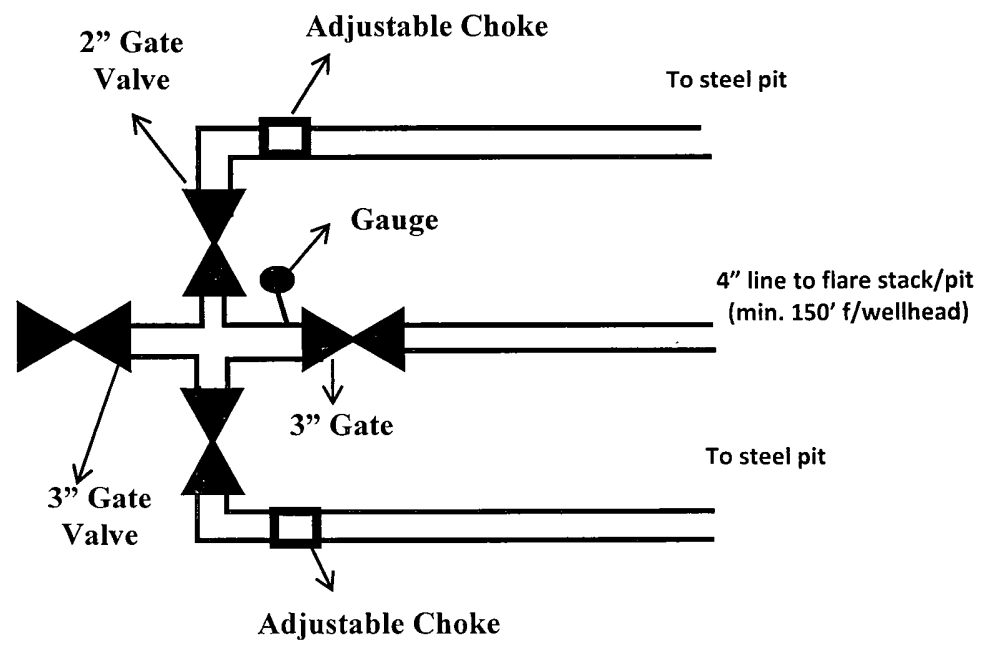
After running csg, cased hole Gamma Ray, Neutron Collar logs will be run from TD back to all possible productive zones. The Cedar Lake; Glorieta-Yeso formation will be perforated and stimulated in order to establish production. The well will be swab tested & potentialized as an oil well.

JMM  
1/30/2012





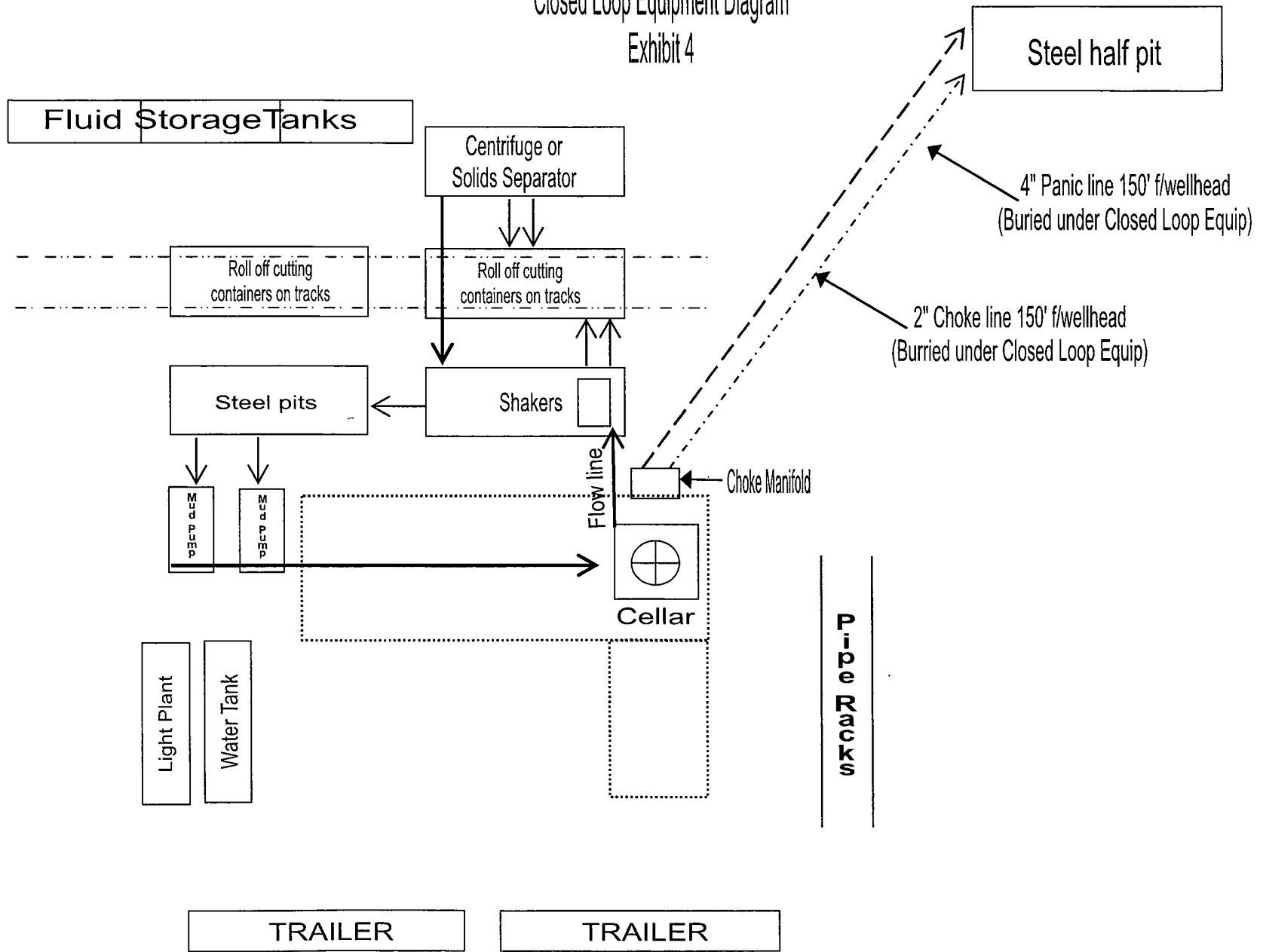
**3M psi BOPE & Choke Manifold**  
**Exhibit 3**  
 All valve & lines on choke manifold are 2" unless noted.  
 Exact manifold configuration may vary



# Apache

## Closed Loop Equipment Diagram

### Exhibit 4





**DESIGN PLAN, OPERATING & MAINTENANCE PLAN, & CLOSURE PLAN  
FOR OCD FOR C-144**

**LEE FEDERAL #47**

**DESIGN PLAN**

Fluid & cuttings coming from drilling operations will pass over the Shale Shaker with the cuttings going to the Sundance Inc / CRI haul off bin and the cleaned fluid returning to the working steel pits.

Equipment includes:

- 2 – 500 bbl steel frac tanks (fresh water for drilling)
- 2 – 180 bbl steel working pits
- 3 – 75 bbl steel haul off bins
- 2 – Pumps (6-1/2" x 10" PZ 10 or equivalent)
- 1 – Shale shaker
- 1 – Mud cleaner – QMAX MudStripper

**OPERATING AND MAINTENANCE PLAN**

*Inspection to occur every tour for proper operation of system and individual components. If any problems are found they will be repaired and/or corrected immediately.*

**CLOSURE PLAN**

All haul bins containing cuttings will be removed from location and hauled to Sundance Incorporated (NM-01-0003) disposal site located 3 miles East of Eunice, NM on the Texas border / Controlled Recovery, Inc's (NM-01-0006) disposal site located near mile marker 66 on Highway 62/180.

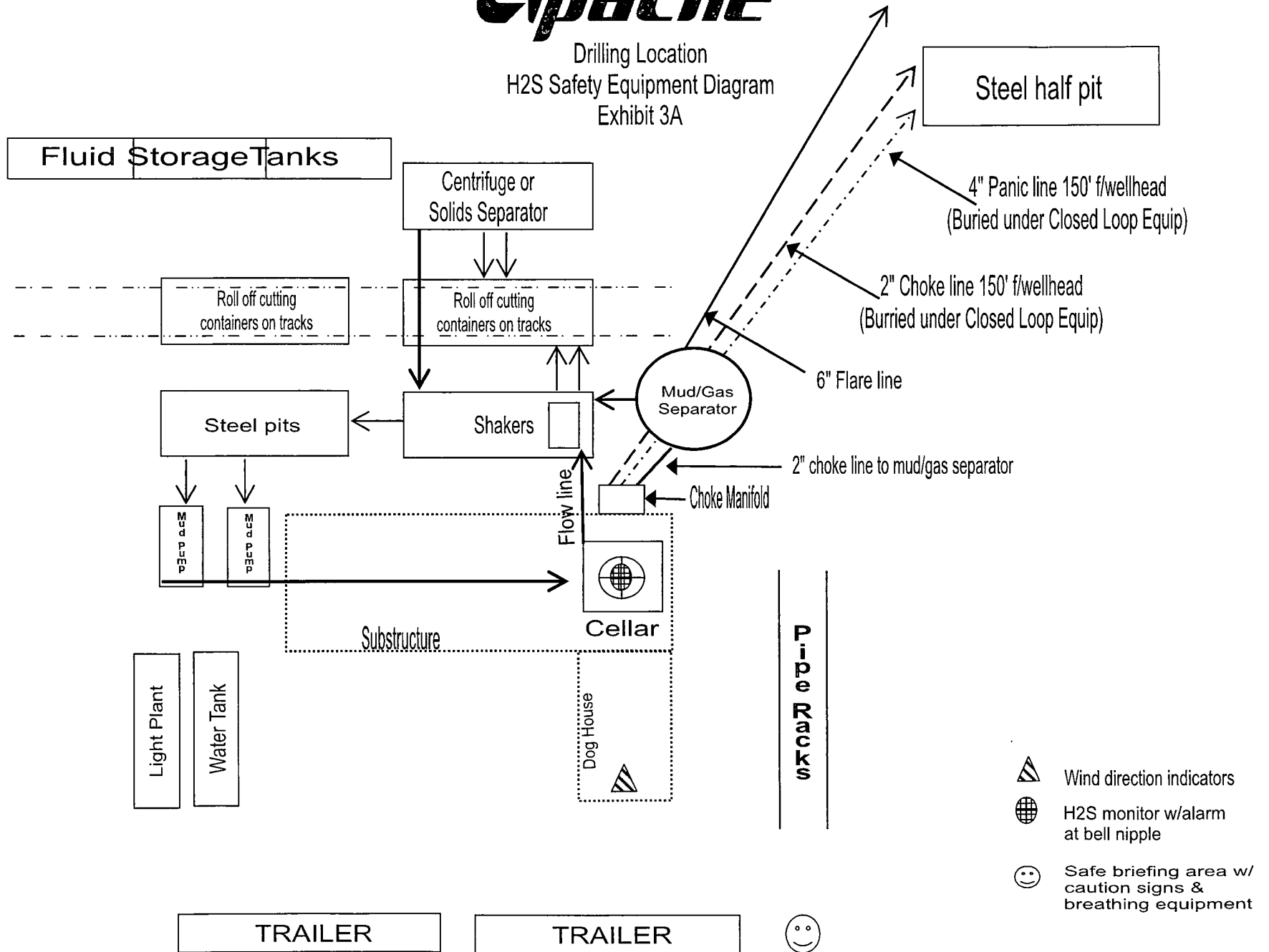
Sherene Starr  
Drilling Tech





# Apache

Drilling Location  
H2S Safety Equipment Diagram  
Exhibit 3A



# **HYDROGEN SULFIDE (H<sub>2</sub>S) DRILLING OPERATIONS PLAN**

## **Hydrogen Sulfide Training:**

All regularly assigned personnel, contracted or employed by Apache Corporation will receive training from qualified instructor(s) in the following areas prior to commencing drilling possible hydrogen sulfide bearing formations in this well:

- The hazards and characteristics of hydrogen sulfide (H<sub>2</sub>S)
- The proper use and maintenance of personal protective equipment and life support systems.
- The proper use of H<sub>2</sub>S detectors, alarms, warning systems, briefing area, evacuation procedures & prevailing winds.
- The proper techniques for first aid and rescue procedures.

## **Supervisory personnel will be trained in the following areas:**

- The effects of H<sub>2</sub>S on metal components. If high tensile tubulars are to be utilized, personnel will be trained in their special maintenance requirements.
- Corrective action & shut-in procedures when drilling or reworking a well & blowout prevention / well control procedures.
- The contents and requirements of the H<sub>2</sub>S Drilling Operations Plan

There will be an initial training session just prior to encountering a known or probable H<sub>2</sub>S zone (within 3 days or 500') and weekly H<sub>2</sub>S and well control drills for all personnel in each crew. The initial training session shall include a review of the site specific H<sub>2</sub>S Drilling Operations Plan and the Public Protection Plan. This plan shall be available at the well site. All personnel will be required to carry documentation that they have received proper training.

## **H<sub>2</sub>S SAFETY EQUIPMENT AND SYSTEMS:**

### **Well Control Equipment that will be available & installed if H<sub>2</sub>S is encountered:**

- Flare Line with electronic igniter or continuous pilot.
- Choke manifold with a minimum of one remote choke.
- Blind rams & pipe rams to accommodate all pipe sizes with properly sized closing unit.
- Auxiliary equipment to include: annular preventer, mud-gas separator, rotating head & flare gun with flares

### **Protective Equipment for Essential Personnel:**

- Mark II Survive-air 30 minute units located in dog house & at briefing areas, as indicated on wellsite diagram.

### **H<sub>2</sub>S Detection and Monitoring Equipment:**

- Two portable H<sub>2</sub>S monitors positioned on location for best coverage & response. These units have warning lights & audible sirens when H<sub>2</sub>S levels of 20 ppm are reached.
- One portable H<sub>2</sub>S monitor positioned near flare line.

### **H<sub>2</sub>S Visual Warning Systems:**

- Wind direction indicators are shown on wellsite diagram.
- Caution / Danger signs shall be posted on roads providing direct access to location. Signs will be painted a high visibility yellow with black lettering of sufficient size to be readable at a reasonable distance from the immediate location. Bilingual signs will be used when appropriate.

### **Mud Program:**

- The Mud Program has been designed to minimize the volume of H<sub>2</sub>S circulated to the surface. Proper mud weights, safe drilling practices & the use of H<sub>2</sub>S scavengers will minimize hazards when penetrating H<sub>2</sub>S bearing zones.
- A mud-gas separator and H<sub>2</sub>S gas buster will be utilized as needed.

### **Metallurgy:**

- All drill strings, casing, tubing, wellhead, blowout preventers, drilling spool, kill lines, choke manifold & lines, & valves will be suitable for H<sub>2</sub>S service.
- All elastomers used for packing & seals shall be H<sub>2</sub>S trim.

### **Communication:**

- Cellular telephone and 2-way radio communications in company vehicles, rig floor and mud logging trailer.

# HYDROGEN SULFIDE (H<sub>2</sub>S) CONTINGENCY PLAN

**Assumed 100 ppm ROE = 3000'**

100 ppm H<sub>2</sub>S concentration shall trigger activation of this plan.

## Emergency Procedures

In the event of a release of gas containing H<sub>2</sub>S, the first responder(s) must

- Isolate the area and prevent entry by other persons into the 100 ppm ROE.
- Evacuate any public places encompassed by the 100 ppm ROE.
- Be equipped with H<sub>2</sub>S monitors and air packs in order to control the release.
- Use the "buddy system" to ensure no injuries occur during the response
- Take precautions to avoid personal injury during this operation.
- Contact operators and/or local officials to aid in operation. See list of phone numbers attached.
- Have received training in the :
  - Detection of H<sub>2</sub>S, and
  - Measures for protection against the gas,
  - Equipment used for protection and emergency response.

## Ignition of Gas source

Should control of the well be considered lost and ignition considered, take care to protect against exposure to Sulfur Dioxide (SO<sub>2</sub>). Intentional ignition must be coordinated with the NMOCD and local officials. Additionally the NM State Police may become involved. NM State Police shall be the Incident Command on scene of any major release. Take care to protect downwind whenever this is an ignition of the gas.

### Characteristics of H<sub>2</sub>S and SO<sub>2</sub>

Common Name	Chemical Formula	Specific Gravity	Threshold Limit	Hazardous Limit	Lethal Concentration
Hydrogen Sulfide	H <sub>2</sub> S	1.189 Air = 1	10 ppm	100 ppm/hr	600 ppm
Sulfur Dioxide	SO <sub>2</sub>	2.21 Air = 1	2 ppm	N/A	1000 ppm

## **Contacting Authorities**

Apache Corporation personnel must liaison with local and state agencies to ensure a proper response to a major release. Additionally, the OCD must be notified of the release as soon as possible but no later than 4 hours. Agencies will ask for information such as type and volume of release, wind direction, location of release, etc. Be prepared with all information available including directions to site. The following call list of essential and potential responders has been prepared for use during a release. Apache's response must be in coordination with the State of New Mexico's "Hazardous Materials Emergency Response Plan" (HMER).

# WELL CONTROL EMERGENCY RESPONSE PLAN

## I. GENERAL PHILOSOPHY

Our objective is to ensure that during an emergency, a predetermined procedure is followed so that prompt decisions can be made based on accurate information.

The best way to handle an emergency is with an experienced organization set up for the sole purpose of solving the problem. The *Well Control Emergency Response Team* was organized to handle dangerous & expensive well control problems. The *Team* is structured such that each individual can contribute the most from his area of expertise. Key decision-makers are determined prior to an emergency to avoid confusion about who is in charge.

If the well is flowing uncontrolled at the surface or subsurface, *The Emergency Response Team* will be mobilized. The *Team* is customized for the people currently on the Apache staff. Staff changes may require a change in the plan.

## II. EMERGENCY PROCEDURE ON DRILLING OR COMPLETION OPERATIONS

- A. In the event of an emergency the *Drilling Foreman* or *Tool-Pusher* will immediately contact only one of the following starting with the first name listed:

Name	Office	Mobile	Home
Danny Laman – Drlg Superintendent	432-818-1022	432-634-0288	432-520-3528
Bob Lange – Drilling Engineer	432-818-1114	432-661-6404	
Bobby Smith – Drilling Manager	432-818-1020	432-556-7701	
Jeff Burt – Supervisor EH&S		432-631-9081	432-355-4044

*\*\*This one phone call will free the Drilling Foreman to devote his full time to securing the safety of personnel & equipment. This call will initiate the process to mobilize the Well Control Emergency Response Team. Apache maintains an Emergency Telephone Conference Room in the Houston office. This room is available for us by the Permian Region. The room has 50 separate telephone lines.*

- B. The Apache employee contacted by the Drilling Foreman will begin contacting the rest of the *Team*. If **Danny Laman** is out of contact, **Bob Lange** will be notified.
- C. If a member of the *Emergency Response Team* is away from the job, he must be available for call back. Telephone numbers should be left with secretaries or a key decision-maker.
- D. Apache's reporting procedure for spills or releases of oil or hazardous materials will be implemented when spills or releases have occurred or are probable.

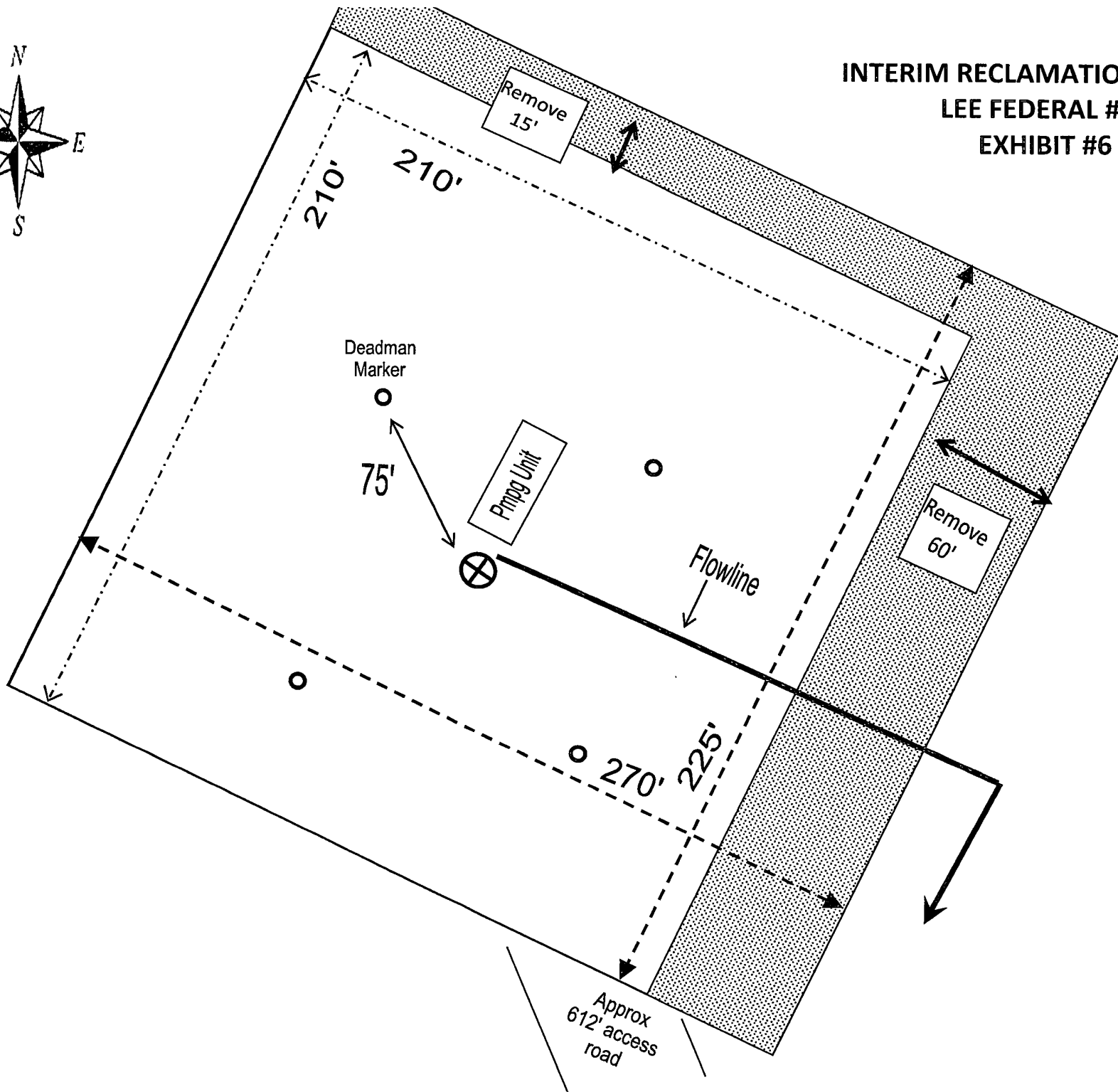
### EMERGENCY RESPONSE NUMBERS:

<b>SHERIFF DEPARTMENT</b>	
Eddy County	575-887-7551
Lea County	575-396-3611
<b>FIRE DEPARTMENT</b>	
	911
Artesia	575-746-5050
Carlsbad	575-885-2111
Eunice	575-394-2111
Hobbs	575-397-9308
Jal	575-395-2221
Lovington	575-396-2359
<b>HOSPITALS</b>	
	911
Artesia Medical Emergency	575-746-5050
Carlsbad Medical Emergency	575-885-2111
Eunice Medical Emergency	575-394-2112
Hobbs Medical Emergency	575-397-9308
Jal Medical Emergency	575-395-2221
Lovington Medical Emergency	575-396-2359
<b>AGENT NOTIFICATIONS</b>	
Bureau of Land Management OFFICE	575-393-3612 - Switchboard
New Mexico Oil Conservation Division	575-393-6161

BLM 24 hr. call out 575-361-2822 - Eddy County



**INTERIM RECLAMATION LAYOUT  
LEE FEDERAL #47  
EXHIBIT #6**



## PECOS DISTRICT CONDITIONS OF APPROVAL

OPERATOR'S NAME:	APACHE CORPORATION
LEASE NO.:	NMLC29395B
WELL NAME & NO.:	47 LEE FEDERAL
SURFACE HOLE FOOTAGE:	885' FSL & 1740' FWL
BOTTOM HOLE FOOTAGE:	
LOCATION:	Section 20, T.17 S., R.31 E., NMPM
COUNTY:	Eddy County, New Mexico

### TABLE OF CONTENTS

Standard Conditions of Approval (COA) apply to this APD. If any deviations to these standards exist or special COAs are required, the section with the deviation or requirement will be checked below.

- General Provisions**
- Permit Expiration**
- Archaeology, Paleontology, and Historical Sites**
- Noxious Weeds**
- Special Requirements**
  - Fence Requirement
  - Lesser Prairie-Chicken Timing Stipulations
  - Ground-level Abandoned Well Marker
- Construction**
  - Notification
  - Topsoil
  - Closed Loop System
  - Federal Mineral Material Pits
  - Well Pads
  - Roads
- Road Section Diagram**
- Drilling**
  - H<sub>2</sub>S Requirements-Onshore Order #6
  - Casing – Revised Sundry Guidelines for Casing and Cementing
  - Logging Requirements
  - Waste Material and Fluids
- Production (Post Drilling)**
  - Well Structures & Facilities
  - Pipelines
- Interim Reclamation**
- Final Abandonment & Reclamation**

## **I. GENERAL PROVISIONS**

The approval of the Application For Permit To Drill (APD) is in compliance with all applicable laws and regulations: 43 Code of Federal Regulations 3160, the lease terms, Onshore Oil and Gas Orders, Notices To Lessees, New Mexico Oil Conservation Division (NMOCD) Rules, National Historical Preservation Act As Amended, and instructions and orders of the Authorized Officer. Any request for a variance shall be submitted to the Authorized Officer on Form 3160-5, Sundry Notices and Report on Wells.

## **II. PERMIT EXPIRATION**

If the permit terminates prior to drilling and drilling cannot be commenced within 60 days after expiration, an operator is required to submit Form 3160-5, Sundry Notices and Reports on Wells, requesting surface reclamation requirements for any surface disturbance. However, if the operator will be able to initiate drilling within 60 days after the expiration of the permit, the operator must have set the conductor pipe in order to allow for an extension of 60 days beyond the expiration date of the APD. (Filing of a Sundry Notice is required for this 60 day extension.)

## **III. ARCHAEOLOGICAL, PALEONTOLOGY & HISTORICAL SITES**

Any cultural and/or paleontological resource discovered by the operator or by any person working on the operator's behalf shall immediately report such findings to the Authorized Officer. The operator is fully accountable for the actions of their contractors and subcontractors. The operator shall suspend all operations in the immediate area of such discovery until written authorization to proceed is issued by the Authorized Officer. An evaluation of the discovery shall be made by the Authorized Officer to determine the appropriate actions that shall be required to prevent the loss of significant cultural or scientific values of the discovery. The operator shall be held responsible for the cost of the proper mitigation measures that the Authorized Officer assesses after consultation with the operator on the evaluation and decisions of the discovery. Any unauthorized collection or disturbance of cultural or paleontological resources may result in a shutdown order by the Authorized Officer.

## **IV. NOXIOUS WEEDS**

The operator shall be held responsible if noxious weeds become established within the areas of operations. Weed control shall be required on the disturbed land where noxious weeds exist, which includes the roads, pads, associated pipeline corridor, and adjacent land affected by the establishment of weeds due to this action. The operator shall consult with the Authorized Officer for acceptable weed control methods, which include following EPA and BLM requirements and policies.



## V. SPECIAL REQUIREMENT(S)

### **Fence Requirement:**

If the fence paralleling the highway is disturbed in any way by the construction, maintenance or removal of the pipeline, the fence will be repaired immediately or remedied by the operator causing the damage.

### **Timing Limitation Stipulation / Condition of Approval for lesser prairie-chicken:**

Oil and gas activities including 3-D geophysical exploration, and drilling will not be allowed in lesser prairie-chicken habitat during the period from March 1st through June 15th annually. During that period, other activities that produce noise or involve human activity, such as the maintenance of oil and gas facilities, pipeline, road, and well pad construction, will be allowed except between 3:00 am and 9:00 am. The 3:00 am to 9:00 am restriction will not apply to normal, around-the-clock operations, such as venting, flaring, or pumping, which do not require a human presence during this period. Additionally, no new drilling will be allowed within up to 200 meters of leks known at the time of permitting. Normal vehicle use on existing roads will not be restricted. Exhaust noise from pump jack engines must be muffled or otherwise controlled so as not to exceed 75 db measured at 30 feet from the source of the noise.

**Ground-level Abandoned Well Marker to avoid raptor perching:** Upon the plugging and subsequent abandonment of the well, the well marker will be installed at ground level on a plate containing the pertinent information for the plugged well. For more installation details, contact the Carlsbad Field Office at 575-234-5972.

## VI. CONSTRUCTION

### A. NOTIFICATION

The BLM shall administer compliance and monitor construction of the access road and well pad. Notify the Carlsbad Field Office at (575) 234-6235 at least 3 working days prior to commencing construction of the access road and/or well pad.

When construction operations are being conducted on this well, the operator shall have the approved APD and Conditions of Approval (COA) on the well site and they shall be made available upon request by the Authorized Officer.

### B. TOPSOIL

The operator shall stockpile the topsoil in a low profile manner in order to prevent wind/water erosion of the topsoil. The topsoil to be stripped is approximately 6 inches in depth. The topsoil will be used for interim and final reclamation.

**C. CLOSED LOOP SYSTEM**

Tanks are required for drilling operations: No Pits.

The operator shall properly dispose of drilling contents at an authorized disposal site.

**D. FEDERAL MINERAL MATERIALS PIT**

Payment shall be made to the BLM prior to removal of any federal mineral materials. Call the Carlsbad Field Office at (575) 234-5972.

**E. WELL PAD SURFACING**

Surfacing of the well pad is not required.

If the operator elects to surface the well pad, the surfacing material may be required to be removed at the time of reclamation.

The well pad shall be constructed in a manner which creates the smallest possible surface disturbance, consistent with safety and operational needs.

**F. ON LEASE ACCESS ROADS**

**Road Width**

The access road shall have a driving surface that creates the smallest possible surface disturbance and does not exceed fourteen (14) feet in width. The maximum width of surface disturbance, when constructing the access road, shall not exceed twenty (20) feet.

**Surfacing**

Surfacing material is not required on the new access road driving surface. If the operator elects to surface the new access road or pad, the surfacing material may be required to be removed at the time of reclamation.

Where possible, no improvements should be made on the unsurfaced access road other than to remove vegetation as necessary, road irregularities, safety issues, or to fill low areas that may sustain standing water.

The Authorized Officer reserves the right to require surfacing of any portion of the access road at any time deemed necessary. Surfacing may be required in the event the road deteriorates, erodes, road traffic increases, or it is determined to be beneficial for future

field development. The surfacing depth and type of material will be determined at the time of notification.

### Crowning

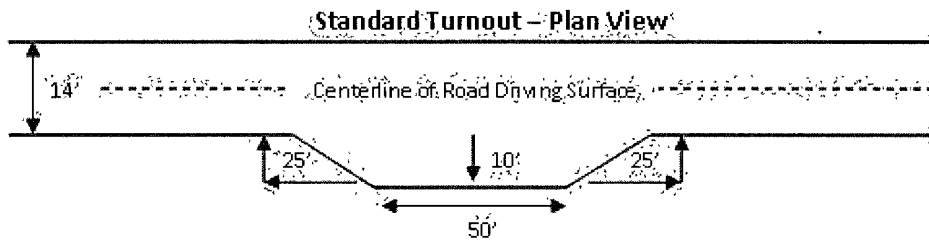
Crowning shall be done on the access road driving surface. The road crown shall have a grade of approximately 2% (i.e., a 1" crown on a 14' wide road). The road shall conform to Figure 1; cross section and plans for typical road construction.

### Ditching

Ditching shall be required on both sides of the road.

### Turnouts

Vehicle turnouts shall be constructed on the road. Turnouts shall be intervisible with interval spacing distance less than 1000 feet. Turnouts shall be constructed on all blind curves. Turnouts shall conform to the following diagram:

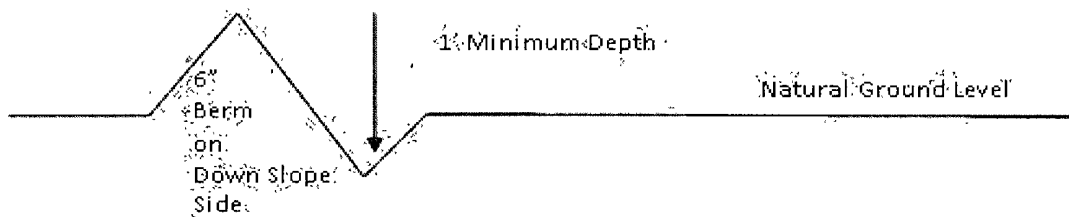


### Drainage

Drainage control systems shall be constructed on the entire length of road (e.g. ditches, sidehill outsloping and insloping, lead-off ditches, culvert installation, and low water crossings).

A typical lead-off ditch has a minimum depth of 1 foot below and a berm of 6 inches above natural ground level. The berm shall be on the down-slope side of the lead-off ditch.

### Cross Section of a Typical Lead-off Ditch



All lead-off ditches shall be graded to drain water with a 1 percent minimum to 3 percent maximum ditch slope. The spacing interval are variable for lead-off ditches and shall be

determined according to the formula for spacing intervals of lead-off ditches, but may be amended depending upon existing soil types and centerline road slope (in %);

#### **Formula for Spacing Interval of Lead-off Ditches**

Example - On a 4% road slope that is 400 feet long, the water flow shall drain water into a lead-off ditch. Spacing interval shall be determined by the following formula:

$$400 \text{ foot road with } 4\% \text{ road slope: } \frac{400'}{4\%} + 100' = 200' \text{ lead-off ditch interval}$$

#### **Culvert Installations**

Appropriately sized culvert(s) shall be installed at the deep waterway channel flow crossing.

#### **Cattleguards**

An appropriately sized cattleguard(s) sufficient to carry out the project shall be installed and maintained at fence crossing(s).

Any existing cattleguard(s) on the access road shall be repaired or replaced if they are damaged or have deteriorated beyond practical use. The operator shall be responsible for the condition of the existing cattleguard(s) that are in place and are utilized during lease operations.

A gate shall be constructed and fastened securely to H-braces.

#### **Fence Requirement**

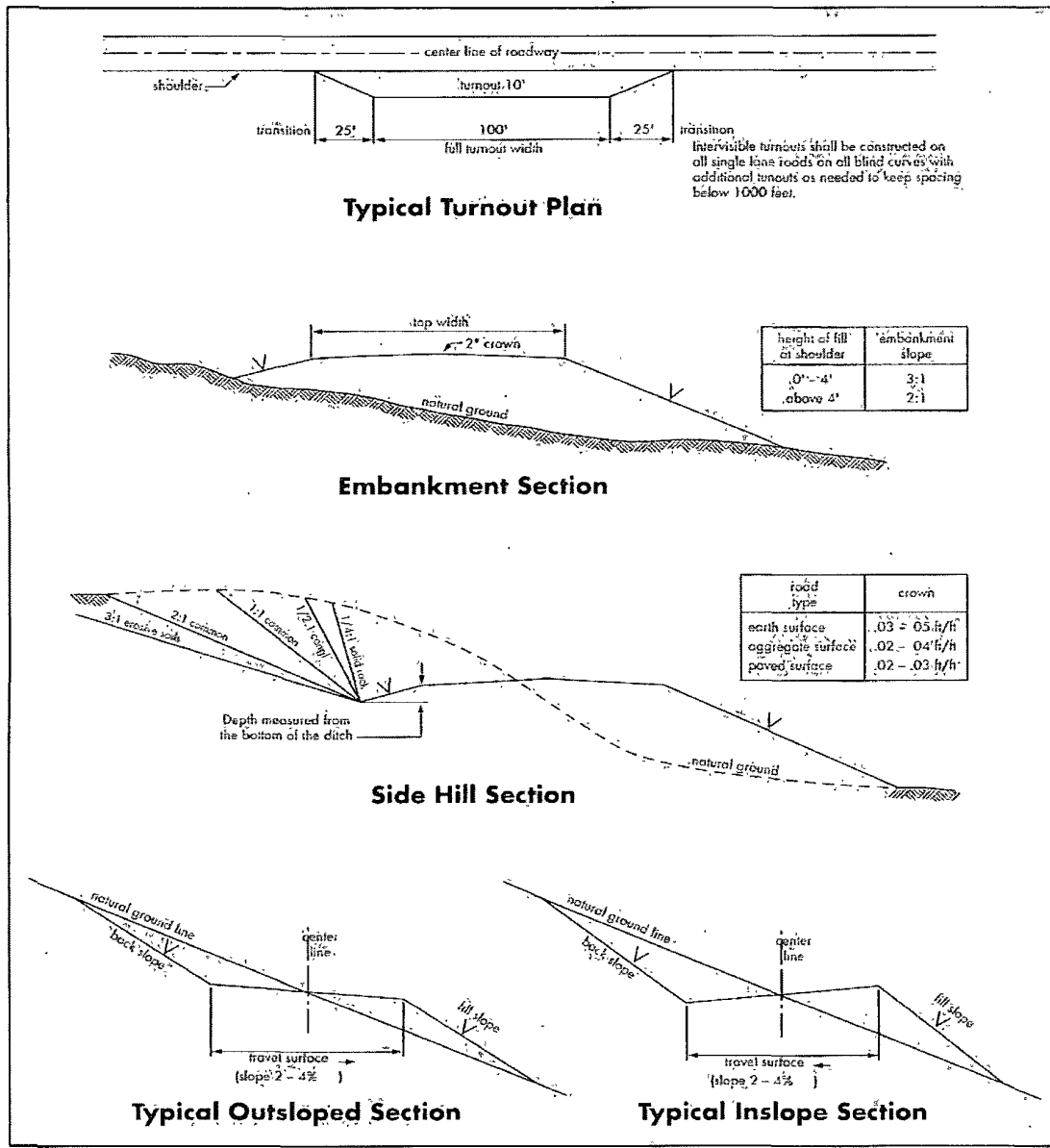
Where entry is required across a fence line, the fence shall be braced and tied off on both sides of the passageway prior to cutting.

The operator shall notify the private surface landowner or the grazing allotment holder prior to crossing any fence(s).

#### **Public Access**

Public access on this road shall not be restricted by the operator without specific written approval granted by the Authorized Officer.

Figure 1 – Cross Sections and Plans For Typical Road Sections



## VII. DRILLING

### A. DRILLING OPERATIONS REQUIREMENTS

The BLM is to be notified a minimum of 4 hours in advance for a representative to witness:

- a. Spudding well
- b. Setting and/or Cementing of all casing strings
- c. BOPE tests

**Eddy County**

Call the Carlsbad Field Office, 620 East Greene St., Carlsbad, NM 88220,  
(575) 361-2822

1. A Hydrogen Sulfide (H<sub>2</sub>S) Drilling Plan should be activated 500 feet prior to drilling into the **Grayburg** formation. **As a result, the Hydrogen Sulfide area must meet Onshore Order 6 requirements, which includes equipment and personnel/public protection items. If Hydrogen Sulfide is encountered, please provide measured values and formations to the BLM.**
2. Unless the production casing has been run and cemented or the well has been properly plugged, the drilling rig shall not be removed from over the hole without prior approval. **If the drilling rig is removed without approval – an Incident of Non-Compliance will be written and will be a “Major” violation.**
3. **The record of the drilling rate along with the GR/N well log run from TD to surface shall be submitted to the BLM office as well as all other logs run in the borehole 30 days from completion. If available, a digital copy of the logs is to be submitted in addition to the paper copies. The Rustler top and top and bottom of Salt are to be recorded on the Completion Report.**

### B. CASING

**Changes to the approved APD casing program need prior approval if the items substituted are of lesser grade or different casing size. The Operator can exchange the components of the proposal with that of superior strength (i.e. changing from J-55 to N-80, or from 36# to 40#).**

**Changes to the approved APD cement program need prior approval if the altered cement plan has less volume or strength or if the changes are substantial (i.e. Multistage tool, ECP, etc.).**

**Centralizers required on surface casing per Onshore Order 2.III.B.1.f.**

**Wait on cement (WOC) time prior to drilling out for a primary cement job will be a minimum 18 hours for a water basin, 24 hours in the potash area, or 500 pounds compressive strength, whichever is greater for all casing strings. DURING THIS WOC TIME, NO DRILL PIPE, ETC. SHALL BE RUN IN THE HOLE. Provide compressive strengths including hours to reach required 500 pounds compressive strength prior to cementing each casing string. See individual casing strings for details regarding lead cement slurry requirements.**

**No pea gravel permitted for remedial or fall back remedial without prior authorization from the BLM engineer.**

**Possible water and brine flows in the Salado and Artesia Groups.  
Possible lost circulation in the Grayburg and San Andres formations.**

1. The **13-3/8** inch surface casing shall be set at approximately **325** feet (**a minimum of 25 feet into the Rustler Anhydrite and above the salt**) and cemented to the surface.
  - a. For the surface casing: If cement does not circulate to the surface, the appropriate BLM office shall be notified and a tag with 1" will be performed at four positions 90 degrees apart to verify cement depth. WOC for tag to be a minimum of 6 hours. BLM Petroleum Engineer Technician to witness tags. If depth is greater than 100' or water is standing in the annulus, remedial cementing will be done. If no water and TOC tag is less than 100', when 100% excess cement of the annulus volume was run on the primary job, ready-mix can be used to bring cement to surface.
  - b. Wait on cement (WOC) time for a primary cement job is to include the lead cement slurry.**
  - c. Wait on cement (WOC) time for a remedial job will be a minimum of 4 hours after bringing cement to surface or 500 pounds compressive strength, whichever is greater.
  - d. If cement falls back, remedial cementing will be done prior to drilling out that string.

**NOTE: The Casing Head (A Section) shall remain permanently installed on the surface casing. A permanent Casing Spool (B Section) for the Intermediate Casing shall be installed on the Casing Head and tested prior to the nipple up and testing of the BOPE.**

2. The minimum required fill of cement behind the **8-5/8** inch intermediate casing is:
  - Cement to surface. If cement does not circulate see B.1.a, c-d above.

3. The minimum required fill of cement behind the **5-1/2** inch production casing is:
  - Cement should tie-back at least 3000' into previous casing string. (TOC at 500' or higher). Operator shall provide method of verification.
4. If hardband drill pipe is rotated inside casing, returns will be monitored for metal. If metal is found in samples, drill pipe will be pulled and rubber protectors which have a larger diameter than the tool joints of the drill pipe will be installed prior to continuing drilling operations.

### C. PRESSURE CONTROL

1. All blowout preventer (BOP) and related equipment (BOPE) shall comply with well control requirements as described in Onshore Oil and Gas Order No. 2 and API RP 53 Sec. 17.
2. Minimum working pressure of the blowout preventer (BOP) and related equipment (BOPE) required for drilling below the surface casing shoe shall be **2000 (2M)** psi.  
**NOTE: If a 2M psi WP system is not available, Operator is approved to utilize 3M psi BOP/BOPE as a 2M system.**
  - a. **For surface casing only:** If the BOP/BOPE is to be tested against casing, the wait on cement (WOC) time for that casing is to be met (see WOC statement at start of casing section). Independent service company required.
3. The appropriate BLM office shall be notified a minimum of 4 hours in advance for a representative to witness the tests.
  - a. In a water basin, for all casing strings utilizing slips, these are to be set as soon as the crew and rig are ready and any fallback cement remediation has been done. The casing cut-off and BOP installation can be initiated four hours after installing the slips, which will be approximately six hours after bumping the plug. For those casing strings not using slips or where the float does not hold, the minimum wait time before cut-off is eight hours after bumping the plug. BOP/BOPE testing can begin after cut-off or once cement reaches 500 psi compressive strength (including lead when specified), whichever is greater. However, if the float does not hold, cut-off cannot be initiated until cement reaches 500 psi compressive strength (including lead when specified).



- b. The tests shall be done by an independent service company utilizing a test plug **not a cup or J-packer**. The operator also has the option of utilizing an independent tester to test without a plug (i.e. against the casing) pursuant to Onshore Order 2 with the pressure not to exceed 70% of the burst rating for the casing. Any test against the casing must meet the WOC time for water basin (18 hours) or potash (24 hours) or 500 pounds compressive strength, whichever is greater, prior to initiating the test (see casing segment as lead cement may be critical item).
- c. The results of the test shall be reported to the appropriate BLM office.
- d. All tests are required to be recorded on a calibrated test chart. **A copy of the BOP/BOPE test chart and a copy of independent service company test will be submitted to the appropriate BLM office.**
- e. The BOP/BOPE test shall include a low pressure test from 250 to 300 psi. The test will be held for a minimum of 10 minutes if test is done with a test plug and 30 minutes without a test plug.

#### **D. DRILL STEM TEST**

If drill stem tests are performed, Onshore Order 2.III.D shall be followed.

#### **E. WASTE MATERIAL AND FLUIDS**

All waste (i.e. drilling fluids, trash, salts, chemicals, sewage, gray water, etc.) created as a result of drilling operations and completion operations shall be safely contained and disposed of properly at a waste disposal facility. No waste material or fluid shall be disposed of on the well location or surrounding area.

Porto-johns and trash containers will be on-location during fracturing operations or any other crew-intensive operations.

**TMM 012412**

## VIII. PRODUCTION (POST DRILLING)

### A. WELL STRUCTURES & FACILITIES

#### **Placement of Production Facilities**

Production facilities should be placed on the well pad to allow for maximum interim recontouring and revegetation of the well location.

#### **Containment Structures**

The containment structure shall be constructed to hold the capacity of the entire contents of the largest tank, plus 24 hour production, unless more stringent protective requirements are deemed necessary by the Authorized Officer.

#### **Painting Requirement**

All above-ground structures including meter housing that are not subject to safety requirements shall be painted a flat non-reflective paint color Shale Green, Munsell Soil Color Chart # 5Y 4/2

### B. PIPELINES

#### STANDARD STIPULATIONS FOR SURFACE INSTALLED PIPELINES

**A copy of the APD and attachments, including stipulations, survey plat and/or map, will be on location during construction. BLM personnel may request to you a copy of your permit during construction to ensure compliance with all stipulations.**

Holder agrees to comply with the following stipulations to the satisfaction of the Authorized Officer:

1. The holder shall indemnify the United States against any liability for damage to life or property arising from the occupancy or use of public lands under this grant.
2. The holder shall comply with all applicable Federal laws and regulations existing or hereafter enacted or promulgated. In any event, the holder shall comply with the Toxic Substances Control Act of 1976 as amended, 15 USC 2601 et seq. (1982) with regards to any toxic substances that are used, generated by or stored on the right-of-way or on facilities authorized under this right-of-way grant. (See 40 CFR, Part 702-799 and especially, provisions on polychlorinated biphenyls, 40 CFR 761.1-761.193.) Additionally, any release of toxic substances (leaks, spills, etc.) in excess of the reportable quantity established by 40 CFR, Part 117 shall be reported as required by the Comprehensive Environmental Response, Compensation, and Liability Act, section 102b. A copy of any report required or requested by any Federal agency or State government as a result of a reportable release or spill of any toxic substances shall be furnished to the authorized officer concurrent with the filing of the reports to the involved Federal agency or State government.
3. The holder agrees to indemnify the United States against any liability arising from the

release of any hazardous substance or hazardous waste (as these terms are defined in the Comprehensive Environmental Response, Compensation and Liability Act of 1980, 42 U.S.C. 9601, et seq. or the Resource Conservation and Recovery Act, 42 U.S.C. 6901, et seq.) on the Right-of-Way (unless the release or threatened release is wholly unrelated to activity of the Right-of-Way holder's activity on the Right-of-Way), or resulting from the activity of the Right-of-Way holder on the Right-of-Way. This agreement applies without regard to whether a release is caused by the holder, its agent, or unrelated third parties.

4. The holder shall be liable for damage or injury to the United States to the extent provided by 43 CFR Sec. 2883.1-4. The holder shall be held to a standard of strict liability for damage or injury to the United States resulting from pipe rupture, fire, or spills caused or substantially aggravated by any of the following within the right-of-way or permit area:

- a. Activities of the holder including, but not limited to construction, operation, maintenance, and termination of the facility.
- b. Activities of other parties including, but not limited to:
  - (1) Land clearing.
  - (2) Earth-disturbing and earth-moving work.
  - (3) Blasting.
  - (4) Vandalism and sabotage.
- c. Acts of God.

The maximum limitation for such strict liability damages shall not exceed one million dollars (\$1,000,000) for any one event, and any liability in excess of such amount shall be determined by the ordinary rules of negligence of the jurisdiction in which the damage or injury occurred.

This section shall not impose strict liability for damage or injury resulting primarily from an act of war or from the negligent acts or omissions of the United States.

5. If, during any phase of the construction, operation, maintenance, or termination of the pipeline, any oil, salt water, or other pollutant should be discharged from the pipeline system, impacting Federal lands, the control and total removal, disposal, and cleaning up of such oil, salt water, or other pollutant, wherever found, shall be the responsibility of the holder, regardless of fault. Upon failure of the holder to control, dispose of, or clean up such discharge on or affecting Federal lands, or to repair all damages resulting therefrom, on the Federal lands, the Authorized Officer may take such measures as he deems necessary to control and clean up the discharge and restore the area, including, where appropriate, the aquatic environment and fish and wildlife habitats, at the full expense of the holder. Such action by the Authorized Officer shall not relieve the holder of any responsibility as provided herein.

6. The pipeline shall be routed no farther than 6 feet from and parallel to existing roads and within 2 feet of the highway boundary fence. The authorized right-of-way width will be 20 feet. 14 feet of the right-of-way width will consist of existing disturbance (existing lease roads) and the remaining 6 feet will consist of area adjacent to the disturbance. All construction and maintenance activity will be confined to existing roads.

7. No blading or clearing of any vegetation will be allowed unless approved in writing by the Authorized Officer.

8. The holder shall install the pipeline on the surface in such a manner that will minimize suspension of the pipeline across low areas in the terrain. In hummocky or dune areas, the pipeline will be "snaked" around hummocks and dunes rather than suspended across these features.

9. The pipeline shall be buried with a minimum of 24 inches under all roads, "two-tracks," and trails. Burial of the pipe will continue for 20 feet on each side of each crossing. The condition of the road, upon completion of construction, shall be returned to at least its former state with no bumps or dips remaining in the road surface.

10. The holder shall minimize disturbance to existing fences and other improvements on public lands. The holder is required to promptly repair improvements to at least their former state. Functional use of these improvements will be maintained at all times. The holder will contact the owner of any improvements prior to disturbing them. When necessary to pass through a fence line, the fence shall be braced on both sides of the passageway prior to cutting of the fence. No permanent gates will be allowed unless approved by the Authorized Officer.

11. In those areas where erosion control structures are required to stabilize soil conditions, the holder will install such structures as are suitable for the specific soil conditions being encountered and which are in accordance with sound resource management practices.

12. Excluding the pipe, all above-ground structures not subject to safety requirement shall be painted by the holder to blend with the natural color of the landscape. The paint used shall be a color which simulates "Standard Environmental Colors" – **Shale Green**, Munsell Soil Color No. 5Y 4/2; designated by the Rocky Mountain Five State Interagency Committee.

13. The pipeline will be identified by signs at the point of origin and completion of the right-of-way and at all road crossings. At a minimum, signs will state the holder's name, BLM serial number, and the product being transported. Signs will be maintained in a legible condition for the life of the pipeline.

14. The holder shall not use the pipeline route as a road for purposes other than routine

maintenance as determined necessary by the Authorized Officer in consultation with the holder. The holder will take whatever steps are necessary to ensure that the pipeline route is not used as a roadway.

15. Any cultural and/or paleontological resource (historic or prehistoric site or object) discovered by the holder, or any person working on his behalf, on public or Federal land shall be immediately reported to the authorized officer. Holder shall suspend all operations in the immediate area of such discovery until written authorization to proceed is issued by the authorized officer. An evaluation of the discovery will be made by the authorized officer to determine appropriate cultural or scientific values. The holder will be responsible for the cost of evaluation and any decision as to proper mitigation measures will be made by the authorized officer after consulting with the holder.

16. The operator shall be held responsible if noxious weeds become established within the areas of operations. Weed control shall be required on the disturbed land where noxious weeds exist, which includes the roads, powerline corridor, and adjacent land affected by the establishment of weeds due to this action. The operator shall consult with the Authorized Officer for acceptable weed control methods, which include following EPA and BLM requirements and policies.

## **IX. INTERIM RECLAMATION**

During the life of the development, all disturbed areas not needed for active support of production operations should undergo interim reclamation in order to minimize the environmental impacts of development on other resources and uses.

Within six (6) months of well completion, operators should work with BLM surface management specialists (Jim Amos: 575-234-5909) to devise the best strategies to reduce the size of the location. Interim reclamation should allow for remedial well operations, as well as safe and efficient removal of oil and gas.

During reclamation, the removal of caliche is important to increasing the success of revegetating the site. Removed caliche that is free of contaminants may be used for road repairs, fire walls or for building other roads and locations. In order to operate the well or complete workover operations, it may be necessary to drive, park and operate on restored interim vegetation within the previously disturbed area. Disturbing revegetated areas for production or workover operations will be allowed. If there is significant disturbance and loss of vegetation, the area will need to be revegetated. Communicate with the appropriate BLM office for any exceptions/exemptions if needed.

All disturbed areas after they have been satisfactorily prepared need to be reseeded with the seed mixture provided below.

Upon completion of interim reclamation, the operator shall submit a Sundry Notices and Reports on Wells, Subsequent Report of Reclamation (Form 3160-5).

## **X. FINAL ABANDONMENT & RECLAMATION**

At final abandonment, well locations, production facilities, and access roads must undergo "final" reclamation so that the character and productivity of the land are restored.

Earthwork for final reclamation must be completed within six (6) months of well plugging. All pads, pits, facility locations and roads must be reclaimed to a satisfactory revegetated, safe, and stable condition, unless an agreement is made with the landowner or BLM to keep the road and/or pad intact.

After all disturbed areas have been satisfactorily prepared, these areas need to be revegetated with the seed mixture provided below. Seeding should be accomplished by drilling on the contour whenever practical or by other approved methods. Seeding may need to be repeated until revegetation is successful, as determined by the BLM.

Operators shall contact a BLM surface protection specialist prior to surface abandonment operations for site specific objectives (Jim Amos: 575-234-5909).

Ground-level Abandoned Well Marker to avoid raptor perching: Upon the plugging and subsequent abandonment of the well, the well marker will be installed at ground level on a plate containing the pertinent information for the plugged well.

Seed Mixture 1, for Loamy Sites

The holder shall seed all disturbed areas with the seed mixture listed below. The seed mixture shall be planted in the amounts specified in pounds of pure live seed (PLS)\* per acre. There shall be no primary or secondary noxious weeds in the seed mixture. Seed will be tested and the viability testing of seed will be done in accordance with State law(s) and within nine (9) months prior to purchase. Commercial seed will be either certified or registered seed. The seed container will be tagged in accordance with State law(s) and available for inspection by the authorized officer.

Seed will be planted using a drill equipped with a depth regulator to ensure proper depth regulator to ensure proper depth of planting where drilling is possible. The seed mixture will be evenly and uniformly planted over the disturbed area (small/heavier seeds have a tendency to drop the bottom of the drill and are planted first). The holder shall take appropriate measures to ensure this does not occur. Where drilling is not possible, seed will be broadcast and the area shall be raked or chained to cover the seed. When broadcasting the seed, the pounds per acre are to be doubled. The seeding will be repeated until a satisfactory stand is established as determined by the authorized officer. Evaluation of growth will not be made before completion of at least one full growing season after seeding.

Species to be planted in pounds of pure live seed\* per acre:

<u>Species</u>	<u>lb/acre</u>
Plains lovegrass ( <i>Eragrostis intermedia</i> )	0.5
Sand dropseed ( <i>Sporobolus cryptandrus</i> )	1.0
Sideoats grama ( <i>Bouteloua curtipendula</i> )	5.0
Plains bristlegrass ( <i>Setaria macrostachya</i> )	2.0

\*Pounds of pure live seed:

Pounds of seed x percent purity x percent germination = pounds pure live seed