

DISTRICT I  
1625 N. French Dr., Hobbs, NM 88240  
Phone (575) 393-6161 Fax (575) 393-0720

DISTRICT II  
811 S. First St., Artesia, NM 88210  
Phone: (575) 748-1283 Fax: (575) 748-9720

DISTRICT III  
1000 Rio Brazos Road, Aztec, NM 87410  
Phone: (505) 334-6178 Fax: (505) 334-6170

DISTRICT IV  
1220 S. St. Francis Dr., Santa Fe, NM 87505  
Phone: (505) 476-3460 Fax: (505) 476-3462

State of New Mexico  
Energy, Minerals & Natural Resources Department

OIL CONSERVATION DIVISION

1220 South St. Francis Dr.  
Santa Fe, New Mexico 87505

Form C-102

Revised August 1, 2011

Submit one copy to appropriate  
District Office

RECEIVED

MAR 13 2012 AMENDED REPORT

WELL LOCATION AND ACREAGE DEDICATION PLAT

INMOCD ARTESIA

API Number <b>30-015-38991</b>	Pool Code	Well Number <b>50H</b>
Property Code <b>303152</b>	Property Name <b>NASH UNIT</b>	Elevation <b>2018'</b>
OGRID No <b>5380</b>	Operator Name <b>XTO ENERGY</b>	

Surface Location

UL or lot No.	Section	Township	Range	Lot Idn	Feet from the	North/South line	Feet from the	East/West line	County
I	13	23-S	29-E		1980	SOUTH	200	EAST	EDDY

Bottom Hole Location If Different From Surface

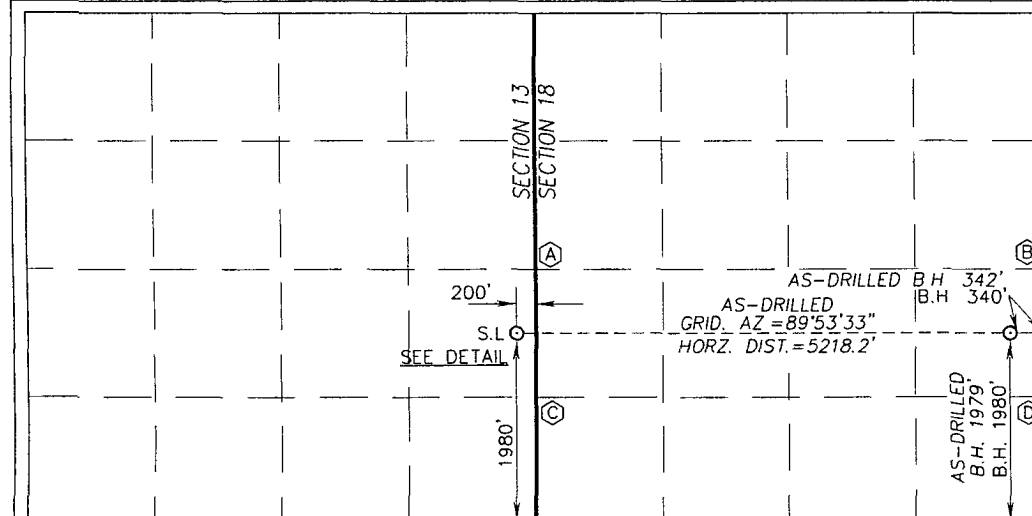
UL or lot No.	Section	Township	Range	Lot Idn	Feet from the	North/South line	Feet from the	East/West line	County
I	18	23-S	30-E		1980	SOUTH	340	EAST	EDDY

As-Drilled Bottom Hole Location

UL or lot No.	Section	Township	Range	Lot Idn	Feet from the	North/South line	Feet from the	East/West line	County
I	18	23-S	30-E		1979	SOUTH	342	EAST	EDDY

Dedicated Acres	Joint or Infill	Consolidation Code	Order No
-----------------	-----------------	--------------------	----------

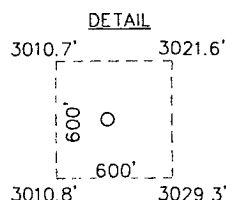
NO ALLOWABLE WILL BE ASSIGNED TO THIS COMPLETION UNTIL ALL INTERESTS HAVE BEEN CONSOLIDATED OR A NON-STANDARD UNIT HAS BEEN APPROVED BY THE DIVISION



CORNER COORDINATES TABLE	
Ⓐ -	Y=474879.6 N, X=624874.1 E
Ⓑ -	Y=474889.3 N, X=630232.2 E
Ⓒ -	Y=473552.9 N, X=624879.5 E
Ⓓ -	Y=473563.5 N, X=630239.0 E

GEODETIC COORDINATES  
NAD 27 NME  
SURFACE LOCATION  
Y=474205.8 N  
X=624676.8 E  
LAT = 32.303063° N  
LONG. = 103.929812° W  
BOTTOM HOLE LOCATION  
Y=474216.5 N  
X=629895.7 E

AS-DRILLED BOTTOM HOLE  
LOCATION  
Y=474215.6 N  
X=629893.9 E



OPERATOR CERTIFICATION

I hereby certify that the information herein is true and complete to the best of my knowledge and belief, and that this organization either owns a working interest or unleased mineral interest in the land including the proposed bottom hole location or has a right to drill this well at this location pursuant to a contract with an owner of such mineral or working interest, or to a voluntary pooling agreement or a compulsory pooling order heretofore entered by the division

Signature Chip Amrock 3/5/12 Date

Printed Name Chip Amrock

E-mail Address

SURVEYOR CERTIFICATION

I hereby certify that the well location shown on this plat was plotted from field notes of actual surveys made by me or under my supervision, and that the same is true and correct to the best of my belief

OCTOBER 20, 2010

Date of Survey  
Signature & Seal of Professional Surveyor

Certificate Number Gary Eidson 12641  
Professional Surveyor Ronald Eidson 3239  
DSS Rel. 10/11/10 WSC W O 12.13 0453