

UNITED STATES
DEPARTMENT OF THE INTERIOR
BUREAU OF LAND MANAGEMENT

OCD Artesia

FORM APPROVED
OMB NO. 1004-0135
Expires: July 31, 2010**SUNDRY NOTICES AND REPORTS ON WELLS**
Do not use this form for proposals to drill or to re-enter an abandoned well. Use form 3160-3 (APD) for such proposals.5. Lease Serial No.
NMLC028793C

6. If Indian, Allottee or Tribe Name

SUBMIT IN TRIPLICATE - Other instructions on reverse side.7. If Unit or CA/Agreement, Name and/or No
NMNM88525X

1. Type of Well

☒ Oil Well ☐ Gas Well ☐ Other8. Well Name and No
BURCH KEELY UNIT 814H

2. Name of Operator

COG OPERATING LLC

Contact: KELLY J HOLLY

E-Mail: kholly@conchoresources.com

9. API Well No.

30-015-39573-00-X1

3a. Address

550 WEST TEXAS AVENUE SUITE 100
MIDLAND, TX 79701

3b. Phone No. (include area code)

Ph: 432-685-4384

10. Field and Pool, or Exploratory
GRAYBURG JACKSON

4. Location of Well (Footage, Sec., T., R., M., or Survey Description)

Sec 18 T17S R30E NWNW Lot 1 1152FNL 497FWL

11. County or Parish, and State

EDDY COUNTY, NM

12. CHECK APPROPRIATE BOX(ES) TO INDICATE NATURE OF NOTICE, REPORT, OR OTHER DATA

TYPE OF SUBMISSION

TYPE OF ACTION

☒ Notice of Intent☐ Subsequent Report☐ Final Abandonment Notice☐ Acidize☐ Alter Casing☐ Casing Repair☐ Change Plans☐ Convert to Injection☐ Deepen☐ Fracture Treat☐ New Construction☐ Plug and Abandon☐ Plug Back☐ Production (Start/Resume)☐ Reclamation☐ Recomplete☐ Temporarily Abandon☐ Water Disposal☐ Water Shut-Off☐ Well Integrity☒ Other
Change to Original A
PD

13. Describe Proposed or Completed Operation (clearly state all pertinent details, including estimated starting date of any proposed work and approximate duration thereof. If the proposal is to deepen directionally or recompleat horizontally, give subsurface locations and measured and true vertical depths of all pertinent markers and zones. Attach the Bond under which the work will be performed or provide the Bond No. on file with BLM/BIA. Required subsequent reports shall be filed within 30 days following completion of the involved operations. If the operation results in a multiple completion or recompleat in a new interval, a Form 3160-4 shall be filed once testing has been completed. Final Abandonment Notices shall be filed only after all requirements, including reclamation, have been completed, and the operator has determined that the site is ready for final inspection.)

COG Operating respectfully requests permission to change this well name to:

Burch Keely Unit 18 Federal #2H

A Revised C-102 is attached for your review.

**SUBJECT TO LIKE
APPROVAL BY STATE**Accepted for record
NMOCD

10/12/11/2011

RECEIVED

DEC 16 2011

NMOCD ARTESIA

Property Code: 39039 aff 1-1-12

14. I hereby certify that the foregoing is true and correct

Electronic Submission #125029 verified by the BLM Well Information System

For COG OPERATING LLC, sent to the Carlsbad

Committed to AFMSS for processing by JAMES (JIM) HUGHES on 12/08/2011 (12JLH0114SE)

Name (Printed/Typed) KELLY J HOLLY

Title PERMITTING TECH

Signature (Electronic Submission)

Date 12/07/2011

THIS SPACE FOR FEDERAL OR STATE OFFICE USE

Approved By

J. D. Z. Little

Title LPEI

Date 12/14/11

Conditions of approval, if any, are attached. Approval of this notice does not warrant or certify that the applicant holds legal or equitable title to those rights in the subject lease which would entitle the applicant to conduct operations thereon.

Office

CFO

Title 18 U.S.C. Section 1001 and Title 43 U.S.C. Section 1212, make it a crime for any person knowingly and willfully to make to any department or agency of the United States any false, fictitious or fraudulent statements or representations as to any matter within its jurisdiction.

**** BLM REVISED ** BLM REVISED ** BLM REVISED ** BLM REVISED ** BLM REVISED ****

DISTRICT I
1625 N. French Dr., Hobbs, NM 88240
Phone: (575) 393-6161 Fax: (575) 393-0720
DISTRICT II
811 S. First St., Artesia, NM 88210
Phone: (575) 748-1283 Fax: (575) 748-9720
DISTRICT III
1000 Rio Brazos Road, Aztec, NM 87410
Phone: (505) 334-6178 Fax: (505) 334-6170
DISTRICT IV
1220 S. St. Francis Dr., Santa Fe, NM 87505
Phone: (505) 476-3460 Fax: (505) 476-3462

State of New Mexico
Energy, Minerals & Natural Resources Department
OIL CONSERVATION DIVISION
1220 South St. Francis Dr.
Santa Fe, New Mexico 87505

Form C-102
Revised August 1, 2011
Submit one copy to appropriate
District Office

☐ AMENDED REPORT

WELL LOCATION AND ACREAGE DEDICATION PLAT

API Number 30-015	Pool Code 28509	Pool Name Grayburg Jackson; SR-Q-G-SA
Property Code 308086 39039	Property Name BURCH KEELY UNIT 18 FEDERAL	Well Number 2H
OGRID No. 229137	Operator Name COG OPERATING, LLC	Elevation 3639'

Surface Location

UL or lot No.	Section	Township	Range	Lot Idn	Feet from the	North/South line	Feet from the	East/West line	County
1	18	17-S	30-E		1152	NORTH	497	WEST	EDDY

Bottom Hole Location If Different From Surface

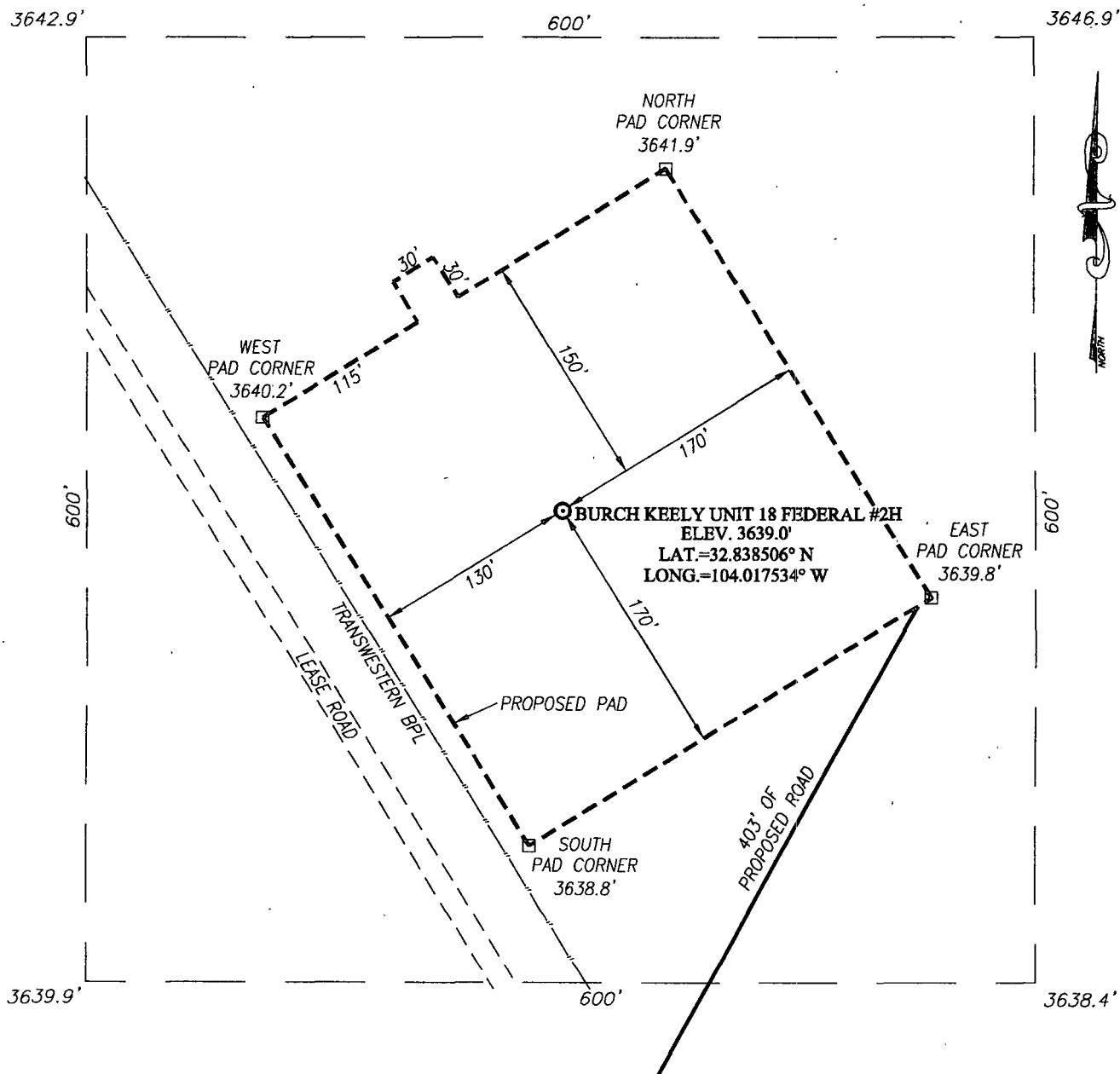
UL or lot No.	Section	Township	Range	Lot Idn	Feet from the	North/South line	Feet from the	East/West line	County
A	18	17-S	30-E		990	NORTH	330	EAST	EDDY

Dedicated Acres	Joint or Infill	Consolidation Code	Order No.
160			

NO ALLOWABLE WILL BE ASSIGNED TO THIS COMPLETION UNTIL ALL INTERESTS HAVE BEEN CONSOLIDATED OR A NON-STANDARD UNIT HAS BEEN APPROVED BY THE DIVISION

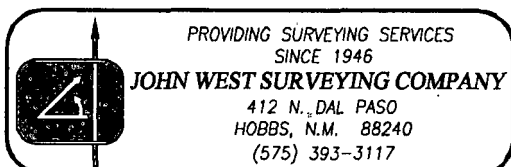
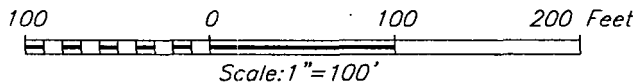
<p>Project Area Producing Area</p> <p>GRID AZ. - 87° 37' 50" HORZ. DIST. - 4370.5'</p> <p>SEE DETAIL 497' 37.37 AC.</p> <p>3642.9' 3646.9' 600' 3639.9' 3638.4'</p> <p>DETAILED</p> <p>37.39 AC. LOT 3</p> <p>37.41 AC. LOT 4</p> <p>37.43 AC.</p> <p>GEODETTIC COORDINATES NAD 27 NME SURFACE LOCATION Y=668904.6 N X=596995.1 E</p> <p>LAT.=32.838506° N LONG.=104.017534° W BOTTOM HOLE LOCATION Y=669085.3 N X=601360.8 E</p> <p>SECTION, QUARTER & SIXTEENTH CORNER COORDINATES</p> <p>Ⓐ - Y=670054.6, X=596494.2 Ⓑ - Y=668735.8, X=596498.7 Ⓒ - Y=670064.7, X=599047.3 Ⓓ - Y=670076.5, X=601687.3 Ⓔ - Y=668756.7, X=601691.8</p>	<p>OPERATOR CERTIFICATION</p> <p>I hereby certify that the information herein is true and complete to the best of my knowledge and belief, and that this organization either owns a working interest or unleased mineral interest in the land including the proposed bottom hole location or has a right to drill this well at this location pursuant to a contract with an owner of such mineral or working interest, or to a voluntary pooling agreement or a compulsory pooling order heretofore entered by the division.</p> <p> 12-6-11 Signature Date Kelly J. Holly Printed Name kholly@concho.com E-mail Address</p> <p>SURVEYOR CERTIFICATION</p> <p>I hereby certify that the well location shown on this plat was plotted from field notes of actual surveys made by me or under my supervision, and that the same is true and correct to the best of my belief.</p> <p>JULY 13, 2011</p> <p>Date of Survey Signature & Seal of Professional Surveyor: Certificate Number Gary G. Eidson 12641 Ronald J. Eidson 3239 AF JWSC W.O. 11.13 2463</p>
--------------------------------------------------------------------------------------------------------------------------------------------------------------------------------------------------------------------------------------------------------------------------------------------------------------------------------------------------------------------------------------------------------------------------------------------------------------------------------------------------------------------------------------------------------------------------------------------------------------------------------------------------------------------------------------------------------------------------	------------------------------------------------------------------------------------------------------------------------------------------------------------------------------------------------------------------------------------------------------------------------------------------------------------------------------------------------------------------------------------------------------------------------------------------------------------------------------------------------------------------------------------------------------------------------------------------------------------------------------------------------------------------------------------------------------------------------------------------------------------------------------------------------------------------------------------------------------------------------------------------------------------------------------------------------------------------------------------------------------------------------------------------------------------------------------------------------------------------------

SECTION 18, TOWNSHIP 17 SOUTH, RANGE 30 EAST, N.M.P.M.,
 EDDY COUNTY, NEW MEXICO



DIRECTIONS TO LOCATION

FROM THE INTERSECTION OF U.S. HWY. #82 AND CO. RD. #215 (KEWANEE), GO NORTH ON KEWANEE ROAD APPROX. 1.0 MILE. TURN RIGHT AND GO EAST APPROX. 1.2 MILES. TURN LEFT ON TWO TRACK ROAD AND GO NORTHWEST APPROX. 0.2 MILES. THIS LOCATION IS APPROX. 190 FEET EAST OF TWO TRACK ROAD.



COG OPERATING, LLC

BURCH KEELY UNIT 18 FEDERAL #2H WELL
 LOCATED 1152 FEET FROM THE NORTH LINE
 AND 497 FEET FROM THE WEST LINE OF SECTION 18,
 TOWNSHIP 17 SOUTH, RANGE 30 EAST, N.M.P.M.,
 EDDY COUNTY, NEW MEXICO

Survey Date: 7/13/11	Sheet 1 of 1 Sheets
W.O. Number: 11.13.2463	Dr By: AF
Date: 11/21/11	REL WO: 11111487
11132463	Scale: 1"=100'