

## District I

1625 N French Dr., Hobbs, NM 88240

## District II

1301 W Grand Avenue, Artesia, NM 88210

## District III

1000 Rio Brazos Road, Aztec, NM 87410

## District IV

1220 S St Francis Dr., Santa Fe, NM 87505

State of New Mexico  
Energy Minerals and Natural Resources

Form C-101

May 27, 2004

Oil Conservation Division  
1220 South St. Francis Dr.  
Santa Fe, NM 87505

Submit to appropriate District Office

☐ AMENDED REPORT

## APPLICATION FOR PERMIT TO DRILL, RE-ENTER, DEEPEN, PLUGBACK, OR ADD A ZONE

Operator Name and Address Mack Energy Corporation P.O. Box 960 Artesia, NM 88211-0960		OGRID Number 013837
		API Number 30- 015-33407
Property Code 33980	Property Name Boa State <del>Comm</del>	Well No 1
Proposed Pool 1 <i>Sig &amp; Grosst Draw</i> ; Abo		Proposed Pool 2

## 7 Surface Location

UL or lot no	Section	Township	Range	Lot Idn	Feet from the	North/South line	Feet from the	East/West line	County
D	36	19S	23E		660	North	660	West	Eddy

## 8 Proposed Bottom Hole Location If Different From Surface

UL or lot no	Section	Township	Range	Lot Idn	Feet from the	North/South line	Feet from the	East/West line	County

## Additional Well Information

Work Type Code PB	Well Type Code Oil	" Cable/Rotary	Lease Type Code S	Ground Level Elevation 3896' GR
Multiple No	" Proposed Depth 3935'	" Formation Abo	Contractor	Spud Date 10/3/2011
Depth to Groundwater 145'		Distance from nearest fresh water well 1000'		Distance from nearest surface water 1000'
Pit Liner Synthetic <input type="checkbox"/> _____ mils thick Clay <input type="checkbox"/> Pit Volume: _____ bbls Drilling Method - Closed-Loop System <input checked="" type="checkbox"/> Fresh Water <input checked="" type="checkbox"/> Brine <input type="checkbox"/> Diesel/Oil-based <input type="checkbox"/> Gas/Air <input type="checkbox"/>				

## 21 Proposed Casing and Cement Program

Hole Size	Casing Size	Casing weight/foot	Setting Depth	Sacks of Cement	Estimated TOC
12 1/4	8 5/8	24	1300	380sx	Surface/In place
7 7/8	5 1/2	17	7130	1400sx	Surface/In place

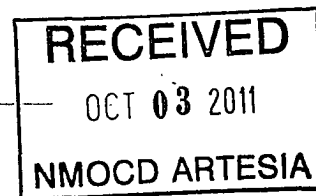
2 Describe the proposed program. If this application is to DEEPEN or PLUG BACK, give the data on the present productive zone and proposed new productive zone

Describe the blowout prevention program, if any. Use additional sheets if necessary.

Mack Energy Corporation proposes to Plug-back to Abo formation and re-complete as follows:

Set CIBP @ 4100' w/35' cmt cap.

Perforate 3820.5-3939.5'.



I hereby certify that the information given above is true and complete to the best of my knowledge and belief I further certify that the drilling pit will be constructed according to NMOC D guidelines <input checked="" type="checkbox"/> a general permit <input type="checkbox"/> or an (attached) alternative OCD-approved plan. <input type="checkbox"/>		OIL CONSERVATION DIVISION	
Signature <i>Jerry W. Sherrell</i>		Approved by: <i>J. C. Shepard</i>	
Printed name: Jerry W. Sherrell		Title: <i>Geologist</i>	
Title: Production Clerk		Approval Date: <i>3/28/2012</i> Expiration Date: <i>3/28/2014</i>	
E-mail Address: jerrys@mec.com			
Date: 9/30/11	Phone: (575)748-1288	Conditions of Approval <input checked="" type="checkbox"/> provide current form C-102	

DISTRICT I  
P.O. Box 1980, Hobbs, NM 88241-1980

State of New Mexico  
Energy, Minerals and Natural Resources Department

Form C-102  
Revised February 10, 1994  
Submit to Appropriate District Office  
State Lease - 4 Copies  
Fee Lease - 3 Copies

DISTRICT II  
P.O. Drawer DD, Artesia, NM 88211-0719

DISTRICT III  
1000 Rio Brazos Rd., Aztec, NM 87410

DISTRICT IV  
P.O. BOX 2088, SANTA FE, N.M. 87504-2088

## OIL CONSERVATION DIVISION

P.O. Box 2088  
Santa Fe, New Mexico 87504-2088

☐ AMENDED REPORT

### WELL LOCATION AND ACREAGE DEDICATION PLAT

API Number 30-015-33407	Pool Code 96215	Pool Name Siegrest Draw; Abo
Property Code 33980	Property Name BOA STATE	Well Number 1
OGRID No. 013837	Operator Name MACK ENERGY CORPORATION	Elevation 3896'

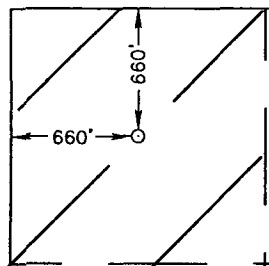
#### Surface Location

UL or lot No. D	Section 36	Township 19 S	Range 23 E	Lot Idn	Feet from the 660	North/South line NORTH	Feet from the 660	East/West line WEST	County EDDY
--------------------	---------------	------------------	---------------	---------	----------------------	---------------------------	----------------------	------------------------	----------------

#### Bottom Hole Location If Different From Surface

UL or lot No.	Section	Township	Range	Lot Idn	Feet from the	North/South line	Feet from the	East/West line	County
Dedicated Acres 40	Joint or Infill	Consolidation Code	Order No.						

NO ALLOWABLE WILL BE ASSIGNED TO THIS COMPLETION UNTIL ALL INTERESTS HAVE BEEN CONSOLIDATED  
OR A NON-STANDARD UNIT HAS BEEN APPROVED BY THE DIVISION

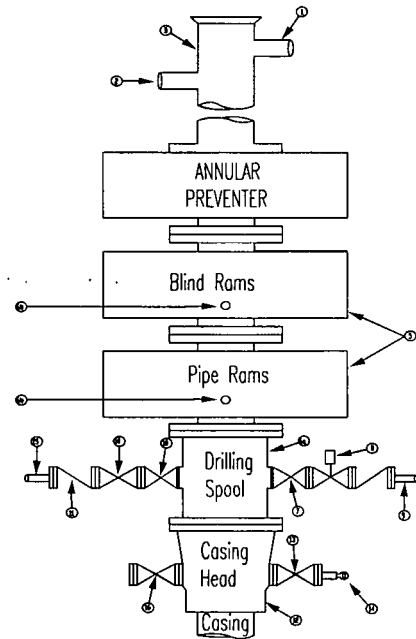
 <p>GEODETIC COORDINATE NAD 27 NME Y=590372.4 N X=402275.7 E LAT.=32°37'21.49" N LONG.=104°39'02.67" W</p>	<p><b>RECEIVED</b> OCT 03 2011 NMOCD ARTESIA</p>	<p><b>OPERATOR CERTIFICATION</b> I hereby certify the the information contained herein is true and complete to the best of my knowledge and belief.</p> <p><i>Jerry W. Sherrell</i> Signature Jerry W. Sherrell Printed Name Production Clerk Title 10-3-2011 Date</p>
		<p><b>SURVEYOR CERTIFICATION</b> I hereby certify that the well location shown on this plat was plotted from field notes of actual surveys made by me or under my supervision, and that the same is true and correct to the best of my belief.</p> <p>APRIL 28, 2004</p> <p>Date Surveyed Signature &amp; Seal of Professional Surveyor Barry G. Eidson NEW MEXICO 04-11-0467 Certificate No. CARY EIDSON 12841</p>

SCANNED

**Mack Energy Corporation**  
**Minimum Blowout Preventer Requirements**  
**3000 psi Working Pressure**  
**13 3/8 inch- 3 MWP**  
**11 Inch - 3 MWP**  
**EXHIBIT #1**

**Stack Requirements**

NO	Items	Min. I.D.	Min. Nominal
1	Flowline		2"
2	Fill up line		2"
3	Drilling nipple		
4	Annular preventer		
5	Two single or one dual hydraulically operated rams		
6a	Drilling spool with 2" min kill line and 3" min choke line outlets		2" Choke
6b	2" min kill line and 3" min. choke line outlets in ram (Alternate to 6a above)		
7	Valve Gate Plug	3 1/8	
8	Gate valve-power operated	3 1/8	
9	Line to choke manifold		3"
10	Valve Gate Plug	2 1/16	
11	Check valve	2 1/16	
12	Casing head		
13	Valve Gate Plug	1 13/16	
14	Pressure gauge with needle valve		
15	Kill line to rig mud pump manifold		2"



**OPTIONAL**

16	Flanged Valve	1 13/16	
----	---------------	---------	--

**CONTRACTOR'S OPTION TO FURNISH:**

1. All equipment and connections above bradenhead or casinghead. Working pressure of preventers to be 2000 psi minimum
2. Automatic accumulator (80 gallons, minimum) capable of closing BOP in 30 seconds or less and, holding them closed against full rated working pressure.
3. BOP controls, to be located near drillers' position.
4. Kelly equipped with Kelly cock
5. Inside blowout preventer or its equivalent on derrick floor at all times with proper threads to fit pipe being used.
6. Kelly saver-sub equipped with rubber casing protector at all times
7. Plug type blowout preventer tester
8. Extra set pipe rams to fit drill pipe in use on location at all times.
9. Type RX ring gaskets in place of Type R.

**MEC TO FURNISH:**

- 1 Bradenhead or casing head and side valves
- 2 Wear bushing. If required.

**GENERAL NOTES:**

- 1 Deviations from this drawing may, be made only with the express permission of MEC's Drilling Manager.
2. All connections, valves, fittings, piping, etc., subject to well or pump pressure must be flanged (suitable clamp connections acceptable) and have minimum working pressure equal to rated working pressure of preventers up through choke valves must be full opening and suitable for high pressure mud service.
3. Controls to be of standard design and each marked, showing opening and closing position
- 4 Chokes will be positioned so as not to hamper or delay changing of choke beans

- Replaceable parts for adjustable choke, or bean sizes, retainers, and choke wrenches to be conveniently located for immediate use.
- 5 All valves to be equipped with hand-wheels or handles ready for immediate use.
  6. Choke lines must be suitably anchored
  7. Handwheels and extensions to be connected and ready for use.
  - 8 Valves adjacent to drilling spool to be kept open Use outside valves except for emergency.
  9. All seamless steel control piping (2000 psi working pressure) to have flexible joints to avoid stress. Hoses will be permitted.
  - 10 Casinghead connections shall not be used except in case of emergency.
  11. Does not use kill line for routine fill up operations.

# Mack Energy Corporation

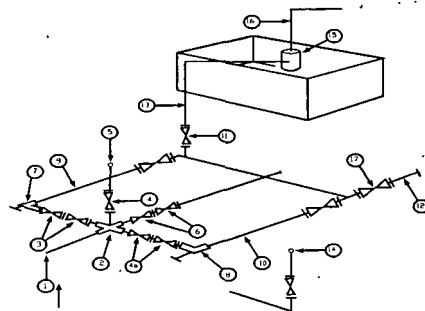
Exhibit #2

## MINIMUM CHOKE MANIFOLD

3,000, 5,000, and 10,000 PSI Working Pressure

3M will be used

3 MWP - 5 MWP - 10 MWP



Mud Pit

Reserve Pit

\* Location of separator optional

Below Substructure

### Minimum requirements

3,000 MWP

5,000 MWP

10,000 MWP

No.		I.D.	Nominal	Rating	I.D.	Nominal	Rating	I.D.	Nominal	Rating
1	Line from drilling Spool		3"	3,000		3"	5,000		3"	10,000
2	Cross 3" x 3" x 3" x 2"			3,000			5,000			
2	Cross 3" x 3" x 3" x 2"									10,000
3	Valve Gate Plug	3 1/8		3,000	3 1/8		5,000	3 1/8		10,000
4	Valve Gate Plug	1 13/16		3,000	1 13/16		5,000	1 13/16		10,000
4a	Valves (1)	2 1/16		3,000	2 1/16		5,000	2 1/16		10,000
5	Pressure Gauge			3,000			5,000			10,000
6	Valve Gate Plug	3 1/8		3,000	3 1/8		5,000	3 1/8		10,000
7	Adjustable Choke (3)	2"		3,000	2"		5,000	2"		10,000
8	Adjustable Choke	1"		3,000	1"		5,000	2"		10,000
9	Line		3"	3,000		3"	5,000		3"	10,000
10	Line		2"	3,000		2"	5,000		2"	10,000
11	Valve Gate Plug	3 1/8		3,000	3 1/8		5,000	3 1/8		10,000
12	Line		3"	1,000		3"	1,000		3"	2,000
13	Line		3"	1,000		3"	1,000		3"	2,000
14	Remote reading compound Standpipe pressure gauge			3,000			5,000			10,000
15	Gas Separator		2' x 5'			2' x 5'			2' x 5'	
16	Line		4"	1,000		4"	1,000		4"	2,000
17	Valve Gate Plug	3 1/8		3,000	3 1/8		5,000	3 1/8		10,000

(1) Only one required in Class 3M

(2) Gate valves only shall be used for Class 10 M

(3) Remote operated hydraulic choke required on 5,000 psi and 10,000 psi for drilling.

### EQUIPMENT SPECIFICATIONS AND INSTALLATION INSTRUCTION

- All connections in choke manifold shall be welded, studded, flanged or Cameron clamp of comparable rating.
- All flanges shall be API 6B or 6BX and ring gaskets shall be API RX or BX. Use only BX for 10MWP.
- All lines shall be securely anchored.
- Chokes shall be equipped with tungsten carbide seats and needles, and replacements shall be available.
- alternate with automatic chokes, a choke manifold pressure gauge shall be located on the rig floor in conjunction with the standpipe pressure gauge.
- Line from drilling spool to choke manifold should be as straight as possible. Lines downstream from chokes shall make turns by large bends or 90 degree bends using bull plugged tees