

RECEIVED

OCD Artesia

APR 12 2012

12-299

FORM APPROVED
OMB No. 1004-0136
Expires July 31, 2010

EC

UNITED STATES
DEPARTMENT OF THE INTERIOR
BUREAU OF LAND MANAGEMENT

MOCO ARTESIA

APPLICATION FOR PERMIT TO DRILL OR REENTER

1a. Type of Work ☒ DRILL ☐ REENTER

CONFIDENTIAL

1b. Type of Well ☒ Oil Well ☐ Gas Well ☐ Other ☐ Single Zone ☒ Multiple Zone2. Name of Operator
CHESAPEAKE AGENT FOR BOPCO

Contact: LYNDEE SONGER

Email: lyndee.songer@chk.com

3a. Address
PO BOX 18496
OKLAHOMA CITY, OK 73154-04963b. Phone No. (include area code)
Ph: 405-935-2411

4. Location of Well (Report location clearly and in accordance with any State requirements.)

At surface NENW 150FNL 1980FWL

At proposed prod. zone SWSW 100FSL 1980FWL

NORTH DOK
LOCATION14. Distance in miles and direction from nearest town or post office*
30 MILES SE OF LOVING, NM15. Distance from proposed location to nearest property or
lease line, ft (Also to nearest drig. unit line, if any)
150' FNL

16. No. of Acres in Lease

~~2620.00~~ 2054.6818. Distance from proposed location to nearest well, drilling,
completed, applied for, on this lease, ft.
582' NE OF POGO PATTON 18 FEDERAL #6

19. Proposed Depth

14007 MD
9403 TVD

Alt. 9700'

21. Elevations (Show whether DF, KB, RT, GL, etc.)
3495 GL22. Approximate date work will start
06/23/20125. Lease Serial No.
54 NMNM025533 01-LC061705-B

6. If Indian, Allottee or Tribe Name

7. If Unit or CA Agreement, Name and No.
NMNM071016X8. Lease Name and Well No.
PLU BIG SINKS 19-24-31 USA 1H9. API Well No.
30-015-4018110. Field and Pool, or Exploratory
WILDCAT; BONE SPRING

11. Sec., T., R., M., or Blk. and Survey or Area

Sec 19 T24S R31E Mer NMP

12. County or Parish
EDDY13. State
NM17. Spacing Unit dedicated to this well
160.00

20. BLM/BIA Bond No. on file

ESB000159

23. Estimated duration
30

24. Attachments

The following, completed in accordance with the requirements of Onshore Oil and Gas Order No. 1, shall be attached to this form.

1. Well plat certified by a registered surveyor.
2. A Drilling Plan.
3. A Surface Use Plan (if the location is on National Forest System Lands, the SUPO shall be filed with the appropriate Forest Service Office)

4. Bond to cover the operations unless covered by an existing bond on file (see Item 20 above).
5. Operator certification
6. Such other site specific information and/or plans as may be required by the authorized officer

25. Signature
(Electronic Submission)Name (Printed/Typed)
LYNDEE SONGER Ph: 405-935-2411Date
02/08/2012Title
REGULATORY COMPLIANCE ANALYST

Approved by (Signature) James A. Ames

Name (Printed/Typed)

Date
APR 10 2012Title
FIELD MANAGEROffice
CARLSBAD FIELD OFFICEApplication approval does not warrant or certify the applicant holds legal or equitable title to those rights in the subject lease which would entitle the applicant to conduct operations thereon
Conditions of approval, if any, are attached.

Title 18 U.S.C. Section 1001 and Title 43 U.S.C. Section 1212, make it a crime for any person knowingly and willfully to make to any department or agency of the United States any false, fictitious or fraudulent statements or representations as to any matter within its jurisdiction.

APPROVAL FOR TWO YEARS

Additional Operator Remarks (see next page)

Carlsbad Controlled Water Basin

Electronic Submission #130402 verified by the BLM Well Information System
For CHESAPEAKE AGENT FOR BOPCO, sent to the Carlsbad
Committed to AFMSS for processing by JAMES (JIM) HUGHES on 02/08/2012 ()ATTACHED FOR
CONDITIONS OF APPROVALApproval Subject to General Requirements
& Special Stipulations Attached

** OPERATOR-SUBMITTED ** OPERATOR-SUBMITTED ** OPERATOR-SUBMITTED **

ONSHORE ORDER NO. 1
Chesapeake Agent for BOPCO
PLU Big Sinks 19-24-31 USA 1H
Eddy County, NM

CONFIDENTIAL – TIGHT HOLE
OPERATOR CERTIFICATION

CERTIFICATION

I hereby certify that I, or someone under my direct supervision, have inspected the drill site and access route proposed herein; that I am familiar with the conditions which currently exist; that I have full knowledge of state and Federal laws applicable to this operation; that the statements made in this APD package are, to the best of my knowledge, true and correct; and, that the work associated with the operations proposed will be performed in conformity with this APD package and the terms and conditions under which it is approved. I also certify that I, or the company I represent, am responsible for the operations conducted under this application. These statements are subject to the provisions of 18 U.S.C. 1001 for the filing of a false statement.

Executed this 13th day of JANUARY, 2011

Name: Toby Reid
Toby Reid - Field Superintendent

Address: 1616 W Bender Blvd Hobbs, NM 88240

Telephone: 575-725-8497

E-mail: toby.reid@chk.com

Additional Operator Remarks:

~~LATERAL LEASE NMNM002860 1730.31 ACRES~~
BOTTOM HOLE LEASE NMLC061705B- 324.37 ACRES

Chesapeake Operating, Inc. respectfully requests permission to drill a well to 14,008 to test the Bone Spring formation. If productive, casing will be run and the well completed. If dry, the well will be plugged and abandoned as per BLM and New Mexico Oil Conservation Division requirements.

Please find the Surface Use Plan and Drilling Plan as required by Onshore Order No. 1.

Attached are the Exhibit A-1 to A-4 Survey plats, Exhibit B 1 mile radius plat, Exhibit C Production facility, Exhibit D Patterson Rig #62 layout, Exhibit E- Fresh Water Line, Exhibit F-1 to F-2 BOP & Choke Manifold and Exhibit G Directional Drill Plan.

Archeological Survey will be delivered to the BLM when completed.

Chesapeake Operating, Inc. has an agreement with the grazing lessee.

Please be advised that Chesapeake Operating, Inc. is the Designated Agent for BOPCO, the Operator of this unit. Chesapeake Operating, Inc. agrees to be responsible under the terms and conditions of the lease for the operations conducted upon the lease lands.

(CHK PN 643074)

DISTRICT I
1025 N. French Dr., Hobbs, NM 88240

DISTRICT II
1301 W. Grand Avenue, Artesia, NM 88210

DISTRICT III
1000 Rio Brazos Rd., Aztec, NM 87410

DISTRICT IV
1220 S. St. Francis Dr., Santa Fe, NM 87505

State of New Mexico
Energy, Minerals and Natural Resources Department

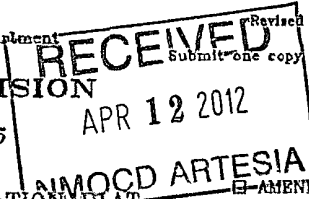
OIL CONSERVATION DIVISION

1220 South St. Francis Dr.
Santa Fe, New Mexico 87505

Form C-102

Revised July 18, 2010

Submit one copy to appropriate District Office



WELL LOCATION AND ACREAGE DEDICATION PLAT

AMENDED REPORT

API Number 30-015-40181	Pool Code (96403)	Pool Name WILDCAT; BONE SPRING
Property Code 39169	Property Name PLU BIG SINKS 19 24 31 USA	Well Number 1H
OGRIID No. 147179	Operator Name CHESAPEAKE OPERATING CO.	Elevation 3495'

Surface Location

UL or lot No.	Section	Township	Range	Lot Idn	Feet from the	North/South line	Feet from the	East/West line	County
C	19	24 S	31 E		150	NORTH	1980	WEST	EDDY

Bottom Hole Location If Different From Surface

UL or lot No.	Section	Township	Range	Lot Idn	Feet from the	North/South line	Feet from the	East/West line	County
N	19	24 S	31 E		100	SOUTH	1980	WEST	EDDY

Dedicated Acres	Joint or Infill	Consolidation Code	Order No.
462.38	160.00		

NO ALLOWABLE WILL BE ASSIGNED TO THIS COMPLETION UNTIL ALL INTERESTS HAVE BEEN CONSOLIDATED
OR A NON-STANDARD UNIT HAS BEEN APPROVED BY THE DIVISION

	<p>SURFACE LOCATION Lat - N 32.20965491' Long - W 103.81928184' NMSPCE - N 440386.717 E 700324.593 (NAD-83) Lat - N 32.20953150' Long - W 103.81879807' NMSPCE - N 440327.921 E 659140.344 (NAD-27)</p>	<p>OPERATOR CERTIFICATION I hereby certify that the information contained herein is true and complete to the best of my knowledge and belief, and that this organization either owns a working interest or unleased mineral interest in the land including the proposed bottom hole location or has a right to drill this well at this location pursuant to a contract with an owner of such a mineral or working interest, or to a voluntary pooling agreement or a compulsory pooling order heretofore entered by the division. <i>Bryan Arrant</i> 02/03/2012 Signature Date Bryan Arrant Printed Name bryan.arrant@chk.com Email Address</p>
	<p>PROPOSED BOTTOM HOLE LOCATION Lat - N 32.19581043' Long - W 103.81929030' NMSPCE - N 435350.274 E 700346.057 (NAD-83) Lat - N 32.19568688' Long - W 103.81880716' NMSPCE - N 435291.591 E 659161.635 (NAD-27)</p>	<p>SURVEYOR CERTIFICATION I hereby certify that the well location shown on this plat was plotted from field notes of actual surveys made by me or under my supervision and that the same is true and correct to the best of my belief. Date Surveyed DECEMBER 2011 Signature of Professional Surveyor Certificate No. 7977 BASIN SURVEYS 25834</p>

Terminus

EXHIBIT A-1

Eddy, NM

DRILLING PLAN
PAGE 1

OHSORE OIL & GAS ORDER NO. 1
Approval of Operations on Onshore
Federal and Indian Oil and Gas Leases

All lease and/or unit operations are to be conducted in such a manner that full compliance is made with the applicable laws, regulations (CFR 43, Part 3160) and the approved Application for Permit to Drill. The operator is considered fully responsible for the actions of his subcontractors. A copy of the approved APD must be on location during construction, drilling and completion operations

Approval of this application does not warrant or certify that the applicant holds legal or equitable title to those rights in the subject lease, which would entitle the applicant to conduct operations thereon.

1. **FORMATION TOPS**

The estimated tops of important geologic markers are as follows.

FORMATION	SUB-SEA	KBTVD	MD
Rustler	2976	544	
Top of Salt	2702	818	
Base of Salt	-477	3997	
Lamar	-700	4220	
Bell Canyon	-720	4240	
Cherry Canyon	-1636	5156	
Brushy Canyon	-2902	6422	
Bone Spring	-4580	8100	
Pilot Hole	-6180	9700	
Lateral TD	-5883	9403	14008

2. **ESTIMATED DEPTH OF WATER, OIL, GAS & OTHER MINERAL BEARING FORMATIONS**

The estimated depths at which the top and bottom of the anticipated water, oil, gas, or other mineral bearing formations are expected to be encountered are as follows.

Substance	Formation	Depth
Water	Rustler	544
Oil/Gas	Brushy Canyon	6422
Oil/Gas	Bone Spring	8100

All shows of fresh water and minerals will be reported and protected.

Eddy, NM

DRILLING PLAN
PAGE 2

3. BOP EQUIPMENT

Will have a 5000 psi rig stack (see proposed schematic) for drill out below surface casing. Stack will be tested as specified below. Surface casing and Intermediate Casing shoes will be tested to 10.5 ppg equivalent after drilling out 10' of new formation

Chesapeake Operating Inc.'s minimum specifications for pressure control equipment are as follows:

I. BOP, Annular, Choke Manifold Pressure Test - See Exhibit F-1 and F-2

A. Equipment

1. The equipment to be tested includes all of the following that is installed on the well:
 - (a) Ram-type and annular preventers
 - (b) Choke manifolds and valves
 - (c) Kill lines and valves
 - (d) Upper and lower kelly cock valves, inside BOP's and safety valves

B. Frequency

1. All tests shall be performed with clear water
 - (a) when installed
 - (b) before drilling out each casing string
 - (c) at any time that there is a repair requiring a pressure seal to be broken in the assembly
 - (d) at least once every 30 days while drilling

C. Frequency

1. In some drilling operations, the pressures to be used for low and high pressure testing of preventers and casing may be different from those given below due to governmental regulations or approved local practices.
2. If an individual component does not test at the low pressure, do not test to the high pressure and then drop back down to the low pressure.
3. All valves located downstream of a valve being tested must be placed in the open position
4. All equipment will be tested with an initial "low pressure" test at 250 psi.
5. The subsequent "high pressure" test will be conducted at the rated working pressure of the equipment for all equipment except the annular preventer.
6. The "high pressure" test for the annular preventer will be conducted at 70% of the rated working pressure
7. A record of all pressures will be made on a pressure-recording chart

II. Accumulator Performance Test

A. Scope

1. The purpose of this test is to check the capabilities of the Bop control systems and to detect deficiencies in the hydraulic oil volume and recharge time.

B. Test Frequency

1. The accumulator is to be tested each time the BO's are tested, or any time a major repair is performed.

Eddy, NM

DRILLING PLAN
PAGE. 3

C. Minimum Requirements

1. The accumulator should be of sufficient volume to supply 1.5 times the volume to close and hold all BOP equipment in sequence, without recharging and the pump turned off, and have remaining pressures of 200 psi above the precharge pressure.
2. Minimum precharge pressures for the various accumulator systems per manufacturers recommended specifications are as follows:

System Operating Pressure	Precharge Pressure
1500 psi	750 psi
2000 psi	1000 psi
3000 psi	1000 psi

3. Closing times for the annular preventer should be less than 20 seconds and for the ram-type preventers less than 10 seconds.
4. System recharge time should not exceed 10 minutes.

D. Test Procedure

1. Shut accumulator pumps off and record accumulator pressure
2. In sequence, close the annular and one set of properly sized pipe rams, and open the HCR valve
3. Record time to close or open each element and the remaining accumulator pressure after each operation.
4. Record the remaining accumulator pressure at the end of the test sequence. Per the previous requirement, this pressure should not be less than the following pressures.

System Operating Pressure	Remaining Pressure After Test
1500 psi	950 psi
2000 psi	1200 psi
3000 psi	1200 psi

5. Turn the accumulator pumps on and record the recharge time. This time should not exceed 10 minutes.
6. Open annular and ram-type preventers. Close HCR valve.
7. Place all 4-way control valves in full open or full closed position. Do not leave in neutral position.

3 CASING PROGRAM

- a. The proposed casing program will be as follows.

Purpose	From	To	Hole Size	Csg Size	Weight	Grade	Thread	Condition
Surface	0'	650'	17-1/2"	13-3/8"	48 #	H-40	STC	New
Shallow Intermediate	0'	4100'	11"	8-5/8"	32 #	J-55	LTC	New
Production	0'	14,008'	7-7/8"	5-1/2"	20.0 #	L-80	LTC	New

- b. Casing design subject to revision based on geologic conditions encountered.

see 10A

Eddy, NM

DRILLING PLAN
PAGE 4

c. Casing Safety Factors

Casing String	Min SF Burst	Min SF Collapse	Min SF Tension
Surface	1.41	2.62	2.53
Shallow Intermediate	1.41	1.43	1.97
Production	1.21	2.06	1.59

Min SF is the smallest of a group of safety factors that include the following considerations:

	Surf	Int	Prod
Burst Design			
Pressure Test- Surface, Int, Prod Csg P external: Water P internal: Test psi + next section heaviest mud in csg	X	X	X
Displace to Gas- Surf Csg P external: Water P internal: Dry Gas from Next Csg Point	X		
Frac at Shoe, Gas to Surf- Int Csg P external: Water P internal: Dry Gas, 15 ppg Frac Gradient		X	
Stimulation (Frac) Pressures- Prod Csg P external: Water P internal: Max inj pressure w/ heaviest injected fluid			X
Tubing leak- Prod Csg (packer at KOP) P external: Water P internal: Leak just below surf, 8.7 ppg packer fluid			X
Collapse Design			
Full Evacuation P external: Water gradient in cement, mud above TOC P internal: none	X	X	X
Cementing- Surf, Int, Prod Csg P external: Wet cement P internal: water	X	X	X
Tension Design			
100k lb overpull	X	X	X

Eddy, NM

DRILLING PLAN
PAGE: 5

5. CEMENTING PROGRAM

Slurry	Type	Top	Btm	Wt	Yld	%Exc	Sx
Surface				(ppg)	(sx/cu ft)	Open Hole	
Single Slurry	C + 4% Gel	0'	650'	13.5	1.73	200	758
Shallow Int							
Lead	TXI + 5% Salt	0'	3,600'	12	1.99	200	1280
Tail	50C/50Poz +5% Salt	3,600'	4,100'	14.2	1.37	200	290
Production							
1st Stage lead	35/65Poz H +8% Gel	5,050'	8,950'	12.4	2.11	75	560
1st Stage Tail	50/50Poz H +2% Gel	8,950'	14,008'	14.5	1.27	75	1216
	35/65Poz C +6% Gel						
2nd Stage Lead	+ 5% Salt	3,600'	4,800'	12.4	2.19	200	207
2nd Stage Tail	C	4,800'	5,050'	14.8	1.33	200	98

1. Final cement volumes will be determined by caliper.
2. Surface casing shall have at least one centralizer installed on each of the bottom three joints starting with the shoe joint.
3. The production casing will be cemented in two stages with the DV tool place at: 5,050'
4. Production casing will have one centralizer on every other joint from TD to KOP (horizontal type) and from KOP to intermediate casing (bowspring type).

Pilot Hole Plugging Plan:

Pilot hole will be plugged back from TD of 9,700' TVD to KOP of 8,948' TVD with a single balanced plug using tubing that will be cemented in place on the bottom of the Smith Trackmaster OH-Openhole whipstock cementing system (previously approved by BLM). This will be accomplished using 360 sx (40% excess) of 17.0 ppg 0.99 cuft/sk yield Class H cement.

Eddy, NM

DRILLING PLAN
PAGE: 6

6. MUD PROGRAM

From	To	Type	Weight	F. Vis	Filtrate
0'	650'	Spud Mud	8.4 - 8.7	32 - 34	NC - NC
650'	4,100'	Brine	9.5 - 10.1	28 - 29	NC - NC
4,100'	8,948'	Cut Brine	8.3 - 8.8	28 - 29	NC - NC
8,948'	9,700'	Cut Brine	8.3 - 8.8	28 - 29	NC - NC
8,948'	9,701'	Cut Brine	8.3 - 8.8	28 - 29	NC - NC
9,701'	14,008'	Cut Brine	8.3 - 8.8	28 - 29	NC - NC

A closed system will be utilized consisting of above ground steel tanks. All wastes accumulated during drilling operations will be contained in a portable trash cage and removed from location and deposited

All fluids and cuttings will be disposed of in accordance with New Mexico Oil Conservation Division rules and regulations.

A mud test shall be performed every 24 hours after mudding up to determine, as applicable: density, viscosity, gel strength, filtration, and pH.

7. TESTING, LOGGING, AND CORING

The anticipated type and amount of testing, logging, and coring are as follows:

- Drill stem tests are not planned
- The logging program will be as follows:

TYPE	Logs	Interval	Timing	Vendor
Mud Log	2 man Mudlog	Int Cas to TD	Int Csg Drill out	Suttles
OH	Triple Combo	Curve to Int Csg	After Curve	TBD
OH	GR/Neutron	Int Cas to Surf	After Curve	TBD
LWD	MWD Gamma	Curve and Lateral	While Drilling	Ryan

- Core samples are not planned.
- A Directional Survey will be run

8. ABNORMAL PRESSURES AND HYDROGEN SULFIDE

- No abnormal pressures or temperatures are expected. Estimated BHP is: 4540 psi
- Hydrogen sulfide gas is not anticipated.

Permian District

Poker Lake

PLU Big Sinks 19-24-31USA 1H

Well #1

Wellbore #1

Plan: Plat

Standard Planning Report

02 February, 2012

ENC 6

Chesapeake Operating

Planning Report

Database:	Drilling Database	Local Co-ordinate Reference:	Well Well #1
Company:	Permian District	TVD Reference:	WELL @ 0.0usft (Original Well Elev)
Project:	Poker Lake	MD Reference:	WELL @ 0.0usft (Original Well Elev)
Site:	PLU Big Sinks 19-24-31 USA 1H	North Reference:	Grid
Well:	Well #1	Survey Calculation Method:	Minimum Curvature
Wellbore:	Wellbore #1		
Design:	Plat		

Project	Poker Lake, Eddy County, NM		
Map System:	US State Plane 1983	System Datum:	Ground Level
Geo Datum:	North American Datum 1983		
Map Zone:	New Mexico Eastern Zone		

Site	PLU Big Sinks 19-24-31 USA 1H		
Site Position:		Northing:	440,387.00 usft
From:	Map	Easting:	700,325.00 usft
Position Uncertainty:	0.0 usft	Slot Radius:	13.200 in
		Latitude:	32.209656
		Longitude:	-103.819281
		Grid Convergence:	0.27 °

Well	Well #1		
Well Position	+N-S	0.0 usft	Northing: 440,387.00 usft
	+E-W	0.0 usft	Easting: 700,325.00 usft
Position Uncertainty	0.0 usft	Wellhead Elevation:	Ground Level: 0.0 usft

Wellbore	Wellbore #1		
Magnetics	Model Name	Sample Date	Declination
	IGRF200510	1/13/2012	7.62
			Dip Angle
			60.14
			Field Strength
			48.563

Design	Plat		
Audit Notes:			
Version:	Phase:	PROTOTYPE	Tie On Depth: 0.0

Vertical Section:	Depth From (TVD)	+N/S	+E/W	Direction
	(usft)	(usft)	(usft)	(°)
	0.0	0.0	0.0	179.76

Plan Sections										
Measured Depth (usft)	Inclination (°)	Azimuth (°)	Vertical Depth (usft)	+N/S (usft)	+E/W (usft)	Dogleg Rate (°/100usft)	Build Rate (°/100usft)	Turn Rate (°/100usft)	TEO (°)	Target
0.0	0.00	0.00	0.0	0.0	0.0	0.00	0.00	0.00	0.00	
8,948.1	0.00	0.00	8,948.1	0.0	0.0	0.00	0.00	0.00	0.00	
9,700.6	90.30	179.76	9,425.6	-480.0	2.0	12.00	12.00	0.00	179.76	
14,007.7	90.30	179.76	9,403.0	-4,787.0	20.0	0.00	0.00	0.00	0.00	BS 19-24-31 USA 1

Chesapeake Operating Planning Report

Database:	Drilling Database	Local Co-ordinate Reference:	Well Well #1
Company:	Permian District	TVD Reference:	WELL @ 0.0usft (Original Well Elev)
Project:	Poker Lake	MD Reference:	WELL @ 0.0usft (Original Well Elev)
Site:	PLU Big Sinks 19-24-31 USA 1H	North Reference:	Grid
Well:	Well #1	Survey Calculation Method:	Minimum Curvature
Wellbore:	Wellbore #1		
Design:	Plat		

Planned Survey									
Measured Depth (usft)	Inclination (°)	Azimuth (°)	Vertical Depth (usft)	+N/-S (usft)	+E/-W (usft)	Vertical Section (usft)	Dogleg Rate (°/100usft)	Build Rate (°/100usft)	Turn Rate (°/100usft)
0.0	0.00	0.00	0.0	0.0	0.0	0.0	0.00	0.00	0.00
100.0	0.00	0.00	100.0	0.0	0.0	0.0	0.00	0.00	0.00
200.0	0.00	0.00	200.0	0.0	0.0	0.0	0.00	0.00	0.00
300.0	0.00	0.00	300.0	0.0	0.0	0.0	0.00	0.00	0.00
400.0	0.00	0.00	400.0	0.0	0.0	0.0	0.00	0.00	0.00
500.0	0.00	0.00	500.0	0.0	0.0	0.0	0.00	0.00	0.00
600.0	0.00	0.00	600.0	0.0	0.0	0.0	0.00	0.00	0.00
700.0	0.00	0.00	700.0	0.0	0.0	0.0	0.00	0.00	0.00
800.0	0.00	0.00	800.0	0.0	0.0	0.0	0.00	0.00	0.00
900.0	0.00	0.00	900.0	0.0	0.0	0.0	0.00	0.00	0.00
1,000.0	0.00	0.00	1,000.0	0.0	0.0	0.0	0.00	0.00	0.00
1,100.0	0.00	0.00	1,100.0	0.0	0.0	0.0	0.00	0.00	0.00
1,200.0	0.00	0.00	1,200.0	0.0	0.0	0.0	0.00	0.00	0.00
1,300.0	0.00	0.00	1,300.0	0.0	0.0	0.0	0.00	0.00	0.00
1,400.0	0.00	0.00	1,400.0	0.0	0.0	0.0	0.00	0.00	0.00
1,500.0	0.00	0.00	1,500.0	0.0	0.0	0.0	0.00	0.00	0.00
1,600.0	0.00	0.00	1,600.0	0.0	0.0	0.0	0.00	0.00	0.00
1,700.0	0.00	0.00	1,700.0	0.0	0.0	0.0	0.00	0.00	0.00
1,800.0	0.00	0.00	1,800.0	0.0	0.0	0.0	0.00	0.00	0.00
1,900.0	0.00	0.00	1,900.0	0.0	0.0	0.0	0.00	0.00	0.00
2,000.0	0.00	0.00	2,000.0	0.0	0.0	0.0	0.00	0.00	0.00
2,100.0	0.00	0.00	2,100.0	0.0	0.0	0.0	0.00	0.00	0.00
2,200.0	0.00	0.00	2,200.0	0.0	0.0	0.0	0.00	0.00	0.00
2,300.0	0.00	0.00	2,300.0	0.0	0.0	0.0	0.00	0.00	0.00
2,400.0	0.00	0.00	2,400.0	0.0	0.0	0.0	0.00	0.00	0.00
2,500.0	0.00	0.00	2,500.0	0.0	0.0	0.0	0.00	0.00	0.00
2,600.0	0.00	0.00	2,600.0	0.0	0.0	0.0	0.00	0.00	0.00
2,700.0	0.00	0.00	2,700.0	0.0	0.0	0.0	0.00	0.00	0.00
2,800.0	0.00	0.00	2,800.0	0.0	0.0	0.0	0.00	0.00	0.00
2,900.0	0.00	0.00	2,900.0	0.0	0.0	0.0	0.00	0.00	0.00
3,000.0	0.00	0.00	3,000.0	0.0	0.0	0.0	0.00	0.00	0.00
3,100.0	0.00	0.00	3,100.0	0.0	0.0	0.0	0.00	0.00	0.00
3,200.0	0.00	0.00	3,200.0	0.0	0.0	0.0	0.00	0.00	0.00
3,300.0	0.00	0.00	3,300.0	0.0	0.0	0.0	0.00	0.00	0.00
3,400.0	0.00	0.00	3,400.0	0.0	0.0	0.0	0.00	0.00	0.00
3,500.0	0.00	0.00	3,500.0	0.0	0.0	0.0	0.00	0.00	0.00
3,600.0	0.00	0.00	3,600.0	0.0	0.0	0.0	0.00	0.00	0.00
3,700.0	0.00	0.00	3,700.0	0.0	0.0	0.0	0.00	0.00	0.00
3,800.0	0.00	0.00	3,800.0	0.0	0.0	0.0	0.00	0.00	0.00
3,900.0	0.00	0.00	3,900.0	0.0	0.0	0.0	0.00	0.00	0.00
4,000.0	0.00	0.00	4,000.0	0.0	0.0	0.0	0.00	0.00	0.00
4,100.0	0.00	0.00	4,100.0	0.0	0.0	0.0	0.00	0.00	0.00
4,200.0	0.00	0.00	4,200.0	0.0	0.0	0.0	0.00	0.00	0.00
4,300.0	0.00	0.00	4,300.0	0.0	0.0	0.0	0.00	0.00	0.00
4,400.0	0.00	0.00	4,400.0	0.0	0.0	0.0	0.00	0.00	0.00
4,500.0	0.00	0.00	4,500.0	0.0	0.0	0.0	0.00	0.00	0.00
4,600.0	0.00	0.00	4,600.0	0.0	0.0	0.0	0.00	0.00	0.00
4,700.0	0.00	0.00	4,700.0	0.0	0.0	0.0	0.00	0.00	0.00
4,800.0	0.00	0.00	4,800.0	0.0	0.0	0.0	0.00	0.00	0.00
4,900.0	0.00	0.00	4,900.0	0.0	0.0	0.0	0.00	0.00	0.00
5,000.0	0.00	0.00	5,000.0	0.0	0.0	0.0	0.00	0.00	0.00
5,100.0	0.00	0.00	5,100.0	0.0	0.0	0.0	0.00	0.00	0.00
5,200.0	0.00	0.00	5,200.0	0.0	0.0	0.0	0.00	0.00	0.00
5,300.0	0.00	0.00	5,300.0	0.0	0.0	0.0	0.00	0.00	0.00

Chesapeake Operating

Planning Report

Database:	Drilling Database	Local Co-ordinate Reference:	Well Well #1
Company:	Permian District	TVD Reference:	WELL @ 0.0usft (Original Well Elev)
Project:	Poker Lake	MD Reference:	WELL @ 0.0usft (Original Well Elev)
Site:	PLU Big Sinks 19-24-31 USA 1H	North Reference:	Grid
Well:	Well #1	Survey Calculation Method:	Minimum Curvature
Wellbore:	Wellbore #1		
Design:	Plat		

Planned Survey									
Measured Depth (usft)	Inclination (°)	Azimuth (°)	Vertical Depth (usft)	+N/-S (usft)	+E/-W (usft)	Vertical Section (usft)	Dogleg Rate (°/100usft)	Build Rate (°/100usft)	Turn Rate (°/100usft)
5,400.0	0.00	0.00	5,400.0	0.0	0.0	0.0	0.00	0.00	0.00
5,500.0	0.00	0.00	5,500.0	0.0	0.0	0.0	0.00	0.00	0.00
5,600.0	0.00	0.00	5,600.0	0.0	0.0	0.0	0.00	0.00	0.00
5,700.0	0.00	0.00	5,700.0	0.0	0.0	0.0	0.00	0.00	0.00
5,800.0	0.00	0.00	5,800.0	0.0	0.0	0.0	0.00	0.00	0.00
5,900.0	0.00	0.00	5,900.0	0.0	0.0	0.0	0.00	0.00	0.00
6,000.0	0.00	0.00	6,000.0	0.0	0.0	0.0	0.00	0.00	0.00
6,100.0	0.00	0.00	6,100.0	0.0	0.0	0.0	0.00	0.00	0.00
6,200.0	0.00	0.00	6,200.0	0.0	0.0	0.0	0.00	0.00	0.00
6,300.0	0.00	0.00	6,300.0	0.0	0.0	0.0	0.00	0.00	0.00
6,400.0	0.00	0.00	6,400.0	0.0	0.0	0.0	0.00	0.00	0.00
6,500.0	0.00	0.00	6,500.0	0.0	0.0	0.0	0.00	0.00	0.00
6,600.0	0.00	0.00	6,600.0	0.0	0.0	0.0	0.00	0.00	0.00
6,700.0	0.00	0.00	6,700.0	0.0	0.0	0.0	0.00	0.00	0.00
6,800.0	0.00	0.00	6,800.0	0.0	0.0	0.0	0.00	0.00	0.00
6,900.0	0.00	0.00	6,900.0	0.0	0.0	0.0	0.00	0.00	0.00
7,000.0	0.00	0.00	7,000.0	0.0	0.0	0.0	0.00	0.00	0.00
7,100.0	0.00	0.00	7,100.0	0.0	0.0	0.0	0.00	0.00	0.00
7,200.0	0.00	0.00	7,200.0	0.0	0.0	0.0	0.00	0.00	0.00
7,300.0	0.00	0.00	7,300.0	0.0	0.0	0.0	0.00	0.00	0.00
7,400.0	0.00	0.00	7,400.0	0.0	0.0	0.0	0.00	0.00	0.00
7,500.0	0.00	0.00	7,500.0	0.0	0.0	0.0	0.00	0.00	0.00
7,600.0	0.00	0.00	7,600.0	0.0	0.0	0.0	0.00	0.00	0.00
7,700.0	0.00	0.00	7,700.0	0.0	0.0	0.0	0.00	0.00	0.00
7,800.0	0.00	0.00	7,800.0	0.0	0.0	0.0	0.00	0.00	0.00
7,900.0	0.00	0.00	7,900.0	0.0	0.0	0.0	0.00	0.00	0.00
8,000.0	0.00	0.00	8,000.0	0.0	0.0	0.0	0.00	0.00	0.00
8,100.0	0.00	0.00	8,100.0	0.0	0.0	0.0	0.00	0.00	0.00
8,200.0	0.00	0.00	8,200.0	0.0	0.0	0.0	0.00	0.00	0.00
8,300.0	0.00	0.00	8,300.0	0.0	0.0	0.0	0.00	0.00	0.00
8,400.0	0.00	0.00	8,400.0	0.0	0.0	0.0	0.00	0.00	0.00
8,500.0	0.00	0.00	8,500.0	0.0	0.0	0.0	0.00	0.00	0.00
8,600.0	0.00	0.00	8,600.0	0.0	0.0	0.0	0.00	0.00	0.00
8,700.0	0.00	0.00	8,700.0	0.0	0.0	0.0	0.00	0.00	0.00
8,800.0	0.00	0.00	8,800.0	0.0	0.0	0.0	0.00	0.00	0.00
8,900.0	0.00	0.00	8,900.0	0.0	0.0	0.0	0.00	0.00	0.00
8,948.1	0.00	0.00	8,948.1	0.0	0.0	0.0	0.00	0.00	0.00
9,000.0	6.23	179.76	8,999.9	-2.8	0.0	2.8	12.00	12.00	0.00
9,100.0	18.23	179.76	9,097.5	-24.0	0.1	24.0	12.00	12.00	0.00
9,200.0	30.23	179.76	9,188.5	-64.9	0.3	64.9	12.00	12.00	0.00
9,300.0	42.23	179.76	9,269.0	-123.9	0.5	123.9	12.00	12.00	0.00
9,400.0	54.23	179.76	9,335.5	-198.4	0.8	198.4	12.00	12.00	0.00
9,500.0	66.23	179.76	9,385.1	-285.0	1.2	285.0	12.00	12.00	0.00
9,600.0	78.23	179.76	9,415.5	-380.1	1.6	380.1	12.00	12.00	0.00
9,700.0	90.23	179.76	9,425.6	-479.4	2.0	479.4	12.00	12.00	0.00
9,700.6	90.30	179.76	9,425.6	-480.0	2.0	480.0	12.00	12.00	0.00
9,800.0	90.30	179.76	9,425.0	-579.4	2.4	579.4	0.00	0.00	0.00
9,900.0	90.30	179.76	9,424.5	-679.4	2.8	679.4	0.00	0.00	0.00
10,000.0	90.30	179.76	9,424.0	-779.4	3.3	779.4	0.00	0.00	0.00
10,100.0	90.30	179.76	9,423.5	-879.4	3.7	879.4	0.00	0.00	0.00
10,200.0	90.30	179.76	9,422.9	-979.4	4.1	979.4	0.00	0.00	0.00
10,300.0	90.30	179.76	9,422.4	-1,079.4	4.5	1,079.4	0.00	0.00	0.00
10,400.0	90.30	179.76	9,421.9	-1,179.4	4.9	1,179.4	0.00	0.00	0.00
10,500.0	90.30	179.76	9,421.4	-1,279.3	5.3	1,279.4	0.00	0.00	0.00

Chesapeake Operating

Planning Report

Database:	Drilling Database	Local Co-ordinate Reference:	Well Well #1
Company:	Permian District	TVD Reference:	WELL @ 0.0usft (Original Well Elev)
Project:	Poker Lake	MD Reference:	WELL @ 0.0usft (Original Well Elev)
Site:	PLU Big Sinks 19-24-31 USA 1H	North Reference:	Grid
Well:	Well #1	Survey Calculation Method:	Minimum Curvature
Wellbore:	Wellbore #1		
Design:	Plat		

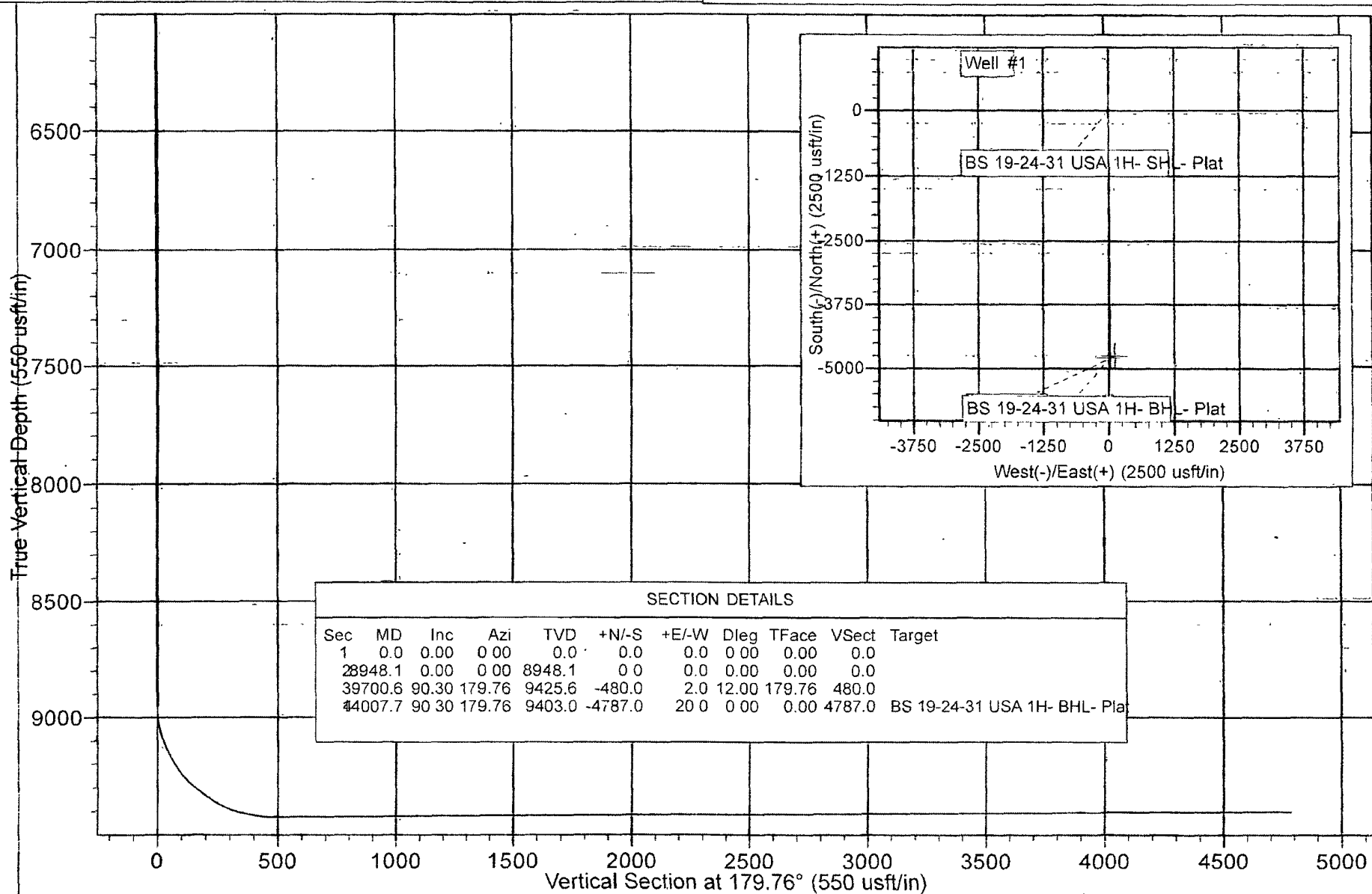
Planned Survey									
Measured Depth (usft)	Inclination (°)	Azimuth (°)	Vertical Depth (usft)	+N/-S (usft)	+E/-W (usft)	Vertical Section (usft)	Dogleg Rate (°/100usft)	Build Rate (°/100usft)	Turn Rate (°/100usft)
10,600.0	90.30	179.76	9,420.8	-1,379.3	5.8	1,379.4	0.00	0.00	0.00
10,700.0	90.30	179.76	9,420.3	-1,479.3	6.2	1,479.4	0.00	0.00	0.00
10,800.0	90.30	179.76	9,419.8	-1,579.3	6.6	1,579.4	0.00	0.00	0.00
10,900.0	90.30	179.76	9,419.3	-1,679.3	7.0	1,679.4	0.00	0.00	0.00
11,000.0	90.30	179.76	9,418.7	-1,779.3	7.4	1,779.4	0.00	0.00	0.00
11,100.0	90.30	179.76	9,418.2	-1,879.3	7.9	1,879.4	0.00	0.00	0.00
11,200.0	90.30	179.76	9,417.7	-1,979.3	8.3	1,979.4	0.00	0.00	0.00
11,300.0	90.30	179.76	9,417.2	-2,079.3	8.7	2,079.3	0.00	0.00	0.00
11,400.0	90.30	179.76	9,416.7	-2,179.3	9.1	2,179.3	0.00	0.00	0.00
11,500.0	90.30	179.76	9,416.1	-2,279.3	9.5	2,279.3	0.00	0.00	0.00
11,600.0	90.30	179.76	9,415.6	-2,379.3	9.9	2,379.3	0.00	0.00	0.00
11,700.0	90.30	179.76	9,415.1	-2,479.3	10.4	2,479.3	0.00	0.00	0.00
11,800.0	90.30	179.76	9,414.6	-2,579.3	10.8	2,579.3	0.00	0.00	0.00
11,900.0	90.30	179.76	9,414.0	-2,679.3	11.2	2,679.3	0.00	0.00	0.00
12,000.0	90.30	179.76	9,413.5	-2,779.3	11.6	2,779.3	0.00	0.00	0.00
12,100.0	90.30	179.76	9,413.0	-2,879.3	12.0	2,879.3	0.00	0.00	0.00
12,200.0	90.30	179.76	9,412.5	-2,979.3	12.4	2,979.3	0.00	0.00	0.00
12,300.0	90.30	179.76	9,411.9	-3,079.3	12.9	3,079.3	0.00	0.00	0.00
12,400.0	90.30	179.76	9,411.4	-3,179.3	13.3	3,179.3	0.00	0.00	0.00
12,500.0	90.30	179.76	9,410.9	-3,279.3	13.7	3,279.3	0.00	0.00	0.00
12,600.0	90.30	179.76	9,410.4	-3,379.3	14.1	3,379.3	0.00	0.00	0.00
12,700.0	90.30	179.76	9,409.8	-3,479.3	14.5	3,479.3	0.00	0.00	0.00
12,800.0	90.30	179.76	9,409.3	-3,579.3	15.0	3,579.3	0.00	0.00	0.00
12,900.0	90.30	179.76	9,408.8	-3,679.3	15.4	3,679.3	0.00	0.00	0.00
13,000.0	90.30	179.76	9,408.3	-3,779.3	15.8	3,779.3	0.00	0.00	0.00
13,100.0	90.30	179.76	9,407.8	-3,879.3	16.2	3,879.3	0.00	0.00	0.00
13,200.0	90.30	179.76	9,407.2	-3,979.3	16.6	3,979.3	0.00	0.00	0.00
13,300.0	90.30	179.76	9,406.7	-4,079.3	17.0	4,079.3	0.00	0.00	0.00
13,400.0	90.30	179.76	9,406.2	-4,179.3	17.5	4,179.3	0.00	0.00	0.00
13,500.0	90.30	179.76	9,405.7	-4,279.3	17.9	4,279.3	0.00	0.00	0.00
13,600.0	90.30	179.76	9,405.1	-4,379.3	18.3	4,379.3	0.00	0.00	0.00
13,700.0	90.30	179.76	9,404.6	-4,479.3	18.7	4,479.3	0.00	0.00	0.00
13,800.0	90.30	179.76	9,404.1	-4,579.3	19.1	4,579.3	0.00	0.00	0.00
13,900.0	90.30	179.76	9,403.6	-4,679.3	19.5	4,679.3	0.00	0.00	0.00
14,000.0	90.30	179.76	9,403.0	-4,779.3	20.0	4,779.3	0.00	0.00	0.00
14,007.7	90.30	179.76	9,403.0	-4,787.0	20.0	4,787.0	0.00	0.00	0.00

Design Targets									
Target Name	Dip Angle (°)	Dip Dir. (°)	TVD (usft)	+N/-S (usft)	+E/-W (usft)	Northing (usft)	Easting (usft)	Latitude	Longitude
BS 19-24-31 USA 1H- - hit/miss target - Shape	0.00	0.00	9,403.0	-4,787.0	20.0	435,600.00	700,345.00	32.196497	-103.819290
- plan hits target center - Point									
BS 19-24-31 USA 1H- - plan misses target center by 199.9usft at 9313.5usft MD (9278.9 TVD, -133.1 N, 0.6 E) - Point	0.00	0.00	9,428.0	0.0	0.0	440,387.00	700,325.00	32.209656	-103.819281

Project: Poker Lake
 Site: PLU Big Sinks 19-24-31 USA 1H
 Well: Well #1
 Wellbore: Wellbore #1
 Design: Plat

PROJECT DETAILS: Poker Lake

Geodetic System: US State Plane 1983
 Datum: North American Datum 1983
 Ellipsoid: GRS 1980
 Zone: New Mexico Eastern Zone

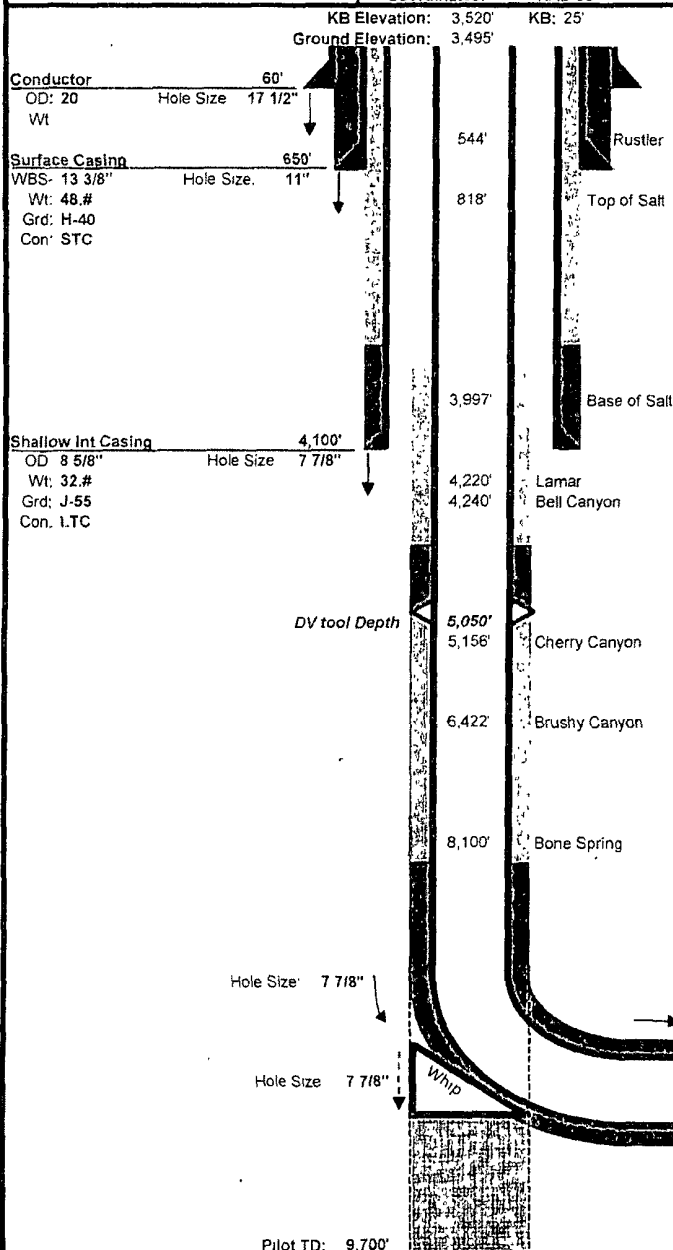




Drilling Engineer: Chris Gray
Superintendent: Daniel Gipson
Geologist: Chrs Persellin

Well Name: PLU Big Sinks 19-24-31 USA 1H
Target: First Bone Spring Shale
County, State: Eddy, NM
Surface Location: 150' FNL 1980' FWL, Section 19, Township 24S, Range 31 E
BH Location: 350' FSL 1980' FWL, Section 19, Township 24S, Range 31 E
SHL Latitude: 32 209655 SHL North: 440387
SHL Longitude: -103.819282 SHL East: 700325
BHL Latitude: 32.19649743 BHL North: 435600
BHL Longitude: -103.8192913 BHL East: 700345
Coordinates: NAD 83 Coordinates: NMSPCE

Drilling Rig: Patterson 62
Directional-Surface: Ryan
Directional-Curve: Ryan
Directional-Lateral: Ryan
Drilling Mud: Nova
Cement: Schlumberger
Wellhead: Sunbelt
Property Number: 643075
AFE Number: 161571



Wellhead Equipment	
A Section	13-3/8" x 13-5/8" 5K SOW (Multibow)
B Section	N/A (Multibow)
C Section	11" 5K X 7-1/16" 10K w/10k gate valve
D Section	N/A
Required BOP Stack	13-5/8" 5K- Double, Annular, Rot Head w/orbit valve

Mud				
Depth	Type	Weight	F. Vis	FL
0' - 650'	Spud Mud	8.4 - 8.7	32 - 34	NC - NC
650' - 4,100'	Brine	9.5 - 10.1	28 - 28	NC - NC
4,100' - 8,948'	Cut Brine	8.3 - 8.8	28 - 29	NC - NC
8,948' - 9,700'	Cut Brine	8.3 - 8.8	28 - 29	NC - NC
8,948' - 9,701'	Cut Brine	8.3 - 8.8	28 - 29	NC - NC
9,701' - 14,008'	Cut Brine	8.3 - 8.8	28 - 29	NC - NC

Cement							
Slurry	Top	Btm	Wt	Yld	%Exc	Bbl	Sx
Surface							
Single Slurry	0'	650'	13.5	1.73	200	234	758
Shallow Int							
Lead	0'	3,600'	12.0	1.99	200	454	1280
Tail	3,600'	4,100'	14.2	1.37	200	71	290
Production							
1st Lead	5,050'	8,950'	12.4	2.11	75	211	560
1st Tail	8,950'	14,008'	14.5	1.27	75	275	1216
2nd Lead	3,600'	4,800'	12.4	2.19	200	81	207
2nd Tail	4,800'	5,050'	14.8	1.33	200	23	98

Type	Logs	Interval	Vendor
Mud Log	2 man Mudlog	Int Cas to TD	Suttles
OH	Triple Combo	Curve to Int Csg	TBD
OH	GR/Neutron	Int Cas to Surf	TBD
LWD	MWD Gamma	Curve and Lateral	Ryan

Directional Plan						
Target Line:	9243' @ 0° VS w/89.5 deg inclination					
Target Window:	20' above, 20' below, 50' left, 50' right					
	MD	INC	AZM	TVD	VS	DLS
KOP	8,948'	0.00	0.00	8,948'	0	0.00
EOB	9,701'	90.30	179.76	9,426'	480	12.00
TD	14,008'	90.30	179.76	9,403'	4,787'	0.00
Hardlines:	Lateral- 330' from parallel lease lines.					
	Vertical- Actual Lease Lines					
Notes:	Please note SHL and BHL distance from lease lines					

Chesapeake Minimum BOPE Requirements

Wellname: PLU Big Sinks 19-24-31 USA 1H

Operation: Intermediate and Production Hole Sections

BLOWOUT PREVENTOR SCHEMATIC

CHESAPEAKE OPERATING INC

Permian District-Minimum Requirements

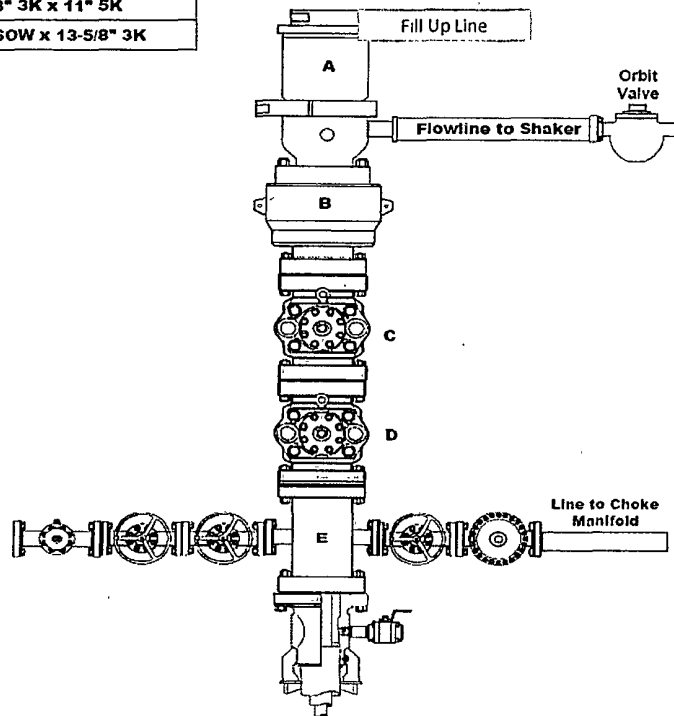
FIELD : Avalon

OPERATION: Intermediate and Production Hole Sections

SIZE PRESSURE DESCRIPTION		
A	500	Rotating Head
B	13 5/8" 5,000	Annular
C	13 5/8" 5,000	Pipe Ram
D	13 5/8" 5,000	Blind Ram
E	13 5/8" 5,000	Mud Cross
F		
DSA	As required for each hole size	
C-Sec		
B-Sec	13-5/8" 3K x 11" 5K	
A-Sec	13-3/8" SOW x 13-5/8" 3K	

Test Notes:

- Pressure test to rating of BOP or wellhead every 21 days.
- Function test on trips
- H2S service trim required



Kill Line

SIZE	PRESSURE	DESCRIPTION
2"	5,000	Check Valve
2"	5,000	Gate Valve
2"	5,000	Gate Valve

Choke Line

SIZE	PRESSURE	DESCRIPTION
3"	5,000	Gate Valve
3"	5,000	HCR Valve
3"	5,000	Steel Line Only

Chesapeake Minimum BOPE Requirements

Wellname: PLU Big Sinks 19-24-31 USA 1H

Operation: Intermediate and Production Hole Sections

CHOKE MANIFOLD SCHEMATIC

CHESAPEAKE OPERATING INC

Permian District

Avalon Minimum Requirements

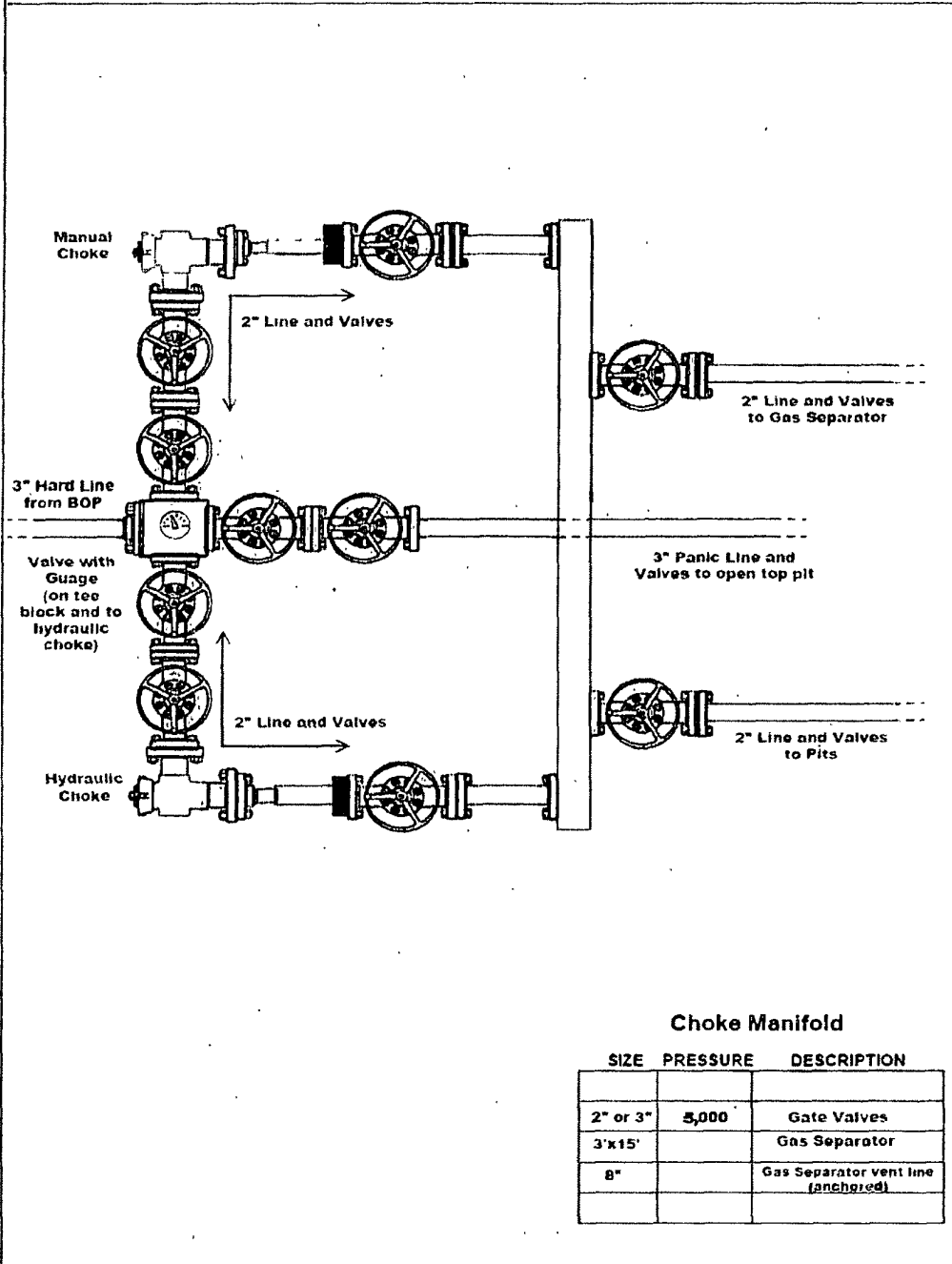
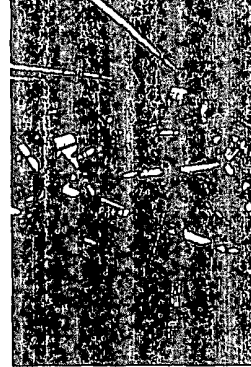
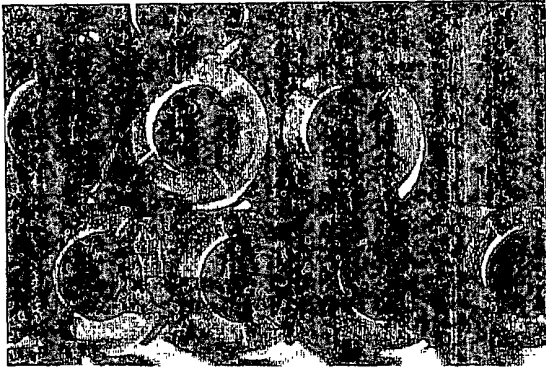


EXHIBIT EA



RIG #62

DRAWWORKS

Skytop Brewster N-75-M (1000HP)
1 1/4" drill line, Parmac 342 auxiliary brake

POWER

(2) Caterpillar 379 engines (550HP each)

LIGHT PLANTS

(2) Caterpillar C-15 engines w/ 320 KW generators

MAST

Ideal 137' w/ 622,000# capacity on 10 lines

SUBSTRUCTURE

Ideal 15' box on box
KB 17" Rotary beam clearance 12' 3"

BLOCK HOOK

McKissick (300 Ton) combo

PUMPS

(2) National 10-P-130 (1300HP each) triplex pumps
Each independently powered by (1) Caterpillar 3512 engine

MUD PITS

(2) tank system - 980 bbl capacity w/ 100 bbl slug pit

SOLIDS EQUIPMENT

Derrick FLC-503 Dual Shaker
Derrick 3-cone desander
Derrick 20-cone desilter
Atmospheric degasser
(5) mud agitators

BOP'S

13 5/8" X 5,000 psi Hydril annular
13 5/8" X 5,000 psi Shaffer double

ACCUMULATOR

Koomey 5-Station, 110 gallon accumulator

CHOKE MANIFOLD

5,000 psi choke manifold

SWIVEL

Continental Emsco (400 Ton)

ROTARY TABLE

National (27 1/2")

DRILL PIPE

4 1/2" drill pipe

DRILL COLLARS

8" and 6 1/2" drill collars
*quantity subject to availability

AUXILIARY EQUIPMENT

Pason EDR (base system)
Fuel Tank - 10,000 gallon capacity
Water Tank - (2) 500 barrel capacity each
Rig Manager Quarters
NOV ST-80 Iron Roughneck
Satellite automatic driller
Mathey survey unit

Revised 10.01.09



**PATTERSON-UTI
DRILLING COMPANY**

**Chesapeake Operating, Inc.'s Closed Loop System
PLU BIG SINKS 19 24 31 USA 1H
Unit C, Sec. 19, T-24-S R-31-E
Eddy Co., NM
API # TBD**

Equipment & Design:

Chesapeake Operating, Inc. is to use a closed loop system with roll-off steel pits. Patterson-UTI Drilling Company has the following equipment for maintenance of their drilling mud:

- (1) Derrick FLC-503 Dual Shale Shaker
- (1) Derrick 3-Cone Desander
- (1) Atmospheric Degasser
- (5) Mud Agitators
- (1) 500 bbl frac tank for fresh water
- (1) 500 bbl frac tank for brine water

Operations & Maintenance:

During each tour, the rig's drilling crew will inspect and monitor the drilling fluids contained within the steel pits and visually monitor any spill which may occur. Should a spill, release, or leak occur; the NMOCD District II office in Artesia (575-748-1283) will be notified. Please note that notifications may be made earlier to the district office should a greater release occur per NMOCD's rules.

Closure:

During and after drilling operations, drilling fluids and cuttings will be hauled to Controlled Recovery, Inc. Permit # NM-01-0006.

The alternative disposal facility will be Sundance Disposal. Permit # NM-01-0003.

Chesapeake Operating, Inc.

Legals:

PLU Big Sinks 19 24 31 USA 1H

Jal, NM

UL C Section 19

Township 24 South

Lat: N 32.20965491

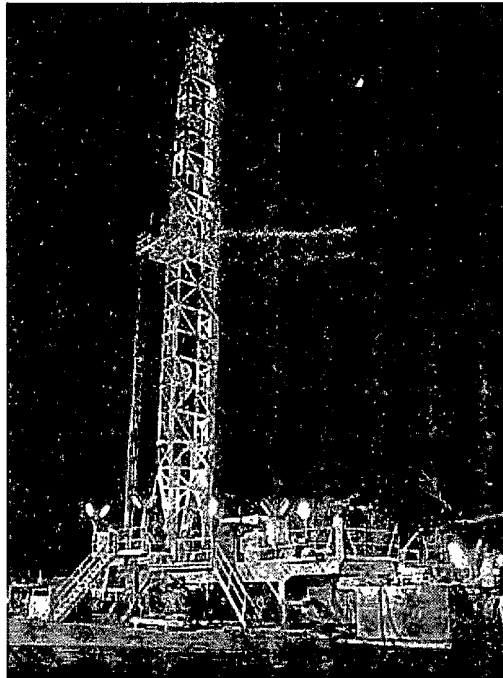
Lat: N 32.19649743

Long: W 103.81928184

Long: W 103.81929126

H₂S

“Contingency Plan”



Safety Solutions, LLC
7907 Industrial

(432) 563-0400
Midland, TX 79706

Emergency Assistance Telephone List

PUBLIC SAFETY: **911 or**

Lea County Sheriff's Department	(575) 396-3611
Jal City Police Dept	(575) 395-2121
Fire Department:	
Jal	(575) 395-2221
Eunice	(575) 394-2111
Ambulance: Jal	(575) 657-4355
Hobbs	
Hospitals:	
Lea Regional Medical Center (Hobbs)	(575) 492-5000
Permian Regional Medical Center (Andrews, TX)	(432) 523-2200
Dept. of Public Safety/Roswell	(575) 622-7200
Texas Dept. of Transportation	(432) 694-7951
U.S. Dept. of Labor	(505) 841-8405
AirMed/ Care Star	(877) 730-0009

Chesapeake Operating, Inc.

Chesapeake / Midland	Office (432) 687-2992
----------------------	-----------------------

Company Drilling Consultants:

Nathan Berg	Cell (405) 618-0767
Marcus Garcia	
Trailer	(832) 380-6700

Drilling Engineer

Chris Gary	Cell (405) 935-4346
------------	---------------------

Drilling Superintendent

Tim Hartsfield	Cell (432) 940-9978
----------------	---------------------

Latshaw

Office	(918) 355-4380
Safety- Cody Ashley	Cell (940) 867-4102
Latshaw	(832) 380-6700
Ray Ash Superintendent	Cell (432) 638-2008
Trailer	(832) 213-5247

Tool Pusher:

Lupe Rodrigues	Cell (432) 755-4418
Jason	Cell (432) 556-0675

Safety Consultants

Safety Solutions, LLC	Office (432) 563-0400
Cliff Strasner	Cell (432) 894-9789
Craig Strasner	Cell (432) 894-0341

Table of Contents

I. H₂S Contingency Plan

- a. Scope
- b. Objective
- c. Discussion of Plan

II. Emergency Procedures

- a. Emergency Procedures
- b. Emergency Reaction Steps
- c. Simulated Blowout Control Drills

III. Ignition Procedures

- a. Responsibility
- b. Instructions

IV. Training Requirements

V. Emergency Equipment

VI. Check Lists

- a. Status Check List
- b. Procedural Check List

VII. Briefing Procedures

VIII. Evacuation Plan

- a. General Plan
- b. Emergency Phone Lists

IX. Maps and Plats

- a. Location Plat
- b. Map to Location
- c. Radius of Exposure

X. General Information

- a. Drilling/Re-entry Permits
- b. H-9 Permit
- c. H₂S Permissible Limits
- d. Toxicity Table
- e. Physical Properties
- f. Respirator Use
- g. Emergency Rescue

H₂S CONTINGENCY PLAN SECTION

Scope:

This contingency plan provides an organized plan of action for alerting and protecting the public within an area of exposure prior to an intentional release, or following the accidental release of a potentially hazardous volume of hydrogen sulfide. The plan establishes guidelines for all personnel whose work activity may involve exposure to Hydrogen Sulfide Gas (H₂S).

Objective:

Prevent any and all accidents, and prevent the uncontrolled release of H₂S into the atmosphere.

Provide proper evacuation procedures to cope with emergencies.

Provide immediate and adequate medical attention should an injury occur.

Discussion of Plan:

Suspected Problem Zones:

Implementation: This plan, with all details, is to be fully implemented 1000' before drilling into the first sour zone.

Emergency Response Procedure: This section outlines the conditions and denotes steps to be taken in the event of an emergency.

Emergency Equipment and Procedure: This section outlines the safety and emergency equipment that will be required for the drilling of this well.

Training Provisions: This section outlines the training provisions that must be adhered to 1000' before drilling into the first sour zone.

Emergency call list: Included are the telephone numbers of all persons that would need to be contacted, should an H₂S emergency occur.

Briefing: This section deals with the briefing of all persons involved with the drilling of this well.

Public Safety: Public Safety Personnel will be made aware of the drilling of this well.

Check Lists: Status check lists and procedural check lists have been included to ensure adherence to the plan.

General Information: A general information section has been included to supply support information.

EMERGENCY PROCEDURES SECTION

- I. In the event of any evidence of H₂S level above 10ppm, take the following steps immediately:
 - a. Secure breathing apparatus.
 - b. Order non-essential personnel out of the danger zone.
 - c. Take steps to determine if the H₂S level can be corrected or suppressed, and if so, proceed with normal operations.
- II. If uncontrollable conditions occur, proceed with the following:
 - a. Take steps to protect and/or remove any public downwind of the rig, including partial evacuation or isolation. Notify necessary public safety personnel and the New Mexico Oil Conservation Division of the situation.
 - b. Remove all personnel to the Safe Briefing Area.
 - c. Notify public safety personnel for help with maintaining roadblocks and implementing evacuation.
 - d. Determine and proceed with the best possible plan to regain control of the well. Maintain tight security and safety measures.
- III. Responsibility:
 - a. The Company Approved Supervisor shall be responsible for the total implementation of the plan.
 - b. The Company Approved Supervisor shall be in complete command during any emergency.
 - c. The Company Approved Supervisor shall designate a back up Supervisor in the event that he/she is not available.

EMERGENCY PROCEDURE IMPLEMENTATION

I. Drilling or Tripping

a. All Personnel

- i. When alarm sounds, don escape unit and report to upwind Safe Briefing Area.
- ii. Check status of other personnel (buddy system).
- iii. Secure breathing apparatus.
- iv. Wait for orders from supervisor.

b. Drilling Foreman

- i. Report to the upwind Safe Briefing Area.
- ii. Don Breathing Apparatus and return to the point of release with the Tool Pusher or Driller (buddy system).
- iii. Determine the concentration of H₂S.
- iv. Assess the situation and take appropriate control measures.

c. Tool Pusher

- i. Report to the upwind Safe Briefing Area.
- ii. Don Breathing Apparatus and return to the point of release with the Drilling Foreman or the Driller (buddy system).
- iii. Determine the concentration of H₂S.
- iv. Assess the situation and take appropriate control measures.

d. Driller

- i. Check the status of other personnel (in a rescue attempt, always use the buddy system).
- ii. Assign the least essential person to notify the Drilling Foreman and Tool Pusher, in the event of their absence.
- iii. Assume the responsibility of the Drilling Foreman and the Tool Pusher until they arrive, in the event of their absence.

e. Derrick Man and Floor Hands

- i. Remain in the upwind Safe Briefing Area until otherwise instructed by a supervisor.

f. Mud Engineer

- i. Report to the upwind Safe Briefing Area.
- ii. When instructed, begin check of mud for pH level and H₂S level.

g. Safety Personnel

- i. Don Breathing Apparatus.
- ii. Check status of personnel.
- iii. Wait for instructions from Drilling Foreman or Tool Pusher.

II. Taking a Kick

- a. All Personnel report to the upwind Safe Briefing Area.
- b. Follow standard BOP procedures.

III. Open Hole Logging

- a. All unnecessary personnel should leave the rig floor.
- b. Drilling Foreman and Safety Personnel should monitor the conditions and make necessary safety equipment recommendations.

IV. Running Casing or Plugging

- a. Follow "Drilling or Tripping" procedures.
- b. Assure that all personnel have access to protective equipment.

SIMULATED BLOWOUT CONTROL DRILLS

All drills will be initiated by activating alarm devices (air horn). One long blast, on the air horn, for ACTUAL and SIMULATED Blowout Control Drills. This operation will be performed by the Drilling Foreman or Tool Pusher at least one time per week for each of the following conditions, with each crew:

Drill #1 Bottom Drilling

Drill #2 Tripping Drill Pipe

In each of these drills, the initial reaction time to shutting in the well shall be timed as well as the total time for the crew to complete its entire pit drill assignment. The times must be recorded on the IADC Driller's Log as "Blowout Control Drill".

Drill No.:

Reaction Time to Shut-In: minutes, seconds.

Total Time to Complete Assignment: minutes, seconds.

I. Drill Overviews

a. Drill No. 1 – Bottom Drilling

- i. Sound the alarm immediately.
- ii. Stop the rotary and hoist Kelly joint above the rotary table.
- iii. Stop the circulatory pump.
- iv. Close the drill pipe rams.
- v. Record casing and drill pipe shut-in pressures and pit volume increases.

b. Drill No. 2 – Tripping Drill Pipe

- i. Sound the alarm immediately.
- ii. Position the upper tool joint just above the rotary table and set the slips.
- iii. Install a full opening valve or inside blowout preventer tool in order to close the drill pipe.
- iv. Close the drill pipe rams.
- v. Record the shut-in annular pressure.
- vi.

II. Crew Assignments

a. Drill No. 1 – Bottom Drilling

i. Driller

1. Stop the rotary and hoist Kelly joint above the rotary table.
2. Stop the circulatory pump.
3. Check Flow.
4. If flowing, sound the alarm immediately
5. Record the shut-in drill pipe pressure
6. Determine the mud weight increase needed or other courses of action.

ii. Derrickman

1. Open choke line valve at BOP.
2. Signal Floor Man #1 at accumulator that choke line is open.
3. Close choke and upstream valve after pipe tam have been closed.
4. Read the shut-in annular pressure and report readings to Driller.

iii. Floor Man #1

1. Close the pipe rams after receiving the signal from the Derrickman.
2. Report to Driller for further instructions.

iv. Floor Man #2

1. Notify the Tool Pusher and Operator representative of the H₂S alarms.
2. Check for open fires and, if safe to do so, extinguish them.
3. Stop all welding operations.
4. Turn-off all non-explosions proof lights and instruments.
5. Report to Driller for further instructions.

v. Tool Pusher

1. Report to the rig floor.

2. Have a meeting with all crews.
3. Compile and summarize all information.
4. Calculate the proper kill weight.
5. Ensure that proper well procedures are put into action.

vi. Operator Representative

1. Notify the Drilling Superintendent.
2. Determine if an emergency exists and if so, activate the contingency plan.

b. Drill No. 2 – Tripping Pipe

i. Driller

1. Sound the alarm immediately when mud volume increase has been detected.
2. Position the upper tool joint just above the rotary table and set slips.
3. Install a full opening valve or inside blowout preventer tool to close the drill pipe.
4. Check flow.
5. Record all data reported by the crew.
6. Determine the course of action.

ii. Derrickman

1. Come down out of derrick.
2. Notify Tool Pusher and Operator Representative.
3. Check for open fires and, if safe to do so , extinguish them.
4. Stop all welding operations.
5. Report to Driller for further instructions.

iii. Floor Man #1

1. Pick up full opening valve or inside blowout preventer tool and stab into tool joint above rotary table (with Floor Man #2).
2. Tighten valve with back-up tongs.
3. Close pipe rams after signal from Floor Man #2.
4. Read accumulator pressure and check for possible high pressure fluid leaks in valves or piping.
5. Report to Driller for further instructions.

iv. Floor Man #2

1. Pick-up full opening valve or inside blowout preventer tool and stab into tool joint above rotary table (with Floor Man #1).
2. Position back-up tongs on drill pipe.
3. Open choke line valve at BOP.
4. Signal Floor Man #1 at accumulator that choke line is open.
5. Close choke and upstream valve after pipe rams have been closed.
6. Check for leaks on BOP stack and choke manifold.
7. Read annular pressure.
8. Report readings to the Driller.

v. Tool Pusher

1. Report to the rig floor.
2. Have a meeting with all of the crews.
3. Compile and summarize all information.
4. See that proper well kill procedures are put into action.

vi. Operator Representative

1. Notify Drilling Superintendent
2. Determine if an emergency exists, and if so, activate the contingency plan.

IGNITION PROCEDURES

Responsibility:

The decision to ignite the well is the responsibility of the DRILLING FOREMAN in concurrence with the STATE POLICE. In the event the Drilling Foreman is incapacitated, it becomes the responsibility of the RIG TOOL PUSHER. This decision should be made only as a last resort and in a situation where it is clear that:

1. Human life and property are endangered.
2. There is no hope of controlling the blowout under the prevailing conditions.

If time permits, notify the main office, but do not delay if human life is in danger. Initiate the first phase of the evacuation plan.

Instructions for Igniting the Well:

1. Two people are required for the actual igniting operation. Both men must wear self-contained breathing apparatus and must use a full body harness and attach a retrievable safety line to the D-Ring in the back. One man must monitor the atmosphere for explosive gases with the LEL monitor, while the Drilling Foreman is responsible for igniting the well.
2. The primary method to ignite is a 25mm flare gun with a range of approximately 500 feet.
3. Ignite from upwind and do not approach any closer than is warranted.
4. Select the ignition site best suited for protection and which offers an easy escape route.
5. Before igniting, check for the presence of combustible gases.
6. After igniting, continue emergency actions and procedures as before.
7. All unassigned personnel will limit their actions to those directed by the Drilling Foreman.

Note: After the well is ignited, burning Hydrogen Sulfide will convert to Sulfur Dioxide, which is also highly toxic. Do not assume the area is safe after the well is ignited.

TRAINING PROGRAM

When working in an area where Hydrogen Sulfide (H₂S) might be encountered, definite training requirements must be carried out. The Company Supervisor will ensure that all personnel, at the well site, have had adequate training in the following:

1. Hazards and characteristics of Hydrogen Sulfide.
2. Physicals effects of Hydrogen Sulfide on the human body.
3. Toxicity of Hydrogen Sulfide and Sulfur Dioxide.
4. H₂S detection, Emergency alarm and sensor location.
5. Emergency rescue.
6. Resuscitators.
7. First aid and artificial resuscitation.
8. The effects of Hydrogen Sulfide on metals.
9. Location safety.

Service company personnel and visiting personnel must be notified if the zone contains H₂S, and each service company must provide adequate training and equipment for their employees before they arrive at the well site.

EMERGENCY EQUIPMENT REQUIREMENTS

Lease Entrance Sign:

Should be located at the lease entrance with the following information:

CAUTION – POTENTIAL POISON GAS
HYDROGEN SULFIDE
NO ADMITTANCE WITHOUT AUTHORIZATION

Respiratory Equipment:

- Fresh air breathing equipment should be placed at the safe briefing areas and should include the following:
- Two SCBA's at each briefing area.
- Enough air line units to operate safely, anytime the H₂S concentration reaches the IDLH level (100 ppm).
- Cascade system with enough breathing air hose and manifolds to reach the rig floor, the derrickman and the other operation areas.

Windssocks or Wind Streamers:

- A minimum of two 10" windssocks located at strategic locations so that they may be seen from any point on location.
- Wind streamers (if preferred) should be placed at various locations on the well site to ensure wind consciousness at all times. (Corners of location).

Hydrogen Sulfide Detector and Alarms:

- 1 - Four channel H₂S monitor with alarms.
- Four (4) sensors located as follows: #1 – Rig Floor, #2 – Bell Nipple, #3 – Shale Shaker, #4 – Mud Pits.
- Gastec or Draeger pump with tubes.
- Sensor test gas.

Well Condition Sign and Flags:

The Well Condition Sign w/flags should be placed a minimum of 150' before you enter the location. It should have three (3) color coded flags (green, yellow and red) that will be used to denote the following location conditions:

GREEN – Normal Operating Conditions
YELLOW – Potential Danger
RED – Danger, H₂S Gas Present

Auxiliary Rescue Equipment:

- Stretcher
- 2 – 100' Rescue lines.
- First Aid Kit properly stocked.

Mud Inspection Equipment:

Garret Gas Train or Hach Tester for inspection of Hydrogen Sulfide in the drilling mud system.

Fire Extinguishers:

Adequate fire extinguishers shall be located at strategic locations.

Blowout Preventer:

- The well shall have hydraulic BOP equipment for the anticipated BHP.
- The BOP should be tested upon installation.
- BOP, Choke Line and Kill Line will be tested as specified by Operator.

Confined Space Monitor:

There should be a portable multi-gas monitor with at least 3 sensors (O₂, LEL H₂S). This instrument should be used to test the atmosphere of any confined space before entering. It should also be used for atmospheric testing for LEL gas before beginning any type of Hot Work. Proper calibration documentation will need to be provided.

Communication Equipment:

- Proper communication equipment such as cell phones or 2-way radios should be available at the rig.
- Radio communication shall be available for communication between the company man's trailer, rig floor and the tool pusher's trailer.

- Communication equipment shall be available on the vehicles.

Special Control Equipment:

- Hydraulic BOP equipment with remote control on the ground.
- Rotating head at the surface casing point.

Evacuation Plan:

- Evacuation routes should be established prior to spudding the well.
- Should be discussed with all rig personnel.

Designated Areas:***Parking and Visitor area:***

- All vehicles are to be parked at a pre-determined safe distance from the wellhead.
- Designated smoking area.

Safe Briefing Areas:

- Two Safe Briefing Areas shall be designated on either side of the location at the maximum allowable distance from the well bore so they offset prevailing winds or they are at a 180 degree angle if wind directions tend to shift in the area.
- Personal protective equipment should be stored at both briefing areas or if a moveable cascade trailer is used, it should be kept upwind of existing winds. When wind is from the prevailing direction, both briefing areas should be accessible.

Note:

- Additional equipment will be available at the Safety Solutions, LLC office.
- Additional personal H₂S monitors are available for all employees on location.
- Automatic Flare Igniters are recommended for installation on the rig.

CHECK LISTS

Status Check List

Note: Date each item as they are implemented.

1. Sign at location entrance. _____
2. Two (2) wind socks (in required locations). _____
3. Wind Streamers (if required). _____
4. SCBA's on location for all rig personnel and mud loggers. _____
5. Air packs, inspected and ready for use. _____
6. Spare bottles for each air pack (if required). _____
7. Cascade system for refilling air bottles. _____
8. Cascade system and hose line hook up. _____
9. Choke manifold hooked-up and tested.
(before drilling out surface casing.) _____
10. Remote Hydraulic BOP control (hooked-up and tested before
drilling out surface casing). _____
11. BOP tested (before drilling out surface casing). _____
12. Mud engineer on location with equipment to test mud for H₂S. _____
13. Safe Briefing Areas set-up _____
14. Well Condition sign and flags on location and ready. _____
15. Hydrogen Sulfide detection system hooked -up & tested. _____
16. Hydrogen Sulfide alarm system hooked-up & tested. _____
17. Stretcher on location at Safe Briefing Area. _____
18. 2 – 100' Life Lines on location. _____
19. 1 – 20# Fire Extinguisher in safety trailer. _____
20. Confined Space Monitor on location and tested. _____
21. All rig crews and supervisor trained (as required). _____

22. Access restricted for unauthorized personnel.

23. Drills on H₂S and well control procedures.

24. All outside service contractors advised of potential H₂S on the well.

25. NO SMOKING sign posted.

26. H₂S Detector Pump w/tubes on location.

27. 25mm Flare Gun on location w/flares.

28. Automatic Flare Igniter installed on rig.

Procedural Check List

Perform the following on each tour:

1. Check fire extinguishers to see that they have the proper charge.
2. Check breathing equipment to insure that they have not been tampered with.
3. Check pressure on the supply air bottles to make sure they are capable of recharging.
4. Make sure all of the Hydrogen Sulfide detection systems are operative.

Perform the following each week:

1. Check each piece of breathing equipment to make sure that they are fully charged and operational. This requires that the air cylinder be opened and the mask assembly be put on and tested to make sure that the regulators and masks are properly working. Negative and Positive pressure should be conducted on all masks.
2. BOP skills.
3. Check supply pressure on BOP accumulator stand-by source.
4. Check all breathing air mask assemblies to see that straps are loosened and turned back, ready for use.
5. Check pressure on cascade air cylinders to make sure they are fully charged and ready to use for refill purposes if necessary.
6. Check all cascade system regulators to make sure they work properly.
7. Perform breathing drills with on-site personnel.
8. Check the following supplies for availability:
 - Stretcher
 - Safety Belts and Ropes
 - Spare air Bottles
 - Spare Oxygen Bottles (if resuscitator required)
 - Gas Detector Pump and Tubes
 - Emergency telephone lists
9. Test the Confined Space Monitor to verify the batteries are good

BRIEFING PROCEDURES

The following scheduled briefings will be held to ensure the effective drilling and operation of this project:

Pre-Spud Meeting

Date: Prior to spudding the well.

Attendance: Drilling Supervisor
Drilling Engineer
Drilling Foreman
Rig Tool Pushers
Rig Drillers
Mud Engineer
All Safety Personnel
Key Service Company Personnel

Purpose: Review and discuss the well program, step-by-step, to insure complete understanding of assignments and responsibilities.

EVACUATION PLAN

General Plan

The direct lines of action prepared by SAFETY SOLUTIONS, LLC to protect the public from hazardous gas situations are as follows:

1. When the company approved supervisor (Drilling Foreman, Tool Pusher or Driller) determine that Hydrogen Sulfide gas cannot be limited to the well location, and the public will be involved, he will activate the evacuation plan. Escape routes are noted on the area map.
2. Company safety personnel or designee will notify the appropriate local government agency that a hazardous condition exists and evacuation needs to be implemented.
3. Company approved safety personnel that have been trained in the use of the proper emergency equipment will be utilized.
4. Law enforcement personnel (State Police, Local Police Department, Fire Department, and the Sheriff's Department) will be called to aid in setting up and maintaining road blocks. Also, they will aid in evacuation of the public if necessary.

NOTE: Law enforcement personnel will not be asked to come into a contaminated area. Their assistance will be limited to uncontaminated areas. Constant radio contact will be maintained with them.

5. After the discharge of gas has been controlled, "Company" safety personnel will determine when the area is safe for re-entry.

See Emergency Action Plan

MAPS AND PLATS
(Maps & Plats Attached)

Affected Notification List

The geologic zones that will be encountered during drilling are known to contain hazardous quantities of H₂S. The accompanying map illustrates the affected areas of the community. The residents within this radius will be notified via a hand delivered written notice describing the activities, potential hazards, conditions of evacuation, evacuation drill siren alarms and other precautionary measures.

Evacuee Description:

Residents: **THERE ARE NO RESIDENTS WITHIN 3000' ROE.**

Notification Process:

A continuous siren audible to all residence will be activated, signaling evacuation of previously notified and informed residents.

Evacuation Plan:

All evacuees will migrate lateral to the wind direction.

The Oil Company will identify all home bound or highly susceptible individuals and make special evacuation preparations, interfacing with the local and emergency medical service as necessary.

***Given no offset well info about H₂S Production, Chesapeake is assuming a ROE of 3000' for 100 ppm, as per Onshore Order 6. A search of the area surrounding the drilling location found no public buildings, roadways, or residences within 1 mile.

Toxic Effects of H₂S Poisoning

Hydrogen Sulfide is extremely toxic. The acceptable ceiling concentration for eight-hour exposure is 10 PPM, which is .001% by volume. Hydrogen Sulfide is heavier than air (specific gravity – 1.192) and is colorless and transparent. Hydrogen Sulfide is almost as toxic as Hydrogen Cyanide and is 5-6 times more toxic than Carbon Monoxide. Occupational exposure limits for Hydrogen Sulfide and other gases are compared below in Table 1. Toxicity table for H₂S and physical effects are shown in Table 2.

Table 1
Permissible Exposure Limits of Various Gases

Common Name	Symbol	Sp. Gravity	TLV	STEL	IDLH
Hydrogen Cyanide	HCN	.94	4.7 ppm	C	
Hydrogen Sulfide	H ₂ S	1.192	10 ppm	15 ppm	100 ppm
Sulfide Dioxide	SO ₂	2.21	2 ppm	5 ppm	
Chlorine	CL	2.45	.5 ppm	1 ppm	
Carbon Monoxide	CO	.97	25 ppm	200 ppm	
Carbon Dioxide	CO ₂	1.52	5000 ppm	30,000 ppm	
Methane	CH ₄	.55	4.7% LEL	14% UEL	

Definitions

- A. TLV – Threshold Limit Value is the concentration employees may be exposed based on a TWA (time weighted average) for eight (8) hours in one day for 40 hours in one (1) week. This is set by ACGIH (American Conference of Governmental Hygienists) and regulated by OSHA.
- B. STEL – Short Term Exposure Limit is the 15 minute average concentration an employee may be exposed to providing that the highest exposure never exceeds the OEL (Occupational Exposure Limit). The OEL for H₂S is 19 PPM.
- C. IDLH – Immediately Dangerous to Life and Health is the concentration that has been determined by the ACGIH to cause serious health problems or death if exposed to this level. The IDLH for H₂S is 100 PPM.
- D. TWA – Time Weighted Average is the average concentration of any chemical or gas for an eight (8) hour period. This is the concentration that any employee may be exposed based on an TWA.

TABLE 2

Percent %	PPM	Toxicity Table of H ₂ S Physical Effects
.0001	1	Can smell less than 1 ppm.
.001	10	TLV for 8 hours of exposure.
.0015	15	STEL for 15 minutes of exposure.
.01	100	Immediately Dangerous to Life & Health. Kills sense of smell in 3 to 5 minutes.
.02	200	Kills sense of smell quickly, may burn eyes and throat.
.05	500	Dizziness, cessation of breathing begins in a few minutes .
.07	700	Unconscious quickly, death will result if not rescued promptly.
.10	1000	Death will result unless rescued promptly. Artificial resuscitation may be necessary.

PHYSICAL PROPERTIES OF H₂S

The properties of all gases are usually described in the context of seven major categories:

COLOR
ODOR
VAPOR DENSITY
EXPLOSIVE LIMITS
FLAMMABILITY
SOLUBILITY (IN WATER)
BOILING POINT

Hydrogen Sulfide is no exception. Information from these categories should be considered in order to provide a fairly complete picture of the properties of the gas.

COLOR – TRANSPARENT

Hydrogen Sulfide is colorless so it is invisible. This fact simply means that you can't rely on your eyes to detect its presence. In fact that makes this gas extremely dangerous to be around.

ODOR – ROTTEN EGGS

Hydrogen Sulfide has a distinctive offensive smell, similar to "rotten eggs". For this reason it earned its common name "sour gas". However, H₂S, even in low concentrations, is so toxic that it attacks and quickly impairs a victim's sense of smell, so it could be fatal to rely on your nose as a detection device.

VAPOR DENSITY – SPECIFIC GRAVITY OF 1.192

Hydrogen Sulfide is heavier than air so it tends to settle in low-lying areas like pits, cellars or tanks. If you find yourself in a location where H₂S is known to exist, protect yourself. Whenever possible, work in an area upwind and keep to higher ground.

EXPLOSIVE LIMITS – 4.3% TO 46%

Mixed with the right proportion of air or oxygen, H₂S will ignite and burn or explode, producing another alarming element of danger besides poisoning.

FLAMMABILITY

Hydrogen Sulfide will burn readily with a distinctive clear blue flame, producing Sulfur Dioxide (SO₂), another hazardous gas that irritates the eyes and lungs.

SOLUBILITY – 4 TO 1 RATIO WITH WATER

Hydrogen Sulfide can be dissolved in liquids, which means that it can be present in any container or vessel used to carry or hold well fluids including oil, water, emulsion and sludge. The solubility of H₂S is dependent on temperature and pressure, but if conditions are right, simply agitating a fluid containing H₂S may release the gas into the air.

BOILING POINT – (-76 degrees Fahrenheit)

Liquefied Hydrogen Sulfide boils at a very low temperature, so it is usually found as a gas.

RESPIRATOR USE

The Occupational Safety and Health Administration (OSHA) regulate the use of respiratory protection to protect the health of employees. OSHA's requirements are written in the Code of Federal Regulations, Title 29, Part 1910, Section 134, Respiratory Protection. This regulation requires that all employees who might be required to wear respirators, shall complete a OSHA mandated medical evaluation questionnaire. The employee then should be fit tested prior to wearing any respirator while being exposed to hazardous gases.

Written procedures shall be prepared covering safe use of respirators in dangerous atmospheric situations, which might be encountered in normal operations or in emergencies. Personnel shall be familiar with these procedures and the available respirators.

Respirators shall be inspected prior to and after each use to make sure that the respirator has been properly cleaned, disinfected and that the respirator works properly. The unit should be fully charged prior to being used.

Anyone who may use respirators shall be properly trained in how to properly seal the face piece. They shall wear respirators in normal air and then in a test atmosphere. (Note: Such items as facial hair (beard or sideburns) and eyeglass temple pieces will not allow a proper seal.) Anyone that may be expected to wear respirators should have these items removed before entering a toxic atmosphere. A special mask must be obtained for anyone who must wear eyeglasses. Contact lenses should not be allowed.

Respirators shall be worn during the following conditions:

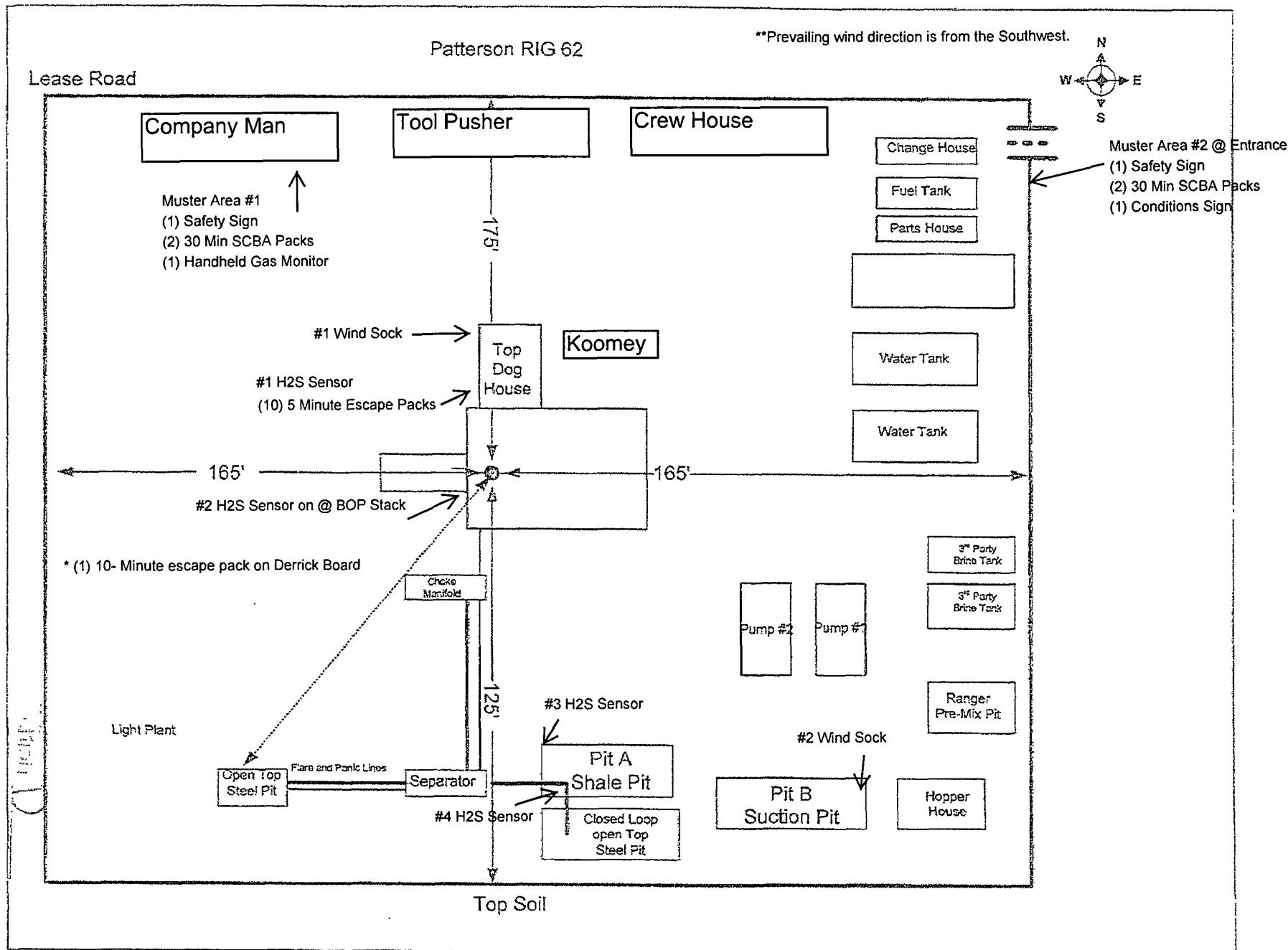
- A. Any employee who works near the top or on the top of any tank unless tests reveal less than 20 ppm of H₂S.
- B. When breaking out any line where H₂S can reasonably be expected.
- C. When sampling air in areas where H₂S may be present.
- D. When working in areas where the concentration of H₂S exceeds the Threshold Limit Value for H₂S (10 ppm).
- E. At any time where there is a doubt as to the H₂S level in the area to be entered.

EMERGENCY RESCUE PROCEDURES

DO NOT PANIC!!!

Remain Calm – Think

1. Before attempting any rescue you must first get out of the hazardous area yourself. Go to a safe briefing area.
2. Sound alarm and activate the 911 system.
3. Put on breathing apparatus. At least two persons should do this, when available use the buddy system.
4. Rescue the victim and return them to a safe briefing area.
5. Perform an initial assessment and begin proper First Aid/CPR procedures.
6. Keep victim lying down with a blanket or coat, etc., under the shoulders to keep airway open. Conserve body heat and do not leave unattended.
7. If the eyes are affected by H₂S, wash them thoroughly with potable water. For slight irritation, cold compresses are helpful.
8. In case a person has only minor exposure and does not lose consciousness totally, it's best if he doesn't return to work until the following day.
9. Any personnel overcome by H₂S should always be examined by medical personnel. They should always be transported to a hospital or doctor.



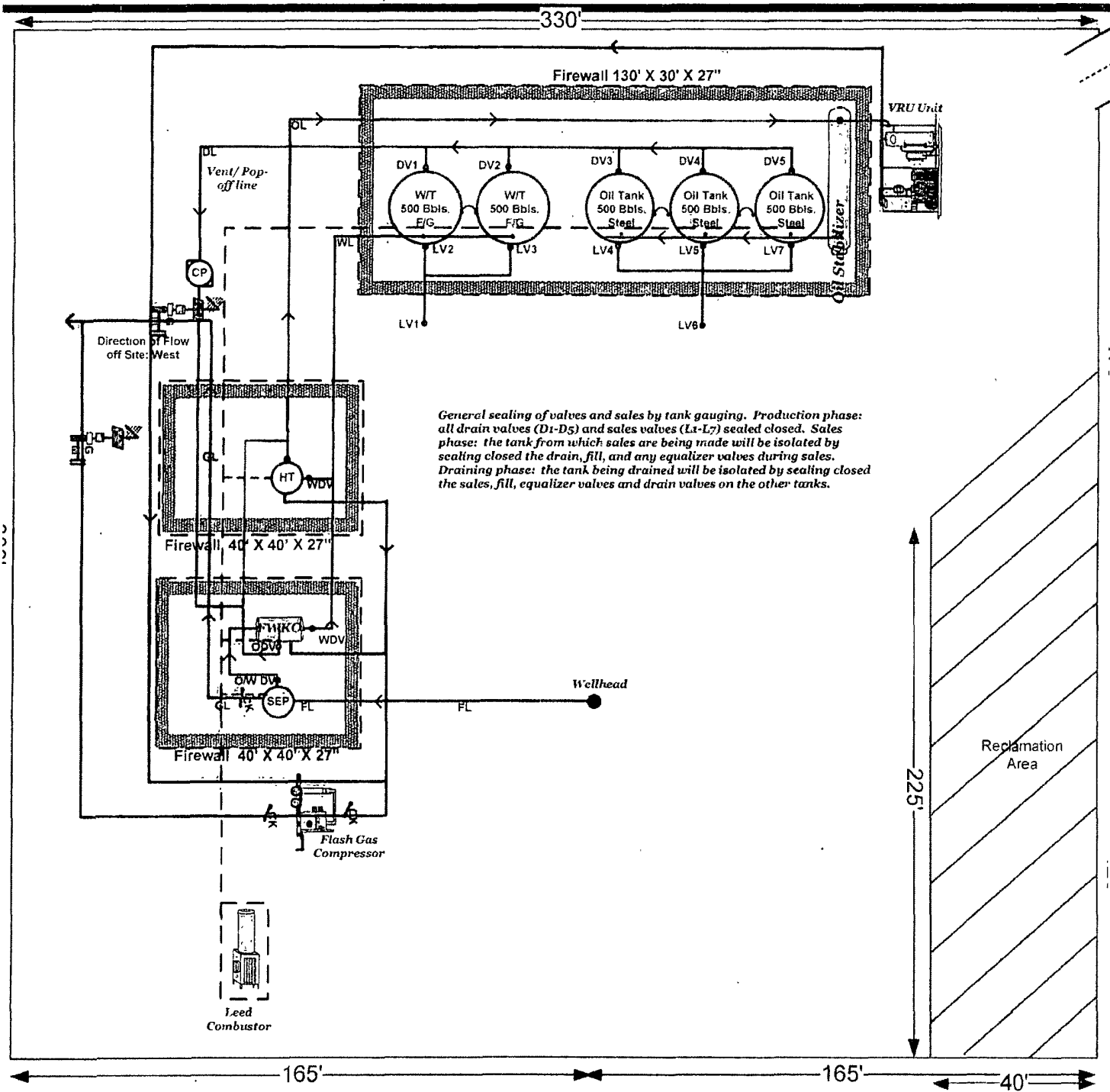
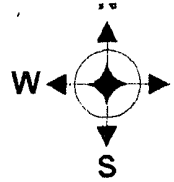


PLU Big Sinks 19-24-31 USA 1H

Property # 643074

Lat.: N 32.2096" – Long.: W 103.8193"
S19/T24S/R31E - 150' FNL & 1980' FWL

Eddy Co., New Mexico



Prepared by: Donny Lowry
Date: 01/26/2012

This lease is subject to Chesapeake's
Site Security Plan located at 6100 N.
Western Oklahoma City, OK 73118

All equipment shown will be on
location, but subject to changes in
positioning

EXHIBIT (A)

PECOS DISTRICT CONDITIONS OF APPROVAL

OPERATOR'S NAME:	Chesapeake Operating Inc.
LEASE NO.:	NMLC061705B
WELL NAME & NO.:	PLU Big Sinks 19 24 31 USA 1H
SURFACE HOLE FOOTAGE:	150' FNL & 1980' FWL
BOTTOM HOLE FOOTAGE:	100' FSL & 1980' FWL
LOCATION:	Section 19, T. 24 S., R. 31 E., NMPM
COUNTY:	Eddy County, New Mexico

TABLE OF CONTENTS

Standard Conditions of Approval (COA) apply to this APD. If any deviations to these standards exist or special COAs are required, the section with the deviation or requirement will be checked below.

- ☐ **General Provisions**
- ☐ **Permit Expiration**
- ☐ **Archaeology, Paleontology, and Historical Sites**
- ☐ **Noxious Weeds**
- ☒ **Special Requirements**
 - Lesser Prairie-Chicken Timing Stipulations
 - Ground-level Abandoned Well Marker
 - Commercial Well Determination
- ☐ **Construction**
 - Notification
 - Topsoil
 - Closed Loop System
 - Federal Mineral Material Pits
 - Well Pads
 - Roads
- ☐ **Road Section Diagram**
- ☒ **Drilling**
 - Logging requirements
 - Waste Material and Fluids
- ☐ **Production (Post Drilling)**
 - Well Structures & Facilities
 - Pipelines
 - Electric Lines
- ☒ **Interim Reclamation**
- ☒ **Final Abandonment & Reclamation**

I. GENERAL PROVISIONS

The approval of the Application For Permit To Drill (APD) is in compliance with all applicable laws and regulations: 43 Code of Federal Regulations 3160, the lease terms, Onshore Oil and Gas Orders, Notices To Lessees, New Mexico Oil Conservation Division (NMOCD) Rules, National Historical Preservation Act As Amended, and instructions and orders of the Authorized Officer. Any request for a variance shall be submitted to the Authorized Officer on Form 3160-5, Sundry Notices and Report on Wells.

II. PERMIT EXPIRATION

If the permit terminates prior to drilling and drilling cannot be commenced within 60 days after expiration, an operator is required to submit Form 3160-5, Sundry Notices and Reports on Wells, requesting surface reclamation requirements for any surface disturbance. However, if the operator will be able to initiate drilling within 60 days after the expiration of the permit, the operator must have set the conductor pipe in order to allow for an extension of 60 days beyond the expiration date of the APD. (Filing of a Sundry Notice is required for this 60 day extension.)

III. ARCHAEOLOGICAL, PALEONTOLOGY & HISTORICAL SITES

Any cultural and/or paleontological resource discovered by the operator or by any person working on the operator's behalf shall immediately report such findings to the Authorized Officer. The operator is fully accountable for the actions of their contractors and subcontractors. The operator shall suspend all operations in the immediate area of such discovery until written authorization to proceed is issued by the Authorized Officer. An evaluation of the discovery shall be made by the Authorized Officer to determine the appropriate actions that shall be required to prevent the loss of significant cultural or scientific values of the discovery. The operator shall be held responsible for the cost of the proper mitigation measures that the Authorized Officer assesses after consultation with the operator on the evaluation and decisions of the discovery. Any unauthorized collection or disturbance of cultural or paleontological resources may result in a shutdown order by the Authorized Officer.

IV. NOXIOUS WEEDS

The operator shall be held responsible if noxious weeds become established within the areas of operations. Weed control shall be required on the disturbed land where noxious weeds exist, which includes the roads, pads, associated pipeline corridor, and adjacent land affected by the establishment of weeds due to this action. The operator shall consult with the Authorized Officer for acceptable weed control methods, which include following EPA and BLM requirements and policies.

V. SPECIAL REQUIREMENT(S)

Timing Limitation Stipulation / Condition of Approval for lesser prairie-chicken: Oil and gas activities including 3-D geophysical exploration, and drilling will not be allowed in lesser prairie-chicken habitat during the period from March 1st through June 15th annually. During that period, other activities that produce noise or involve human activity, such as the maintenance of oil and gas facilities, pipeline, road, and well pad construction, will be allowed except between 3:00 am and 9:00 am. The 3:00 am to 9:00 am restriction will not apply to normal, around-the-clock operations, such as venting, flaring, or pumping, which do not require a human presence during this period. Additionally, no new drilling will be allowed within up to 200 meters of leks known at the time of permitting. Normal vehicle use on existing roads will not be restricted. Exhaust noise from pump jack engines must be muffled or otherwise controlled so as not to exceed 75 db measured at 30 feet from the source of the noise.

Ground-level Abandoned Well Marker to avoid raptor perching: Upon the plugging and subsequent abandonment of the well, the well marker will be installed at ground level on a plate containing the pertinent information for the plugged well. For more installation details, contact the Carlsbad Field Office at 575-234-5972.

VI. CONSTRUCTION

A. NOTIFICATION

The BLM shall administer compliance and monitor construction of the access road and well pad. Notify the Carlsbad Field Office at (575) 234-5972 at least 3 working days prior to commencing construction of the access road and/or well pad.

When construction operations are being conducted on this well, the operator shall have the approved APD and Conditions of Approval (COA) on the well site and they shall be made available upon request by the Authorized Officer.

B. TOPSOIL

The operator shall stockpile the topsoil in a low profile manner in order to prevent wind/water erosion of the topsoil. The topsoil to be stripped is approximately 4 inches in depth. The topsoil will be used for interim and final reclamation.

C. CLOSED LOOP SYSTEM

Tanks are required for drilling operations: No Pits.

The operator shall properly dispose of drilling contents at an authorized disposal site.

D. FEDERAL MINERAL MATERIALS PIT

Payment shall be made to the BLM prior to removal of any federal mineral materials. Call the Carlsbad Field Office at (575) 234-5972.

E. WELL PAD SURFACING

Surfacing of the well pad is not required.

If the operator elects to surface the well pad, the surfacing material may be required to be removed at the time of reclamation.

The well pad shall be constructed in a manner which creates the smallest possible surface disturbance, consistent with safety and operational needs.

F. ON LEASE ACCESS ROADS

Road Width

The access road shall have a driving surface that creates the smallest possible surface disturbance and does not exceed fourteen (14) feet in width. The maximum width of surface disturbance, when constructing the access road, shall not exceed twenty (20) feet.

Surfacing

Surfacing material is not required on the new access road driving surface. If the operator elects to surface the new access road or pad, the surfacing material may be required to be removed at the time of reclamation.

Where possible, no improvements should be made on the unsurfaced access road other than to remove vegetation as necessary, road irregularities, safety issues, or to fill low areas that may sustain standing water.

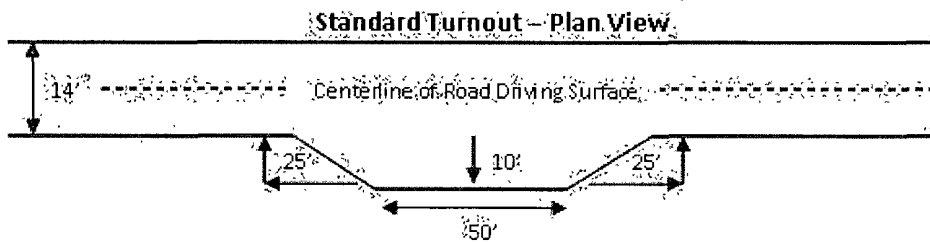
The Authorized Officer reserves the right to require surfacing of any portion of the access road at any time deemed necessary. Surfacing may be required in the event the road deteriorates, erodes, road traffic increases, or it is determined to be beneficial for future field development. The surfacing depth and type of material will be determined at the time of notification.

Crowning

Crowning shall be done on the access road driving surface. The road crown shall have a grade of approximately 2% (i.e., a 1" crown on a 14' wide road). The road shall conform to Figure 1; cross section and plans for typical road construction.

Turnouts

Vehicle turnouts shall be constructed on the road. Turnouts shall be intervisible with interval spacing distance less than 1000 feet. Turnouts shall be constructed on all blind curves. Turnouts shall conform to the following diagram:

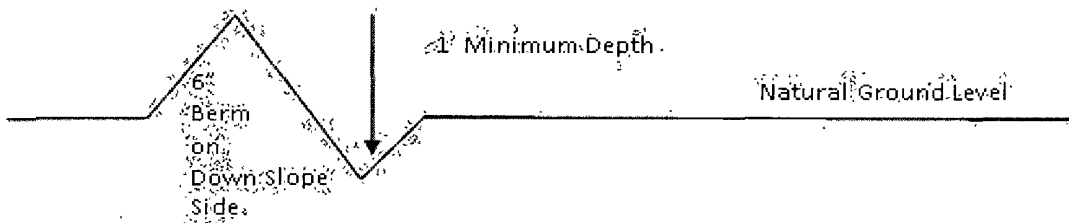


Drainage

Drainage control systems shall be constructed on the entire length of road (e.g. ditches, sidehill outsloping and insloping, lead-off ditches, culvert installation, and low water crossings).

A typical lead-off ditch has a minimum depth of 1 foot below and a berm of 6 inches above natural ground level. The berm shall be on the down-slope side of the lead-off ditch.

Cross Section of a Typical Lead-off Ditch



All lead-off ditches shall be graded to drain water with a 1 percent minimum to 3 percent maximum ditch slope. The spacing interval are variable for lead-off ditches and shall be determined according to the formula for spacing intervals of lead-off ditches, but may be amended depending upon existing soil types and centerline road slope (in %);

Formula for Spacing Interval of Lead-off Ditches

Example - On a 4% road slope that is 400 feet long, the water flow shall drain water into a lead-off ditch. Spacing interval shall be determined by the following formula:

$$400 \text{ foot road with } 4\% \text{ road slope: } \frac{400'}{4\%} + 100' = 200' \text{ lead-off ditch interval}$$

Culvert Installations

Appropriately sized culvert(s) shall be installed at the deep waterway channel flow crossing.

Cattleguards

An appropriately sized cattleguard(s) sufficient to carry out the project shall be installed and maintained at fence crossing(s).

Any existing cattleguard(s) on the access road shall be repaired or replaced if they are damaged or have deteriorated beyond practical use. The operator shall be responsible for the condition of the existing cattleguard(s) that are in place and are utilized during lease operations.

A gate shall be constructed and fastened securely to H-braces.

Fence Requirement

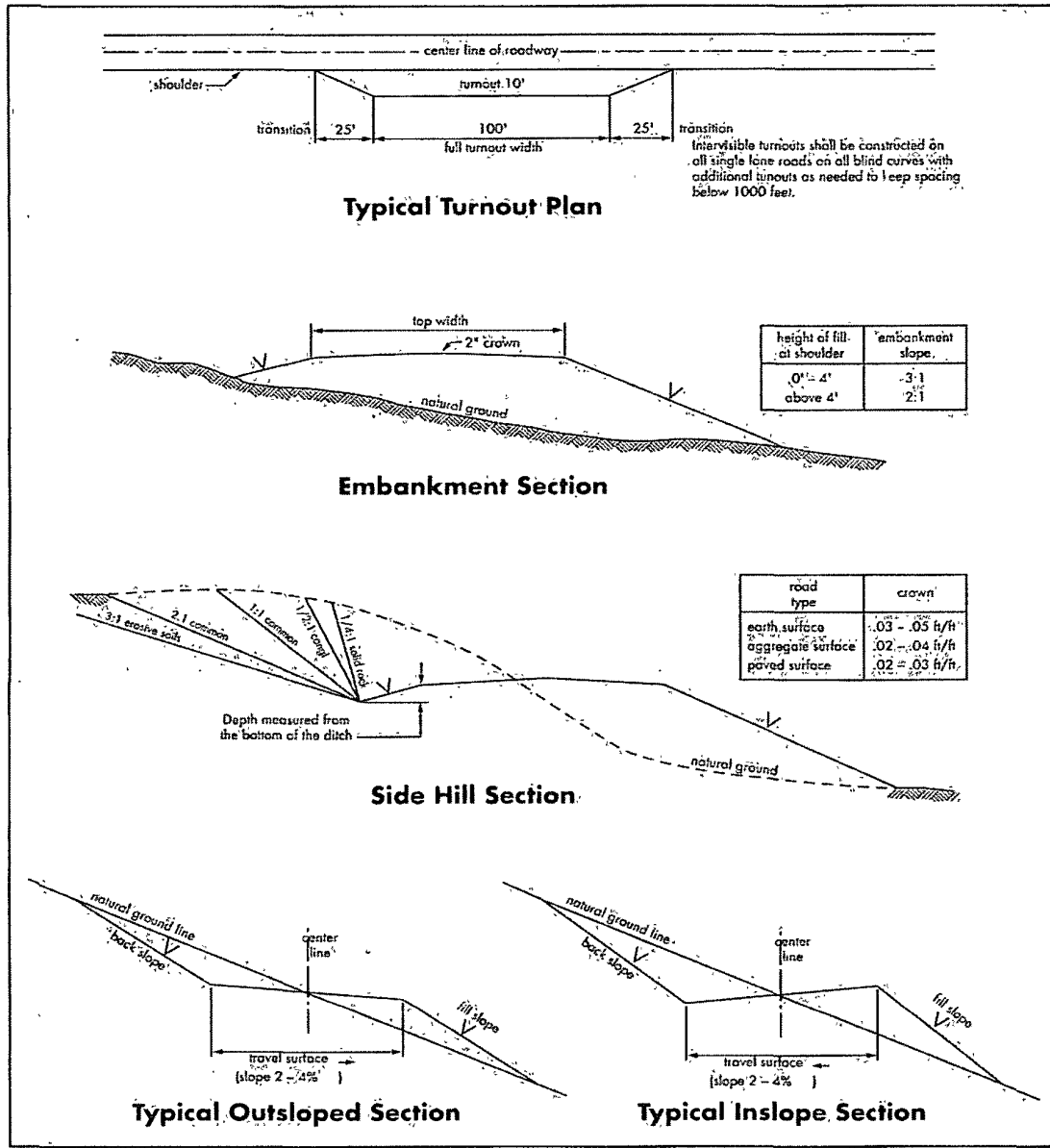
Where entry is required across a fence line, the fence shall be braced and tied off on both sides of the passageway prior to cutting.

The operator shall notify the private surface landowner or the grazing allotment holder prior to crossing any fence(s).

Public Access

Public access on this road shall not be restricted by the operator without specific written approval granted by the Authorized Officer.

Figure 1 – Cross Sections and Plans For Typical Road Sections



VII. DRILLING

A. DRILLING OPERATIONS REQUIREMENTS

The BLM is to be notified a minimum of 4 hours in advance for a representative to witness:

- a. Spudding well
- b. Setting and/or Cementing of all casing strings
- c. BOPE tests

☒ **Eddy County**

Call the Carlsbad Field Office, 620 East Greene St., Carlsbad, NM 88220,
(575) 361-2822

1. **Although Hydrogen Sulfide has not been reported in the area, it is always a potential hazard. If Hydrogen Sulfide is encountered, please report measured amounts and formations to the BLM.**
2. Unless the production casing has been run and cemented or the well has been properly plugged, the drilling rig shall not be removed from over the hole without prior approval. **If the drilling rig is removed without approval – an Incident of Non-Compliance will be written and will be a “Major” violation.**
3. Floor controls are required for 3M or Greater systems. These controls will be on the rig floor, unobstructed, readily accessible to the driller and will be operational at all times during drilling and/or completion activities. Rig floor is defined as the area immediately around the rotary table; the area immediately above the substructure on which the draw works are located, this does not include the dog house or stairway area.
4. **The record of the drilling rate along with the GR/N well log run from TD to surface (horizontal well – vertical portion of hole) shall be submitted to the BLM office as well as all other logs run on the borehole 30 days from completion. If available, a digital copy of the logs is to be submitted in addition to the paper copies. The Rustler top and top and bottom of Salt are to be recorded on the Completion Report.**

B. CASING

Changes to the approved APD casing program need prior approval if the items substituted are of lesser grade or different casing size. The Operator can exchange the components of the proposal with that of superior strength (i.e. changing from J-55 to N-80, or from 36# to 40#).

Changes to the approved cement program need prior approval if the altered cement plan has less volume or strength or if the changes are substantial (i.e. Multistage tool, ECP, etc.).

Centralizers required on surface casing per Onshore Order 2.III.B.1.f.

Wait on cement (WOC) time prior to drilling out for a primary cement job will be a minimum 18 hours for a water basin, 24 hours in the potash area, or 500 pounds compressive strength, whichever is greater for all casing strings. DURING THIS WOC TIME, NO DRILL PIPE, ETC. SHALL BE RUN IN THE HOLE. Provide compressive strengths including hours to reach required 500 pounds compressive strength prior to cementing each casing string. See individual casing strings for details regarding lead cement slurry requirements.

No pea gravel permitted for remedial or fall back remedial without prior authorization from the BLM engineer.

**Possible water flows in the Castile, Salado, Delaware and Bone Springs Groups
Possible lost circulation in the Delaware and Bone Spring formations**

1. The 13-3/8 inch surface casing shall be set at **approximately 650 feet (below the Magenta Dolomite member of the Rustler Anhydrite and above the salt)** and cemented to the surface.
 - a. If cement does not circulate to the surface, the appropriate BLM office shall be notified and a temperature survey utilizing an electronic type temperature survey with surface log readout will be used or a cement bond log shall be run to verify the top of the cement. Temperature survey will be run a minimum of six hours after pumping cement and ideally between 8-10 hours after completing the cement job.
 - b. **Wait on cement (WOC) time for a primary cement job is to include the lead cement slurry.**
 - c. Wait on cement (WOC) time for a remedial job will be a minimum of 4 hours after bringing cement to surface or 500 pounds compressive strength, whichever is greater.
 - d. If cement falls back, remedial cementing will be done prior to drilling out that string.
2. The minimum required fill of cement behind the 8-5/8 inch intermediate casing is: **(Ensure casing is set in the base of the Castile or the Lamar at approximately 4200')**

☒ Cement to surface. If cement does not circulate see B.1.a, c-d above.

Centralizers required on horizontal leg, must be type for horizontal service and a minimum of one every other joint.

The pilot hole plugging is approved as written.

3. The minimum required fill of cement behind the **5-1/2** inch production casing is:
 - a. First stage to DV tool, cement shall:
 - ☒ Cement to circulate. If cement does not circulate, contact the appropriate BLM office before proceeding with second stage cement job. Operator should have plans as to how they will achieve circulation on the next stage.
 - b. Second stage above DV tool, cement shall:
 - ☒ Cement should tie-back at least **500** feet into previous casing string. Operator shall provide method of verification.
4. If hardband drill pipe is rotated inside casing, returns will be monitored for metal. If metal is found in samples, drill pipe will be pulled and rubber protectors which have a larger diameter than the tool joints of the drill pipe will be installed prior to continuing drilling operations.

C. PRESSURE CONTROL

1. All blowout preventer (BOP) and related equipment (BOPE) shall comply with well control requirements as described in Onshore Oil and Gas Order No. 2 and API RP 53 Sec. 17.
2. Minimum working pressure of the blowout preventer (BOP) and related equipment (BOPE) required for drilling below the surface casing shoe shall be **3000 (3M)** psi. **Operator installing a 5M and testing as a 3M.**
 - a. **For surface casing only:** If the BOP/BOPE is to be tested against casing, the wait on cement (WOC) time for that casing is to be met (see WOC statement at start of casing section). Independent service company required.
3. The appropriate BLM office shall be notified a minimum of 4 hours in advance for a representative to witness the tests.

- a. In a water basin, for all casing strings utilizing slips, these are to be set as soon as the crew and rig are ready and any fallback cement remediation has been done. The casing cut-off and BOP installation can be initiated four hours after installing the slips, which will be approximately six hours after bumping the plug. For those casing strings not using slips, the minimum wait time before cut-off is eight hours after bumping the plug. BOP/BOPE testing can begin after cut-off or once cement reaches 500 psi compressive strength (including lead when specified), whichever is greater. However, if the float does not hold, cut-off cannot be initiated until cement reaches 500 psi compressive strength (including lead when specified).
- b. The tests shall be done by an independent service company utilizing a test plug **not a cup or J-packer**. The operator also has the option of utilizing an independent tester to test without a plug (i.e. against the casing) pursuant to Onshore Order 2 with the pressure not to exceed 70% of the burst rating for the casing. Any test against the casing must meet the WOC time for water basin (18 hours) or potash (24 hours) or 500 pounds compressive strength, whichever is greater, prior to initiating the test (see casing segment as lead cement may be critical item).
- c. The results of the test shall be reported to the appropriate BLM office.
- d. All tests are required to be recorded on a calibrated test chart. **A copy of the BOP/BOPE test chart and a copy of independent service company test will be submitted to the appropriate BLM office.**
- e. The BOP/BOPE test shall include a low pressure test from 250 to 300 psi. The test will be held for a minimum of 10 minutes if test is done with a test plug and 30 minutes without a test plug.

D. DRILL STEM TEST

If drill stem tests are performed, Onshore Order 2.III.D shall be followed.

E. WASTE MATERIAL AND FLUIDS

All waste (i.e. drilling fluids, trash, salts, chemicals, sewage, gray water, etc.) created as a result of drilling operations and completion operations shall be safely contained and disposed of properly at a waste disposal facility. No waste material or fluid shall be disposed of on the well location or surrounding area.

Porto-johns and trash containers will be on-location during fracturing operations or any other crew-intensive operations.

CRW 040412

VIII. PRODUCTION (POST DRILLING)

A. WELL STRUCTURES & FACILITIES

Placement of Production Facilities

Production facilities should be placed on the well pad to allow for maximum interim recontouring and revegetation of the well location.

Containment Structures

The containment structure shall be constructed to hold the capacity of the entire contents of the largest tank, plus 24 hour production, unless more stringent protective requirements are deemed necessary by the Authorized Officer.

Painting Requirement

All above-ground structures including meter housing that are not subject to safety requirements shall be painted a flat non-reflective paint color
Shale Green, Munsell Soil Color Chart # 5Y 4/2

B. PIPELINES

Temporary Freshwater Pipelines (Fracturing Operations) CONDITIONS OF APPROVAL

Maintain a copy of your temporary permit and your approved route diagram on location. BLM personnel may request to see a copy of your permit during construction to ensure compliance with all conditions of approval.

Holder agrees to comply with the following conditions of approval to the satisfaction of the Authorized Officer:

1. The Holder shall indemnify the United States against any liability for damage to life or property arising from the occupancy or use of public lands under this permit.

2. Standard Conditions of Approval:

- Temporary pipelines must be removed within 30-45 days from this route unless granted in writing by the authorized officer.
- Temporary pipelines flowing from the frac pond to the target well(s) will be laid along existing roadways unless an exception has been granted by the authorized officer.
- Pipe will be hand-carried and hand-laid along any cross country portion of the approved route.
- Areas impacted (disturbed greater than vegetation compaction) by your project may require full reclamation.

- Pipelines will be empty before disassembly. Flow water back to the pond whenever possible.
- Do not restrict traffic on existing roads. Place ramps where needed.
- Pipe will be placed not more than 2 feet off the edge of existing lease roads, 2-track roads, or buried pipeline corridors.
- All pumps will be placed on existing disturbance (pads, roads, etc.).

3. Any cultural and/or paleontological resources (historic or prehistoric site or object) discovered by the holder, or any person working on his behalf shall be immediately reported to the Authorized Officer. Holder shall suspend all operations in the immediate area of such discovery until written authorization to proceed is issued by the Authorized Officer.

C. ELECTRIC LINES (not applied for in APD)

IX. INTERIM RECLAMATION

During the life of the development, all disturbed areas not needed for active support of production operations should undergo interim reclamation in order to minimize the environmental impacts of development on other resources and uses.

Within six (6) months of well completion, operators should work with BLM surface management specialists (Jim Amos: 575-234-5909) to devise the best strategies to reduce the size of the location. Interim reclamation should allow for remedial well operations, as well as safe and efficient removal of oil and gas.

During reclamation, the removal of caliche is important to increasing the success of revegetating the site. Removed caliche that is free of contaminants may be used for road repairs, fire walls or for building other roads and locations. In order to operate the well or complete workover operations, it may be necessary to drive, park and operate on restored interim vegetation within the previously disturbed area. Disturbing revegetated areas for production or workover operations will be allowed. If there is significant disturbance and loss of vegetation, the area will need to be revegetated. Communicate with the appropriate BLM office for any exceptions/exemptions if needed.

All disturbed areas after they have been satisfactorily prepared need to be reseeded with the seed mixture provided below.

Upon completion of interim reclamation, the operator shall submit a Sundry Notices and Reports on Wells, Subsequent Report of Reclamation (Form 3160-5).

X. FINAL ABANDONMENT & RECLAMATION

At final abandonment, well locations, production facilities, and access roads must undergo "final" reclamation so that the character and productivity of the land are restored.

Earthwork for final reclamation must be completed within six (6) months of well plugging. All pads, pits, facility locations and roads must be reclaimed to a satisfactory revegetated, safe, and stable condition, unless an agreement is made with the landowner or BLM to keep the road and/or pad intact.

After all disturbed areas have been satisfactorily prepared, these areas need to be revegetated with the seed mixture provided below. Seeding should be accomplished by drilling on the contour whenever practical or by other approved methods. Seeding may need to be repeated until revegetation is successful, as determined by the BLM.

Operators shall contact a BLM surface protection specialist prior to surface abandonment operations for site specific objectives (Jim Amos: 575-234-5909).

Ground-level Abandoned Well Marker to avoid raptor perching: Upon the plugging and subsequent abandonment of the well, the well marker will be installed at ground level on a plate containing the pertinent information for the plugged well.

Seed Mixture for LPC Sand/Shinnery Sites

The holder shall seed all disturbed areas with the seed mixture listed below. The seed mixture shall be planted in the amounts specified in pounds of pure live seed (PLS)* per acre. There shall be no primary or secondary noxious weeds in the seed mixture. Seed will be tested and the viability testing of seed will be done in accordance with State law(s) and within nine (9) months prior to purchase. Commercial seed will be either certified or registered seed. The seed container will be tagged in accordance with State law(s) and available for inspection by the authorized officer.

Seed will be planted using a drill equipped with a depth regulator to ensure proper depth of planting where drilling is possible. The seed mixture will be evenly and uniformly planted over the disturbed area (smaller/heavier seeds have a tendency to drop the bottom of the drill and are planted first). The holder shall take appropriate measures to ensure this does not occur. Where drilling is not possible, seed will be broadcast and the area shall be raked or chained to cover the seed. When broadcasting the seed, the pounds per acre are to be doubled. The seeding will be repeated until a satisfactory stand is established as determined by the authorized officer. Evaluation of growth will not be made before completion of at least one full growing season after seeding.

Species to be planted in pounds of pure live seed* per acre:

<u>Species</u>	<u>lb/acre</u>
Plains Bristlegrass	5lbs/A
Sand Bluestem	5lbs/A
Little Bluestem	3lbs/A
Big Bluestem	6lbs/A
Plains Coreopsis	2lbs/A
Sand Dropseed	1lbs/A

*Pounds of pure live seed:

Pounds of seed x percent purity x percent germination = pounds pure live seed