

DISTRICT I
1625 N. French Dr., Hobbs, NM 88240

DISTRICT II
1301 W. Grand Avenue, Artesia, NM 88210

DISTRICT III
1000 Rio Brazos Rd., Aztec, NM 87410

DISTRICT IV
1220 S. St. Francis Dr., Santa Fe, NM 87505

State of New Mexico
Energy, Minerals and Natural Resources Department

RECEIVED
APR 19 2012
Form C-102
Revised July 16, 2010
Submit this copy to appropriate District Office

OIL CONSERVATION DIVISION
1220 South St. Francis Dr.
Santa Fe, New Mexico 87505

NMOC ARTESIA
"Actual B.N.L."

WELL LOCATION AND ACREAGE DEDICATION PLAT

AMENDED REPORT

API Number 30-013-39143	Pool Code 96047	Pool Name Poker Lake, SW (Delaware)
Property Code 306402	Property Name POKER LAKE UNIT	
OGRID No. 260737	Operator Name BOPCO, L.P.	Well Number 357H
		Elevation 3466'

Surface Location

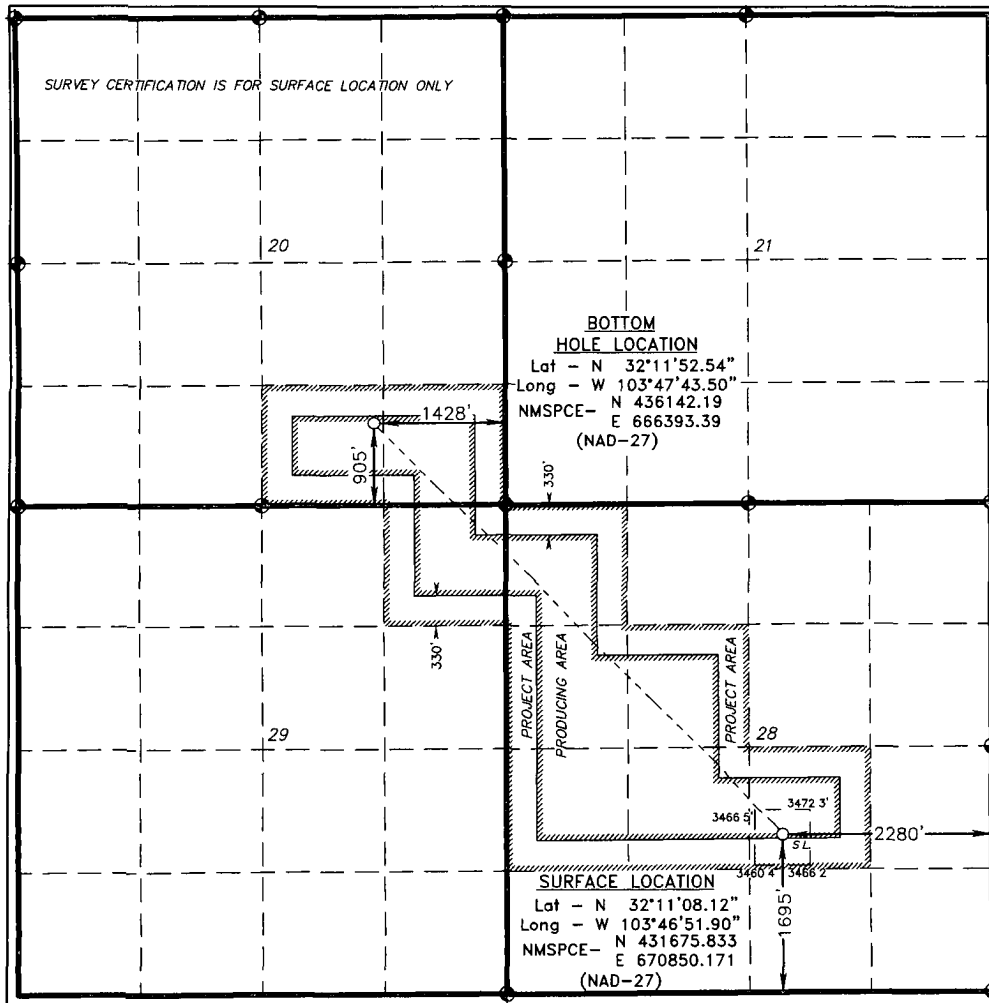
UL or lot No.	Section	Township	Range	Lot Idn	Feet from the	North/South line	Feet from the	East/West line	County
J	28	24 S	31 E		1695	SOUTH	2280	EAST	EDDY

Bottom Hole Location If Different From Surface

UL or lot No.	Section	Township	Range	Lot Idn	Feet from the	North/South line	Feet from the	East/West line	County
0	20	24 S	31 E		905	SOUTH	1428	EAST	EDDY

Dedicated Acres	Joint or Infill	Consolidation Code	Order No.
320			

NO ALLOWABLE WILL BE ASSIGNED TO THIS COMPLETION UNTIL ALL INTERESTS HAVE BEEN CONSOLIDATED OR A NON-STANDARD UNIT HAS BEEN APPROVED BY THE DIVISION



OPERATOR CERTIFICATION

I hereby certify that the information contained herein is true and complete to the best of my knowledge and belief, and that this organization either owns a working interest or unleased mineral interest in the land including the proposed bottom hole location or has a right to drill this well at this location pursuant to a contract with an owner of such a mineral or working interest, or to a voluntary pooling agreement or a compulsory pooling order heretofore entered by the division.

Sandra J. Belt 4-10-12
Signature Date

Sandra J. Belt
Printed Name

sjbelt@basspet.com
Email Address

SURVEYOR CERTIFICATION

I hereby certify that the well location shown on this plat was plotted from field notes of actual surveys made by me or under my supervision, and that the same is true and correct to the best of my belief.

DECEMBER 10, 2010
Date Surveyed

[Signature]
Signature & Seal of Professional Surveyor

Certificate No. Gary L. Jones 7977

BASIN SURVEYS 23801