

District I
1625 N. French Dr., Hobbs, NM 88240

District II
1301 W. Grand Avenue, Artesia, NM 88210

District III
1000 Rio Brazos Rd., Aztec, NM 87410

District IV
1220 S. St. Francis Dr., Santa Fe, NM 87505

RECEIVED

State of New Mexico MAY 01 2012
Energy, Minerals & Natural Resources Department
OIL CONSERVATION DIVISION ARTESIA
1220 South St. Frances Dr.
Santa Fe, NM 87505

Form C-102
Revised October 15, 2009
Submit one copy to appropriate
District Office

☐ AMENDED REPORT

WELL LOCATION AND ACREAGE DEDICATION PLAT

| | | |
|------------------------------|--------------------------------------|--|
| 1 API Number 30-015-37773 | 2 Pool Code 96610 | 3 Pool Name EMPIRE; GLORIETA-YESO, EAST |
| 4 Property Code 37902 | 5 Property Name HATFIELD STATE | |
| 6 Well Number 12 | | |
| 7 OGRID No. 229137 | 8 Operator Name COG OPERATING LLC | 9 Elevation 3628 5 |

10 Surface Location

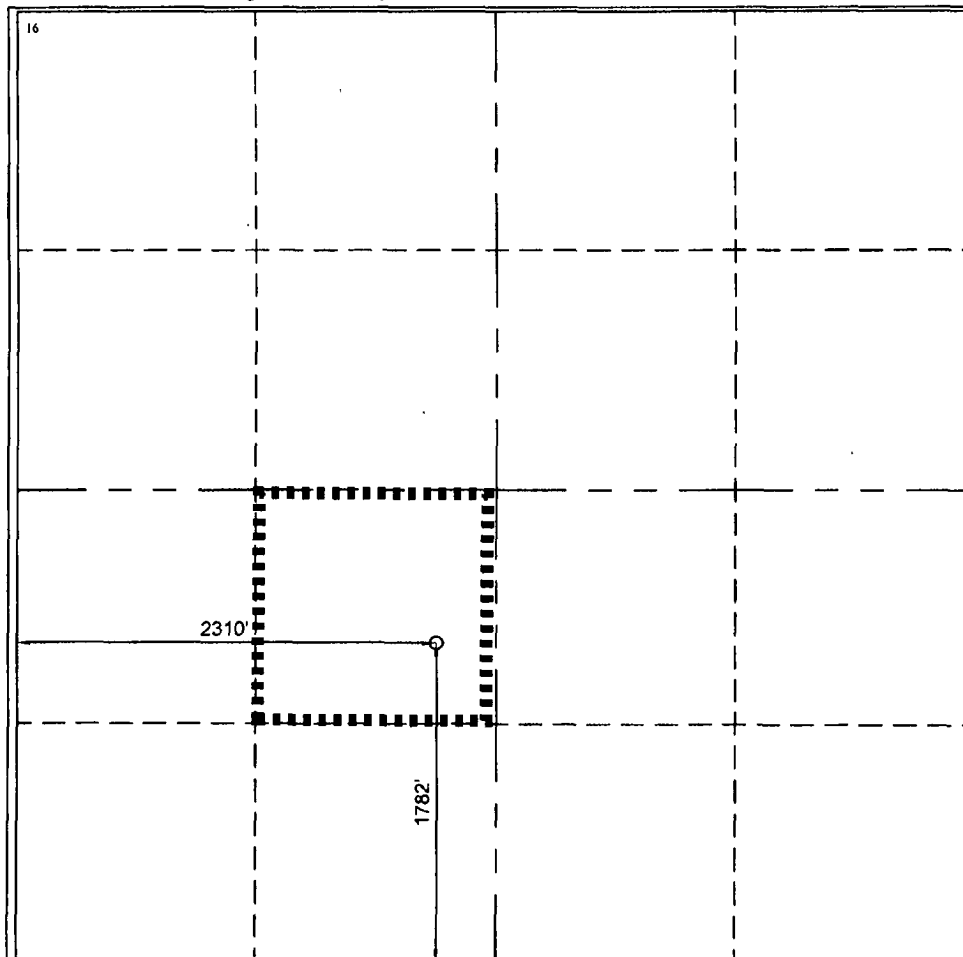
| | | | | | | | | | |
|----------------|--------------|------------------|---------------|---------|-----------------------|---------------------------|-----------------------|------------------------|----------------|
| UL or lot K | Section 8 | Township 17 S | Range 29 E | Lot Idn | Feet from the 1782 | North/South line SOUTH | Feet from the 2310 | East/West line WEST | County EDDY |
|----------------|--------------|------------------|---------------|---------|-----------------------|---------------------------|-----------------------|------------------------|----------------|

11 Bottom Hole Location If Different From Surface

| | | | | | | | | | |
|-----------|---------|----------|-------|---------|---------------|------------------|---------------|----------------|--------|
| UL or lot | Section | Township | Range | Lot Idn | Feet from the | North/South line | Feet from the | East/West line | County |
| | | | | | | | | | |

| | | | |
|--------------------------|--------------------|-----------------------|-------------|
| 12 Dedicated Acres 40 | 13 Joint or Infill | 14 Consolidation Code | 15 Order No |
|--------------------------|--------------------|-----------------------|-------------|

No allowable will be assigned to this completion until all interests have been consolidated or a non-standard unit has been approved by the division

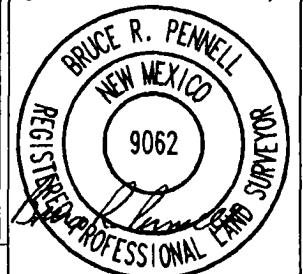


17 OPERATOR CERTIFICATION
I hereby certify that the information contained herein is true and complete to the best of my knowledge and belief, and that this organization either owns a working interest or unleased mineral interest in the land including the proposed bottom hole location or has a right to drill this well at this location pursuant to a contract with an owner of such a mineral or working interest, or to a voluntary pooling agreement or a compulsory pooling order heretofore enter by the division.

[Signature] 4/26/12
Signature Date
Chasity Jackson
Printed Name

18 SURVEYOR CERTIFICATION
I hereby certify that the well location shown on this plat was plotted from field notes of actual surveys made by me or under my supervision, and that the same is true and correct to the best of my belief.

02/23/2010
Date of Survey
Signature and Seal of Professional Surveyor



| | | | |
|-------------------------------------|-----------------|----------------------------|--------------|
| NAD27 GEOGRAPHIC COORDINATES | | NAD27 SPC - NM EAST | |
| LAT: 32.84661 | LON: -104.09757 | X = 572405.5 | Y = 671790.4 |

Bruce R. Pennell
Certificate Number 9062