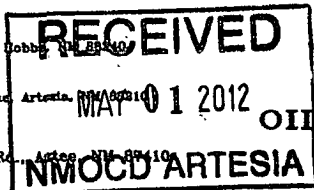


DISTRICT I
1625 N. French Dr., Hobbs, NM 88401
DISTRICT II
1501 W. Grand Avenue, Artesia, NM 88410
DISTRICT III
1000 Rio Brazos Rd., Artesia, NM 88410
DISTRICT IV
1220 S. St. Francis Dr., Santa Fe, NM 87505



State of New Mexico
Energy, Minerals and Natural Resources Department

Form C-102
Revised July 18, 2010

Submit one copy to appropriate
District Office

OIL CONSERVATION DIVISION
1220 South St. Francis Dr.
Santa Fe, New Mexico 87505

WELL LOCATION AND ACREAGE DEDICATION PLAT

☐ AMENDED REPORT

API Number 30-015-39977	Pool Code 96831	Pool Name Cedar Lake Gloria Ta Yeso
Property Code 33178	Property Name STEVENS "B"	Well Number 7
OGRID No. 03080	Operator Name BURNETT OIL COMPANY, INC.	Elevation 3731'

Surface Location

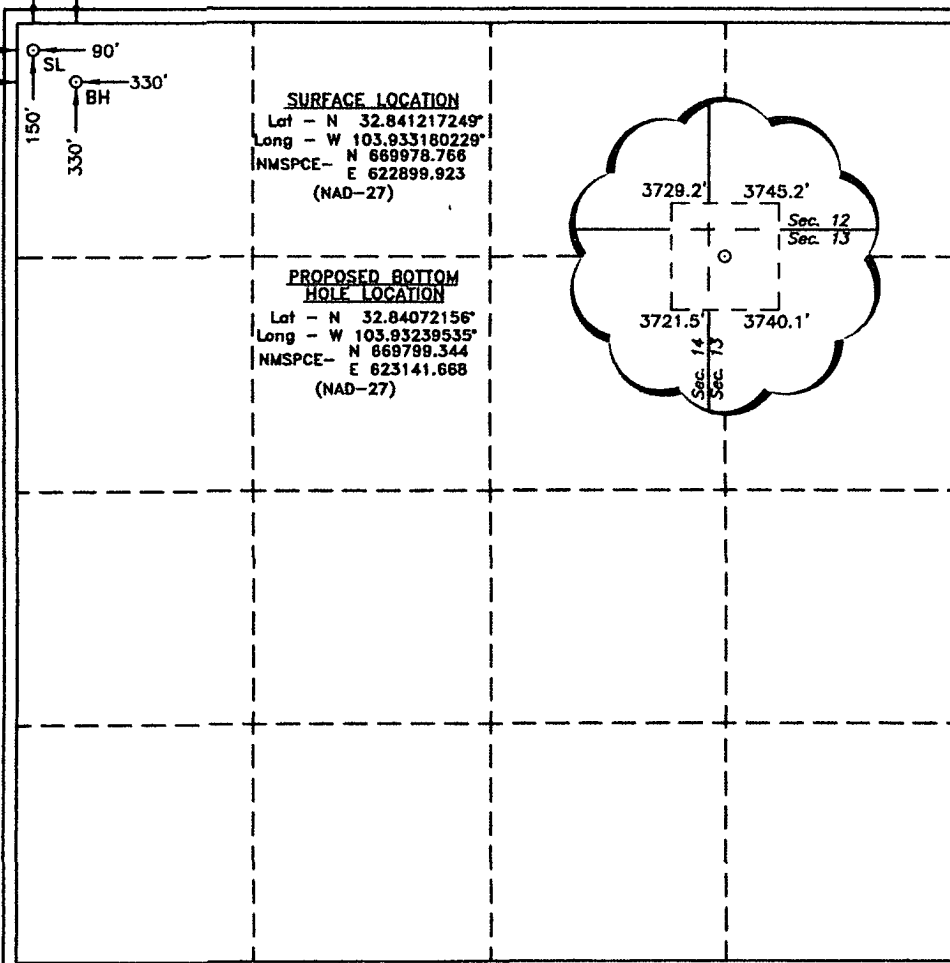
UL or lot No.	Section	Township	Range	Lot Idn	Feet from the	North/South line	Feet from the	East/West line	County
D	13	17 S	30 E		150	NORTH	90	WEST	EDDY

Bottom Hole Location If Different From Surface

UL or lot No.	Section	Township	Range	Lot Idn	Feet from the	North/South line	Feet from the	East/West line	County
D	13	17 S	30 E		330	NORTH	330	WEST	EDDY

Dedicated Acres 40	Joint or Infill	Consolidation Code	Order No.
------------------------------	-----------------	--------------------	-----------

NO ALLOWABLE WILL BE ASSIGNED TO THIS COMPLETION UNTIL ALL INTERESTS HAVE BEEN CONSOLIDATED
OR A NON-STANDARD UNIT HAS BEEN APPROVED BY THE DIVISION



OPERATOR CERTIFICATION

I hereby certify that the information contained herein is true and complete to the best of my knowledge and belief, and that this organization either owns a working interest or undivided mineral interest in the land including the proposed bottom hole location or has a right to drill this well at this location pursuant to a contract with an owner of such a mineral or working interest, or to a voluntary pooling agreement or a compulsory pooling order heretofore entered by the Division.

Barry W. Hunt 11/29/11
Signature Date

Barry W. Hunt
Printed Name

Email Address

SURVEYOR CERTIFICATION

I hereby certify that the well location shown on this plat was plotted from field notes of actual surveys made by me or under my supervision and that the same is true and correct to the best of my belief.

GARY L. JONES
Date Surveyed
Signature & Seal of Professional Surveyor

GARY L. JONES
Professional Surveyor
11/29/11

Certificate No. Gary L. Jones 7977

Basin Surveys 24418