

☐ AMENDED REPORT

District I
1625 N. French Dr., Hobbs, NM 88240

District II
1301 W. Grand Avenue, Artesia, NM 88210

District III
1000 Rio Brazos Rd., Aztec, NM 87410

District IV
1220 S St Francis Dr., Santa Fe, NM 87505

State of New Mexico
Energy, Minerals & Natural Resources Department
OIL CONSERVATION DIVISION
1220 South St. Francis Dr.
Santa Fe, NM 87505

¹ API Number 30-015-40216	² Pool Code 49622	³ Pool Name PARKWAY; BONE SPRING
⁴ Property Code 38434	⁵ Property Name TURQUOISE PWU 27	⁶ Well Number 4H
⁷ OGRID No. 6137	⁸ Operator Name DEVON ENERGY PRODUCTION COMPANY, L.P.	⁹ Elevation 3300.5

UL or lot no.	Section	Township	Range	Lot Idn	Feet from the	North/South line	Feet from the	East/West line	County
M	27	19 S	29 E		340	SOUTH	340	WEST	EDDY

UL or lot no.	Section	Township	Range	Lot ldn	Feet from the	North/South line	Feet from the	East/West line	County
P	27	19 S	29 E		990	SOUTH	340	EAST	EDDY

¹² Dedicated Acres	¹³ Joint or Infill	¹⁴ Consolidation Code	¹⁵ Order No.
160			

No allowable will be assigned to this completion until all interests have been consolidated or a non-standard unit has been approved by the division.

NW CORNER SEC. 27
LAT. = 32.6390370°N
LONG. = 104.0712463°W

NMSP EAST (FT)
N = 596312.05
E = 622012.94

NE CORNER SEC. 27
LAT. = 32.6389396°N
LONG. = 104.0541330°W

NMSP EAST (FT)
N = 596290.05
E = 627280.86

W Q CORNER SEC. 27
LAT. = 32.6317485°N
LONG. = 104.0712904°W

NMSP EAST (FT)
N = 593660.44
E = 622005.89

E Q CORNER SEC. 27
LAT. = 32.6316834°N
LONG. = 104.0541238°W

NMSP EAST (FT)
N = 593650.20
E = 627290.61

SW CORNER SEC. 27
LAT. = 32.6244740°N
LONG. = 104.0713099°W

NMSP EAST (FT)
N = 591013.90
E = 622006.42

BOTTOM OF HOLE
LAT. = 32.6271378°N
LONG. = 104.0552318°W

NMSP EAST (FT)
N = 591995.60
E = 626953.86

TURQUOISE PWU 27-4H
ELEV. = 3300.5'
LAT. = 32.6254046°N (NAD83)
LONG. = 104.0702033°W

NMSP EAST (FT)
N = 591353.30
E = 622346.29

SE CORNER SEC. 27
LAT. = 32.6244132°N
LONG. = 104.0541300°W

NMSP EAST (FT)
N = 591005.28
E = 627295.67

SURFACE LOCATION

17 OPERATOR CERTIFICATION

I hereby certify that the information contained herein is true and complete to the best of my knowledge and belief, and that this organization either owns a working interest or unleased mineral interest in the land including the proposed bottom hole location or has a right to drill this well at this location pursuant to a contract with an owner of such a mineral or working interest, or to a voluntary pooling agreement or a compulsory pooling order heretofore entered by the division

Signature

4/26/2012

Date

Printed Name

REGULATORY SPECIALIST

DAVID H COOK

18 SURVEYOR CERTIFICATION

I hereby certify that the well location shown on this plot was plotted from field notes of actual surveys made by me or under my supervision, and that the same is true and correct to the best of my belief.

FEBRUARY 23, 2012

Date of Survey

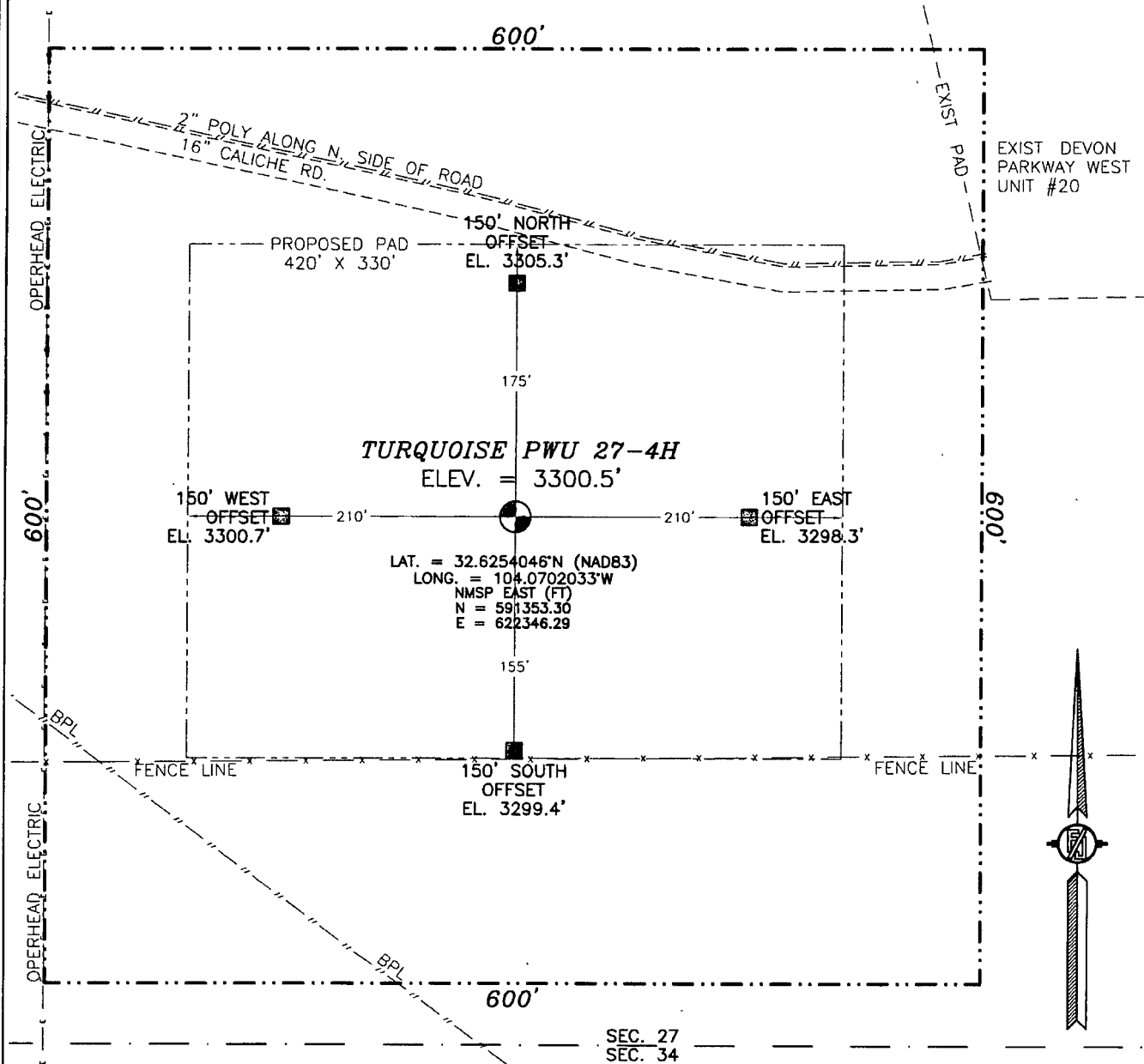
Signature and Seal of Professional Surveyor

Certificate Number

FILMON F. JARAMILLO; FLS 12797

SURVEY NO. 794

SECTION 27, TOWNSHIP 19 SOUTH, RANGE 29 EAST, N.M.P.M.
EDDY COUNTY, STATE OF NEW MEXICO



010 50 100 200

SCALE 1" = 100'

DIRECTIONS TO LOCATION

FROM THE INTERSECTION CR 206 (ILLINOIS CAMP) AND CURRY COMB (CR 235) GO SOUTHEAST ON CR 235 3.1 MILES TO "Y" AT CR 246 (MILLMAN RD.) AND CR 235 TAKE LEFT ON CR 235 GO 8.0 MILES THEN TAKE "Y" RIGHT (SOUTH) ON CALICHE RD GO 1.0 MILES THEN TAKE RIGHT (WEST) 0.25 MILES THEN GO RIGHT ON CALICHE RD. GO 0.9 MI. THEN TAKE LEFT ON ROAD TO PARKWAY WEST UNIT #20 GO 0.15 MILES SITE ABOUT 200 FT SOUTH

DEVON ENERGY PRODUCTION COMPANY, L.P.

TURQUOISE PWU 27-4H

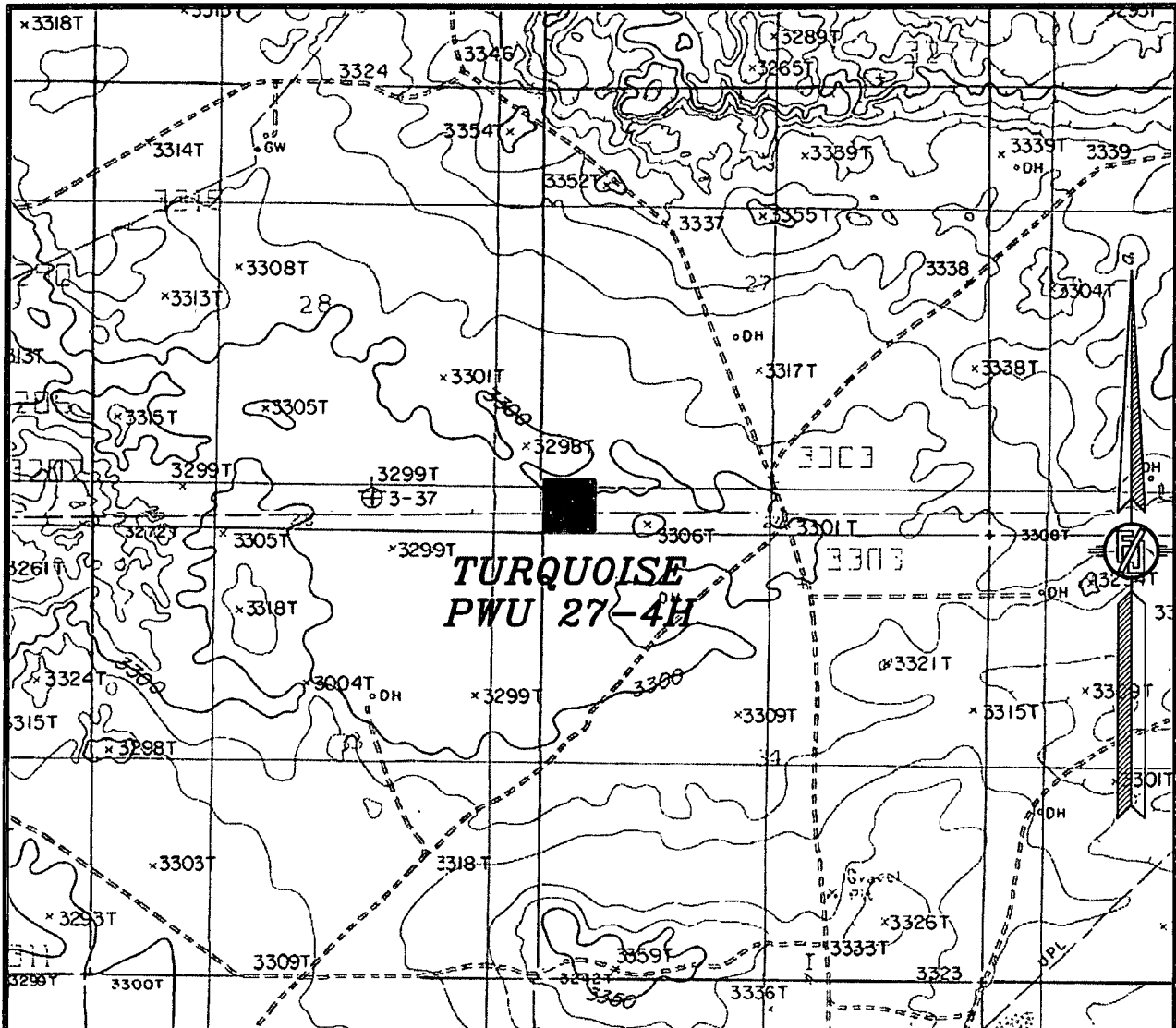
LOCATED 340 FT. FROM THE SOUTH LINE
AND 340 FT. FROM THE WEST LINE OF
SECTION 27, TOWNSHIP 19 SOUTH,
RANGE 29 EAST, N.M.P.M.
EDDY COUNTY, STATE OF NEW MEXICO

FEBRUARY 23, 2012

SURVEY NO. 794

MADRON SURVEYING, INC. 301 SOUTH CANAL (575) 234-3341 CARLSBAD, NEW MEXICO

SECTION 27, TOWNSHIP 19 SOUTH, RANGE 29 EAST, N.M.P.M.
 EDDY COUNTY, STATE OF NEW MEXICO
 LOCATION VERIFICATION MAP



USGS QUAD MAP:
 ILLINOIS CAMP NE

NOT TO SCALE

DEVON ENERGY PRODUCTION COMPANY, L.P.
 TURQUOISE PWU 27-4H

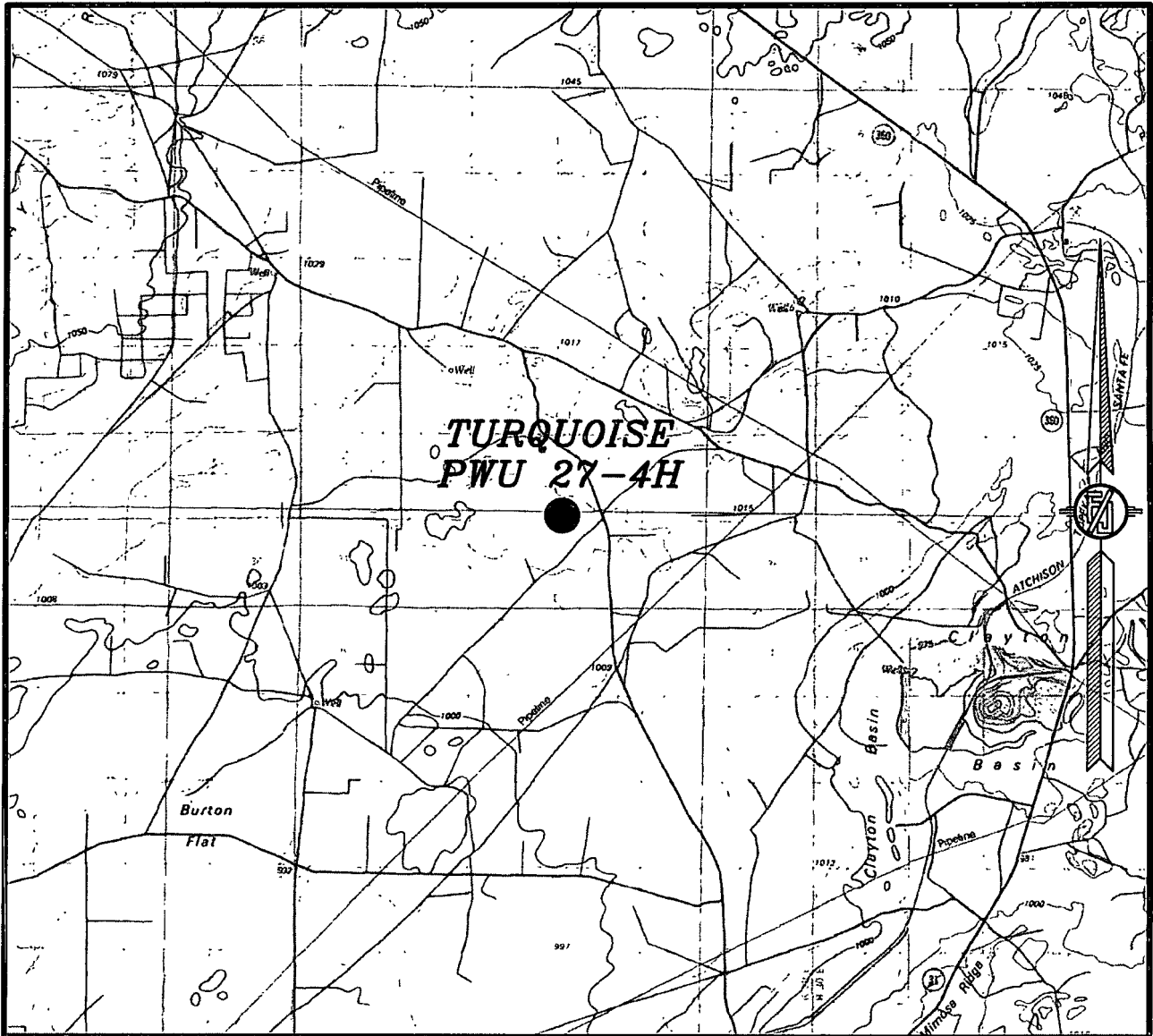
LOCATED 340 FT. FROM THE SOUTH LINE
 AND 340 FT. FROM THE WEST LINE OF
 SECTION 27, TOWNSHIP 19 SOUTH,
 RANGE 29 EAST, N.M.P.M.
 EDDY COUNTY, STATE OF NEW MEXICO

FEBRUARY 23, 2012

SURVEY NO. 794

MADRON SURVEYING, INC. 301 SOUTH CANAL (575) 234-3341 CARLSBAD, NEW MEXICO

SECTION 27, TOWNSHIP 19 SOUTH, RANGE 29 EAST, N.M.P.M.
EDDY COUNTY, STATE OF NEW MEXICO
VICINITY MAP



NOT TO SCALE

DEVON ENERGY PRODUCTION COMPANY, L.P.
TURQUOISE PWU 27-4H

LOCATED 340 FT. FROM THE SOUTH LINE
AND 340 FT. FROM THE WEST LINE OF
SECTION 27, TOWNSHIP 19 SOUTH,
RANGE 29 EAST, N.M.P.M.
EDDY COUNTY, STATE OF NEW MEXICO

FEBRUARY 23, 2012

SURVEY NO. 794

MADRON SURVEYING, INC. 301 SOUTH CANAL (575) 234-3341 CARLSBAD, NEW MEXICO