

District I

1625 N. French Dr., Hobbs, NM 88240

District II

1301 W. Grand Avenue, Artesia, NM 88210

District III

1000 Rio Brazos Rd., Aztec, NM 87410

District IV

1220 S. St. Francis Dr., Santa Fe, NM 87505

RECEIVED

APR 27 2012

NMOC ARTESIA

State of New Mexico

Energy, Minerals & Natural Resources Department

CONSERVATION DIVISION

1220 South St. Francis Dr.

Santa Fe, NM 87505

Form C-102

Revised October 15, 2009

Submit one copy to appropriate

District Office

☐ AMENDED REPORT**WELL LOCATION AND ACREAGE DEDICATION PLAT**

¹ API Number 30-015-40217	² Pool Code 49622	³ Pool Name PARKWAY; BONE SPRING
⁴ Property Code 38555	⁵ Property Name CORAL PWU "28"	
⁷ OGRID No. 6137	⁸ Operator Name DEVON ENERGY PRODUCTION COMPANY, L.P.	
		⁶ Well Number 2H
		⁹ Elevation 3303.7

¹⁰ Surface Location

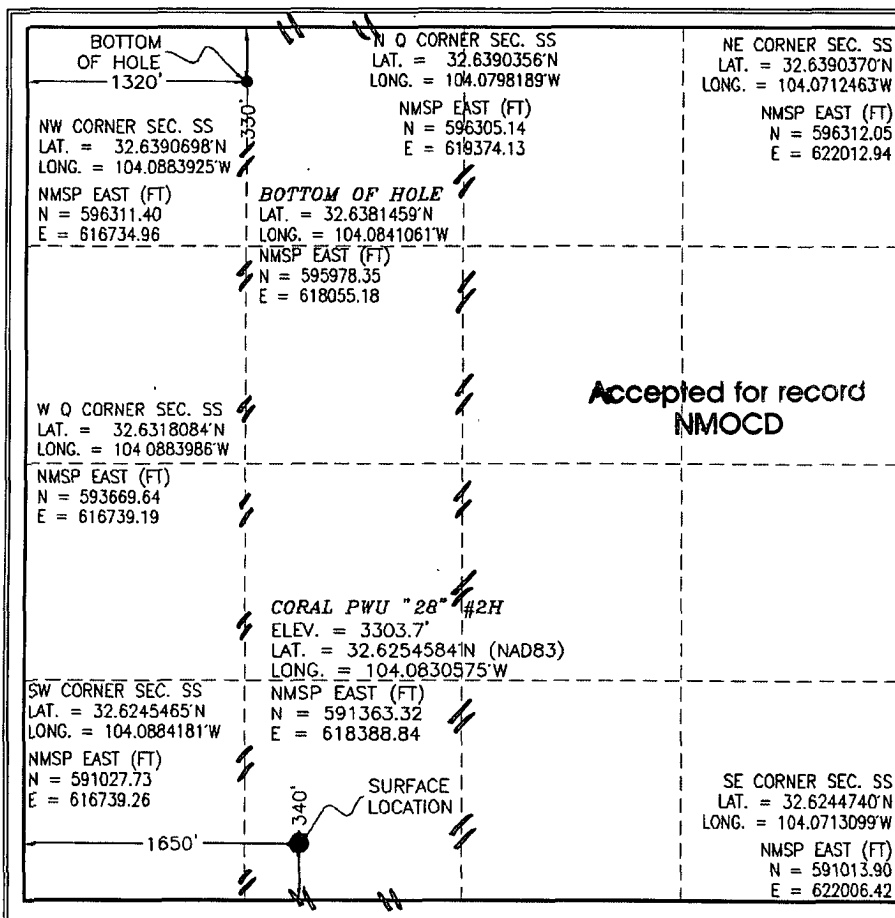
UL or lot no.	Section	Township	Range	Lot Idn	Feet from the	North/South line	Feet from the	East/West line	County
N	28	19 S	29 E		340	SOUTH	1650	WEST	EDDY

¹¹ Bottom Hole Location If Different From Surface

UL or lot no.	Section	Township	Range	Lot Idn	Feet from the	North/South line	Feet from the	East/West line	County
D	28	19 S	29 E		330	NORTH	1320	WEST	EDDY

¹² Dedicated Acres 160	¹³ Joint or Infill	¹⁴ Consolidation Code	¹⁵ Order No.
---	-------------------------------	----------------------------------	-------------------------

No allowable will be assigned to this completion until all interests have been consolidated or a non-standard unit has been approved by the division.

¹⁷ OPERATOR CERTIFICATION

I hereby certify that the information contained herein is true and complete to the best of my knowledge and belief, and that this organization either owns a working interest or unleased mineral interest in the land including the proposed bottom hole location or has a right to drill this well at this location pursuant to a contract with an owner of such a mineral or working interest or to a voluntary pooling agreement or a compulsory pooling order heretofore entered by the division

D.R.
Signature

4/26/2012

Date

Printed Name

DAVID H. COOK

REGULATORY SPECIALIST

¹⁸ SURVEYOR CERTIFICATION

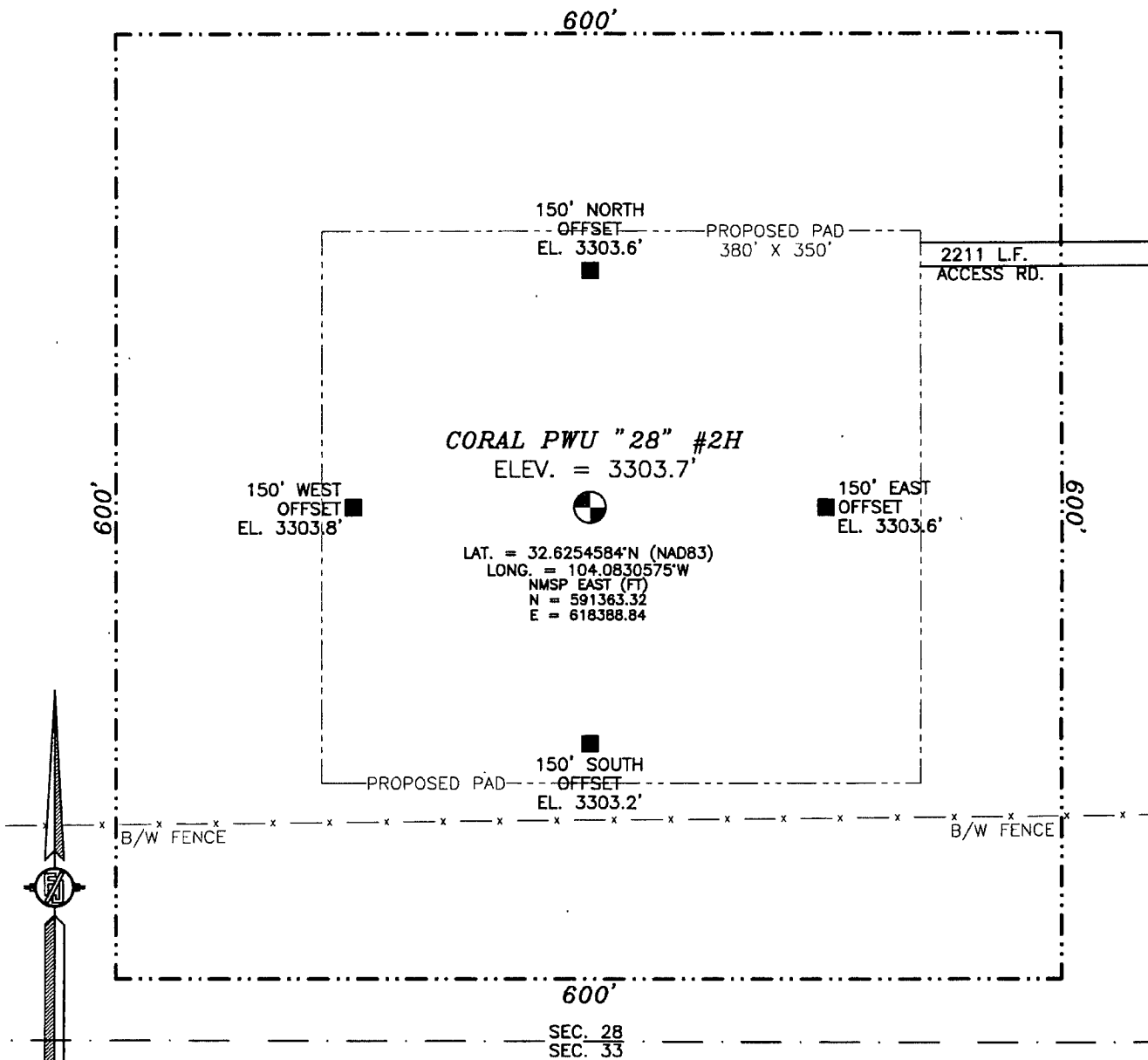
I hereby certify that the well location shown on this plat was plotted from field notes of actual surveys made by me or under my supervision, and that the same is true and correct to the best of my belief.

FEBRUARY 25, 2012

Date of Survey

James H. Chambliss
Signature and Seal of Professional Surveyor
Certificate Number: 12197
FEDERAL LAND SURVEY NO. 796

SECTION 28, TOWNSHIP 19 SOUTH, RANGE 29 EAST, N.M.P.M.
EDDY COUNTY, STATE OF NEW MEXICO



010 50 100 200

SCALE 1" = 100'

DIRECTIONS TO LOCATION

FROM CR. 235 AND CR. 210 GO SOUTHEAST ON 235 0.2 MILES
TURN RIGHT AND GO SOUTH 1.0 MILES BEND RIGHT AND GO WEST
0.25 MILES, TURN LEFT AND GO SOUTHEAST 0.3 MILES TURN RIGHT
AND GO SOUTH 0.7 MILES TURN RIGHT AND GO 200' TO EXISTING
PAD FOR CORAL PWU "28" #4H AND FROM THE NW. CORNER OF PAD
FOLLOW THE PROPOSED ROAD SURVEY FLAGS WEST 288' TO THE NE
CORNER OF PROPOSED PAD FOR CORAL PWU "28" #3H AND FROM
THE NW CORNER OF PAD FOLLOW FLAGS WEST 1523' THE NORTHEAST
CORNER OF PROPOSED PAD FOR CORAL PWU "28" #2H

DEVON ENERGY PRODUCTION COMPANY, L.P.

CORAL PWU "28" #2H

LOCATED 340 FT. FROM THE SOUTH LINE
AND 1650 FT. FROM THE WEST LINE OF
SECTION 28, TOWNSHIP 19 SOUTH,
RANGE 29 EAST, N.M.P.M.
EDDY COUNTY, STATE OF NEW MEXICO

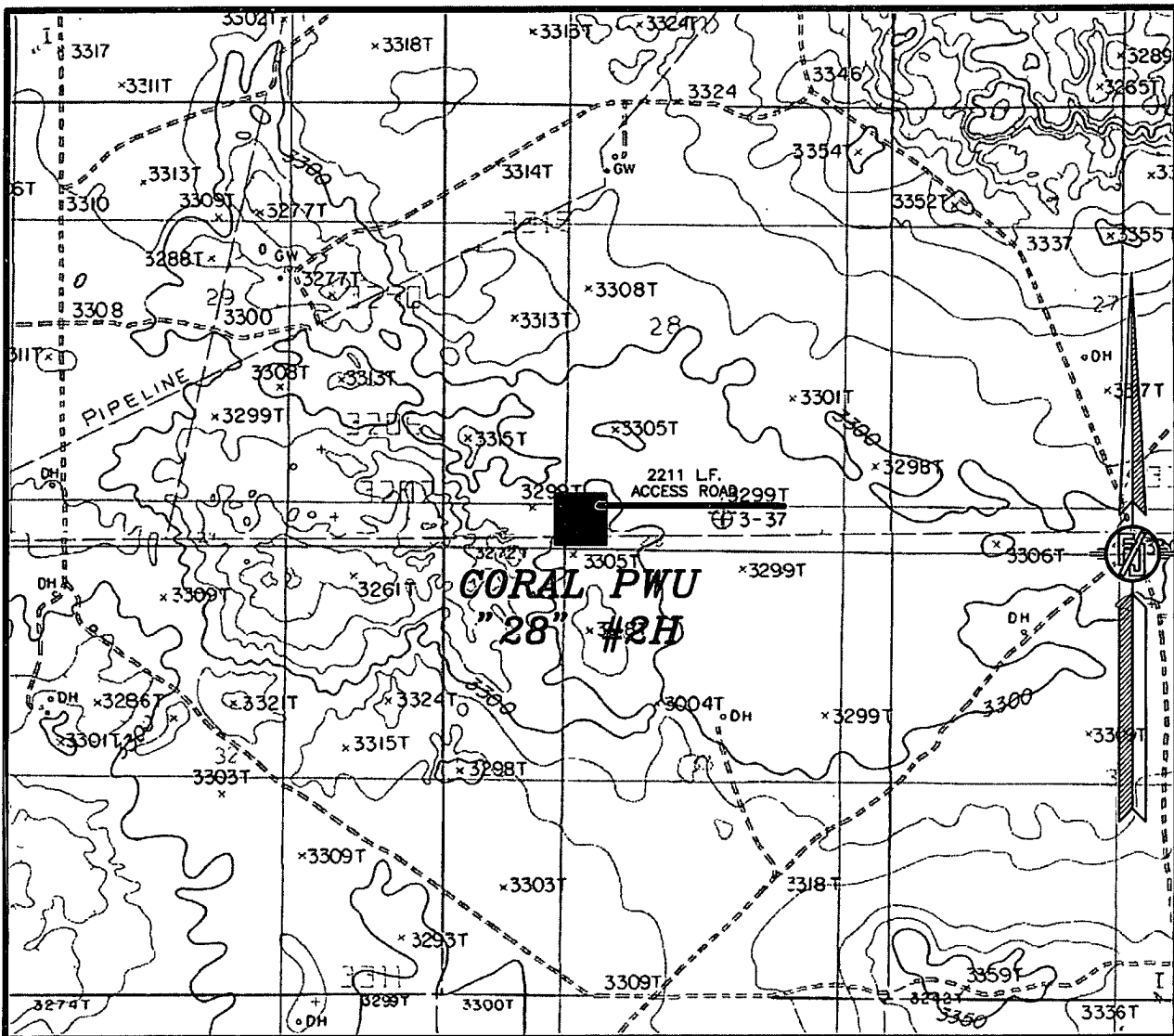
FEBRUARY 25, 2012

SURVEY NO. 796

MADRON SURVEYING, INC.

301 SOUTH CANAL
(575) 234-3341

CARLSBAD, NEW MEXICO



USGS QUAD MAP:
ILLINOIS CAMP NE

NOT TO SCALE

DEVON ENERGY PRODUCTION COMPANY, L.P.

CORAL PWU "28" #2H

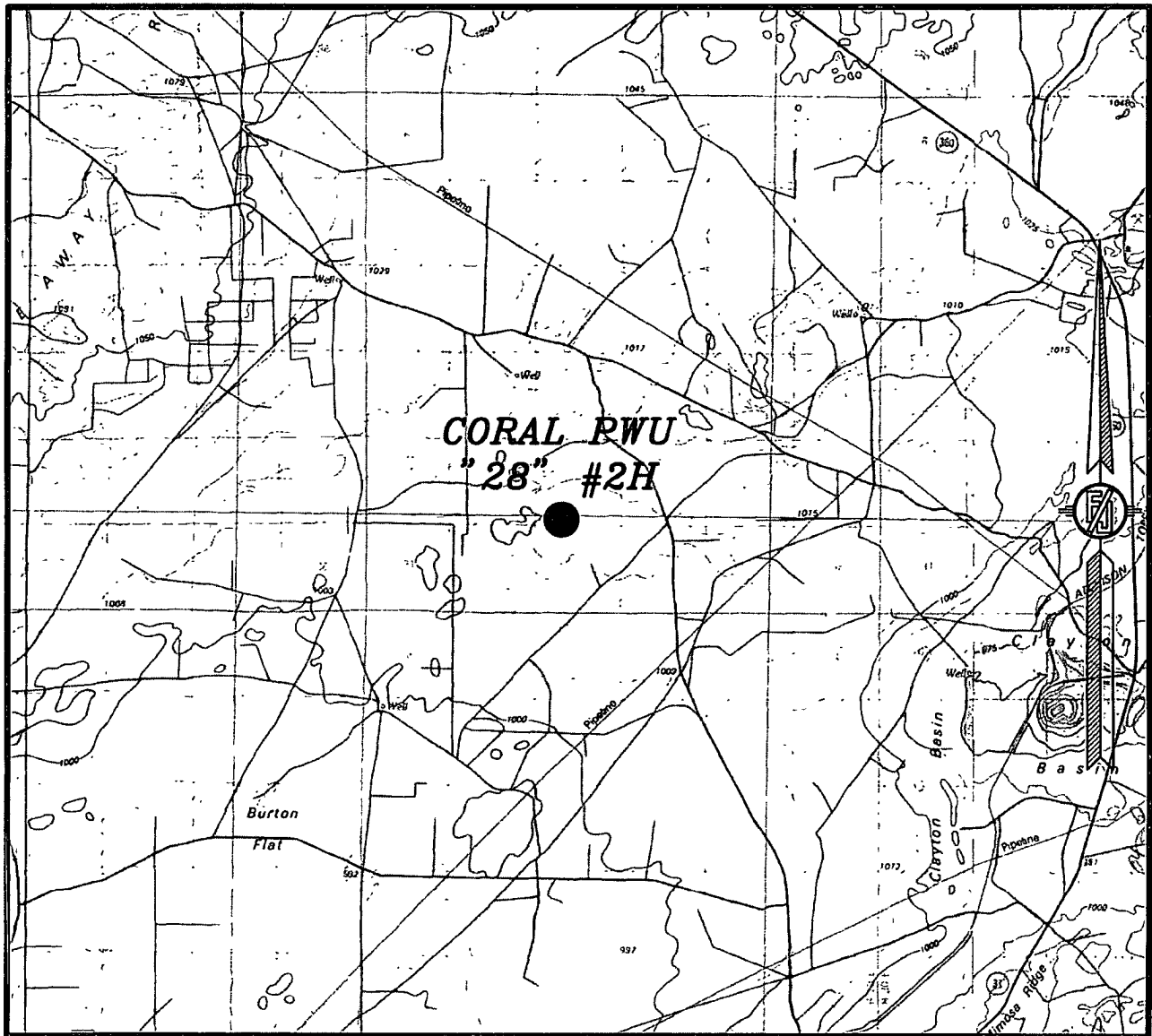
LOCATED 340 FT. FROM THE SOUTH LINE
AND 1650 FT. FROM THE WEST LINE OF
SECTION 28, TOWNSHIP 19 SOUTH,
RANGE 29 EAST, N.M.P.M.
EDDY COUNTY, STATE OF NEW MEXICO

FEBRUARY 25, 2012

SURVEY NO. 796

MADRON SURVEYING, INC. 301 SOUTH CANAL CARLSBAD, NEW MEXICO
(575) 234-3341

SECTION 28, TOWNSHIP 19 SOUTH, RANGE 29 EAST, N.M.P.M.
EDDY COUNTY, STATE OF NEW MEXICO
VICINITY MAP



NOT TO SCALE

DEVON ENERGY PRODUCTION COMPANY, L.P.

CORAL PWU "28" #2H

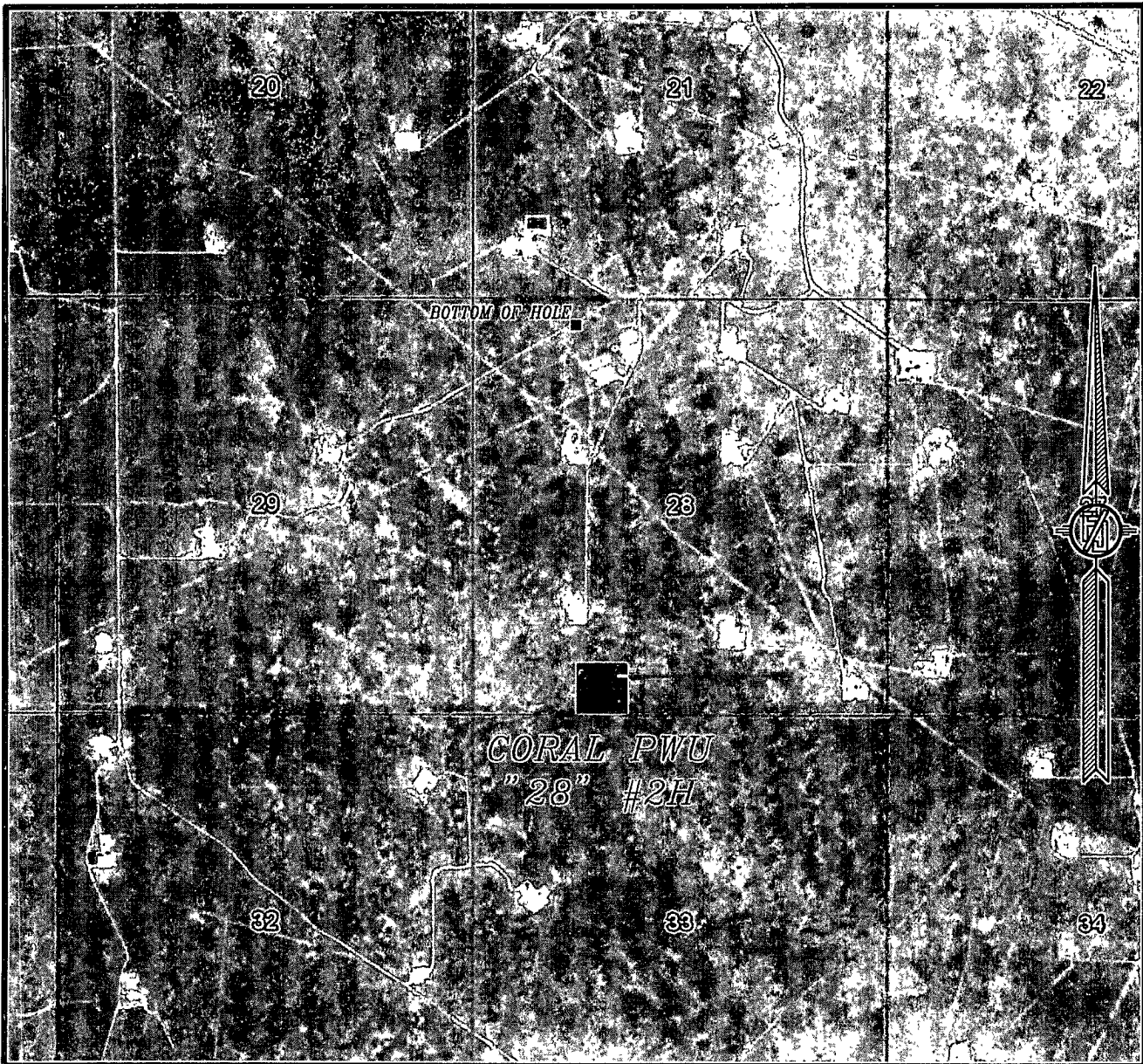
LOCATED 340 FT. FROM THE SOUTH LINE
AND 1650 FT. FROM THE WEST LINE OF
SECTION 28, TOWNSHIP 19 SOUTH,
RANGE 29 EAST, N.M.P.M.
EDDY COUNTY, STATE OF NEW MEXICO

FEBRUARY 25, 2012

SURVEY NO. 796

MADRON SURVEYING, INC. 301 SOUTH CANAL (575) 234-3341 CARLSBAD, NEW MEXICO

SECTION 28, TOWNSHIP 19 SOUTH, RANGE 29 EAST, N.M.P.M.
EDDY COUNTY, STATE OF NEW MEXICO
AERIAL PHOTO



NOT TO SCALE
AERIAL PHOTO:
GOOGLE EARTH
JUNE 2011

DEVON ENERGY PRODUCTION COMPANY, L.P.

CORAL PWU "28" #2H

LOCATED 340 FT. FROM THE SOUTH LINE
AND 1650 FT. FROM THE WEST LINE OF
SECTION 28, TOWNSHIP 19 SOUTH,
RANGE 29 EAST, N.M.P.M.
EDDY COUNTY, STATE OF NEW MEXICO

FEBRUARY 25, 2012

SURVEY NO. 796

MADRON SURVEYING, INC. 301 SOUTH CANAL (575) 234-3341 CARLSBAD, NEW MEXICO