

UNITED STATES DEPARTMENT OF THE INTERIOR BUREAU OF LAND MANAGEMENT

FORM APPROVED OMB No. 1004-0137 Expires: March 31, 2007

SUNDRY NOTICES AND REPORTS ON WELLS

Do not use this form for proposals to drill or to re-enter an abandoned well. Use Form 3160-3 (APD) for such proposals.

SUBMIT IN TRIPLICATE- Other instructions on reverse side.

1. Type of Well Oil Well Gas Well Other

2. Name of Operator EOG Resources, Inc

3a. Address P.O. Box 2267, Midland, TX, 79702

3b. Phone No. (include area code) 432-686-3608

4. Location of Well (Footage, Sec., T., R., M., or Survey Description) Unit Letter M, 800 FSL, 1000 FWL Section 20, Township 26-S, Range 31-E

RECEIVED

APR 04 2005

ODD-ARTESIA

5. Lease Serial No. NM-0437880

6. If Indian, Allottee or Tribe Name

7. If Unit or CA/Agreement, Name and/or No. Phantom Draw Federal

8. Well Name and No. 1

9. API Well No. 615-21346 30-015-3104

10. Field and Pool, or Exploratory Area Phantom Draw Wolfcamp

11. County or Parish, State Eddy, New Mexico

12. CHECK APPROPRIATE BOX(ES) TO INDICATE NATURE OF NOTICE, REPORT, OR OTHER DATA

Table with columns: TYPE OF SUBMISSION, TYPE OF ACTION. Includes checkboxes for Notice of Intent, Subsequent Report, Final Abandonment Notice, and various actions like Acidize, Deepen, Production, etc.

13. Describe Proposed or Completed Operation (clearly state all pertinent details, including estimated starting date of any proposed work and approximate duration thereof. If the proposal is to deepen directionally or recompleate horizontally, give subsurface locations and measured and true vertical depths of all pertinent markers and zones. Attach the Bond under which the work will be performed or provide the Bond No. on file with BLM/BIA. Required subsequent reports shall be filed within 30 days following completion of the involved operations. If the operation results in a multiple completion or recompleation in a new interval, a Form 3160-4 shall be filed once testing has been completed. Final Abandonment Notices shall be filed only after all requirements, including reclamation, have been completed, and the operator has determined that the site is ready for final inspection.)

- 1. Notify BLM 24 hrs prior to MI & RU.
2. RIH w/ws Tag TOF @+- 7000, Spot 45sx Plug 7050-6900 (Stub) WOC Tag.
3. Displace hole W/MLF, 9.5 # Brine W/25 # gel P/BBL.
4. Spot 60sx plug 3950-3800 (13 3/8 Shoe) WOC Tag.
5. Spot 100sx plug 1000-750 (20 Shoe T-Salt) WOC Tag.
6. Spot 100sx plug 300-Surf (Surf) WOC Tag.
7. Install Dry Hole Marker.

14. I hereby certify that the foregoing is true and correct Name (Printed/Typed)

Jimmy Bagley

Title

Consultant

Signature

Date

3/29/05

THIS SPACE FOR FEDERAL OR STATE OFFICE USE

Approved by

(ORIG. SGD.) ALEXIS C. SWOBODA

PETROLEUM ENGINEER

Date

MAR 31 2005

Conditions of approval, if any, are attached. Approval of this notice does not warrant or certify that the applicant holds legal or equitable title to those rights in the subject lease which would entitle the applicant to conduct operations thereon.

Office

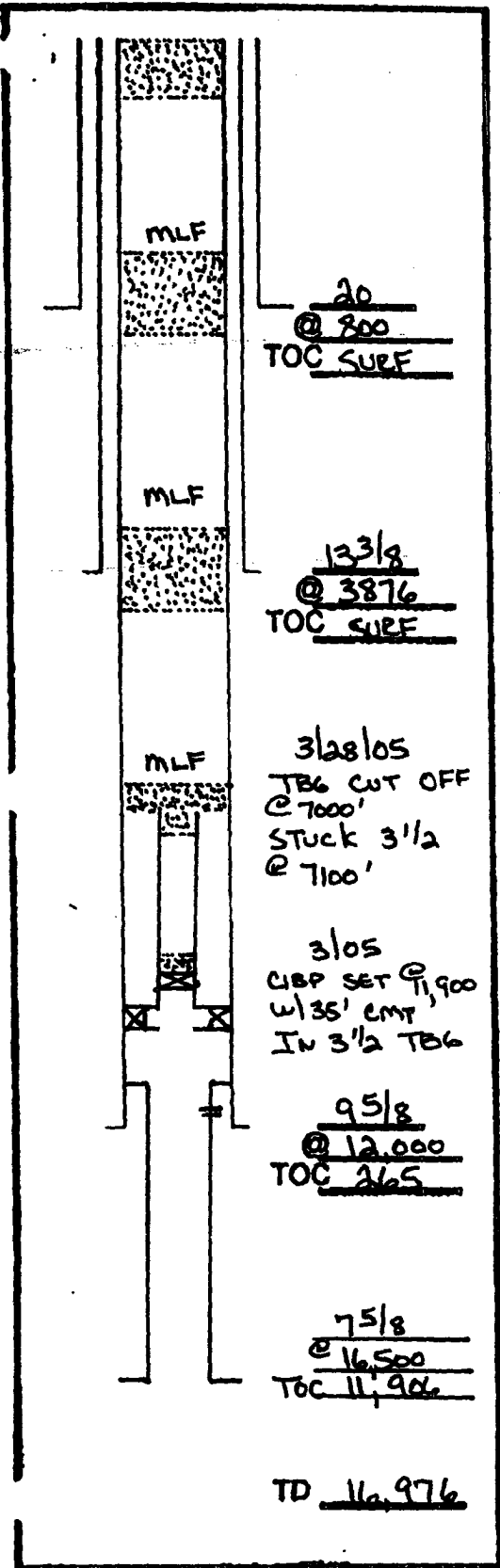
RFO

Title 18 U.S.C. Section 1001 and Title 43 U.S.C. Section 1212, make it a crime for any person knowingly and willfully to make to any department or agency of the United States any false, fictitious or fraudulent statements or representations as to any matter within its jurisdiction.

(Instructions on page 2)

PLUGGING & ABANDONMENT WORKSHEET (3 STRING CSNG)

OPERATOR EOG RESOURCES INC.
 LEASENAME PHANTOM DEW UNIT
 WELL # 1
 SECT 20 TWN 26-S RNG 31-E
 FROM 800 N/S/L 1000 E/W/L
 TD: 11,976 FORMATION @ TD Mallow
 PBTD: _____ FORMATION @ PBTD WOIFCAMP



	SIZE	SET @	TOC	TOC DETERMINED BY	
SURFACE	20	800	SURF	CIRC	
INTMED 1	13 3/8	3876	SURF	CIRC	
INTMED 2					
PROD	9 5/8	12,000	265	T.S.	
	SIZE	TOP	BOT	TOC	DETERMINED BY
LINER 1	7 5/8	11,906	16,500	11,906	CIRC
LINER 2					
	CUT & PULL @		TOP - BOTTOM		
INTMED 1			PERFS	12,451 - 12,728	
INTMED 2			OPENSOLE	-	
PROD					

*** REQUIRED PLUGS DISTRICT I**

NESTLER (AMT)
VATES
QUEBY
GRAYSBURG
SAH ANDRUS
CAPTAN LEBE
DELAWARE
BELL CANYON
CHERRY CANYON
BURBY CANYON
BONE SPRING
FLORIDA
GLONERRY
FLOR
ORDEARD
ARO
WC
PENN
STRAWN
AYREA
MAGEROW
SON
DEYCHIAN

PLUG	TYPE	BACKS	DEPTH
PLUG	PLUG	CMNT	
NO SAMPLES			
PLUG #1 OH 25 SXS 9850'			
PLUG #2 SHOE 50 SXS 8700'-8800'			
PLUG #3 CIBP/35' 5300'			
PLUG #4 CIBP 25 SXS 5300'			
PLUG #5 STUB 50 SXS 4600'-4700'			
PLUG #6 RETNR SQZ 200 SXS 400'			
PLUG #7 SURF 10 SXS 0-10'			
PLUG #8 STUB 45 7050'			
PLUG #9 13 3/8 S 60 3950'			
PLUG #10 20 SHOE 100 1000'			
PLUG #11 SURF 100 300'			
PLUG #12			
PLUG #13			
PLUG #14			
PLUG #15			
PLUG #16			
PLUG #17			
PLUG #18			
PLUG #19			
PLUG #20			
PLUG #21			
PLUG #22			
PLUG #23			
PLUG #24			
PLUG #25			
PLUG #26			
PLUG #27			
PLUG #28			
PLUG #29			
PLUG #30			