

RECEIVED
JUL 12 2012

RECEIVED
JUL 12 2012
NMOCD ARTESIA

DISTRICT I
1525 N. French Dr., Hobbs, NM 88240
Phone (505) 392-6161 Fax (505) 392-0720

DISTRICT II
1501 W. Grand Avenue, Artesia, NM 88210
Phone (505) 748-1203 Fax (505) 748-0720

DISTRICT III
1000 Rio Brazos Rd., Aztec, NM 87410
Phone (505) 334-6178 Fax (505) 334-6170

DISTRICT IV
1880 S. St. Francis Dr., Santa Fe, NM 87506
Phone (505) 476-3400 Fax (505) 476-3462

NMOCD ARTESIA

State of New Mexico
Energy, Minerals and Natural Resources Department

Form C-102
Revised August 1, 2011
Submit one copy to appropriate
District Office

OIL CONSERVATION DIVISION
1220 South St. Francis Dr.
Santa Fe, New Mexico 87505

WELL LOCATION AND ACREAGE DEDICATION PLAT

☐ AMENDED REPORT

API Number 30-015-39735	Pool Code 47545	Pool Name Nash Draw; Delaware-Bone Spring Avalon Sd
Property Code 38958	Property Name CANYON "BJK" STATE COM	Well Number 2H
OGRID No. 025575	Operator Name YATES PETROLEUM CORP.	Elevation 3189'

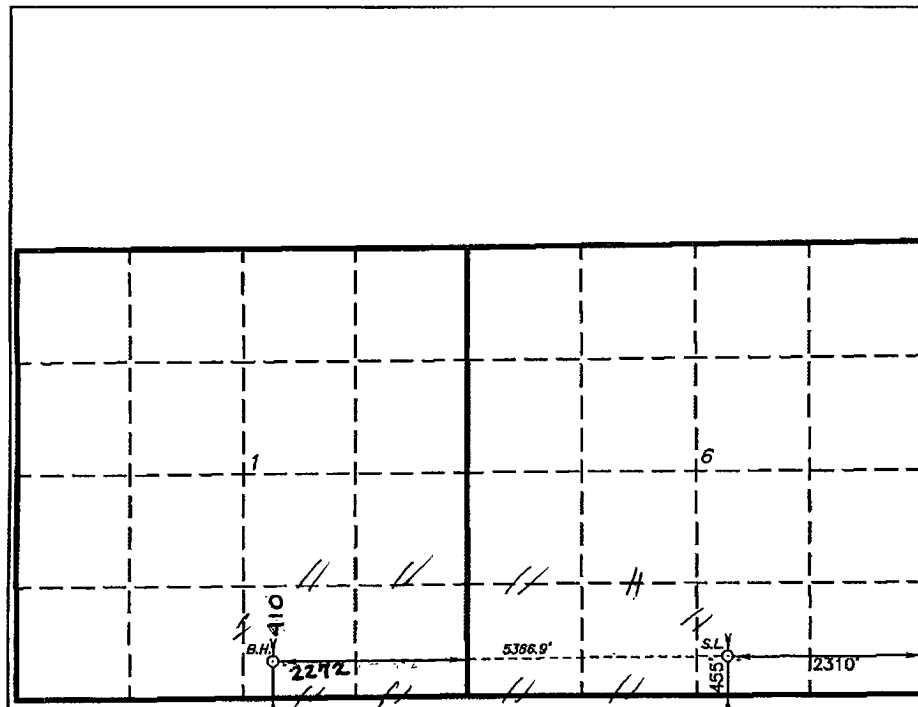
Surface Location

UL or lot No.	Section	Township	Range	Lot Idn	Feet from the	North/South line	Feet from the	East/West line	County
0	6	25 S	30 E		455	SOUTH	2310	EAST	EDDY

Bottom Hole Location If Different From Surface

UL or lot No.	Section	Township	Range	Lot Idn	Feet from the	North/South line	Feet from the	East/West line	County
0	1	25 S	29 E		410	SOUTH	2272	EAST	EDDY
Dedicated Acres 160	Joint or Infill	Consolidation Code	Order No.						

NO ALLOWABLE WILL BE ASSIGNED TO THIS COMPLETION UNTIL ALL INTERESTS HAVE BEEN CONSOLIDATED
OR A NON-STANDARD UNIT HAS BEEN APPROVED BY THE DIVISION



PROPOSED BOTTOM
HOLE LOCATION
Lat - N 32°09'11.44"
Long - W 103°56'12.85"
NMSPCE- N 419687.202
E 664021.775
(NAD-83)

SURFACE LOCATION
Lat - N 32°09'11.87"
Long - W 103°55'10.42"
NMSPCE- N 419750.85
E 669388.78
(NAD-83)

OPERATOR CERTIFICATION

I hereby certify that the information contained herein is true and complete to the best of my knowledge and belief, and that this organization either owns a working interest or unleased mineral interest in the land including the proposed bottom hole location or has a right to drill this well at this location pursuant to a contract with an owner of such a mineral or working interest, or to a voluntary pooling agreement or a compulsory pooling order heretofore entered by the division.

Tina Huerta 7/11/12
Signature Date
Tina Huerta
Printed Name
tinah@yatespetroleum.com
Email Address

SURVEYOR CERTIFICATION

I hereby certify that the well location shown on this plat was plotted from field notes of actual surveys made by me or under my supervision and that the same is true and correct to the best of my belief.

NOVEMBER 12, 2011
Date Surveyed
Signature of Surveyor
Professional Surveyor
7977
Certificate No. Gary L. Jones 7977
BASIN SURVEYS 25593