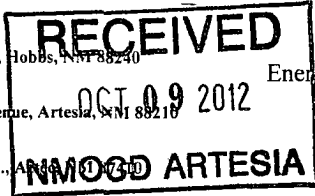


District I
1625 N. French Dr., Hobbs, NM 88240
District II
1301 W. Grand Avenue, Artesia, NM 88210
District III
1000 Rio Brazos Rd., Artesia, NM 88210
District IV
1220 S. St. Francis Dr., Santa Fe, NM 87505



State of New Mexico
Energy, Minerals & Natural Resources Department
OIL CONSERVATION DIVISION
1220 South St. Francis Dr.
Santa Fe, NM 87505

Form C-102
Revised October 15, 2009
Submit one copy to appropriate
District Office
 AMENDED REPORT

WELL LOCATION AND ACREAGE DEDICATION PLAT

As Drilled

¹ API Number 30-015-38432	² Pool Code 96757	³ Pool Name Cotton Draw Delaware; South
⁴ Property Code 300635	⁵ Property Name COTTON DRAW UNIT	
⁷ OGRID No. 6137	⁸ Operator Name DEVON ENERGY PRODUCTION COMPANY, L.P.	⁶ Well Number 160H
		⁹ Elevation 3463.1

¹⁰ Surface Location

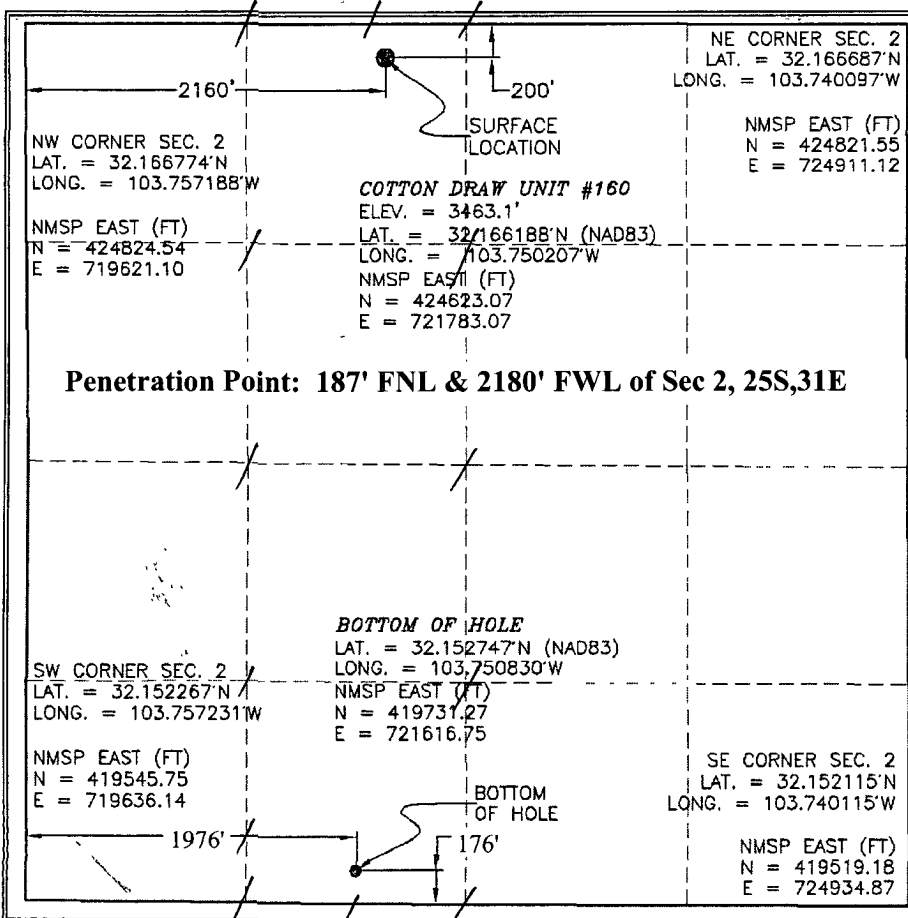
UL or lot no.	Section	Township	Range	Lot Idn	Feet from the	North/South line	Feet from the	East/West line	County
C	2	25 S	31 E		200	NORTH	2160	WEST	EDDY

¹¹ Bottom Hole Location If Different From Surface

UL or lot no.	Section	Township	Range	Lot Idn	Feet from the	North/South line	Feet from the	East/West line	County
N	2	25 S	31 E		176	SOUTH	1976	WEST	EDDY

¹² Dedicated Acres 159.88	¹³ Joint or Infill	¹⁴ Consolidation Code	¹⁵ Order No.
--	-------------------------------	----------------------------------	-------------------------

No allowable will be assigned to this completion until all interests have been consolidated or a non-standard unit has been approved by the division.



¹⁷ OPERATOR CERTIFICATION
I hereby certify that the information contained herein is true and complete to the best of my knowledge and belief, and that this organization either owns a working interest or unleased mineral interest in the land including the proposed bottom hole location or has a right to drill this well at this location pursuant to a contract with an owner of such a mineral or working interest, or to a voluntary pooling agreement or a compulsory pooling order heretofore entered by the division

Patti Ricchers 10/08/2012
Signature Date

Printed Name
Patti Ricchers, Regulatory Specialist

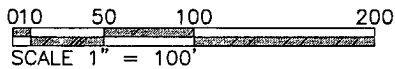
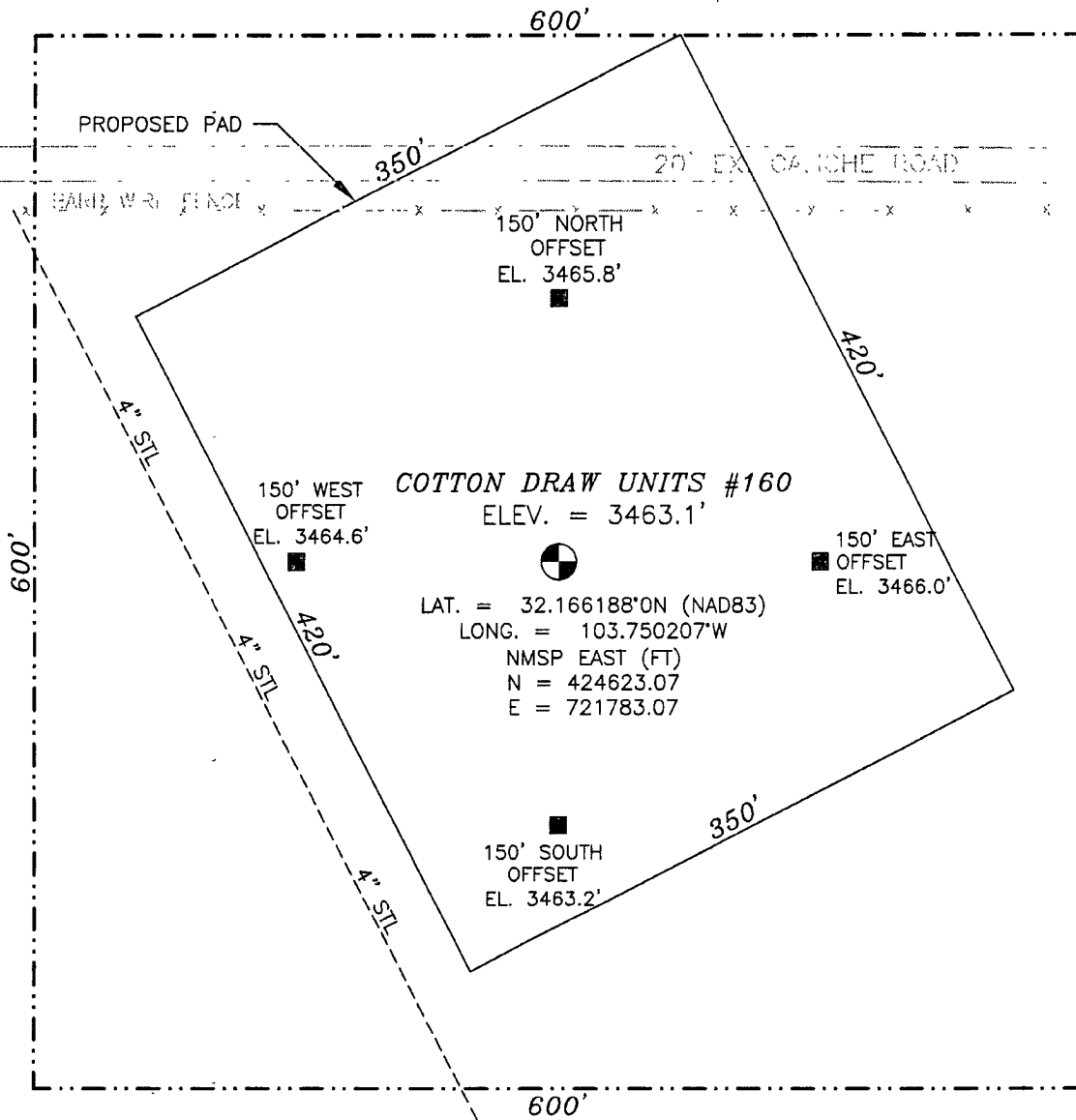
¹⁸ SURVEYOR CERTIFICATION
I hereby certify that the well location shown on this plat was plotted from field notes of actual surveys made by me or under my supervision, and that the same is true and correct to the best of my belief

NOVEMBER 2012
Date of Survey

[Signature]
Signature and Seal of Professional Surveyor

Certificate Number: ELLIOTT STARANILLO, PLS 12797
SURVEY NO. 352

SECTION 2, TOWNSHIP 25 SOUTH, RANGE 31 EAST, N.M.P.M.
 EDDY COUNTY, STATE OF NEW MEXICO



DIRECTIONS TO LOCATION
 FROM CR 786 AND CR 791, GO SOUTH ON 791 3.1 MILES, TURN LEFT AND GO EAST 1.9 MILES, TURN LEFT AND GO NORTH 0.7 MILES, TURN LEFT AND GO WEST 0.3 MILES, TURN RIGHT AND GO NORTH 0.4 MILES, TURN LEFT AND GO WEST 1,400' AND LOCATION IS ON THE LEFT (SOUTH) 230'.

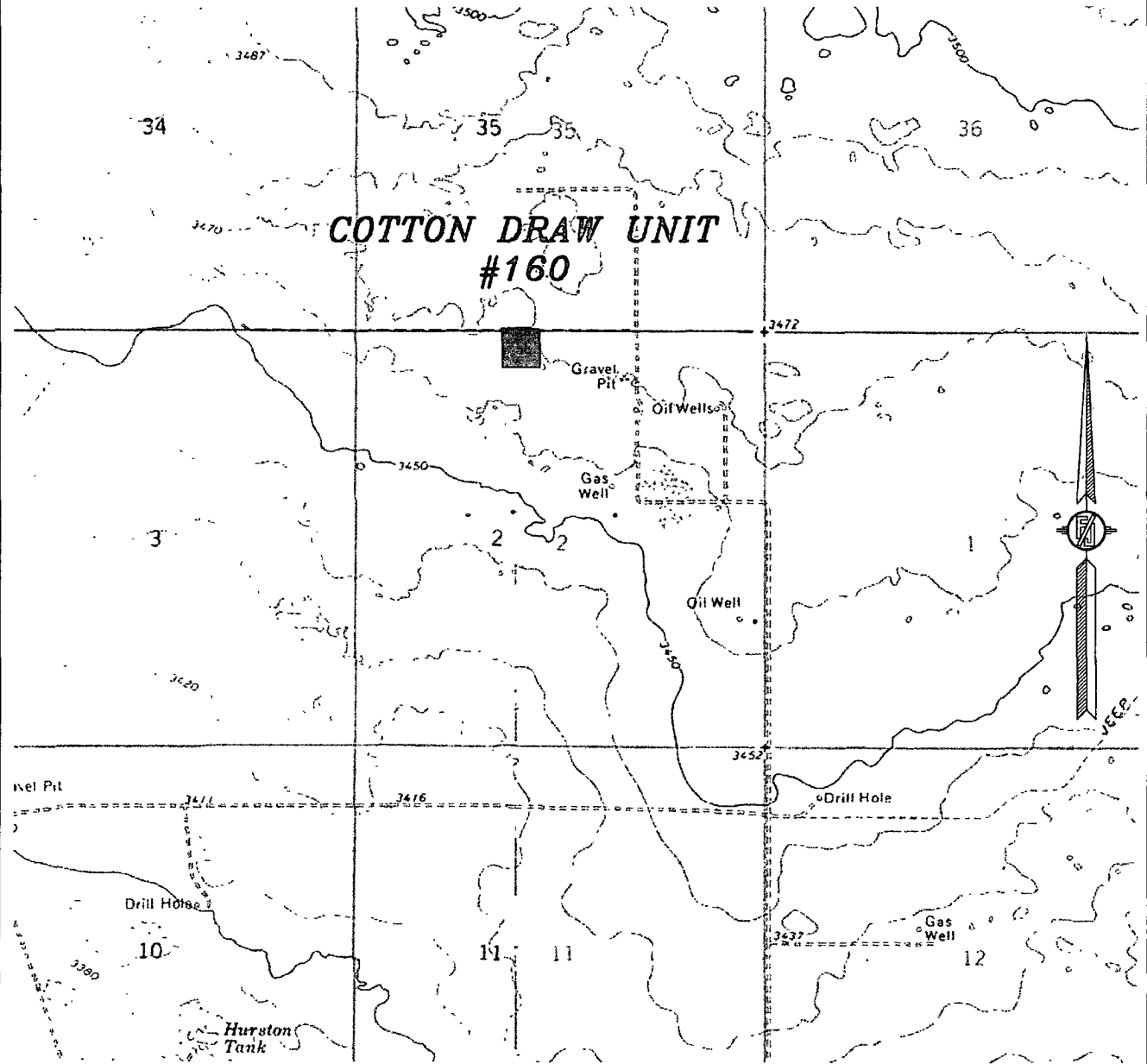
DEVON ENERGY PRODUCTION COMPANY, L.P.
COTTON DRAW UNIT #160
 LOCATED 200 FT. FROM THE NORTH LINE
 AND 2,160 FT. FROM THE WEST LINE OF
 SECTION 2, TOWNSHIP 25 SOUTH,
 RANGE 31 EAST, N.M.P.M.
 EDDY COUNTY, STATE OF NEW MEXICO

NOVEMBER 24, 2010

SURVEY NO. 332

MADRON SURVEYING, INC. 301 SOUTH CANAL CARLSBAD, NEW MEXICO
 (575) 887-5830

SECTION 2, TOWNSHIP 25 SOUTH, RANGE 31 EAST, N.M.P.M.
 EDDY COUNTY, STATE OF NEW MEXICO
LOCATION VERIFICATION MAP



CONTOUR INTERVAL
 PADUCA BREAKS NW,
 BIG SINKS

DEVON ENERGY PRODUCTION COMPANY, L.P.
COTTON DRAW UNIT #160
 LOCATED 200 FT. FROM THE NORTH LINE
 AND 2,160 FT. FROM THE WEST LINE OF
 SECTION 2, TOWNSHIP 25 SOUTH,
 RANGE 31 EAST, N.M.P.M.
 EDDY COUNTY, STATE OF NEW MEXICO

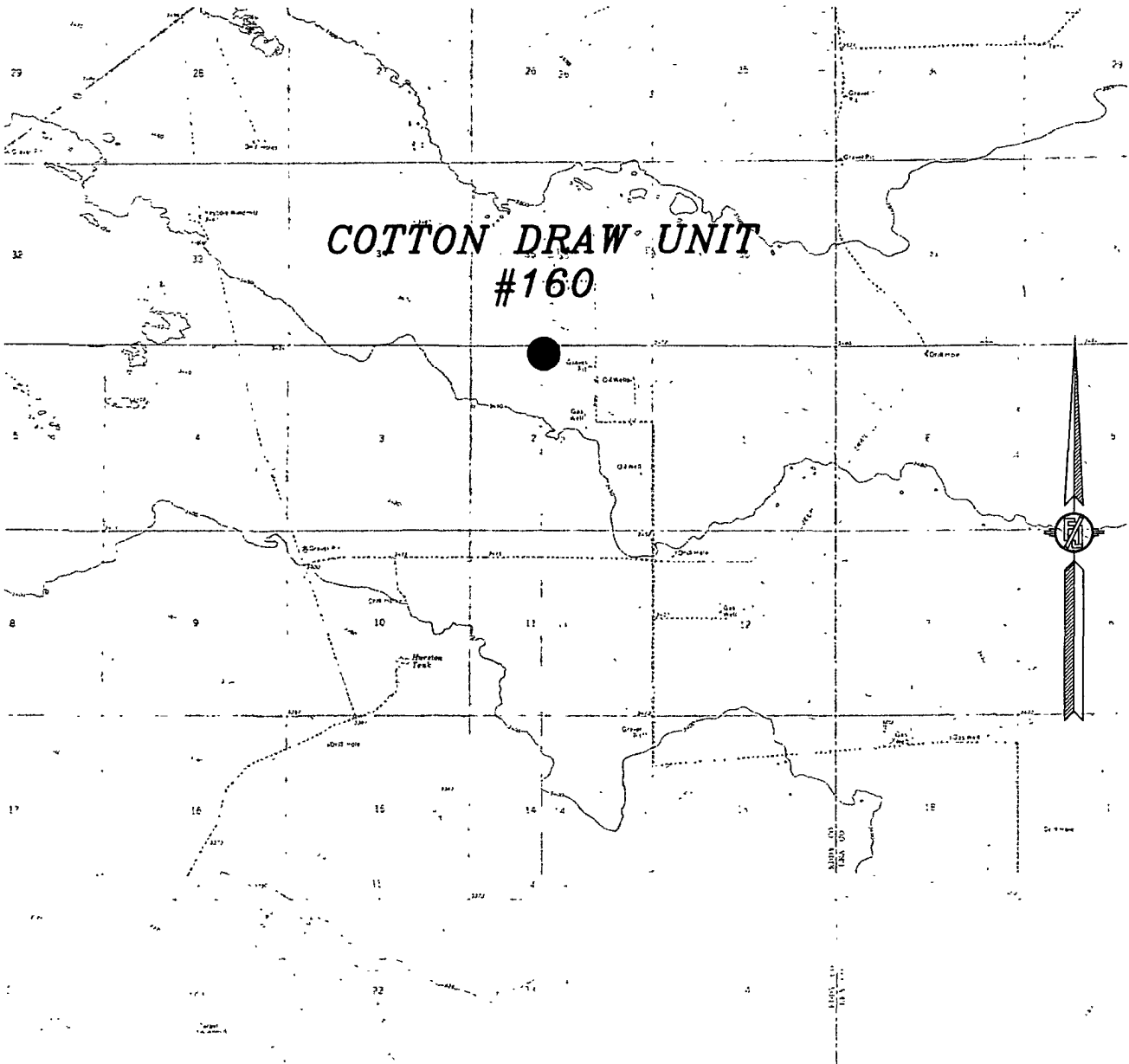
NOT TO SCALE

NOVEMBER 24, 2010

SURVEY NO. 332

MADRON SURVEYING, INC. 301 SOUTH CANAL CARLSBAD, NEW MEXICO
 (575) 887-5830

SECTION 2, TOWNSHIP 25 SOUTH, RANGE 31 EAST, N.M.P.M.
EDDY COUNTY, STATE OF NEW MEXICO
VICINITY MAP



DEVON ENERGY PRODUCTION COMPANY, L.P.
COTTON DRAW UNIT #160
LOCATED 200 FT. FROM THE NORTH LINE
AND 2,160 FT. FROM THE WEST LINE OF
SECTION 2, TOWNSHIP 25 SOUTH,
RANGE 31 EAST, N.M.P.M.
EDDY COUNTY, STATE OF NEW MEXICO

NOT TO SCALE

NOVEMBER 24, 2010

SURVEY NO. 332

MADRON SURVEYING, INC. 301 SOUTH CANAL CARLSBAD, NEW MEXICO
(575) 887-5830