

30-015-22958

This form is not to be used  
For reporting Packer Leakage  
Test in Northwest New Mexico

NEW MEXICO OIL CONSERVATION DIVISION  
SOUTHEAST NEW MEXICO PACKER LEAKAGE TEST

Revised June 9, 2003

Operator Murchison Oil & Gas Lease Maralo Federal Well No. 1  
Location Of Well: Unit \_\_\_\_\_ Section 22 Township T17S Range R27E County Eddy

	Name of Reservoir or Pool	Type of Prod. (Oil or Gas)	Method of Prod. (Flow Art. Lift)	Prod. Medium (Tbg. Or Cag.)	Choke Size
Upper Completion	Atoka	None	None	CSG	
Lower Completion	Morrow	Gas	Flow	TBG	

**FLOW TEST NO. 1**

Both zones shut-in at (hour, date): 10/10/2012 11:20am

Well opened at (hour, date): 10/11/2012 10:55am

Indicate by (X) the zone producing..... Upper Completion Lower Completion

Pressure at beginning of test..... 1427# 140#

Stabilized? (Yes or No)..... Yes Yes

Maximum pressure during test..... 1436# 140#

Minimum pressure during test..... 1415# 30#

Pressure at conclusion of test..... 1420# 30#

Pressure change during test (Maximum minus Minimum)..... 21# 110#

Was pressure change an increase or a decrease?..... Decrease Decrease

Well closed at (hour, date): 10/12/2012 10:20am Total Time On Production 23 hours 25 minutes

Oil Production \_\_\_\_\_ Gas Production \_\_\_\_\_

During Test: 0 bbls; Grav. \_\_\_\_\_; During Test 122.7 MCF; GOR \_\_\_\_\_

Remarks: Atoka is not hooked up or produced

**FLOW TEST NO. 2**

Both zones shut-in at (hour, date): \_\_\_\_\_

Well opened at (hour, date): \_\_\_\_\_

Indicate by (X) the zone producing..... Upper Completion Lower Completion

Pressure at beginning of test..... \_\_\_\_\_

Stabilized? (Yes or No)..... \_\_\_\_\_

Maximum pressure during test..... \_\_\_\_\_

Minimum pressure during test..... \_\_\_\_\_

Pressure at conclusion of test..... \_\_\_\_\_

Pressure change during test (Maximum minus Minimum)..... \_\_\_\_\_

Was pressure change an increase or a decrease?..... \_\_\_\_\_

Well closed at (hour, date): \_\_\_\_\_ Total Time On Production \_\_\_\_\_

Oil Production \_\_\_\_\_ Gas Production \_\_\_\_\_

During Test: \_\_\_\_\_ bbls; Grav. \_\_\_\_\_; During Test \_\_\_\_\_ MCF; GOR \_\_\_\_\_

Remarks: \_\_\_\_\_

I hereby certify that the information herein contained is true and complete to the best of my knowledge.

Approved \_\_\_\_\_ 20 \_\_\_\_\_  
New Mexico Oil Conservation Division

Operator Wildcat Measurement Service, Inc.

By [Signature]

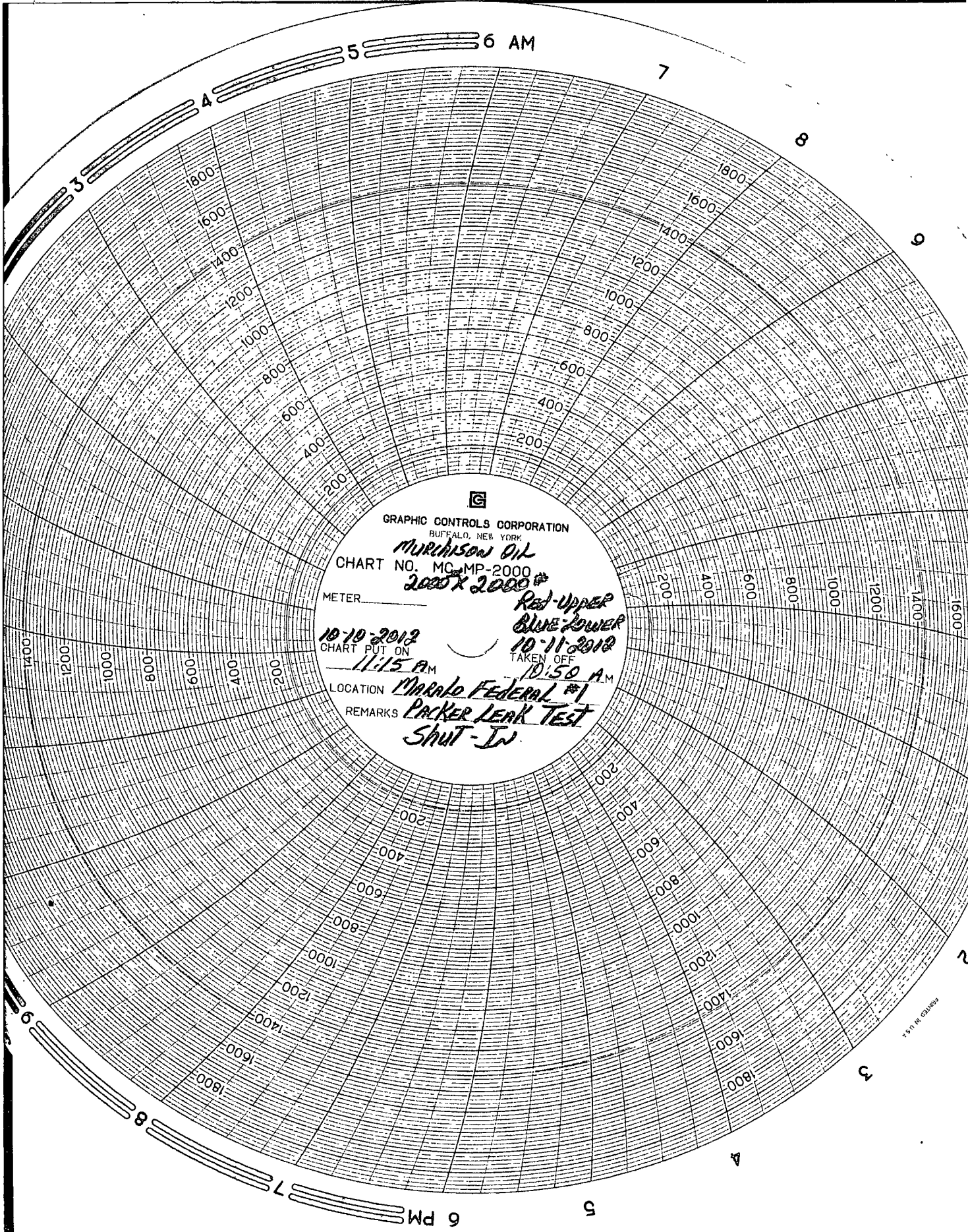
By Accepted for record

Title Don Norman/Technician

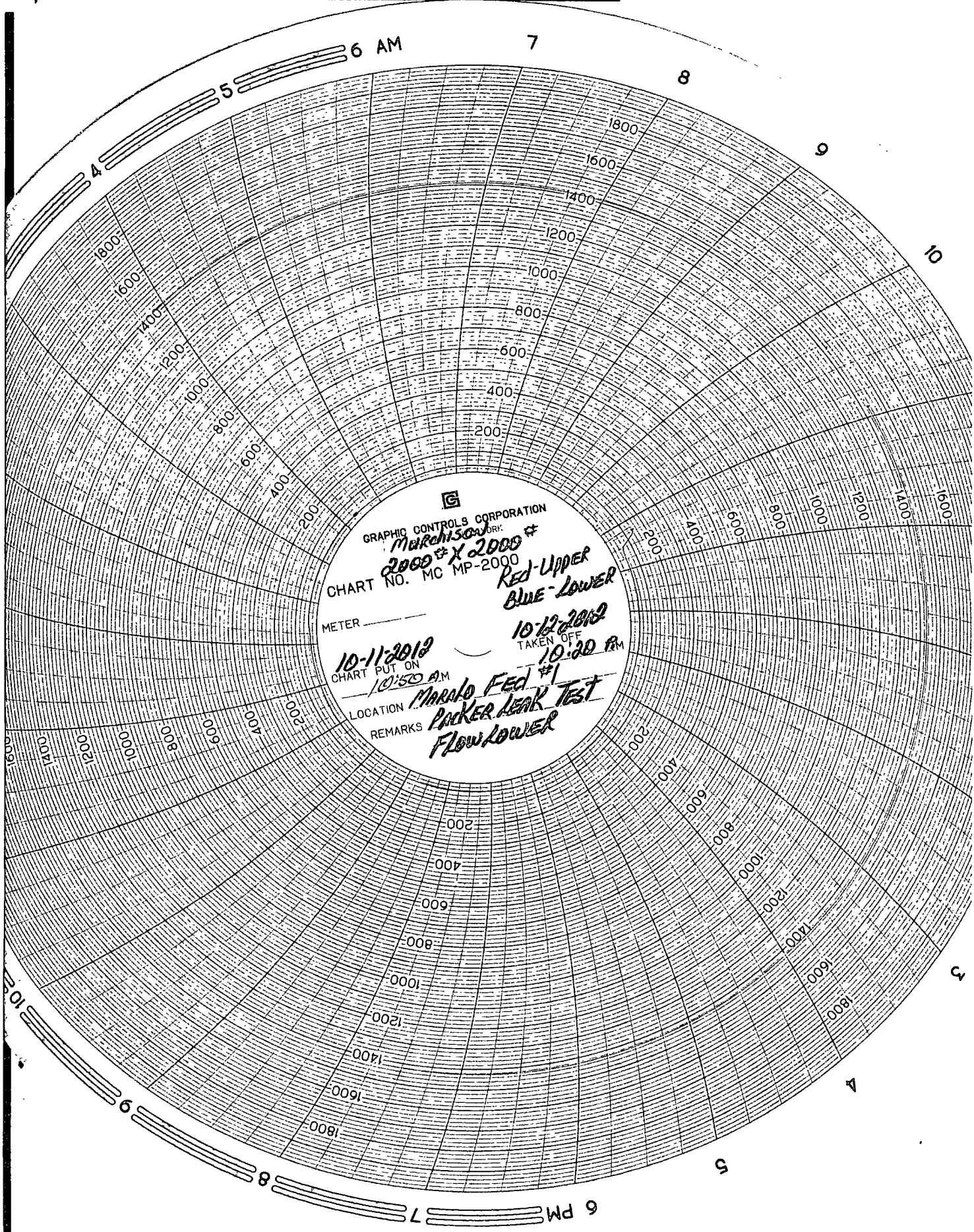
Title NMOCDFE 11/8/12

E-mail Address dnorman@wildcatms.com

Date 10/30/2012



GRAPHIC CONTROLS CORPORATION  
BUFFALO, NEW YORK  
*MURKINSON OIL*  
CHART NO. MC-MP-2000  
*2000 X 2000*  
METER \_\_\_\_\_  
*Red-Upper*  
*Blue-Lower*  
CHART PUT ON *10-10-2012*  
*11:15 A.M.*  
TAKEN OFF *10-11-2012*  
*10:50 A.M.*  
LOCATION *Marato Federal #1*  
REMARKS *PACKER LEAK TEST*  
*SHUT-IN*



GRAPHIC CONTROLS CORPORATION  
MURKINSON  
2000 \* X 2000 \*  
CHART NO. MC MP-2000  
RED-UPPER  
BLUE-LOWER  
METER \_\_\_\_\_  
10-11-2012  
CHART PUT ON 10:50 A.M.  
LOCATION MARATO FED #1  
REMARKS Packer Leak Test  
Flow Lower  
10-12-2012  
TAKEN OFF 10:20 P.M.