

NOV 13 2012

NMOC D ARTESIA

District I
1625 N. French Dr., Hobbs, NM 88240
District II
1301 W. Grand Avenue, Artesia, NM 88210
District III
1000 Rio Brazos Rd., Aztec, NM 87410
District IV
1220 S. St. Francis Dr., Santa Fe, NM 87505

State of New Mexico
Energy, Minerals & Natural Resources Department
OIL CONSERVATION DIVISION
1220 South St. Francis Dr.
Santa Fe, NM 87505

Form C-102
Revised October 15, 2009
Submit one copy to appropriate
District Office
AMENDED REPORT

WELL LOCATION AND ACREAGE DEDICATION PLAT As Drilled

Table with 3 columns: API Number (30-015-40424), Pool Code (55510), Pool Name (Scanlon Draw; Bone Spring), Property Code (38568), Property Name (ONYX PWU "29"), Well Number (4H), OGRID No (6137), Operator Name (DEVON ENERGY PRODUCTION COMPANY, L.P.), Elevation (3312.1)

Surface Location

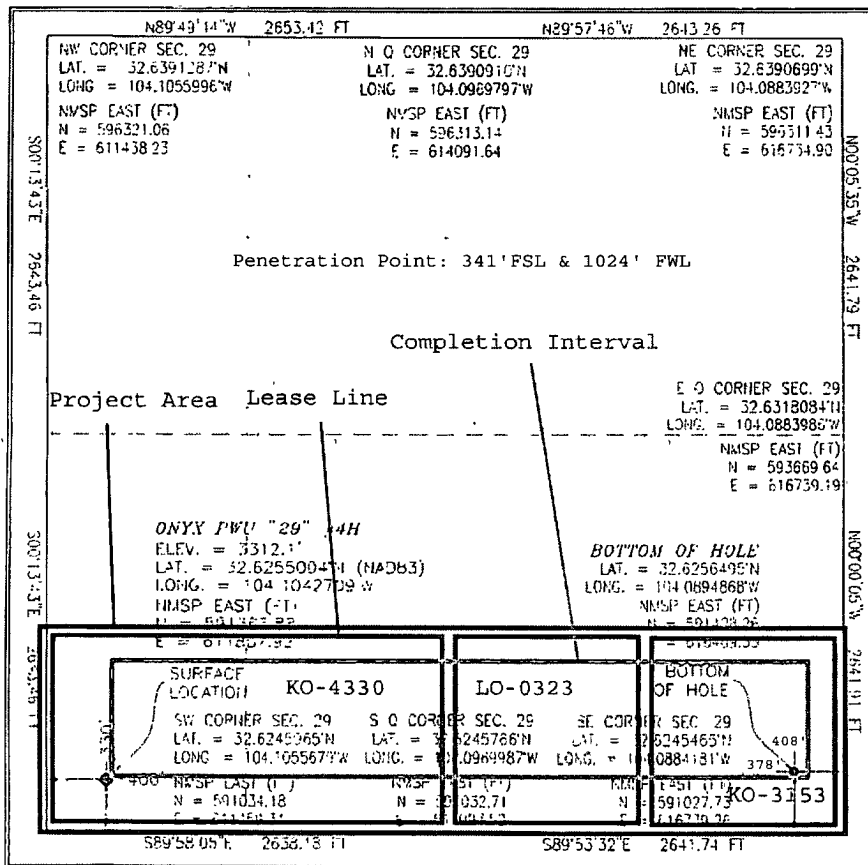
Table with 10 columns: U.I. or lot no. (M), Section (29), Township (19 S), Range (29 E), Lot Idn, Feet from the (330), North/South line (SOUTH), Feet from the (400), East/West line (WEST), County (EDDY)

Bottom Hole Location If Different From Surface

Table with 10 columns: U.I. or lot no. (P), Section (29), Township (19 S), Range (29 E), Lot Idn, Feet from the (378), North/South line (SOUTH), Feet from the (408), East/West line (EAST), County (EDDY)

Table with 4 columns: Dedicated Acres (160.00), Joint or Infill, Consolidation Code, Order No.

No allowable will be assigned to this completion until all interests have been consolidated or a non-standard unit has been approved by the division.



17 OPERATOR CERTIFICATION
I hereby certify that the information contained herein is true and complete to the best of my knowledge and belief, and that this organization either owns a working interest or released mineral interest in the land including the proposed bottom hole location or has a right to drill this well at this location pursuant to a contract with an owner of such a mineral or working interest, or to a voluntary pooling agreement or a compulsory pooling order heretofore entered by the division.
Signature: Melanie Crawford
Date: 11/8/12

18 SURVEYOR CERTIFICATION
I hereby certify that the well location shown on this plat was plotted from field notes of actual surveys made by me or under my supervision, and that the same is true and correct to the best of my belief.
APR 10 2012
Date of Survey
Signature and Seal of Professional Surveyor
Certificate Number: TILMONT ENARRANILLO, PLS 12797
SURVEY NO. 947