

DISTRICT I

1825 N. French Dr., Hobbs, NM 88240

DISTRICT II

811 South First, Artesia, NM 88210

DISTRICT III

1000 Rio Brazos Rd., Aztec, NM 87410

DISTRICT IV

2040 South Pacheco, Santa Fe, NM 87505

State of New Mexico

Energy, Minerals and Natural Resources Department

Form C-102

Revised March 17, 1999

Submit to Appropriate District Office

State Lease - 4 Copies

Fee Lease - 3 Copies

OIL CONSERVATION DIVISION

2040 South Pacheco

Santa Fe, New Mexico 87504-2088

☐ AMENDED REPORT

WELL LOCATION AND ACREAGE DEDICATION PLAT

API Number	Pool Code 47545	Pool Name NASH DRAW DELAWARE
Property Code 001796	Property Name POKER LAKE UNIT	Well Number 231
OGRID No. 001801	Operator Name BASS ENTERPRISES PRODUCTION COMPANY	Elevation 3182'

Surface Location

UL or lot No.	Section	Township	Range	Lot Idn	Feet from the	North/South line	Feet from the	East/West line	County
A	19	24 S	30 E		330	NORTH	630	EAST	EDDY

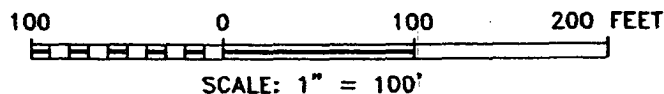
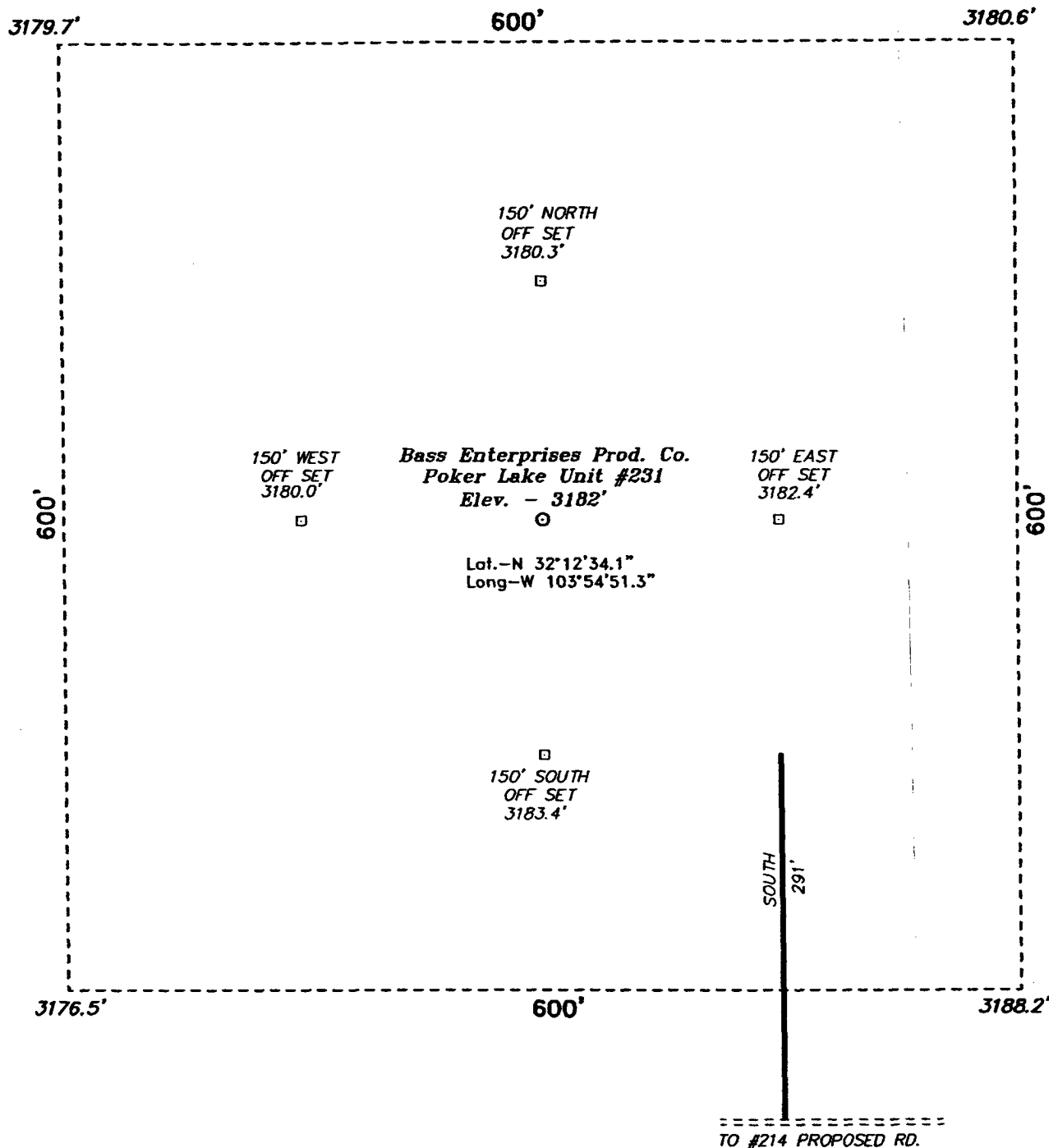
Bottom Hole Location If Different From Surface

UL or lot No.	Section	Township	Range	Lot Idn	Feet from the	North/South line	Feet from the	East/West line	County
Dedicated Acres 40	Joint or Infill N	Consolidation Code	Order No.						

NO ALLOWABLE WILL BE ASSIGNED TO THIS COMPLETION UNTIL ALL INTERESTS HAVE BEEN CONSOLIDATED
OR A NON-STANDARD UNIT HAS BEEN APPROVED BY THE DIVISION

LOT 1 - 40.77 AC.			OPERATOR CERTIFICATION I hereby certify the the information contained herein is true and complete to the best of my knowledge and belief. <u>William R. Dannels</u> Signature W.R. DANNELS Printed Name DIVISION DRILLING SUPT. Title 3/5/05 Date
LOT 2 - 40.87 AC.	80 AC GLO	160 AC GLO	SURVEYOR CERTIFICATION I hereby certify that the well location shown on this plat was plotted from field notes of actual surveys made by me or under my supervision, and that the same is true and correct to the best of my belief. December 9, 2004 Date Surveyed Signature of Gary L. Jones Professional Surveyor No. 4927 Certificate No. Gary L. Jones 7977 BASIN SURVEYS
LOT 3 - 40.94 AC.			
LOT 4 - 41.06 AC.	80 AC GLO	160 AC GLO	

SECTION 19, TOWNSHIP 24 SOUTH, RANGE 30 EAST, N.M.P.M.,
EDDY COUNTY, NEW MEXICO.



DIRECTIONS TO LOCATION:

FROM THE JUNCTION OF CO. RD. 746A AND CO. RD. 748, GO EASTERLY ON CO. RD. 746A FOR APPROX. 1.0 MILE AND NORTHERLY FOR APPROX. 0.75 MILE TO PROPOSED LEASE ROAD TO THE PLU #213 AND THE PLU #214.

BASIN SURVEYS P.O. BOX 1786 - HOBBS, NEW MEXICO

W.O. Number: 4927

Drawn By: J. PRESLEY

Date: 12/20/04

Disk: JLP #1 - 4927A.DWG

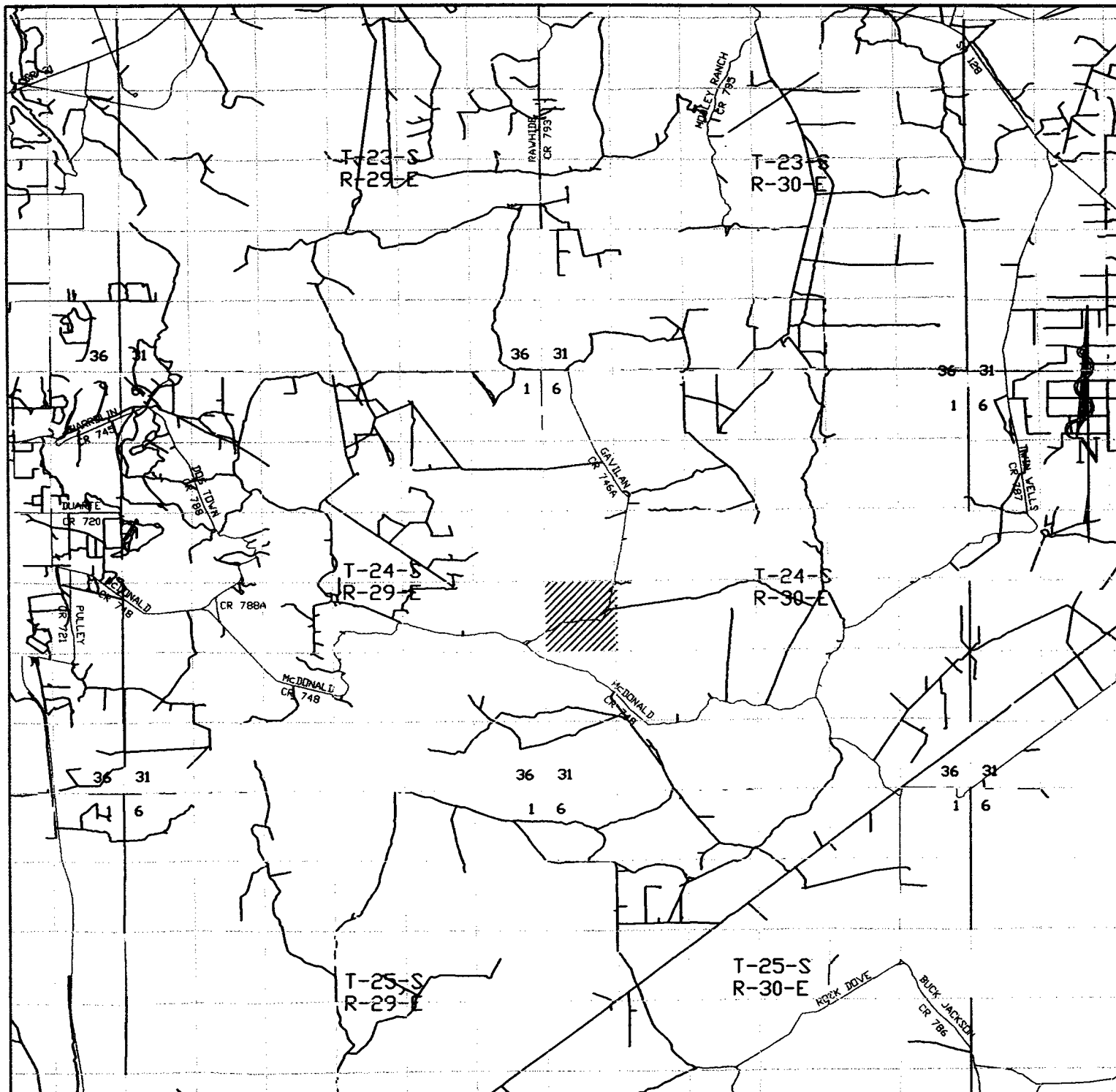
BASS ENTERPRISES PRODUCTION CO.

REF: Poker Lake Unit No. 231 / Well Pad Topo

THE POKER LAKE UNIT No. 231 LOCATED 330' FROM
THE NORTH LINE AND 630' FROM THE EAST LINE OF
SECTION 19, TOWNSHIP 24 SOUTH, RANGE 30 EAST,
N.M.P.M., EDDY COUNTY, NEW MEXICO.

Survey Date: 12/09/04

Sheet 1 of 1 Sheets



POKER LAKE UNIT #231

Located at 330' FNL and 630' FEL
 Section 19, Township 24 South, Range 30 East,
 N.M.P.M., Eddy County, New Mexico.

basin
surveys
 focused on excellence
 in the oilfield

P.O. Box 1786
 1120 N. West County Rd.
 Hobbs, New Mexico 88241
 (505) 393-7316 - Office
 (505) 392-3074 - Fax
 basinsurveys.com

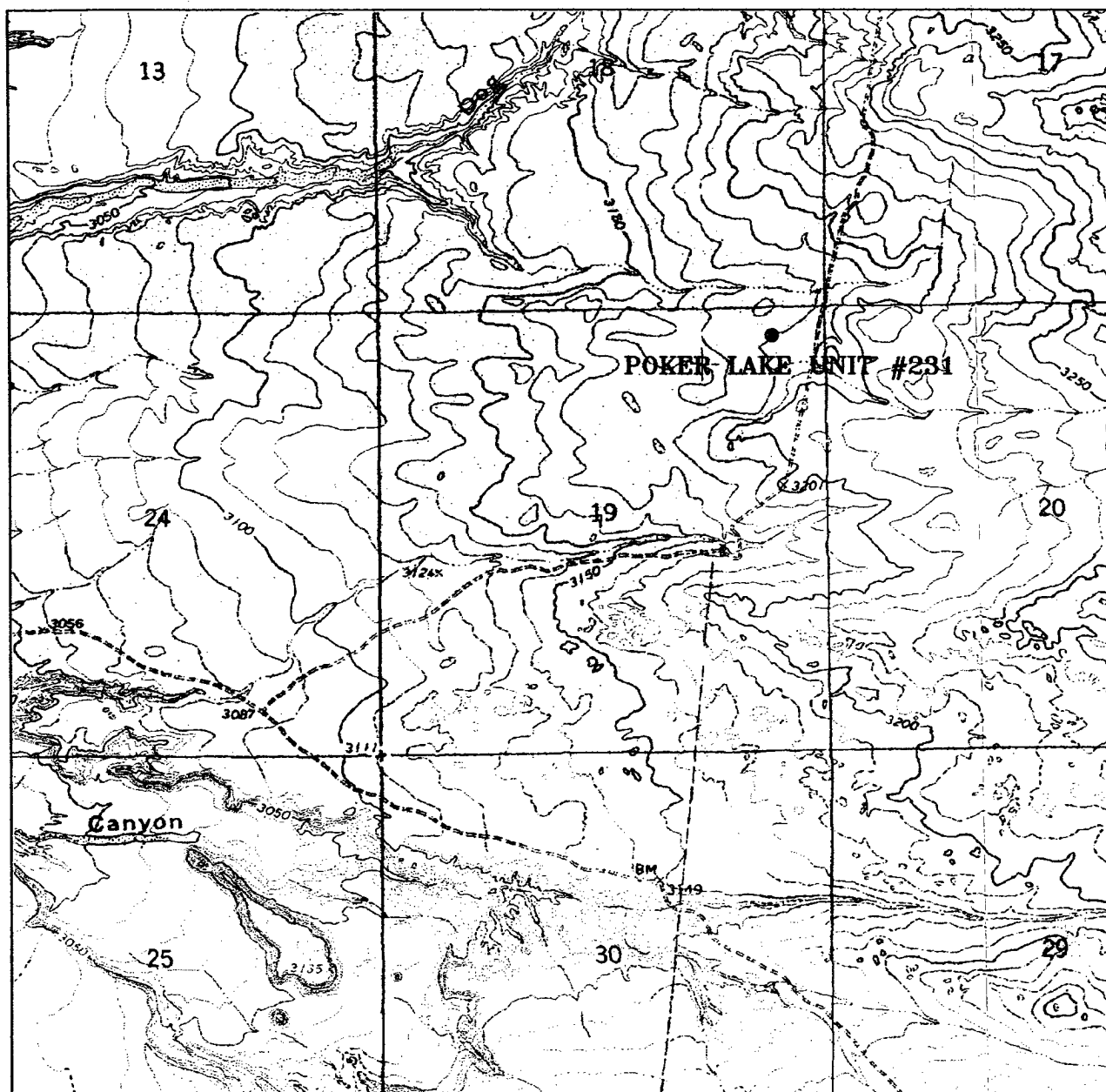
W.O. Number: 4927AA - JLP #1

Survey Date: 12/09/04

Scale: 1" = 2000'

Date: 12/20/04

BASS ENTERPRISES
PRODUCTION CO.



POKER LAKE UNIT #231

Located at 330' FNL and 630' FEL
 Section 19, Township 24 South, Range 30 East,
 N.M.P.M., Eddy County, New Mexico.

basin
surveys
 focused on excellence
 in the oilfield

P.O. Box 1786
 1120 N. West County Rd.
 Hobbs, New Mexico 88241
 (505) 393-7316 - Office
 (505) 392-3074 - Fax
 basinsurveys.com

W.O. Number: 4927AA - JLP #1

Survey Date: 12/09/04

Scale: 1" = 2000'

Date: 12/20/04

BASS ENTERPRISES
PRODUCTION CO.