

Yates Petroleum Corporation

**105 S. Fourth Street
Artesia, NM 88210**

Hydrogen Sulfide (H₂S) Contingency Plan

For

**30-C15-30636
Jacque AQJ State #2
1650' FSL, 330' FWL
Sec-34, T-21S, R-31E
Eddy County NM**

RECEIVED

OCT 26 2004

000-ARTESIA

Emergency Procedures

In the case of a release of gas containing H₂S, the first responder(s) must isolate the area and prevent entry by other persons into the 100 ppm ROE. Additionally the first responder(s) must evacuate any public places encompassed by the 100 ppm ROE. First responder(s) must take care not to injure themselves during this operation. Company and/or local officials must be contacted to aid in this operation. Evacuation of the public should be beyond the 100 ppm ROE.

All responders must have training in the detection of H₂S, measures for protection against the gas, equipment used for protection and emergency response. Additionally, responders must be equipped with H₂S monitors and air packs in order to control the release. Use the “buddy system” to ensure no injuries during the response.

Ignition of Gas Source

Should control of the well be considered lost and ignition considered, take care to protect against exposure to Sulfur Dioxide (SO₂). Intentional ignition must be coordinated with the NMOCD and local officials. Additionally the NM State Police may become involved. NM State Police shall be the Incident Command on scene of any major release. Take care to protect downwind whenever there is an ignition of the gas

Characteristics of H₂S and SO₂

Common Name	Chemical Formula	Specific Gravity	Threshold Limit	Hazardous Limit	Lethal Concentration
Hydrogen Sulfide	H ₂ S	1.189 Air = 1	10 ppm	100 ppm/hr	600 ppm
Sulfur Dioxide	SO ₂	2.21 Air = 1	2 ppm	N/A	1000 ppm

Contacting Authorities

YPC personnel must liaison with local and state agencies to ensure a proper response to a major release. Additionally, the OCD must be notified of the release as soon as possible but no later than 4 hours. Agencies will ask for information such as type and volume of release, wind direction, location of release, etc. Be prepared with all information available. The following call list of essential and potential responders has been prepared for use during a release. YPC Company response must be in coordination with the State of New Mexico’s ‘Hazardous Materials Emergency Response Plan’ (HMER)

Yates Petroleum Corporation Phone Numbers

YPC Office	(505) 748-1471
Pinson McWhorter/Operations Manager	(505) 748-4189
Darrel Atkins/Production Manager	(505) 748-4204
Ron Beasley/Prod Superintendent	(505) 748-4210
Al Springer/Drilling	(505) 748-4225
Paul Hanes/Prod. Foreman/Roswell	(505) 624-2805
Jim Krogman/Drilling Superintendent.....	(505) 748-4215
Artesia Answering Service	(505) 748-4302
(During non-office hours)	

Agency Call List

Eddy County (505)

Artesia

State Police	746-2703
City Police.....	746-2703
Sheriff's Office	746-9888
Ambulance	911
Fire Department	746-2701
LEPC (Local Emergency Planning Committee)	746-2122
NMOCD.....	748-1283

Carlsbad

State Police	885-3137
City Police.....	885-2111
Sheriff's Office	887-7551
Ambulance	911
Fire Department	885-2111
LEPC (Local Emergency Planning Committee).....	887-3798
US Bureau of Land Management.....	887-6544

New Mexico Emergency Response Commission (Santa Fe)	(505)476-9600
24 HR	(505) 827-9126
New Mexico State Emergency Operations Center.....	(505) 476-9635
National Emergency Response Center (Washington, DC)	...(800) 424-8802

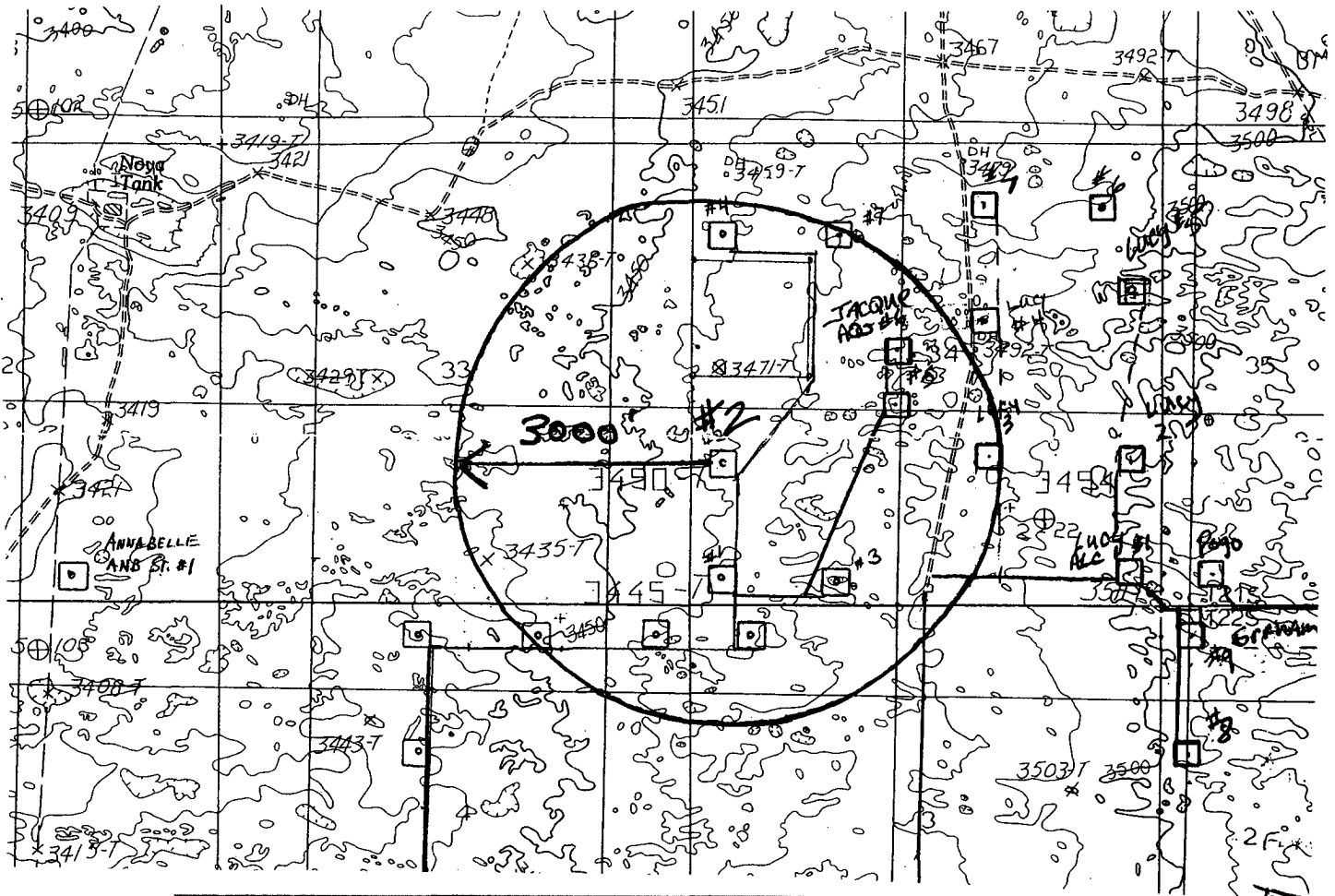
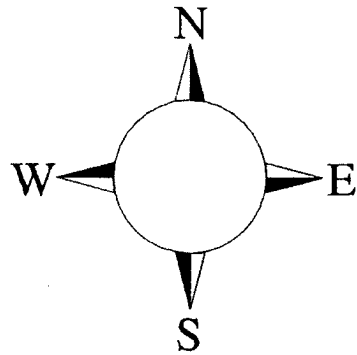
Other

Boots & Coots IWC	1-800-256-9688 or (281) 931-8884
Cudd Pressure Control.....	(915) 699-0139 or (915) 563-3356
Halliburton	(505) 746-2757
B. J. Services.....	(505) 746-3569

Flight For Life -4000 24th St, Lubbock, TX	(806) 743-9911
Aerocare -Rr 3 Box 49f , Lubbock, TX	(806) 747-8923
Med Flight Air Amb 2301 Yale Blvd SE #D3, Albuquerque, NM	(505) 842-4433
S B Air Med Svc 2505 Clark Carr Loop SE, Albuquerque, NM	(505) 842-4949

Jacque AQJ State #2 Location

This is an open drilling site. H₂S monitoring equipment and emergency response equipment will be used within 500' of zones known to contain H₂S, including warning signs, wind indicators and H₂S monitor.



Assumed 100 ppm ROE = 3000'
100 ppm H₂S concentration shall trigger activation of this plan.