

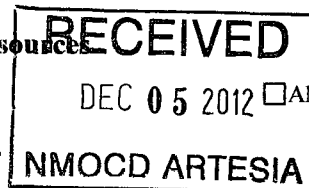
**District I**  
1625 N. French Dr., Hobbs, NM 88240  
Phone: (575) 393-6161 Fax: (575) 393-0720

**District II**  
811 S. First St., Artesia, NM 88210  
Phone: (575) 748-1283 Fax: (575) 748-9720

**District III**  
1000 Rio Brazos Road, Aztec, NM 87410  
Phone: (505) 334-6178 Fax: (505) 334-6170

**District IV**  
1220 S. St. Francis Dr., Santa Fe, NM 87505  
Phone: (505) 476-3460 Fax: (505) 476-3462

**State of New Mexico**  
**Energy Minerals and Natural Resources**  
**Oil Conservation Division**  
**1220 South St. Francis Dr.**  
**Santa Fe, NM 87505**



Form C-101  
Revised November 14, 2012

☐ AMENDED REPORT

**APPLICATION FOR PERMIT TO DRILL, RE-ENTER, DEEPEN, PLUGBACK, OR ADD A ZONE**

<b>1. Operator Name and Address</b> Apache Corporation 303 Veterans Airpark Lane, Suite 3000 Midland, Texas 79705		<b>2. OGRID Number</b> 873
<b>4. Property Code</b> <del>308890</del> 39578		<b>3. API Number</b> 30-015-90876
<b>5. Property Name</b> Geronimo 28 State SWD		<b>6. Well No.</b> 2

**7. Surface Location**

UL - Lot	Section	Township	Range	Lot Idn	Feet from	N/S Line	Feet From	E/W Line	County
I	28	17S	28E	I	1655	South	800	East	Eddy

**8. Proposed Bottom Hole Location**

UL - Lot	Section	Township	Range	Lot Idn	Feet from	N/S Line	Feet From	E/W Line	County

**9. Pool Information**

Pool Name	Pool Code
SWD-Ellenburger	SWD-Devonian 96103 & 96101

**Additional Well Information**

<b>11. Work Type</b> N	<b>12. Well Type</b> S	<b>13. Cable/Rotary</b> R	<b>14. Lease Type</b> S	<b>15. Ground Level Elevation</b> 3,685'
<b>16. Multiple</b> N	<b>17. Proposed Depth</b> 12,500'	<b>18. Formation</b> Devonian & Ellenburger	<b>19. Contractor</b>	<b>20. Spud Date</b>
<b>Depth to Ground water</b> 300' or less		<b>Distance from nearest fresh water well</b>		<b>Distance to nearest surface water</b>

**21. Proposed Casing and Cement Program**

Type	Hole Size	Casing Size	Casing Weight/ft	Setting Depth	Sacks of Cement	Estimated TOC
Surface	17 1/2"	13 3/8"	48# H-40	500'	580 Sx.	Surface
Intermediate	12 1/4"	9 5/8"	40# J-55	4,500'	1400 Sx.	Surface
Production	8 3/4"	7"	26# L-80 & HCL-80	12,500'	1080 Sx. *	3,000'

**Casing/Cement Program: Additional Comments**

*7" casing stage cemented. 1 <sup>st</sup> Stage-270 Sx. 2 <sup>nd</sup> Stage-810 Sx. DV Tool setting depth: 10,900'
---

**22. Proposed Blowout Prevention Program**

Type	Working Pressure	Test Pressure	Manufacturer
Hydril	3000	2000	

<b>23. I hereby certify that the information given above is true and complete to the best of my knowledge and belief.</b> <b>I further certify that I have complied with 19.15.14.9 (A) NMAC <input type="checkbox"/> and/or 19.15.14.9 (B) NMAC <input type="checkbox"/> if applicable.</b> Signature: <i>David Catanach</i> Printed name: David Catanach Title: Agent-Apache Corporation E-mail Address: drcatanach@netscape.com Date: 12/3/2012	OIL CONSERVATION DIVISION	
	Approved By: <i>J. C. Shepard</i>	
	Title: <i>BOO/CG/5</i>	
	Approved Date: <i>12/7/2012</i>	Expiration Date: <i>12/2/2014</i>
	Conditions of Approval Attached	

DISTRICT I  
1625 N. French Dr., Hobbs, NM 88240  
Phone: (575) 393-6161 Fax: (575) 393-0720

DISTRICT II  
811 S. First St., Artesia, NM 88210  
Phone: (575) 748-1283 Fax: (575) 748-9720

DISTRICT III  
1000 Rio Brazos Road, Aztec, NM 87410  
Phone: (505) 334-6178 Fax: (505) 334-6170

DISTRICT IV  
1220 S. St. Francis Dr., Santa Fe, NM 87505  
Phone: (505) 476-3460 Fax: (505) 476-3462

State of New Mexico  
Energy, Minerals & Natural Resources Department  
OIL CONSERVATION DIVISION  
1220 South St. Francis Dr.  
Santa Fe, New Mexico 87505

Form C-102  
Revised August 1, 2011  
Submit one copy to appropriate  
District Office

☐ AMENDED REPORT

WELL LOCATION AND ACREAGE DEDICATION PLAT

API Number <b>30-015-40876</b>	Pool Code <b>96103/96101</b>	Pool Name <b>SWD; Ellenburger</b> <sup>(96103)</sup>	Pool Name <b>SWD; Devonian</b> <sup>(96101)</sup>
Property Code <b>39578</b>	Property Name <b>GERONIMO 28 STATE SWD</b>		Well Number <b>2</b>
OGRID No. <b>873</b>	Operator Name <b>APACHE CORPORATION</b>		Elevation <b>3685'</b>

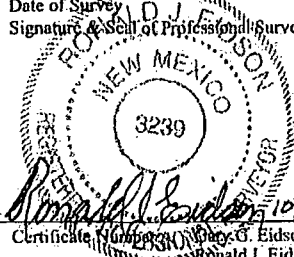
Surface Location

UL or lot No.	Section	Township	Range	Lot Idn	Feet from the	North/South line	Feet from the	East/West line	County
I	28	17-S	28-E		1655	SOUTH	800	EAST	EDDY

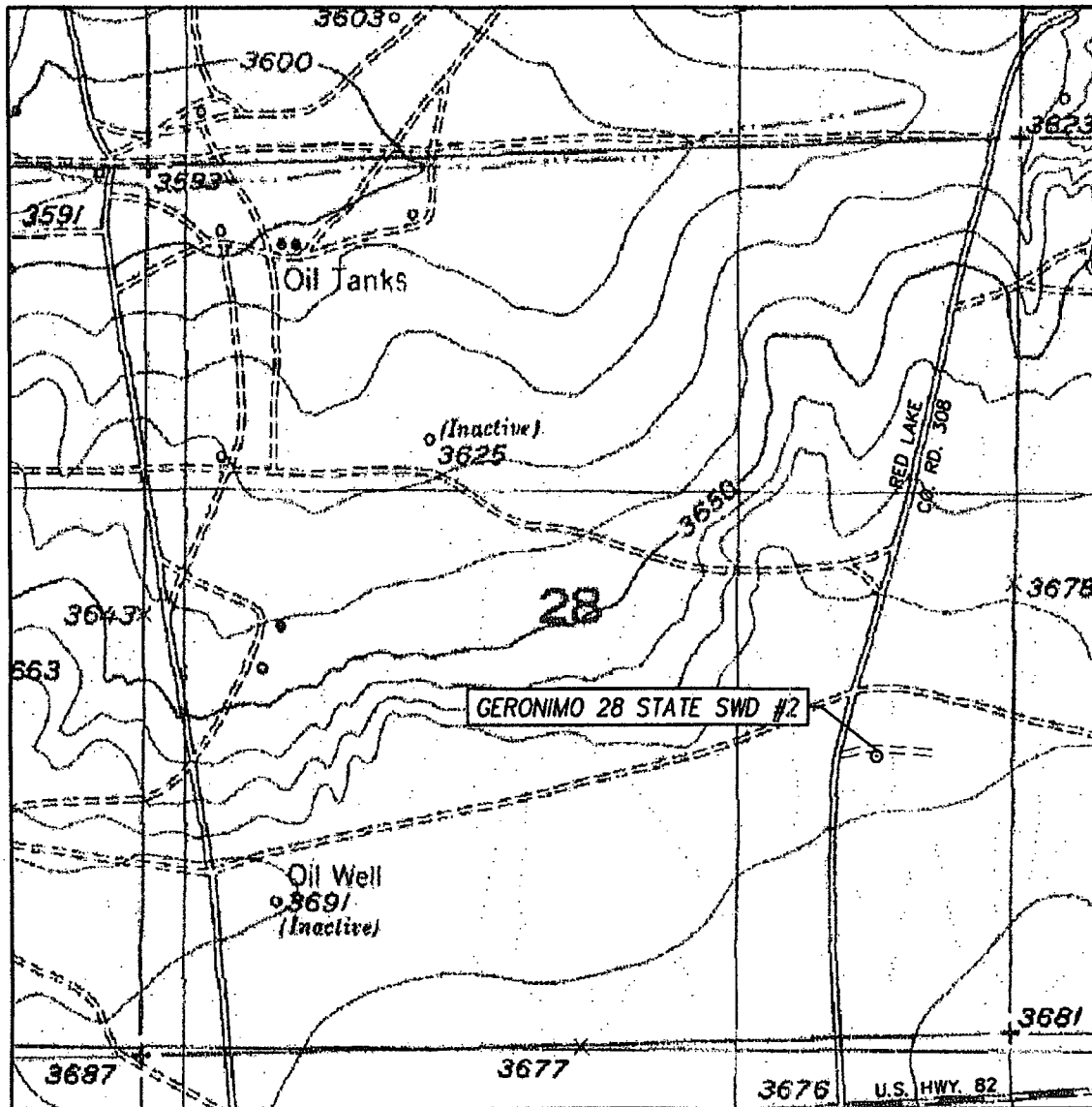
Bottom Hole Location If Different From Surface

UL or lot No.	Section	Township	Range	Lot Idn	Feet from the	North/South line	Feet from the	East/West line	County
Dedicated Acres <b>40</b>	Joint or Infill	Consolidation Code	Order No.						

NO ALLOWABLE WILL BE ASSIGNED TO THIS COMPLETION UNTIL ALL INTERESTS HAVE BEEN CONSOLIDATED OR A NON-STANDARD UNIT HAS BEEN APPROVED BY THE DIVISION

<p>GEODETIC COORDINATES NAD 27 NME</p> <p>SURFACE LOCATION Y=655807.2 N X=548779.9 E</p> <p>LAT.=32.802802' N LONG.=104.174577' W</p> <p>LAT.=32° 48' 10" N LONG.=104° 10' 28" W</p>	<p><b>OPERATOR CERTIFICATION</b></p> <p>I hereby certify that the information herein is true and complete to the best of my knowledge and belief, and that this organization either owns a working interest or unleased mineral interest in the land including the proposed bottom hole location or has a right to drill this well at this location pursuant to a contract with an owner of such mineral or working interest, or to a voluntary pooling agreement or a compulsory pooling order heretofore entered by the division.</p> <p><i>Vicki Brown</i> <sup>10/11/12</sup> Signature Date</p> <p><b>Vicki Brown</b> Printed Name</p> <p><i>vicki.brown@apachecorp.com</i> E-mail Address</p>
	<p><b>SURVEYOR CERTIFICATION</b></p> <p>I hereby certify that the well location shown on this plat was plotted from field notes of actual surveys made by me or under my supervision, and that the same is true and correct to the best of my belief.</p> <p><b>OCTOBER 5, 2012</b> Date of Survey</p> <p><i>Ronald J. Eidson</i> Signature &amp; Seal of Professional Surveyor</p> <p></p> <p>Certificate Number <b>12641</b> Ronald J. Eidson <b>3239</b></p> <p>AF JWSC W.O.: 12.11.1354</p>

# LOCATION VERIFICATION MAP



SCALE: 1" = 1000'

CONTOUR INTERVAL:  
RED LAKE, N.M. - 10'

SEC. 28 TWP. 17-S RGE. 28-E

SURVEY N.M.P.M.

COUNTY EDDY STATE NEW MEXICO

DESCRIPTION 1655' FSL & 800' FEL

ELEVATION 3685'

OPERATOR APACHE CORPORATION

LEASE GERONIMO 28 STATE SWD

U.S.G.S. TOPOGRAPHIC MAP

RED LAKE, N.M.

