

DISTRICT I
1625 N. French Dr., Hobbs, NM 88240

DISTRICT II
1301 W. Grand Avenue, Artesia, NM 88210

DISTRICT III
1000 Rio Brazos Rd., Aztec, NM 87410

DISTRICT IV
1220 S. St. Francis Dr., Santa Fe, NM 87505

State of New Mexico
Energy, Minerals and Natural Resources Department

RECEIVED

JAN 09 2013

Form C-102
Revised July 18, 2010

Submit one copy to appropriate
District Office

OIL CONSERVATION DIVISION ARTESIA
1220 South St. Francis Dr.
Santa Fe, New Mexico 87505

WELL LOCATION AND ACREAGE DEDICATION PLAT

☐ AMENDED REPORT

API Number 30-015-40296	Pool Code 503827	Pool Name Poker Lake (Delaware)
Property Code 306402	Property Name POKER LAKE UNIT	Well Number 392H
OGRID No. 260737	Operator Name BOPCO, L.P.	Elevation 3495'

Surface Location

UL or lot No. C	Section 20	Township 24 S	Range 31 E	Lot Idn	Feet from the 200	North/South line NORTH	Feet from the 1900	East/West line WEST	County EDDY
---------------------------	----------------------	-------------------------	----------------------	---------	-----------------------------	----------------------------------	------------------------------	-------------------------------	-----------------------

Bottom Hole Location If Different From Surface

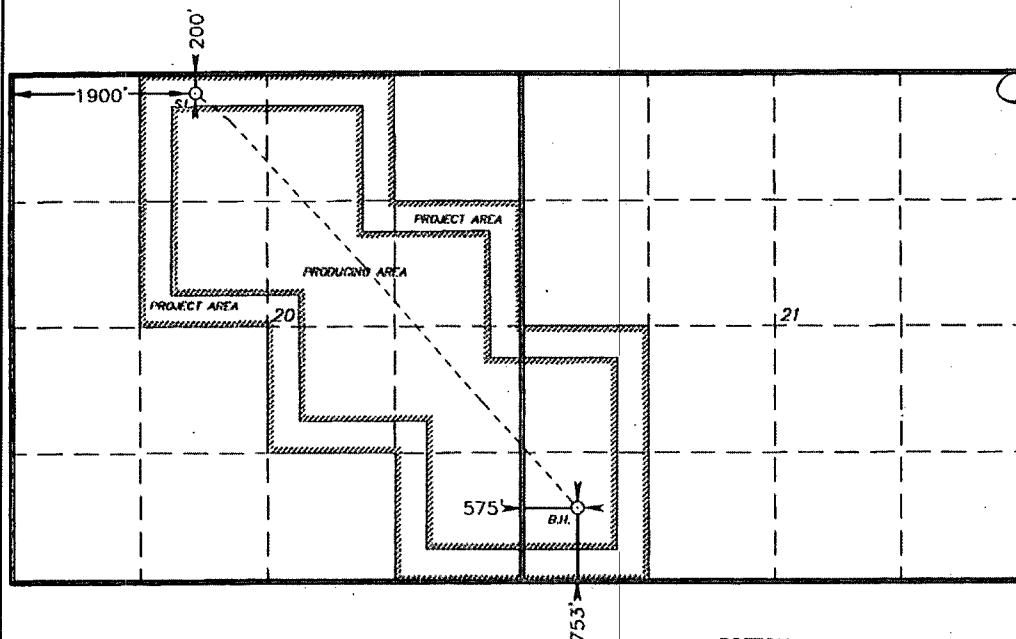
UL or lot No. M	Section 21	Township 24 S	Range 31 E	Lot Idn	Feet from the 753	North/South line SOUTH	Feet from the 575	East/West line WEST	County EDDY
---------------------------	----------------------	-------------------------	----------------------	---------	-----------------------------	----------------------------------	-----------------------------	-------------------------------	-----------------------

Dedicated Acres 400	Joint or Infill	Consolidation Code	Order No.
-------------------------------	-----------------	--------------------	-----------

NO ALLOWABLE WILL BE ASSIGNED TO THIS COMPLETION UNTIL ALL INTERESTS HAVE BEEN CONSOLIDATED
OR A NON-STANDARD UNIT HAS BEEN APPROVED BY THE DIVISION

**SURFACE LOCATION
DELAWARE PT**

Lat - N 32°12'33.82"
Long - W 103°48'06.42"
NMSPC- N 440304.045
E 664403.230
(NAD-27)



**BOTTOM
HOLE LOCATION**

Lat - N 32°11'51.03"
Long - W 103°47'20.21"
NMSPC- N 436000.07
E 668394.79
(NAD-27)

OPERATOR CERTIFICATION

I hereby certify that the information contained herein is true and complete to the best of my knowledge and belief, and that this organization either owns a working interest or undivided mineral interest in the land including the proposed bottom hole location or has a right to drill this well at this location pursuant to a contract with an owner of such a mineral or working interest, or to a voluntary pooling agreement or a compulsory pooling order heretofore entered by the division.

Tracie J Cherry 01-07-13
Signature Date
Tracie J Cherry
Printed Name
tjcherry@basspet.com
Email Address

SURVEYOR CERTIFICATION

I hereby certify that the well location shown on this plat was plotted from field notes of actual surveys made by me or under my supervision, and that the same is true and correct to the best of my belief.

Gary L. Jones
Date Surveyed
Signature & Seal of Professional Surveyor
Certificate No. Gary L. Jones 7977
BASIN SURVEYS 24970