

DISTRICT IV
1220 S. St. Francis Dr., Santa Fe, NM 87505

OIL CONSERVATION DIVISION
1220 South St. Francis Dr.
Santa Fe, New Mexico 87505

Submit one copy to appropriate District Office

RECEIVED
Submit one copy
ON JAN 30 2013
NMOCD ARTESIA

☐ AMENDED REPORT

WELL LOCATION AND ACREAGE DEDICATION PLAT

API Number 30-015-39930	Pool Code 50386	Pool Name POKER LAKE, SW (DELAWARE)
Property Code 306402	Property Name POKER LAKE UNIT	Well Number 411H
OGRID No. 260737	Operator Name BOPCO, L.P.	Elevation 3504'

Surface Location

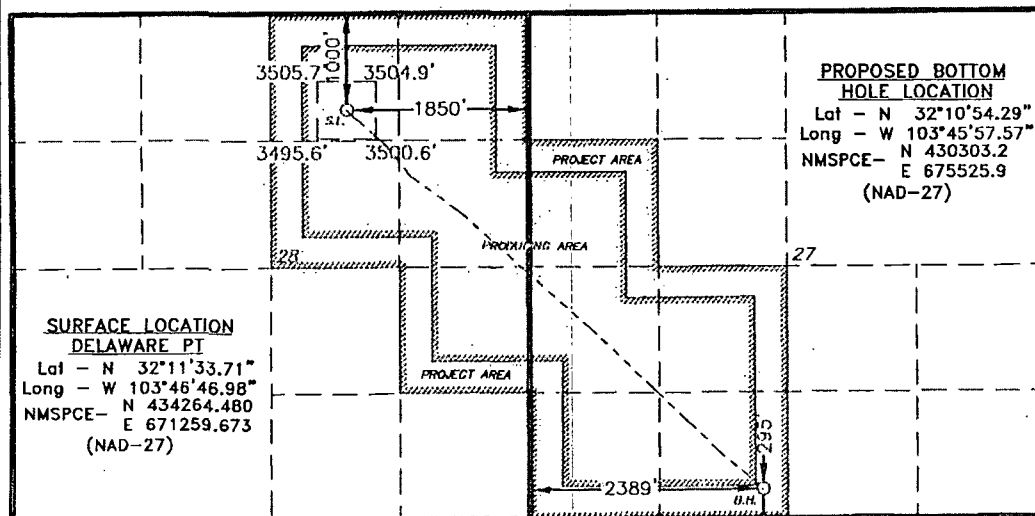
UL or lot No.	Section	Township	Range	Lot Idn	Feet from the	North/South line	Feet from the	East/West line	County
B	28	24 S	31 E		1000	NORTH	1850	EAST	EDDY

Bottom Hole Location If Different From Surface

UL or lot No.	Section	Township	Range	Lot Idn	Feet from the	North/South line	Feet from the	East/West line	County
N	27	24 S	31 E		295	SOUTH	2389	WEST	EDDY

Dedicated Acres	Joint or Infill	Consolidation Code	Order No.
400			

NO ALLOWABLE WILL BE ASSIGNED TO THIS COMPLETION UNTIL ALL INTERESTS HAVE BEEN CONSOLIDATED
OR A NON-STANDARD UNIT HAS BEEN APPROVED BY THE DIVISION



SURVEY CERTIFICATION IS FOR
SURFACE LOCATION ONLY

OPERATOR CERTIFICATION

I hereby certify that the information contained herein is true and complete to the best of my knowledge and belief, and that this organization either owns a working interest or unleased mineral interest in the land (including the surface) but, has no location or has a right to drill this well at this location pursuant to a contract with an owner of such a mineral or working interest, or to a voluntary pooling agreement or a compulsory pooling order heretofore entered by the division.

Marty JRF 1-10-13
Signature Date

Martyn Robertson

Printed Name
mjrobertson@basspet.com

Email Address

SURVEYOR CERTIFICATION

I hereby certify that the well location shown on this plat was plotted from field notes of actual surveys made by me or under my supervision and that the same is true and correct to the best of my belief.

AUGUST 20 1977
 Date Surveyed _____
 Signature & Seal of _____
 Professional Land Surveyor
 W. O. No. 24005

Certificate No. Gary L. Jones 7977

BASIN SURVEYS 24965