

District I  
1625 N. French Dr., Hobbs, NM 88240  
District II  
1301 W. Grand Avenue, Artesia, NM 88210  
District III  
1000 Rio Brazos Rd., Aztec, NM 87410  
District IV  
1220 S. St. Francis Dr., Santa Fe, NM 87505

State of New Mexico  
Energy, Minerals & Natural Resources

Form C-101  
May 27, 2004

RECEIVED

Oil Conservation Division  
1220 S. St. Francis Dr.  
Santa Fe, NM 87505

SEP 14 2005

Submit to appropriate District Office

OCD-ARTEZIA

☐ AMENDED REPORT

APPLICATION FOR PERMIT TO DRILL, RE-ENTER, DEEPEN, PLUGBACK, OR ADD A ZONE

<sup>1</sup> Operator Name and Address Stephens & Johnson Operating Co. P.O. Box 2249, Wichita Falls, TX 76307-2249		<sup>2</sup> OGRID Number 019958
<sup>4</sup> Property Code 009799	<sup>5</sup> Property Name East Millman Pool Unit Tract 4	<sup>3</sup> API Number 30- 015- 34343
<sup>9</sup> Proposed Pool 1 Millman Yates-SR-QN-GB-SA, East 46555		<sup>6</sup> Well No. 20
<sup>10</sup> Proposed Pool 2		

<sup>7</sup> Surface Location

UL or lot no.	Section	Township	Range	Lot. Idn	Feet from the	North/South Line	Feet from the	East/West line	County
0	12	19S	28E		475	South	2264	East	Eddy

<sup>8</sup> Proposed Bottom Hole Location If Different From Surface

UL or lot no.	Section	Township	Range	Lot. Idn	Feet from the	North/South Line	Feet from the	East/West line	County

Additional Well Location

<sup>11</sup> Work Type Code N	<sup>12</sup> Well Type Code 0	<sup>13</sup> Cable/Rotary R	<sup>14</sup> Lease Type Code S	<sup>15</sup> Ground Level Elevation 3379'
<sup>16</sup> Multiple No	<sup>17</sup> Proposed Depth 2700	<sup>18</sup> Formation San Andres	<sup>19</sup> Contractor United Drilling	<sup>20</sup> Spud Date October 5, 2005
Depth to ground water 150'		Distance from nearest fresh water well 1500'		Distance from nearest surface water 1100'
Pit Liner: Synthetic <input checked="" type="checkbox"/> 12 mils thick Clay <input type="checkbox"/> Pit Volume 7000 bbls Drilling Method:				
Closed-Loop System <input type="checkbox"/> Fresh Water <input type="checkbox"/> Brine <input checked="" type="checkbox"/> Diesel/Oil-based <input type="checkbox"/> Gas/Air <input type="checkbox"/>				

<sup>21</sup> Proposed Casing and Cement Program

Hole Size	Casing Size	Casing weight/foot	Setting Depth	Sacks of Cement	Estimated TOC
12 1/4"	8 5/8"	24 lb/ft	300'	200	Surface
7 7/8"	5 1/2"	15.50 lb/ft	2700'	800	Surface

<sup>22</sup> Describe the proposed program. If this application is to DEEPEN or PLUG BACK, give the data on the present productive zone and proposed new productive zone. Describe the blowout prevention program, if any. Use additional sheets if necessary.

See Attachment

<sup>23</sup> I hereby certify that the information given above is true and complete to the best of my knowledge and belief. I further certify that the drilling pit will be constructed according to NMOC guidelines ☒ a general permit ☐, or an (attached) alternative OCD-approved plan ☐.  
Signature: *William M. Kincaid*

Printed name: William M. Kincaid

Title: Petroleum Engineer

E-mail Address: mkincaid@sjoc.net

Date: 9-12-05

Phone: (940) 723-2166

OIL CONSERVATION DIVISION

Approved by:

Title:

Approval Date:

SEP 21 2005

Expiration Date:

SEP 21 2006

Conditions of Approval:

Attached ☐

1. Drill 12 1/4" hole to 300'. Set 8 5/8" 24# csg w/approx. 200 sacks of cmt. WOC 18 hrs.
2. Drill 7 7/8" hole to 2700'. Set 5 1/2", 15.50# csg w/approx. 800 sacks of cement.
3. Complete well in Grayburg formation.

BOP: An annular type BOP will be used with a 3,000 psig working pressure and a 6,000 psig test pressure.  
Note: This Application for Permit to Drill does not meet the requirement for an H2S Contingency Plan to be submitted.

District I  
PO Box 1980, Hobbs, NM 88241-1980  
District II  
PO Drawer DD, Artesia, NM 88211-0719  
District III  
1680 Rio Brazos Rd., Aztec, NM 87410  
District IV  
PO Box 2088, Santa Fe, NM 87504-2088

State of New Mexico  
Energy, Minerals & Natural Resources Department

OIL CONSERVATION DIVISION  
PO Box 2088  
Santa Fe, NM 87504-2088

Form C-102  
Revised February 10, 1994  
Instructions on back  
Submit to Appropriate District Office  
State Lease - 4 Copies  
Fee Lease - 3 Copies

☐ AMENDED REPORT

WELL LOCATION AND ACREAGE DEDICATION PLAT

API Number		Pool Code	Pool Name
		46555	Millman Yates-SR-QN-GB-SA, East
Property Code	Property Name		Well Number
009799	EAST MILLMAN UNIT TRACT 4		20
OGRID No.	Operator Name		Elevation
019958	STEPHENS & JOHNSON OPERATING CO.		3379

10 Surface Location

UL or lot no.	Section	Township	Range	Lot Idn	Feet from the	North/South line	Feet from the	East/West line	County
0	12	19 S	28 E		475	SOUTH	2264	EAST	EDDY

11 Bottom Hole Location If Different From Surface

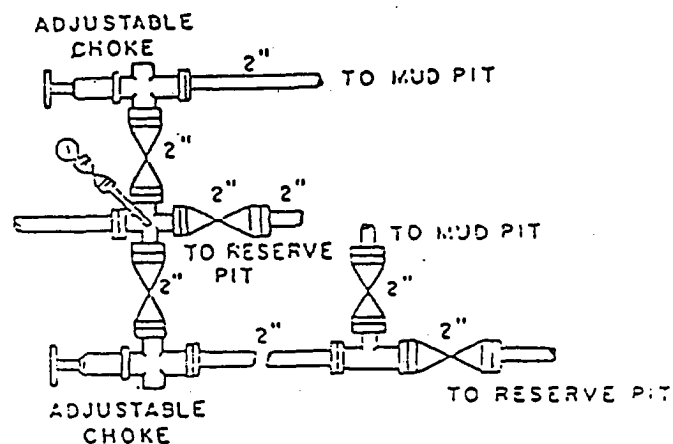
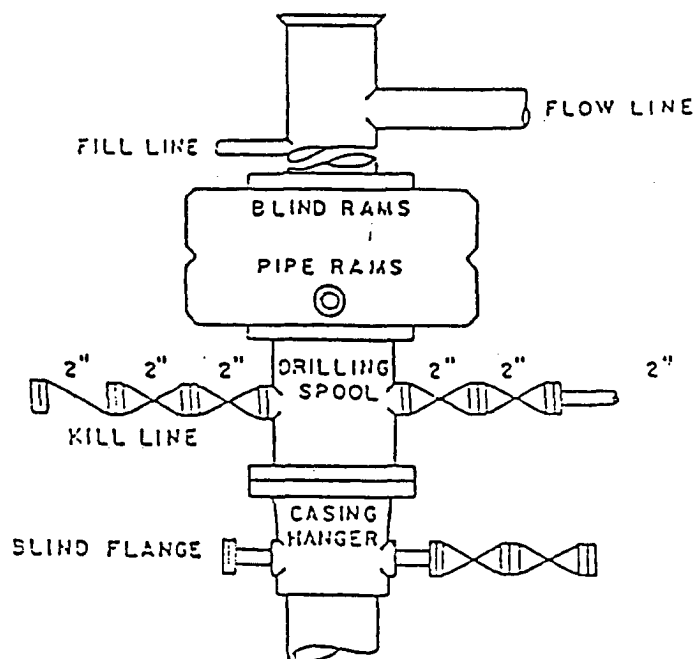
UL or lot no.	Section	Township	Range	Lot Idn	Feet from the	North/South line	Feet from the	East/West line	County
Dedicated Acres		Joint or Infill		Consolidation Code		Order No.			
40									

NO ALLOWABLE WILL BE ASSIGNED TO THIS COMPLETION UNTIL ALL INTERESTS HAVE BEEN CONSOLIDATED  
OR A NON-STANDARD UNIT HAS BEEN APPROVED BY THE DIVISION

16					<p>17 OPERATOR CERTIFICATION</p> <p>I hereby certify that the information contained herein is true and complete to the best of my knowledge and belief.</p> <p><i>William M. Kincaid</i></p> <p>Signature</p> <p>William M. Kincaid</p> <p>Printed Name</p> <p>Petroleum Engineer</p> <p>Title</p> <p>9-12-2005</p> <p>Date</p>
					<p>18 SURVEYOR CERTIFICATION</p> <p>I hereby certify that the well location shown on this plat was plotted from field notes of actual surveys made by me or under my supervision, and that the same is true and correct to the best of my belief.</p> <p>September 8, 2005</p> <p>Date of Survey</p> <p>P. R. Patton</p> <p>Signature and Seal of Professional Surveyor:</p> <p><i>P. R. Patton</i></p> <p>8112</p> <p>Certificate Number</p> <p>8112</p>

475'

2264'



**BOP DIAGRAM**  
**3000# WORKING PRESSURE**  
**RAMS OPERATED DAILY**

**EAST MILLMAN POOL UNIT NO. 4-20**  
**EDDY COUNTY, NEW MEXICO**