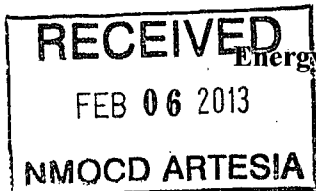


District I
1625 N. French Dr., Hobbs, NM 88240
Phone: (575) 393-6161 Fax: (575) 393-0720
District II
811 S. First St., Artesia, NM 88210
Phone: (575) 748-1283 Fax: (575) 748-9720
District III
1000 Rio Brazos Road, Aztec, NM 87410
Phone: (505) 334-6178 Fax: (505) 334-6170
District IV
1220 S. St. Francis Dr., Santa Fe, NM 87505
Phone: (505) 476-3460 Fax: (505) 476-3462



State of New Mexico
Energy Minerals and Natural Resources
Oil Conservation Division
1220 South St. Francis Dr.
Santa Fe, NM 87505

Form C-101
Revised November 14, 2012

☐ AMENDED REPORT

APPLICATION FOR PERMIT TO DRILL, RE-ENTER, DEEPEN, PLUGBACK, OR ADD A ZONE

1. Operator Name and Address CHEVRON MIDCONTINENT, L.P. 15 SMITH ROAD MIDLAND, TEXAS 79705		2. OGRID Number 241333
		3. API Number 30-015-34066
4. Property Code 302775	5. Property Name MEAD	6. Well No. 7

7. Surface Location

UL - Lot B	Section 8	Township 22-S	Range 27-E	Lot Idn	Feet from 1080	N/S Line NORTH	Feet From 1980	E/W Line EAST	County EDDY
---------------	--------------	------------------	---------------	---------	-------------------	-------------------	-------------------	------------------	----------------

8. Proposed Bottom Hole Location

UL - Lot	Section	Township	Range	Lot Idn	Feet from	N/S Line	Feet From	E/W Line	County
----------	---------	----------	-------	---------	-----------	----------	-----------	----------	--------

9. Pool Information

EAST CARLSBAD; WOLFCAMP SOUTH GAS	Pool Name	74160 Pool Code
--------------------------------------	-----------	--------------------

Additional Well Information

11. Work Type RECOMPLETE	12. Well Type GAS	13. Cable/Rotary	14. Lease Type PRIVATE	15. Ground Level Elevation 3106' GL
16. Multiple	17. Proposed Depth	18. Formation WOLFCAMP	19. Contractor	20. Spud Date
Depth to Ground water		Distance from nearest fresh water well		Distance to nearest surface water

21. Proposed Casing and Cement Program

Type	Hole Size	Casing Size	Casing Weight/ft	Setting Depth	Sacks of Cement	Estimated TOC
			NO CHANGE			

Casing/Cement Program: Additional Comments

--

22. Proposed Blowout Prevention Program

Type	Working Pressure	Test Pressure	Manufacturer

23. I hereby certify that the information given above is true and complete to the best of my knowledge and belief.

I further certify that I have complied with 19.15.14.9 (A) NMAC ☐ and/or 19.15.14.9 (B) NMAC ☒ if applicable.

Signature: *Denise Pinkerton*

Printed name: DENISE PINKERTON

Title: REGULATORY SPECIALIST

E-mail Address: leakejd@chevron.com

Date: 02-05-2013

Phone: 432-687-7375

OIL CONSERVATION DIVISION

Approved By:

Title:

Approved Date: 2/7/2013

Expiration Date: 2/7/2015

Conditions of Approval Attached

11/8/2012
Mead #7
Wolfcamp Re-completion

- 1 MIRU pulling unit. Bleed pressure from surface, intermediate, and production casing. If necessary, pump down production csg with brine water to kill well. ND WH. NU 5K hydraulic BOP Pipe rams on top of blind rams. Pull one stand of tbq install pkr GIH set pkr @ ~55' and test BOP to 250/500 psi against packer
- 2 POOH and stand back 2-7/8" 6.5# L-80 production tbq. (Prod tbq was scanned OCT 2012 and all but yellow band LD)
- 3 PU/TIH w/ RBP retrieving tool on 11,200' 2-7/8" PH-6 tbq utilize slip type elevators. Latch RBP @ 11,200'. POOH w/ tbq & LD RBP + retrieving tool.
- 4 RU Gray wireline. Test lubricator on catwalk to 1000 psi. NU Lubricator. PU guage ring for 4-1/2" 13.5# csg. RIH to 11,100'. POOH
- 5 PU/RIH w/ 4-1/2" CIBP and set @ 11,100'. Dump bail 35' of class 'H' cmt on top of CIBP. POOH
- 6 PU/RIH w/ 4-1/2" CIBP and set @ 10,300'. Dump bail 35' of class 'H' cmt on top of CIBP. POOH
- 7 PU/RIH w/ 4-1/2" CIBP and set @ 10,050'. Dump bail 35' of class 'H' cmt on top of CIBP. POOH
- 8 PU/RIH w/ perforating guns. Perforate csg @ (9,394-9,440') (9,626-40') w/ 3-1/8" standard charge guns @ 3 spf and 120 degree phasing, 180 total holes. POOH/LD guns (check to make sure all shots fired). ND Lubricator. RD Gray wireline (Tie-in to Neu/Den/GR Log dated 5/30/2005 by Pure Resources, L.P.)
- 9 PU/TIH w/ 28 jts 2-7/8" slim hole coupling L-80 tbq as tailpipe + 7" pkr + on/off tool on 2-7/8" 6.5# L-80 production tbq (hydrotest in the hole to 6000 psi). Set pkr @ 8,554' with 2-7/8" tailpipe run down to 9,394'
- 10 Load BS w/ BW, set pop-off to 500 psi. Acidize perms w/ 15,000 gal 15% NEFE HCL @ 15 bpm (6,000 max psi). Drop 240 bio-balls in 80 ball clusters, every 5,000 gals, during the first 10,000 gals of the job. Flush to bottom perf w/ brine water
- 16 Release pkr. Lower pkr + tbq down and reset at 8,600' (EOT should be at ~9,440')
- 17 RIH and set profile plug in pkr. Unlatch from pkr. Circ pkr fluid. Latch back onto pkr. ND BOP. NU WH
- 18 Pull profile plug. RU & swab well to recover load and kick well off to flow.
- 19 RDMO. Turn well over to operations

Mead #7 Wellbore Diagram

Created: 11/15/12 By: JWPF
 Updated: _____ By: _____
 Lease: Mead
 Field: Carlsbad South - Morrow
 Surf. Loc.: 1,080' FNL & 1,980' FEL
 Bot. Loc.: 1,156' FNL & 1,855' FEL
 County: Eddy St.: NM
 Status: Active Gas Well

Well #: 7 Fd./St. #: Fed 33471
 API: 30-015-34066
 Unit Ltr.: B Section: 8
 TSHP/Rng: S-22 E-27
 Unit Ltr.: B Section: 8
 TSHP/Rng: S-22 E-27
 Directions: Carlsbad, NM
 Chevno: HT4615

Surface Casing (Not Shown)

Size: 13 3/8
 Wt., Grd.: 48# H-40
 Depth: 435
 Sxs Cmt: 475
 Circulate: Yes, 60
 TOC: Surface
 Hole Size: 17 1/2

Intermediate Casing

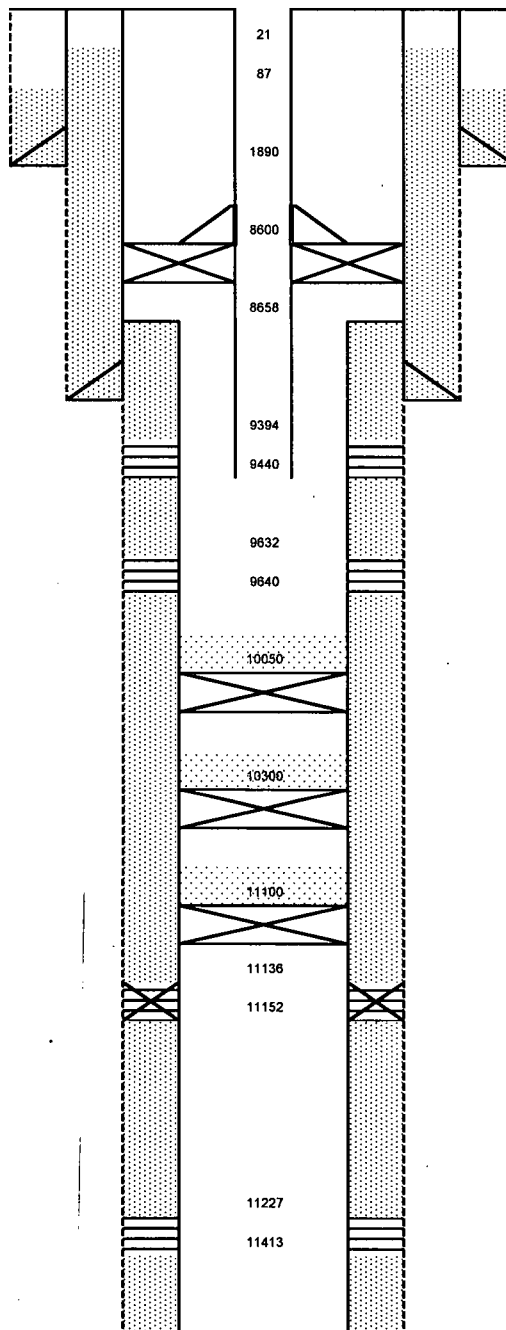
Size: 9 5/8
 Wt., Grd.: 36# J-55
 Depth: 1,890
 Sxs Cmt: 850
 Circulate: No
 TOC: 87' TS
 Hole Size: _____

Production Casing

Size: 7"
 Wt., Grd.: 26# P-110
 Depth: 8,900
 Sxs Cmt: 825
 Circulate: Colored Water
 TOC: 21' TS
 Hole Size: _____

Production Liner

Size: 4 1/2
 Wt., Grd.: 13.5# P-110
 Top: 8,658
 Depth: 11,770
 Sxs Cmt: 225
 Circulate: Yes, 10

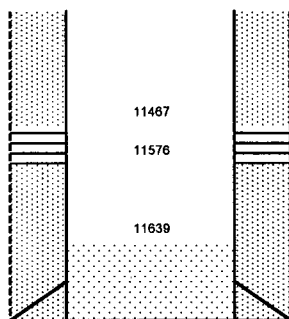


KB: 3,131
 DF: _____
 GL: 3,106
 Ini. Spud: 05/15/05
 Ini. Comp.: 06/30/05

Geology - Tops From Drilling

Delaware 1,987
 Bone Spring 5,116
 Wolfcamp 8,603
 Strawn 10,087

TOC:	<u>TOL</u>
Hole Size:	<u>6 1/2</u>



Atoka	10,328
Morrow	11,021

PBTD: 11,445
TD: 11,770

Mead #7 Wellbore Diagram

Created: 12/18/06 By: C. A. Irle
 Updated: _____ By: _____
 Lease: Mead
 Field: Carlsbad South - Morrow
 Surf. Loc.: 1,080' FNL & 1,980' FEL
 Bot. Loc.: 1,156' FNL & 1,855' FEL
 County: Eddy St.: NM
 Status: Active Gas Well

Well #: 7 Fd./St. #: Fed 33471
 API: 30-015-34066
 Unit Ltr.: B Section: 8
 TSHP/Rng: S-22 E-27
 Unit Ltr.: B Section: 8
 TSHP/Rng: S-22 E-27
 Directions: Carlsbad, NM
 Chevno: HT4615

Surface Casing (Not Shown)

Size: 13 3/8
 Wt., Grd.: 48# H-40
 Depth: 435
 Sxs Cmt: 475
 Circulate: Yes, 60
 TOC: Surface
 Hole Size: 17 1/2

Intermediate Casing

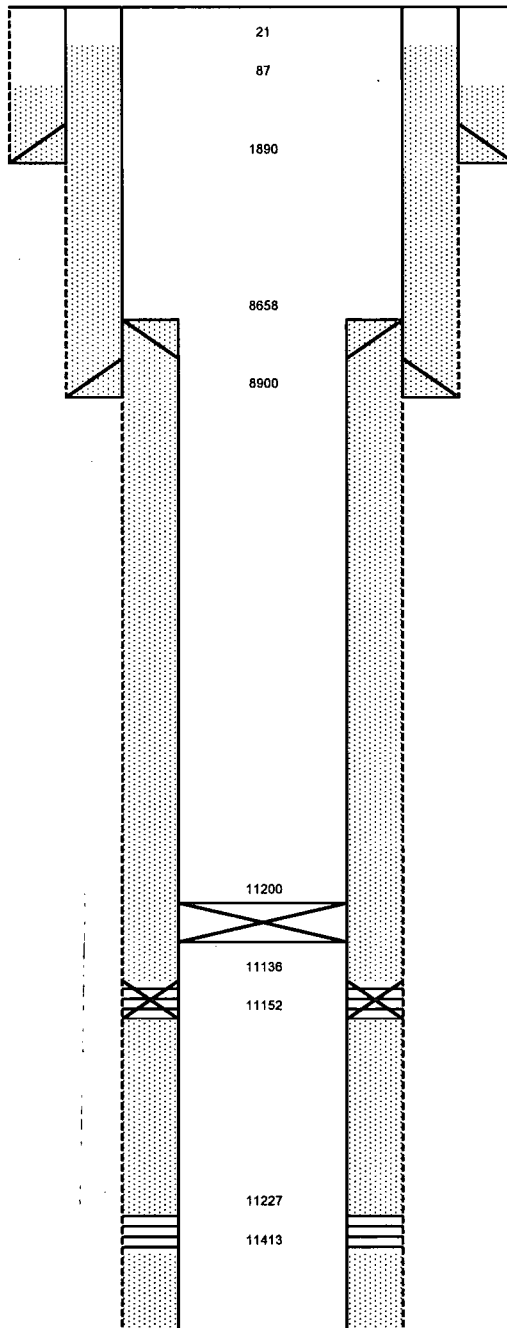
Size: 9 5/8
 Wt., Grd.: 36# J-55
 Depth: 1,890
 Sxs Cmt: 850
 Circulate: No
 TOC: 87' TS
 Hole Size: _____

Production Casing

Size: 7"
 Wt., Grd.: 26# P-110
 Depth: 8,900
 Sxs Cmt: 825
 Circulate: Colored Water
 TOC: 21' TS
 Hole Size: _____

Production Liner

Size: 4 1/2
 Wt., Grd.: 13.5# P-110
 Top: 8,658
 Depth: 11,770
 Sxs Cmt: 225
 Circulate: Yes, 10



KB: 3,131
 DF: _____
 GL: 3,106
 Ini. Spud: 05/15/05
 Ini. Comp.: 06/30/05

History

6/30/05 Ini Comp: Tag 11564, DO 11718, perf Morrow C 2 spf 11467, 470, 486, 488, 490, 498, 523, 526, 534, 538, 552, 556, 571, 576 (28 hls), 55000 gls 70Q foam 55000# 20/40 drc, flo thru CBP 11445, perf Morrow B 2 spf 11227, 237, 249, 284, 287, 300, 302, 316, 319, 370, 376, 378, 387, 408, 413 (30 hls), frac 55000 gls 70Q foam 55000# 20/40 drc, flo thru CBP 11181, perf Morrow A 2 spf 11136-152 (48 hls), frac 35000 gls 70Q foam 35000# 20/40 drc, flow, CT mill both CBP's, CO 11677, tag 11665, pkr 11030, tbg latch pkr, blow PO plg, swab, flow.
 8/30/05 Wtr Flow: Rel pkr, CIBP 11200, cmt ret 11000, sqz 226 sx, tag 10990, DO cmt & CIBP, fall 11639, perf Morrow B & C 2 spf 11284, 287, 300, 302, 316, 319, 370, 376, 378, 387, 408, 413, 467, 470, 486, 488, 490, 498, 523, 526, 534, 538, 552, 556, 574, 576 (52 hls), pkr 11030, swab, acid 3400 gls 150 BS, swab.

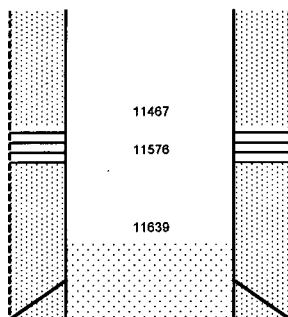
Geology - Tops From Drilling

Delaware 1,987
 Bone Spring 5,116
 Wolfcamp 8,603
 Strawn 10,087

TOC:	TOL
Hole Size:	6 1/2

Perforations

11136-152, 227, 237, 249, 284, 287,
 300, 302, 316, 319, 370, 376, 378,
 387, 408, 413, 467, 470, 486, 488,
 490, 498, 523, 526, 534, 538, 552,
 556, 574, 576



PBTD: 11,445
 TD: 11,770

Atoka	10,328
Morrow	11,021

Tubing Detail

2 7/8" 6.5# L-80 Tubing

On/Off Tool w/1.87" F Nipple

Baker 10K Packer 11,030

8' Sub

1.81" F Nipple

District I
1625 N. French Dr., Hobbs, NM 88240
Phone: (575) 393-6161 Fax: (575) 393-0720
District II
811 S. First St., Artesia, NM 88210
Phone: (575) 748-1283 Fax: (575) 848-9720
District III
1000 Rio Brazos Road, Aztec, NM 87410
Phone: (505) 334-6178 Fax: (505) 334-6170
District IV
1220 S. St. Francis Dr., Santa Fe, NM 87505
Phone: (505) 476-3460 Fax: (505) 476-3462

State of New Mexico
Energy, Minerals & Natural Resources Department
OIL CONSERVATION DIVISION
1220 South St. Francis Dr.
Santa Fe, NM 87505

Form C-102
Revised August 1, 2011
Submit one copy to appropriate
District Office

☐ AMENDED REPORT

WELL LOCATION AND ACREAGE DEDICATION PLAT

¹ API Number 30-015-34066	² Pool Code 24200	³ Pool Name CARLSBAD; WOLFCAMP, SOUTH EAST GAS
⁴ Property Code 302775	⁵ Property Name MEAD	⁶ Well Number 7
⁷ OGRID No. 241333	⁸ Operator Name CHEVRON MIDCONTINENT, L.P.	⁹ Elevation 3106'

¹⁰ Surface Location

UL or lot no.	Section	Township	Range	Lot Idn	Feet from the	North/South line	Feet from the	East/West line	County
B	8	22-S	27-E		1080	NORTH	1980	EAST	EDDY

¹¹ Bottom Hole Location If Different From Surface

UL or lot no.	Section	Township	Range	Lot Idn	Feet from the	North/South line	Feet from the	East/West line	County

¹² Dedicated Acres 320	¹³ Joint or Infill	¹⁴ Consolidation Code	¹⁵ Order No.
--------------------------------------	-------------------------------	----------------------------------	-------------------------

No allowable will be assigned to this completion until all interests have been consolidated or a non-standard unit has been approved by the division.

¹⁶	¹⁷ OPERATOR CERTIFICATION I hereby certify that the information contained herein is true and complete to the best of my knowledge and belief, and that this organization either owns a working interest or unleased mineral interest in the land including the proposed bottom hole location or has a right to drill this well at this location pursuant to a contract with an owner of such a mineral or working interest, or to a voluntary pooling agreement or a compulsory pooling order heretofore entered by the division. Signature: <i>Denise Pinkerton</i> Date: 02-05-2013 Printed Name: DENISE PINKERTON REGULATORY SPECIALIST E-mail Address: leakejd@chevron.com
	¹⁸ SURVEYOR CERTIFICATION I hereby certify that the well location shown on this plat was plotted from field notes of actual surveys made by me or under my supervision, and that the same is true and correct to the best of my belief.
	Date of Survey Signature and Seal of Professional Surveyor:
	Certificate Number