

October 1983)
Formerly 9-331C)

H-05-46

N.M. Oil

SUBMIT IN TRIPLICATE*
(Other instructions on reverse side)

Form approved.
Budget Bureau No. 1004-0136
Expires August 31, 1985

UNITED STATES
DEPARTMENT OF THE INTERIOR
BUREAU OF LAND MANAGEMENT

1301 W. C
Artesia, NM

5. LEASE DESIGNATION AND SERIAL NO.
6. IF INDIAN, ALLOTTEE OR TRIBE NAME

APPLICATION FOR PERMIT TO DRILL, DEEPEN, OR PLUG BACK

1a. TYPE OF WORK
DRILL ☒ DEEPEN ☐ PLUG BACK ☐

b. TYPE OF WELL
OIL WELL ☒ GAS WELL ☐ OTHER ☐
SINGLE ZONE ☒ MULTIPLE ZONE ☐

2. NAME OF OPERATOR
BURNETT OIL CO., INC (817/332-5108) 3080

3. ADDRESS OF OPERATOR
801 CHERRY STREET, SUITE 1500, FORT WORTH, TEXAS 76102

4. LOCATION OF WELL (Report location clearly and in accordance with any State requirements.)
At surface UNIT C, 990' FNL, 2310' FWL
At proposed prod. zone 750' B.H. (see attached SN dated 8/15/05)
SAME AS SURFACE

14. DISTANCE IN MILES AND DIRECTION FROM NEAREST TOWN OR POST OFFICE*
APPROXIMATELY 6 MILES EAST OF LOCO HILLS, NEW MEXICO

16. NO. OF ACRES IN LEASE
240

18. DISTANCE FROM PROPOSED LOCATION*
TO NEAREST WELL, DRILLING, COMPLETED,
OR APPLIED FOR, ON THIS LEASE, FT.
330'

21. ELEVATIONS (Show whether DF, RT, GR, etc.)
3710' GR

7. UNIT AGREEMENT NAME

5. FARM OR LEASE NAME

GISSLER B

9. WELL NO.

#38 (API# 30-015-34359)

10. FIELD AND POOL, OR WILDCAT

LOCO HILLS PADDOCK

11. SEC., T., R., M., OR BLK.
AND SURVEY OR AREA

SEC 14, T17S, R30E

12. COUNTY OR PARISH

EDDY

13. STATE

NM

16. NO. OF ACRES IN LEASE
240

18. DISTANCE FROM PROPOSED LOCATION*
TO NEAREST WELL, DRILLING, COMPLETED,
OR APPLIED FOR, ON THIS LEASE, FT.
330'

21. ELEVATIONS (Show whether DF, RT, GR, etc.)
3710' GR

17. NO. OF ACRES ASSIGNED
TO THIS WELL

40

20. ROTARY OR CABLE TOOLS

ROTARY

22. APPROX. DATE WORK WILL START*

September 5, 2005

23. PROPOSED CASING AND CEMENTING PROGRAM

SIZE OF HOLE	SIZE OF CASING	WEIGHT PER FOOT	SETTING DEPTH	QUANTITY OF CEMENT
14 7/8"	9 5/8"	32.30#	375' 445'	+/-400 Sks(Circ. to Surface) WITNESS
8 3/4"	7"	23#	5390'	+/-1500 Sks in 2 Stages
(If water flows are encountered cementing program may vary.)				

A 14 7/8" hole will be drilled to Rustler Anhydrite. We will set 9 5/8" casing @ this depth & cement to surface. After a 18 hour cement wait, casing & BOP will be tested before drill out of the shoe. An 8 3/4" hole will be drilled to approx. 5400' to effectively test the Cedar Lake Yeso interval. The 7" casing will be run and set @ TD and cemented to 600' above highest potential producing horizon(approx. 2100'). We will perforate and treat productive intervals as recommended by service company.

APPROVAL SUBJECT TO
GENERAL REQUIREMENTS AND
SPECIAL STIPULATIONS
ATTACHED

Roswell Controlled Water Basin

IN ABOVE SPACE DESCRIBE PROPOSED PROGRAM: If proposal is to deepen or plug back, give data on present productive zone and proposed new productive zone. If proposal is to drill or deepen directionally, give pertinent data on subsurface locations and measured and true vertical depths. Give blowout preventer program, if any.

24. SIGNED Herbey Randolph TITLE PETROLEUM ENGINEER DATE May 26, 2005

(This space for Federal or State office use)

PERMIT NO. APPROVAL DATE

APPROVED BY /s/ Joe G. Lara TITLE FIELD MANAGER DATE SEP 21 2005

CONDITIONS OF APPROVAL, IF ANY:

APPROVAL FOR 1 YEAR

*See Instructions On Reverse Side

Title 18 U.S.C. Section 1001, makes it a crime for any person knowingly and willfully to make to any department or agency of the United States any false, fictitious or fraudulent statements or representations as to any matter within its jurisdiction.

State of New Mexico

Energy, Minerals and Natural Resources Department

Form C-102

Revised JUNE 10, 2003

Submit to Appropriate District Office

State Lease - 4 Copies

Fee Lease - 3 Copies

DISTRICT II

1301 W. GRAND AVENUE, ARTESIA, NM 88210

DISTRICT III

1000 Rio Brazos Rd., Aztec, NM 87410

DISTRICT IV

1220 S. ST. FRANCIS DR., SANTA FE, NM 87505

OIL CONSERVATION DIVISION

1220 SOUTH ST. FRANCIS DR.
Santa Fe, New Mexico 87505

WELL LOCATION AND ACREAGE DEDICATION PLAT

☐ AMENDED REPORT

API Number 20.015.	Pool Code 96718	Pool Name Loco Hills Paddock
Property Code 002389	Property Name GISSLER B	Well Number 38
GRID No. 003080	Operator Name BURNETT OIL COMPANY	Elevation 3710'

Surface Location

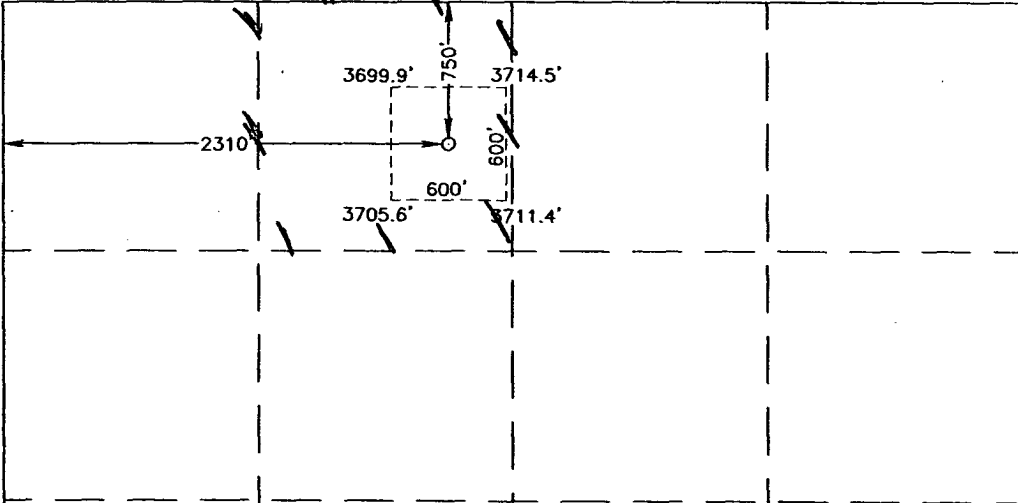
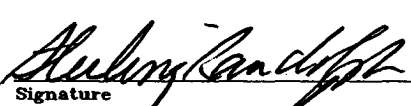
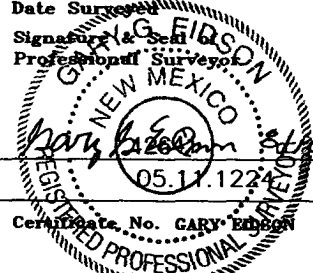
UL or lot No.	Section	Township	Range	Lot Idn	Feet from the	North/South line	Feet from the	East/West line	County
C	14	17-S	30-E		750	NORTH	2310	WEST	EDDY

Bottom Hole Location If Different From Surface

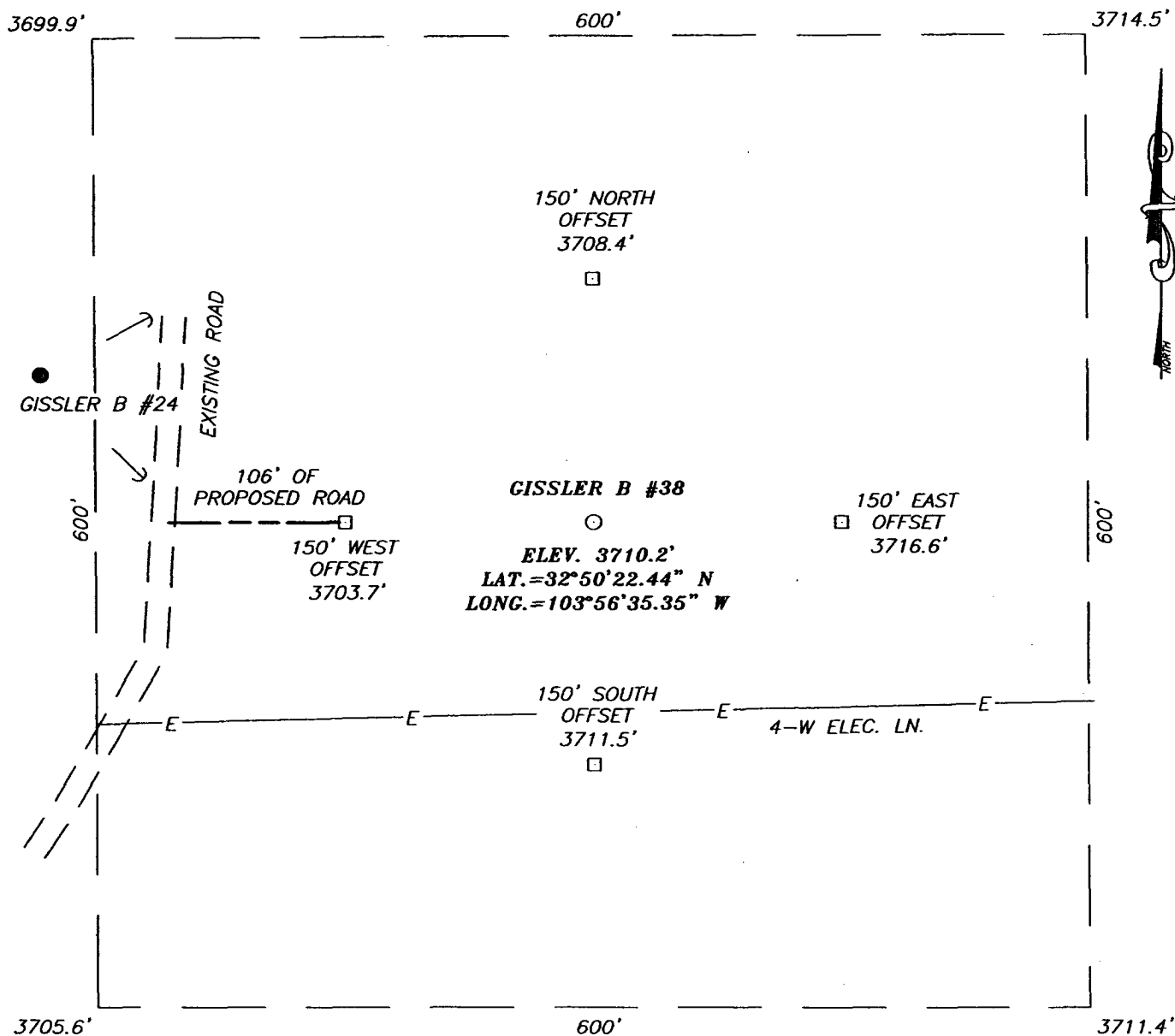
UL or lot No.	Section	Township	Range	Lot Idn	Feet from the	North/South line	Feet from the	East/West line	County

Dedicated Acres	Joint or Infill	Consolidation Code	Order No.
40			

NO ALLOWABLE WILL BE ASSIGNED TO THIS COMPLETION UNTIL ALL INTERESTS HAVE BEEN CONSOLIDATED
OR A NON-STANDARD UNIT HAS BEEN APPROVED BY THE DIVISION

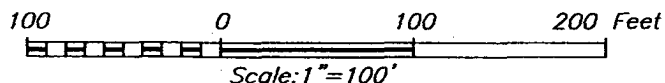
	OPERATOR CERTIFICATION I hereby certify the the information contained herein is true and complete to the best of my knowledge and belief.  Signature STERLING RANDOLPH Printed Name PETROLEUM ENGINEER Title August 15, 2005 Date
<p>GEODETIC COORDINATES NAD 27 NME Y=669367.2 N X=619839.1 E LAT.=32°50'22.44" N LONG.=103°56'35.35" W</p>	SURVEYOR CERTIFICATION I hereby certify that the well location shown on this plat was plotted from field notes of actual surveys made by me or under my supervision, and that the same is true and correct to the best of my belief. AUGUST 8, 2005 Date Surveyed DEL Signature & Seal of Professional Surveyor  Certification No. GARY E. EDSON 12641

SECTION 14, TOWNSHIP 17 SOUTH, RANGE 30 EAST, N.M.P.M.,
EDDY COUNTY, NEW MEXICO



DIRECTIONS TO LOCATION

FROM THE INTERSECTION OF U.S. HWY. #82 AND
CO. RD. #220. GO NORTH ON CO. RD. #220
APPROX. 1.2 MILES. TURN LEFT (N-NW) AND GO
APPROX. 0.9 MILES. TURN RIGHT (NE) AND GO
APPROX. 0.1 MILES. THIS LOCATION IS APPROX.
200' EAST OF EXISTING GISSLER B #24 WELL.



BURNETT OIL COMPANY

GISSLER B #38 WELL
LOCATED 750 FEET FROM THE NORTH LINE
AND 2310 FEET FROM THE WEST LINE OF SECTION 14,
TOWNSHIP 17 SOUTH, RANGE 30 EAST, N.M.P.M.,
EDDY COUNTY, NEW MEXICO.

Survey Date: 08/08/05	Sheet 1 of 1 Sheets
W.O. Number: 05.11.1224	Dr By: DEL
Date: 08/09/05	Disk: CD#4
05111224	Scale: 1"=100'

PROVIDING SURVEYING SERVICES
SINCE 1946
JOHN WEST SURVEYING COMPANY
412 N. DAL PASO
HOBBS, N.M. 88240
(505) 393-3117



DRILLING PLAN

BURNETT OIL CO., INC.
LEASE NO. NMNM 074939
GISSLER B LEASE, WELL NO. 38
UNIT LETTER C
990' FNL, 2310' FWL
SECTION 14, TOWNSHIP 17 SOUTH, RANGE 30 EAST
EDDY COUNTY, NEW MEXICO

(A) DRILLING PROGRAM

(1) Estimated tops of geologic markers:

Alluvium.....Surface
Anhydrite.....275'
Salt.....505'
Base Salt.....1295'
Yates.....1387'
Seven Rivers.....1723'
Grayburg.....2708'
San Andres.....3030'
Glorieta.....4330'

(2) Estimated depths of producing formations:

Fresh water.....None
Saltwater flows..(?)*
Oil and Gas.....1387'**, 2708'**

* As waterflows, if any, are encountered, their depth will be recorded, and drilling will continue to total depth. Multiple stage cementers will be placed in the production casing string to enable us to confine the waterflows to their respective depths by cementing.

** Oil and gas bearing zones, if any, will be determined by log analysis, and will be confined by cementing; subsequently perforated, stimulated and produced in a conventional manner.

(3) Blowout Preventer Specifications:

A 2000 PSI Hydril unit with hydraulic closing equipment. (See Exhibit E schematic). The preventer will be tested before drilling out below surface pipe setting depth. The exact description of the preventer and related equipment will depend on the successful contractor, who has not yet been selected. No high pressure hydrocarbon zones are anticipated.

(4) Supplementary drilling equipment information:

Not available at this time.

(5) Supplementary casing program information:

- a. Surface casing: Surface casing will consist of new 9-5/8" OD 32.30# H40 OR 36# J-55 ST&C R3 pipe and will be run into a 14-7/8" hole with notched Texas Pattern shoe on bottom, insert float valve in first collar, Two(2) centralizers around shoe joint and first collar. Bottom three (3) joints will be thread locked. Setting depth will be +/- 475' in the Rustler Anhydrite, depending on where a suitable casing seat can be found. Cement will be circulated back to the surface. Initial cement volume will be calculated to be 100% excess of the calculated annular volume between the 9-5/8" casing and the hole. **If circulation of cement to the surface is not achieved due to lost circulation, we would like permission (without having to call BLM) to fill this annular space using sufficient rat hole mix to bring cement to surface per BLM specification.** Eighteen (18) hours WOC will be allowed as per NMOCD. Casing will be tested to 1000 PSI before drilling out.
 - b. Production casing: Production casing will consist of new 7" OD 23# J55 R3 8rd LT&C pipe being run to total depth with float shoe on bottom, float collar in first collar, centralizers throughout intervals and above and below any multiple stage cementers, and be cemented with sufficient volume to bring top of cement 600' above the top of the highest potential producing horizon. If water flow is encountered, we will cement from TD back to the stage cementer, open stage cementer, cement from stage cementer with sufficient volume of Class C or equivalent to bring cement up to at least 600' above the highest potential producing horizon, then balancing hydrostatic weight of the cement by adjusting the flow of water to surface through the 7" casing, enabling the 2nd stage of cement to set up. Casing will be shut in after twelve (12) hours. If there is no flow of water to surface around the 7" casing, we will cement the water flow proper through the stage cementer with +/- 900 sacks. In case the 2nd stage is not successful in shutting off any annular flow, we will repeat the 2nd stage until successful. After drilling out and testing the casing to 2000 PSI, a cement bond log will be run to evaluate the cement job.
- (6) Mud program: Native mud (red beds and shale) will be used to total depth. The surface hole will be drilled with fresh water and lost circulation materials as needed. The remaining hole will be drilled with brine water with necessary additives.
- (7) Logging program: If no water flow(s) are encountered, we will run Neutron Litho density-DLL logs. If water flow(s) are encountered, no open hole logging will be attempted, and after casing is set, cased hole GR/CN logs will be run. No other testing or coring is anticipated.

- (8) Abnormal pressures or hazards: No abnormal pressures or potential hazards are anticipated. The maximum anticipated bottom hole pressure is 1000#. The maximum anticipated bottom hole temperature is 91°F.
- (9) Other facets of the operation to be pointed out:
None.

(B) HYDROGEN SULFIDE DRILLING PROGRAM

(1) Hydrogen Sulfide Training

All personnel, whether regularly assigned, contracted, or employed on an unscheduled basis, will receive training from a qualified instructor in the following areas prior to commencing drilling operations on this well:

- a. The hazards and characteristics of Hydrogen Sulfide (H₂S).
- b. The proper use and maintenance of personal protective equipment and life support systems.
- c. The proper use of H₂S detectors, alarms, warning systems, briefing areas, evacuation procedures and prevailing wind.
- d. The proper techniques for first aid and rescue procedures.

In addition, supervisory personnel will be trained in the following areas:

- a. The effects of H₂S on metal components. If high tensile tubulars are to be used, personnel will be trained in their special maintenance requirements.
- b. Corrective action and shut-in procedures when drilling or reworking a well, blowout prevention and well control procedures.
- c. The contents and requirements of the H₂S Drilling Operations Plan and the Public Protection Plan (if applicable.)

There will be an initial training session just prior to encountering a known or probable H₂S zone (within 3 days or 500 feet) and weekly H₂S and well control drills for all personnel in each crew. The initial training session shall include a review of the site specific H₂S Drilling Operations Plan and the Public Protection Plan (if applicable). This plan shall be available at the wellsite. All personnel will be required to carry documentation that they have received the proper training.

(2) H2S SAFETY EQUIPMENT AND SYSTEMS

Note: all H2S safety equipment and systems will be installed, tested and operational when drilling reaches a depth of 500 feet above, or three days prior to penetrating the first zone containing or reasonably expected to contain H2S.

a. Well Control Equipment:

1. Choke manifold with a minimum of one remote-controlled choke.
2. The Hydril BOP will accommodate all pipe sizes with a properly sized closing unit.

b. Protective equipment for essential personnel:

1. Mark II Surviveair (or equivalent) 30 minute units located in the dog house and at the primary briefing area(to be determined.)

c. H2S detection and monitoring equipment:

1. Three(3) portable H2S monitors positioned on location for best coverage and response. These units have warning lights and audible sirens when H2S levels of 20 PPM are reached.

d. Visual warning systems:

1. Wind direction indicators will be positioned for maximum visibility.
2. Caution/Danger signs shall be posted on roads providing direct access to location. Signs will be painted a high visibility yellow with black lettering of sufficient size to be readable at reasonable distance from the immediate location. Bilingual signs will be used when appropriate.

e. Mud program:

1. The mud program has been designed to minimize the volume of H2S circulated to the surface. Proper mud weight, safe drilling practices and the use of H2S scavengers will minimize hazards when penetrating H2S bearing zones.

f. Metallurgy:

1. All drill strings, casings, tubing, wellheads, Hydril BOPS, drilling spools, kill lines, choke manifold, valves and lines will be suitable for H2S service.
2. All elastomers used for packing and seals shall be H2S trim.

g. Communication:

1. Cellular Telephone and/or 2-way radio will be provided at wellsite.
2. Landline telephone is located in field office.

h. Well testing:

1. Drill stem testing or coring may be done in this well bore. Completion testing, if required, will be conducted under the same Applicable H2S guidelines that were used in drilling.

(C) SURFACE USE PROGRAM

- (1) Existing roads: Exhibits A, B and C show maps of the general area. From Loco Hills, New Mexico, go east on U.S. Highway 82 approximately 3 miles. Turn north on County road 220 (Square Lake) and go approximately 1.2 miles and turn left (N-NW). Go approximately .9 miles and turn right and go approximately 600' and follow to the Gissler B #38 location.
- (2) Access roads to be constructed: An additional access road will be required from the pre-existing road. Proposed road will be an approximate 250' off pre-existing road.
- (3) Location of existing wells: See Exhibit A.
- (4) Location of existing or proposed production facilities: See Exhibit A for location of existing Gissler B3-3 production facility on the lease. We propose to above ground commingle this Cedar Lake, Yeso production with the approved existing Yeso & Grayburg production by laying approximately 2950' of new flowline from this well pad to the existing flowline ROW to the Gissler B #3-3 Tank Battery.
- (5) Location and type of water supply: All water to be used in drilling the well will be brine or fresh water trucked from Loco Hills, New Mexico or fresh or produced water furnished by our waterflood facilities.

- (6) Construction materials: Construction material will be caliche which may be available at the proposed location. If not available on location or road, caliche will be hauled from nearest approved caliche pit.
- (7) Methods of handling waste disposal: Drill cuttings will be disposed of in the lined reserve drilling pit. Auxiliary emergency water containment pits may be necessitated by large volume water flows and these pits, which will hold only water, will not be lined. All drilling fluids will be allowed to evaporate after drilling is completed, at which time pits will be back filled, leveled and reseeded. Trash, waste paper, garbage and junk will be placed in a portable screened trash container on location. All trash and debris will be transported to an authorized disposal station within 30 days following completion activities. Oil and/or water produced during testing operations will be stored in steel tanks until either sold or disposed of through one of our approved disposal methods.
- (8) Ancillary Facilities: There are no planned ancillary facilities.
- (9) Well site layout: Exhibit D shows the relative location and dimensions of the drilling pad and related components. Only minor differences, if any, in length and/or width of the drilling pad are anticipated, depending on which drilling contractor is selected to drill the well. Only minor leveling of the drilling site is anticipated.
- (10) Plans for restoration of the surface:
 - (a) After drilling and successful completion operations are finished, all equipment and other materials not required for normal production operations will be removed. Pits will be backfilled, leveled and re-seeded. Well site will be left in a neat condition.
 - (b) Any unguarded pits containing fluid will be fence until backfilled.
 - (c) After abandonment of the well, surface restoration will be in accordance with regulations of the SMA. Pits will be backfilled and location will be cleaned. The pit area, well pad and all unneeded access roads will be ripped to promote revegetation. Rehabilitation should be accomplished within 90 days after abandonment.
- (11) Surface ownership: All lands are Federal.

(12) Other information: The topography of the area is relatively flat, with small hills and sand dunes. The soil is fine, deep sand underlain by caliche. Vegetation cover is generally sparse and consists of mesquite, yucca, oak shinners and sparse native grasses. Wildlife in the area is typical of that of semi-arid lands and includes coyotes, rabbits, rodents, reptiles, dove and quail. There are no ponds, streams or residences in the area. There is intermittent cattle grazing and hunting in the area; however, the principal land use is for oil and gas production. An archaeological clearance report will be sent to you by a BLM approved archaeological service.

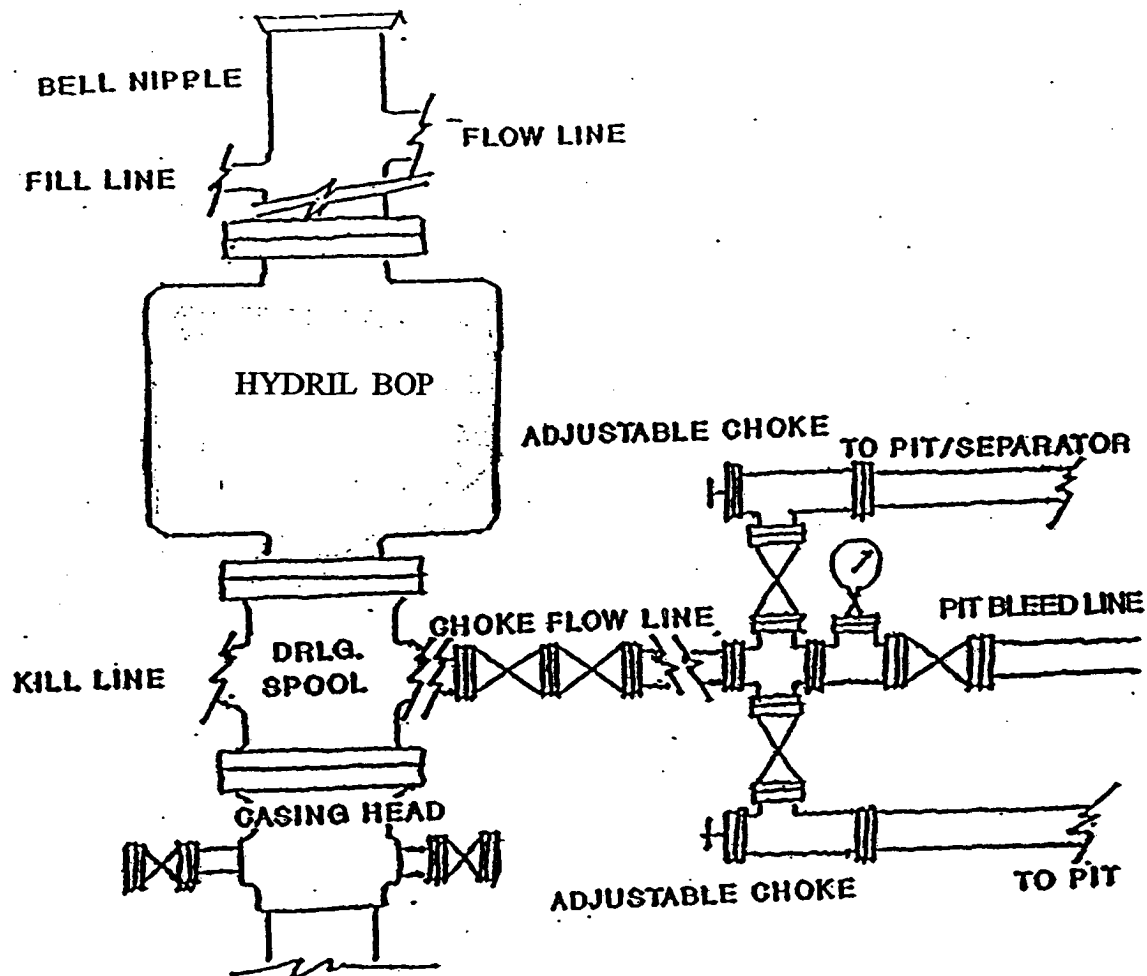
(13) Operator's representative: Our field representative responsible for compliance with the approved surface use and operations plan is:

Mr. Belton Mathews, District Supt.
P.O. Box 188
Loco Hills, New Mexico 88255
Office phone: 505-677-2313
Home phone: 505-677-2358
Cellular phone: 505-746-7979

I hereby certify that I, or persons under my direct supervision have inspected the drill site and access route; that I am familiar with the conditions that currently exist; that the statements made in this plan are to the best of my knowledge, true and correct; and that the work associated with operations proposed herein will be performed by Burnett Oil Co., Inc. and its contractors and subcontractors in conformity with this plan and the terms and conditions under which it is approved. This statement is subject to the provisions of 18 U.S.C. 1001 for the filing of a false statement.

Date: May 26, 2005

By: Sterling P. Randolph
Sterling P. Randolph
Petroleum Engineer



BURNETT OIL CO., INC.

**BLOWOUT PREVENTER &
CHOKE MANIFOLD DIAGRAM
2000 PSI WORKING PRESSURE
SERIES 600 FLANGES**

**GISSLER B #38
EXHIBIT "E"**

CONDITIONS OF APPROVAL - DRILLING

Operator's Name: Burnett Oil Co., Inc.
Well Name & No. Gissler B #38
Location: 750' 990' FNL, 2310' FWL, Section 14, T. 17 S., R. 30 E., Eddy County, New Mexico
Lease: NMNM-2748 *per attached SW dated 8/15/05 CAR*

I. DRILLING OPERATIONS REQUIREMENTS:

1. The Bureau of Land Management (BLM) is to be notified at the Carlsbad Field Office, 620 East Greene St., Carlsbad, NM 88220, (505) 361-2822 for wells in Eddy County in sufficient time for a representative to witness:
 - A. Well spud
 - B. Cementing casing 9-5/8 inch 7 inch
 - C. BOP tests
2. A Hydrogen Sulfide (H₂S) Drilling Operation Contingency Plan shall be activated prior to drilling into the Grayburg formation. A copy of the plan shall be posted at the drilling site.
3. Unless the production casing has been run and cemented or the well has been properly plugged, the drilling rig shall not be removed from over the hole without prior approval.
4. Submit a Sundry Notice (Form 3160-5, one original and five copies) for each casing string, describing the casing and cementing operations. Include pertinent information such as; spud date, hole size, casing (size, weight, grade and thread type), cement (type, quantity and top), water zones and problems or hazards encountered. The Sundry shall be submitted within 15 days of completion of each casing string. The reports may be combined into the same Sundry if they fall within the same 15 day time frame.
5. The API No. assigned to the well by NMOCD shall be included on the subsequent report of setting the first casing string.

II. CASING:

1. The 9-5/8 inch surface casing shall be set at approximately 275 feet in the Rustler Anhydrite or in the case the salt occurs at a shallower depth, above the top of the salt. The surface casing shoe shall be set in the anhydrite to ensure adequate sealing. The operator is required to use an excess of 100% cement volume to fill the annulus. If cement does not circulate to the surface the operator may then use ready-mix cement to fill the remaining annulus.
2. The minimum required fill of cement behind the 7 inch production casing is to be sufficient to place the top of the cement at least 200 feet above the top of the uppermost hydrocarbon bearing interval or to the base of the salt.

III. PRESSURE CONTROL:

1. All BOP systems and related equipment shall comply with well control requirements as described in Onshore Oil and Gas Order No. 2. The BOP and related equipment shall be installed and operational before drilling below the 9-5/8 inch casing shoe and shall be tested as described in Onshore Order No. 2. Any equipment failing to test satisfactorily shall be repaired or replaced.
2. Minimum working pressure of the blowout preventer and related equipment (BOPE) shall be 2000 psi.
3. The appropriate BLM office shall be notified in sufficient time for a representative to witness the tests.
 - The tests shall be done by an independent service company.
 - The results of the test shall be reported to the appropriate BLM office.
 - Testing fluid must be water or an appropriate clear liquid suitable for sub-freezing temperatures. Use of drilling mud for testing is not permitted since it can mask small leaks.
 - Testing must be done in a safe workman-like manner. Hard line connections shall be required.

CCCC

May 25, 2005

New Mexico Oil Conservation Division
1301 Grand Avenue
Artesia, New Mexico 88210
Attn: Mr. Byran Arrant

Re: H2S Rule 118 Contingency Plan.
Gissler B #38, Unit C, 990' FNL, 2310' FWL
SEC.14, T17S, R30E- Eddy County, New Mexico

RECEIVED

MAY 31 2005

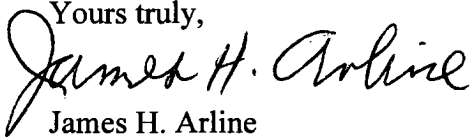
ODD:AFITEAM

Dear Mr. Arrant:

Please accept this letter as our notice we do not believe the referenced plan is required for the referenced well. We have calculated the hazard volume as follows: highest H2S quantity 10,000 PPM, and using a production rate of 255 MCFGPD the 100 PPM radius is 181' and the 500 PPM radius is 83'. This footage does not get off our well locations.

Please contact our Mr. Sterling Randolph or the undersigned if you require additional information.

Yours truly,



James H. Arline
Materials Coordinator