

District I
1625 N. French Dr., Hobbs, NM 88240
District II
1301 W. Grand Avenue, Artesia, NM 88210
District III
1000 Rio Brazos Road, Aztec, NM 87410
District IV
1220 S. St. Francis Dr., Santa Fe, NM 87505

State of New Mexico
Energy Minerals and Natural Resources
Department
Oil Conservation Division
1220 South St. Francis Dr.
Santa Fe, NM 87505

Form C-144 CLEZ
July 21, 2008

For closed-loop systems that only use above ground steel tanks or haul-off bins and propose to implement waste removal for closure, submit to the appropriate NMOCD District Office.

Closed-Loop System Permit or Closure Plan Application

(that only use above ground steel tanks or haul-off bins and propose to implement waste removal for closure)

Type of action: ☒ Permit ☐ Closure

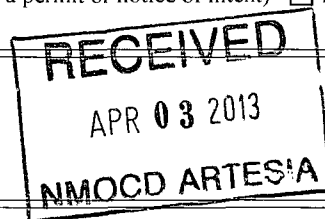
Instructions: Please submit one application (Form C-144 CLEZ) per individual closed-loop system request. For any application request other than for a closed-loop system that only use above ground steel tanks or haul-off bins and propose to implement waste removal for closure, please submit a Form C-144.

Please be advised that approval of this request does not relieve the operator of liability should operations result in pollution of surface water, ground water or the environment. Nor does approval relieve the operator of its responsibility to comply with any other applicable governmental authority's rules, regulations or ordinances.

1.
Operator: Devon Energy Production Co., LP OGRID #: 6137
Address: 333 W. Sheridan Avenue OKC, OK 73102-8260
Facility or well name: Lone Ranger 33 State 2H
API Number 30-015-41240 OCD Permit Number: 214185
U/L or Qtr/Qtr I Section 33 Township 23S Range 27E County: Eddy County, NM
Center of Proposed Design: Latitude _____ Longitude _____ NAD: ☐ 1927 ☐ 1983
Surface Owner: ☒ Federal ☐ State ☐ Private ☐ Tribal Trust or Indian Allotment

2.
☒ **Closed-loop System:** Subsection H of 19.15.17.11 NMAC
Operation: ☒ Drilling a new well ☐ Workover or Drilling (Applies to activities which require prior approval of a permit or notice of intent) ☐ P&A
☒ Above Ground Steel Tanks or ☒ Haul-off Bins

3.
Signs: Subsection C of 19.15.17.11 NMAC
☐ 12"x 24", 2" lettering, providing Operator's name, site location, and emergency telephone numbers
☒ Signed in compliance with 19.15.3.103 NMAC



4.
Closed-loop Systems Permit Application Attachment Checklist: Subsection B of 19.15.17.9 NMAC
Instructions: Each of the following items must be attached to the application. Please indicate, by a check mark in the box, that the documents are attached.
☒ Design Plan - based upon the appropriate requirements of 19.15.17.11 NMAC
☒ Operating and Maintenance Plan - based upon the appropriate requirements of 19.15.17.12 NMAC
☒ Closure Plan (Please complete Box 5) - based upon the appropriate requirements of Subsection C of 19.15.17.9 NMAC and 19.15.17.13 NMAC
☐ Previously Approved Design (attach copy of design) API Number: _____
☐ Previously Approved Operating and Maintenance Plan API Number: _____

5.
Waste Removal Closure For Closed-loop Systems That Utilize Above Ground Steel Tanks or Haul-off Bins Only: (19.15.17.13.D NMAC)
Instructions: Please identify the facility or facilities for the disposal of liquids, drilling fluids and drill cuttings. Use attachment if more than two facilities are required.
Disposal Facility Name: CRI Disposal Facility Permit Number: R9166
Disposal Facility Name: _____ Disposal Facility Permit Number: _____
Will any of the proposed closed-loop system operations and associated activities occur on or in areas that will not be used for future service and operations?
☐ Yes (If yes, please provide the information below) ☒ No
Required for impacted areas which will not be used for future service and operations:
☐ Soil Backfill and Cover Design Specifications - based upon the appropriate requirements of Subsection H of 19.15.17.13 NMAC
☐ Re-vegetation Plan - based upon the appropriate requirements of Subsection I of 19.15.17.13 NMAC
☐ Site Reclamation Plan - based upon the appropriate requirements of Subsection G of 19.15.17.13 NMAC

6.
Operator Application Certification:
I hereby certify that the information submitted with this application is true, accurate and complete to the best of my knowledge and belief.
Name (Print): Ryan DeLong Title: Regulatory Compliance Professional
Signature: Date: 4/1/2013
e-mail address: ryan.delong@devon.com Telephone: 405.552.6559

7.
OCD Approval: ☒ Permit Application (including closure plan) ☐ Closure Plan (only)

OCD Representative Signature: RLWade

Approval Date: 4/11/13

Title: Asst Dir

OCD Permit Number: 214185

8.
Closure Report (required within 60 days of closure completion): Subsection K of 19.15.17.13 NMAC

Instructions: Operators are required to obtain an approved closure plan prior to implementing any closure activities and submitting the closure report. The closure report is required to be submitted to the division within 60 days of the completion of the closure activities. Please do not complete this section of the form until an approved closure plan has been obtained and the closure activities have been completed.

☐ Closure Completion Date: _____

9.
Closure Report Regarding Waste Removal Closure For Closed-loop Systems That Utilize Above Ground Steel Tanks or Haul-off Bins Only:

Instructions: Please indentify the facility or facilities for where the liquids, drilling fluids and drill cuttings were disposed. Use attachment if more than two facilities were utilized.

Disposal Facility Name: _____

Disposal Facility Permit Number: _____

Disposal Facility Name: _____

Disposal Facility Permit Number: _____

Were the closed-loop system operations and associated activities performed on or in areas that *will not* be used for future service and operations?

☐ Yes (If yes, please demonstrate compliance to the items below) ☐ No

Required for impacted areas which will not be used for future service and operations:

☐ Site Reclamation (Photo Documentation)

☐ Soil Backfilling and Cover Installation

☐ Re-vegetation Application Rates and Seeding Technique

10.
Operator Closure Certification:

I hereby certify that the information and attachments submitted with this closure report is true, accurate and complete to the best of my knowledge and belief. I also certify that the closure complies with all applicable closure requirements and conditions specified in the approved closure plan.

Name (Print): _____

Title: _____

Signature: _____

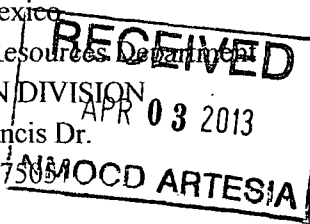
Date: _____

e-mail address: _____

Telephone: _____

District I
1625 N. French Dr., Hobbs, NM 88240
Phone: (575) 393-6161 Fax: (575) 393-0720
District II
811 S. First St., Artesia, NM 88210
Phone: (575) 748-1283 Fax: (575) 748-9720
District III
1000 Rio Brazos Road, Aztec, NM 87410
Phone: (505) 334-6173 Fax: (505) 334-6170
District IV
1220 S. St. Francis Dr., Santa Fe, NM 87505
Phone: (505) 476-3460 Fax: (505) 476-3462

State of New Mexico
Energy, Minerals & Natural Resources Department
OIL CONSERVATION DIVISION
1220 South St. Francis Dr.
Santa Fe, NM 87505



Form C-102
Revised August 1, 2011
Submit one copy to appropriate
District Office
☐ AMENDED REPORT

WELL LOCATION AND ACREAGE DEDICATION PLAT

¹ API Number	² Pool Code	³ Pool Name Forehand Ranch; Bone Spring
⁴ Property Code	⁵ Property Name LONE RANGER 33 STATE	⁶ Well Number 2H
⁷ OGRID No. 6137	⁸ Operator Name DEVON ENERGY PRODUCTION COMPANY, L.P.	⁹ Elevation 3111.2

¹⁰ Surface Location

UL or lot no.	Section	Township	Range	Lot Idn	Feet from the	North/South line	Feet from the	East/West line	County
I	33	23 S	27 E		1895	SOUTH	50	EAST	EDDY

¹¹ Bottom Hole Location If Different From Surface

UL or lot no.	Section	Township	Range	Lot Idn	Feet from the	North/South line	Feet from the	East/West line	County
L	33	23 S	27 E		1980	SOUTH	330	WEST	EDDY

¹² Dedicated Acres 160 ac.	¹³ Joint or Infill	¹⁴ Consolidation Code	¹⁵ Order No.
--	-------------------------------	----------------------------------	-------------------------

No allowable will be assigned to this completion until all interests have been consolidated or a non-standard unit has been approved by the division.

<p>S89°58'54"W 2642.57 FT</p> <p>NW CORNER SEC. 33 LAT. = 32.2683629°N LONG. = 104.2035059°W NMSP EAST (FT) N = 461387.72 E = 581464.80</p>		<p>S89°58'54"W 2642.57 FT</p> <p>N/4 CORNER SEC. 33 COMPUTED</p>		<p>S89°58'54"W 2642.57 FT</p> <p>NE CORNER SEC. 33 LAT. = 32.2683488°N LONG. = 104.1864196°W NMSP EAST (FT) N = 461389.41 E = 586748.66</p>	
<p>S00°59'56"W 2633.24 FT</p> <p>W/4 CORNER SEC. 33 LAT. = 32.2611274°N LONG. = 104.2036647°W NMSP EAST (FT) N = 458755.53 E = 581418.90</p>		<p>LONE RANGER 33 STATE #2H ELEV. = 3111.2' LAT. = 32.2591686°N (NAD83) LONG. = 104.1867965°W NMSP EAST (FT) N = 458049.65 E = 586633.96</p>		<p>N01°06'36"E 2618.27 FT</p> <p>E/4 CORNER SEC. 33 COMPUTED</p>	
<p>S01°09'38"W 2621.47 FT</p> <p>BOTTOM OF HOLE LAT. = 32.2593674°N LONG. = 104.2026421°W NMSP EAST (FT) N = 458115.62 E = 581735.78</p>		<p>330'</p>		<p>50'</p> <p>SURFACE LOCATION</p>	
<p>S01°09'38"W 2621.47 FT</p> <p>SW CORNER SEC. 33 LAT. = 32.2539247°N LONG. = 104.2038467°W NMSP EAST (FT) N = 456135.23 E = 581365.81</p>		<p>S/4 CORNER SEC. 33 LAT. = 32.2539436°N LONG. = 104.1953040°W NMSP EAST (FT) N = 456145.40 E = 584006.60</p>		<p>S01°06'36"E 2618.27 FT</p> <p>SE CORNER SEC. 33 LAT. = 32.2539607°N LONG. = 104.1867619°W NMSP EAST (FT) N = 456155.12 E = 586647.24</p>	
<p>N89°46'45"E 2641.45 FT</p>		<p>N89°47'21"E 2641.30 FT</p>			

¹⁷ OPERATOR CERTIFICATION
I hereby certify that the information contained herein is true and complete to the best of my knowledge and belief, and that this organization either owns a working interest or unleased mineral interest in the land including the proposed bottom hole location or has a right to drill this well at this location pursuant to a contract with an owner of such a mineral or working interest, or to a voluntary pooling agreement or a compulsory pooling order heretofore entered by the division.

Signature: Date: 4/2/2013

Printed Name: Ryan DeLong

E-mail Address: ryan.delong@dvn.com

¹⁸ SURVEYOR CERTIFICATION
I hereby certify that the well location shown on this plat was plotted from field notes of actual surveys made by me or under my supervision, and that the same is true and correct to the best of my belief.

MARCH 14, 2013

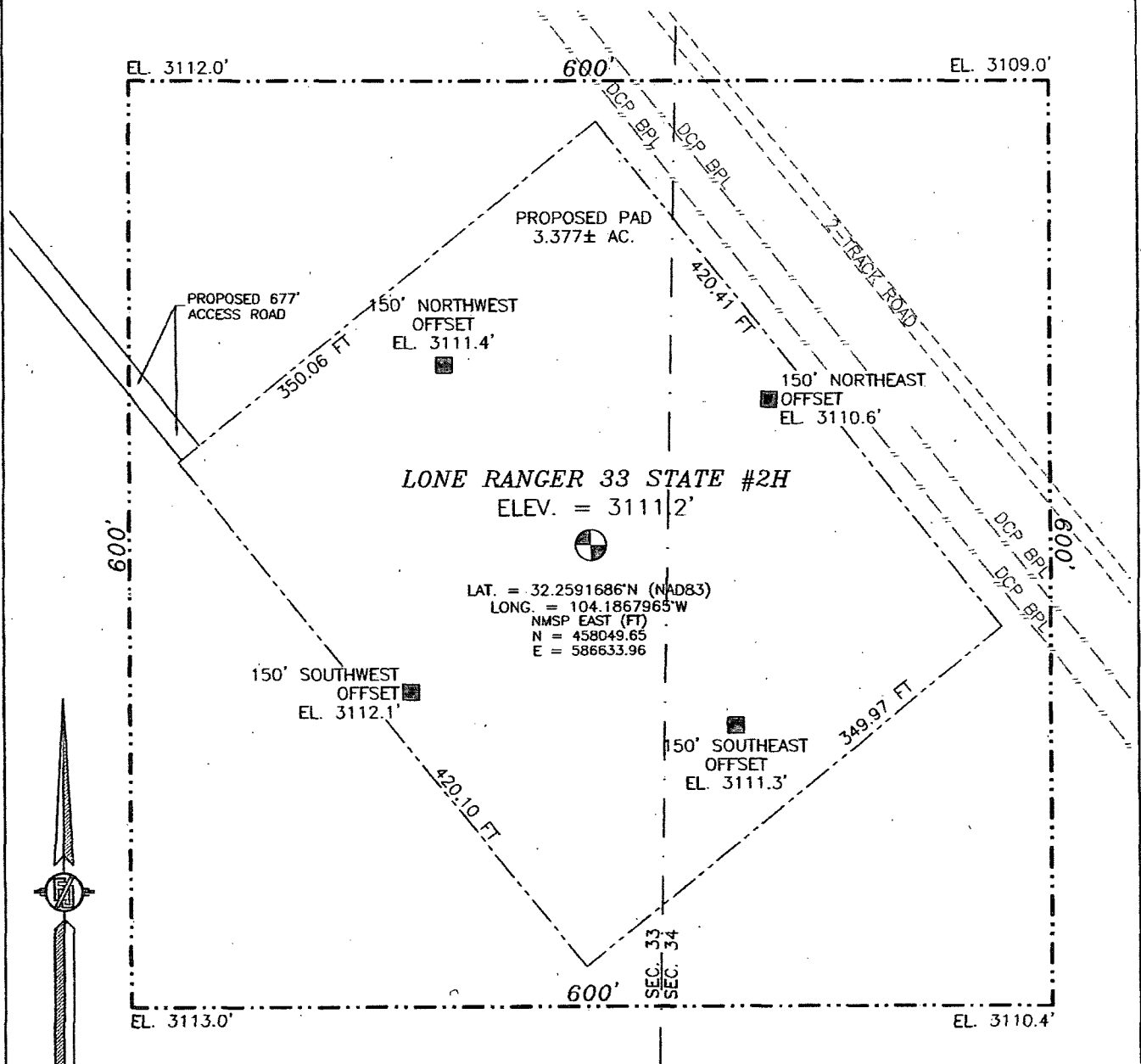
Date of Survey

Signature and Seal of Professional Surveyor:

Certificate Number: FILMON F. JARAMILLO, PLS 12797

SURVEY NO. 1674

SECTION 33, TOWNSHIP 23 SOUTH, RANGE 27 EAST, N.M.P.M.
EDDY COUNTY, STATE OF NEW MEXICO



010 50 100 200

SCALE 1" = 100'
DIRECTIONS TO LOCATION

FROM THE INTERSECTION OF CO. RD. 748 (OLD CAVERN HIGHWAY) &
CO. RD. 763 (BOUNDS) GO EAST ON 763 APPROX. 1.9 MILES TO A
BEGIN ROAD LATH. GO SE APPROX. 900' TO LOCATION.

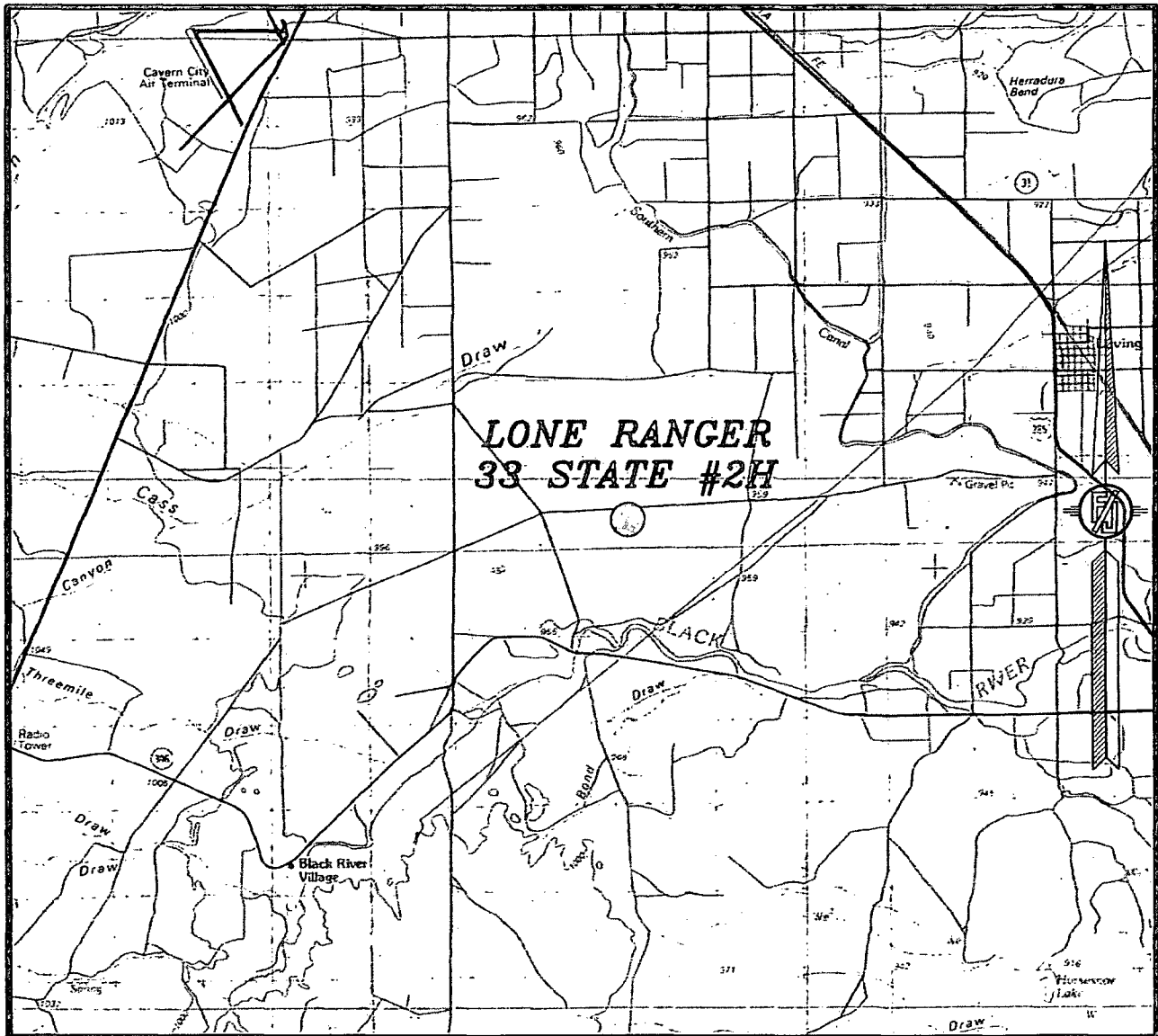
DEVON ENERGY PRODUCTION COMPANY, L.P.
LONE RANGER 33 STATE #2H
LOCATED 1895 FT. FROM THE SOUTH LINE
AND 50 FT. FROM THE EAST LINE OF
SECTION 33, TOWNSHIP 23 SOUTH,
RANGE 27 EAST, N.M.P.M.
EDDY COUNTY, STATE OF NEW MEXICO

MARCH 14, 2013

SURVEY NO. 1674

MADRON SURVEYING, INC. 301 SOUTH CANAL (575) 234-3341 CARLSBAD, NEW MEXICO

SECTION 33, TOWNSHIP 23 SOUTH, RANGE 27 EAST, N.M.P.M.
EDDY COUNTY, STATE OF NEW MEXICO
VICINITY MAP



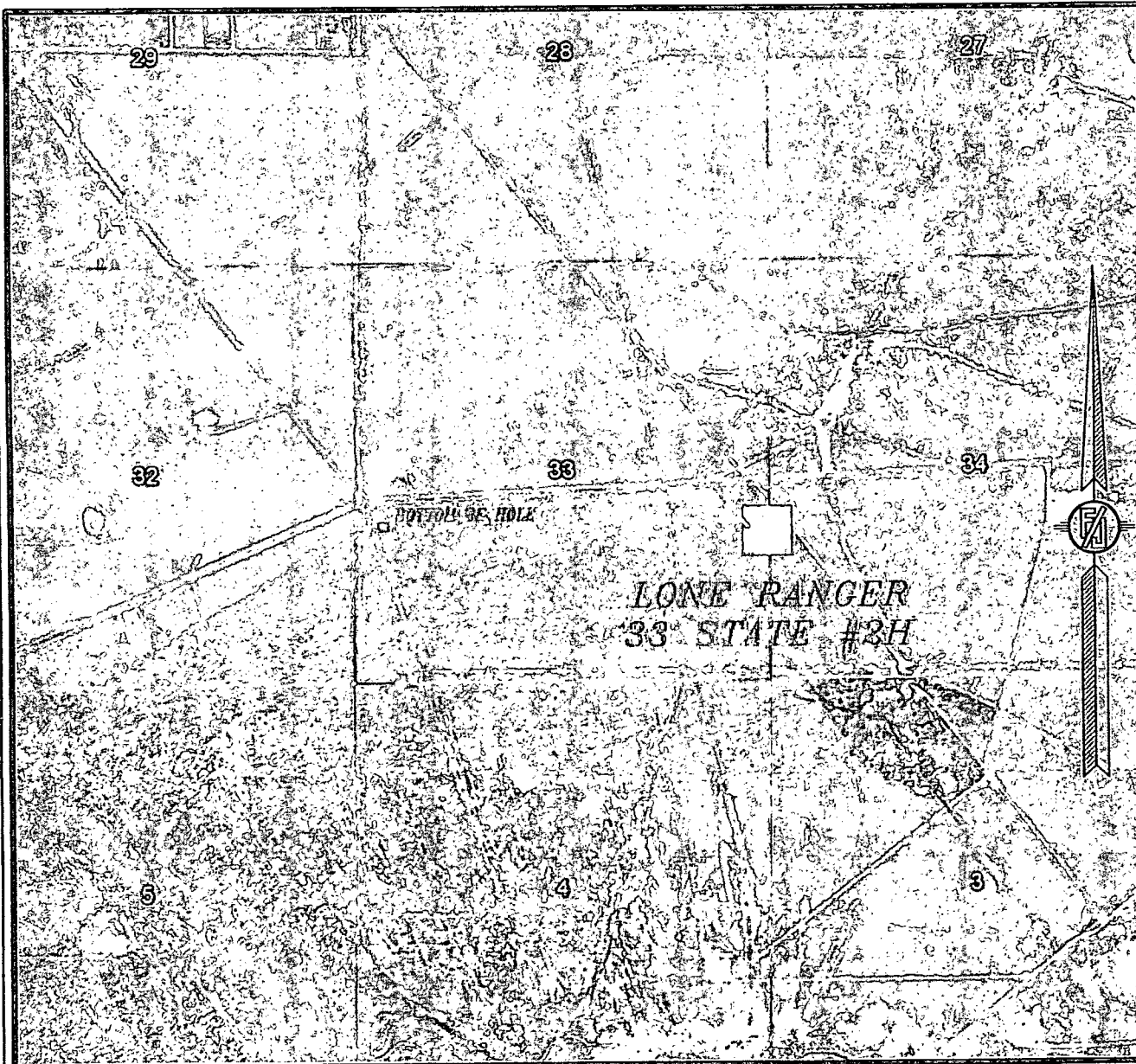
NOT TO SCALE

DEVON ENERGY PRODUCTION COMPANY, L.P.
LONE RANGER 33 STATE #2H
LOCATED 1895 FT. FROM THE SOUTH LINE
AND 50 FT. FROM THE EAST LINE OF
SECTION 33, TOWNSHIP 23 SOUTH,
RANGE 27 EAST, N.M.P.M.
EDDY COUNTY, STATE OF NEW MEXICO

MARCH 14, 2013

MADRON SURVEYING, INC. 301 SOUTH CANAL (575) 234-3341 CARLSBAD, NEW MEXICO SURVEY NO. 1674

SECTION 33, TOWNSHIP 23 SOUTH, RANGE 27 EAST, N.M.P.M.
EDDY COUNTY, STATE OF NEW MEXICO
AERIAL PHOTO



NOT TO SCALE
AERIAL PHOTO:
GOOGLE EARTH
JUNE 2011

DEVON ENERGY PRODUCTION COMPANY, L.P.
LONE RANGER 33 STATE #2H

LOCATED 1895 FT. FROM THE SOUTH LINE
AND 50 FT. FROM THE EAST LINE OF
SECTION 33, TOWNSHIP 23 SOUTH,
RANGE 27 EAST, N.M.P.M.
EDDY COUNTY, STATE OF NEW MEXICO

MARCH 14, 2013

SURVEY NO. 1674

MADRON SURVEYING, INC. 301 SOUTH CANAL CARLSBAD, NEW MEXICO
(575) 234-3341