

Bratcher, Mike, EMNRD

From: Warnell, Terry <twarnell@slo.state.nm.us>
Sent: Wednesday, March 06, 2013 2:18 PM
To: Dawson, Scott, EMNRD
Cc: Bratcher, Mike, EMNRD
Subject: FW: Cedar Lake Well Location - site review
Attachments: Cedar Lake Well review.pdf

From: Holm, Anchor
Sent: Wednesday, March 06, 2013 2:13 PM
To: Warnell, Terry
Subject: Cedar Lake Well Location - site review

Terry,

The proposed well is shown on the 3-2-2012 Google Image as having the well pad built. The well pad is well above the high water line (edge of dark grey soils) of the dry Cedar Lake, which is about 285 feet off the SE corner of the well pad. The well pad is located about 480 feet north of the floodway below Cedar Lake.

I don't see any apparent spillway issues.

Anchor Holm

GeoScientist/Petroleum Engineering Specialist
NM State Land Office
Oil, Gas and Minerals Division
P.O. Box 1148
310 Old Santa Fe Trail
Santa Fe, NM 87504-1148
Ph. 505-827-5759
aholm@slo.state.nm.us

This email has been scanned by the Symantec Email Security.cloud service.
For more information please visit <http://www.symanteccloud.com>



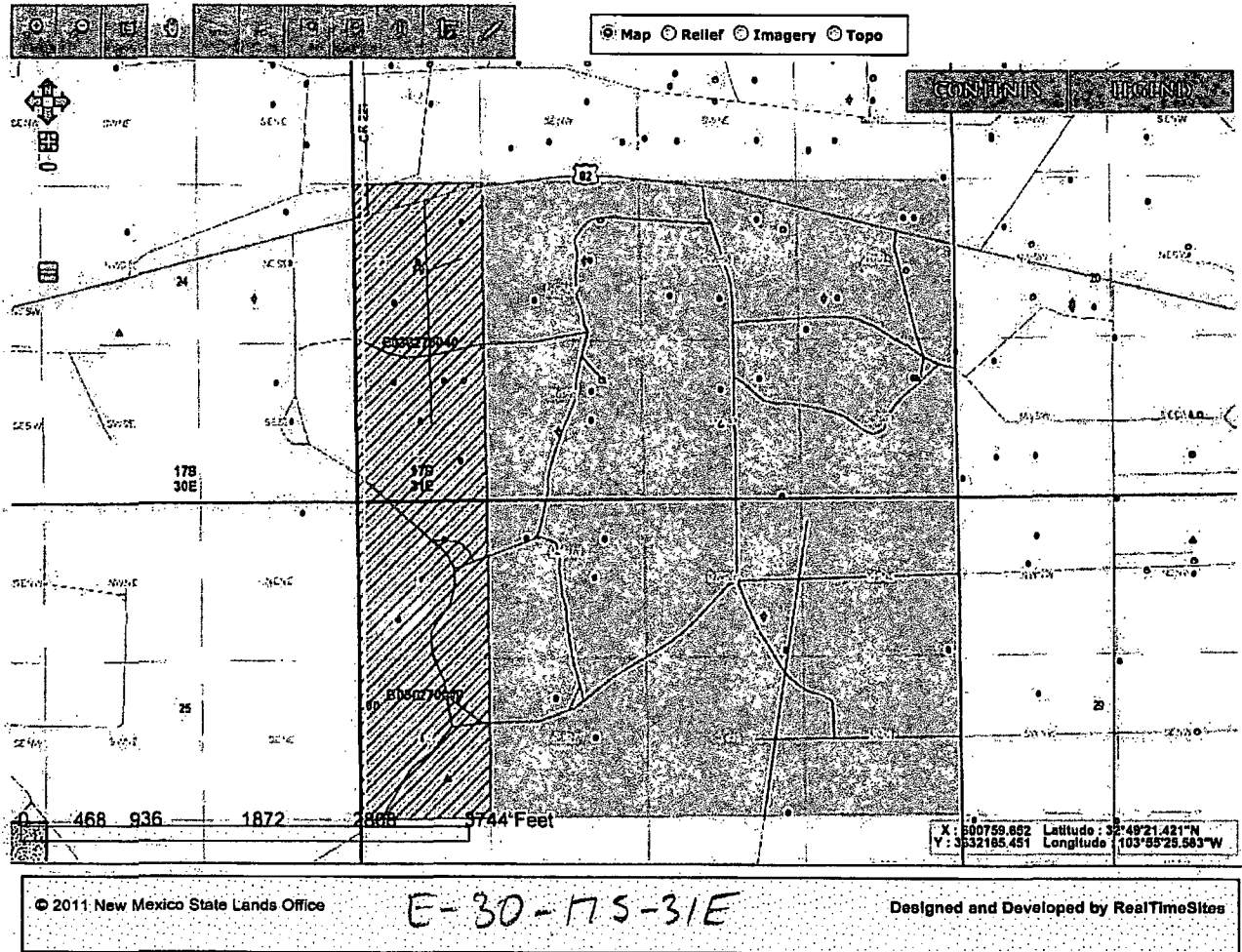
NEW MEXICO
STATE LAND OFFICE

[Home](#) [About the Agency](#) [Employees Access](#) [Contact](#)

Contact Us: (505) 827-5760

[COMMISSIONER](#) [DIVISIONS](#) [RESOURCES](#) [COMMUNICATIONS](#) [EVENTS](#) [TRUST STEWARDSHIP](#) [GIS MAP](#)

Oil and Gas, Minerals Map Service





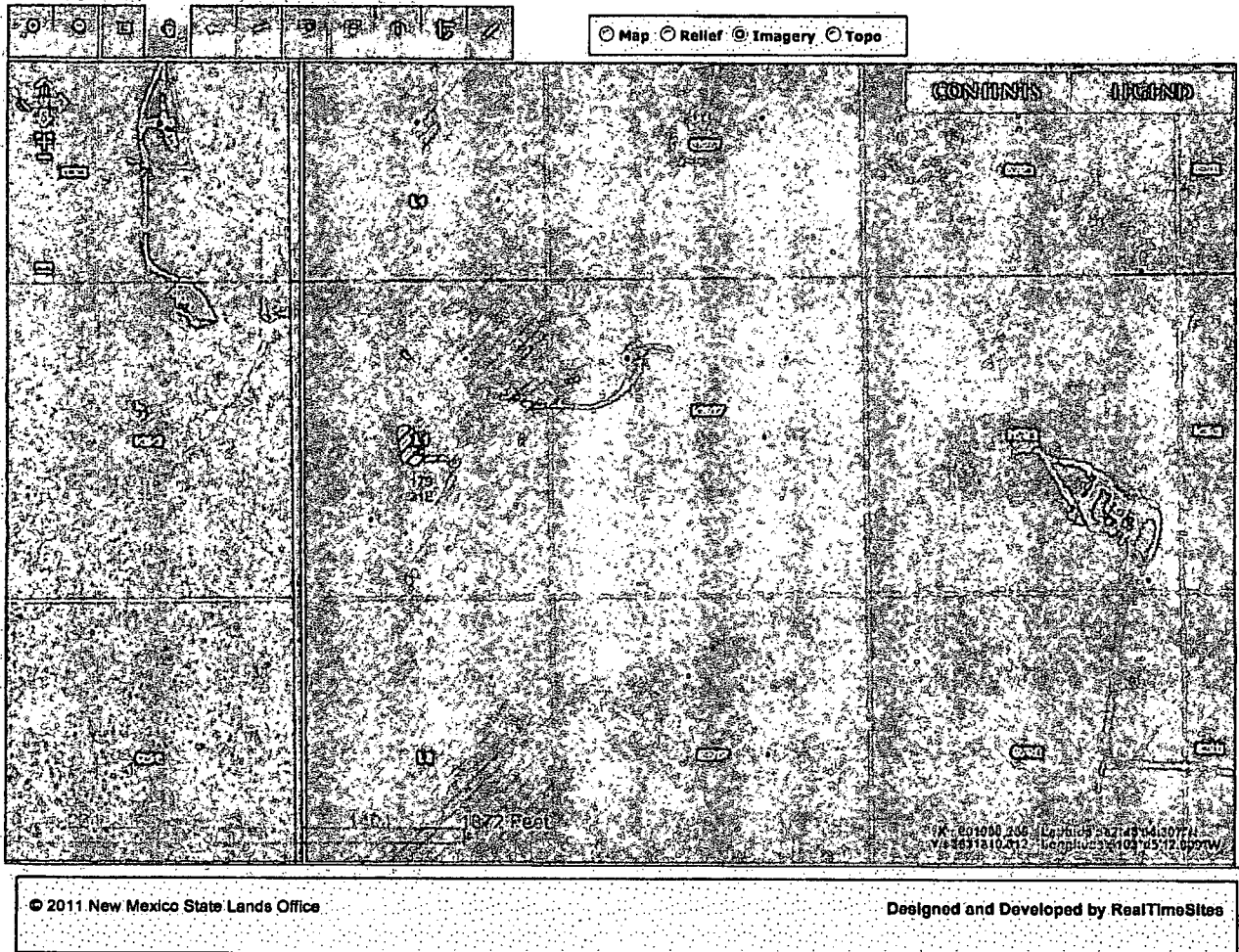
NEW MEXICO
STATE LAND OFFICE

[Home](#) [About the Agency](#) [Employees Access](#) [Contact](#)

Contact Us: (505) 827-5760

[COMMISSIONER](#) [DIVISIONS](#) [RESOURCES](#) [COMMUNICATIONS](#) [EVENTS](#) [TRUST STEWARDSHIP](#) [GIS MAP](#)

Oil and Gas, Minerals Map Service





NEW MEXICO
STATE LAND OFFICE

[Home](#) [About the Agency](#) [Employees Access](#) [Contact](#)

Contact Us: (505) 827-5760

[COMMISSIONER](#) [DIVISIONS](#) [RESOURCES](#) [COMMUNICATIONS](#) [EVENTS](#) [TRUST STEWARDSHIP](#) [GIS MAP](#)

Oil and Gas, Minerals Map Service

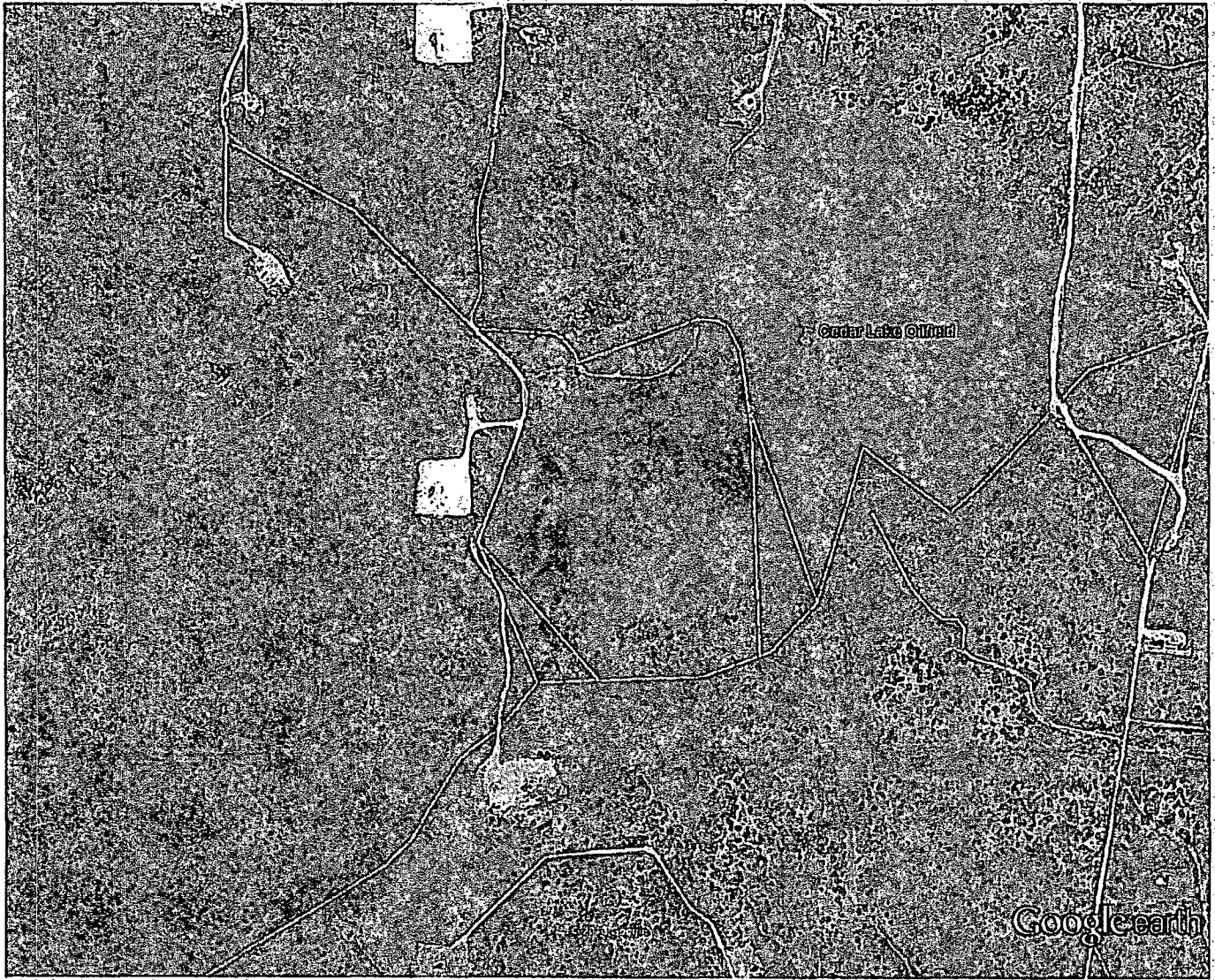
Map Relief Imagery Topo

CONTENTS

- ☐ GIS/Computer Interface
- ☐ Boundary Information
- ☐ Easements
- ☐ Mineral Rights
- ☐ Oil and Gas Leases
- ☐ Public Lands
- ☐ Private Lands
- ☐ State Lands
- ☐ Trust Lands
- ☐ Unappropriated Lands
- ☐ Water Rights
- ☐ Wildlife
- ☐ Zoning

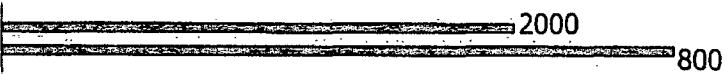
© 2011 New Mexico State Lands Office

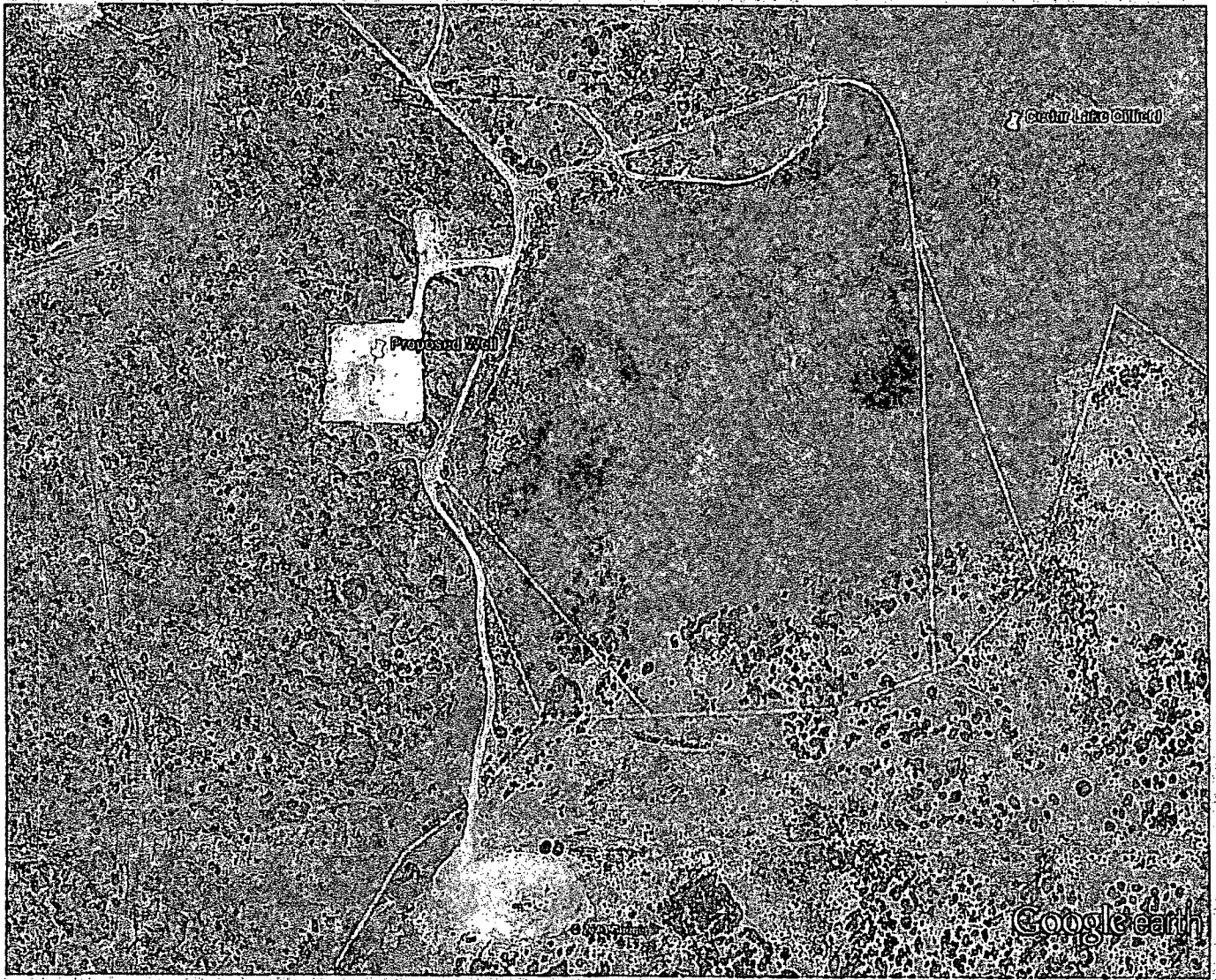
Designed and Developed by RealTimeSites



Google earth

feet
meters

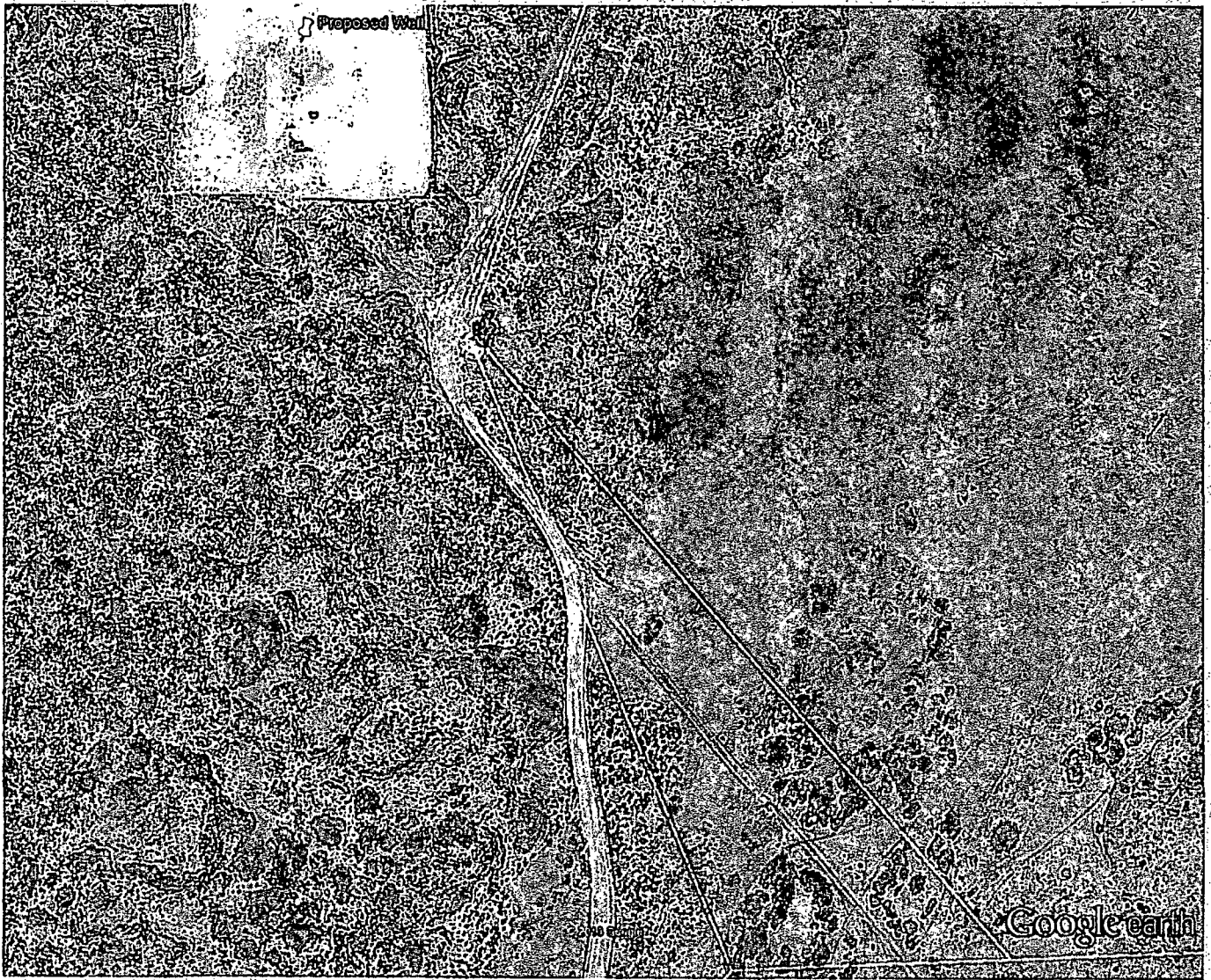




Google earth

feet 1000
meters 400





Google earth

feet 500
meters 100

