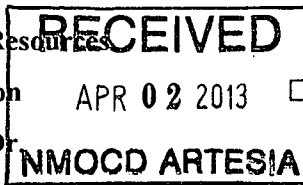


**District I**  
1625 N. French Dr., Hobbs, NM 88240  
Phone: (575) 393-6161 Fax: (575) 393-0720  
**District II**  
811 S. First St., Artesia, NM 88210  
Phone: (575) 748-1283 Fax: (575) 748-9720  
**District III**  
1000 Rio Brazos Road, Aztec, NM 87410  
Phone: (505) 334-6178 Fax: (505) 334-6170  
**District IV**  
1220 S. St. Francis Dr., Santa Fe, NM 87505  
Phone: (505) 476-3460 Fax: (505) 476-3462

State of New Mexico  
Energy Minerals and Natural Resources  
Oil Conservation Division  
1220 South St. Francis Dr.  
Santa Fe, NM 87505

Form C-101  
Revised November 14, 2012



☐ AMENDED REPORT

**APPLICATION FOR PERMIT TO DRILL, RE-ENTER, DEEPEN, PLUGBACK, OR ADD A ZONE**

<sup>1</sup> Operator Name and Address COG Operating LLC, One Concho Center 600 W Illinois Ave Midland, TX 79701		<sup>2</sup> OGRID Number 229137
		<sup>3</sup> API Number 30-015-26270
<sup>4</sup> Property Code 39088	<sup>5</sup> Property Name LAKEWOOD SWD	<sup>6</sup> Well No. #4

**7. Surface Location**

UL - Lot	Section	Township	Range	Lot Idn	Feet from	N/S Line	Feet From	E/W Line	County
6	6	19-S	26-E	6	1953	SOUTH	663	WEST	EDDY

**8. Proposed Bottom Hole Location**

UL - Lot	Section	Township	Range	Lot Idn	Feet from	N/S Line	Feet From	E/W Line	County

**9. Pool Information**

Pool Name SWD, CISCO	Pool Code 96099
-------------------------	--------------------

*RE-ENTRY*

**Additional Well Information**

<sup>11</sup> Work Type <u>NEW WELL</u>	<sup>12</sup> Well Type SWD	<sup>13</sup> Cable/Rotary	<sup>14</sup> Lease Type FEE	<sup>15</sup> Ground Level Elevation 3393'
<sup>16</sup> Multiple N	<sup>17</sup> Proposed Depth 8400'	<sup>18</sup> Formation CANYON	<sup>19</sup> Contractor	<sup>20</sup> Spud Date 04/30/2013
Depth to Ground water		Distance from nearest fresh water well		Distance to nearest surface water

**21. Proposed Casing and Cement Program**

Type	Hole Size	Casing Size	Casing Weight/ft	Setting Depth	Sacks of Cement	Estimated TOC
	7 7/8"	5 1/2"	17 ppf	8,400'	1,375	Surface

**Casing/Cement Program: Additional Comments**

It is COG's intent to re-enter and recompleat this well as a Canyon disposal. Plugs from surface to 7,641 will be drilled out of the 7 7/8" OH. 5 1/2" Casing will be run to +/- 8,200 feet and cemented to surface with DV tool at approximately 7,000'.

**22. Proposed Blowout Prevention Program**

Type	Working Pressure	Test Pressure	Manufacturer

<sup>23</sup> I hereby certify that the information given above is true and complete to the best of my knowledge and belief.

I further certify that I have complied with 19.15.14.9 (A) NMAC ☐ and/or 19.15.14.9 (B) NMAC ☒, if applicable.

Signature:

Printed name: KELLY J. HOLLY

Title: PERMITTING TECH

E-mail Address: kholly@concho.com

Date: 3/28/2013

Phone: 432-685-4384

**OIL CONSERVATION DIVISION**

Approved By:

Title: *Geologist*

Approved Date: 4/3/2013

Expiration Date: 4/3/2015

Conditions of Approval Attached

DISTRICT I  
1625 N. French Dr., Hobbs, NM 88240  
Phone: (575) 393-6161 Fax: (575) 393-0720

DISTRICT II  
811 S. First St., Artesia, NM 88210  
Phone: (575) 748-1283 Fax: (575) 748-9720

DISTRICT III  
1000 Rio Brazos Road, Aztec, NM 87410  
Phone: (505) 334-6178 Fax: (505) 334-6170

DISTRICT IV  
1220 S. St. Francis Dr., Santa Fe, NM 87505  
Phone: (505) 476-3460 Fax: (505) 476-3462

State of New Mexico  
Energy, Minerals & Natural Resources Department  
OIL CONSERVATION DIVISION  
1220 South St. Francis Dr.  
Santa Fe, New Mexico 87505

Form C-102  
Revised August 1, 2011  
Submit one copy to appropriate  
District Office

AMENDED REPORT

WELL LOCATION AND ACREAGE DEDICATION PLAT

API Number 30-015-26270	Pool Code 96099	Pool Name SWD; Cisco
Property Code 39088	Property Name LAKEWOOD SWD	Well Number 4
OGRID No. 229137	Operator Name COG OPERATING, LLC	Elevation 3393'

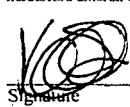
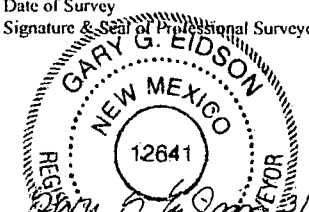
Surface Location

UL or lot No. 6	Section 6	Township 19-S	Range 26-E	Lot Idn	Feet from the 1953	North/South line SOUTH	Feet from the 663	East/West line WEST	County EDDY
--------------------	--------------	------------------	---------------	---------	-----------------------	---------------------------	----------------------	------------------------	----------------

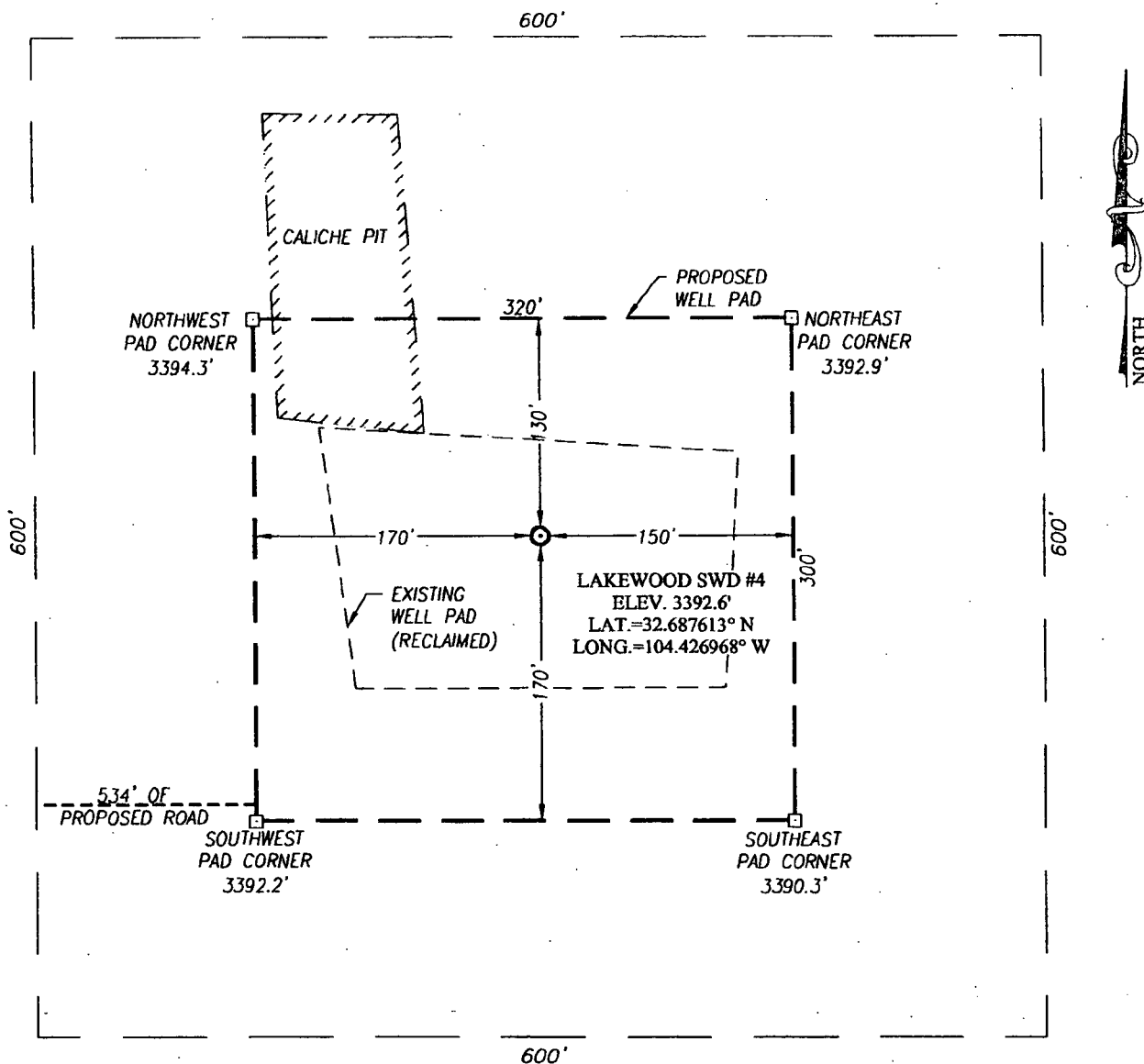
Bottom Hole Location If Different From Surface

UL or lot No.	Section	Township	Range	Lot Idn	Feet from the	North/South line	Feet from the	East/West line	County
Dedicated Acres 40	Joint or Infill	Consolidation Code	Order No. NSL-1406-17						

NO ALLOWABLE WILL BE ASSIGNED TO THIS COMPLETION UNTIL ALL INTERESTS HAVE BEEN CONSOLIDATED OR A NON-STANDARD UNIT HAS BEEN APPROVED BY THE DIVISION

	<p><b>OPERATOR CERTIFICATION</b></p> <p>I hereby certify that the information herein is true and complete to the best of my knowledge and belief, and that this organization either owns a working interest or unleased mineral interest in the land including the proposed bottom hole location or has a right to drill this well at this location pursuant to a contract with an owner of such mineral or working interest, or to a voluntary pooling agreement or a compulsory pooling order heretofore entered by the division.</p> <p> 3-28-13 Signature Date</p> <p>Kelly J. Holly Printed Name</p> <p>kholly@concho.com E-mail Address</p>
	<p><b>SURVEYOR CERTIFICATION</b></p> <p>I hereby certify that the well location shown on this plat was plotted from field notes of actual surveys made by me or under my supervision, and that the same is true and correct to the best of my belief.</p> <p>JANUARY 24, 2013 Date of Survey</p> <p>Signature &amp; Seal of Professional Surveyor: </p>
	<p>Certificate Number: Gary G. Eidson 12641 Ronald J. Eidson 3239</p>
	<p>AF/DSS JWSC W.O.: 13.11.0289</p>

SECTION 6, TOWNSHIP 19 SOUTH, RANGE 26 EAST, N.M.P.M.  
EDDY COUNTY NEW MEXICO

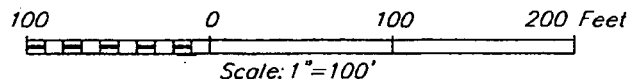


### DIRECTIONS TO LOCATION

FROM THE INTERSECTION OF HWY. #285 (SEVEN RIVERS) AND CO. RD. #38 (KINCAID RANCH) GO WEST APPROX. 2.7 MILES. TURN LEFT AND GO SOUTH APPROX. 0.9 MILES. TURN LEFT AND GO EAST APPROX. 0.9 MILES. TURN RIGHT AND GO SOUTH APPROX. 0.75 MILES. THIS LOCATION IS EAST APPROX. 700 FEET.



PROVIDING SURVEYING SERVICES  
SINCE 1946  
**JOHN WEST SURVEYING COMPANY**  
412 N. DAL PASO  
HOBBS, N.M. 88240  
(575) 393-3117 [www.jwsc.biz](http://www.jwsc.biz)



**COG OPERATING, LLC**

**LAKEWOOD SWD #4 WELL  
LOCATED 1953 FEET FROM THE SOUTH LINE  
AND 663 FEET FROM THE WEST LINE OF SECTION 6,  
TOWNSHIP 19 SOUTH, RANGE 26 EAST, N.M.P.M.,  
EDDY COUNTY, NEW MEXICO**

Survey Date: 1/24/13

CAD Date: 1/29/13

Drawn By: AF

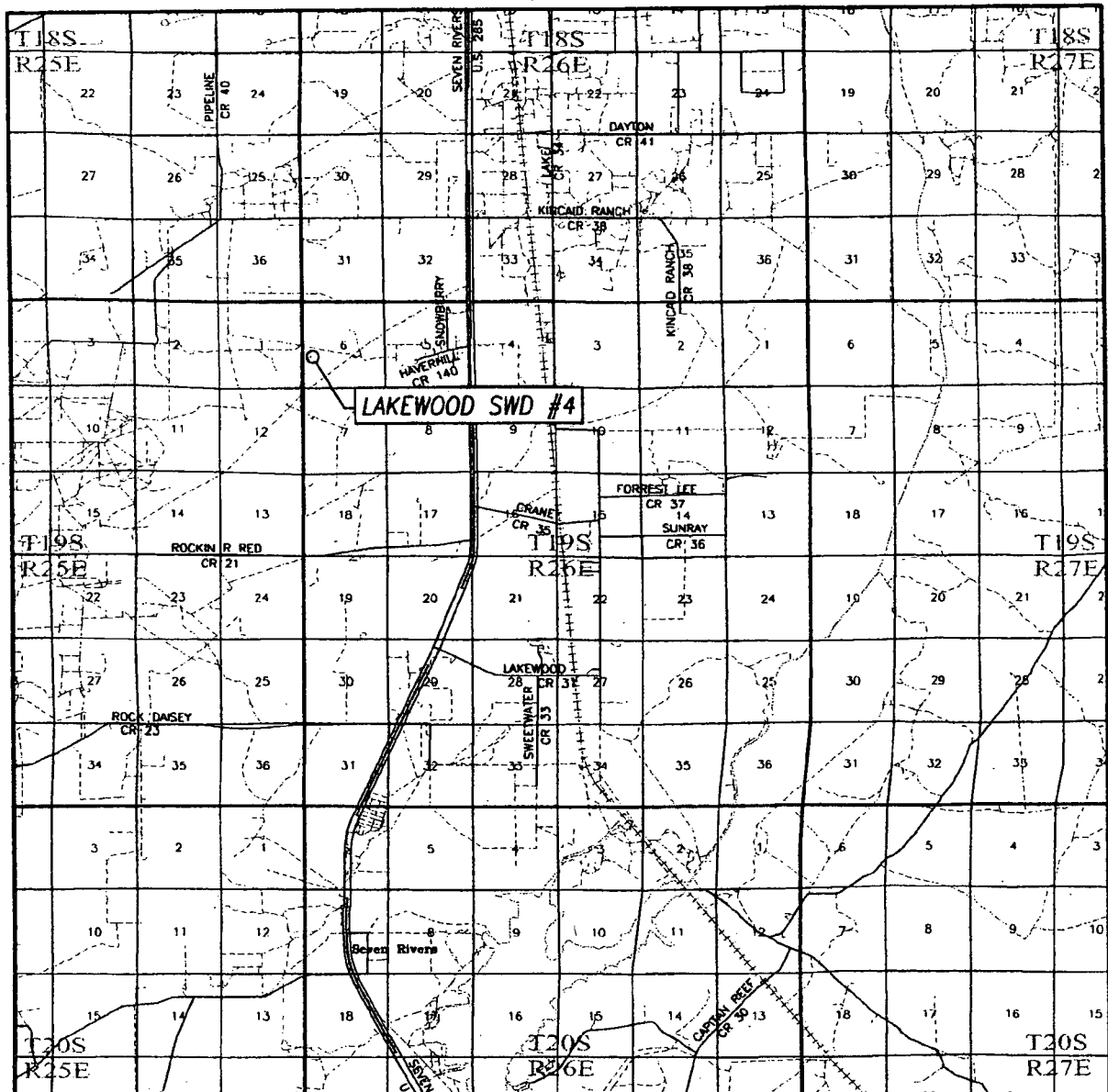
W.O. No.: 13110124

Rev: .

Rel. W.O.:

Sheet 1 of 1

# VICINITY MAP



SCALE: 1" = 2 MILES

SEC. 6 TWP. 19-S RGE. 26-E

SURVEY N.M.P.M.

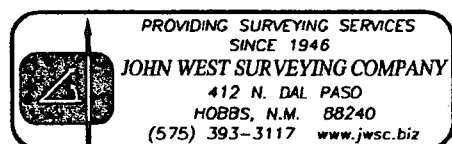
COUNTY EDDY STATE NEW MEXICO

DESCRIPTION 1953' FSL & 663' FWL

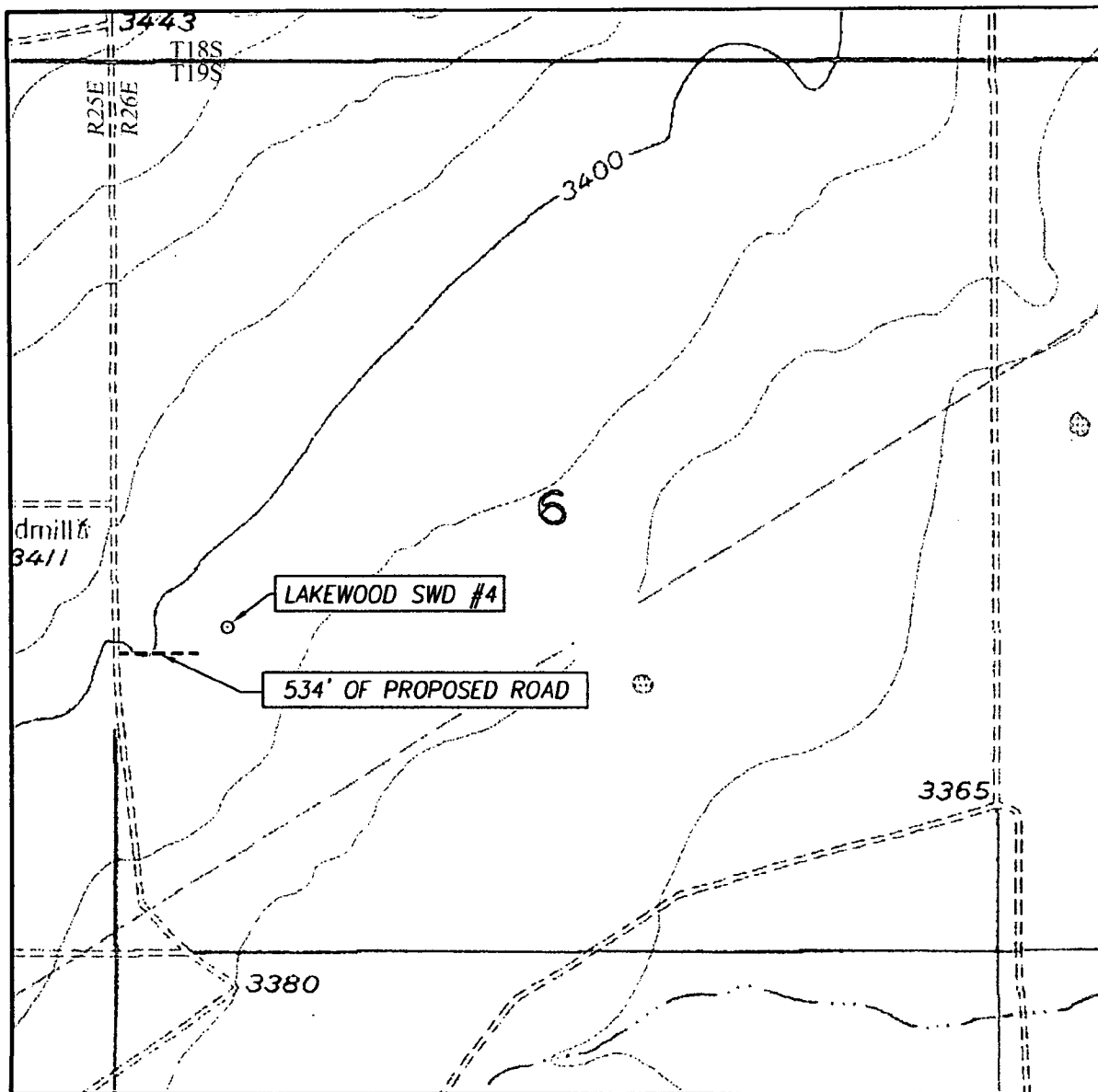
ELEVATION 3393'

OPERATOR COG OPERATING, LLC

LEASE LAKEWOOD SWD



# LOCATION VERIFICATION MAP



SCALE: 1" = 1000'

CONTOUR INTERVAL:  
DAYTON, N.M. - 10'

SEC. 6 TWP. 19-S RGE. 26-E

SURVEY N.M.P.M.

COUNTY EDDY STATE NEW MEXICO

DESCRIPTION 1953' FSL & 663' FWL

ELEVATION 3393'

OPERATOR COG OPERATING, LLC

LEASE LAKEWOOD SWD

U.S.G.S. TOPOGRAPHIC MAP  
DAYTON, N.M.

