

District I
1625 N. French Dr., Hobbs, NM 88240
Phone: (575) 393-6161 Fax: (575) 393-0720
District II
811 S. First St., Artesia, NM 88210
Phone: (575) 748-1283 Fax: (575) 748-9720
District III
1000 Rio Brazos Road, Aztec, NM 87410
Phone: (505) 334-6178 Fax: (505) 334-6170
District IV
1220 S. St. Francis Dr., Santa Fe, NM 87505
Phone: (505) 476-3460 Fax: (505) 476-3462

State of New Mexico
Energy, Minerals & Natural Resources Department
OIL CONSERVATION DIVISION
1220 South St. Francis Dr.
Santa Fe, NM 87505

RECEIVED

MAY 15 2013

NMOC D ARTESIA

Form C-102

Revised August 1, 2011

Submit one copy to appropriate

District Office

☐ AMENDED REPORT

WELL LOCATION AND ACREAGE DEDICATION PLAT

¹ API Number 30-015-41362	² Pool Code 30216	³ Pool Name Hay Hollow North; Bone Spring
⁴ Property Code 39904	⁵ Property Name IRRITABLE 22 STATE COM	⁶ Well Number 4H
⁷ OGRID No. 6137	⁸ Operator Name DEVON ENERGY PRODUCTION COMPANY, L.P.	⁹ Elevation 3117.3

¹⁰ Surface Location

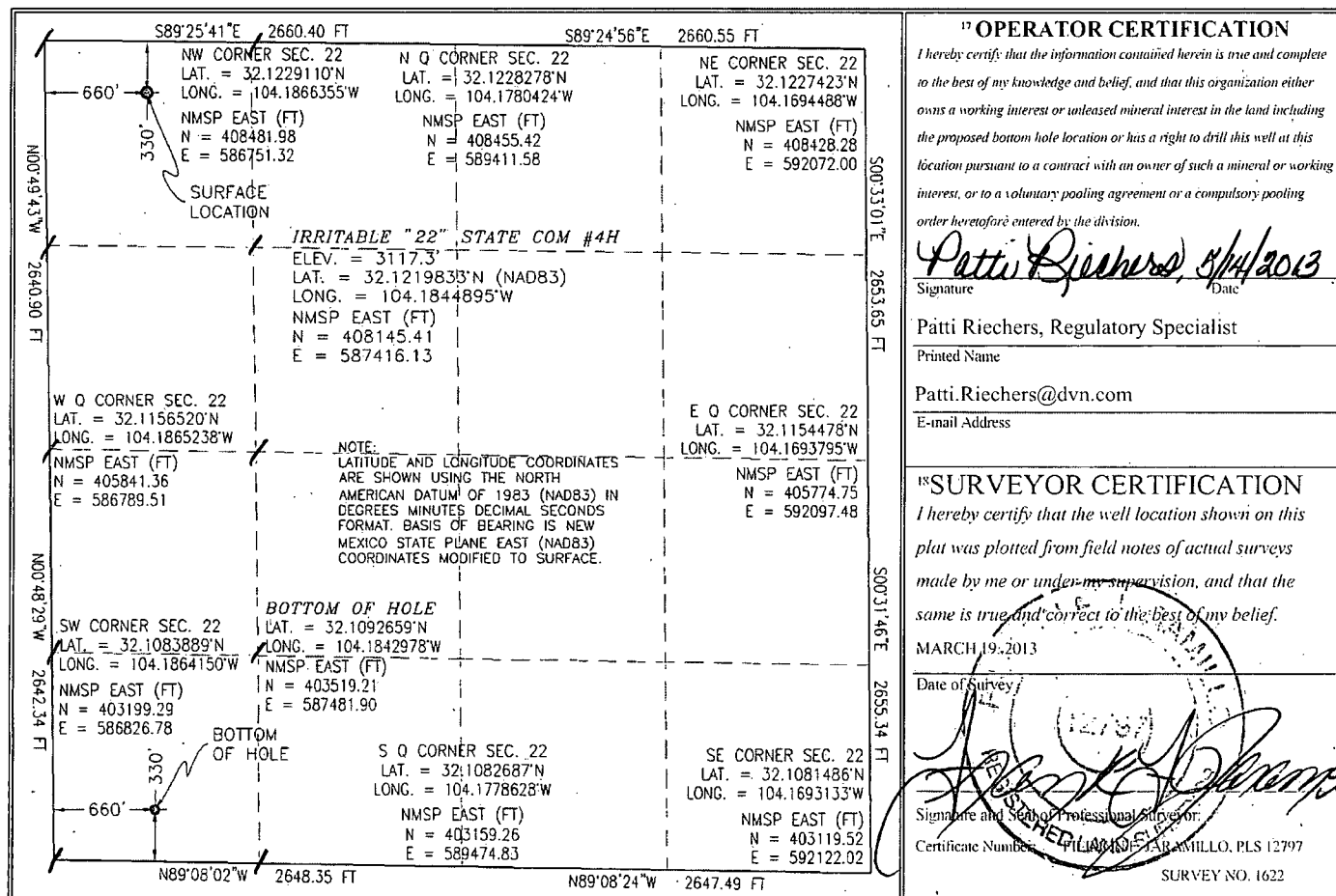
UL or lot no.	Section	Township	Range	Lot Idn	Feet from the	North/South line	Feet from the	East/West line	County
D	22	25 S	27 E		330	NORTH	660	WEST	EDDY

¹¹ Bottom Hole Location If Different From Surface

UL or lot no.	Section	Township	Range	Lot Idn	Feet from the	North/South line	Feet from the	East/West line	County
M	22	25 S	27 E		330	SOUTH	660	WEST	EDDY

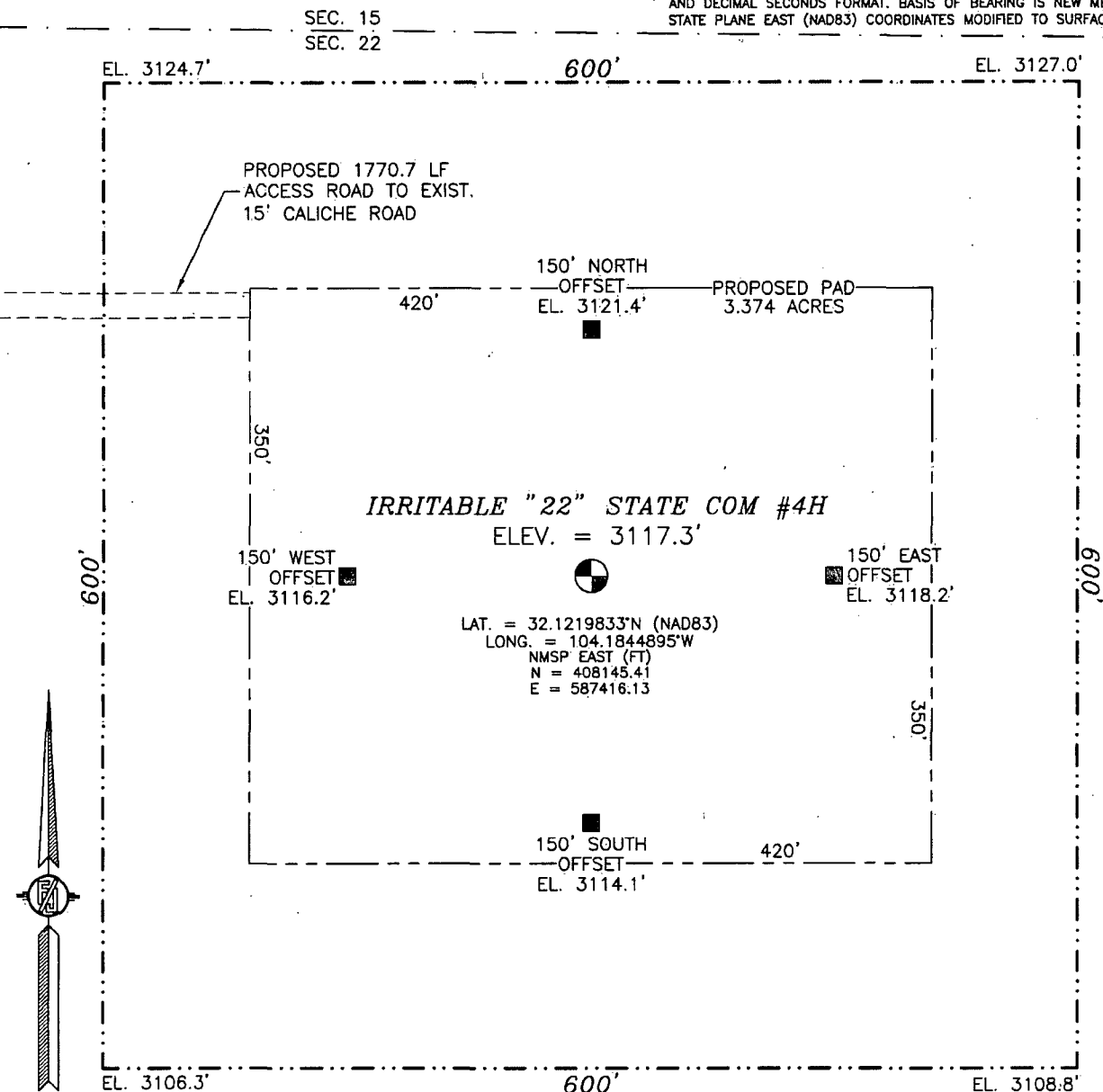
¹² Dedicated Acres 160	¹³ Joint or Infill	¹⁴ Consolidation Code	¹⁵ Order No.
---	-------------------------------	----------------------------------	-------------------------

No allowable will be assigned to this completion until all interests have been consolidated or a non-standard unit has been approved by the division.



SECTION 22, TOWNSHIP 25 SOUTH, RANGE 27 EAST, N.M.P.M.
EDDY COUNTY, STATE OF NEW MEXICO

NOTE: LATITUDE AND LONGITUDE COORDINATES ARE SHOWN USING THE NORTH AMERICAN DATUM OF 1983 (NAD83) IN DEGREES, MINUTES AND DECIMAL SECONDS FORMAT. BASIS OF BEARING IS NEW MEXICO STATE PLANE EAST (NAD83) COORDINATES MODIFIED TO SURFACE.



010 50 100 200

SCALE 1" = 100'

DIRECTIONS TO LOCATION

FROM THE INTERSECTION OF CR 720 (BLACK RIVER VILLAGE) AND CR 774 (ROADRUNNER) GO SOUTHWEST ON CR 774 FOR APPROX. 8.8 MILES. GO EAST ON CALICHE ROAD FOR APPROX. 0.1 OF A MILE (ACROSS CATTLE GUARD). FOLLOW ROAD LATHS EAST APPROX. 0.35 OF A MILE TO NORTHWEST CORNER PAD. LOCATION IS APPROX. 267 FT. SOUTHEAST.

DEVON ENERGY PRODUCTION COMPANY, L.P.

IRRITABLE "22" STATE COM #4H

LOCATED 330 FT. FROM THE NORTH LINE
AND 660 FT. FROM THE WEST LINE OF

SECTION 22, TOWNSHIP 25 SOUTH,

RANGE 27 EAST, N.M.P.M.

EDDY COUNTY, STATE OF NEW MEXICO

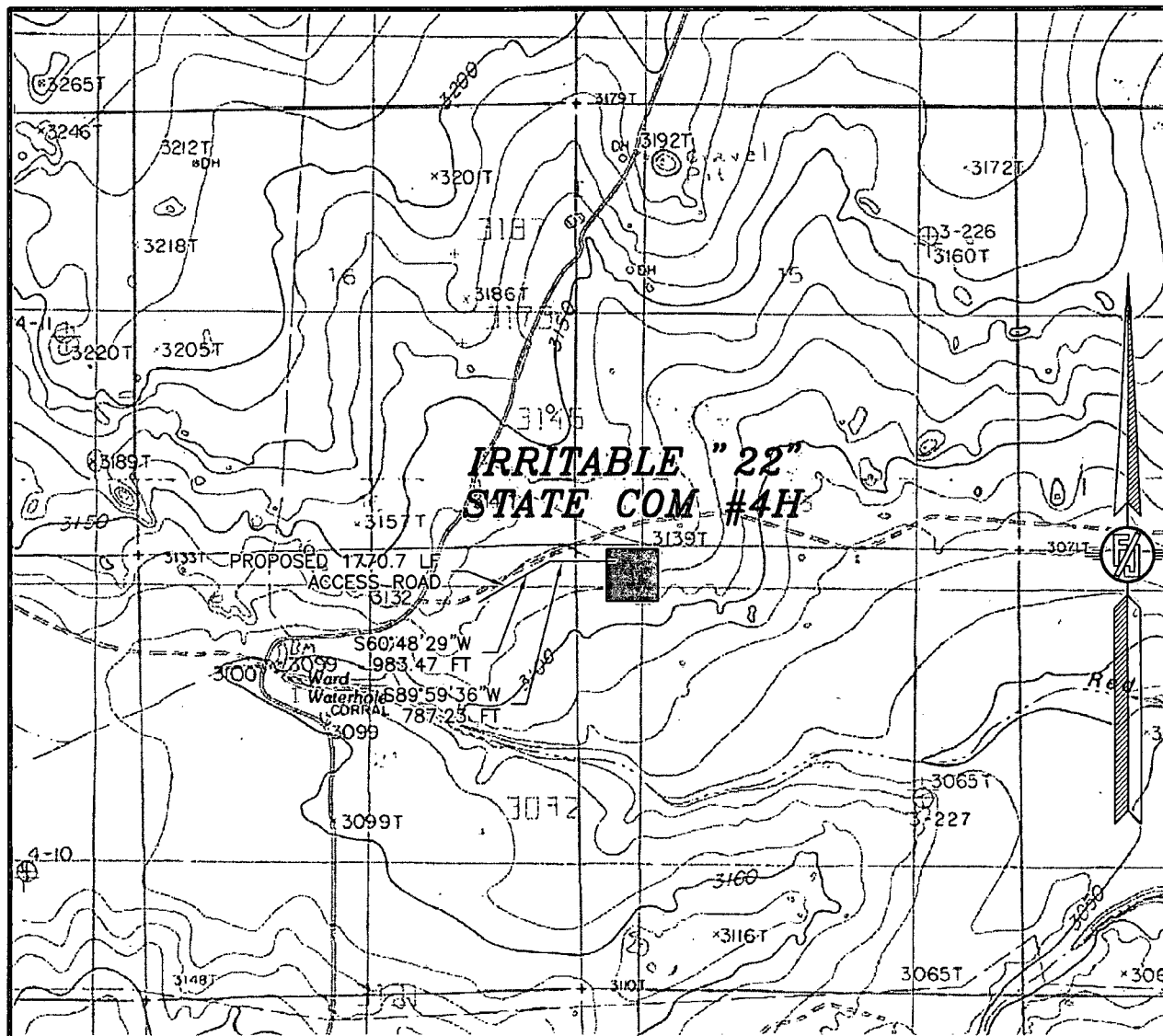
MARCH 19, 2013

SURVEY NO. 1622

MADRON SURVEYING, INC. 301 SOUTH CANAL (575) 234-3341

CARLSBAD, NEW MEXICO

SECTION 22, TOWNSHIP 25 SOUTH, RANGE 27 EAST, N.M.P.M.
 EDDY COUNTY, STATE OF NEW MEXICO
 LOCATION VERIFICATION MAP



USGS QUAD MAP:
 COTTONWOOD HILLS

NOT TO SCALE

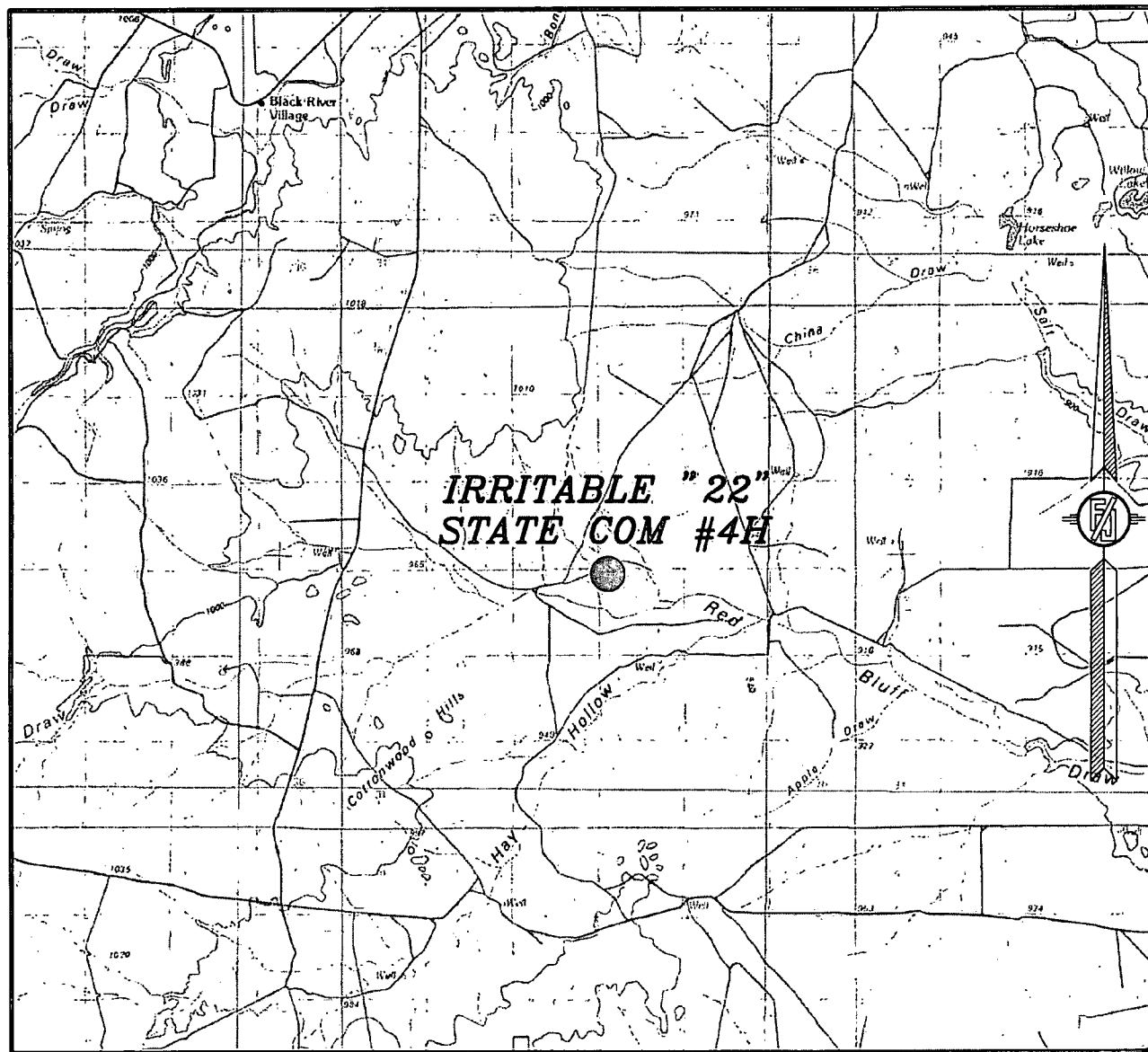
DEVON ENERGY PRODUCTION COMPANY, L.P.
IRRITABLE "22" STATE COM #4H
 LOCATED 330 FT. FROM THE NORTH LINE
 AND 660 FT. FROM THE WEST LINE OF
 SECTION 22, TOWNSHIP 25 SOUTH,
 RANGE 27 EAST, N.M.P.M.
 EDDY COUNTY, STATE OF NEW MEXICO

MARCH 19, 2013

MADRON SURVEYING, INC. 301 SOUTH CANAL (575) 234-3341 CARLSBAD, NEW MEXICO

SURVEY NO. 1622

SECTION 22, TOWNSHIP 25 SOUTH, RANGE 27 EAST, N.M.P.M.
 EDDY COUNTY, STATE OF NEW MEXICO
 VICINITY MAP



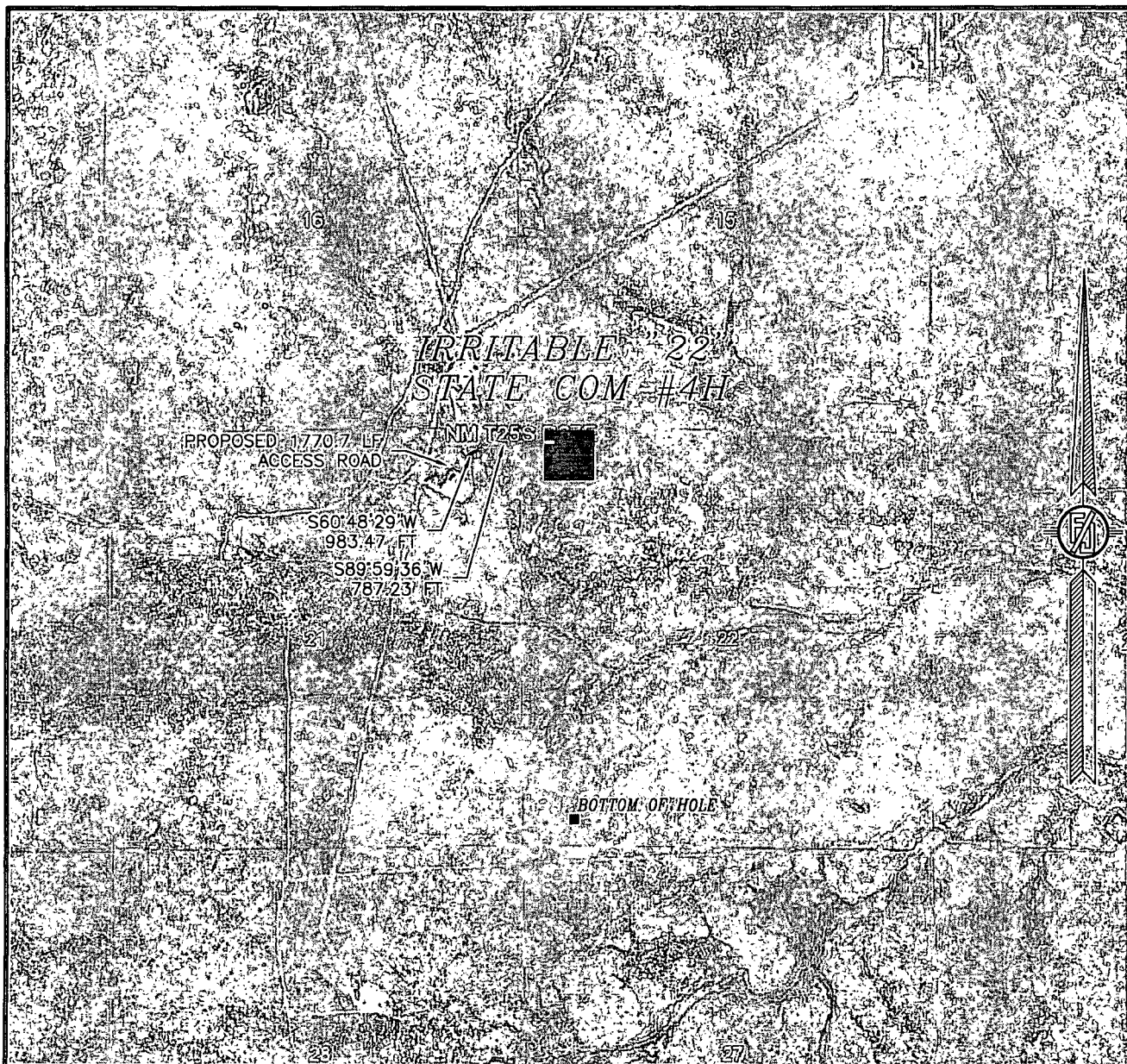
NOT TO SCALE

DEVON ENERGY PRODUCTION COMPANY, L.P.
IRRITABLE "22" STATE COM #4H
 LOCATED 330 FT. FROM THE NORTH LINE
 AND 660 FT. FROM THE WEST LINE OF
 SECTION 22, TOWNSHIP 25 SOUTH,
 RANGE 27 EAST, N.M.P.M.
 EDDY COUNTY, STATE OF NEW MEXICO

MARCH 19, 2013

MADRON SURVEYING, INC. 301 SOUTH CANAL (575) 234-3341 CARLSBAD, NEW MEXICO SURVEY NO. 1622

SECTION 22, TOWNSHIP 25 SOUTH, RANGE 27 EAST, N.M.P.M.
EDDY COUNTY, STATE OF NEW MEXICO
AERIAL PHOTO



NOT TO SCALE
AERIAL PHOTO:
GOOGLE EARTH
JULY 2011

DEVON ENERGY PRODUCTION COMPANY, L.P.
IRRITABLE "22" STATE COM #4H
LOCATED 330 FT. FROM THE NORTH LINE
AND 660 FT. FROM THE WEST LINE OF
SECTION 22, TOWNSHIP 25 SOUTH,
RANGE 27 EAST, N.M.P.M.
EDDY COUNTY, STATE OF NEW MEXICO

MARCH 19, 2013

SURVEY NO. 1622

MADRON SURVEYING, INC. 301 SOUTH CANAL (575) 234-3341 CARLSBAD, NEW MEXICO