

☐ AMENDED REPORT

1220 S. St. Francis Dr., Santa Fe, NM 87505

State of New Mexico
Energy, Minerals & Natural Resources Department
OIL CONSERVATION DIVISION
1220 South St. Francis Dr.
Santa Fe, NM 87505

Survey Data:

Point	Coordinates
NW CORNER SEC. 22	LAT. = 32.6531943°N LONG. = 103.8657142°W
NE CORNER SEC. 22	LAT. = 32.6532167°N LONG. = 103.8485583°W
SW CORNER SEC. 22	LAT. = 32.6386806°N LONG. = 103.8656681°W
SE CORNER SEC. 22	LAT. = 32.6387059°N LONG. = 103.8485136°W

Well Location: 363'

Project Area: PP: 1030 FNL & 47 FEL

Production Area:

Surveyor Information:

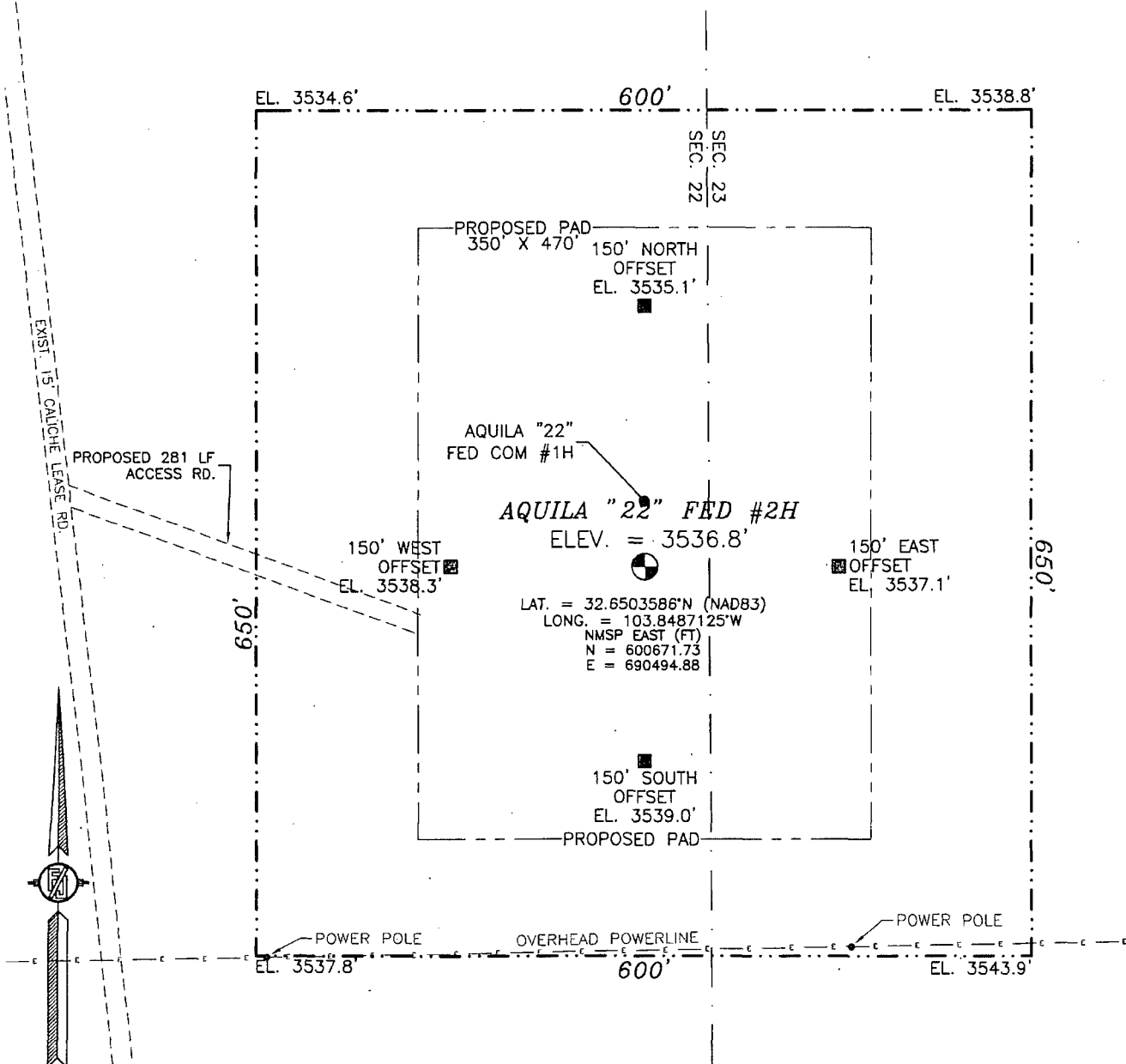
- Signature: *Judith A. Barnett*
- Date: 5/1/13
- Printed Name: Judith A. Barnett, Regulatory Specialist

Surveyor Certification:

I hereby certify that the well location shown on this plat was plotted from field notes of actual surveys made by me or under my supervision and that the same is true and correct to the best of my belief.

Surveyor Seal: State of New Mexico, Surveyor No. 1039

SECTION 22, TOWNSHIP 19 SOUTH, RANGE 31 EAST, N.M.P.M.
EDDY COUNTY, STATE OF NEW MEXICO



0 12 60 120 240

SCALE 1" = 120'
DIRECTIONS TO LOCATION

FROM INTERSECTION OF CR 222 (SHUGART ROAD) AND CR 248
(LUSK PLANT ROAD) GO SOUTH ON CR 222 1.1 MILES, TURN LEFT
(EAST) ON CALICHE LEASE ROAD GO 0.85 MILES, SITE IS ON THE
LEFT (EAST) ABOUT 300 FT.

DEVON ENERGY PRODUCTION COMPANY, L.P.

AQUILA "22" FED #2H

LOCATED 1040 FT. FROM THE NORTH LINE
AND 50 FT. FROM THE EAST LINE OF
SECTION 22, TOWNSHIP 19 SOUTH,
RANGE 31 EAST, N.M.P.M.
EDDY COUNTY, STATE OF NEW MEXICO

MAY 22, 2012

SURVEY NO. 1039

MADRON SURVEYING, INC. 301 SOUTH CANAL CARLSBAD, NEW MEXICO
(575) 234-3341

Topographic map of the Aquila "22" area. The map shows contour lines and spot heights. Key features include:

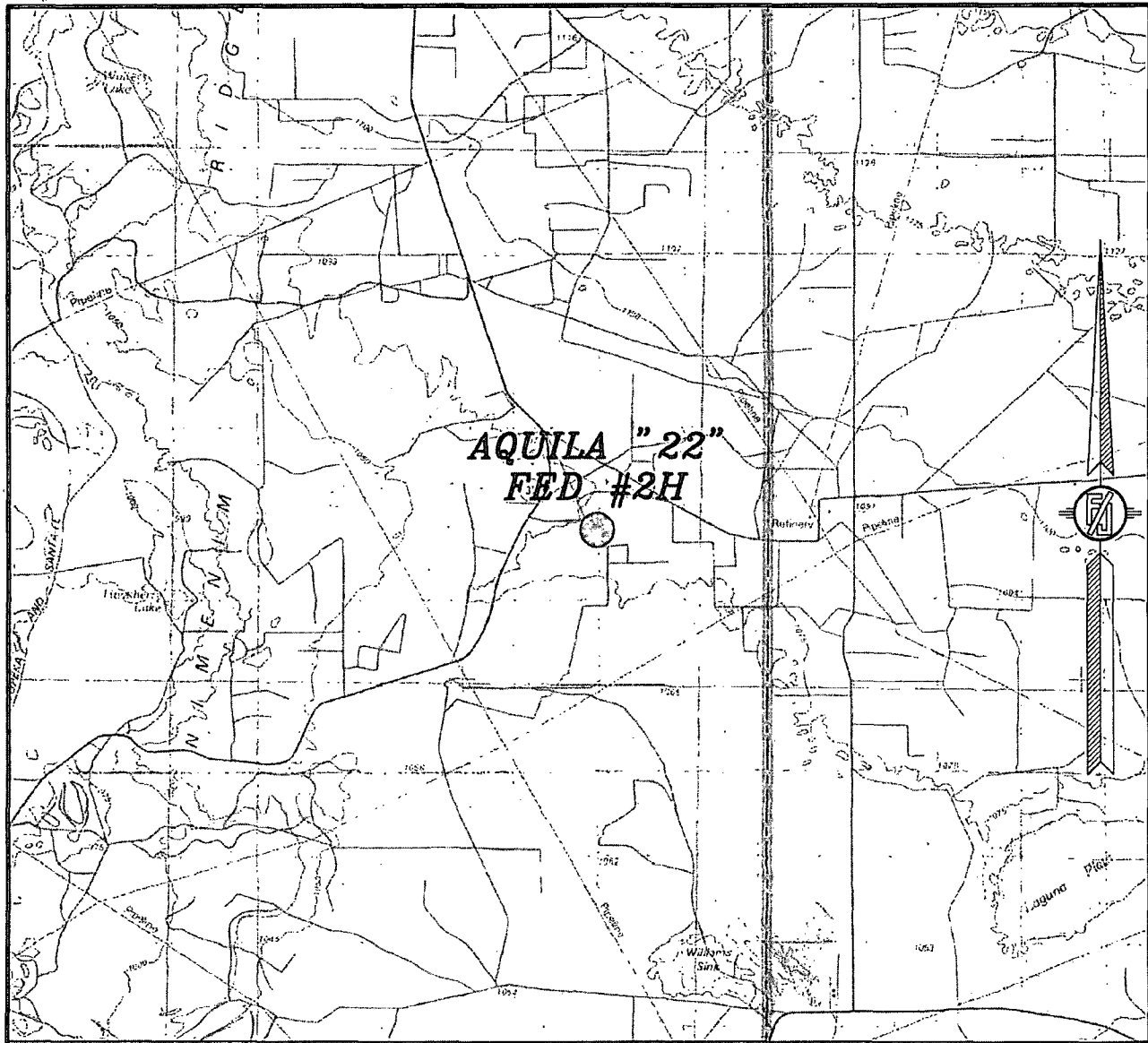
- Spot Heights:** 3552T, 3545, 3525T, 3518T, 3522T, 3526, 3535T, 3542T, 3550, 3542T, 3538T, 3532T, 3529T, 3552T, 3519T, 3516T, 3523T, 3538T, 3549T, 3538T, 3539T, 3558T, 3552T, 3539T, 3552T, 3519T, 3548T, 3472T.
- Proposed 281 LF ACCESS (RD):** A road is shown running horizontally across the center of the map.
- AQUILA "22" FED #2H:** A label with a square symbol indicating a specific location.
- AQUILA "22" FED COM #1H:** A label with a square symbol indicating another specific location.
- Other Labels:** BM 3519, 2-130, 2-129, 2-145, 2-144, 2-143, 2-142, 2-141, 2-140, 2-139, 2-138, 2-137, 2-136, 2-135, 2-134, 2-133, 2-132, 2-131, 2-130, 2-129, 2-128, 2-127, 2-126, 2-125, 2-124, 2-123, 2-122, 2-121, 2-120, 2-119, 2-118, 2-117, 2-116, 2-115, 2-114, 2-113, 2-112, 2-111, 2-110, 2-109, 2-108, 2-107, 2-106, 2-105, 2-104, 2-103, 2-102, 2-101, 2-100, 2-99, 2-98, 2-97, 2-96, 2-95, 2-94, 2-93, 2-92, 2-91, 2-90, 2-89, 2-88, 2-87, 2-86, 2-85, 2-84, 2-83, 2-82, 2-81, 2-80, 2-79, 2-78, 2-77, 2-76, 2-75, 2-74, 2-73, 2-72, 2-71, 2-70, 2-69, 2-68, 2-67, 2-66, 2-65, 2-64, 2-63, 2-62, 2-61, 2-60, 2-59, 2-58, 2-57, 2-56, 2-55, 2-54, 2-53, 2-52, 2-51, 2-50, 2-49, 2-48, 2-47, 2-46, 2-45, 2-44, 2-43, 2-42, 2-41, 2-40, 2-39, 2-38, 2-37, 2-36, 2-35, 2-34, 2-33, 2-32, 2-31, 2-30, 2-29, 2-28, 2-27, 2-26, 2-25, 2-24, 2-23, 2-22, 2-21, 2-20, 2-19, 2-18, 2-17, 2-16, 2-15, 2-14, 2-13, 2-12, 2-11, 2-10, 2-9, 2-8, 2-7, 2-6, 2-5, 2-4, 2-3, 2-2, 2-1, 2-0, 2-1, 2-2, 2-3, 2-4, 2-5, 2-6, 2-7, 2-8, 2-9, 2-10, 2-11, 2-12, 2-13, 2-14, 2-15, 2-16, 2-17, 2-18, 2-19, 2-20, 2-21, 2-22, 2-23, 2-24, 2-25, 2-26, 2-27, 2-28, 2-29, 2-30, 2-31, 2-32, 2-33, 2-34, 2-35, 2-36, 2-37, 2-38, 2-39, 2-40, 2-41, 2-42, 2-43, 2-44, 2-45, 2-46, 2-47, 2-48, 2-49, 2-50, 2-51, 2-52, 2-53, 2-54, 2-55, 2-56, 2-57, 2-58, 2-59, 2-60, 2-61, 2-62, 2-63, 2-64, 2-65, 2-66, 2-67, 2-68, 2-69, 2-70, 2-71, 2-72, 2-73, 2-74, 2-75, 2-76, 2-77, 2-78, 2-79, 2-80, 2-81, 2-82, 2-83, 2-84, 2-85, 2-86, 2-87, 2-88, 2-89, 2-90, 2-91, 2-92, 2-93, 2-94, 2-95, 2-96, 2-97, 2-98, 2-99, 2-100.

NOT TO SCALE

MAY 22, 2012

MADRON SURVEYING, INC. 301 SOUTH CANAL (575) 234-3341 *CARLSBAD, NEW MEXICO*

SECTION 22, TOWNSHIP 19 SOUTH, RANGE 31 EAST, N.M.P.M.
EDDY COUNTY, STATE OF NEW MEXICO
VICINITY MAP



NOT TO SCALE

DEVON ENERGY PRODUCTION COMPANY, L.P.

AQUILA "22" FED #2H

LOCATED 1040 FT. FROM THE NORTH LINE
AND 50 FT. FROM THE EAST LINE OF
SECTION 22, TOWNSHIP 19 SOUTH,
RANGE 31 EAST, N.M.P.M.
EDDY COUNTY, STATE OF NEW MEXICO

MAY 22, 2012

SURVEY NO. 1039

MADRON SURVEYING, INC. 301 SOUTH CANAL CARLSBAD, NEW MEXICO
(575) 234-3341