

**District I**  
1625 N. French Dr., Hobbs, NM 88240  
Phone: (575) 393-6161 Fax: (575) 393-0720  
**District II**  
811 S. First St., Artesia, NM 88210  
Phone: (575) 748-1283 Fax: (575) 748-9720  
**District III**  
1000 Rio Brazos Road, Aztec, NM 87410  
Phone: (505) 334-6178 Fax: (505) 334-6170  
**District IV**  
1220 S. St. Francis Dr., Santa Fe, NM 87505  
Phone: (505) 476-3460 Fax: (505) 476-3462

# State of New Mexico

Form C-101  
Revised November 14, 2012

## Energy Minerals and Natural Resources

**RECEIVED**

Oil Conservation Division

MAY 02 2013

1220 South St. Francis Dr.

NMOCD ARTESIA Santa Fe, NM 87505

☐ AMENDED REPORT

### APPLICATION FOR PERMIT TO DRILL, RE-ENTER, DEEPEN, PLUGBACK, OR ADD A ZONE

1. Operator Name and Address COG Operating LLC 2208 W. Main Street Artesia, NM 88210		2. OGRID Number 229137
		3. API Number 30-015-36393
4. Property Code 308050	5. Property Name Hurl State Com	6. Well No. 1

#### 7. Surface Location

UL - Lot	Section	Township	Range	Lot Idn	Feet from	N/S Line	Feet From	E/W Line	County
A	16	18S	30E		660	N	660	E	Eddy

#### 8. Proposed Bottom Hole Location

UL - Lot	Section	Township	Range	Lot Idn	Feet from	N/S Line	Feet From	E/W Line	County

#### 9. Pool Information

Pool Name Loco Hills; Bone Spring, East	Pool Code 39513
--	--------------------

#### Additional Well Information

11. Work Type P	12. Well Type O	13. Cable/Rotary N/A	14. Lease Type S	15. Ground Level Elevation 3467'
16. Multiple No	17. Proposed Depth N/A	18. Formation Chester	19. Contractor N/A	20. Spud Date ASAP
Depth to Ground water		Distance from nearest fresh water well		Distance to nearest surface water

#### 21. Proposed Casing and Cement Program

Type	Hole Size	Casing Size	Casing Weight/ft.	Setting Depth	Sacks of Cement	Estimated TOC
Surf	17 1/2"	13 3/8"	48#	408'	In Place	0
Int	12 1/4"	9 5/8"	36#	3384'	In Place	0
Prod	7 7/8"	5 1/2"	17#	12012'	In Place	1500'

#### Casing/Cement Program: Additional Comments

--

#### 22. Proposed Blowout Prevention Program

Type	Working Pressure	Test Pressure	Manufacturer

23. I hereby certify that the information given above is true and complete to the best of my knowledge and belief.

I further certify that I have complied with 19.15.14.9 (A) NMAC ☒ and/or 19.15.14.9 (B) NMAC ☐, if applicable.

Signature: *Stormi Davis*

Printed name: Stormi Davis

Title: Regulatory Analyst

E-mail Address: [sdavis@concho.com](mailto:sdavis@concho.com)

Date: 5/1/13

Phone: 575-748-6946

#### OIL CONSERVATION DIVISION

Approved By:

*R. Dade*

Title:

*DIST #1 Supervisor*

Approved Date: *5/15/2013*

Expiration Date: *5/15/2015*

Conditions of Approval Attached

*OCT 2013*

District I  
1625 N. French Dr., Hobbs, NM 88240  
Phone: (575) 393-6161 Fax: (575) 393-0720  
District II  
811 S. First St., Artesia, NM 88210  
Phone: (575) 748-1283 Fax: (575) 748-9720  
District III  
1000 Rio Brazos Road, Aztec, NM 87410  
Phone: (505) 334-6178 Fax: (505) 334-6170  
District IV  
1220 S. St. Francis Dr., Santa Fe, NM 87505  
Phone: (505) 476-3460 Fax: (505) 476-3462

State of New Mexico  
Energy, Minerals & Natural Resources Department  
OIL CONSERVATION DIVISION  
1220 South St. Francis Dr.  
Santa Fe, NM 87505

Form C-102  
Revised August 1, 2011  
Submit one copy to appropriate  
District Office

☐ AMENDED REPORT

WELL LOCATION AND ACREAGE DEDICATION PLAT

<sup>1</sup> API Number <b>30-015-36393</b>	<sup>2</sup> Pool Code <b>39513</b>	<sup>3</sup> Pool Name <b>Loco Hills; Bone Spring, East</b>
<sup>4</sup> Property Code <b>308050</b>	<sup>5</sup> Property Name <b>Hurl State Com</b>	
<sup>7</sup> OGRID No. <b>229137</b>	<sup>8</sup> Operator Name <b>COG Operating LLC</b>	
		<sup>6</sup> Well Number <b>1</b>
		<sup>9</sup> Elevation <b>3467' GR</b>

<sup>10</sup> Surface Location

UL or lot no. <b>A</b>	Section <b>16</b>	Township <b>18S</b>	Range <b>30E</b>	Lot Idn	Feet from the <b>660</b>	North/South line <b>North</b>	Feet from the <b>660</b>	East/West line <b>East</b>	County <b>Eddy</b>
---------------------------	----------------------	------------------------	---------------------	---------	-----------------------------	----------------------------------	-----------------------------	-------------------------------	-----------------------

<sup>11</sup> Bottom Hole Location If Different From Surface

UL or lot no.	Section	Township	Range	Lot Idn	Feet from the	North/South line	Feet from the	East/West line	County
---------------	---------	----------	-------	---------	---------------	------------------	---------------	----------------	--------

<sup>12</sup> Dedicated Acres <b>40</b>	<sup>13</sup> Joint or Infill	<sup>14</sup> Consolidation Code	<sup>15</sup> Order No.
--	-------------------------------	----------------------------------	-------------------------

No allowable will be assigned to this completion until all interests have been consolidated or a non-standard unit has been approved by the division.

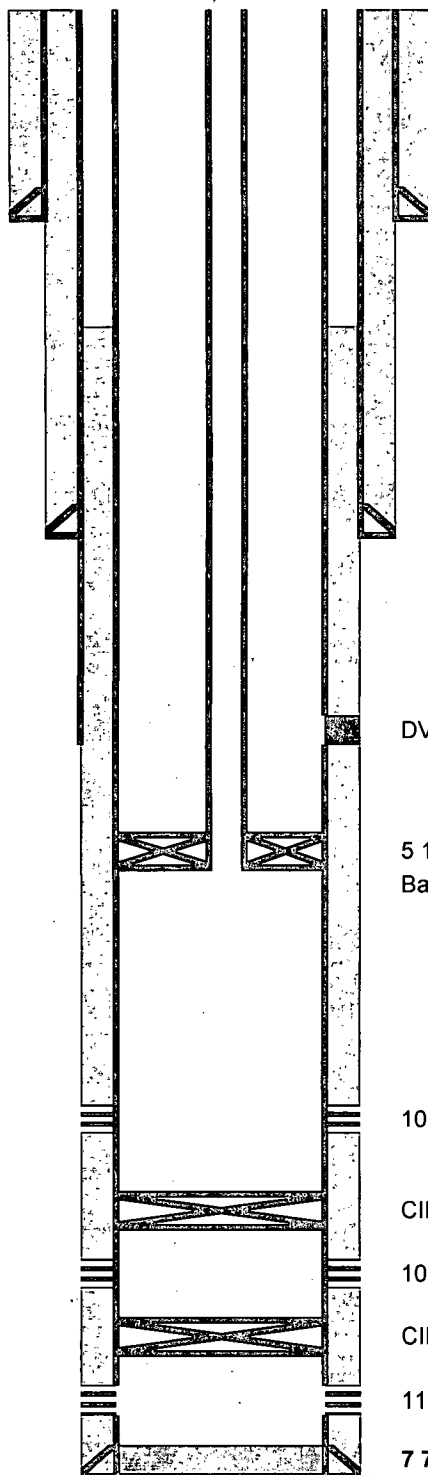
16					<p><sup>17</sup> <b>OPERATOR CERTIFICATION</b> I hereby certify that the information contained herein is true and complete to the best of my knowledge and belief, and that this organization either owns a working interest or unleased mineral interest in the land including the proposed bottom hole location or has a right to drill this well at this location pursuant to a contract with an owner of such a mineral or working interest, or to a voluntary pooling agreement or a compulsory pooling order heretofore entered by the division.</p> <p><i>Stormi Davis</i> 5/1/13 Signature Date</p> <p>Stormi Davis Printed Name</p> <p>sdavis@concho.com E-mail Address</p>
					<p><sup>18</sup> <b>SURVEYOR CERTIFICATION</b> I hereby certify that the well location shown on this plat was plotted from field notes of actual surveys made by me or under my supervision, and that the same is true and correct to the best of my belief.</p> <p>Date of Survey</p> <p>Signature and Seal of Professional Surveyor:</p> <p>REFER TO ORIGINAL PLAT</p> <p>Certificate Number</p>

## **Procedure:**

- 1) Ensure all permits and plug back procedure have been received
- 2) Test anchors if necessary
- 3) MIRU
- 4) Kill well if necessary.
- 5) Install back pressure valve.
- 6) Remove wellhead & install BOP.
- 7) Attempt to release from on/off tool. (If cannot release, punch hole in tubing, and if necessary, cut off)
- 8) Pull tubing and visually inspect. If necessary, utilize workstring
- 9) Make a bit and scraper run
- 10) Set a CIBP @ 10440' w/35' of cement
- 11) TIH with tubing open ended
- 12) Spot Class H cement mixed at 16.4# gal from 9150 – 9350 (Wolfcamp top @ 9138' but bottom Bone Spring perf @ 9096')
- 13) Circulate well clean & TOH
- 14) Pressure test casing to 8000 psi. Ensure 1000 psi placed on backside
- 15) Perforate 3<sup>rd</sup> Bone Spring @ 9096' (10 holes), 9004' (14 holes) and 8944' (12 holes) and 8844' (12 holes) w/6 spf, 60° phasing utilizing Halliburton cased hole log dated 10/28/08.
- 16) TIH w/tubing & packer. Spot acid across perfs. Set packer at 8800'
- 17) Acidize zone with 3000 gallons 15% HCl at 3 – 5 BPM while dropping balls
- 18) Shut-in 1 hour & flow back
- 19) Pull tubing and packer
- 20) Set frac valve & prepare for frac.
- 21) Frac well utilizing attached procedure.
- 22) Set flow through composi plug at 8350'
- 23) Perforate 2<sup>nd</sup> Bone Spring @ 8250' (14 holes), 8198' (14 holes), 8112' (12 holes), and 8056' (10 holes) w/6 spf, 60° phasing utilizing Halliburton cased hole log dated 10/28/08.
- 24) Frac well utilizing attached procedure.
- 25) Set flow through composi plug at 5710'
- 26) Perforate 1<sup>st</sup> Bone Spring @ 7381' (14 holes), 7346' (12 holes), 7273' (12 holes), and 7216' (10 holes) w/6 spf, 60° phasing utilizing Halliburton cased hole log dated 10/28/08.
- 27) Frac well utilizing attached procedure.
- 28) Shut-in well for 24 hours
- 29) Flow well back until dead.
- 30) TIH with tubing and drill out plugs. TOH
- 31) TIH with tubing & gas lift equipment.
- 32) Place well on test

Author:	Stroup		
Well Name	<b>Hurl St Com</b>	Well No.	<b>#1</b>
Field	Sand Tank	API #:	30-015-36393
County	Eddy	Prop #:	
State	New Mexico	Zone:	Strawn
Date	4/23/2013		
GL	3467'		
KB	3484'		

Description	O.D.	Grade	Weight	Depth	Cmt Sx	TOC
Surface Csg	13 3/8	J55	48	408	450	Surface
Inter Csg	9 5/8	J55	36	3,384	1650	Surface
Prod Csg	5 1/2	P110	17	12,012	1,770	<b>1500'</b>
Liner						



### 17-1/2" Hole

13-3/8" (J55 - 48#) @ 408' w/450 sx  
TOC @ surface

## CURRENT

TOC @ 1500' by TS

2-3/8" L80 Tbg - 329 jts

### 12 1/4" hole

9-5/8" (J55 - 36#) @ 3384' w/1650 sx  
TOC @ surface

DV Tool @ 8506' w/1100' sx

Marker Jt @ 10181'

5 1/2" Versaset V2 Packer @ 10463' w/1.875" Profile  
Baker 1.81" F Nipple @ 10472'

10532-35, 10565-67, 10594-97, 10684-87, 10702-04  
Strawn

CIBP @ 10900' w/cmt to 10865'

10948 - 10952' Atoka

CIBP @ 11325' w/cement

11366 - 400 Morrow

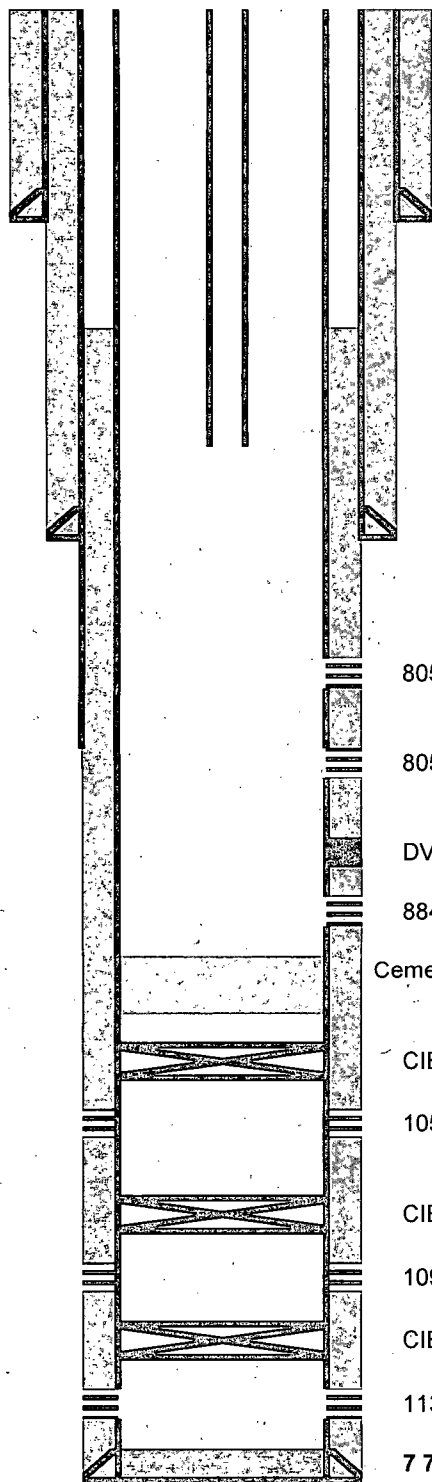
### 7 7/8" hole

5-1/2" (P110 - 17#) @ 12012' w/670 sx

TD @ 12023

Author:	Stroup		
Well Name:	<b>Hurl St Com</b>	Well No.:	<b>#1</b>
Field:	Loco Hills	API #:	30-015-36393
County:	Eddy	Prop #:	
State:	New Mexico	Zone:	Bone Spring
Date:	4/23/2013		
GL:	3467'		
KB:	3484'		

Description	O.D.	Grade	Weight	Depth	Cmt Sx	TOC
Surface Csg	13 3/8	J55	48	408	450	Surface
Inter Csg	9 5/8	J55	36	3,384	1650	Surface
Prod Csg	5 1/2	P110	17	12,012	1,770	<b>1500'</b>
Liner						



### 17-1/2" Hole

13-3/8" (J55 - 48#) @ 408' w/450 sx  
TOC @ surface

TOC @ 1500' by TS

2-3/8" L80 Tbg

### 12 1/4" hole

9-5/8" (J55 - 36#) @ 3384' w/1650 sx  
TOC @ surface

8056, 8112, 8198, 8250 - 1st Bone Spring

8056, 8112, 8198, 8250 - 2nd Bone Spring

DV Tool @ 8506' w/1100' sx

8844, 8944, 9004, 9096 - 3rd Bone Spring

Cement plug @ 9150 - 9350

CIBP @ 10440' w/35' cement

10532-35, 10565-67, 10594-97, 10684-87, 10702-04  
Strawn

CIBP @ 10900' w/cmt to 10865'

10948 - 10952' Atoka

CIBP @ 11325' w/cement

11366 - 400 Morrow

### 7 7/8" hole

5-1/2" (P110 - 17#) @ 12012' w/670 sx

TD @ 12023

**PROPOSED**