

DISTRICT I
1625 N. French Dr., Hobbs, NM 88240
Phone: (575) 393-6161 Fax: (575) 393-0720

DISTRICT II
811 S. First St., Artesia, NM 88210
Phone: (575) 748-1283 Fax: (575) 748-9720

DISTRICT III
1000 Rio Brazos Road, Aztec, NM 87410
Phone: (505) 334-6178 Fax: (505) 334-6170

DISTRICT IV
1220 S. St. Francis Dr., Santa Fe, NM 87505
Phone: (505) 476-3460 Fax: (505) 476-3462

State of New Mexico
Energy, Minerals & Natural Resources Department
OIL CONSERVATION DIVISION
1220 South St. Francis Dr.
Santa Fe, New Mexico 87505

RECEIVED

MAY 31 2013

NMOCD ARTESIA

Form C-102

Revised August 1, 2011

Submit one copy to appropriate District Office

AMENDED REPORT

WELL LOCATION AND ACREAGE DEDICATION PLAT

API Number 30-015-41187	Pool Code 96830	Pool Name Artesia; Glorita-Yaso(0)
Property Code 308701	Property Name A STATE	Well Number 64
GRID No. 873	Operator Name APACHE CORPORATION	Elevation 3599'

Surface Location

UL or lot No. D	Section 26	Township 17-S	Range 28-E	Lot Idn	Feet from the 1020	North/South line NORTH	Feet from the 350	East/West line WEST	County EDDY
---------------------------	----------------------	-------------------------	----------------------	---------	------------------------------	----------------------------------	-----------------------------	-------------------------------	-----------------------

Bottom Hole Location If Different From Surface

UL or lot No.	Section	Township	Range	Lot Idn	Feet from the	North/South line	Feet from the	East/West line	County
Dedicated Acres 40	Joint or Infill	Consolidation Code	Order No.						

NO ALLOWABLE WILL BE ASSIGNED TO THIS COMPLETION UNTIL ALL INTERESTS HAVE BEEN CONSOLIDATED OR A NON-STANDARD UNIT HAS BEEN APPROVED BY THE DIVISION

<p>GEODETIC COORDINATES NAD 27 NME</p> <p>SURFACE LOCATION Y=658415.6 N X=555180.9 E</p> <p>LAT.= 32.809944° N LONG.= 104.153731° W</p> <p>LAT.= 32° 48' 36" N LONG.= 104° 09' 13" W</p>	

OPERATOR CERTIFICATION

I hereby certify that the information herein is true and complete to the best of my knowledge and belief, and that this organization either owns a working interest or unleased mineral interest in the land including the proposed bottom hole location or has a right to drill this well at this location pursuant to a contract with an owner of such mineral or working interest, or to a voluntary pooling agreement or a compulsory pooling order heretofore entered by the division.

Vicki Brown 3/4/13
Signature Date

Vicki Brown
Printed Name

vicki.brown@apachecorp.com
E-mail Address

SURVEYOR CERTIFICATION

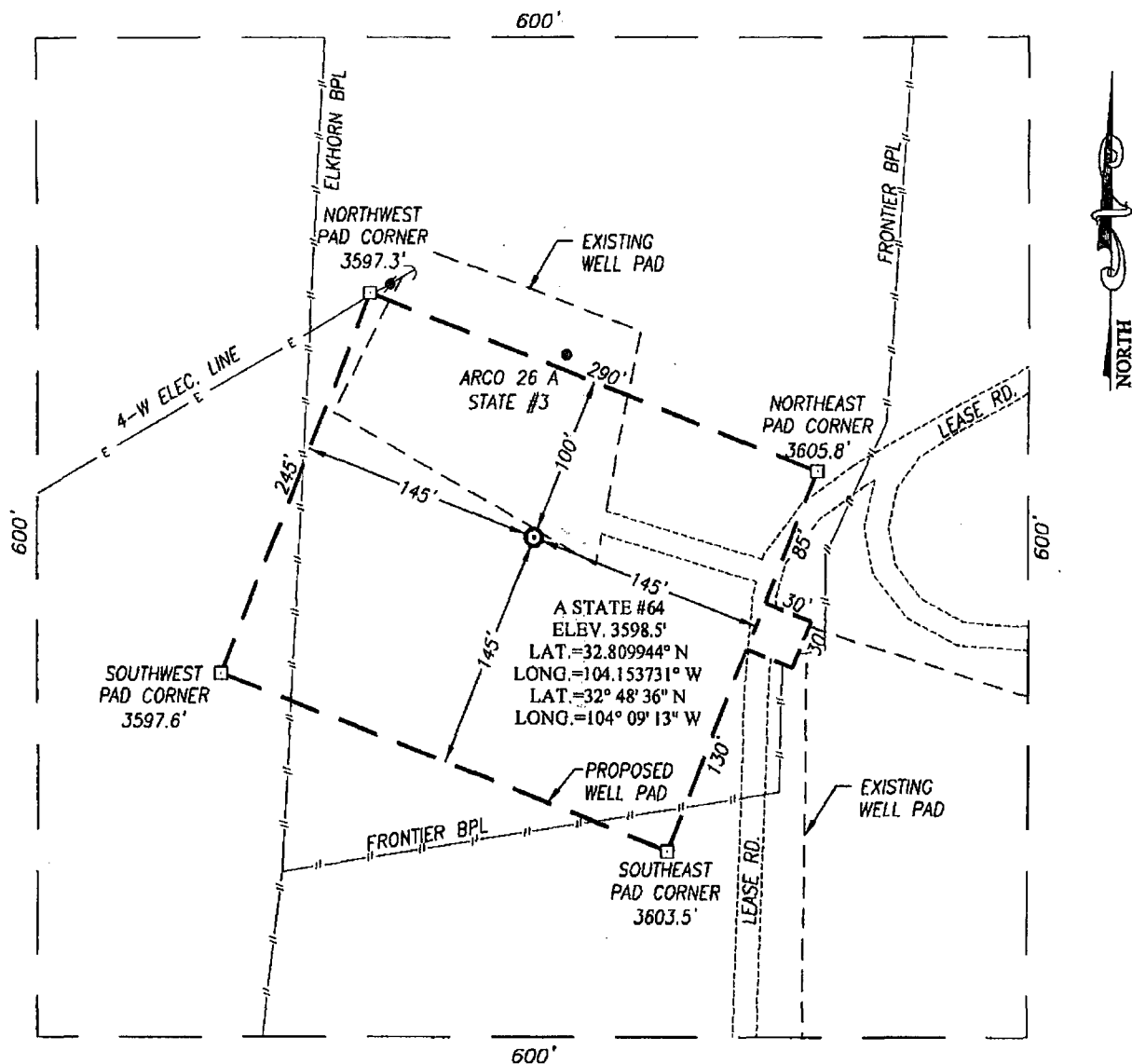
I hereby certify that the well location shown on this plat was plotted from field notes of actual surveys made by me or under my supervision, and that the same is true and correct to the best of my belief.

JANUARY 30, 2013

Date of Survey
Signature & Seal of Professional Surveyor:

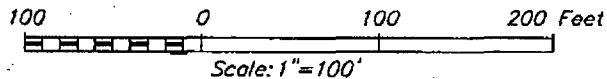
Certificate Number Gary G. Eidson 12641
Rogelio F. Eidson 3239
AP PROFESSIONAL SURVEYOR W.O.: 13.11.0015

SECTION 26, TOWNSHIP 17 SOUTH, RANGE 28 EAST, N.M.P.M.
EDDY COUNTY **NEW MEXICO**



DIRECTIONS TO LOCATION

FROM THE INTERSECTION OF U.S. HWY. #82 AND CO. RD. #209 (TURKEY TRACT) GO NORTH ON CO. RD. #209 APPROX. 0.8 MILE. TURN LEFT AND FOLLOW LEASE ROAD WEST-SOUTHWEST APPROX. 0.4 MILES TO THE LOCATION.



APACHE CORPORATION

A STATE #64 WELL
LOCATED 1020 FEET FROM THE NORTH LINE
AND 350 FEET FROM THE WEST LINE OF SECTION 26,
TOWNSHIP 17 SOUTH, RANGE 28 EAST, N.M.P.M.,
EDDY COUNTY, NEW MEXICO

PROVIDING SURVEYING SERVICES
 SINCE 1946
JOHN WEST SURVEYING COMPANY
 412 N. DAL PASO
 HOBBS, N.M. 88240
 (575) 393-3117 www.jwsc.biz

Survey Date: 1/30/13	CAD Date: 2/7/13	Drawn By: AF/ACR
W.O. No.: 13110015	Rev: 3/6/13	Ref. W.O.:
		Sheet 1 of 1



**DESIGN PLAN, OPERATING & MAINTENANCE PLAN, & CLOSURE PLAN
FOR OCD FOR C-144**

A STATE #064

DESIGN PLAN

Fluid & cuttings coming from drilling operations will pass over the Shale Shaker with the cuttings going to the Sundance Inc / CRI haul off bin and the cleaned fluid returning to the working steel pits.

Equipment includes:

- 2 – 500 bbl steel frac tanks (fresh water for drilling)
- 2 – 180 bbl steel working pits
- 3 – 75 bbl steel haul off bins
- 2 – Pumps (6-1/2" x 10" PZ 10)
- 1 – Shale shaker
- 1 – Mud cleaner – QMAX MudStripper

OPERATING AND MAINTENANCE PLAN

Inspection to occur every tour for proper operation of system and individual components. If any problems are found they will be repaired and/or corrected immediately.

CLOSURE PLAN

All haul bins containing cuttings will be removed from location and hauled to Sundance Incorporated (NM-01-0003) disposal site located 3 miles East of Eunice, NM on the Texas border / Controlled Recovery, Inc's (NM-01-0006) disposal site located near mile marker 66 on Highway 62/180.

Vicki Brown
Drilling Tech