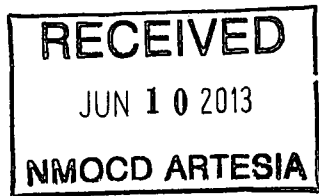


TES
6/10/2013



OCD Artesia

Form 3160-3
(August 2007)

UNITED STATES
DEPARTMENT OF THE INTERIOR
BUREAU OF LAND MANAGEMENT

FORM APPROVED
OMB No. 1004-0137
Expires July 31, 2010

5. Lease Serial No.
LC 067849

6. If Indian, Allottee or Tribe Name

APPLICATION FOR PERMIT TO DRILL OR REENTER

1a. Type of work: <input checked="" type="checkbox"/> DRILL <input type="checkbox"/> REENTER		7. If Unit or CA Agreement, Name and No.	
1b. Type of Well: <input checked="" type="checkbox"/> Oil Well <input type="checkbox"/> Gas Well <input type="checkbox"/> Other <input checked="" type="checkbox"/> Single Zone <input type="checkbox"/> Multiple Zone		8. Lease Name and Well No. EAGLE 34 K FEDERAL 65 <308957>	
2. Name of Operator LIME ROCK RESOURCES II-A, L.P.		9. API Well No. 30-015-41433	
3a. Address 1111 BAGBY ST., STE 4600 HOUSTON, TX 77002	3b. Phone No. (include area code) 713-292-9526	10. Field and Pool, or Exploratory RED LAKE; GLORIETA-YESO NE <9688>	
4. Location of Well (Report location clearly and in accordance with any State requirements.) At surface 1820' FSL & 2290' FWL At proposed prod. zone 1650' FSL & 2310' FWL		11. Sec., T. R. M. or Blk. and Survey or Area UNIT K - SEC. 34 - T17S - R27E	
14. Distance in miles and direction from nearest town or post office* 7 miles southeast of Artesia, NM		12. County or Parish EDDY	13. State NM
15. Distance from proposed* location to nearest property or lease line, ft. (Also to nearest drig. unit line, if any) 341'	16. No. of acres in lease 160	17. Spacing Unit dedicated to this well 40	
18. Distance from proposed location* to nearest well, drilling, completed, applied for, on this lease, ft. 36	19. Proposed Depth MD 4708' TVD 4700'	20. BLM/BIA Bond No. on file NMB-000716 NMB-000756	
21. Elevations (Show whether DF, KDB, RT, GL, etc.) 3578	22. Approximate date work will start* 09/04/13	23. Estimated duration 2-3 WEEKS	

24. Attachments

The following, completed in accordance with the requirements of Onshore Oil and Gas Order No.1, must be attached to this form:

- | | |
|--|---|
| 1. Well plat certified by a registered surveyor. | 4. Bond to cover the operations unless covered by an existing bond on file (see Item 20 above). |
| 2. A Drilling Plan. | 5. Operator certification |
| 3. A Surface Use Plan (if the location is on National Forest System Lands, the SUPO must be filed with the appropriate Forest Service Office). | 6. Such other site specific information and/or plans as may be required by the BLM. |

25. Signature <i>Lisa Barfield</i>	Name (Printed/Typed) LISA BARFIELD dba PETRO ENERGY GROUP	Date 7/22/2013
------------------------------------	--	-------------------

Title
POA AGENT FOR LIME ROCK RESOURCES II-A, L.P.

Approved by (Signature) <i>/s/George MacDonell</i>	Name (Printed/Typed) <i>/s/George MacDonell</i>	Date JUN - 4 2013
Title FIELD MANAGER	Office CARLSBAD FIELD OFFICE	

Application approval does not warrant or certify that the applicant holds legal or equitable title to those rights in the subject lease which would entitle the applicant to conduct operations thereon.

Conditions of approval, if any, are attached.

APPROVAL FOR TWO YEARS

Title 18 U.S.C. Section 1001 and Title 43 U.S.C. Section 1212, make it a crime for any person knowingly and willfully to make to any department or agency of the United States any false, fictitious or fraudulent statements or representations as to any matter within its jurisdiction.

(Continued on page 2)

*(Instructions on page 2)

Roswell Controlled Water Basin

Approval Subject to General Requirements
& Special Stipulations Attached

SEE ATTACHED FOR
CONDITIONS OF APPROVAL

District I

1625 N. French Dr., Hobbs, NM 88240

District II

1301 W. Grand Avenue, Artesia, NM 88210

District III

1000 Rio Brazos Rd., Aztec, NM 87410

District IV

1220 S. St. Francis Dr., Santa Fe, NM 87505

State of New Mexico

Energy, Minerals & Natural Resources Department

OIL CONSERVATION DIVISION

1220 South St. Francis Dr.

Santa Fe, NM 87505

Form C-102

Revised October 15, 2009

Submit one copy to appropriate

District Office

☐ AMENDED REPORT

WELL LOCATION AND ACREAGE DEDICATION PLAT

¹ API Number 30-015-41433	² Pool Code 96836	³ Pool Name RED LAKE; GLORIETA-YESO NE
⁴ Property Code 308957	⁵ Property Name EAGLE "34" K FEDERAL	⁶ Well Number 65
⁷ OGRID No. 277558	⁸ Operator Name LIME ROCK RESOURCES II A, L.P.	⁹ Elevation 3577.8

¹⁰ Surface Location

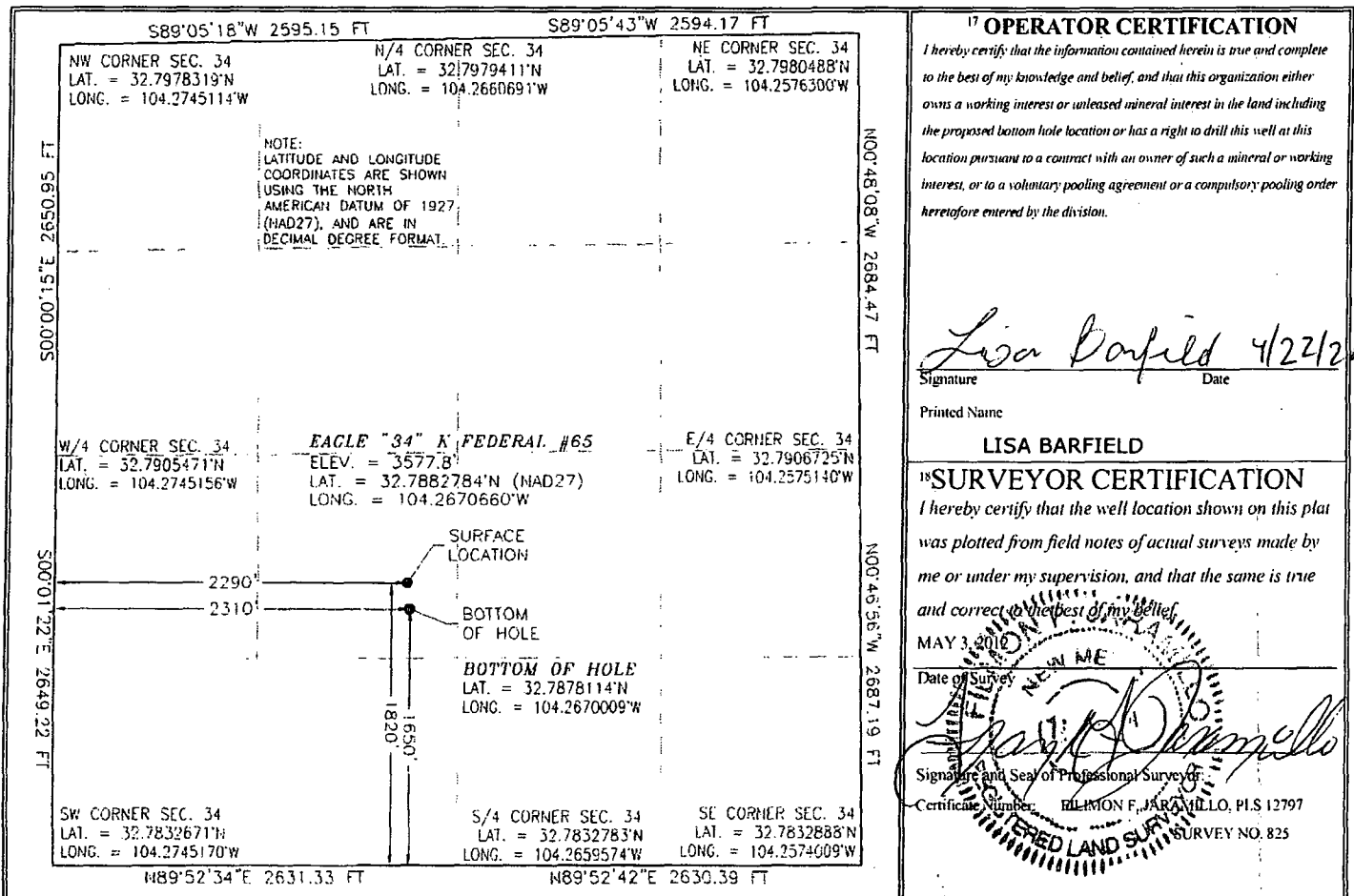
UL or lot no.	Section	Township	Range	Lot Idn	Feet from the	North/South line	Feet from the	East/West line	County
K	34	17 S	27 E		1820	SOUTH	2290	WEST	EDDY

¹¹ Bottom Hole Location If Different From Surface

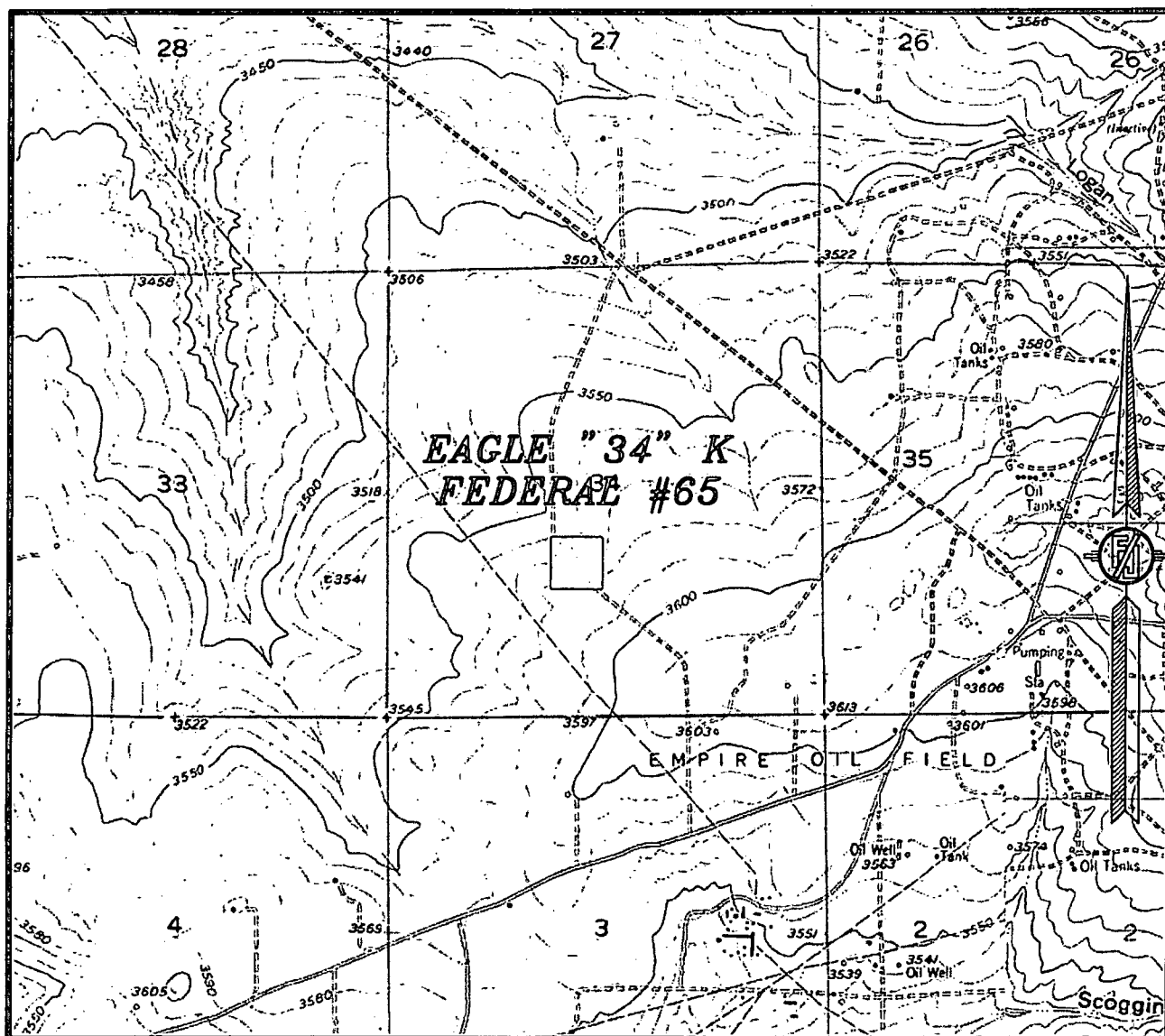
UL or lot no.	Section	Township	Range	Lot Idn	Feet from the	North/South line	Feet from the	East/West line	County
K	34	17 S	27 E		1650	SOUTH	2310	WEST	EDDY

¹² Dedicated Acres	¹³ Joint or Infill	¹⁴ Consolidation Code	¹⁵ Order No.
40			

No allowable will be assigned to this completion until all interests have been consolidated or a non-standard unit has been approved by the division.



SECTION 34, TOWNSHIP 17 SOUTH, RANGE 27 EAST, N.M.P.M.
EDDY COUNTY, STATE OF NEW MEXICO
LOCATION VERIFICATION MAP



USGS QUAD MAP:
SPRING LAKE

NOT TO SCALE

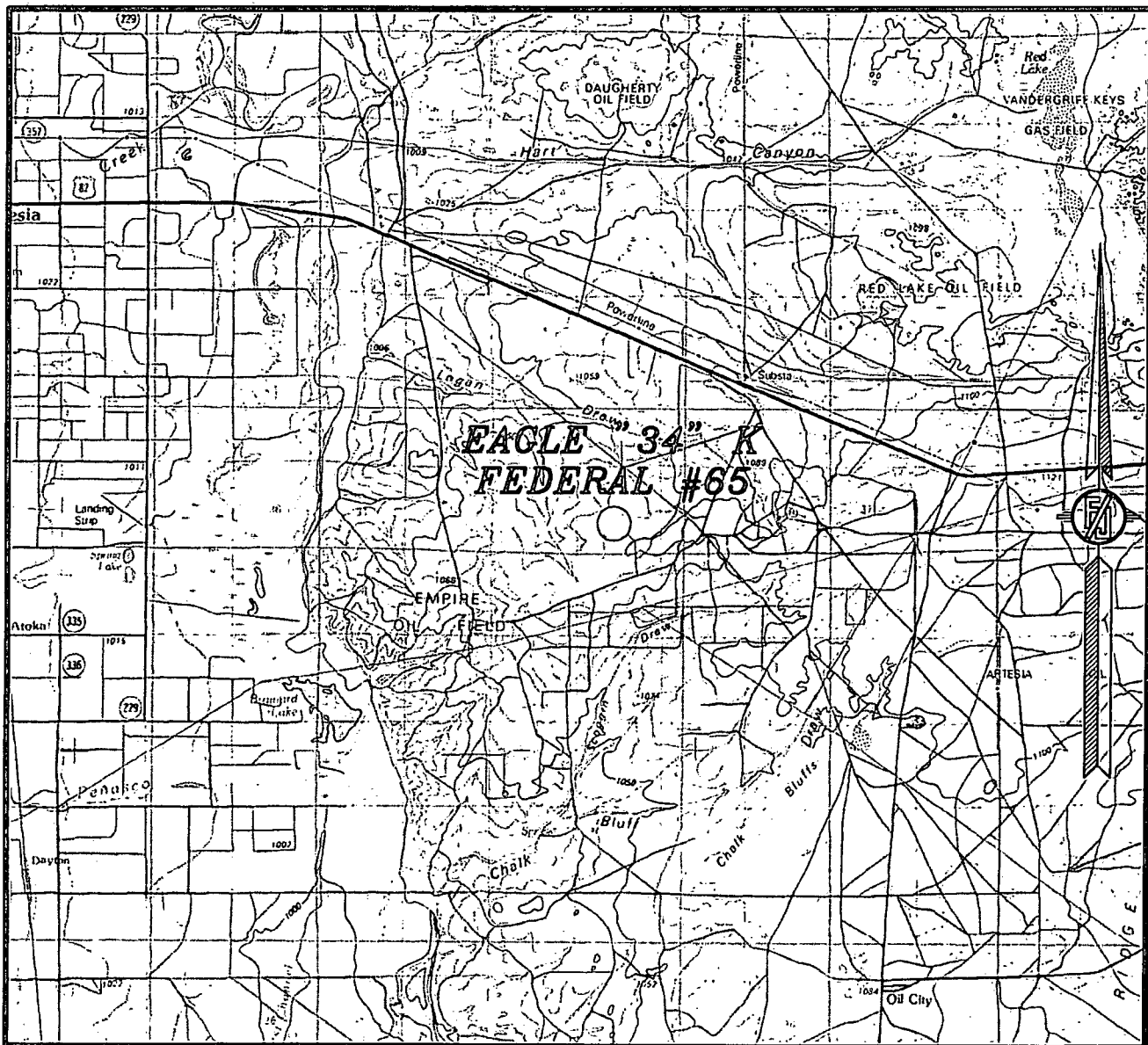
LIME ROCK RESOURCES II-A, L.P.
EAGLE "34" K FEDERAL #65
LOCATED 1820 FT. FROM THE SOUTH LINE
AND 2290 FT. FROM THE WEST LINE OF
SECTION 34, TOWNSHIP 17 SOUTH,
RANGE 27 EAST, N.M.P.M.
EDDY COUNTY, STATE OF NEW MEXICO

MAY 3, 2012

SURVEY NO. 825

MADRON SURVEYING, INC. 301 SOUTH CANAL CARLSBAD, NEW MEXICO
(575) 234-3341

SECTION 34, TOWNSHIP 17 SOUTH, RANGE 27 EAST, N.M.P.M.
EDDY COUNTY, STATE OF NEW MEXICO
VICINITY MAP



NOT TO SCALE

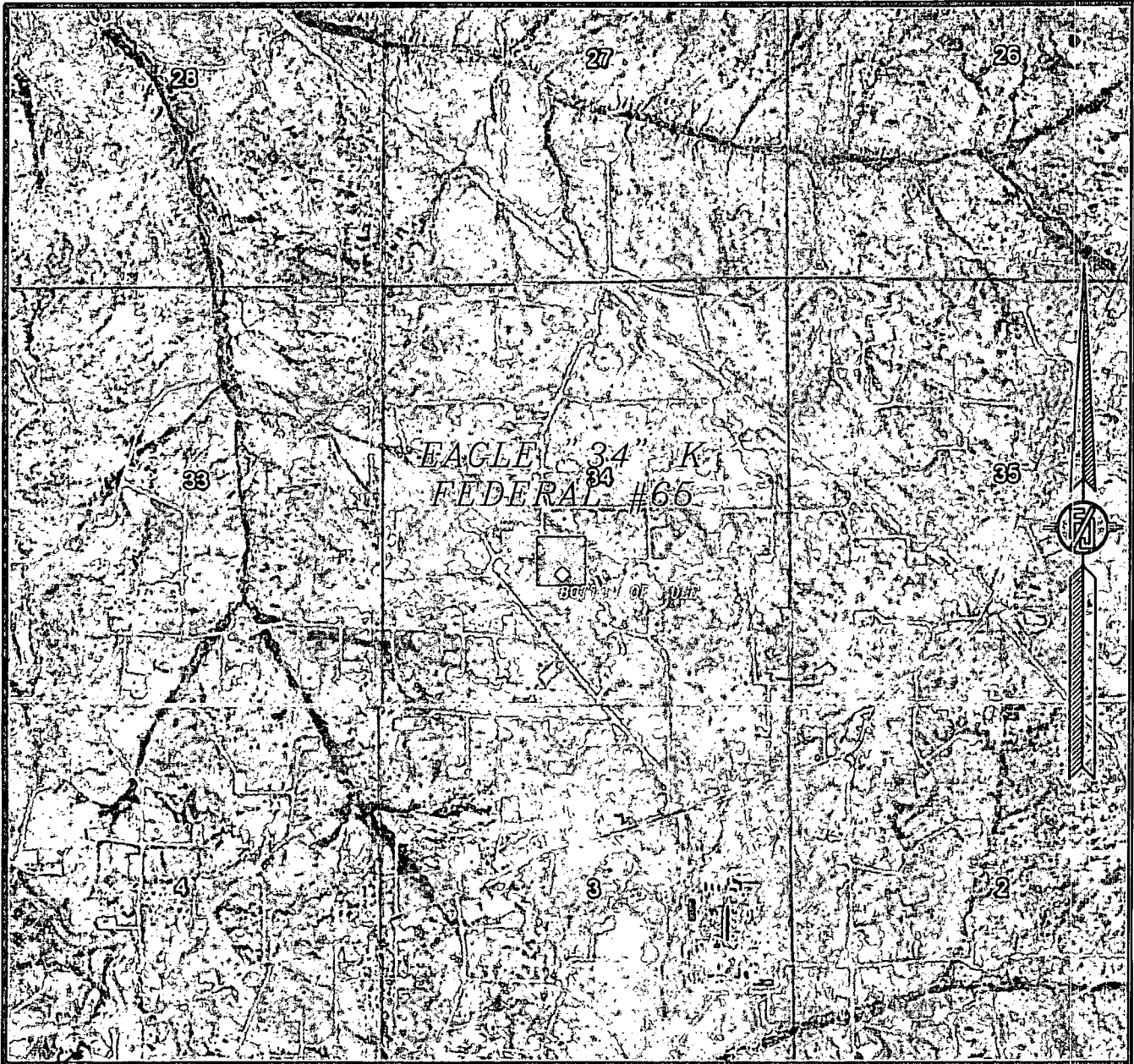
LIME ROCK RESOURCES II-A, L.P.
EAGLE "34" K FEDERAL #65
LOCATED 1820 FT. FROM THE SOUTH LINE
AND 2290 FT. FROM THE WEST LINE OF
SECTION 34, TOWNSHIP 17 SOUTH,
RANGE 27 EAST, N.M.P.M.
EDDY COUNTY, STATE OF NEW MEXICO

MAY 3, 2012

SURVEY NO. 825

MADRON SURVEYING, INC. 301 SOUTH CANAL (575) 234-3341 CARLSBAD, NEW MEXICO

SECTION 34, TOWNSHIP 17 SOUTH, RANGE 27 EAST, N.M.P.M.
EDDY COUNTY, STATE OF NEW MEXICO
AERIAL PHOTO



NOT TO SCALE
AERIAL PHOTO:
GOOGLE EARTH
JULY 2011

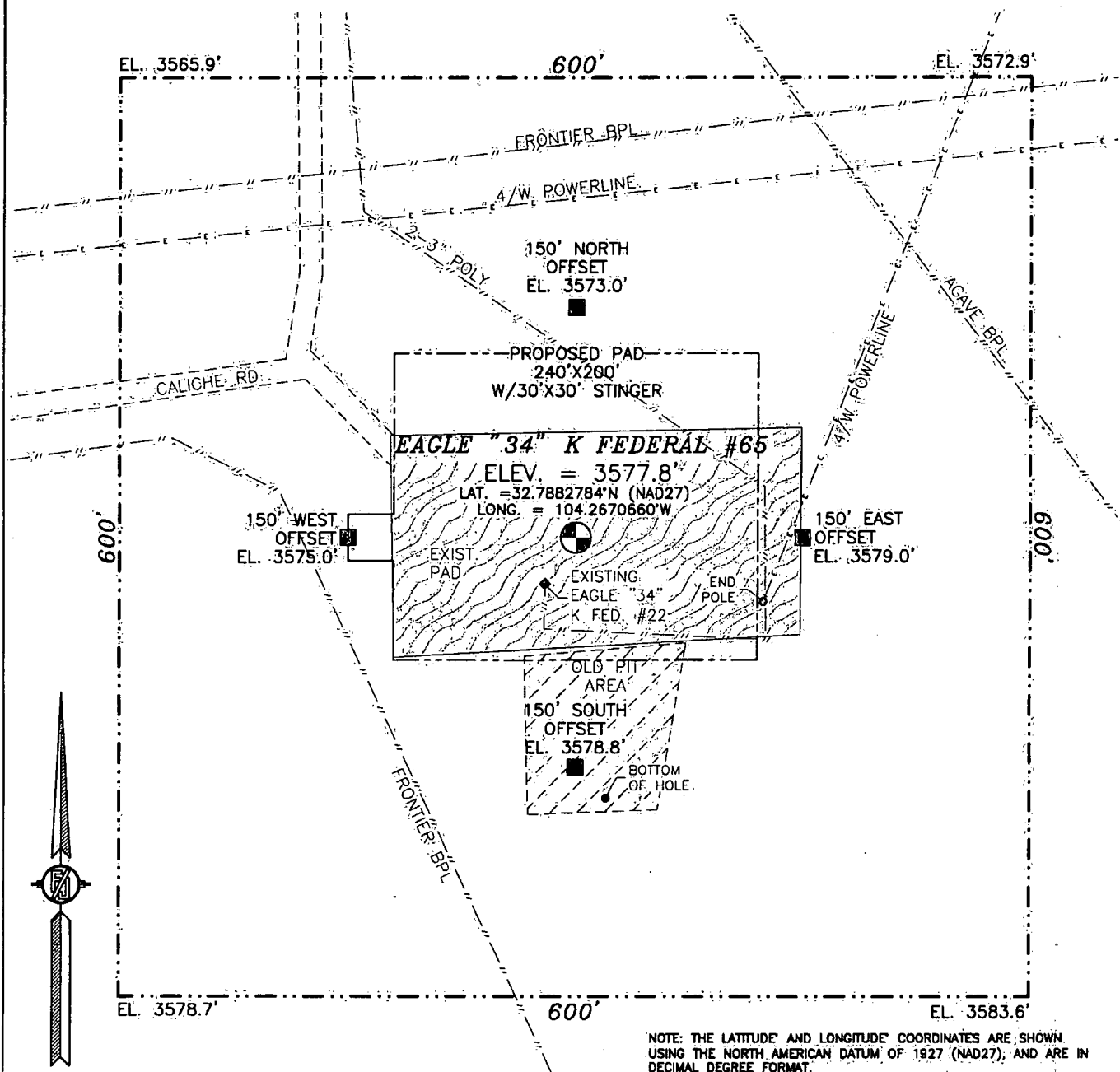
LIME ROCK RESOURCES II-A, L.P.
EAGLE "34" K FEDERAL #65
LOCATED 1820 FT. FROM THE SOUTH LINE
AND 2290 FT. FROM THE WEST LINE OF
SECTION 34, TOWNSHIP 17 SOUTH,
RANGE 27 EAST, N.M.P.M.
EDDY COUNTY, STATE OF NEW MEXICO

MAY 3, 2012

SURVEY NO. 825

MADRON SURVEYING, INC. 301 SOUTH CANAL CARLSBAD, NEW MEXICO
(575) 234-3341

SECTION 34, TOWNSHIP 17 SOUTH, RANGE 27 EAST, N.M.P.M.
EDDY COUNTY, STATE OF NEW MEXICO



010 50 100 200

SCALE 1" = 100'

DIRECTIONS TO LOCATION

FROM PAVED CR. 225 (EMPIRE) AND PAVED CR. 227 (LITTLE DIAMOND) GO WEST-SOUTHWEST ON CR. 227 0.5 MILES, TURN RIGHT ON CALICHE ROAD AND GO NORTHWEST 0.8 MILES BEND, RIGHT AND GO EAST-NORTHEAST 0.15 MILES, TURN RIGHT AND GO SOUTHEAST 75' TO EXIST. PAD AND LOCATION IS SOUTHEAST 138° ON EXIST. PAD.

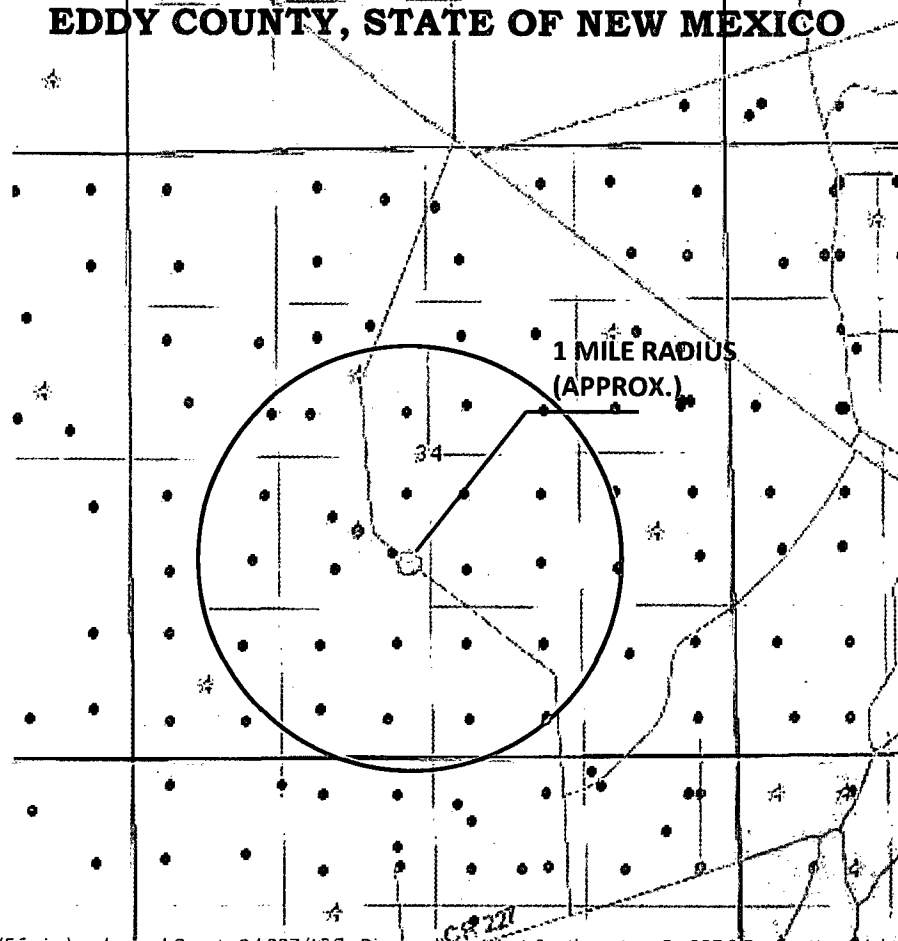
LIME ROCK RESOURCES II-A, L.P.
EAGLE "34" K FEDERAL #65
LOCATED 1820 FT. FROM THE SOUTH LINE
AND 2290 FT. FROM THE WEST LINE OF
SECTION 34, TOWNSHIP 17 SOUTH,
RANGE 27 EAST, N.M.P.M.
EDDY COUNTY, STATE OF NEW MEXICO

MAY 3, 2012

SURVEY NO. 825

MADRON SURVEYING, INC. 301 SOUTH CANAL (575) 234-3341 CARLSBAD, NEW MEXICO

**SECTION 34, TOWNSHIP 17 SOUTH, RANGE 27 EAST, N.M.P.M.
EDDY COUNTY, STATE OF NEW MEXICO**



Directions to location:

From paved County Rd 225 (Empire) and paved County Rd 227 (Little Diamond), go West-Southwest on Cr. 227 0.5 miles, turn right on Caliche Rd and go Northwest 0.8 miles bend right and go East-Northeast 0.15 miles, turn right and go Southeast 75' to existing pad and location is Southeast 136' on existing pad.

NOT TO SCALE - ONE SQUARE ON THE MAP MEASURES 3 MILES X 3 MILES

WELL COORDINATES:

LAT. = 32.7882784 N
LONG. = 104.2670660 W
(NAD 27- SEE NOTE)

NOTE: THE LATITUDE AND LONGITUDE COORDINATES ARE SHOWN USING THE NORTH AMERICAN DATUM OF 1927 (NAD 27) AND ARE IN DECIMAL DEGREE FORMAT.

LEASE

EAGLE "34" K FEDERAL #65

COUNTY/PARISH AND STATE
EDDY COUNTY NEW MEXICO

SURVEY INFORMATION
MADRON SURVEYING, INC.
CARLSBAD, NEW MEXICO
SURVEY NO. 825. 5/3/2012

Client

Lime Rock Resources II-A, L.P.

Title

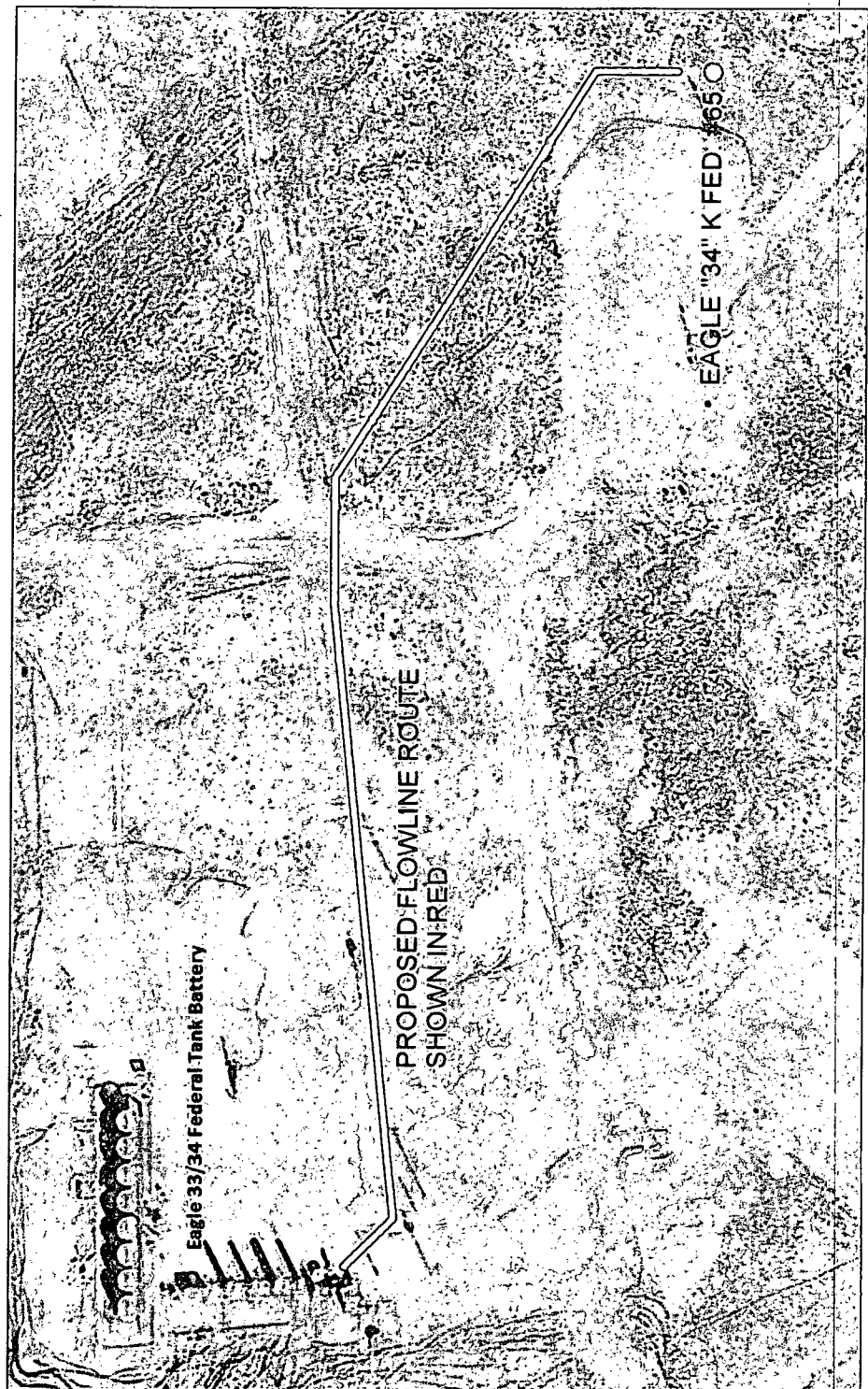
EAGLE "34" K FEDERAL #65
LOCATED 1650 FT. FROM THE SOUTH LINE AND 2460 FT. FROM THE WEST LINE OF SECTION 34, TOWNSHIP 17 SOUTH, RANGE 27 EAST, N.M.P.M. EDDY COUNTY, STATE OF NEW MEXICO

Petro Energy Group
12777 Jones Road,
Suite 385,
Houston, TX 77070
Tel. 281 890 1818



SECTION 34, TOWNSHIP 17 SOUTH, RANGE 27 EAST, N.M.P.M.
EDDY COUNTY, STATE OF NEW MEXICO

WELL COORDINATES:
LAT. = 32.7882784° N
LONG. = 104.2670660° W
(NAD 27 - SEE NOTE)
NOTE: THE LATITUDE AND LONGITUDE
COORDINATES ARE SHOWN USING THE
NORTH AMERICAN DATUM OF 1927 (NAD27)
AND ARE IN DECIMAL DEGREE FORMAT.



Directions to Location:

From paved County Road 225 (Empire) and paved County Road 227 (Little Diamond), go West-Southwest on County 227 0.5 miles. Turn right on Caliche Road and go Northwest 0.8 miles. Bend right and go East-Northeast 0.15 miles. Turn right and go Southeast 75 feet to existing pad and location is Southeast 138 feet on existing pad.



12777 Jones Road,
Suite 385,
Houston TX 77070
Tel. 281 890 1818
www.peg-us.com

LEASE
EAGLE "34" K FEDERAL #65
COUNTY / PARISH AND STATE
EDDY COUNTY NEW MEXICO
SURVEY INFORMATION
MADRON SURVEYING, INC.
CARLSBAD, NEW MEXICO
SURVEY NO. 825, 5/3/2012
DRAWING NO. AND REVISION
2013-LR-E34K-65-004
REV. 1

CLIENT

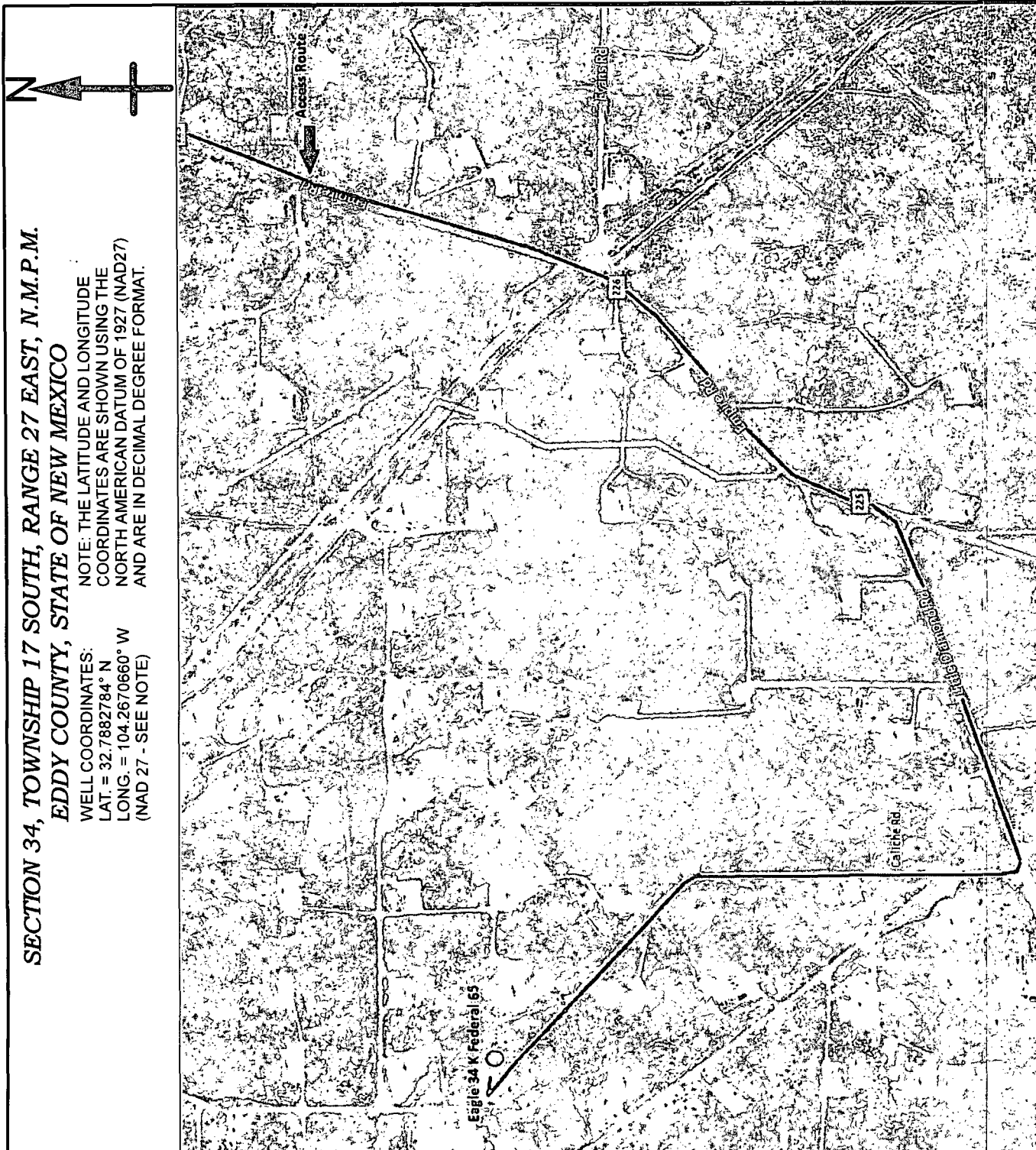
Lime Rock Resources II-A, L.P.

TITLE

EAGLE "34" K FEDERAL #65

LOCATED 1820 FT. FROM THE SOUTH LINE AND 2290 FT. FROM THE
WEST LINE OF SECTION 34, TOWNSHIP 17 SOUTH, RANGE 27
EAST, N.M.P.M. EDDY COUNTY STATE OF NEW MEXICO

NOT TO SCALE



SECTION 34, TOWNSHIP 17 SOUTH, RANGE 27 EAST, N.M.P.M.

EDDY COUNTY, STATE OF NEW MEXICO

WELL COORDINATES:
 LAT. = 32.7882784° N
 LONG. = 104.2670660° W
 (NAD 27 - SEE NOTE)

NOTE: THE LATITUDE AND LONGITUDE
 COORDINATES ARE SHOWN USING THE
 NORTH AMERICAN DATUM OF 1927 (NAD27)
 AND ARE IN DECIMAL DEGREE FORMAT.

Directions to Location:

From paved County Road 225 (Empire) and paved County Road 227 (Little Diamond), go West-Southwest on County 227 0.5 miles. Turn right on Caliche Road and go Northwest 0.8 miles. Bend right and go East-Northeast 0.15 miles. Turn right and go Southeast 75 feet to existing pad and location is Southeast 138 feet on existing pad.



12777 Jones Road,
 Suite 385,
 Houston TX 77070
 Tel. 281 890 1818
 www.peg-us.com

LEASE
EAGLE "34" K FEDERAL #65
 COUNTY / PARISH AND STATE
EDDY COUNTY NEW MEXICO

SURVEY INFORMATION
MADRON SURVEYING, INC.
CARLSBAD, NEW MEXICO
SURVEY NO. 825. 5/3/2012
 DRAWING NO. AND REVISION
2013-LR-E34K-65-004
REV. 2

CLIENT

Lime Rock Resources II-A, L.P.

TITLE

EAGLE "34" K FEDERAL #65

LOCATED 1820 FT. FROM THE SOUTH LINE AND 2290 FT. FROM THE
 WEST LINE OF SECTION 34, TOWNSHIP 17 SOUTH, RANGE 27
 EAST, N.M.P.M. EDDY COUNTY STATE OF NEW MEXICO

NOT TO SCALE

LIME ROCK RESOURCES II- A, L.P

APD DRILLING PLAN

OPERATOR: LIME ROCK RESOURCES II- A, L.P

WELL: Eagle 34 K Federal 65

LOCATION: Surface Location: 1820' FSL & 2290' FWL
Bottom Hole Location: 1650' FSL & 2310' FWL

Unit K-Sec.34-T17S-R27E

Eddy County, NM

LEASE NUMBER: LC 067849

In attachment and accordance to BLM Form 3160-3, we respectfully submit the following information to drill the subject well as a "shallow S" deviated well with rotary tools to a total vertical depth of 4700', set production casing, and then move the rig off to use a workover rig to complete the well:

1. & 2. ESTIMATED TOPS OF GEOLOGIC FORMATIONS AND MARKERS:

Formation	MD	TVD	Formation Content
Quaternary – Alluvium	Surface	Surface	
7 Rivers	320'	320'	
Queen	827'	826'	Oil/Gas
Grayburg	1300'	1295'	Oil/Gas
San Andres	1566'	1559'	Oil/Gas
Glorieta	2926'	2918'	Oil/Gas
Yeso	3040'	3032'	Oil/Gas
Tubb	4431'	4423'	Oil/Gas
TD	4708'	4700'	Oil/Gas

The surface formation Geologic name is recent Permian with Quaternary Alluvium, which includes other surficial deposits. The elevation of the unprepared ground is 3578' Above Sea Level. The distance to the nearest Fresh Water Well is 1 mile, with usable water depth recorded to 330'. Usable water will be protected from salts, anhydrites along with oil and gas contamination with a surface casing string cemented to surface.

3. PRESSURE CONTROL:

(2000 psi BOPE SYSTEM WITH SCHEMATIC ATTACHED)

The blowout preventer equipment (BOP) will consist of a 2000 psi rated, "XLT 11" type, National VARCO double ram preventer that will be tested to a maximum pressure of 2000 psi. The unit will be hydraulically operated and the ram type preventer will be equipped with blind rams on top and drill pipe rams on bottom. The 2M BOP will be installed on the 8 5/8" surface casing and utilized continuously until total depth is reached. All casing strings will be tested as per Onshore Order #2. This also includes a thirty-day (30) test, should the rig still be operating on the same well for thirty days.

Pipe rams will be operated and checked each 24-hour period and each time the drill pipe is out of the hole. These functional tests will be documented on the daily drilling logs.

The BOP equipment will consist of the following:

- Double ram with blind rams (top) and pipe rams (bottom),
- Drilling spool, or blowout preventer with 2 side outlets (choke side shall be a 2" minimum diameter, kill side will be at least 2 inch diameter),
- Kill line (2 inch minimum),
- A minimum of 2 choke line valves (2 inch minimum),
- 2 inch diameter choke line,

- 2 kill valves, one of which will be a check valve (2 inch minimum),
- 2 chokes, one of which will be capable of remote operation, pressure gauge on choke manifold,
- Upper Kelly cock valve with handle available,
- Safety valve and subs to fit all drill string connections in use,
- All BOPE connections subjected to well pressure will be flanged, welded, or clamped,
- A Fill-up line above the uppermost preventer.

4. PROPOSED CASING ("CSG")

CASING TYPE	CASING DEPTH, FT	HOLE SIZE, IN.	CASING SIZE, IN.	CASING WEIGHT, LBS/FT	CASING GRADE	CASING THREAD	API, (Y) OR (N)	NEW (N) OR USED (U)
CONDUCTOR	80	26.000	20.000	91.5	B	WELDED	N	N
SURFACE	400	12.250	8.625	24.0	J-55	ST&C	Y	N
PRODUCTION	4708	7.875	5.500	17.0	J-55	LT&C	Y	N

All casing designed with a minimum of:

BURST SAFETY FACTOR

1.18

COLLAPSE SAFETY FACTOR

1.2

TENSION SAFETY FACTOR

2.0

5. PROPOSED CEMENT ("CMT") PROGRAM

CASING TYPE	CASING DEPTH, FT	# SACKS CMT **	CMT TOP	CMT DENSIT Y, ppg	CMT YIELD, CU. FT. PER SACK	CMT EXCESS %	CMT BLEND *
CONDUCTOR	80	80	SURF	READY MIX			
SURFACE	400	350	SURF	14.8	1.4	200	1
PRODUCTION	4708	300	SURF	12.8	1.903	80	2
		610	1566	14.8	1.328	50	3

* CMT BLENDS:

(1) CI C Cmt +0.25 lbs/sk Cello Flake +2% CaCl₂

(2) Production casing lead slurry: (35:65) Poz/CI C Cmt + 5% NaCl +.25lb/sk Cello Flake+ 5lbs/sk LCM-1+ 0.2% R-3 +6% Gel

(3) Production casing tail slurry: Class C w/ 0.6% R-3 and 1/4 pps cello flake

** Cement volumes will be adjusted based on caliper log volumes and depths of casing.

*** A 13 3/8", 48#, H-40, ST&C, New, API contingency string will be set at 375' in a reamed 17 1/2" hole if circulation is lost in cave or karst (cave & karst potential to 350') and not regained. Contingency string will be cemented to the surface with 400 sacks (536 cubic feet) Class C + 1/4 pound per sack cello flake +2% CaCl₂ mixed to yield 1.34 cubic feet per sack and 14.8 pounds per gallon. Excess >100%

Upon the setting of a 13 3/8" contingency casing string, a 13 5/8" x 13 3/8" weld on wellhead will be installed. A 13 3/8" to 11" adapter flange will be installed and the 11" XLT 2000 psi NOV double ram BOP/BOPE (Schematic attached) will be installed. The BOP will be tested against the casing to 70% of

the internal yield pressure of the 13 3/8", 48#, H-40, ST&C (1211 psi) casing and held for 30 min before drilling out the 13 3/8" casing shoe. The formation will be drilled with a 10 3/4" bit +/- 50 ft past the 13 3/8" casing shoe into competent formation and 8 5/8" casing will be set and cemented with 200 sacks (268 cubic feet) Class C + 1/4 pound per sack cello flake +2% CaCl₂ mixed to yield 1.34 cubic feet per sack and 14.8 pounds per gallon. Excess >125%

6. TYPE(S) AND CHARACTERISTIC(S) OF MUD SYSTEM:

An electronic/mechanical mud monitor with a minimum pit volume totalizer, stroke counter, and flow sensor will be used. All necessary mud products will be onsite to handle any abnormal hole conditions that could possibly be encountered during the drilling of this well.

Expected Drilling and Mud Properties			
Depth	0-400	400-4558	4558-4708
Mud Type	Fresh Water	Salt Water w/ Gel	Salt Water w/ Gel & Starch
Properties			
MW	8.5-9.2	9.9-10.2	9.9-10.2
pH	10	10-11.5	10-11.5
WL	NC	NC	15-20
Vis	28-34	30-32	32-35
MC	NC	NC	1
Solids	NC	<2%	<3%
Pump Rate	300-350gpm	350-400gpm	400-450gpm
Special	LCM as Req	Salt Gel, Acid & MF as req'd. Pmp Hi Vis sweeps to control Solids	Salt Gel, Acid & MF as req'd. Pmp Hi Vis sweeps to control Solids

7. TESTING, CORING, and LOGGING PROCEDURES:

Testing Program: None

Electric Logging Program: Gamma Ray – Dual Laterlog – Compensated Neutron/Density Log from total depth to surface casing
Surface casing to surface: Gamma Ray – Neutron log

Coring Program: None

8. EXPECTED BOTTOM HOLE PRESSURE and TEMPERATURE:

Expected BHP: BHP 2072 PSI based on 0.44 x TVD (4700')

Expected BHT: 125° F.

9. ABNORMAL CONDITIONS:

Lost Circulation- Well to be drilled in a cave/karsts area, thus loss of circulation down to 350' is possible during the drilling phase. See contingency casing string in item 5.

No Abnormal Temperature or Pressure Expected during the drilling or completion stage.

H₂S is present in producing wells in the area. H₂S is not expected in the wellbore during the drilling of this well, but a H₂S drilling plan will be in place and a summary of the plan is attached, and will be followed according to Onshore Oil and Gas Order No. 6. All personnel will be familiar with all aspects of the safe operation of equipment being used to drill this well.

Spud Date and Duration of Operations:

Anticipated spud date is after September 4, 2013. Move in operations and drilling is expected to take 10 days. An additional 14 days will be needed to complete the well and to construct surface facilities.

Well Plan Details

LIMEROCK

WELLPATH ENERGY

AFE

Well: Eagle 34K Federal #65 (0)

Job

Rig:

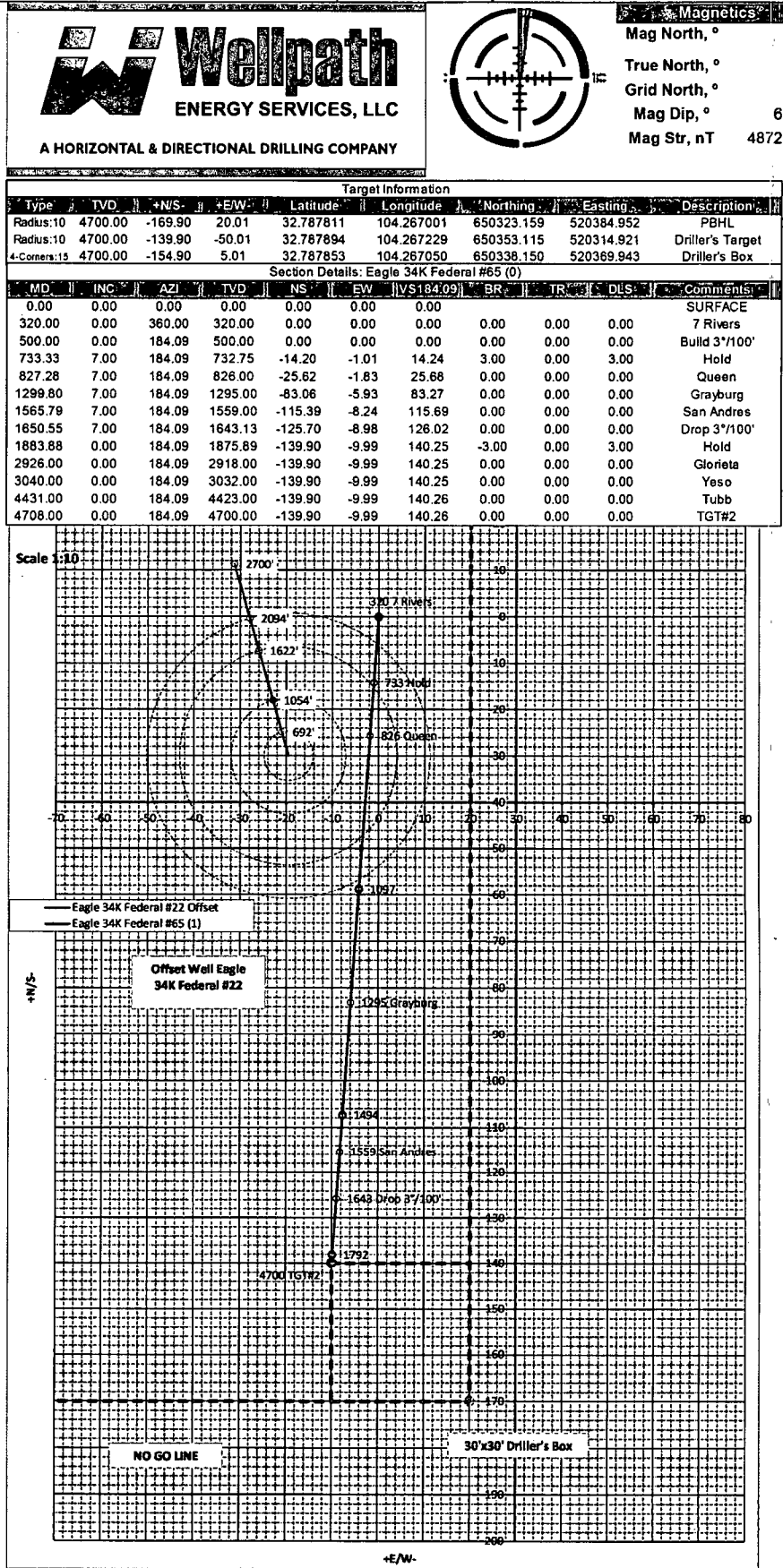
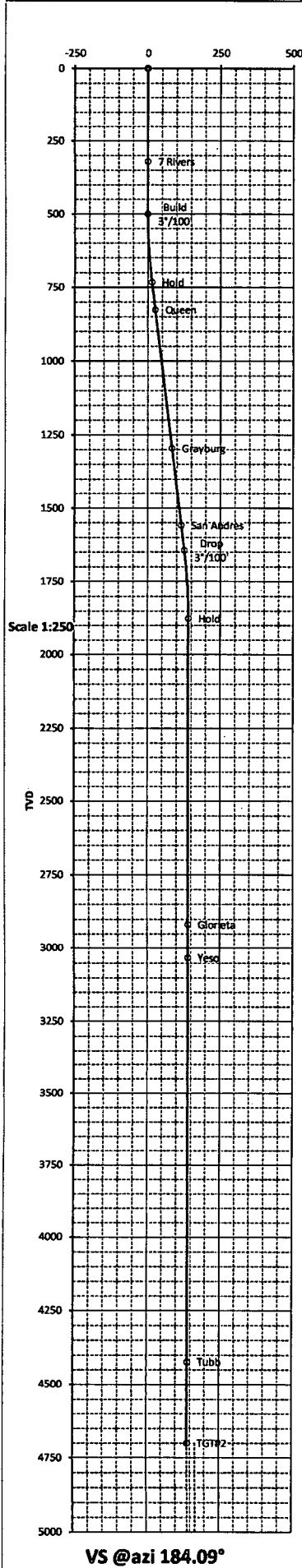
Eddy County, NM

Redlake

St. Plane - NAD27

3/27/2013

Well Information										
Rig:		Well: Eagle 34K Federal #65 (0)		Map Details:			Magnetics			
Northing	650493.042	Northing	650493.040	System	2 - St. Plane		Decl., °	7:730		
Easting	520364.840	Easting	520364.840	Datum	1927 - NAD27		Dip, °	60.550		
Elevation	3591.200	Elevation	3591.200	Zone	3001 - New Mexico East		True N	0.000		
Latitude	32.788278	Latitude	32.788278	Scale, Fac	0.999910		Mag N	7:730		
Longitude	104.267066	Longitude	104.267066	Converg:	0.035886		Field, nT	48727.40		
Units	Feet	TVD Ref	MSL3577.8+KB13.4							
Target Information										
Type	TVD	+N/S	+E/W	Latitude	Longitude	Northing	Easting	Description		
Radius:1	4700.00	-169.90	20.01	32.787811	104.267001	650323.159	520384.952	PBHL		
Radius:1	4700.00	-139.90	-9.99	32.787894	104.267099	650353.140	520354.934	Driller's Target		
4-Corners:1	4700.00	-154.90	5.01	32.787853	104.267050	650338.150	520369.943	Driller's Box		
4-Corners:1	0.00	-169.90	20.01	32.787811	104.267001	650323.159	520384.952	NO GO HARDLINE		
Radius:5.33	692.00	-30.00	-19.50	32.788196	104.267129	650463.030	520345.359	Offset Eagle 34K Fed#22 692'		
Radius:12.45	1054.00	-30.00	-19.50	32.788196	104.267129	650463.030	520345.359	Offset Eagle 34K Fed#22 1054'		
Radius:23.6	1622.00	-30.00	-19.50	32.788196	104.267129	650463.030	520345.359	Offset Eagle 34K Fed#22 1622'		
Radius:30.81	2094.00	-30.00	-19.50	32.788196	104.267129	650463.030	520345.359	Offset Eagle 34K Fed#22 2094'		
Radius:1	0.00	825.44	-2289.30	32.790547	104.274516	651317.048	518075.019	NW Corner		
Radius:1	0.00	-1823.04	-2289.92	32.783267	104.274517	648668.567	518076.061	SW Corner		
Radius:1	0.00	-1819.05	340.71	32.783278	104.265957	648674.210	520706.686	SE Corner		
Section Details: Eagle 34K Federal #65 (0)										
MD	INC	AZI	TVD	NS	EW	VS184.09	BR	TR	DLS	Comments
0.00	0.00	0.00	0.00	0.00	0.00	0.00				SURFACE
320.00	0.00	360.00	320.00	0.00	0.00	0.00	0.00	0.00	0.00	7 Rivers
500.00	0.00	184.09	500.00	0.00	0.00	0.00	0.00	0.00	0.00	Build 3°/100'
733.33	7.00	184.09	732.75	-14.20	-1.01	14.24	3.00	0.00	3.00	Hold
827.28	7.00	184.09	826.00	-25.62	-1.83	25.68	0.00	0.00	0.00	Queen
1299.80	7.00	184.09	1295.00	-83.06	-5.93	83.27	0.00	0.00	0.00	Grayburg
1565.79	7.00	184.09	1559.00	-115.39	-8.24	115.69	0.00	0.00	0.00	San Andres
1650.55	7.00	184.09	1643.13	-125.70	-8.98	126.02	0.00	0.00	0.00	Drop 3°/100'
1883.88	0.00	184.09	1875.89	-139.90	-9.99	140.25	-3.00	0.00	3.00	Hold
2926.00	0.00	184.09	2918.00	-139.90	-9.99	140.25	0.00	0.00	0.00	Glorieta
3040.00	0.00	184.09	3032.00	-139.90	-9.99	140.25	0.00	0.00	0.00	Yeso
4431.00	0.00	184.09	4423.00	-139.90	-9.99	140.26	0.00	0.00	0.00	Tubb
4708.00	0.00	184.09	4700.00	-139.90	-9.99	140.26	0.00	0.00	0.00	TGT#2



Survey/Planning Report

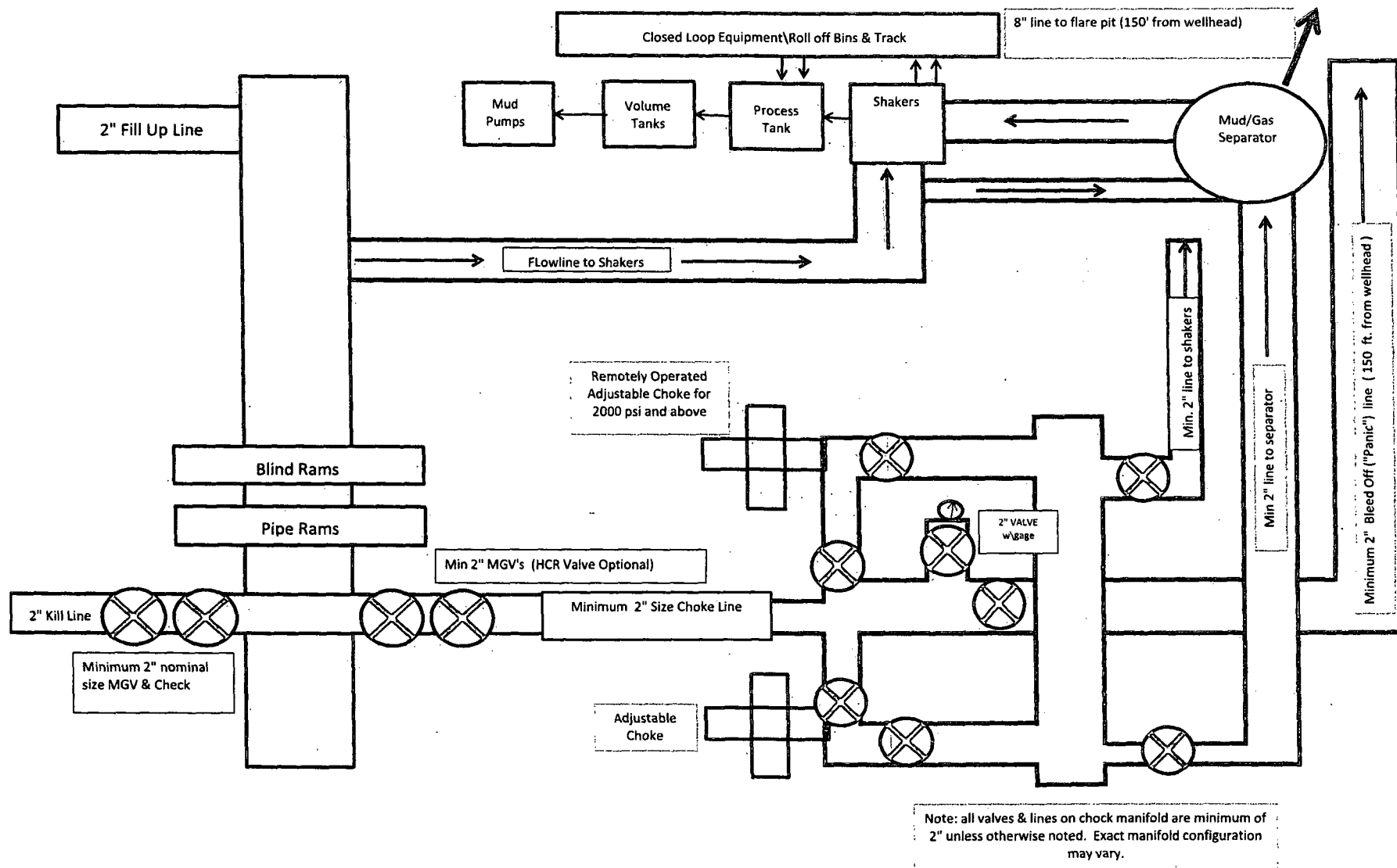
Operator	LIMEROCK	Northing	650493.040	Date	27-Mar-13
Dir. Co.	WELLPATH ENERGY	Easting	520364.840	System	2 - St. Plane
Well Name	Eagle 34K Federal #65 (0)	Elevation	3591.20	Datum	1927 - NAD27
Location	Eddy County, NM	Latitude	32.788278	Zone	3001 - New Mexico East
Rig		Longitude	104.267066	Scale Fac.	0.999910
Job		Units	Feet	Converg.	0.035886

MD	INC	AZI	TVD	N/S	E/W	VS@184.09°	BR	TR	DLS
0.00	0.00	0.00	0.00	0.00	0.00	0.00	0.00	0.00	0.00
0: SURFACE									
100.00	0.00	360.00	100.00	0.00	0.00	0.00	0.00	0.00	0.00
200.00	0.00	360.00	200.00	0.00	0.00	0.00	0.00	0.00	0.00
300.00	0.00	360.00	300.00	0.00	0.00	0.00	0.00	0.00	0.00
320.00	0.00	360.00	320.00	0.00	0.00	0.00	0.00	0.00	0.00
320: 7 Rivers									
400.00	0.00	360.00	400.00	0.00	0.00	0.00	0.00	0.00	0.00
500.00	0.00	360.00	500.00	0.00	0.00	0.00	0.00	0.00	0.00
500.00	0.00	184.09	500.00	0.00	0.00	0.00	0.00	0.00	0.00
500: Build 3°/100'									
600.00	3.00	184.09	599.95	-2.61	-0.19	2.62	3.00	0.00	3.00
700.00	6.00	184.09	699.63	-10.44	-0.75	10.46	3.00	0.00	3.00
733.33	7.00	184.09	732.75	-14.20	-1.01	14.24	3.00	0.00	3.00
733.33: Hold									
800.00	7.00	184.09	798.92	-22.30	-1.59	22.36	0.00	0.00	0.00
827.28	7.00	184.09	826.00	-25.62	-1.83	25.68	0.00	0.00	0.00
827.28: Queen									
900.00	7.00	184.09	898.18	-34.46	-2.46	34.55	0.00	0.00	0.00
1000.00	7.00	184.09	997.43	-46.62	-3.33	46.73	0.00	0.00	0.00
1100.00	7.00	184.09	1096.69	-58.77	-4.20	58.92	0.00	0.00	0.00
1200.00	7.00	184.09	1195.94	-70.93	-5.07	71.11	0.00	0.00	0.00
1299.80	7.00	184.09	1295.00	-83.06	-5.93	83.27	0.00	0.00	0.00
1299.8: Grayburg									
1300.00	7.00	184.09	1295.20	-83.08	-5.94	83.30	-0.05	-0.05	0.05
1400.00	7.00	184.09	1394.45	-95.24	-6.80	95.48	0.00	0.00	0.00
1500.00	7.00	184.09	1493.71	-107.40	-7.67	107.67	0.00	0.00	0.00
1565.79	7.00	184.09	1559.00	-115.39	-8.24	115.69	0.00	0.00	0.00
1565.79: San Andres									
1600.00	7.00	184.09	1592.96	-119.55	-8.54	119.86	0.00	0.00	0.00
1650.55	7.00	184.09	1643.13	-125.70	-8.98	126.02	0.00	0.00	0.00
1650.55: Drop 3°/100'									
1700.00	5.52	184.09	1692.29	-131.07	-9.36	131.41	-3.00	0.00	3.00
1800.00	2.52	184.09	1792.03	-138.06	-9.86	138.41	-3.00	0.00	3.00
1883.88	0.00	184.09	1875.89	-139.90	-9.99	140.25	-3.00	0.00	3.00
1883.88: Hold									
1900.00	0.00	184.09	1892.00	-139.90	-9.99	140.25	0.00	0.00	0.00
2000.00	0.00	184.09	1992.00	-139.90	-9.99	140.25	0.00	0.00	0.00
2100.00	0.00	184.09	2092.00	-139.90	-9.99	140.25	0.00	0.00	0.00
2200.00	0.00	184.09	2192.00	-139.90	-9.99	140.25	0.00	0.00	0.00
2300.00	0.00	184.09	2292.00	-139.90	-9.99	140.25	0.00	0.00	0.00
2400.00	0.00	184.09	2392.00	-139.90	-9.99	140.25	0.00	0.00	0.00
2500.00	0.00	184.09	2492.00	-139.90	-9.99	140.25	0.00	0.00	0.00
2600.00	0.00	184.09	2592.00	-139.90	-9.99	140.25	0.00	0.00	0.00
2700.00	0.00	184.09	2692.00	-139.90	-9.99	140.25	0.00	0.00	0.00
2800.00	0.00	184.09	2792.00	-139.90	-9.99	140.25	0.00	0.00	0.00
2900.00	0.00	184.09	2892.00	-139.90	-9.99	140.25	0.00	0.00	0.00
2926.00	0.00	184.09	2918.00	-139.90	-9.99	140.25	0.00	0.00	0.00
2926: Glorieta									
3000.00	0.00	184.09	2992.00	-139.90	-9.99	140.25	0.00	0.00	0.00
3040.00	0.00	184.09	3032.00	-139.90	-9.99	140.25	0.00	0.00	0.00



Survey/Planning Report									
Operator	LIMEROCK	Northing	650493.040	Date	27-Mar-13				
Dir. Co.	WELLPATH ENERGY	Easting	520364.840	System	2 - St. Plane				
Well Name	Eagle 34K Federal #65 (0)	Elevation	3591.20	Datum	1927 - NAD27				
Location	Eddy County, NM	Latitude	32.788278	Zone	3001 - New Mexico East				
Rig		Longitude	104.267066	Scale Fac.	0.999910				
Job		Units	Feet	Converg.	0.035886				
MD	INC	AZI	TVD	+N/S-	+E/W-	VS@184.09°	BR	TR	DLS
3040: Yeso									
3100.00	0.00	184.09	3092.00	-139.90	-9.99	140.25	0.00	0.00	0.00
3200.00	0.00	184.09	3192.00	-139.90	-9.99	140.25	0.00	0.00	0.00
3300.00	0.00	184.09	3292.00	-139.90	-9.99	140.26	0.00	0.00	0.00
3400.00	0.00	184.09	3392.00	-139.90	-9.99	140.26	0.00	0.00	0.00
3500.00	0.00	184.09	3492.00	-139.90	-9.99	140.26	0.00	0.00	0.00
3600.00	0.00	184.09	3592.00	-139.90	-9.99	140.26	0.00	0.00	0.00
3700.00	0.00	184.09	3692.00	-139.90	-9.99	140.26	0.00	0.00	0.00
3800.00	0.00	184.09	3792.00	-139.90	-9.99	140.26	0.00	0.00	0.00
3900.00	0.00	184.09	3892.00	-139.90	-9.99	140.26	0.00	0.00	0.00
4000.00	0.00	184.09	3992.00	-139.90	-9.99	140.26	0.00	0.00	0.00
4100.00	0.00	184.09	4092.00	-139.90	-9.99	140.26	0.00	0.00	0.00
4200.00	0.00	184.09	4192.00	-139.90	-9.99	140.26	0.00	0.00	0.00
4300.00	0.00	184.09	4292.00	-139.90	-9.99	140.26	0.00	0.00	0.00
4400.00	0.00	184.09	4392.00	-139.90	-9.99	140.26	0.00	0.00	0.00
4431.00	0.00	184.09	4423.00	-139.90	-9.99	140.26	0.00	0.00	0.00
4431: Tubb									
4500.00	0.00	184.09	4492.00	-139.90	-9.99	140.26	0.00	0.00	0.00
4600.00	0.00	184.09	4592.00	-139.90	-9.99	140.26	0.00	0.00	0.00
4700.00	0.00	184.09	4692.00	-139.90	-9.99	140.26	0.00	0.00	0.00
4708.00	0.00	184.09	4700.00	-139.90	-9.99	140.26	0.00	0.00	0.00
4708: TGT#2									





**11" Minimum 2000 psi BOP and
Minimum 2000 psi BOPE System Schematic
W/ Closed Loop System Equipment**

LIME ROCK RESOURCES II-A, L.P

Design: Closed Loop System with roll-off steel bins (pits)

CRI/HOBBS will supply (2) bins (100 bbl) volume, rails and transportation relating to the Close Loop System. Specification of the Closed Loop System is attached.

Contacts: Gary Wallace (432) 638-4076 Cell (575) 393-1079 Office

Scomi Oil Tool: Supervisor – Armando Soto (432) 553-7979 Hobbs, NM

Monitoring 24 Hour service

Equipment:

Centrifuges – Derrick Brand

Rig Shakers – Brandt Brand

D-watering Unit

Air pumps on location for immediate remediation process

Layout of Close Loop System with bins, centrifuges and shakers attached.

Cuttings and associated liquids will be hauled to a State regulated third party disposal site (CRI or Controlled Recovery, Inc.). The disposal site permit is DFP = #R9166.

2- (250 bbl) tanks to hold fluid

2-CRI bins with track system

2-500 bbl frac tanks with fresh water

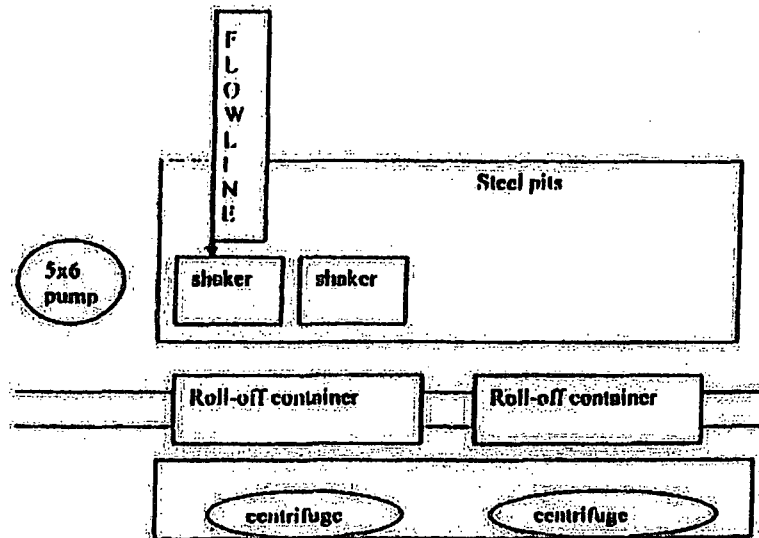
2-500 bbl frac tanks for brine water

Operations:

Closed Loop System equipment will be inspected daily by each tour and any necessary maintenance performed. Any leak in system will be repaired and/or contained immediately. OCD will be notified within 48 hours of any spill. Remediation process will start immediately.

Closure:

During drilling operations all liquids, drilling fluids and cuttings will be hauled off via CRI equipment to DFP #R9166. Close Loop System. Specification of the Closed Loop System is attached.



This will be maintained by 24 hour solids control personnel that stay on location.

TOMMY WILSON



**CLOSED LOOP
SPECIALTY**

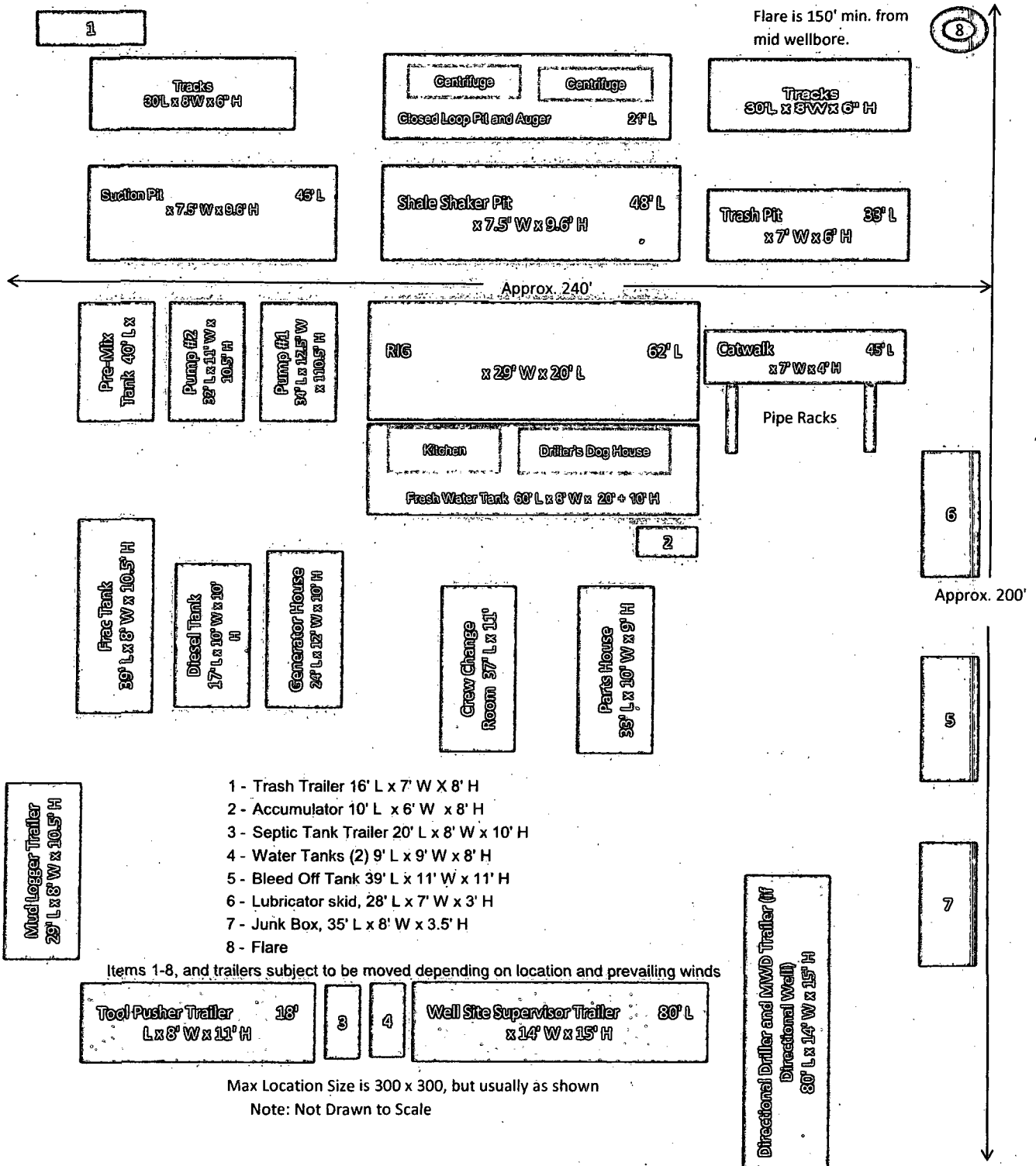
Office: 875.746.1689

Cell: 575.748.6167

Lime Rock Resources II-A, L.P.

Location Layout

(Note: Not to Scale)



- 1 - Trash Trailer 16' L x 7' W x 8' H
- 2 - Accumulator 10' L x 6' W x 8' H
- 3 - Septic Tank Trailer 20' L x 8' W x 10' H
- 4 - Water Tanks (2) 9' L x 9' W x 8' H
- 5 - Bleed Off Tank 39' L x 11' W x 11' H
- 6 - Lubricator skid, 28' L x 7' W x 3' H
- 7 - Junk Box, 35' L x 8' W x 3.5' H
- 8 - Flare

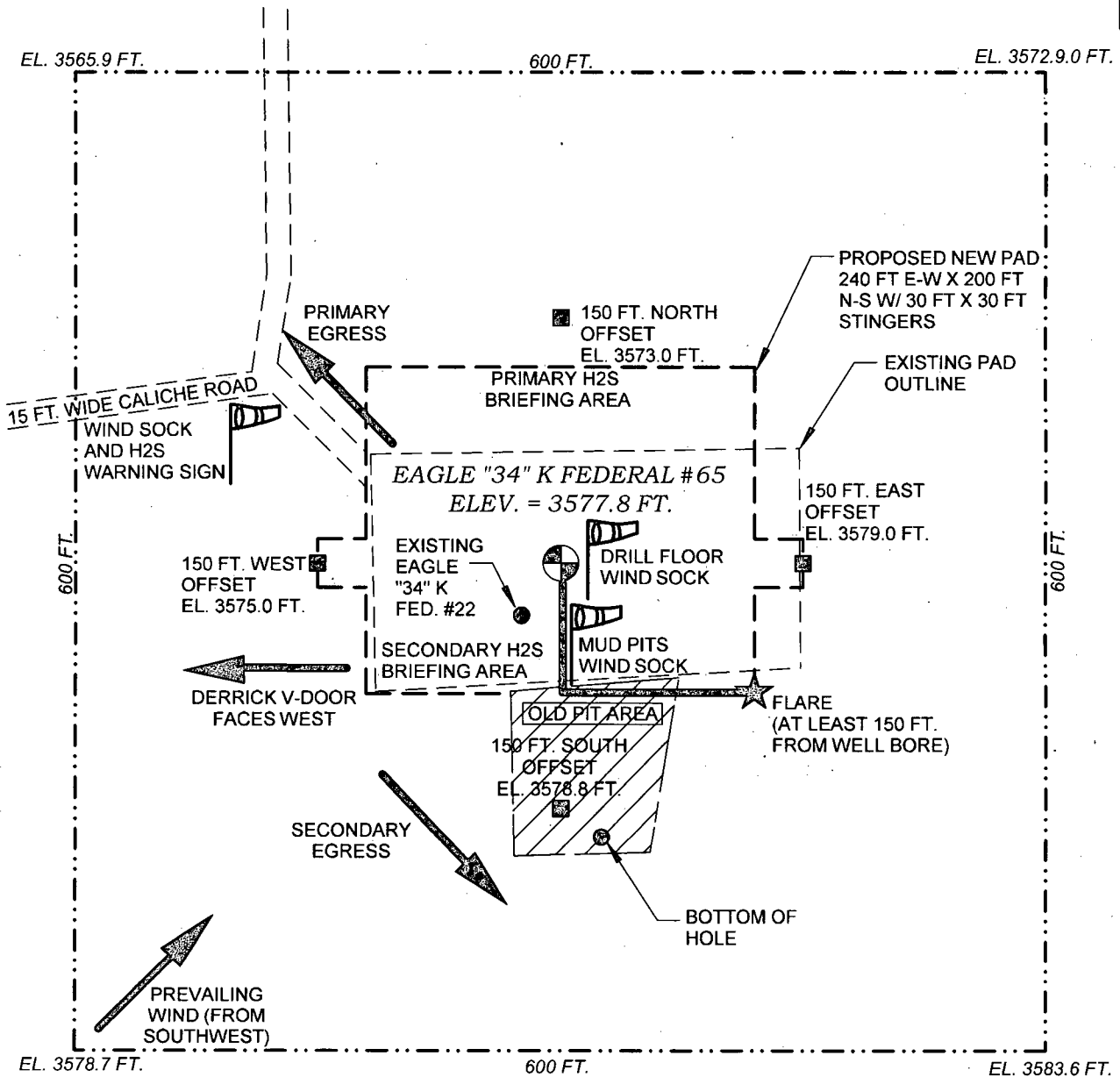
Items 1-8, and trailers subject to be moved depending on location and prevailing winds

SECTION 34, TOWNSHIP 17 SOUTH, RANGE 27 EAST, N.M.P.M.

EDDY COUNTY, STATE OF NEW MEXICO

WELL COORDINATES:
LAT. = 32.7882784° N
LONG. = 104.2670660° W
(NAD 27 - SEE NOTE)

NOTE: THE LATITUDE AND LONGITUDE
COORDINATES ARE SHOWN USING THE
NORTH AMERICAN DATUM OF 1927 (NAD27)
AND ARE IN DECIMAL DEGREE FORMAT.



Directions to Location:

From paved County Road 225 (Empire) and paved County Road 227 (Little Diamond), go West-Southwest on County 227 0.5 miles. Turn right on Caliche Road and go Northwest 0.8 miles. Bend right and go East-Northeast 0.15 miles. Turn right and go Southeast 75 feet to existing pad and location is Southeast 138 feet on existing pad.



12777 Jones Road,
Suite 385,
Houston TX 77070
Tel. 281 890 1818
www.peg-us.com

LEASE
EAGLE "34" K FEDERAL #65
COUNTY / PARISH AND STATE
EDDY COUNTY NEW MEXICO
SURVEY INFORMATION
MADRON SURVEYING, INC.
CARLSBAD, NEW MEXICO
SURVEY NO. 825. 5/3/2012
DRAWING NO. AND REVISION
2013-LR-E34K-65-001
REV. 1

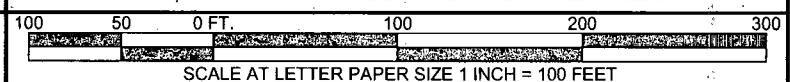
CLIENT

Lime Rock Resources II-A, L.P.

TITLE

EAGLE "34" K FEDERAL #65

LOCATED 1820 FT. FROM THE SOUTH LINE AND 2290 FT. FROM THE
WEST LINE OF SECTION 34, TOWNSHIP 17 SOUTH, RANGE 27
EAST, N.M.P.M. EDDY COUNTY STATE OF NEW MEXICO



Hydrogen Sulfide Drilling Plan Summary

- A. All personnel shall receive proper H₂S training in accordance with Onshore Order 6 III.C.3.a.
- B. Briefing Area: two perpendicular areas will be designated by signs and readily accessible.
- C. Required Emergency Equipment:

- Well control equipment

- a. Flare line 150' from wellhead to be ignited by flare gun.
- b. Choke manifold with a remotely operated choke.
- c. Mud/gas separator

- Protective equipment for essential personnel.

Breathing apparatus:

- a. Rescue Packs (SCBA) — 1 unit shall be placed at each breathing area, 2 shall be stored in the safety trailer.
- b. Work/Escapes packs — 4 packs shall be stored on the rig floor and contain sufficiently long air hoses as to not restrict work activity.
- c. Emergency Escape Packs — 4 packs shall be stored in the doghouse for emergency evacuation.

Auxiliary Rescue Equipment:

- a. Stretcher
- b. Two OSHA full body harness
- c. 100 ft 5/8 inch OSHA approved rope
- d. 1-20# class ABC fire extinguisher

- H₂S detection and monitoring equipment:

The stationary detector with three sensors will be placed in the upper dog house if equipped, set to visually alarm @ 10 ppm and audible @ 14 ppm. Calibrate a minimum of every 30 days or as needed. The sensors will be placed in the following places: Rig floor / Bell nipple / End of flow line or where well bore fluid is being discharged.
(Gas sample tubes will be stored in the safety trailer)

- Visual warning systems.

- a. One color code condition sign will be placed at the entrance to the site reflecting the possible conditions at the site.
- b. A colored condition flag will be on display, reflecting the current condition at the site at the time.
- c. Two wind socks will be placed in strategic locations, visible from all angles.

- Mud program:

The mud program has been designed to minimize the volume of H₂S circulated to surface. The operator will have the necessary mud products to minimize hazards while drilling in H₂S bearing zones.

- Metallurgy:

- a. All drill strings, casings, tubing, wellhead, blowout preventer, drilling spool, kill lines, choke manifold and lines, and valves shall be suitable for H₂S service.
- b. All elastomers used for packing and seals shall be H₂S trim.

■ **Communication:**

Communication will be via two way radio in emergency and company vehicles. Cell phones and land lines where available.

H2S CONTINGENCY DRILLING PLAN EMERGENCY CONTACTS

Company Offices - Lime Rock Houston Office
Answering Service(After Hours)
Artesia, NM Office
Roswell, NM

713-292-9510
713-292-9555
575-748-9724
575-623-8424

KEY PERSONNEL					
Name	Title	Location	Office #	Cell #	Home #
MIKE LOUDERMILK	OPERATIONS MANAGER	HOUSTON	713-292-9526	832-331-7367	SAME AS CELL
SPENCER COX	PRODUCTION ENGINEER	HOUSTON	713-292-9528	432-254-5140	SAME AS CELL
ERIC MCCLUSKY	PRODUCTION ENGINEER	HOUSTON	713-360-5714	405-821-0534	832-491-3079
JERRY SMITH	ASSISTANT PRODUCTION SUPERVISOR	ARTESIA	575-748-9724	505-918-0556	575-746-2478
MICHAEL BARRETT	PRODUCTION SUPERVISOR	ROSWELL	575-623-8424	505-353-2644	575-623-4707
DALE KENNARD	WELL SITE SUPERVISOR	ROTATES ON SITE	NA	575-420-1651	NA
GARY MCCCELLAND	WELL SITE SUPERVISOR	ROTATES ON SITE	NA	903-503-8997	NA
BRAD TATE	WELL SITE SUPERVISOR	ROTATES ON SITE	NA	575-441-1966	NA
DAVE WILLIAMSON	WELL SITE SUPERVISOR	ROTATES ON SITE	NA	575-308-9980	NA

Agency Call List		
City	Agency or Office	Telephone Number
Artesia	Ambulance	911
Artesia	State Police	575-746-2703
Artesia	Sheriff's Office	575-746-9888
Artesia	City Police	575-746-2703
Artesia	Fire Department	575-746-2701
Artesia	Local Emergency Planning Committee	575-746-2122
Artesia	New Mexico OCD District II	575-748-1283
Carlsbad	Ambulance	911
Carlsbad	State Police	575-885-3137
Carlsbad	Sheriff's Office	575-887-7551
Carlsbad	City Police	575-885-2111
Carlsbad	Fire Department	575-885-2111
Carlsbad	Local Emergency Planning Committee	575-887-3798
Carlsbad	US DOI Bureau of Land Management	575-887-6544
State Wide	New Mexico Emergency Response Commission ("NMERC")	505-476-9600
State Wide	NMERC 24 hour Number	505-827-9126
State Wide	New Mexico State Emergency Operations Center	505-476-9635
National	National Emergency Response Center (Washington, D.C.)	800-424-8802

H2S CONTINGENCY DRILLING PLAN EMERGENCY CONTACTS

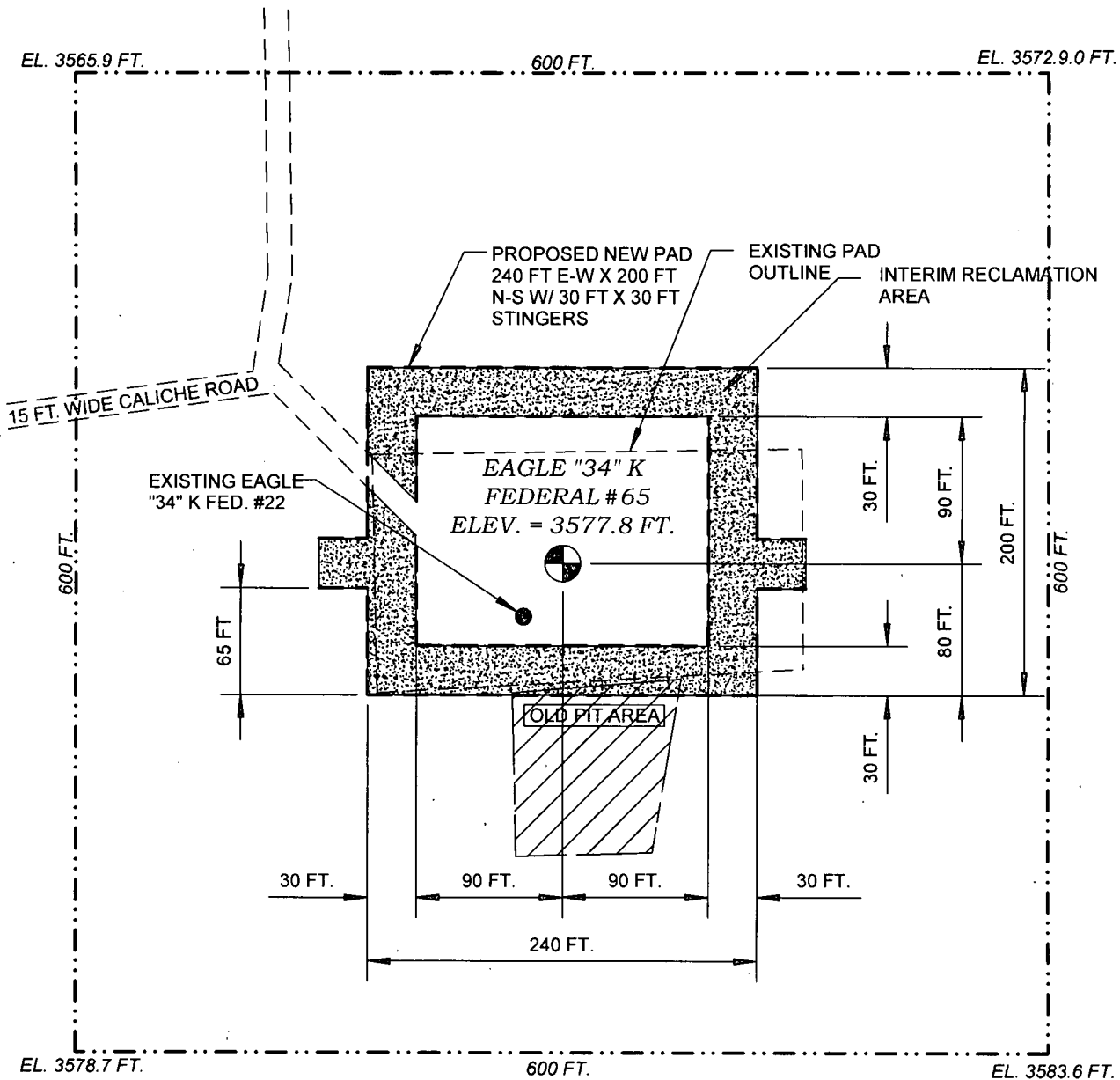
Emergency Services				
Name	Service	Location	Telephone Number	Alternate Number
Boots & Coots International Well Control	Well Control	Houston / Odessa	1-800-256-9688	281-931-8884
Cudd Pressure Control	Well Control & Pumping	Odessa	915-699-0139	915-563-3356
Baker Hughes Inc.	Pumping Service	Artesia, Hobbs and Odessa	575-746-2757	SAME
Total Safety	Safety Equipment and Personnel	Artesia	575-746-2847	SAME
Cutter Oilfield Services	Drilling Systems Equipment	Midland	432-488-6707	SAME
Assurance Fire & Safety	Safety Equipment and Personnel	Artesia	575-396-9702	575-441-2224
Flight for Life	Emergency Helicopter Evacuation	Lubbock	806-743-9911	SAME
Aerocare	Emergency Helicopter Evacuation	Lubbock	806-747-8923	SAME
Med Flight Air Ambulance	Emergency Helicopter Evacuation	Albuquerque	505-842-4433	SAME
Artesia General Hospital	Emergency Medical Care	Artesia	575-748-3333	702 North 13 Street

SECTION 34, TOWNSHIP 17 SOUTH, RANGE 27 EAST, N.M.P.M.

EDDY COUNTY, STATE OF NEW MEXICO

WELL COORDINATES:
LAT. = 32.7882784° N
LONG. = 104.2670660° W
(NAD 27 - SEE NOTE)

NOTE: THE LATITUDE AND LONGITUDE
COORDINATES ARE SHOWN USING THE
NORTH AMERICAN DATUM OF 1927 (NAD27)
AND ARE IN DECIMAL DEGREE FORMAT.



Directions to Location:

From paved County Road 225 (Empire) and paved County Road 227 (Little Diamond), go West-Southwest on County 227 0.5 miles. Turn right on Caliche Road and go Northwest 0.8 miles. Bend right and go East-Northeast 0.15 miles. Turn right and go Southeast 75 feet to existing pad and location is Southeast 138 feet on existing pad.



12777 Jones Road,
Suite 385,
Houston TX 77070
Tel. 281 890 1818
www.peg-us.com

LEASE
EAGLE "34" K FEDERAL #65
COUNTY / PARISH AND STATE
EDDY COUNTY NEW MEXICO
SURVEY INFORMATION
MADRON SURVEYING, INC.
CARLSBAD, NEW MEXICO
SURVEY NO. 825. 5/3/2012
DRAWING NO. AND REVISION
2013-LR-E34K-65-002
REV. 1

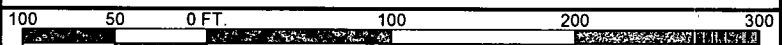
CLIENT

Lime Rock Resources II-A, L.P.

TITLE

EAGLE "34" K FEDERAL #65

LOCATED 1820 FT. FROM THE SOUTH LINE AND 2290 FT. FROM THE
WEST LINE OF SECTION 34, TOWNSHIP 17 SOUTH, RANGE 27
EAST, N.M.P.M. EDDY COUNTY STATE OF NEW MEXICO



SCALE AT LETTER PAPER SIZE 1 INCH = 100 FEET

MULTI POINT SURFACE USE AND OPERATIONS PLAN

LIME ROCK RESOURCES II- A, L.P

Eagle 34 K Federal 65
Unit K - Sec. 34-T17S-R27E
Surface Location: 1820'FSL & 2290'FWL
EDDY County, NM
Lease No.: LC 06784~~7~~⁹

This plan is submitted with the Application for Permit to Drill the above described well. The purpose of this plan is to describe the location of the proposed well, the proposed construction activities and operations plan to be followed in rehabilitating the surface and environmental effects associated with the operations.

1. EXISTING ROADS:

- a. Existing roads are shown on the portion of a BLM topo map showing the location of the proposed well as staked. The well site location is approximately 7.17 road miles Southeast of Artesia, NM. Traveling East of Artesia on U.S. Hwy 82 there will be approximately 9.7 miles of existing highway .2 mile of County Rd. 225 and 227.
- b. Directions: From paved Cr 225 (Empire) and Paved Cr 227 (Little Diamond) go West-Southwest on Cr. 227 0.5 miles, turn right on Caliche Rd and go Northwest 0.8 miles bend right and go East-Northeast 0.15 miles, turn right and go Southeast 75' to existing pad and location is Southeast 136' on existing pad.

2. PLANNED ACCESS ROAD:

- a. Length and Width: Access to the planned location is provided by existing caliche roads. The existing roads are color coded on the Vicinity Map.
- b. Construction: The existing access road will be upgraded, as needed, by grading, and topping with compacted caliche. The surface will be properly drained.
- c. Turnout: None will be required.
- d. Culverts: None.
- e. Cuts and Fills: None required
- f. Gates, Cattle guards: None will be required.
- g. Off Lease right of way: None required.

3. LOCATION OF EXISTING WELLS

- a.** Locations of existing wells are shown on One Mile Radius Map.

4. LOCATION OF EXISTING AND/OR PROPOSED FACILITIES:

- a.** Lime Rock Resources II A, L.P. has production facilities on the lease at this time
- b.** If the well proves to be commercial, the necessary production facilities will be run parallel to the road and other flow lines to the Eagle33/34 Federal Tank Battery located in the same section.

5. LOCATION AND TYPE OF WATER SUPPLY:

- a.** It is planned to drill the proposed well with fresh water that will be obtained from private or commercial sources and will be transported over the existing and proposed access roads.

6. SOURCE OF CONSTRUCTION MATERIALS:

- a.** Caliche for surfacing the proposed access road and well site pad will be obtained from the approved private pit in the SW4/SW4 Sec. 32-T17S-R28E or a closer pit if available. No surface materials will be disturbed except those necessary to for grading and leveling the pad area and access road.

7. METHODS OF HANDLING WASTE DISPOSAL

- a.** Drill cuttings and liquids will be stored in steel tanks of the closed loop mud system during the drilling operating and delivered to CRI, Permit No. R-9166, as needed, and at closure.
- b.** There will be no mud pits to be fenced.
- c.** Water produced during operations will be collected in tanks until hauled to an approved disposal system, or a separate disposal application will be submitted to the BLM for approval.
- d.** Oil produced during operations will be stored in tanks until sold.
- e.** Current laws and regulations pertaining to the disposal of human waste will be complied with.

- f. Trash, waste paper, garbage, and junk will be contained in trash bins to prevent scattering by the wind and will be removed for deposit in an approved sanitary landfill within 30 days after finishing drilling and/or completion operations.

8. ANCILLARY FACILITIES:

- a. None required.

9. WELL SITE LAYOUT:

- a. Refer to the plat that shows the relative location and dimension of the well pad, closed loop system, and major rig components. The pad and pit area has been staked and flagged, 240' X 200' with a 30' X 30' stinger.
- b. Cut & Fill: The location will require approximately a 2' cut on the north with fill to the south.
- c. The surface will be topped with compacted caliche.

10. PLANS FOR RESTORATION OF THE SURFACE:

- a. After completion of drilling and/or completion operations, all equipment and other material not required for operations will be removed. The location will be cleaned of all trash and junk to leave the well site in an aesthetically pleasing a condition as possible.
- b. There will be no unguarded pits containing fluids.
- c. If the proposed well is found commercially viable, the location will be reduced to a square 170' by 180', with exception of road access centered at the well, allowing for environmental reclamation.
- d. If the proposed well is non-productive, all rehabilitation and/or vegetation requirements of the Bureau of Land Management will be complied with and will be accomplished as expeditiously as possible. Mud from the closed system will be disposed of as required.

11. OTHER INFORMATION:

- a. Topography: The proposed well site and access roads are located on an overall 2.0% slope to the south. The location has an elevation of 3578' GL.
- b. Soil: The topsoil at the well site is a tan loamy soil. The soil is part of the Reeves-Gypsum land complex.
- c. Flora and Fauna: The location has a fair grass cover of grama, three-awn fluff grass alkali sacaton along with plant of mesquite, yucca, broomweed, cacti, and miscellaneous

weeds and wildflowers. The wildlife consists of rabbits, coyotes, antelopes, deer, rattlesnakes, lizards, dove, quail, and other wildlife typical of the semi-arid desert land.

- d.** Ponds and Streams: None.
- e.** Residences and Other Structures: None in the immediate vicinity, except producing oil wells surrounding the location of the Eagle 34 K Federal, Well No 65.
- f.** Land Use: Mostly oil production and possible cattle grazing.
- g.** Surface Ownership: The proposed well site and access road is on Federal surface and minerals.
- h.** There is no immediate evidence of an archaeological site on the location of the staked area. Archaeological Survey Consultants, P O Box 225, Roswell, NM 88202, is conducting an archaeological survey and their report will be submitted to the appropriate government agencies.

12. OPERATOR'S REPRESENTATIVE

- a.** The field representative for assuring compliance with the approved use and operations plan is as follows:

Spencer Cox
LIME ROCK RESOURCES II- A, L.P.
Heritage Plaza
1111 Bagby Street, Suite 4600
Houston, TX 77002
Office Phone: 713-292-9528
Cell Phone: 432-254-5140

CERTIFICATION:

I hereby certify that I have inspected the proposed drill site and access route proposed herein; that I am familiar with the conditions which currently exist; that I have knowledge of state and Federal laws applicable to this operation; that the statements made in the APD package are, to the best of my knowledge true and correct; and that the work associated with the operation proposed herein will be performed in the conformity with this APD package and the terms and conditions which it is approved. I also certify that I, or the company I represent, am/is responsible for the operations conducted under this application. These statements are subject to the provisions of 18U.S.C. 1001 for the filing of a false statement.

Executed this 4/5/2013

Lisa Barfield

Lisa Barfield

POA Agent for Lime Rock Resources IIA, L.P.

12777 Jones Rd., Ste 385

Houston, TX 77070

281-890-1818 (office)

PECOS DISTRICT CONDITIONS OF APPROVAL

OPERATOR'S NAME:	LIME ROCK RESOURCES II-A
LEASE NO.:	LC 067849
WELL NAME & NO.:	65-EAGLE 34 K FEDERAL
SURFACE HOLE FOOTAGE:	1820' FSL & 2290' FWL
BOTTOM HOLE FOOTAGE:	1650' FSL & 2310' FWL
LOCATION:	Section 34, T. 17 S., R 27 E., NMPM
COUNTY:	Eddy County, New Mexico

TABLE OF CONTENTS

Standard Conditions of Approval (COA) apply to this APD. If any deviations to these standards exist or special COAs are required, the section with the deviation or requirement will be checked below.

- ☐ **General Provisions**
- ☐ **Permit Expiration**
- ☐ **Archaeology, Paleontology, and Historical Sites**
- ☐ **Noxious Weeds**
- ☒ **Special Requirements**
 - Cave/Karst**
- ☐ **Construction**
 - Notification
 - Topsoil
 - Closed Loop System
 - Federal Mineral Material Pits
 - Well Pads
 - Roads
- ☐ **Road Section Diagram**
- ☒ **Drilling**
 - H2S requirements
 - High Cave Karst
 - Logging Requirements
 - Waste Material and Fluids
- ☒ **Production (Post Drilling)**
 - Well Structures & Facilities
 - Pipelines
- ☐ **Interim Reclamation**
- ☐ **Final Abandonment & Reclamation**

I. GENERAL PROVISIONS

The approval of the Application For Permit To Drill (APD) is in compliance with all applicable laws and regulations: 43 Code of Federal Regulations 3160, the lease terms, Onshore Oil and Gas Orders, Notices To Lessees, New Mexico Oil Conservation Division (NMOCD) Rules, National Historical Preservation Act As Amended, and instructions and orders of the Authorized Officer. Any request for a variance shall be submitted to the Authorized Officer on Form 3160-5, Sundry Notices and Report on Wells.

II. PERMIT EXPIRATION

If the permit terminates prior to drilling and drilling cannot be commenced within 60 days after expiration, an operator is required to submit Form 3160-5, Sundry Notices and Reports on Wells, requesting surface reclamation requirements for any surface disturbance. However, if the operator will be able to initiate drilling within 60 days after the expiration of the permit, the operator must have set the conductor pipe in order to allow for an extension of 60 days beyond the expiration date of the APD. (Filing of a Sundry Notice is required for this 60 day extension.)

III. ARCHAEOLOGICAL, PALEONTOLOGY & HISTORICAL SITES

Any cultural and/or paleontological resource discovered by the operator or by any person working on the operator's behalf shall immediately report such findings to the Authorized Officer. The operator is fully accountable for the actions of their contractors and subcontractors. The operator shall suspend all operations in the immediate area of such discovery until written authorization to proceed is issued by the Authorized Officer. An evaluation of the discovery shall be made by the Authorized Officer to determine the appropriate actions that shall be required to prevent the loss of significant cultural or scientific values of the discovery. The operator shall be held responsible for the cost of the proper mitigation measures that the Authorized Officer assesses after consultation with the operator on the evaluation and decisions of the discovery. Any unauthorized collection or disturbance of cultural or paleontological resources may result in a shutdown order by the Authorized Officer.

IV. NOXIOUS WEEDS

The operator shall be held responsible if noxious weeds become established within the areas of operations. Weed control shall be required on the disturbed land where noxious weeds exist, which includes the roads, pads, associated pipeline corridor, and adjacent land affected by the establishment of weeds due to this action. The operator shall consult with the Authorized Officer for acceptable weed control methods, which include following EPA and BLM requirements and policies.

V. SPECIAL REQUIREMENT(S)

Cave and Karst

** Depending on location, additional Drilling, Casing, and Cementing procedures may be required by engineering to protect critical karst groundwater recharge areas.

Cave/Karst Surface Mitigation

The following stipulations will be applied to minimize impacts during construction, drilling and production.

Construction:

In the advent that any underground voids are opened up during construction activities, construction activities will be halted and the BLM will be notified immediately.

No Blasting:

No blasting will be utilized for pad construction. The pad will be constructed and leveled by adding the necessary fill and caliche.

Pad Berming:

The pad will be bermed to prevent oil, salt, and other chemical contaminants from leaving the pad. All sides will be bermed.

Tank Battery Liners and Berms:

Tank battery locations will be lined and bermed. A 20 mil permanent liner will be installed with a 4 oz. felt backing to prevent tears or punctures. Tank battery berms must be large enough to contain 1 ½ times the content of the largest tank.

Leak Detection System:

A method of detecting leaks is required. The method could incorporate gauges to measure loss, siting valves and lines so they can be visually inspected, or installing electronic sensors to alarm when a leak is present. Leak detection plan will be submitted to BLM for approval.

Automatic Shut-off Systems:

Automatic shut off, check valves, or similar systems will be installed for pipelines and tanks to minimize the effects of catastrophic line failures used in production or drilling.

Cave/Karst Subsurface Mitigation

The following stipulations will be applied to protect cave/karst and ground water concerns:

Rotary Drilling with Fresh Water:

Fresh water will be used as a circulating medium in zones where caves or karst features are expected. SEE ALSO: Drilling COAs for this well.

Directional Drilling:

Kick off for directional drilling will occur at least 100 feet below the bottom of the cave occurrence zone. SEE ALSO: Drilling COAs for this well.

Lost Circulation:

ALL lost circulation zones from the surface to the base of the cave occurrence zone will be logged and reported in the drilling report.

Regardless of the type of drilling machinery used, if a void of four feet or more and circulation losses greater than 70 percent occur simultaneously while drilling in any cave-bearing zone, the BLM will be notified immediately by the operator. The BLM will assess the situation and work with the operator on corrective actions to resolve the problem.

Abandonment Cementing:

Upon well abandonment in high cave karst areas additional plugging conditions of approval may be required. The BLM will assess the situation and work with the operator to ensure proper plugging of the wellbore.

Pressure Testing:

Annual pressure monitoring will be performed by the operator on all casing annuli and reported in a sundry notice. If the test results indicated a casing failure has occurred, remedial action will be undertaken to correct the problem to the BLM's approval.

VI. CONSTRUCTION

A. NOTIFICATION

The BLM shall administer compliance and monitor construction of the access road and well pad. Notify the Carlsbad Field Office at (575) 234-5909 at least 3 working days prior to commencing construction of the access road and/or well pad.

When construction operations are being conducted on this well, the operator shall have the approved APD and Conditions of Approval (COA) on the well site and they shall be made available upon request by the Authorized Officer.

B. TOPSOIL

The operator shall stockpile the topsoil in a low profile manner in order to prevent wind/water erosion of the topsoil. The topsoil to be stripped is approximately 6 inches in depth. The topsoil will be used for interim and final reclamation.

C. CLOSED LOOP SYSTEM

Tanks are required for drilling operations: No Pits.

The operator shall properly dispose of drilling contents at an authorized disposal site.

D. FEDERAL MINERAL MATERIALS PIT

Payment shall be made to the BLM prior to removal of any federal mineral materials. Call the Carlsbad Field Office at (575) 234-5972.

E. WELL PAD SURFACING

Surfacing of the well pad is not required.

If the operator elects to surface the well pad, the surfacing material may be required to be removed at the time of reclamation.

The well pad shall be constructed in a manner which creates the smallest possible surface disturbance, consistent with safety and operational needs.

F. EXCLOSURE FENCING (CELLARS & PITS)

Exclosure Fencing

The operator will install and maintain exclosure fencing for all open well cellars to prevent access to public, livestock, and large forms of wildlife before and after drilling operations until the pit is free of fluids and the operator initiates backfilling. (For

examples of enclosure fencing design, refer to BLM's Oil and Gas Gold Book, Enclosure Fence Illustrations, Figure 1, Page 18.)

G. ON LEASE ACCESS ROADS

Road Width

The access road shall have a driving surface that creates the smallest possible surface disturbance and does not exceed fourteen (14) feet in width. The maximum width of surface disturbance, when constructing the access road, shall not exceed twenty-five (25) feet.

Surfacing

Surfacing material is not required on the new access road driving surface. If the operator elects to surface the new access road or pad, the surfacing material may be required to be removed at the time of reclamation.

Where possible, no improvements should be made on the unsurfaced access road other than to remove vegetation as necessary, road irregularities, safety issues, or to fill low areas that may sustain standing water.

The Authorized Officer reserves the right to require surfacing of any portion of the access road at any time deemed necessary. Surfacing may be required in the event the road deteriorates, erodes, road traffic increases, or it is determined to be beneficial for future field development. The surfacing depth and type of material will be determined at the time of notification.

Crowning

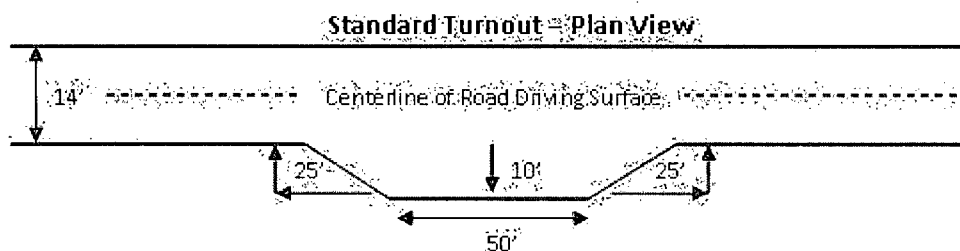
Crowning shall be done on the access road driving surface. The road crown shall have a grade of approximately 2% (i.e., a 1" crown on a 14' wide road). The road shall conform to Figure 1; cross section and plans for typical road construction.

Ditching

Ditching shall be required on both sides of the road.

Turnouts

Vehicle turnouts shall be constructed on the road. Turnouts shall be intervisible with interval spacing distance less than 1000 feet. Turnouts shall be constructed on all blind curves. Turnouts shall conform to the following diagram:

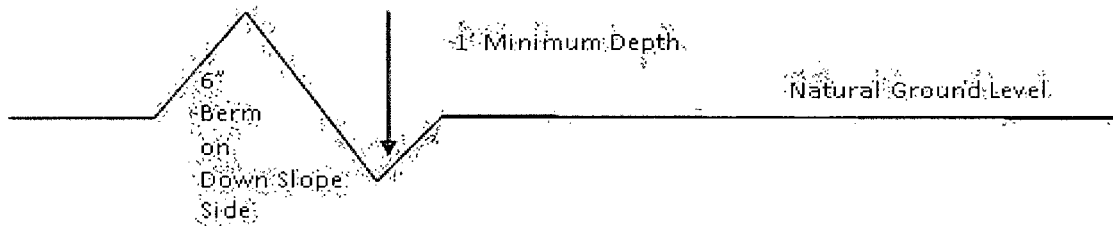


Drainage

Drainage control systems shall be constructed on the entire length of road (e.g. ditches, sidehill outslowing and insloping, lead-off ditches, culvert installation, and low water crossings).

A typical lead-off ditch has a minimum depth of 1 foot below and a berm of 6 inches above natural ground level. The berm shall be on the down-slope side of the lead-off ditch.

Cross Section of a Typical Lead-off Ditch



All lead-off ditches shall be graded to drain water with a 1 percent minimum to 3 percent maximum ditch slope. The spacing interval are variable for lead-off ditches and shall be determined according to the formula for spacing intervals of lead-off ditches, but may be amended depending upon existing soil types and centerline road slope (in %);

Formula for Spacing Interval of Lead-off Ditches

Example - On a 4% road slope that is 400 feet long, the water flow shall drain water into a lead-off ditch. Spacing interval shall be determined by the following formula:

$$400 \text{ foot road with } 4\% \text{ road slope: } \frac{400'}{4\%} + 100' = 200' \text{ lead-off ditch interval}$$

Culvert Installations

Appropriately sized culvert(s) shall be installed at the deep waterway channel flow crossing.

Cattleguards

An appropriately sized cattleguard(s) sufficient to carry out the project shall be installed and maintained at fence crossing(s).

Any existing cattleguard(s) on the access road shall be repaired or replaced if they are damaged or have deteriorated beyond practical use. The operator shall be responsible for the condition of the existing cattleguard(s) that are in place and are utilized during lease operations.

A gate shall be constructed and fastened securely to H-braces.

Fence Requirement

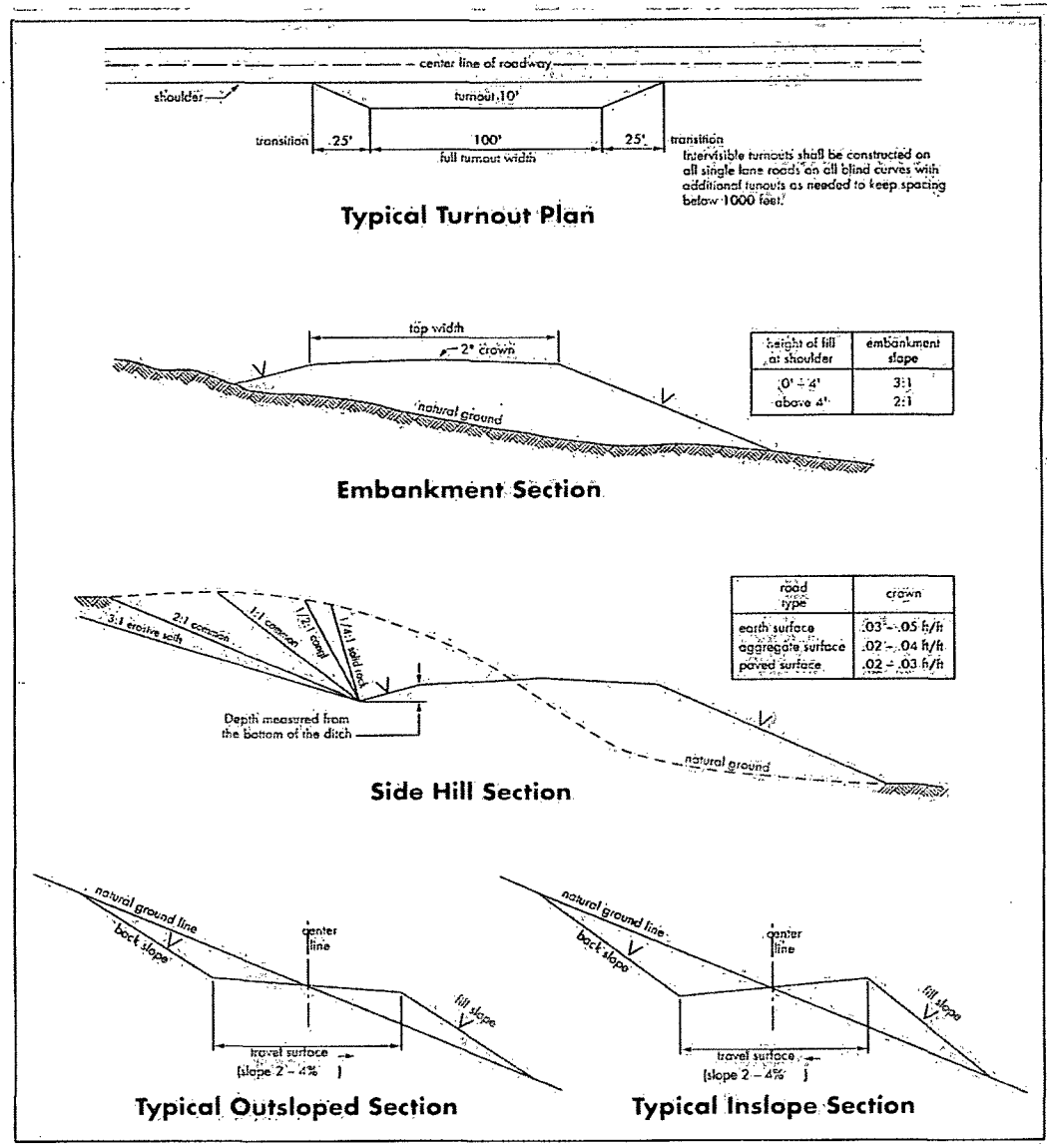
Where entry is required across a fence line, the fence shall be braced and tied off on both sides of the passageway prior to cutting.

The operator shall notify the private surface landowner or the grazing allotment holder prior to crossing any fence(s).

Public Access

Public access on this road shall not be restricted by the operator without specific written approval granted by the Authorized Officer.

Figure 1 – Cross Sections and Plans For Typical Road Sections



VII. DRILLING

A. DRILLING OPERATIONS REQUIREMENTS

The BLM is to be notified in advance for a representative to witness:

- a. Spudding well (minimum of 24 hours)
- b. Setting and/or Cementing of all casing strings (minimum of 4 hours)
- c. BOPE tests (minimum of 4 hours)

☒ **Eddy County**

Call the Carlsbad Field Office, 620 East Greene St., Carlsbad, NM 88220,
(575) 361-2822

1. A Hydrogen Sulfide (H₂S) Drilling Plan shall be activated 500 feet prior to drilling into the **Queen** formation. **As a result, the Hydrogen Sulfide area must meet Onshore Order 6 requirements, which includes equipment and personnel/public protection items. If Hydrogen Sulfide is encountered, please provide measured values and formations to the BLM.**
2. Unless the production casing has been run and cemented or the well has been properly plugged, the drilling rig shall not be removed from over the hole without prior approval. **If the drilling rig is removed without approval – an Incident of Non-Compliance will be written and will be a “Major” violation.**
3. **The record of the drilling rate along with the GR/N well log run from TD to surface shall be submitted to the BLM office as well as all other logs run on the borehole 30 days from completion. If available, a digital copy of the logs is to be submitted in addition to the paper copies. The Rustler top and top and bottom of Salt are to be recorded on the Completion Report.**

B. CASING

Changes to the approved APD casing program need prior approval if the items substituted are of lesser grade or different casing size. The Operator can exchange the components of the proposal with that of superior strength (i.e. changing from J-55 to N-80, or from 36# to 40#). Changes to the approved cement program need prior approval if the altered cement plan has less volume or strength or if the changes are substantial (i.e. Multistage tool, ECP, etc.).

Centralizers required on surface casing per Onshore Order 2.III.B.1.f.

Wait on cement (WOC) time prior to drilling out for a primary cement job will be a minimum 18 hours for a water basin, 24 hours in the potash area, or 500 pounds compressive strength, whichever is greater for all casing strings. DURING THIS WOC TIME, NO DRILL PIPE, ETC. SHALL BE RUN IN THE HOLE. Provide compressive strengths including hours to reach required 500 pounds compressive strength prior to cementing each casing string. See individual casing strings for details regarding lead cement slurry requirements.

No pea gravel permitted for remedial or fall back remedial without prior authorization from the BLM engineer.

HIGH CAVE/KARST – OPERATOR HAS PROPOSED A CONTINGENCY CASING IF LOST CIRCULATION OCCURS WHILE DRILLING THE SURFACE HOLE. IF LOST CIRCULATION OCCURS WHILE DRILLING THE 7-7/8” HOLE, THE CEMENT PROGRAM FOR THE 5-1/2” CASING WILL NEED TO BE MODIFIED AND THE BLM IS TO BE CONTACTED PRIOR TO RUNNING THE CASING. A MINIMUM OF TWO CASING STRINGS CEMENTED TO SURFACE IS REQUIRED IN HIGH CAVE/KARST AREAS. THE CEMENT MUST BE IN A SOLID SHEATH THEREFORE, ONE INCH OPERATIONS WILL NOT BE PERMITTED. A DV TOOL WILL BE REQUIRED

There is a potential for shallow oil production within the Yates and Seven Rivers Formations.

Possibility for water and brine flows in the Salado and Artesia Groups.

Possible lost circulation in the Grayburg and San Andres formations.

Contingency Surface Casing Plan:

1. The 13-3/8 inch contingency surface casing shall be set at approximately 375 feet and cemented to the surface.
 - a. If cement does not circulate to the surface, the appropriate BLM office shall be notified and a temperature survey utilizing an electronic type temperature survey with surface log readout will be used or a cement bond log shall be run to verify the top of the cement. Temperature survey will be run a minimum of six hours after pumping cement and ideally between 8-10 hours after completing the cement job.
 - b. Wait on cement (WOC) time for a primary cement job is to include the lead cement slurry.
 - c. Wait on cement (WOC) time for a remedial job will be a minimum of 4 hours after bringing cement to surface or 500 pounds compressive strength, whichever is greater.

- d. If cement falls back, remedial cementing will be done prior to drilling out that string.

Casing Plan without Contingency:

- 2. The **8-5/8** inch surface casing shall be set at approximately 400 feet and cemented to the surface.
 - a. If cement does not circulate to the surface, the appropriate BLM office shall be notified and a temperature survey utilizing an electronic type temperature survey with surface log readout will be used or a cement bond log shall be run to verify the top of the cement. Temperature survey will be run a minimum of six hours after pumping cement and ideally between 8-10 hours after completing the cement job.
 - b. Wait on cement (WOC) time for a primary cement job is to include the lead cement slurry.**
 - c. Wait on cement (WOC) time for a remedial job will be a minimum of 4 hours after bringing cement to surface or 500 pounds compressive strength, whichever is greater.
 - d. If cement falls back, remedial cementing will be done prior to drilling out that string.
- 3. The minimum required fill of cement behind the **5-1/2** inch production casing is:
 - ☒ Cement to surface. If cement does not circulate, contact the appropriate BLM office.
- 4. If hardband drill pipe is rotated inside casing, returns will be monitored for metal. If metal is found in samples, drill pipe will be pulled and rubber protectors which have a larger diameter than the tool joints of the drill pipe will be installed prior to continuing drilling operations.

C. PRESSURE CONTROL

- 1. All blowout preventer (BOP) and related equipment (BOPE) shall comply with well control requirements as described in Onshore Oil and Gas Order No. 2 and API RP 53 Sec. 17.
- 2. Minimum working pressure of the blowout preventer (BOP) and related equipment (BOPE) required for drilling below the surface casing shoe shall be **2000 (2M)** psi. Operator is approved to test against the casing for the contingency plan.

3. The appropriate BLM office shall be notified a minimum of 4 hours in advance for a representative to witness the tests.
 - a. In a water basin, for all casing strings utilizing slips, these are to be set as soon as the crew and rig are ready and any fallback cement remediation has been done. The casing cut-off and BOP installation can be initiated four hours after installing the slips, which will be approximately six hours after bumping the plug. For those casing strings not using slips, the minimum wait time before cut-off is eight hours after bumping the plug. BOP/BOPE testing can begin after cut-off or once cement reaches 500 psi compressive strength (including lead when specified), whichever is greater. However, if the float does not hold, cut-off cannot be initiated until cement reaches 500 psi compressive strength (including lead when specified).
 - b. The tests shall be done by an independent service company utilizing a test plug **not a cup or J-packer**.
 - c. The test shall be run on a 5000 psi chart for a 2-3M BOP/BOP, on a 10000 psi chart for a 5M BOP/BOPE and on a 15000 psi chart for a 10M BOP/BOPE. If a linear chart is used, it shall be a one hour chart. A circular chart shall have a maximum 2 hour clock.
 - d. The results of the test shall be reported to the appropriate BLM office.
 - e. All tests are required to be recorded on a calibrated test chart. **A copy of the BOP/BOPE test chart and a copy of independent service company test will be submitted to the appropriate BLM office.**
 - f. The BOP/BOPE test shall include a low pressure test from 250 to 300 psi. The test will be held for a minimum of 10 minutes if test is done with a test plug and 30 minutes without a test plug. This test shall be performed prior to the test at full stack pressure

D. DRILL STEM TEST

If drill stem tests are performed, Onshore Order 2.III.D shall be followed.

E. WASTE MATERIAL AND FLUIDS

All waste (i.e. drilling fluids, trash, salts, chemicals, sewage, gray water, etc.) created as a result of drilling operations and completion operations shall be safely contained and disposed of properly at a waste disposal facility. No waste material or fluid shall be disposed of on the well location or surrounding area.

Porto-johns and trash containers will be on-location during fracturing operations or any other crew-intensive operations.

CRW 060313

VIII. PRODUCTION (POST DRILLING)

A. WELL STRUCTURES & FACILITIES

Placement of Production Facilities

Production facilities should be placed on the well pad to allow for maximum interim recontouring and revegetation of the well location.

Exclosure Netting (Open-top Tanks)

Immediately following active drilling or completion operations, the operator will take actions necessary to prevent wildlife and livestock access, including avian wildlife, to all open-topped tanks that contain or have the potential to contain salinity sufficient to cause harm to wildlife or livestock, hydrocarbons, or Resource Conservation and Recovery Act of 1976-exempt hazardous substances. At a minimum, the operator will net, screen, or cover open-topped tanks to exclude wildlife and livestock and prevent mortality. If the operator uses netting, the operator will cover and secure the open portion of the tank to prevent wildlife entry. The operator will net, screen, or cover the tanks until the operator removes the tanks from the location or the tanks no longer contain substances that could be harmful to wildlife or livestock. Use a maximum netting mesh size of 1 ½ inches. The netting must not be in contact with fluids and must not have holes or gaps.

Chemical and Fuel Secondary Containment and Exclosure Screening

The operator will prevent all hazardous, poisonous, flammable, and toxic substances from coming into contact with soil and water. At a minimum, the operator will install and maintain an impervious secondary containment system for any tank or barrel containing hazardous, poisonous, flammable, or toxic substances sufficient to contain the contents of the tank or barrel and any drips, leaks, and anticipated precipitation. The operator will dispose of fluids within the containment system that do not meet applicable state or U. S. Environmental Protection Agency livestock water standards in accordance with state law; the operator must not drain the fluids to the soil or ground. The operator will design, construct, and maintain all secondary containment systems to prevent wildlife and livestock exposure to harmful substances. At a minimum, the operator will install effective wildlife and livestock exclosure systems such as fencing, netting, expanded metal mesh, lids, and grate covers. Use a maximum netting mesh size of 1 ½ inches.

Open-Vent Exhaust Stack Exclosures

The operator will construct, modify, equip, and maintain all open-vent exhaust stacks on production equipment to prevent birds and bats from entering, and to discourage perching, roosting, and nesting. (*Recommended exclosure structures on open-vent exhaust stacks are in the shape of a cone.*) Production equipment includes, but may not be limited to, tanks, heater-treaters, separators, dehydrators, flare stacks, in-line units, and compressor mufflers.

Containment Structures

Proposed production facilities such as storage tanks and other vessels will have a secondary containment structure that is constructed to hold the capacity of 1.5 times the

largest tank, plus freeboard to account for precipitation, unless more stringent protective requirements are deemed necessary.

Painting Requirement

All above-ground structures including meter housing that are not subject to safety requirements shall be painted a flat non-reflective paint color, **Shale Green** from the BLM Standard Environmental Color Chart (CC-001: June 2008).

B. PIPELINES

1. The holder shall indemnify the United States against any liability for damage to life or property arising from the occupancy or use of public lands under this grant.
2. The holder shall comply with all applicable Federal laws and regulations existing or hereafter enacted or promulgated. In any event, the holder shall comply with the Toxic Substances Control Act of 1976 as amended, 15 USC 2601 et seq. (1982) with regards to any toxic substances that are used, generated by or stored on the right-of-way or on facilities authorized under this right-of-way grant. (See 40 CFR, Part 702-799 and especially, provisions on polychlorinated biphenyls, 40 CFR 761.1-761.193.) Additionally, any release of toxic substances (leaks, spills, etc.) in excess of the reportable quantity established by 40 CFR, Part 117 shall be reported as required by the Comprehensive Environmental Response, Compensation, and Liability Act, section 102b. A copy of any report required or requested by any Federal agency or State government as a result of a reportable release or spill of any toxic substances shall be furnished to the authorized officer concurrent with the filing of the reports to the involved Federal agency or State government.
3. The holder agrees to indemnify the United States against any liability arising from the release of any hazardous substance or hazardous waste (as these terms are defined in the Comprehensive Environmental Response, Compensation and Liability Act of 1980, 42 U.S.C. 9601, et seq. or the Resource Conservation and Recovery Act, 42 U.S.C. 6901, et seq.) on the Right-of-Way (unless the release or threatened release is wholly unrelated to activity of the Right-of-Way holder's activity on the Right-of-Way), or resulting from the activity of the Right-of-Way holder on the Right-of-Way. This agreement applies without regard to whether a release is caused by the holder, its agent, or unrelated third parties.
4. The holder shall be liable for damage or injury to the United States to the extent provided by 43 CFR Sec. 2883.1-4. The holder shall be held to a standard of strict liability for damage or injury to the United States resulting from pipe rupture, fire, or spills caused or substantially aggravated by any of the following within the right-of-way or permit area:
 - a. Activities of the holder including, but not limited to construction, operation, maintenance, and termination of the facility.
 - b. Activities of other parties including, but not limited to:

- (1) Land clearing.
- (2) Earth-disturbing and earth-moving work.
- (3) Blasting.
- (4) Vandalism and sabotage.

c. Acts of God.

The maximum limitation for such strict liability damages shall not exceed one million dollars (\$1,000,000) for any one event, and any liability in excess of such amount shall be determined by the ordinary rules of negligence of the jurisdiction in which the damage or injury occurred.

This section shall not impose strict liability for damage or injury resulting primarily from an act of war or from the negligent acts or omissions of the United States.

5. If, during any phase of the construction, operation, maintenance, or termination of the pipeline, any oil, salt water, or other pollutant should be discharged from the pipeline system, impacting Federal lands, the control and total removal, disposal, and cleaning up of such oil, salt water, or other pollutant, wherever found, shall be the responsibility of the holder, regardless of fault. Upon failure of the holder to control, dispose of, or clean up such discharge on or affecting Federal lands, or to repair all damages resulting therefrom, on the Federal lands, the Authorized Officer may take such measures as he deems necessary to control and clean up the discharge and restore the area, including, where appropriate, the aquatic environment and fish and wildlife habitats, at the full expense of the holder. Such action by the Authorized Officer shall not relieve the holder of any responsibility as provided herein.

6. All construction and maintenance activity will be confined to the authorized right-of-way width of 20 feet. If the pipeline route follows an existing road or buried pipeline right-of-way, the surface pipeline must be installed no farther than 10 feet from the edge of the road or buried pipeline right-of-way. If existing surface pipelines prevent this distance, the proposed surface pipeline must be installed immediately adjacent to the outer surface pipeline. All construction and maintenance activity will be confined to existing roads or right-of-ways.

7. No blading or clearing of any vegetation will be allowed unless approved in writing by the Authorized Officer.

8. The holder shall install the pipeline on the surface in such a manner that will minimize suspension of the pipeline across low areas in the terrain. In hummocky or dune areas, the pipeline will be "snaked" around hummocks and dunes rather than suspended across these features.

9. The pipeline shall be buried with a minimum of 24 inches under all roads, "two-tracks," and trails. Burial of the pipe will continue for 20 feet on each side of each crossing. The condition of the road, upon completion of construction, shall be returned to at least its former state with no bumps or dips remaining in the road surface.

10. The holder shall minimize disturbance to existing fences and other improvements on public lands. The holder is required to promptly repair improvements to at least their former state. Functional use of these improvements will be maintained at all times. The holder will contact the owner of any improvements prior to disturbing them. When necessary to pass through a fence line, the fence shall be braced on both sides of the passageway prior to cutting of the fence. No permanent gates will be allowed unless approved by the Authorized Officer.

11. In those areas where erosion control structures are required to stabilize soil conditions, the holder will install such structures as are suitable for the specific soil conditions being encountered and which are in accordance with sound resource management practices.

12. Excluding the pipe, all above-ground structures not subject to safety requirement shall be painted by the holder to blend with the natural color of the landscape. The paint used shall be a color which simulates "Standard Environmental Colors" – **Shale Green**, Munsell Soil Color No. 5Y 4/2; designated by the Rocky Mountain Five State Interagency Committee.

13. The pipeline will be identified by signs at the point of origin and completion of the right-of-way and at all road crossings. At a minimum, signs will state the holder's name, BLM serial number, and the product being transported. Signs will be maintained in a legible condition for the life of the pipeline.

14. The holder shall not use the pipeline route as a road for purposes other than routine maintenance as determined necessary by the Authorized Officer in consultation with the holder. The holder will take whatever steps are necessary to ensure that the pipeline route is not used as a roadway.

15. Any cultural and/or paleontological resource (historic or prehistoric site or object) discovered by the holder, or any person working on his behalf, on public or Federal land shall be immediately reported to the authorized officer. Holder shall suspend all operations in the immediate area of such discovery until written authorization to proceed is issued by the authorized officer. An evaluation of the discovery will be made by the authorized officer to determine appropriate cultural or scientific values. The holder will be responsible for the cost of evaluation and any decision as to proper mitigation measures will be made by the authorized officer after consulting with the holder.

16. The operator shall be held responsible if noxious weeds become established within the areas of operations. Weed control shall be required on the disturbed land where noxious weeds exist, which includes the roads, powerline corridor, and adjacent land affected by the establishment of weeds due to this action. The operator shall consult with the Authorized Officer for acceptable weed control methods, which include following EPA and BLM requirements and policies.

17. Surface pipelines must be less than or equal to 4 inches and a working pressure below 125 psi.

IX. INTERIM RECLAMATION

During the life of the development, all disturbed areas not needed for active support of production operations should undergo interim reclamation in order to minimize the environmental impacts of development on other resources and uses.

Within six (6) months of well completion, operators should work with BLM surface management specialists (Jim Amos: 575-234-5909) to devise the best strategies to reduce the size of the location. Interim reclamation should allow for remedial well operations, as well as safe and efficient removal of oil and gas.

During reclamation, the removal of caliche is important to increasing the success of revegetating the site. Removed caliche that is free of contaminants may be used for road repairs, fire walls or for building other roads and locations. In order to operate the well or complete workover operations, it may be necessary to drive, park and operate on restored interim vegetation within the previously disturbed area. Disturbing revegetated areas for production or workover operations will be allowed. If there is significant disturbance and loss of vegetation, the area will need to be revegetated. Communicate with the appropriate BLM office for any exceptions/exemptions if needed.

All disturbed areas after they have been satisfactorily prepared need to be reseeded with the seed mixture provided below.

Upon completion of interim reclamation, the operator shall submit a Sundry Notices and Reports on Wells, Subsequent Report of Reclamation (Form 3160-5).

X. FINAL ABANDONMENT & RECLAMATION

At final abandonment, well locations, production facilities, and access roads must undergo "final" reclamation so that the character and productivity of the land are restored.

Earthwork for final reclamation must be completed within six (6) months of well plugging. All pads, pits, facility locations and roads must be reclaimed to a satisfactory revegetated, safe, and stable condition, unless an agreement is made with the landowner or BLM to keep the road and/or pad intact.

After all disturbed areas have been satisfactorily prepared, these areas need to be revegetated with the seed mixture provided below. Seeding should be accomplished by drilling on the contour whenever practical or by other approved methods. Seeding may need to be repeated until revegetation is successful, as determined by the BLM.

Operators shall contact a BLM surface protection specialist prior to surface abandonment operations for site specific objectives (Jim Amos: 575-234-5909).

Seed Mixture 4, for Gypsum Sites

The holder shall seed all disturbed areas with the seed mixture listed below. The seed mixture shall be planted in the amounts specified in pounds of pure live seed (PLS)* per acre. There shall be no primary or secondary noxious weeds in the seed mixture. Seed will be tested and the viability testing of seed will be done in accordance with State law(s) and within nine (9) months prior to purchase. Commercial seed will be either certified or registered seed. The seed container will be tagged in accordance with State law(s) and available for inspection by the authorized officer.

Seed will be planted using a drill equipped with a depth regulator to ensure proper depth of planting where drilling is possible. The seed mixture will be evenly and uniformly planted over the disturbed area (smaller/heavier seeds have a tendency to drop the bottom of the drill and are planted first). The holder shall take appropriate measures to ensure this does not occur. Where drilling is not possible, seed will be broadcast and the area shall be raked or chained to cover the seed. When broadcasting the seed, the pounds per acre are to be doubled. The seeding will be repeated until a satisfactory stand is established as determined by the authorized officer. Evaluation of growth will not be made before completion of at least one full growing season after seeding.

Species to be planted in pounds of pure live seed* per acre:

<u>Species</u>	<u>lb/acre</u>
Alkali Sacaton (<i>Sporobolus airoides</i>)	1.0
DWS Four-wing saltbush (<i>Atriplex canescens</i>)	5.0
DWS: DeWinged Seed	

*Pounds of pure live seed:

Pounds of seed x percent purity x percent germination = pounds pure live seed