

DISTRICT I
1625 N. French Dr., Hobbs, NM 88240

DISTRICT II
1301 W. Grand Avenue, Artesia, NM 88210

DISTRICT III
1000 Rio Brazos Rd., Aztec, NM 87410

DISTRICT IV
1220 S. St. Francis Dr., Santa Fe, NM 87505

State of New Mexico
Energy, Minerals and Natural Resources Department

OIL CONSERVATION DIVISION
1220 South St. Francis Dr.
Santa Fe, New Mexico 87505

RECEIVED

JUN 13 2013

Form C-102

Revised October 15, 2009

Submit one copy to appropriate
District Office

ALBUQUERQUE
ARTESIA

WELL LOCATION AND ACREAGE DEDICATION PLAT

AMENDED REPORT
"As drilled"

API Number 30-015-40762	Pool Code 96238	Pool Name CORRAL CANYON; BONE SPRING
Property Code 39487	Property Name PLU ROSS RANCH 33 25 30 USA	Well Number 1H
OGRID No. 260737	Operator Name BOPCO, L.P.	Elevation 3197'

Surface Location

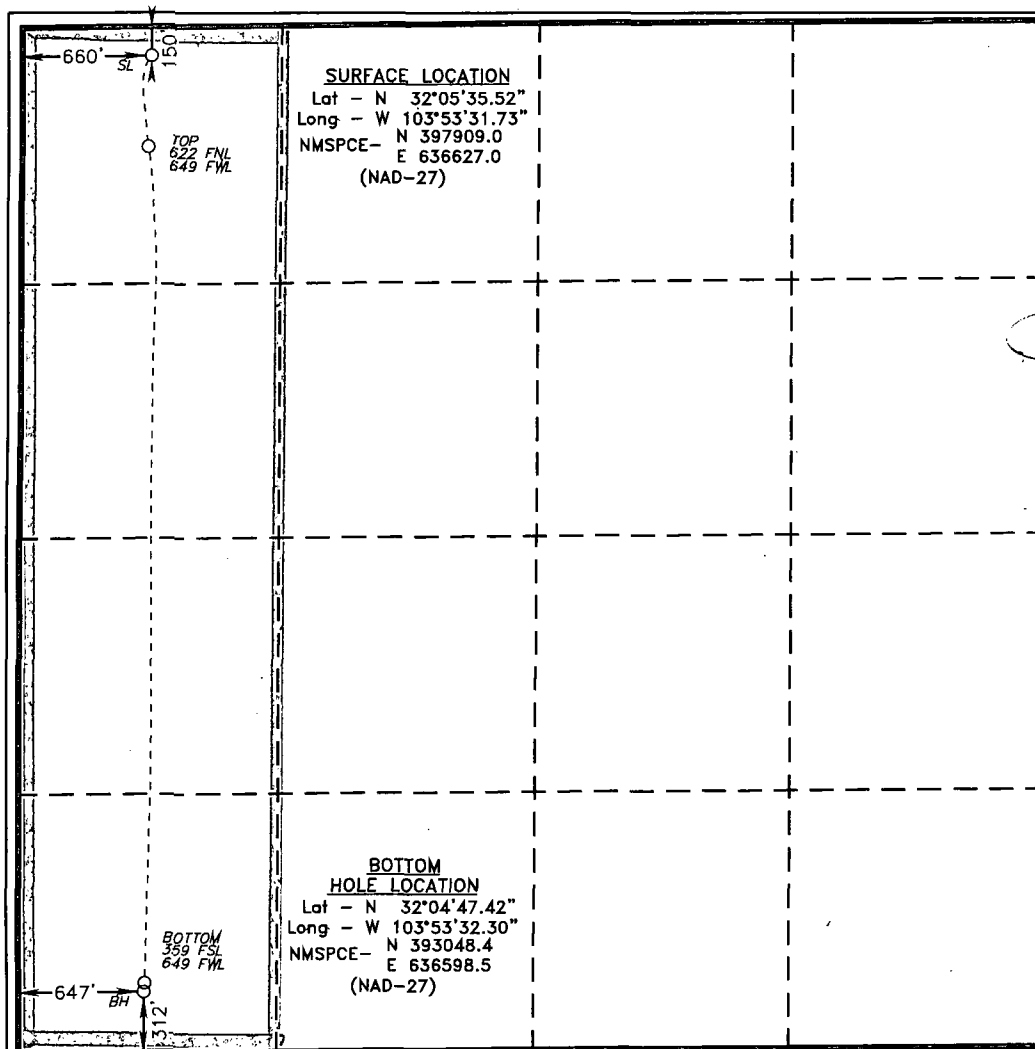
UL or lot No. D	Section 33	Township 25 S	Range 30 E	Lot Idn	Feet from the 150	North/South line NORTH	Feet from the 660	East/West line WEST	County EDDY
--------------------	---------------	------------------	---------------	---------	----------------------	---------------------------	----------------------	------------------------	----------------

Bottom Hole Location If Different From Surface

UL or lot No. M	Section 33	Township 25 S	Range 30 E	Lot Idn	Feet from the 330	North/South line SOUTH	Feet from the 660	East/West line WEST	County EDDY
--------------------	---------------	------------------	---------------	---------	----------------------	---------------------------	----------------------	------------------------	----------------

Dedicated Acres 160	Joint or Infill	Consolidation Code	Order No.
------------------------	-----------------	--------------------	-----------

NO ALLOWABLE WILL BE ASSIGNED TO THIS COMPLETION UNTIL ALL INTERESTS HAVE BEEN CONSOLIDATED
OR A NON-STANDARD UNIT HAS BEEN APPROVED BY THE DIVISION



OPERATOR CERTIFICATION

I hereby certify that the information contained herein is true and complete to the best of my knowledge and belief, and that this organization either owns a working interest or unleased mineral interest in the land including the proposed bottom hole location or has a right to drill this well at this location pursuant to a contract with an owner of such a mineral or working interest, or to a voluntary pooling agreement or a compulsory pooling order heretofore entered by the division.

Signature: *Trace J Cherry* Date: *6-12-13*

Printed Name: *Trace J Cherry*

SURVEYOR CERTIFICATION

I hereby certify that the well location shown on this plat was plotted from field notes of actual surveys made by me or under my supervision, and that the same is true and correct to the best of my belief.

JUNE 25, 2012

Date Surveyed
Signature & Seal of
Professional Surveyor

W.O. No. 22703