

DISTRICT I
1826 N. French Dr., Hobbs, NM 88240

DISTRICT II
1301 W. Grand Avenue, Artesia, NM 88210

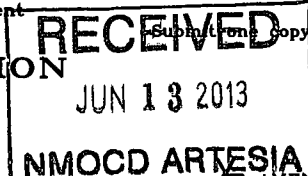
DISTRICT III
1000 Rio Brazos Rd., Aztec, NM 87410

DISTRICT IV
1220 S. St. Francis Dr., Santa Fe, NM 87505

State of New Mexico
Energy, Minerals and Natural Resources Department

Form C-102
Revised July 18, 2010

OIL CONSERVATION DIVISION
1220 South St. Francis Dr.
Santa Fe, New Mexico 87505



Submit one copy to appropriate
District Office

WELL LOCATION AND ACREAGE DEDICATION PLAT

AS AMENDED REPORT
As Drilled

API Number 30-015-40684	Pool Code 13360	Pool Name Corral Canyon; Delaware
Property Code 306402	Property Name POKER LAKE UNIT	Well Number 363H
OGRID No. 260737	Operator Name BOPCO, L.P.	Elevation 3309'

Surface Location

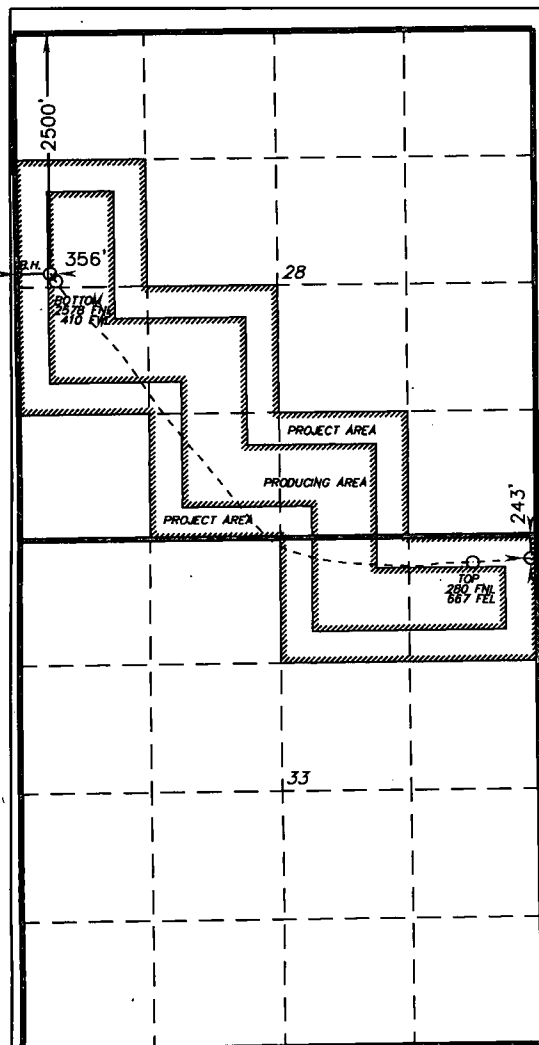
UL or lot No.	Section	Township	Range	Lot Idn	Feet from the	North/South line	Feet from the	East/West line	County
A	33	24 S	30 E		243	NORTH	64	EAST	EDDY

Bottom Hole Location If Different From Surface

UL or lot No.	Section	Township	Range	Lot Idn	Feet from the	North/South line	Feet from the	East/West line	County
E	28	24 S	30 E		2500	NORTH	356	WEST	EDDY

Dedicated Acre	Joint or Infill	Consolidation Code	Order No.
----------------	-----------------	--------------------	-----------

NO ALLOWABLE WILL BE ASSIGNED TO THIS COMPLETION UNTIL ALL INTERESTS HAVE BEEN CONSOLIDATED
OR A NON-STANDARD UNIT HAS BEEN APPROVED BY THE DIVISION



**BOTTOM
HOLE LOCATION**
Lat - N 32°11'20.18"
Long - W 103°53'35.60"
NMSPCE- N 432734.54
E 636152.24
(NAD-27)

**SURFACE LOCATION
DELAWARE PP**
Lat - N 32°10'50.57"
Long - W 103°52'38.21"
NMSPCE- N 429763.167
E 641096.315
(NAD-27)

OPERATOR CERTIFICATION

I hereby certify that the information contained herein is true and complete to the best of my knowledge and belief, and that this organization either owns a working interest or unleased mineral interest in the land including the proposed bottom hole location or has a right to drill this well at this location pursuant to a contract with an owner of such a mineral or working interest, or to a voluntary pooling agreement or a compulsory pooling order heretofore entered by the division.

Signature: *Tracie J Cherry* Date: 06-12-13
Tracie J Cherry

Printed Name: tjcherry@basspet.com

Email Address:

SURVEYOR CERTIFICATION

I hereby certify that the well location shown on this plat was plotted from field notes of actual surveys made by me or under my supervision and that the same is true and correct to the best of my belief.

Date Surveyed: *May 15, 2012*
Signature & Seal of Professional Surveyor: *Gary L. Jones*
W.O. No. 26735

Certificate No. Gary L. Jones 7977

BASIN SURVEYS 26735