

1625 N. French Dr., Hobbs, NM 88240

1301 W. Grand Avenue, Artesia, NM 88210

1000 Rio Brazos Rd., Aztec, NM 87410

1220 S. St. Francis Dr., Santa Fe, NM 87505

State of New Mexico

Energy, Minerals & Natural Resources Department

OIL CONSERVATION DIVISION

1220 South St. Francis Dr.

Santa Fe, NM 87505

Form C-102

Revised October 15, 2009

Submit one copy to appropriate

District Office.

☐ AMENDED REPORT

WELL LOCATION AND ACREAGE DEDICATION PLAT

¹ API Number 30-015-40590	² Pool Code 55510	³ Pool Name Scanlon Draw; Bone Spring
⁴ Property Code 38432	⁵ Property Name AGATE PWU "21"	
⁷ OGRID No. 6137	⁶ Operator Name DEVON ENERGY PRODUCTION COMPANY, L.P.	⁸ Well Number 5H
		⁹ Elevation 3322.1

¹⁰ Surface Location

UL or lot no.	Section	Township	Range	Lot Idn	Feet from the	North/South line	Feet from the	East/West line	County
D	21	19 S	29 E		1250	NORTH	330	WEST	EDDY

" Bottom Hole Location If Different From Surface

UL or lot no.	Section	Township	Range	Lot Idn	Feet from the	North/South line	Feet from the	East/West line	County
A	21	19 S	29 E		990	NORTH	330	EAST	EDDY

¹² Dedicated Acres 160	¹³ Joint or Infill	¹⁴ Consolidation Code	¹⁵ Order No.
--------------------------------------	-------------------------------	----------------------------------	-------------------------

RECEIVED

No allowable will be assigned to this completion until all interests have been consolidated or a non-standard unit has been approved by the division.

RECEIVED

as been approved by
JUN 17 2013

N89°49'41"W 2643.99 FT

S89°58'17"W 2643.35 FT

S00°04'22"W 2642.68 FT

S00°09'24"E 2640.77 FT

NW CORNER SEC. 21 LAT. = 32.6535924°N LONG. = 104.0883657°W NMSP EAST (FT) N = 601594.86 E = 616731.03	N O CORNER SEC. 21 LAT. = 32.6535536°N LONG. = 104.0787751°W NMSP EAST (FT) N = 601586.93 E = 619375.01	NE CORNER SEC. 21 LAT. = 32.6535396°N LONG. = 104.0711551°W NMSP EAST (FT) N = 601588.25 E = 622018.36
---	--	---

330'

BOTTOM OF HOLE

17 OPERATOR CERTIFICATE

I hereby certify that the information contained herein is true and complete to the best of my knowledge and belief, and that this organization either owns a working interest or unleased mineral interest in the land including the proposed bottom hole location or has a right to drill this well at this location pursuant to a contract with an owner of such a mineral or working interest, or to a voluntary pooling agreement or a compulsory pooling order heretofore entered by the division.

Signature
 7/8/13
 Date

Printed Name
 Ryan Delong, Regulatory Specialist

SURFACE LOCATION
 ACATE PWU "21" #5H
 ELEV. = 3322.1'
 LAT. = 32.6501523°N (NAD83)
 LONG. = 104.0873084°W
 NMSP EAST (FT)
 N = 600344.08
 E = 617059.34

BOTTOM OF HOLE
 LAT. = 32.6508202°N
 LONG. = 104.0722848°W
 NMSP EAST (FT)
 N = 600598.08
 E = 621682.72

PP: 1250 FNL & 330 FWL
 Project Area:
 Producing Area:

W O CORNER SEC. 21
 LAT. = 32.6453236°N
 LONG. = 104.0883964°W
 NMSP EAST (FT)
 N = 598952.19
 E = 616727.68

SW CORNER SEC. 21 LAT. = 32.6390699°N LONG. = 104.0883927°W NMSP EAST (FT) N = 596311.43 E = 616734.90	S O CORNER SEC. 21 LAT. = 32.6390356°N LONG. = 104.0798189°W NMSP EAST (FT) N = 596305.14 E = 619374.13	SE CORNER SEC. 21 LAT. = 32.6390370°N LONG. = 104.0712463°W NMSP EAST (FT) N = 596312.05 E = 622012.94
---	--	---

18 SURVEYOR CERTIFICATION

I hereby certify that the well location shown on this plat was plotted from field notes of actual surveys made by me or under my supervision and that the same is true and correct to the best of my belief.

MAY 2, 2012
 Date of Survey

 Signature and Seal of Professional Surveyor
 Certificate Number: 121100016
 NEW MEXICO
 SURVEY NO. 974

S89°51'49"E 2639.24 FT

SW CORNER SEC. 21 LAT. = 32.6390699°N LONG. = 104.0883927°W NMSP EAST (FT) N = 596311.43 E = 616734.90	S O CORNER SEC. 21 LAT. = 32.6390356°N LONG. = 104.0798189°W NMSP EAST (FT) N = 596305.14 E = 619374.13	SE CORNER SEC. 21 LAT. = 32.6390370°N LONG. = 104.0712463°W NMSP EAST (FT) N = 596312.05 E = 622012.94
---	--	---

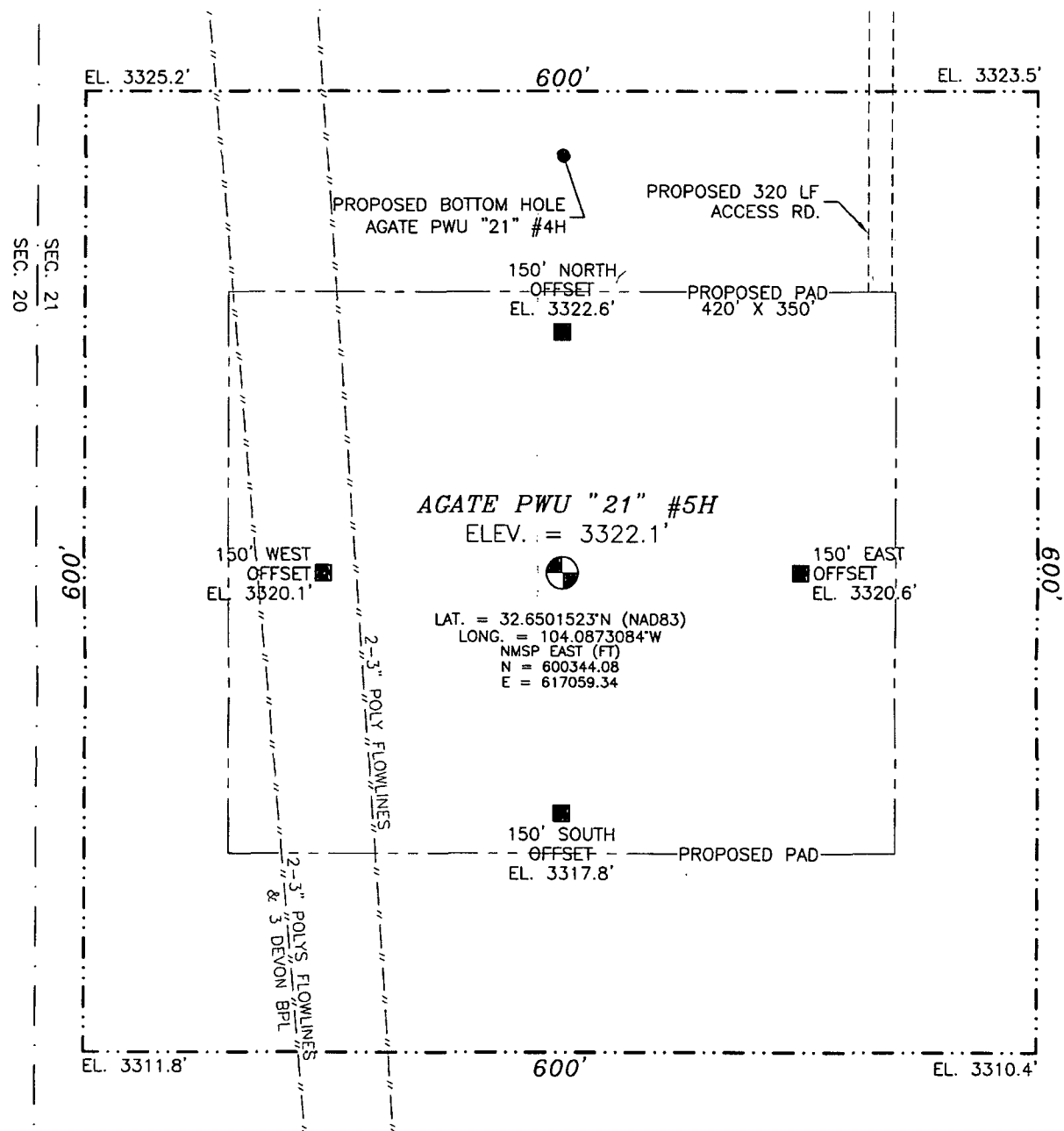
S00°12'38"W 2629.39 FT

S89°51'49"E 2639.24 FT

SW CORNER SEC. 21 LAT. = 32.6390699°N LONG. = 104.0883927°W NMSP EAST (FT) N = 596311.43 E = 616734.90	S O CORNER SEC. 21 LAT. = 32.6390356°N LONG. = 104.0798189°W NMSP EAST (FT) N = 596305.14 E = 619374.13	SE CORNER SEC. 21 LAT. = 32.6390370°N LONG. = 104.0712463°W NMSP EAST (FT) N = 596312.05 E = 622012.94
---	--	---

S00°12'38"W 2629.39 FT

SECTION 21, TOWNSHIP 19 SOUTH, RANGE 29 EAST, N.M.P.M.
EDDY COUNTY, STATE OF NEW MEXICO



LAT. = 32.6501523°N (NAD83)
LONG. = 104.0873084°W
NMSP EAST (FT)
N = 600344.08
E = 617059.34



010 50 100 200

SCALE 1" = 100'

DIRECTIONS TO LOCATION

FROM THE INTERSECTION OF CR 210 (OLD LOCO) AND CR 235 (CURRY COMB) GO NORTHWEST APPROX. 0.3 OF A MILE. GO SOUTH APPROX. 0.25 OF A MILE TO THE AGATE PWU "21" #1H WELL. LOCATION IS 874 FT SOUTH OF WELL HEAD.

DEVON ENERGY PRODUCTION COMPANY, L.P.

AGATE PWU "21" #5H

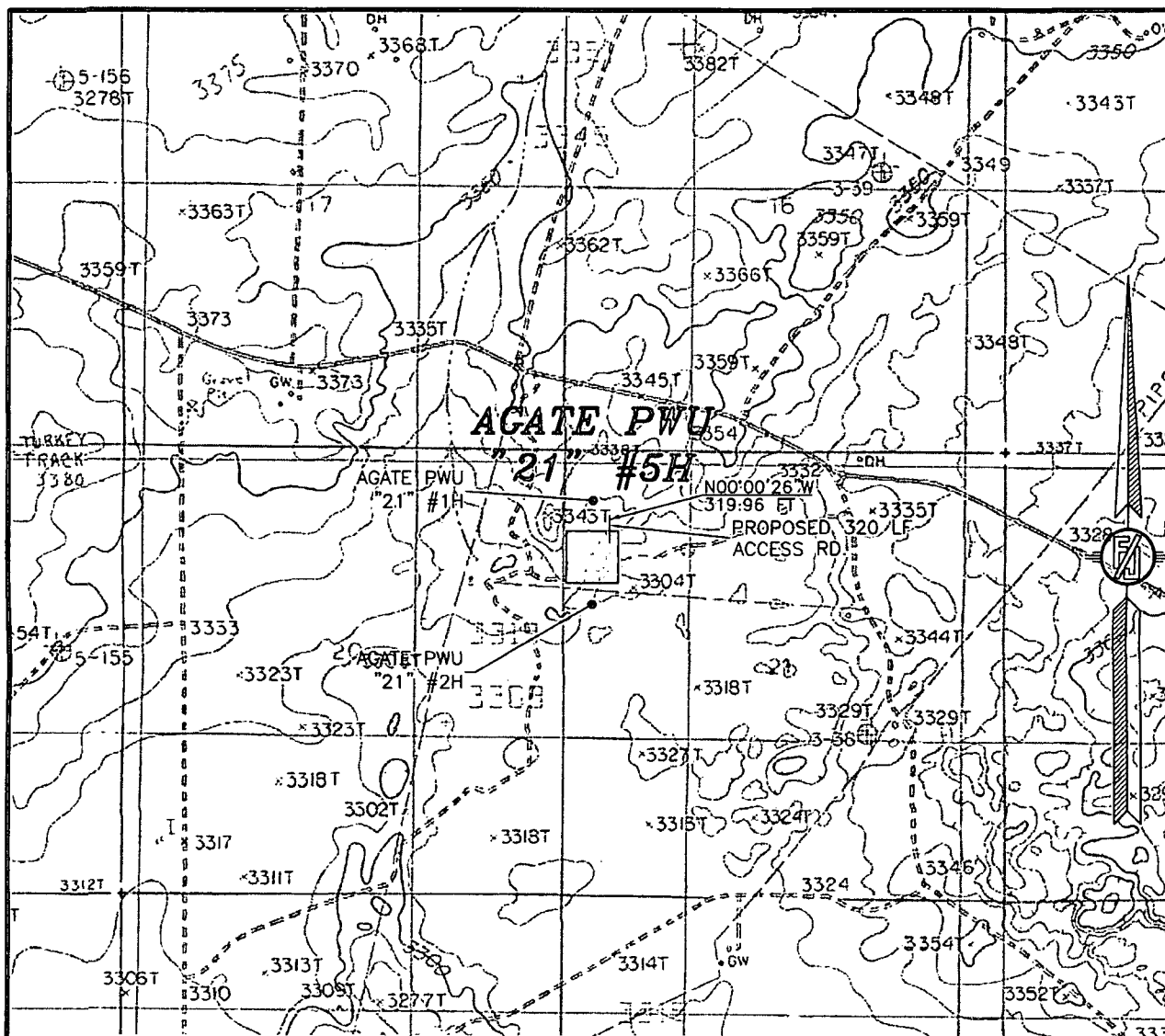
LOCATED 1250 FT. FROM THE NORTH LINE
AND 330 FT. FROM THE WEST LINE OF
SECTION 21, TOWNSHIP 19 SOUTH,
RANGE 29 EAST, N.M.P.M.
EDDY COUNTY, STATE OF NEW MEXICO

MAY 2, 2012

SURVEY NO. 974

MADRON SURVEYING, INC. 301 SOUTH CANAL (575) 234-3341 CARLSBAD, NEW MEXICO

SECTION 21, TOWNSHIP 19 SOUTH, RANGE 29 EAST, N.M.P.M.
 EDDY COUNTY, STATE OF NEW MEXICO
 LOCATION VERIFICATION MAP



USGS QUAD MAP:
 ILLINOIS CAMP NE

NOT TO SCALE

DEVON ENERGY PRODUCTION COMPANY, L.P.

AGATE PWU "21" #5H

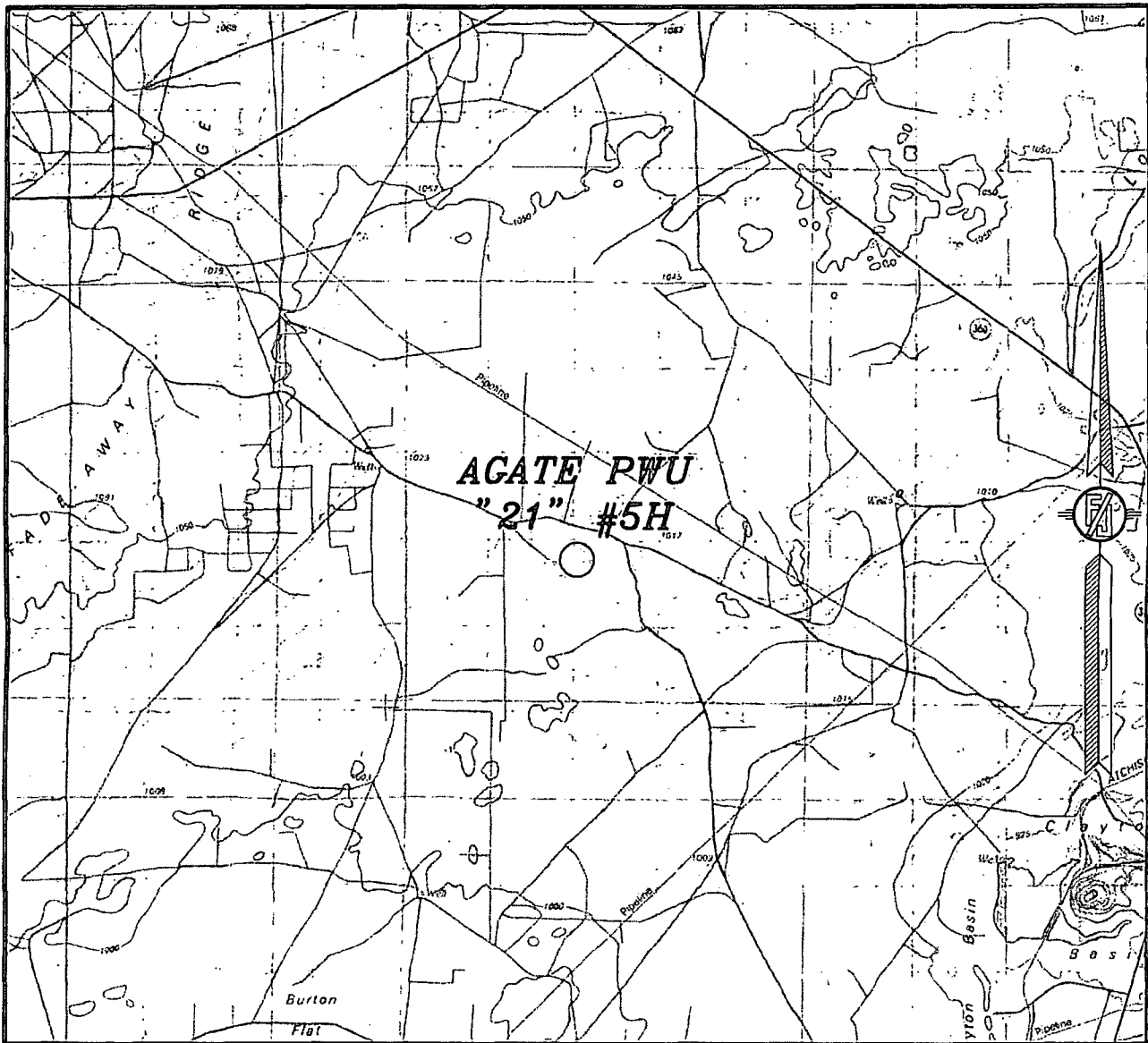
LOCATED 1250 FT. FROM THE NORTH LINE
 AND 330 FT. FROM THE WEST LINE OF
 SECTION 21, TOWNSHIP 19 SOUTH,
 RANGE 29 EAST, N.M.P.M.
 EDDY COUNTY, STATE OF NEW MEXICO

MAY 2, 2012

SURVEY NO. 974

MADRON SURVEYING, INC. 301 SOUTH CANAL CARLSBAD, NEW MEXICO
 (575) 234-3341

SECTION 21, TOWNSHIP 19 SOUTH, RANGE 29 EAST, N.M.P.M.
EDDY COUNTY, STATE OF NEW MEXICO
VICINITY MAP



NOT TO SCALE

DEVON ENERGY PRODUCTION COMPANY, L.P.

AGATE PWU "21" #5H

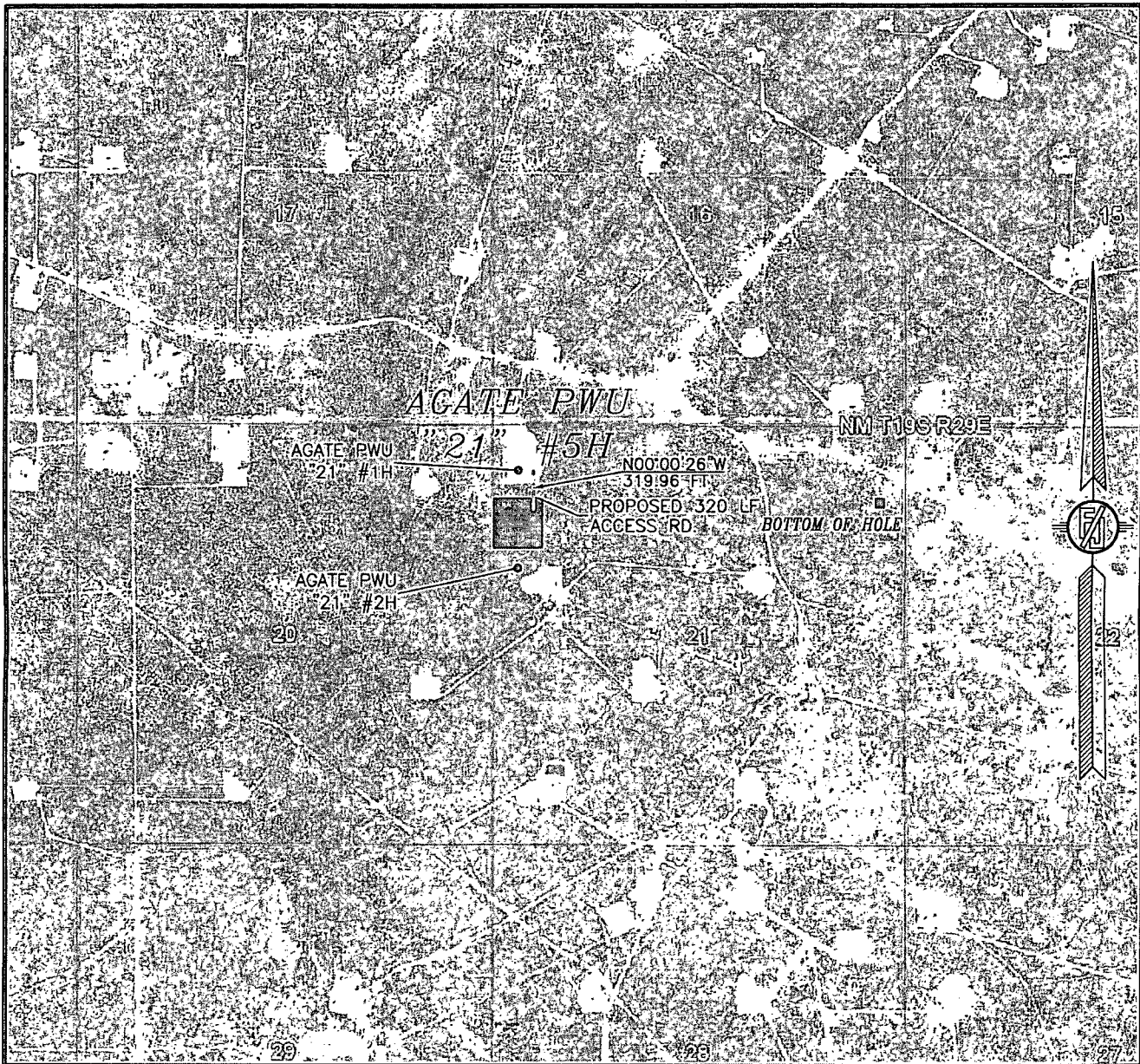
LOCATED 1250 FT. FROM THE NORTH LINE
AND 330 FT. FROM THE WEST LINE OF
SECTION 21, TOWNSHIP 19 SOUTH,
RANGE 29 EAST, N.M.P.M.
EDDY COUNTY, STATE OF NEW MEXICO

MAY 2, 2012

SURVEY NO. 974

MADRON SURVEYING, INC. 301 SOUTH CANAL CARLSBAD, NEW MEXICO
(575) 234-3341

SECTION 21, TOWNSHIP 19 SOUTH, RANGE 29 EAST, N.M.P.M.
EDDY COUNTY, STATE OF NEW MEXICO
AERIAL PHOTO



NOT TO SCALE
AERIAL PHOTO:
GOOGLE EARTH
JUNE, 2011

DEVON ENERGY PRODUCTION COMPANY, L.P.

AGATE PWU "21" #5H

LOCATED 1250 FT. FROM THE NORTH LINE
AND 330 FT. FROM THE WEST LINE OF
SECTION 21, TOWNSHIP 19 SOUTH,
RANGE 29 EAST, N.M.P.M.
EDDY COUNTY, STATE OF NEW MEXICO

MAY 2, 2012

SURVEY NO. 974

MADRON SURVEYING, INC. 301 SOUTH CANAL (575) 234-3341 CARLSBAD, NEW MEXICO