

District I
1625 N. French Dr., Hobbs, NM 88240
Phone: (575) 393-6161 Fax: (575) 393-0720
District II
811 S. First St., Artesia, NM 88210
Phone: (575) 748-1283 Fax: (575) 748-9720
District III
1000 Rio Brazos Road, Aztec, NM 87410
Phone: (505) 334-6178 Fax: (505) 334-6170
District IV
1220 S. St. Francis Dr., Santa Fe, NM 87505
Phone: (505) 476-3460 Fax: (505) 476-3462

State of New Mexico
Energy, Minerals & Natural Resources Department
OIL CONSERVATION DIVISION
1220 South St. Francis Dr.
Santa Fe, NM 87505

RECEIVED

SEP 16 2013

Form C-102

MOCD ARTESIA

Received August 1, 2011

Submit one copy to appropriate

District Office

☐ AMENDED REPORT

WELL LOCATION AND ACREAGE DEDICATION PLAT

¹ API Number 30-015-41651	² Pool Code 97869	³ Pool Name SWD; Devonian-Silurian
⁴ Property Code 40127	⁵ Property Name BLACK RIVER 16 SWD	⁶ Well Number 1
⁷ OGRID No. 6137	⁸ Operator Name DEVON ENERGY PRODUCTION COMPANY, L.P.	⁹ Elevation 3190.3

¹⁰ Surface Location

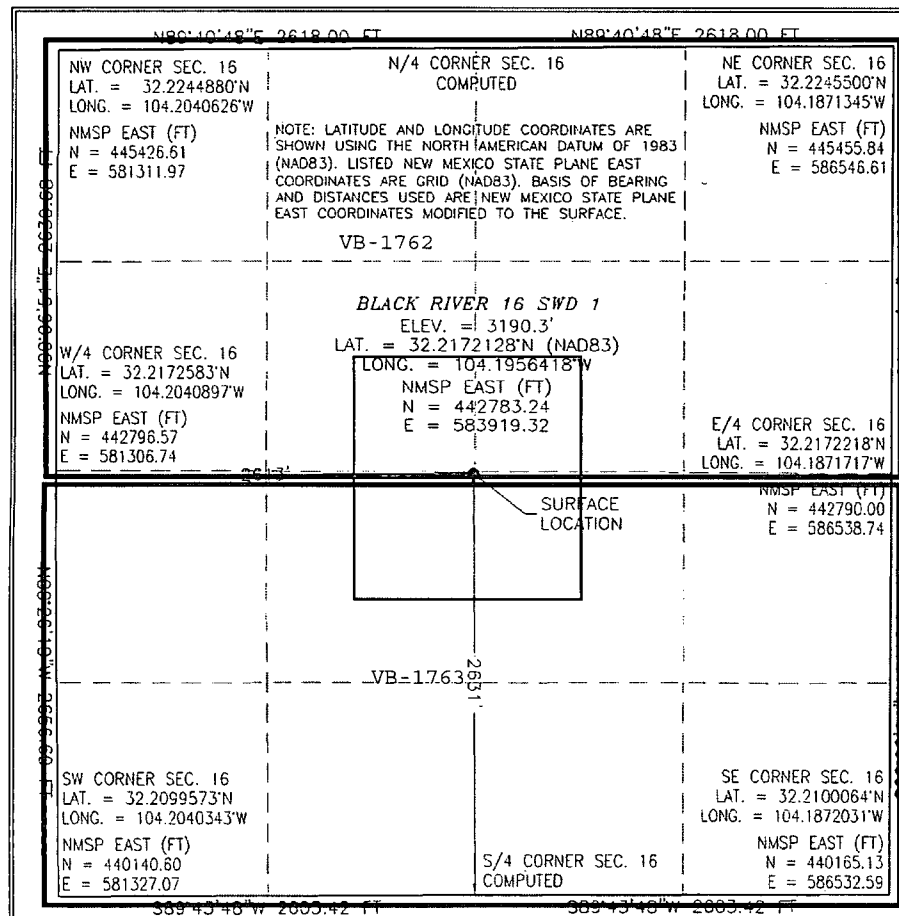
UL or lot no.	Section	Township	Range	Lot Idn	Feet from the	North/South line	Feet from the	East/West line	County
K	16	24 S	27 E		2631	SOUTH	2613	WEST	EDDY

¹¹ Bottom Hole Location If Different From Surface

UL or lot no.	Section	Township	Range	Lot Idn	Feet from the	North/South line	Feet from the	East/West line	County

¹² Dedicated Acres 40.00	¹³ Joint or Infill	¹⁴ Consolidation Code	¹⁵ Order No.
---	-------------------------------	----------------------------------	-------------------------

No allowable will be assigned to this completion until all interests have been consolidated or a non-standard unit has been approved by the division.



¹⁷ OPERATOR CERTIFICATION

I hereby certify that the information contained herein is true and complete to the best of my knowledge and belief, and that this organization either owns a working interest or unleased mineral interest in the land including the proposed bottom hole location or has a right to drill this well at this location pursuant to a contract with an owner of such a mineral or working interest, or to a voluntary pooling agreement or a compulsory pooling order heretofore entered by the division.

Signature: *[Signature]* Date: 9/12/2013

Printed Name: Ryan DeLong
Lease Line: ryan.delong@dv.com
E-mail Address:

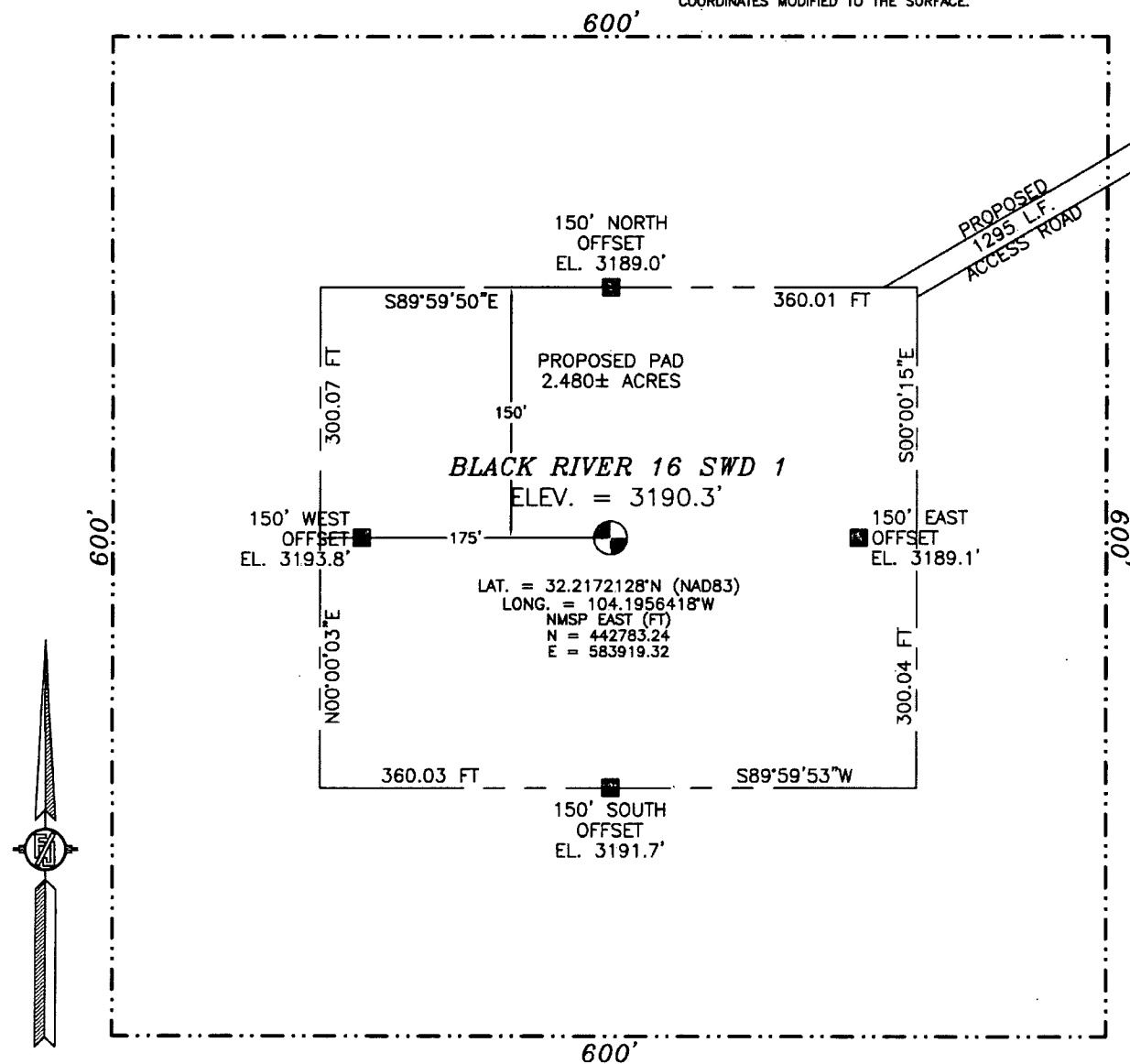
¹⁸ SURVEYOR CERTIFICATION

I hereby certify that the well location shown on this plat was plotted from field notes of actual surveys made by me or under my supervision, and that the same is true and correct to the best of my belief.

Date of Survey: JUNE 13, 2011
Signature and Seal of Professional Surveyor: *[Signature]*
Certificate Number: 12797
SURVEY NO. 1844

SECTION 16, TOWNSHIP 24 SOUTH, RANGE 27 EAST, N.M.P.M.
EDDY COUNTY, STATE OF NEW MEXICO
SITE MAP

NOTE: LATITUDE AND LONGITUDE COORDINATES ARE SHOWN USING THE NORTH AMERICAN DATUM OF 1983 (NAD83). LISTED NEW MEXICO STATE PLANE EAST COORDINATES ARE GRID (NAD83). BASIS OF BEARING AND DISTANCES USED ARE NEW MEXICO STATE PLANE EAST COORDINATES MODIFIED TO THE SURFACE.



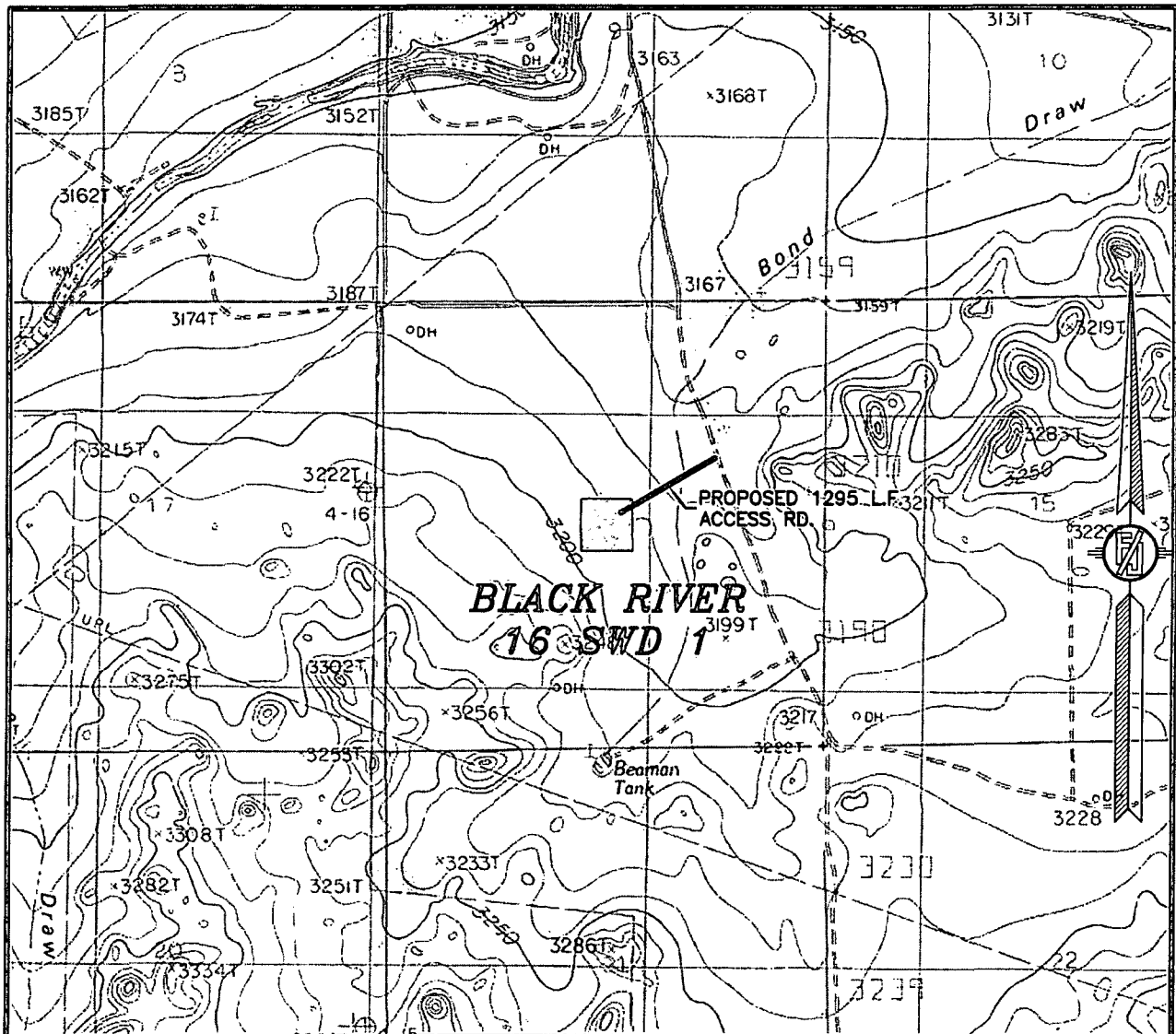
DEVON ENERGY PRODUCTION COMPANY, L.P.
BLACK RIVER 16 SWD 1
LOCATED 2631 FT. FROM THE SOUTH LINE
AND 2613 FT. FROM THE WEST LINE OF
SECTION 16, TOWNSHIP 24 SOUTH,
RANGE 27 EAST, N.M.P.M.
EDDY COUNTY, STATE OF NEW MEXICO

JUNE 13, 2013

SURVEY NO. 1844

MADRON SURVEYING, INC. 301 SOUTH CANAL (575) 234-3341 CARLSBAD, NEW MEXICO

SECTION 16, TOWNSHIP 24 SOUTH, RANGE 27 EAST, N.M.P.M.
EDDY COUNTY, STATE OF NEW MEXICO
LOCATION VERIFICATION MAP



USGS QUAD MAP:
BOND DRAW

NOT TO SCALE

DEVON ENERGY PRODUCTION COMPANY, L.P.
BLACK RIVER 16 SWD 1

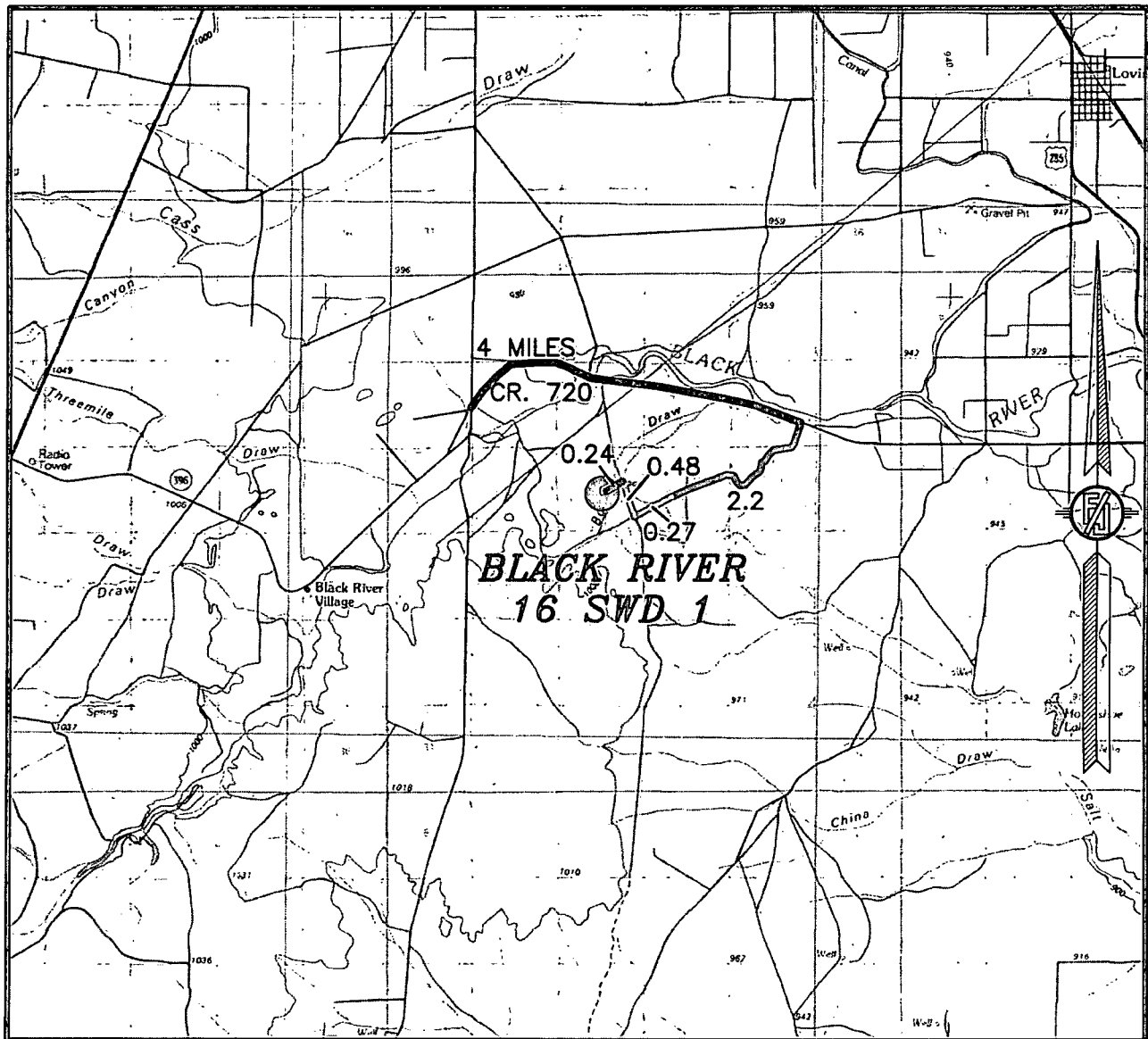
LOCATED 2631 FT. FROM THE SOUTH LINE
AND 2613 FT. FROM THE WEST LINE OF
SECTION 16, TOWNSHIP 24 SOUTH,
RANGE 27 EAST, N.M.P.M.
EDDY COUNTY, STATE OF NEW MEXICO

JUNE 13, 2013

SURVEY NO. 1844

MADRON SURVEYING, INC. 301 SOUTH CANAL (575) 234-3341 CARLSBAD, NEW MEXICO

SECTION 16, TOWNSHIP 24 SOUTH, RANGE 27 EAST, N.M.P.M.
EDDY COUNTY, STATE OF NEW MEXICO
VICINITY MAP



DISTANCES IN MILES

NOT TO SCALE

DIRECTIONS TO LOCATION

FROM THE INTERSECTION OF CR 742 (JOHN D. FOREHAND) & CR 720 (BLACK RIVER VILLAGE) GO EAST ON CR. 720 APPROX. 4 MILES GO SOUTH-SOUTHWEST ON MAIN CALICHE LEASE RD. FOR APPROX. 2.2 MILES TO RD. INTERSECTION CONTINUE SW ON CALICHE RD. 0.27 MILES TO 2-TRACK ROAD X-ING RUNNING N-S, TURN RIGHT ON 2-TRACK RD. 0.48 MILES TO PROPOSED ROAD ON LEFT FOLLOW STAKED RD. 1295 FT TO SITE

DEVON ENERGY PRODUCTION COMPANY, L.P.
BLACK RIVER 16 SWD 1

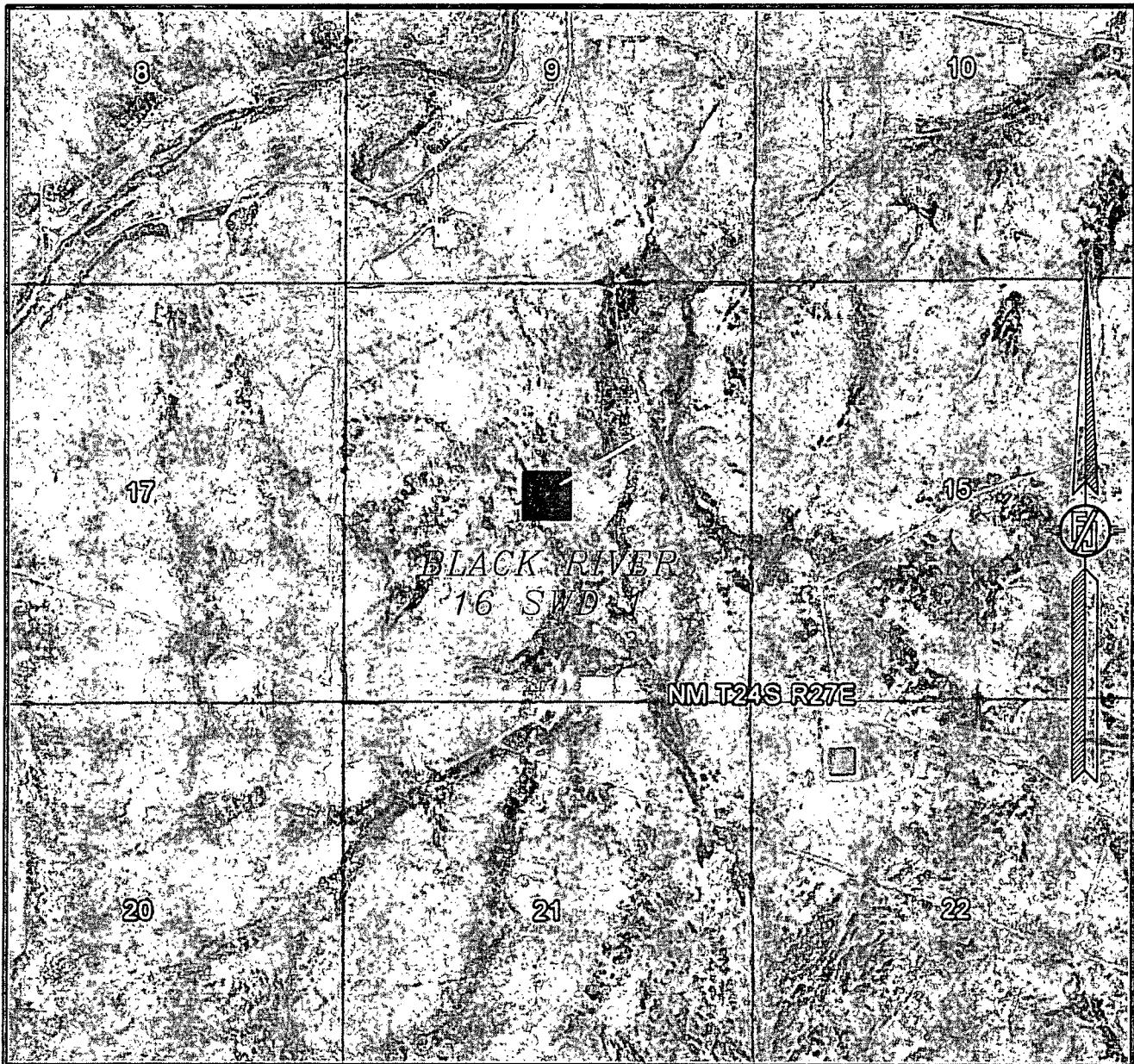
LOCATED 2631 FT. FROM THE SOUTH LINE
AND 2613 FT. FROM THE WEST LINE OF
SECTION 16, TOWNSHIP 24 SOUTH,
RANGE 27 EAST, N.M.P.M.
EDDY COUNTY, STATE OF NEW MEXICO

JUNE 13, 2013

SURVEY NO. 1844

MADRON SURVEYING, INC. 301 SOUTH CANAL (575) 234-3341 CARLSBAD, NEW MEXICO

SECTION 16, TOWNSHIP 24 SOUTH, RANGE 27 EAST, N.M.P.M.
EDDY COUNTY, STATE OF NEW MEXICO
AERIAL PHOTO



NOT TO SCALE
AERIAL PHOTO:
GOOGLE EARTH
APRIL 2013

DEVON ENERGY PRODUCTION COMPANY, L.P.
BLACK RIVER 16 SWD 1

LOCATED 2631 FT. FROM THE SOUTH LINE
AND 2613 FT. FROM THE WEST LINE OF
SECTION 16, TOWNSHIP 24 SOUTH,
RANGE 27 EAST, N.M.P.M.
EDDY COUNTY, STATE OF NEW MEXICO

JUNE 13, 2013

SURVEY NO. 1844

MADRON SURVEYING, INC. 301 SOUTH CANAL (575) 234-3341 CARLSBAD, NEW MEXICO