

DISTRICT I
1625 N. French Dr., Hobbs, NM 88240
Phone: (575) 393-6161 Fax: (575) 393-0720

DISTRICT II
811 S. First St., Artesia, NM 88210
Phone: (575) 748-1283 Fax: (575) 748-9720

DISTRICT III
1000 Rio Brazos Road, Aztec, NM 87410
Phone: (505) 334-6178 Fax: (505) 334-6170

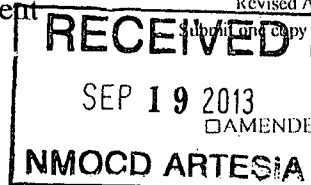
DISTRICT IV
1220 S. St. Francis Dr., Santa Fe, NM 87505
Phone: (505) 476-3460 Fax: (505) 476-3462

State of New Mexico
Energy, Minerals & Natural Resources Department
OIL CONSERVATION DIVISION
1220 South St. Francis Dr.
Santa Fe, New Mexico 87505

Form C-102

Revised August 1, 2011

Submit one copy to appropriate District Office



WELL LOCATION AND ACREAGE DEDICATION PLAT

API Number 30-015-41685	Pool Code 96610	Pool Name Empire; Glorieta-Yaso, East
Property Code 309604	Property Name TIGGER 9 STATE	Well Number 11
OGRID No. 192463	Operator Name OXY U.S.A. WTP LP	Elevation 3584'

Surface Location

UL or lot No.	Section	Township	Range	Lot Idn	Feet from the	North/South line	Feet from the	East/West line	County
K	9	17-S	29-E		1921	SOUTH	1505	WEST	EDDY

Bottom Hole Location If Different From Surface

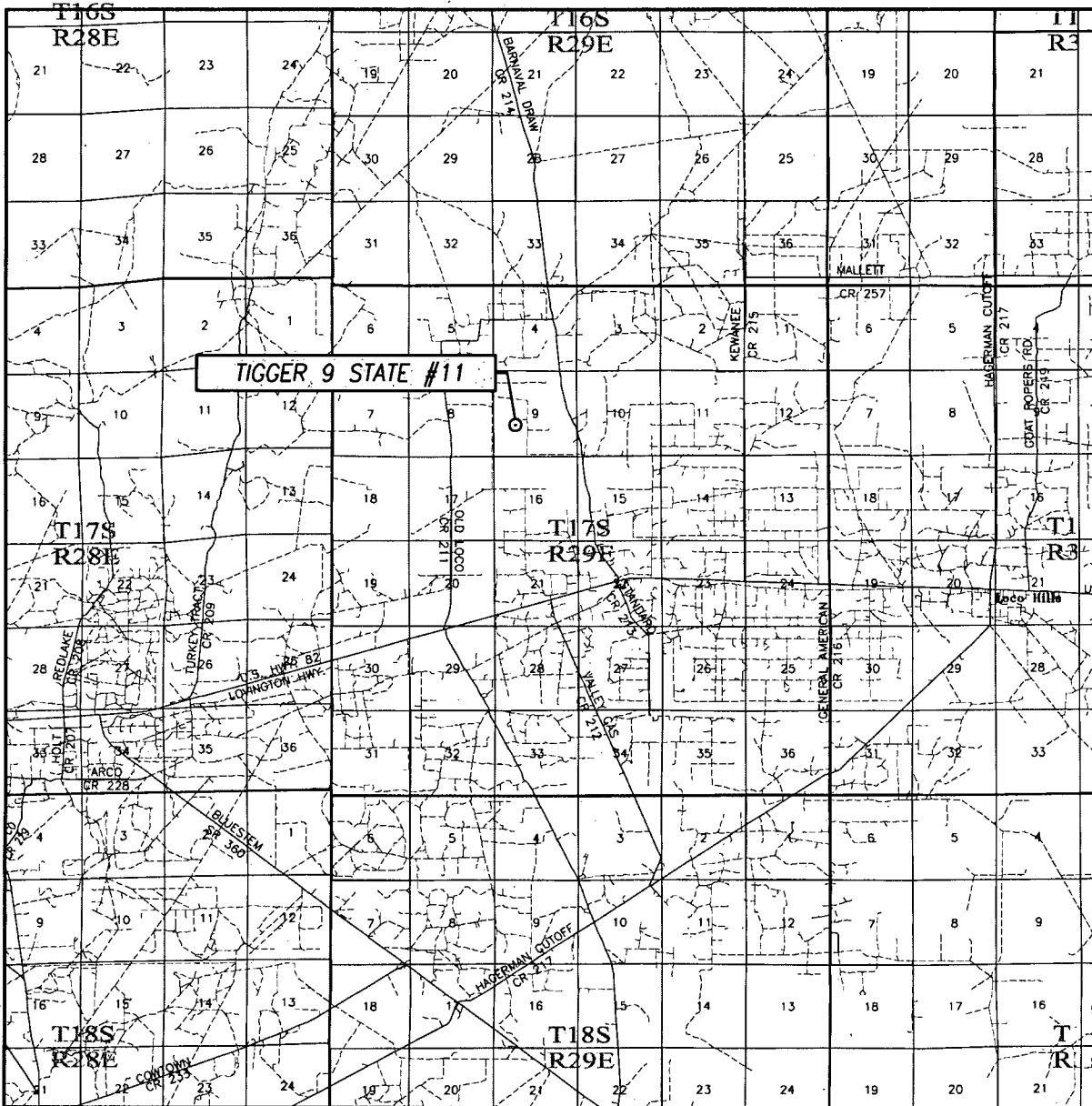
UL or lot No.	Section	Township	Range	Lot Idn	Feet from the	North/South line	Feet from the	East/West line	County
K	9	17-S	29-E		1940	SOUTH	1730	WEST	EDDY

Dedicated Acres 40	Joint or Infill	Consolidation Code	Order No.
------------------------------	-----------------	--------------------	-----------

NO ALLOWABLE WILL BE ASSIGNED TO THIS COMPLETION UNTIL ALL INTERESTS HAVE BEEN CONSOLIDATED OR A NON-STANDARD UNIT HAS BEEN APPROVED BY THE DIVISION

<p>GEODETIC COORDINATES NAD 27 NME</p> <p>SURFACE LOCATION Y=671939.0 N X=576890.6 E</p> <p>LAT.=32.846995° N LONG.=104.082966° W</p> <p>BOTTOM HOLE LOCATION Y=671959.3 N X=577115.6 E</p>	<p>CORNER COORDINATES TABLE</p> <p>A - Y=672657.8 N, X=576696.1 E B - Y=672665.7 N, X=578006.4 E C - Y=671345.3 N, X=578010.0 E D - Y=671337.7 N, X=576698.1 E</p>	<p>OPERATOR CERTIFICATION</p> <p>I hereby certify that the information herein is true and complete to the best of my knowledge and belief, and that this organization either owns a working interest or unleased mineral interest in the land including the proposed bottom hole location or has a right to drill this well at this location pursuant to a contract with an owner of such mineral or working interest, or to a voluntary pooling agreement or a compulsory pooling order heretofore entered by the division.</p> <p>Signature: <i>Jennifer Duarte</i> Date: 9/18/13 Printed Name: Jennifer Duarte E-mail Address: jennifer.duarte@oxy.com</p>
		<p>SURVEYOR CERTIFICATION</p> <p>I hereby certify that the well location shown on this plat was plotted from field notes of actual surveys made by me or under my supervision, and that the same is true and correct to the best of my belief.</p> <p>APRIL 10, 2013</p> <p>Date of Survey Signature & Seal of Professional Surveyor: <i>Gary G. Eidson</i> GARY G. EIDSON NEW MEXICO 12641 RECEIVED PROFESSIONAL SURVEYOR Certificate Number: Gary G. Eidson 12641 Ronald J. Eidson 3239 BKL. WSC W.O.: 13.11.0369</p>

VICINITY MAP



SCALE: 1" = 2 MILES

SEC. 9 TWP. 17-S RGE. 29-E

SURVEY N.M.P.M.

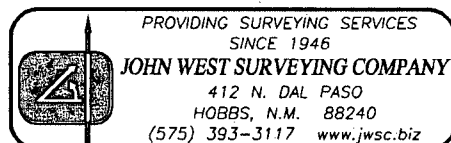
COUNTY EDDY STATE NEW MEXICO

DESCRIPTION 1921' FSL & 1505' FWL

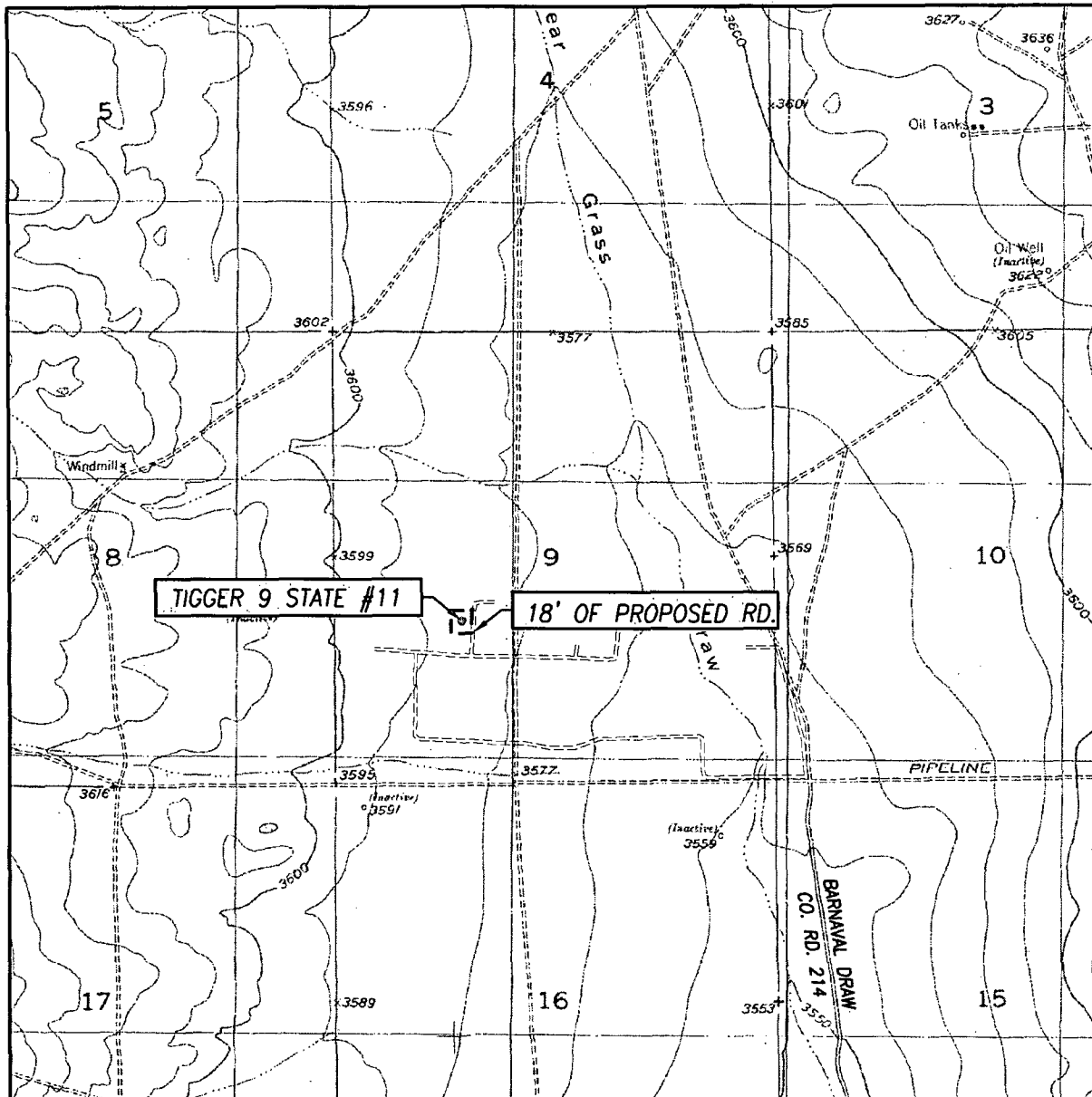
ELEVATION 3584'

OPERATOR OXY U.S.A. WTP LP

LEASE TIGGER 9 STATE



LOCATION VERIFICATION MAP



SCALE: 1" = 2000'

CONTOUR INTERVAL:
RED LAKE SE, N.M. - 10'

SEC. 9 TWP. 17-S RGE. 29-E

SURVEY N.M.P.M.

COUNTY EDDY STATE NEW MEXICO

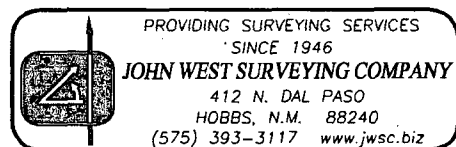
DESCRIPTION 1921' FSL & 1505' FWL

ELEVATION 3584'

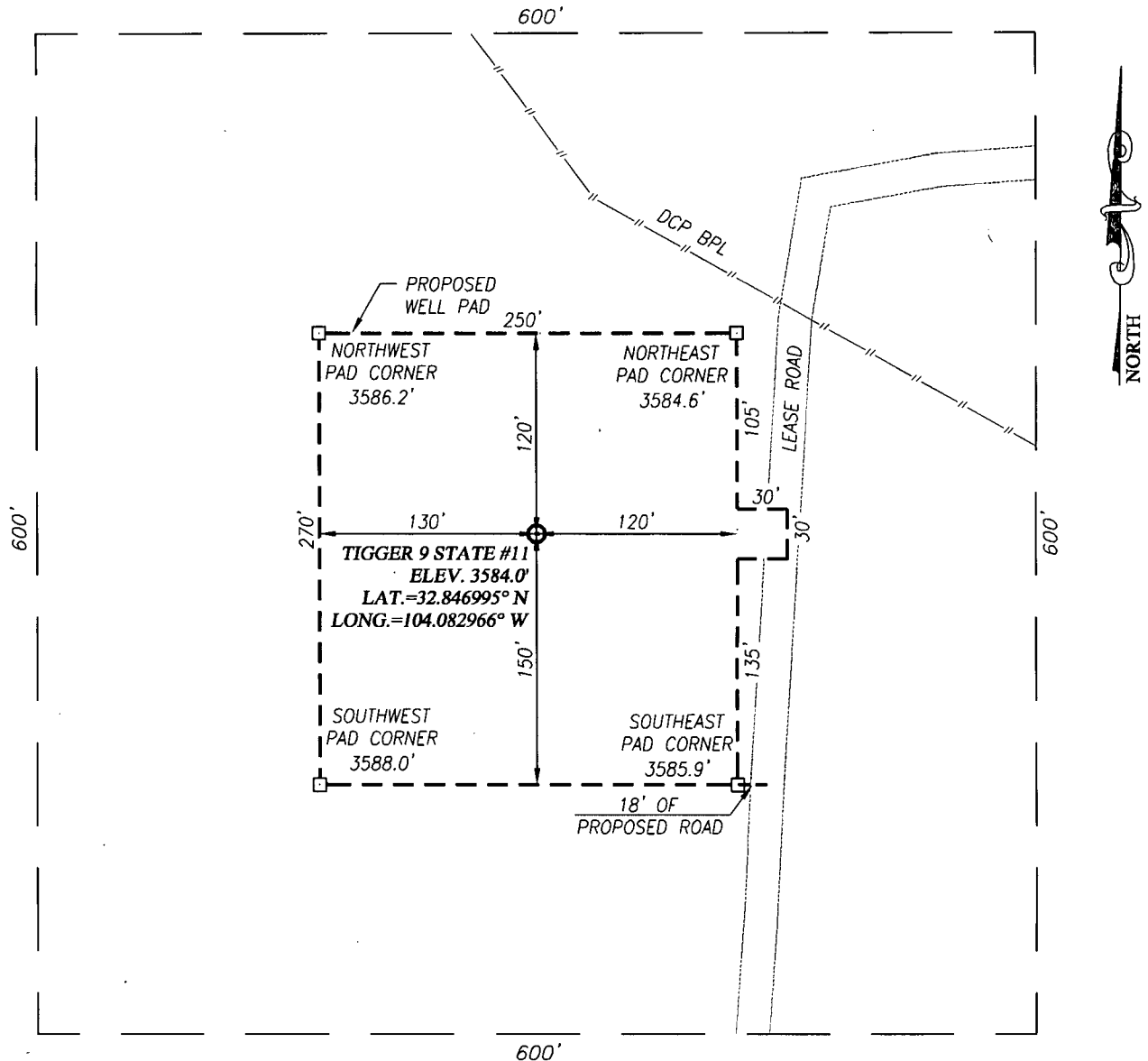
OPERATOR OXY U.S.A. WTRLP

LEASE TIGGER 9 STATE

U.S.G.S. TOPOGRAPHIC MAP
RED LAKE SE, N.M.

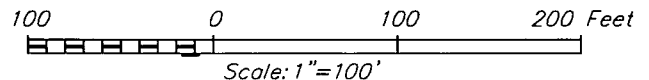


SECTION 9, TOWNSHIP 17 SOUTH, RANGE 29 EAST, N.M.P.M.
EDDY COUNTY **NEW MEXICO**



DIRECTIONS TO TIGGER 9 STATE #11:

FROM THE INTERSECTION OF U.S. HIGHWAY 82 & CO. RD. 214 (BARNAVAL DRAW RD.) GO NORTH ON CO. RD. 214 APPROX. 1.5 MILES. TURN LEFT AND GO WEST APPROX. 0.2 MILES; TURN RIGHT AND GO NORTH APPROX. 0.1 MILE; TURN LEFT AND GO WEST APPROX. 0.6 MILES; TURN RIGHT AND GO NORTH APPROX. 0.2 MILES; TURN RIGHT AND GO EAST APPROX. 0.1 MILES; TURN LEFT AND GO NORTH APPROX. 0.1 MILES; THIS LOCATION IS WEST APPROX. 150 FEET.



OXY U.S.A. WTP LP

TIGGER 9 STATE #11 WELL
LOCATED 1921 FEET FROM THE SOUTH LINE
AND 1505 FEET FROM THE WEST LINE OF SECTION 9,
TOWNSHIP 17 SOUTH, RANGE 29 EAST, N.M.P.M.,
EDDY COUNTY, NEW MEXICO

PROVIDING SURVEYING SERVICES
 SINCE 1946
JOHN WEST SURVEYING COMPANY
 412 N. DAL PASO
 HOBBS, N.M. 88240
 (575) 393-3117 www.jwsc.biz

Survey Date: 4/10/13	CAD Date: 4/22/13	Drawn By: BKL
W.O. No.: 13110369	Rev. :	Rel. W.O.: Sheet 1 of 1

OXY USA WTPLP
APD Data

OPERATOR NAME / NUMBER: OXY USA WTPLP

192463

LEASE NAME / NUMBER: Tigger 9 State # 11

Federal Lease No:

STATE: NM

COUNTY: Eddy

SURFACE LOCATION: 1921' FSL & 1505' FWL, Sec 9, T17S, R29E

APPROX GR ELEV: 3584'

EST KB ELEV: 3598' (14' KB-GL)

1. GEOLOGIC NAME OF SURFACE FORMATION

a. Permian

2. ESTIMATED TOPS OF GEOLOGICAL MARKERS & DEPTHS OF ANTICIPATED FRESH WATER, OIL OR GAS

Formation Name	TVD	Expected Fluids
Rustler	310	Fresh Water
Salado (Salt)	340	-
Yates	882	-
Queen	1736	-
Grayburg	2165	Oil
San Andres	2438	Oil/Water
Glorietta	3887	Oil
Paddock	3951	Oil
Blinbry	4351	Oil
Tubbs	5300	Oil
TD	5500	TD

- A. Fresh Water formation is outcropping and will be covered with the 16" conductor pipe, which will be set at 120' prior to spud.

GREATEST PROJECTED TD: 5500' MD / 5500' TVD

OBJECTIVE: Yeso

3. CASING PROGRAM

Surface Casing set at $\pm 400'$ MD/ 400' TVD in a 11" hole filled with 8.8 ppg mud

Interval (MD)	OD (in)	Wt (ppf)	Grade	Conn	ID (in)	Condition	Jt Str (M-lbs)	Burst (psi)	Collapse (psi)	Burst SF	Coll SF	Ten SF
0' - 400'	8.625	24	J55	STC	8.097	New	244	2950	1370	1.42	10.42	2.26

Production Casing set at $\pm 5500'$ MD / 5500' TVD in a 7.875" hole filled 9.6 ppg mud

Interval (MD)	OD (in)	Wt (ppf)	Grade	Conn	ID (in)	Condition	Jt Str (M-lbs)	Burst (psi)	Collapse (psi)	Burst SF	Coll SF	Ten SF
0' - 5,500'	5.5	17	L80	BTC	4.892	New	428	7740	6290	1.28	2.20	2.22

Casing Design Assumptions:

Burst Loads

CSG Test (Surface)

- Internal: Displacement fluid + 70% CSG Burst rating
- External: Pore Pressure from section TD to surface

CSG Test (Production)

- Internal: Displacement fluid + 80% CSG Burst rating
- External: Pore Pressure from the well TD the Surface CSG shoe and MW of the drilling mud that was in the hole when the CSG was run to surface

Gas Kick (Surface)

- Internal: Gas Kick based on Pore Pressure or Fracture Gradient @ CSG shoe with a gas 0.115psi/ft Gas gradient to surface while drilling the next hole section
- External: Pore Pressure from section TD to previous CSG shoe and MW of the drilling mud that was in the hole when the CSG was run to surface

Stimulation (Production)

- Internal: Displacement fluid + Max Frac treating pressure (not to exceed 80% CSG Burst rating)
- External: Pore Pressure from the well TD to the surface CSG shoe and 8.5 ppg MWE to surface

Collapse Loads

Lost Circulation (Surface)

- Internal: Losses experienced while drilling the next hole section (e.g. losses while drilling the production hole section are used as a collapse load to design the surface CSG). After losses there will be a column of mud inside the CSG with an equivalent weight to the Pore Pressure of the lost circulation zone
- External: MW of the drilling mud that was in the hole when the CSG was run

Cementing (Surface/Production)

- Internal: Displacement Fluid
- External: Cement Slurries to TOC, MW to surface

Full Evacuation (Production)

- Internal: Atmospheric Pressure
- External: MW of the drilling mud that was in the hole when the CSG was run

Tension Loads

Running CSG (Surface/Production)

- Axial load of the buoyant weight of the string plus either 100 klb over-pull or string weight in air, whichever is less

Green Cement (Surface/Production)

- Axial load of the buoyant weight of the string plus the cement plug bump pressure (Final displacement pressure + 500 psi)

Burst, Collapse and Tensile SF are calculated using Landmark's Stress Check (Casing Design) software.

4. CEMENT PROGRAM:

Surface Interval

Interval	Amount sx	Ft of Fill	Type	Gal/Sk	PPG	Ft ³ /sk	24 Hr Comp
Surface (TOC: 0' – 400')							
Lead: 0' – 400' (125% Excess)	190	400	Premium Plus Cement: 1% Calcium Chloride – Flake	6.36	14.8	1.34	1608 psi

Production Interval

Interval	Amount sx	Ft of Fill	Type	Gal/Sk	PPG	Ft ³ /sk	24 Hr Comp
Production (TOC: 0' – 5500')							
Lead: 0' – 3000' (100 % Excess)	400	3000	Interfill C: 0.25 lbm/sk D-AIR 5000	13.88	11.9	2.43	281 psi
Tail: 3000' - 5500' (100 % Excess)	560	2500	Premium Plus Cement: 0.5% Halad ®-344, 0.2% WellLife 734, 5 lbm/sk Microbond, 0.3% Econolite, 0.3% CFR-3	7.72	14.2	1.55	1413 psi

Description of Cement Additives: Calcium Chloride – Flake (Accelerator), D-AIR 5000 (Defoamer), Halad ®-344 (Low Fluid Loss Control), WellLife 734 (Cement Enhancer), Microbond (Expander), Econolite (Light Weight Additive), CFR-3 (Dispersant)

The volumes indicated above may be revised depending on if a caliper measurement.

5. DIRECTIONAL PLAN

Vertical well: No directional plan

6. PRESSURE CONTROL EQUIPMENT

Surface: 0' – 400' None.

Production: 400' MD/TVD – 5500' MD / 5500' TVD The minimum working pressure of the blowout preventer (BOP) and related equipment (BOPE) required to drill below the surface casing shoe shall be 3000 (3M) psi. Operator will be using an 11" 3M two ram stack with 3M annular preventer, & 3M Choke Manifold.

- a. The 11" 3000 psi blowout prevention equipment will be installed and operational after setting the 8 5/8" surface casing and the 8 5/8" SOW x 11" 3K conventional wellhead; the rotating head body will be installed but the rubber will be installed when it becomes operationally necessary.
- b. The BOP and ancillary BOPE will be tested by a third party after setting surface casing. All equipment will be tested to 250/3000 psi for 5 minutes and charted, except the annular, which will be tested to 70% of working pressure.
- c. The BOPE test will be repeated within 21 days of the original test, on the first trip
- d. Other accessory BOP equipment will include a floor safety valve, choke lines, and choke manifold having a 3000 psi working pressure rating and tested to 3000 psi.
- e. The Operator also requests a variance to connect the BOP choke outlet to the choke manifold using a 3" co-flex hose with a working pressure of 3000 psi.
- f. BOP & Choke manifold diagrams attached.

7. MUD PROGRAM:

Depth	Mud Wt ppg	Vis Sec	Fluid Loss	Type System
0' – 400'	8.4 – 8.8	27 – 28	NC	Fresh Water / Spud Mud
400' – TD	9.2 – 9.6	28 – 29	NC	Brine Water / Salt Gel / Sweeps

Remarks: Pump high viscosity sweeps as needed for hole cleaning. The mud system will be monitored visually/manually as well as with an electronic PVT. The necessary mud products for additional weight and fluid loss control will be on location at all times. Appropriately weighted mud will be used to isolate potential gas, oil, and water zones until such time as casing can be cemented into place for zonal isolation.

8. AUXILIARY WELL CONTROL AND MONITORING EQUIPMENT

A full opening drill pipe stabbing valve having the appropriate connections will be on the rig floor unobstructed and readily accessible at all times.

9. POTENTIAL HAZARDS:

- Hydrogen Sulfide detection equipment will be in operation after drilling out the surface casing shoe until the production casing has been cemented. Breathing equipment will be on location from drilling out the surface shoe until production casing is cemented. If H₂S is encountered the operator will comply with Onshore Order #6.
- No abnormal temperatures or pressures are anticipated. The highest anticipated pressure gradient is **0.5 psi/ft**. Maximum anticipated bottom hole pressure is **2750 psi**.
- All personnel will be familiar with all aspects of safe operation of equipment being used to drill this well. Adequate flare lines will be installed off the mud/gas separator where gas may be flared safely.

10. ANTICIPATED STARTING DATE AND DURATION OF OPERATIONS

Road and location construction will begin after the **NMOCD** has approved the APD. Anticipated spud date will be as soon as possible after approval and as soon as a rig will be available. Move in operations and drilling is expected to take 15 days. If production casing is run, then an additional 30 days will be needed to complete the well and construct surface facilities and/or lay flow lines in order to place well on production.

11. WIRELINE LOGGING / MUD LOGGING / LWD

- NO open hole wireline logging
- Mud logging: None

COMPANY PERSONNEL:

<u>Name</u>	<u>Title</u>	<u>Office Phone</u>	<u>Mobile Phone</u>
Kacie Cruz	Drilling Engineer	(713)350-4889	(281) 433-6594
Sebastian Millan	Drilling Engineer Supervisor	(713)350-4950	(832) 528-3268
Roger Allen	Drilling Superintendent	(713)215-7617	(281) 682-3919
Oscar Quintero	Drilling Manager	(713)985-6343	(713) 689-4946