

DISTRICT I
4625 N. French Dr., Hobbs, NM 88240
Phone: (575) 393-6161 Fax: (575) 393-0720

DISTRICT II
811 S. First St., Artesia, NM 88210
Phone: (575) 748-1283 Fax: (575) 748-9720

DISTRICT III
1000 Rio Brazos Road, Aztec, NM 87410
Phone: (505) 334-6178 Fax: (505) 334-6170

DISTRICT IV
1220 S. St. Francis Dr., Santa Fe, NM 87505
Phone: (505) 476-3460 Fax: (505) 476-3462

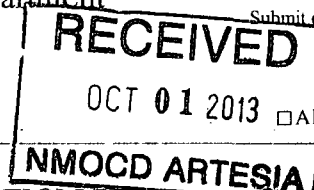
State of New Mexico
Energy, Minerals & Natural Resources Department

OIL CONSERVATION DIVISION
1220 South St. Francis Dr.
Santa Fe, New Mexico 87505

Form C-102

Revised August 1, 2011

Submit one copy to appropriate
District Office



OCT 01 2013 ☐ AMENDED REPORT

WELL LOCATION AND ACREAGE DEDICATION PLAT

As Drilled

API Number 30-015-40703	Pool Code 97918	Pool Name Burch Keely; Glorieta Upper Yeso
Property Code 308086	Property Name BURCH KEELY UNIT	Well Number 610
OGRID No. 229137	Operator Name COG OPERATING, LLC	Elevation 3586'

Surface Location

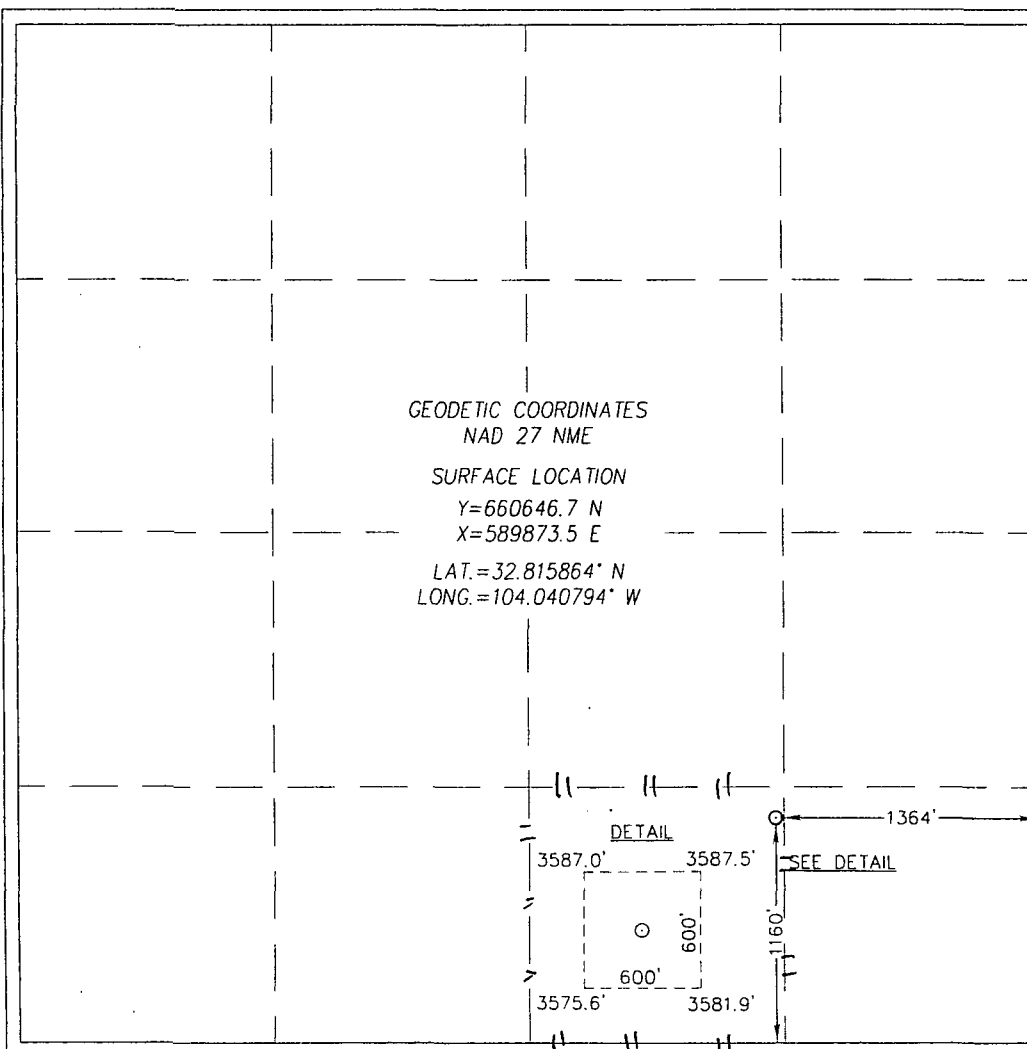
UL or lot No. O	Section 23	Township 17-S	Range 29-E	Lot Idn	Feet from the 1160	North/South line SOUTH	Feet from the 1364	East/West line EAST	County EDDY
---------------------------	----------------------	-------------------------	----------------------	---------	------------------------------	----------------------------------	------------------------------	-------------------------------	-----------------------

Bottom Hole Location If Different From Surface

UL or lot No.	Section	Township	Range	Lot Idn	Feet from the	North/South line	Feet from the	East/West line	County
---------------	---------	----------	-------	---------	---------------	------------------	---------------	----------------	--------

Dedicated Acres 40	Joint or Infill	Consolidation Code	Order No.
------------------------------	-----------------	--------------------	-----------

NO ALLOWABLE WILL BE ASSIGNED TO THIS COMPLETION UNTIL ALL INTERESTS HAVE BEEN CONSOLIDATED OR A NON-STANDARD UNIT HAS BEEN APPROVED BY THE DIVISION



OPERATOR CERTIFICATION

I hereby certify that the information herein is true and complete to the best of my knowledge and belief, and that this organization either owns a working interest or unleased mineral interest in the land including the proposed bottom hole location or has a right to drill this well at this location pursuant to a contract with an owner of such mineral or working interest, or to a voluntary pooling agreement or a compulsory pooling order heretofore entered by the division.

[Signature] 9-30-13
Signature Date

Kelly J. Holly
Printed Name

kholly@concho.com
E-mail Address

SURVEYOR CERTIFICATION

I hereby certify that the well location shown on this plat was plotted from field notes of actual surveys made by me or under my supervision, and that the same is true and correct to the best of my belief.

JUNE 27, 2012

Date of Survey
Signature & Seal of Professional Surveyor:

[Signature]
RONALD J. EIDSON
NEW MEXICO
3239
07/09/2012
Certificate Number Gary C. Eidson 12641
Ronald J. Eidson 3239
AF JWSC W.O.: 12.11.0047